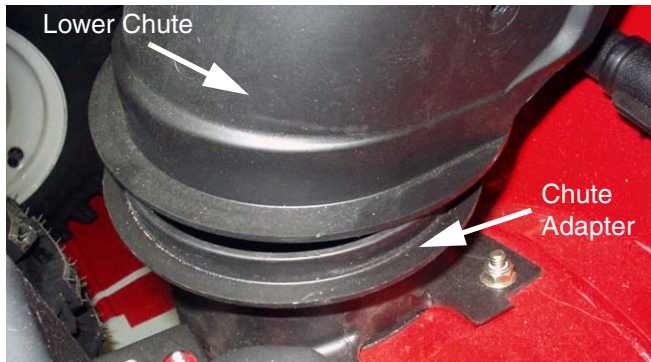


**Models Affected:** 2008 Model Year 500 and 600 Series  
**Serial Number Range Affected:** Snow Throwers Produced Prior to September 2, 2008 (Date Code "...I028...")  
**Date:** 12/22/2008  
**Subject:** Extended Length Lower Chute, 731-06440, Dislodging from the Chute Adapter.

**ACTION REQUIRED:** This repair is to be considered a **Fix-As-Fail** repair

**SYMPTOM(S):** Under heavy snow throwing conditions where the snow may contain frozen chunks the lower chute may become dislodged from the chute adapter. See Figure 1.

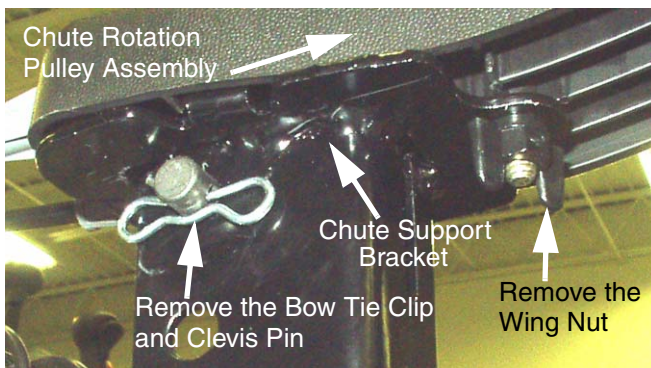
**CORRECTIVE ACTION:**



**FIGURE 1**

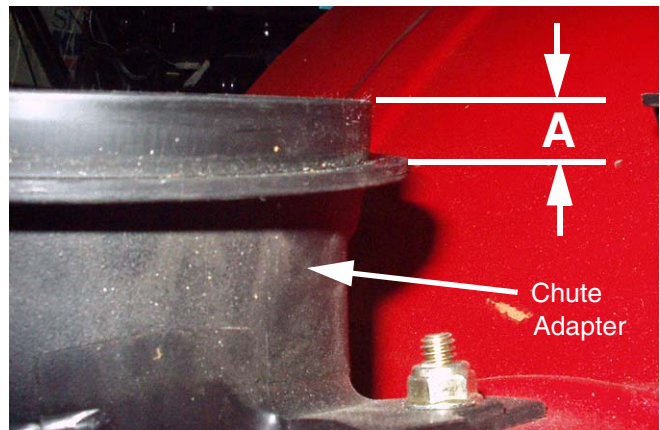
1. Remove the clevis pin and wing nut securing the chute rotation pulley assembly and lower/upper chute to the chute support bracket. See Figure 2.

2. Lift up and remove the chute rotation pulley assembly with the lower/upper chutes and cables as one assembly from the chute support bracket.



**FIGURE 2**

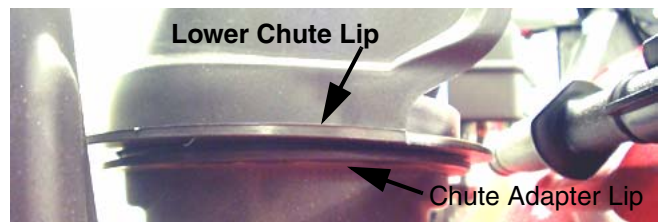
3. Refer to Figure 3. Measure the height "A" of the chute adapter lip. If "A" is approximately 1/2" (.50) or less, order and install a new chute adapter, **731-04705C**. The chute adapter should have a nominal lip height "A" of 5/8" (.625).



**FIGURE 3**

4. Replace the chute rotation pulley assembly and lower/upper chute to the chute support bracket.

5. Check that the chute support bracket is not bent back toward the engine by observing that the lip on the lower chute is parallel to a little raised in the rear to the lip on the chute adapter. See Figure 4. Straighten bracket if required.



**FIGURE 4**

**Warranty:** Normal warranty terms apply. Indicate Service Advisory **MTD- 095** and **P/N 731-04705** as the original failed part on the claim. Repair time allowance is **18 Minutes (0.3 Hrs)**. List model and serial number of the unit on claim.

SERVICE MANAGER	PARTS MANAGER	SALES MANAGER	SERVICE TECH.	SERVICE TECH.

Circulate and Initial