



Service Kit 753-05962

Date: 7/24/2008

Subject: Service Replacement for the 682-3001A LH and/or 682-3000A RH Handle Bracket Assemblies (Includes Height Adjusters)

Models Affected: N/A

Read through and understand these instructions completely before proceeding with repair.

PURPOSE: This kit provides the service replacement 687-02107A LH (Left Hand) and 687-02106A RH (Right Hand) Handle Bracket / Height Adjuster Assemblies that replaces the 682-3000A and 682-3001A which are no longer available. Because the lower handle attachment pin on the new handle brackets has been relocated with respect to the 682-3000A and -3001A, both assemblies should be replaced even if only one requires replacement.

NOTE: These materials are prepared for use by trained technicians who are experienced in the service and repair of equipment of the kind described in this publication, and are not intended for use by untrained or inexperienced individuals. Such individuals should seek the assistance of an authorized service technician or dealer.

NOTE: Save this Instruction Sheet. Refer to it when ordering replacement parts.

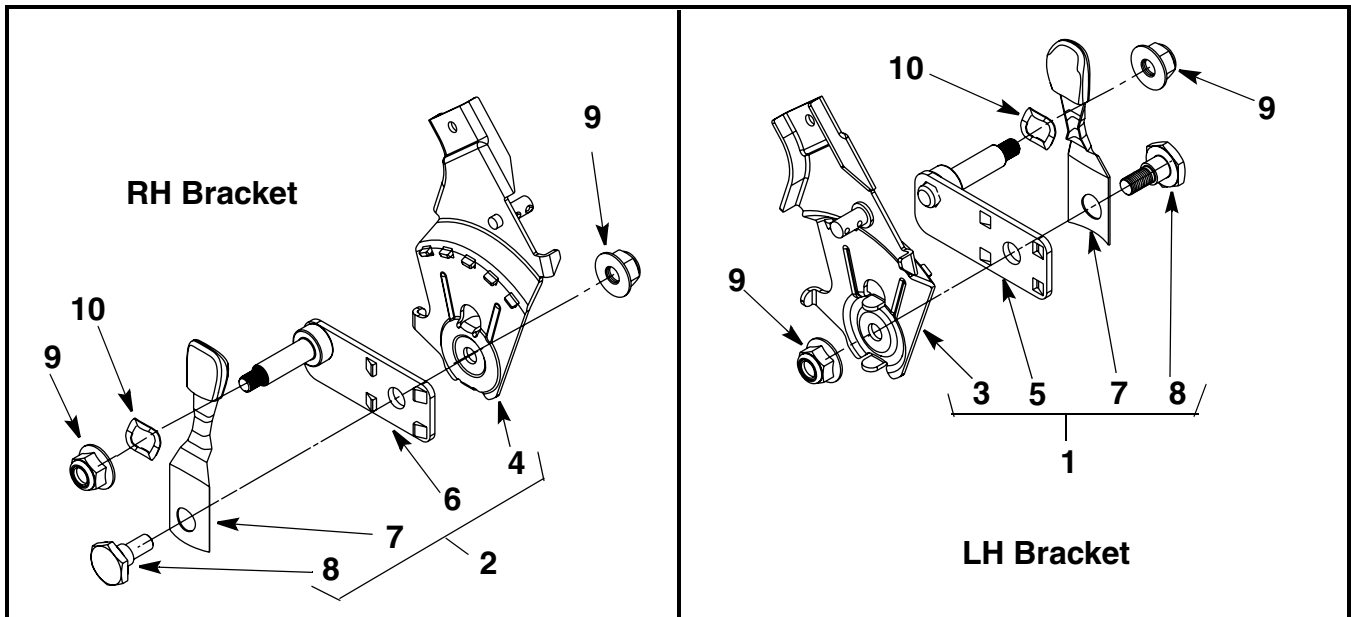


FIGURE 1

Service Kit Contents (See Figure 1)

* - Not Available Separately

ITEM NO.	PART NUMBER	QTY	DESCRIPTION
1	687-02107A	1	BRACKET ASSEMBLY: HEIGHT ADJUSTER AND HANDLE: LH (Includes 3,5,7 and 8)
2	687-02106A	1	BRACKET ASSEMBLY: HEIGHT ADJUSTER AND HANDLE: RH (Includes 4,6,7 and 8)
3	687-02179	1	BRACKET ASSEMBLY: HANDLE: LH
4	687-02180	1	BRACKET ASSEMBLY: HANDLE: RH
5	687-02337	1	ARM ASSEMBLY: PIVOT: LH
6	687-02338	1	ARM ASSEMBLY: PIVOT: RH
7	94832	2	SPRING LEVER AND KNOB ASSEMBLY
8	738-04266	2	SCREW: SHOULDER: .500 DIA x .385
9	712-04065	4	NUT: FLANGELOCK: 3/8"-16: GRF: NYLON
10	736-0504	2	WASHER: WAVE: .510 x .750 x .017
	*	1	THIS INSTRUCTION SHEET

Pre-Service Preparation:

1. Place mower on a flat and level surface, turn off engine and allow muffler and engine to cool before proceeding.
2. Remove spark plug wire from the spark plug and ground to the engine block.
3. Remove the fuel cap. Place a piece of thin plastic sheet over the fuel tank opening and replace the cap tightly.
4. If so equipped, remove the wing nut and eye hook from the right side of the upper handle retaining the recoil starter rope and slowly allow the starter rope to pull back into the starter.
5. Remove the hairpin clips, screws and wing nuts (if so equipped) that secure the lower handle to the handle brackets. Remove the upper/lower handle subassembly from the handle brackets.
6. Place sufficient wood blocking under rear edge of deck so that there is easy access to the handle brackets retaining nuts on the inside of the deck.

Removal Instructions:

7. Using a 3/4" socket and ratchet, remove left side (LH) shoulder bolt and nut securing the tire to the height adjuster pivot bar. Discard the shoulder bolt, bevel washer and nut.
8. Using a 9/16" socket and ratchet and a 15/16" box or open end wrench, remove the shoulder bolt and nut securing the handle bracket/height adjuster assembly to the deck. Discard the handle bracket/height adjuster assembly and mounting hardware.

Installation Instructions:

The new Handle Bracket/Height Adjuster Assembly, Item 1, comes pre-assembled with a speed nut holding the assembly together. **Do not remove the speed nut.**

9. Position the new LH Handle Bracket /Height Adjuster Assembly, Item 1, onto the left rear side of the mower deck. Ensure that the 3 tabs on the Handle Bracket are set within the holes shown in Figure 2.

NOTE: If the deck does not have the hole marked "R", bend the new handle bracket's outrigger tab back flat.

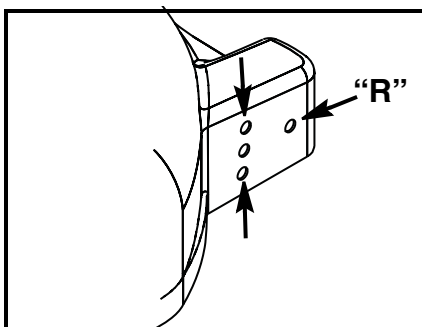


FIGURE 2

10. Using a 9/16" socket and ratchet and a 15/16" box or open end wrench, install a new Hex Flange Lock Nut, Item 9, securing the handle bracket/height adjuster assembly to the deck.

NOTE: Ensure that the Spring Lever is properly set between the Pivot Arm's Assembly's four raised bosses before tightening the hardware. See Figure 3.

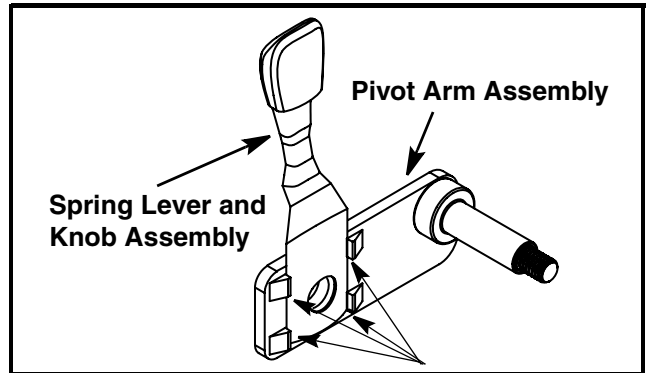


FIGURE 3

11. Install the Wave Washer, Item 10, onto the pivot arms axle stud, install the wheel and secure with a new Hex Flange Lock Nut, Item 9.
12. Repeat Steps 7 through 11 for the right side (RH) handle bracket/ height adjuster assembly.
13. Install the upper/lower handle subassembly onto the new handle bracket pins and secure with the hairpin clips, screws and wing nuts (is so equipped) removed in Step 5.
14. Re-install the starter rope, eye hook and wing nut, removed in Step 4, to the right side of the upper handle.
15. Remove the plastic sheet from between the fuel tank opening and fuel cap.
16. Reconnect the spark plug wire to the spark plug.

This completes this service kit.