



Service Advisory

CHORE PERFORMERS

W-152

Models Affected: W 83MC (12AV83MC790).
Serial Number Range Affected: 2005 and 2006 Model Year Production Only.
Date: **June 26, 2007**
Subject: **Grass build up between baffle and deck. Fix -As-Fail.**

SYMPTOM(S): Cut grass debris migrating into the area between the baffle and the deck may result in the loss of self-propelled drive. The entrapped grass debris can cause the drive belt to be dislodged from either the engine and/or transmission pulley.

CORRECTIVE ACTION:

PARTS REQUIRED:

- 1 -- 731-05903 - Baffle (Doughnut Style)
 - 2 -- 710-0946 - Screw: Truss Head: 1/4"-20 x .625
 - 2 -- 712-0291 - Hex Nut, Center Lock, 1/4"-20
- 1 -- 731-05463A* - Baffle (Main)
* - The 731-05463A baffle is only required if the existing baffle is a 731-05463. See Figures 1 and 8 for identification features of the 731-05463 and 731-05463A.



FIGURE 1

Pre-Service Preparation:

1. Place mower on a flat and level surface, turn engine off and allow engine and muffler to cool.
2. Remove the spark plug wire from the spark plug and ground to engine block. Remove the spark plug

3. Drain the fuel tank (Preferred). (Optional: Remove fuel cap from fuel tank. Place a thin plastic sheet (example: plastic sandwich baggy) over the fuel tank opening and replace the fuel cap trapping the plastic sheet over the fuel tank opening.)

4. Place mower on its side so that the carburetor/air filter are pointed up. Ensure that fuel is not leaking from fuel tank.

5. Using a 5/8" socket and ratchet, remove the bolt retaining the blade to the crankshaft. Remove the blade and blade adapter. Note the sequence of the washers/spacers above the blade adapter so that they are re-installed correctly later.

6. If the existing baffle is a 731-05463, see Figures 1 and 8 for identification feature, proceed to Step 7.

If the existing baffle **DOES NOT** have an open passage way through to the transmission area as shown in Figure 1, proceed to Step 14. (This is a 731-05154 baffle)

Removal of 731-05463 - Main Baffle:

7. Using a 3/8" socket and ratchet remove the one screw near the crankshaft retaining the baffle. See Figure 1 inset.

8. Disconnect the transmission return spring from the baffle slot. See Figure 2.

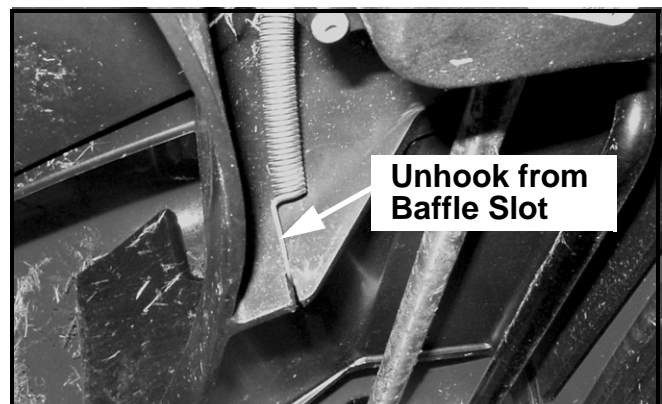


FIGURE 2

9. Using a 9/16" socket and ratchet, remove both rear wheels. **Do Not** remove the drive gear and dust cover.

10. Using a 3/8" wrench or 1/4" drive 3/8" socket and ratchet remove the screws as shown in Figure 3.

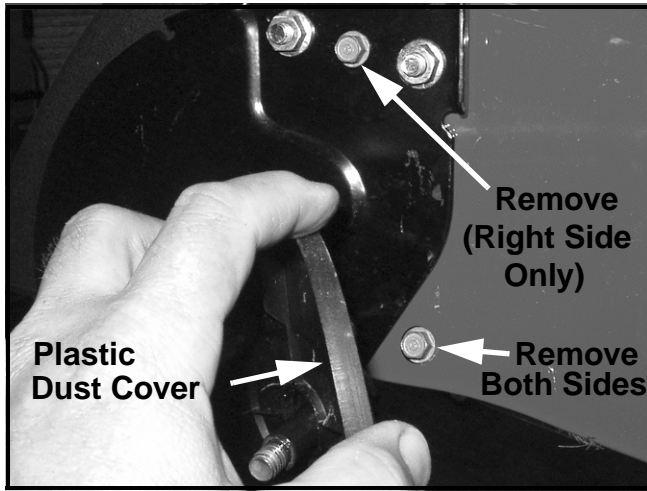


FIGURE 3

11. Rotate the baffle down, forward and out to remove.

12. Clean out all grass and debris that may have accumulated between the baffle and the deck around the crankshaft and transmission. Ensure that the belt path is not obstructed.

Installing the 731-05463A - Main Baffle:

13. Install the new 753-05463A baffle in the reverse order of removing the 753-05463 baffle. Then proceed to Step 14.

Installing the 731-05903 - Doughnut Style Baffle:

14. Clean out all grass and debris that may have accumulated between the baffle and the deck around the crankshaft and transmission. Ensure that the belt path is not obstructed.

15. Refer to Figure 4. Slide the 731-05903 baffle towards the rear of the mower with the locking tabs aligning with the large opening of the main baffle. Depress the locking tabs just enough to allow them to slide to the inside of the main baffle.

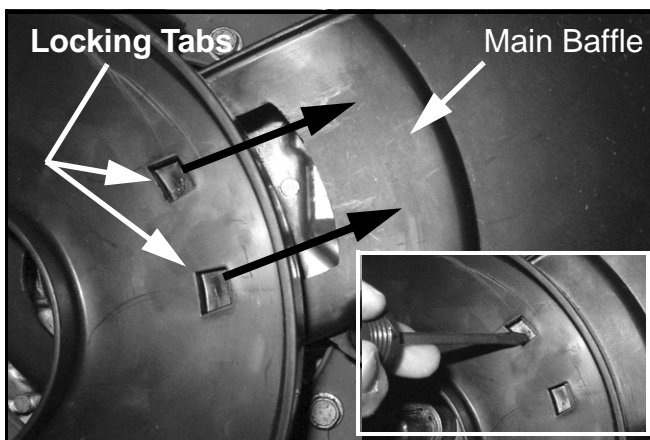


FIGURE 4

16. Seat the 731-05903 against the raised circular section of the deck as shown in Figure 5. Mark the deck at the two baffle mounting holes as shown in Figure 5.

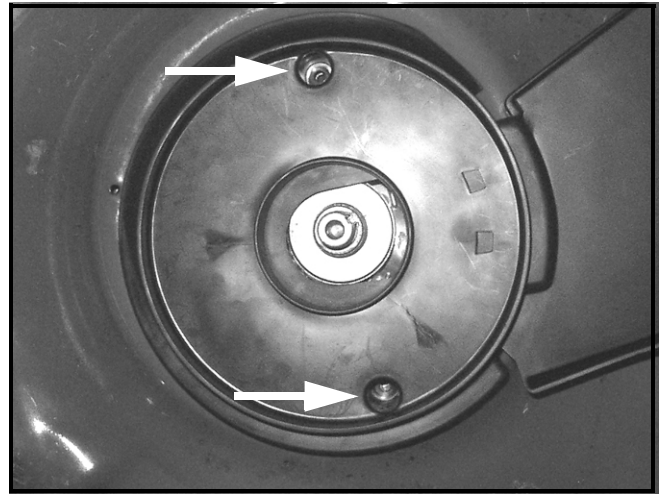


FIGURE 5

17. Remove the 731-05903. Place a back-up plate of 1/8" or 3/16" thick steel between the engine sump and the deck at one of the mounting hole location marks. See Figure 6.

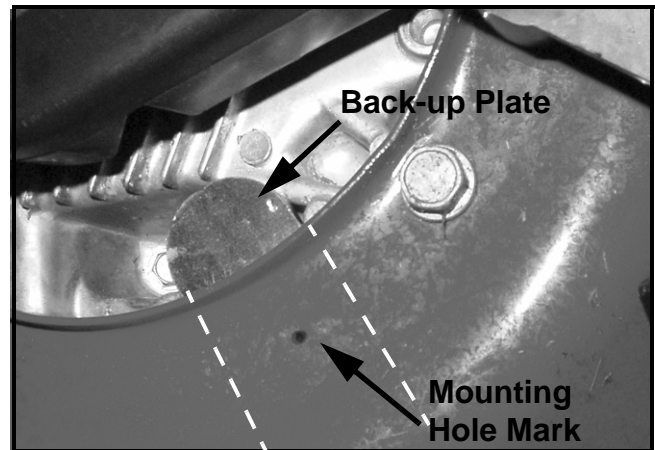


FIGURE 6

18. Drill a 1/8" diameter pilot hole at both marks on the deck. **Ensure that the back-up plate is behind the marks before drilling so as to not over drill into engine sump.**

19. Using a 9/32" diameter drill bit, open both 1/8" pilot holes to 9/32". Remove all burrs from both sides of the holes.

20. Re-install the 731-05903 doughnut baffle. Using a pair of thin long nose pliers or needle nose vise-grips, position one of the 1/4"-20 center lock hex nuts, 712-0291, over one of the baffle mounting holes, between the deck and the engine sump. See Figure 7.

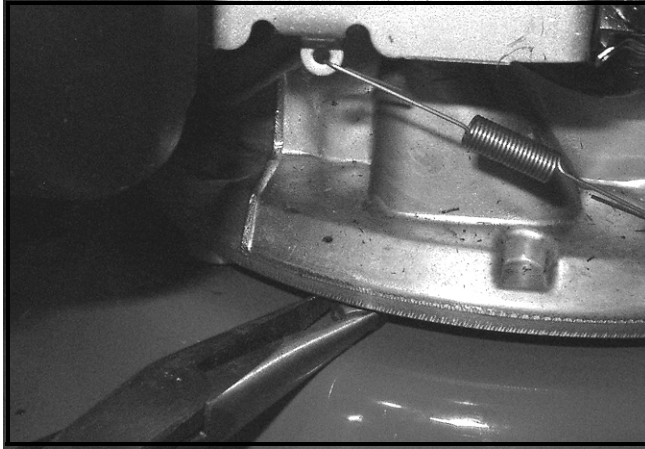


FIGURE 7

21. Using a #2 phillips head screwdriver, secure the baffle to the deck with the 1/4"-20 x .625 truss head screw, 710-0946. Do not over tighten.

22. Repeat Steps 20 and 21 for the other baffle mount.

23. Lubricate the engine crankshaft and the inner surface of the blade adapter with light oil. When re-installing the cutting blade ensure that the blade bolt is torqued to 450 to 600 In-Lbs.

23. This completes the service advisory repair.

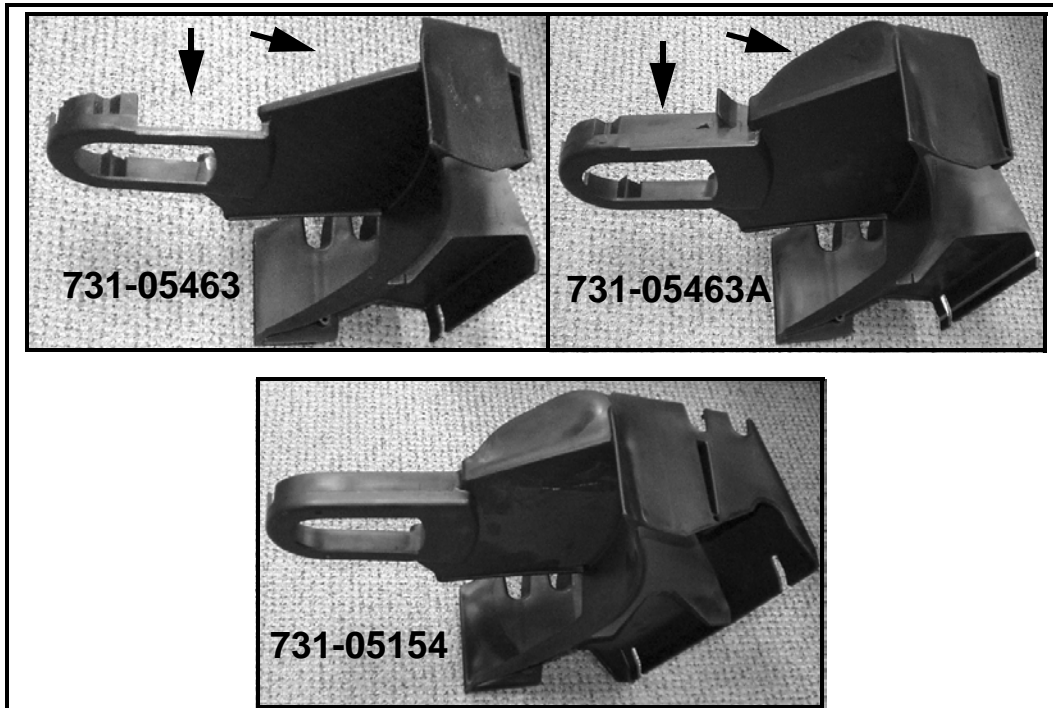


FIGURE 8

Warranty: Normal warranty terms apply.

With 731-05463A and 731-05903 Baffles Installation:

Indicate Service Advisory **W-152** and **P/N 731-05463** as the original failed part on the claim. Repair time allowance is **42 Minutes (0.7 Hrs)**. List model and serial number of the unit.

With 731-05903 Baffle Only Installation:

Indicate Service Advisory **W-152** and **P/N 731-05154** as the original failed part on the claim. Repair time allowance is **18 Minutes (0.3 Hrs)**. List model and serial number of the unit.

SERVICE MANAGER	PARTS MANAGER	SALES MANAGER	SERVICE TECH.	SERVICE TECH.

Circulate and Initial