



Service Advisory

CHORE PERFORMERS

W-139

Model Affected: W 83MC (12AV83MC790)
Serial Number Range Affected: November 1, 2005 through July 31, 2006. (“...K015...” through “...G316...”)
Date: **July 12, 2006**
Subject: **Drive belt coming off of transmission pulley while engaging and disengaging wheel drive**

Required Action: This repair is to be considered **Fix-As-Fail**.

Required Parts: (Qty. 1) 738-04247 .250 x 1.00” Shoulder Screw. (Qty. 1) 710-3143 #10-24 Self Tapping Screw.

CORRECTIVE ACTION:

NOTE: Left & right sides are determined from the operator's position behind the handle bar facing forward.

1. Place unit on level ground, turn off unit, remove spark plug wire from spark plug and allow engine & muffler to cool.
2. To prevent gasoline leakage, drain fuel tank. Ensure oil dipstick is tight.
3. Set wheel height adjuster to the highest cutting height.
4. Loosen upper handle knobs to allow upper handle to fold back down. Leave the knobs loose.
5. Place unit on it's side so that the air filter and carburetor are facing up.
6. Using a 5/8” socket & breaker bar, remove the blade including adapter & hardware. Note proper assembly sequence for reassembly later.
7. Using a 3/8” socket & ratchet remove the self-tapping screw that secures the deck baffle. See Figure 1.

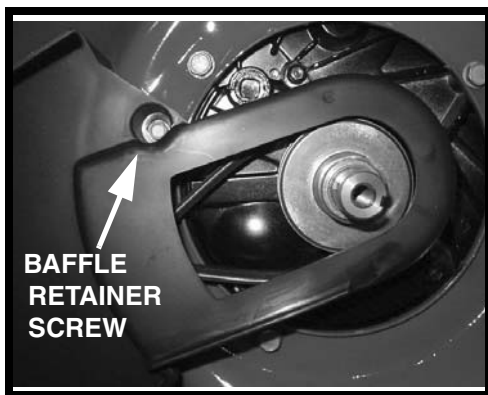


FIGURE 1

8. Using a 9/16” socket & ratchet, remove the right rear wheel.

9. Using a 3/8” ratchet style box wrench & 3/8” socket, 1/4” drive extension & 1/4” drive ratchet, remove the baffle retaining screws (total of 3). See Figure 2.

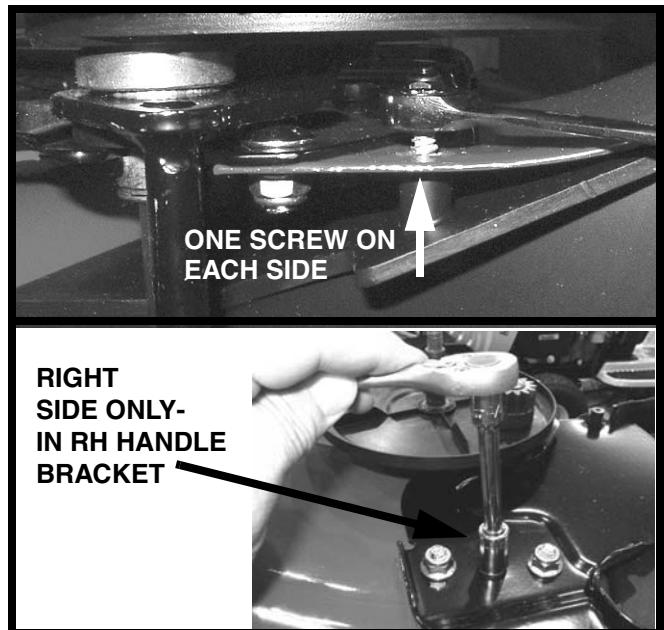


FIGURE 2

10. Note how the transmission's pull back spring is attached to the transmission. Unhook the spring from the baffle slot. See Figure 3.

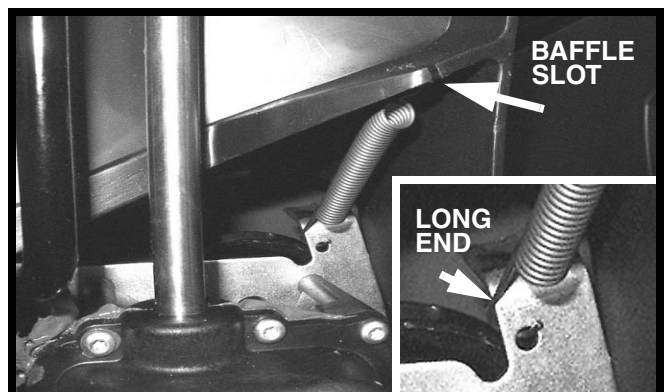


FIGURE 3

11. Rotate engine pulley end of baffle out from inside deck & pull out from around rear axle and transmission. Set baffle aside.

12. Unhook the speed control cable's barrel end from the rear of the deck. See Figure 4.

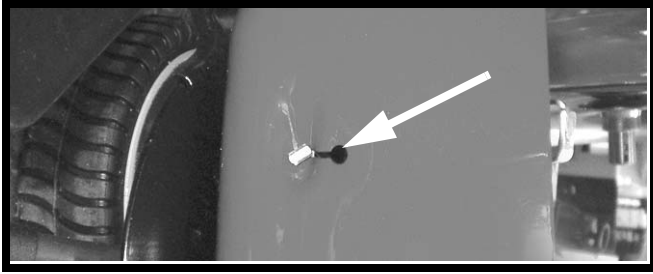


FIGURE 4

13. With upper handle folded as stated in Step 4, carefully pull cable through deck hole while rotating transmission about its axle until the bottom of the transmission is against the height adjuster rod. See Figure 5.



FIGURE 5

14. Carefully remove the drive cable's plastic end fitting from the transmission's clutch arm. This will permit easy reassembly of cable end into the deck later.

15. Using a T20 TORX bit, remove the plate mounting screw on the transmission shown in Figure 5.

16. Using a T25 TORX bit, carefully thread the 710-3143, thread forming screw, into the hole as shown in Figure 6. Form threads to a depth of 5/16" to 3/8". Remove tool.

NOTE: It is not recommended to use a standard tap to cut the threads into the plastic transmission cover. Using a standard tap could remove too much plastic material. This would not allow the shoulder screw to hold firmly.

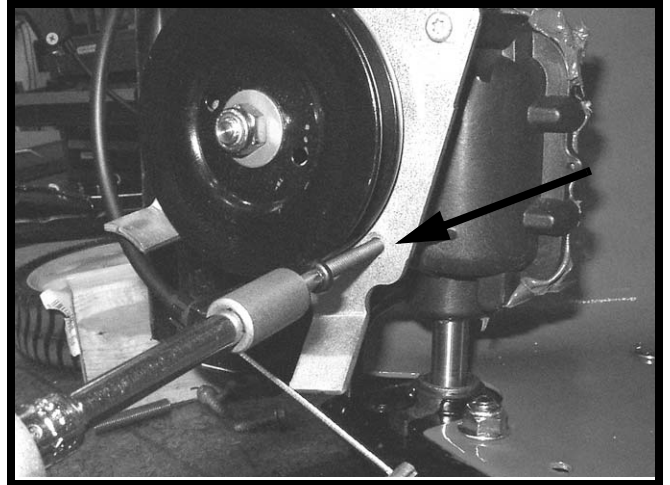


FIGURE 6

17. Place drive belt onto the transmission pulley as shown in Figure 7.

18. Using a 1/8" Allen wrench, install the 738-04247 shoulder screw and gently tighten securely.

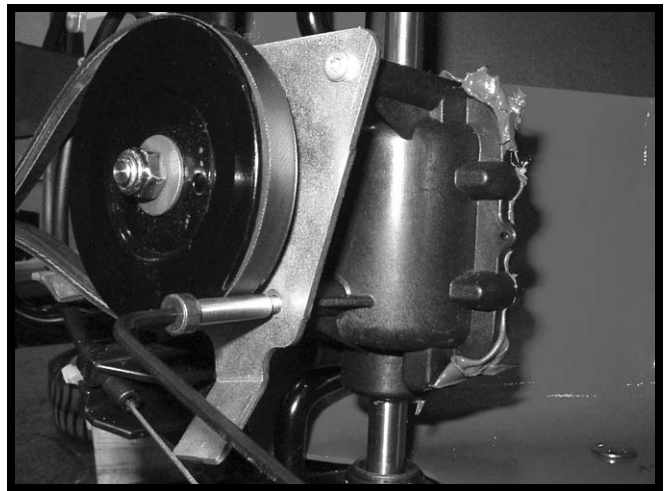


FIGURE 7

19. Reassemble unit in reverse order of disassembly.

20. Test run unit engaging & disengaging drive to ensure proper operation.

Warranty: Normal warranty terms apply. Indicate Service Advisory **W-139** and **707-04644A** as the original failed part on the claim. Repair time allowance is 0.5 Hrs.

SERVICE MANAGER	PARTS MANAGER	SALES MANAGER	SERVICE TECH.	SERVICE TECH.

Circulate and Initial