



# Service Kit

## 753-05096A

Date: 6/6/2005

Subject: Service replacement for the Speed Control Lever Assembly.

Models Affected: 2005 Model Year, 800 Series Self-Propelled Walk Behind Mowers

**Read through and understand these instructions completely before proceeding with repair.**

### PURPOSE:

This service kit provides a re-designed speed control lever assembly which improves the operation of the speed control mechanism. This improvement has been accomplished by increasing the mechanical advantage of the lever, thereby requiring less effort to engage and hold the speed control mechanism at the desired speed.

**NOTE:** These materials are prepared for use by trained technicians who are experienced in the service and repair of equipment of the kind described in this publication, and are not intended for use by untrained or inexperienced individuals. Such individuals should seek the assistance of an authorized service technician or dealer.

**NOTE:** Save this Instruction Sheet. Refer to it when ordering replacement parts.

## Service Kit Contents

(See Figure 1)

ITEM NO.	PART NUMBER	QTY	DESCRIPTION
1	731-05388	1	LEVER: CONTROL: DRIVE: SPEED
2	731-05389	1	COVER: CONTROL: UPPER HALF
3	731-05390	1	COVER: CONTROL: LOWER HALF
4	731-1059	1	CAP: MOUNTING: CABLE
5	710-1667A	5	SCREW: HL #10-16 X.750: CSKPHI
6	777122471*	1	LABEL:MOWER HANDLE(TROY-BILT)
7	777122475*	1	LABEL:MOWER HANDLE(YARDMAN)
8	769-10896A	1	THIS INSTRUCTION SHEET

\* - Labels not shown.

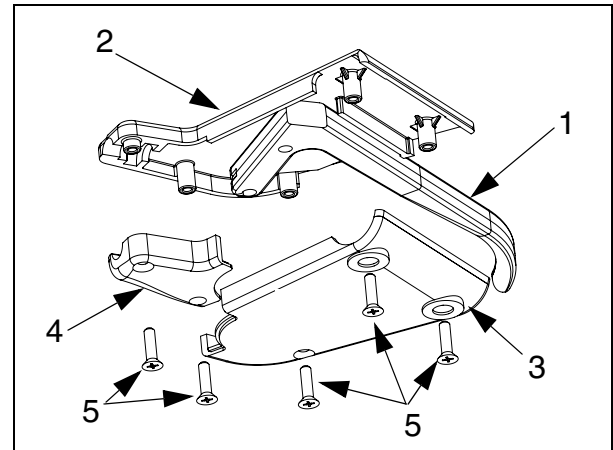


FIGURE 1

### Installation Instructions:

1. Turn off engine and allow engine to cool. Remove spark plug wire from the spark plug and ground to engine block.
2. From the underside of the Speed Control Lever Housing, with a #1 phillips head screw driver, remove and discard the five screws that hold the two halves of the housing together and to the handle.
3. Discard the existing control lever, cable mounting cap and upper and lower housings.
4. Locate the Upper Half Control Cover, Item 2.
5. Install the new Control Lever, Item 1, onto the plastic boss as shown in Figure 2.
6. Take the existing speed control cable and install the barrel end into the Control Lever cable end socket as shown in Figure 2.

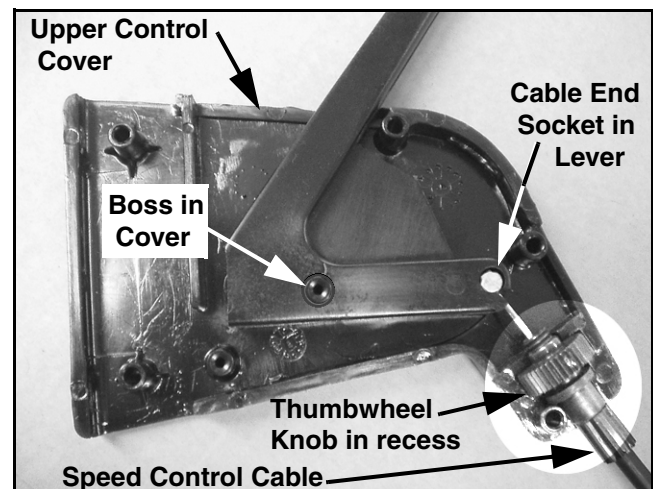
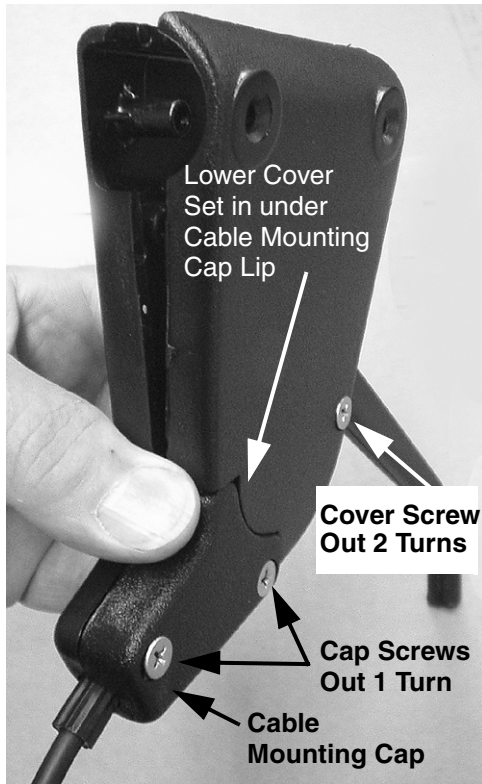


FIGURE 2

**NOTE:** To facilitate assembly, pull on the metal barrel end of the cable to ensure as much of the metal cable is extended from the cable sheath.

7. Place the speed control cable's thumbwheel knob into the Upper Control Cover recess as shown in Figure 2.

8. Attach the new Cable Mounting Cap, Item 4, to the Upper Control Cover, Item 2, with two (2) Screws, Item 5. Tighten screws then back off one (1) full turn. See Figure 3.



**FIGURE 3**

9. Carefully place the Lower Control Cover, Item 3, under the lip of the Cable Mounting Cap, Item 4 as shown in Figure 3. Place one screw in Lower Cover, as shown in Figure 3 and leave two turns out from tight.

**NOTE:** Do not close Lower Control Cover half onto the Upper Control Cover half until assembly is installed onto the upper mower handle.

10. While ensuring that the Speed Control Lever remains seated in the Upper Control Cover, carefully place the Speed Control Assembly onto the upper mower handle with the Upper Control Cover mounting tabs set into the two holes in the upper mower handle.

11. Close the Lower Control Cover half onto the Upper Control Cover half making sure that the plastic boss in the Lower Control Cover sets properly into the Control Lever

12. Install and tighten two (2) Screws, Item 5, into the Lower Control Cover to hold the Control Assembly to the upper mower handle.

13. Tighten the two (2) screws that attach the Cable Mounting Cap to the Upper Control Cover and tighten the one (1) remaining screw that fastens the two cover halves together.

14. Test operation of the Speed Control Assembly to insure that the Drive Control Lever pivots freely.

15. Replace spark plug wire onto the spark plug and start the engine. Test the Speed Control for proper operation. Refer to the Operator's Manual to adjust the cable adjuster as needed.

16. Select and install the appropriate control label depending on the brand of the walk behind mower that this kit has been installed on.

The yellow and black "Traction Control System" label is used on YardMan branded units.

The silver and black "Comfort Grip" label is used on Troy-Bilt branded units.

17. This completes the installation of this service kit.