



# Service Kit 753-04861

Date: May 13, 2004

Subject: Replacement Dash Panel

Models Affected: Not Applicable

**PURPOSE:** Use this service kit when it becomes necessary to replace Dash Panel, P/N 731-1096, 731-1096A or 731-1096B which are no longer available.

**NOTE:** *These materials are prepared for use by trained technicians who are experienced in the service and repair of equipment of the kind described in this publication, and are not intended for use by untrained or inexperienced individuals. Such individuals should seek the assistance of an authorized service technician or dealer.*

**NOTE:** *Save this Instruction Sheet. Refer to it when ordering replacement parts.*

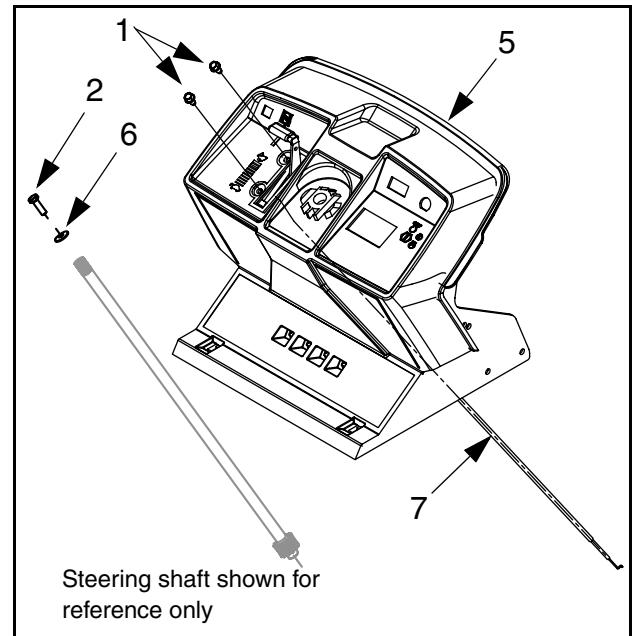
## Service Kit Contents (See Figure 1)

ITEM NO.	PART NUMBER	QTY	DESCRIPTION
1	710-0599	2	SCREW:TAPTITE: 1/4-20 X 0.50LG
2	710-0643	1	SCREW: HEX CAP: 5/16"-18 X 1.0: LOCK: GR5
3	726-0240	2	TIE: CABLE: 3/16 X 6.25" LG. (NOT SHOWN)
4	726-0209	2	TIE: CABLE: 11/32 X 30.66" LG. (NOT SHOWN)
5	731-04028	1	PANEL: DASH:600: 0 STYLE W/ AMP/LT
6	736-0242	1	WASHER: BELL: .34 X .872 X .060
7	746-04023B	1	CABLE:THROTTLE: 35.5" LONG
8	769-01214	1	THIS INSTRUCTION SHEET

### Pre-Installation Instructions:

1. Turn engine off and remove key from the ignition switch.
2. Depress the clutch/brake pedal down fully. Place transmission shift lever in neutral position and set the the brake to the ON position.
3. Allow engine and muffler to cool before continuing this service.
4. Disconnect spark plug wire(s) and ground against the engine block to prevent un-intended starting.
5. Remove the black battery cable from the negative battery terminal and secure cable away from the battery so that there is no possibility of the black cable touching either battery terminal.

**NOTE:** *The throttle cable supplied in this kit may be longer than the throttle cable that was originally on the unit. When installing the new throttle cable a modified routing may be required to ensure proper throttle operation.*



**FIGURE 1**

6. Refer to the illustrated parts list section in the Operator's Manual for the hood/grille style of the unit, part nomenclature, location and assembly configuration.

**NOTE:** *Retain all hardware and parts unless otherwise instructed.*

- 7A. **Units without side panels:** Remove the two screws and nuts, at the hinge point, that secure the hood to the grille. Remove the hood from the unit.

- 8A. Remove the two screws and nuts that secure the grille support rods to the dash panel.

- 7B. **Units with side panels:** Remove the two screws and nuts, at the hinge point, that secure the hood to the grille and side panels. Remove the hood from the unit.

8B. Remove the remaining three screws that secure the left hand side panel to the dash panel and grille. Repeat for the right hand side panel.

**NOTE:** *The grille is now supported by only two fasteners at its base. Do not lean on or twist grille or damage to the grille may result.*

9. Cut and discard the plastic tie(s) securing the gas tank to the gas tank support bracket.

10. Remove the steering wheel cap from the center of the steering wheel.

11. Remove and discard the hex screw and bell washer securing the steering wheel to the steering shaft, observing that the cupped side of the bell washer is towards the steering wheel. Remove the steering wheel and steering bellows from the steering shaft.

**For units equipped with a separate choke control:**

12A. Ensure that the choke control knob is pushed in towards the dash panel as far as it will go. Locate the choke cable attach point at the engine.

13A. With a permanent marker, mark the choke cable housing on both sides of the choke cable clamp. This will facilitate reconnection of the cable later in the instructions.

14A. Loosen the choke cable clamp on engine and disconnect cable end from choke lever on engine.

**For units equipped with a combination choke/throttle control or separate throttle control:**

12B. Ensure that the control lever is set in the choke on position for combination choke/throttle controls or the fast position (at rabbit symbol) for throttle only controls. Control lever should be full forward/up.

13B. With a permanent marker, mark the position of the throttle lever on the engine that the cable attaches to. This will facilitate setting the new cable position later in the instructions.

14B. Loosen the cable clamp on the engine and disconnect the choke/throttle cable or throttle only cable from the engine.

15. Carefully reposition the gas tank to allow access to the back of the dash panel. **CAUTION:** Do not lay gas tank on it's side that will result in leaking fuel or position in such a way as to pull on the fuel line.

16. Remove the nut securing the ignition switch to the dash panel. Push the ignition switch out from the dash panel towards the back of the dash panel.

17. If so equipped, disconnect the two wires from the back of the light switch.

18. Remove the light switch by squeezing the two tabs on the light switch body, from the back of the dash panel, and gently push the switch out from the front of the dash panel.

19. If so equipped, remove the ammeter by squeezing the four tabs on the ammeter body, from the back of the dash panel, and gently push the ammeter out from the front of the dash panel. **DO NOT** cut or remove the wire loop from the ammeter.

20. Carefully rotate the ammeter so that it is positioned diagonally across the ammeter hole and feed the ammeter through the dash panel to the back of the dash panel.

21. Remove the six (6) screws that attach the dash panel to the tractor frame, two (2) on each side of the dash panel and two (2) at the base facing the tractor's seat.

22. Remove and discard the original dash panel with throttle cable.

23. If so equipped, remove the separate choke cable from the old dash panel by squeezing the two tabs on the back side of the dash and pushing the control out through the dash panel front. Install the choke cable in the same orientation in new Dash Panel, Item 5.

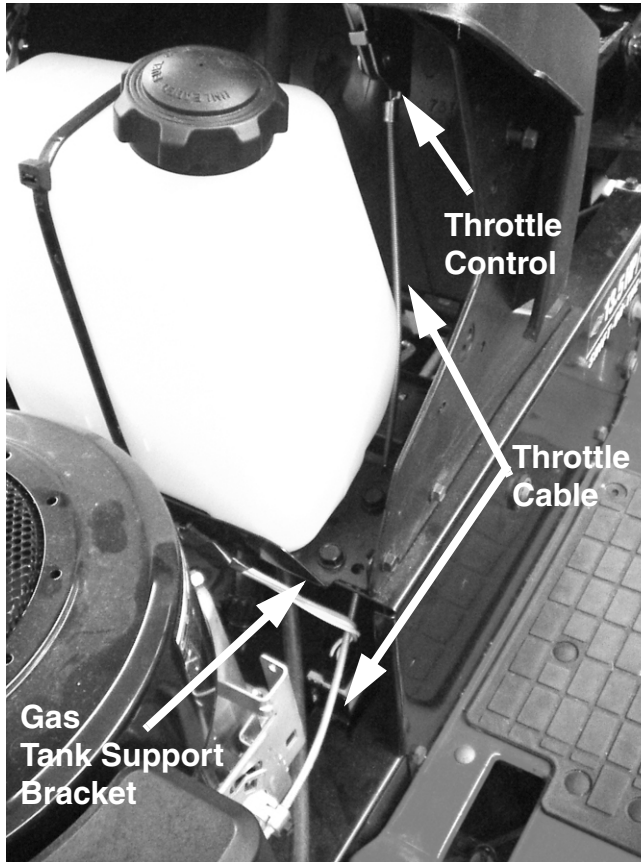
24. Feed the new Throttle Cable, Item 7, lever from the back of the Dash Panel through the slot in the new Dash Panel, Item 5, and secure using the two (2) Tap-tite Screws, Item 1, supplied. Do not over tighten or damage to the Dash Panel may result.

25. Slip the new Dash Panel onto the steering shaft and position in it's mounted position. Do not fasten in place at this time.

26. Check the routing of the choke cable. Initially route the cable in the same manner that the choke cable was originally routed. **DO NOT** install the cable ties at this time. Check that the choke cable is not kinked. Bends must be gentle and as large as possible. Do not route against exhaust pipes or secure to moving parts.

27. If the choke cable's routing is satisfactory attach choke cable end to the engine choke lever, position choke control and engine's choke lever as observed in Step 12A and marked in Step 13A. Secure cable housing with the cable clamp removed in Step 14A. Check that choke control functions properly by closing the choke plate when the choke control is pulled out and the choke is fully open when the choke control is pushed in.

28. The new throttle control's cable's exits from the bottom when secured to the dash panel. Route the throttle cable down and under the gas tank support bracket then forward to the throttle linkage on the engine. See Figure 2.



**FIGURE 2**

29. Check the routing of the throttle cable. DO NOT install the cable ties at this time. Check that the throttle cable is not kinked. Bends must be gentle and as large as possible. Do not route against exhaust pipes or secure to moving parts.

30. If throttle cable's routing is satisfactory attach throttle cable end to the engine throttle lever, position throttle control and engine's throttle lever as observed in Step 12B and marked in Step 13B. Secure cable housing with the cable clamp removed in Step 14B. Ensure that the throttle control will operate the engine's throttle lever through its full range.

31. Using the two plastic Cable Ties, Item 3, supplied, loosely secure the throttle and choke cables to non-moving structure to maintain clearance from moving parts and routing.

32. Secure the gas tank as it was originally secured with either one or two plastic Cable Ties, Item 4.

33. Secure new Dash Panel, Item 5, to tractor frame using the hardware removed in Step 21.

34. If so equipped, reinstall the light switch, ammeter, and ignition switch to the Dash Panel.

35. Reinstall the bellows and steering wheel. Install the Bell Washer, Item 6, (cup side against steering wheel) and the Hex Cap Screw, Item 2, and tighten.

36. Reinstall side panels or grille support rods.

37. Reinstall hood.

38. Re-connect spark plug wire(s).

39. Reconnect the black battery cable to the negative terminal of the battery.

**Post Service Checkout:**

40. Pull choke control out. Set throttle control to the fast (rabbit) position. Start unit. As engine warms up choke should be pushed in. Engine

41. Operate throttle control. Engine speed (RPM's) should decrease to an idle speed in the slow (turtle) position and increase in speed as the throttle control lever is moved towards the fast (rabbit) position.

42. If either choke or throttle control operation is questionable revisit the positioning of the cable clamps at the engine and their cable routing.

# NOTES

