



Service Kit 753-04509

Date: April 5, 2004

Subject: Transmission Drive Belt Guides for 33" Wide Cut Self-Propelled Walk Behind Mowers.

Models Affected: 12A-753B063, 12B-753B063 and GWI Troy-Bilt Models: 34071, 34072, 34073, 34087, 34089, 34342 and 34343.

PURPOSE: This service kit applies to 33 inch Wide Cut Walk Behind Mowers manufactured prior to September 30, 2003, date code (...I303...). The long run of the wheel drive belt may tend to sag down on the transmission pulley and may fall off. The belt may also not fully disengage from the engine sheave. When the engine is running, the machine in gear, and the operator presence control engaged, the machine may "creep" forward or may be difficult to shift.

*This service kit supersedes the **Installation of Wheel Drive Belt Guards Update (Pages 16 through 19)** of Section - **Troy-Bilt Service Manual / 753 Wide Cut Mower** of the **2004 MTD Technical Handbook**.*

NOTE: These materials are prepared for use by trained technicians who are experienced in the service and repair of equipment of the kind described in this publication, and are not intended for use by untrained or inexperienced individuals. Such individuals should seek the assistance of an authorized service technician or dealer.

NOTE: Save this Instruction Sheet. Refer to it when ordering replacement parts.

Service Kit Contents (See Figure 1)

REF. NO.	PART NUMBER	QTY	DESCRIPTION
1	710-04087	1	SCR: TL: 3/8"-16 x 1.00: HEXHD
2	710-04262	1	SCR: CRG: SHORT SQ NECK: 3/8"-16
3	710-0501	1	HHCS: 1/4"-20 X 2.0: GR5: STD
4	712-3000	1	NUT:HEXLK:3/8"-16: GRB: CTRLK
5	712-3027	1	NUT: FLGLK: 1/4"-20: GRF
6	732-04104	1	GUIDE: BELT
7	732-04105	1	GUIDE: BELT
8	736-0262	2	WASHER: FLAT: .385 X .870 X .092
9	736-3050	1	WASHER: FLAT: .405 X .812 X .051
10	736-3090	1	WASHER: FLAT: .260 X .720 X .060
11	787-01112	1	GUIDE: BELT
12	769-01041	1	THIS INSTRUCTION SHEET

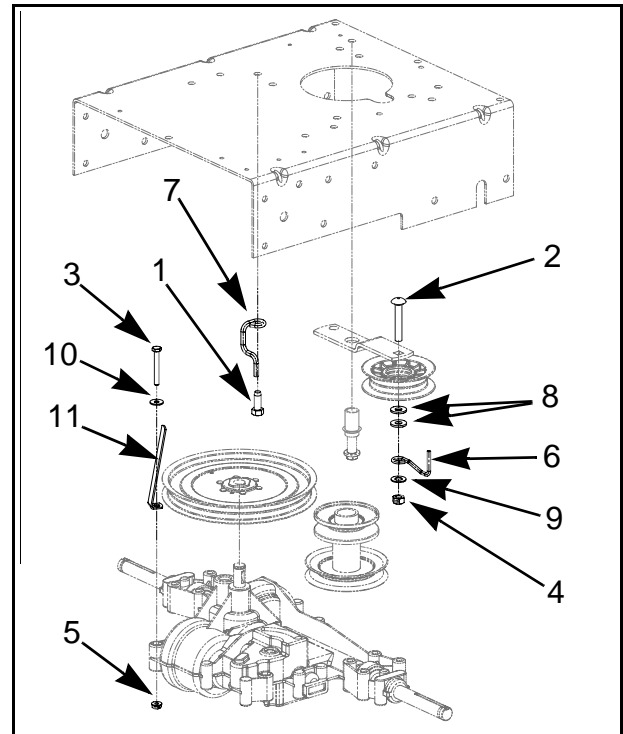


FIGURE 1

Pre-Service:

NOTE: All references to left, right, front and rear of the unit are determined by standing in the operator's position and facing the direction of forward travel.

1. Remove the key from the ignition switch, if so equipped.
2. Disconnect spark plug wire from the spark plug and ground to engine block.
3. Allow engine and muffler to cool before proceeding with belt guides installation.

Installation Instructions:

4. Using a 1/2 inch socket, remove the four flange screws securing the Belt Guard cover to the mower support frame. See Figure 2.

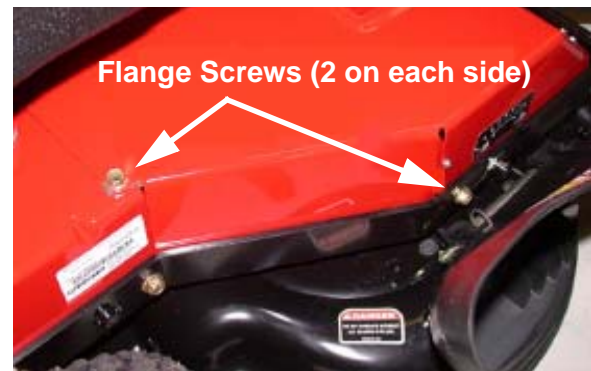


FIGURE 2

5. Using a 9/16 inch socket remove the lock nut securing the idler pulley to the idler arm. Discard the existing bolt, washer and lock nut. See Figure 3.

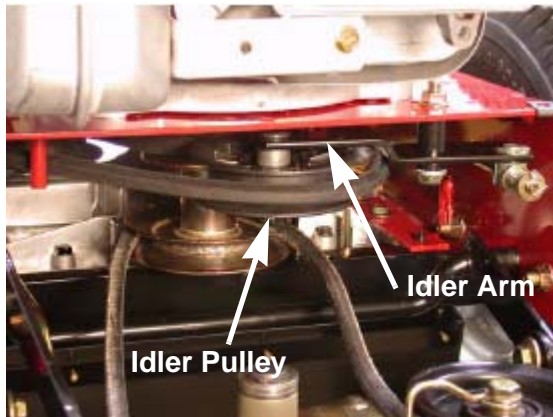


FIGURE 3

6. Re-install the idler pulley to the idler pulley arm using Carriage Bolt (Item 2), two Flat Washers (Item 8), Belt Guide (Item 6), Flat Washer, Item 9 and Hex Lock Nut, Item 4, as shown in Figure 4.

NOTE: Position the belt guide towards the front of the unit. See Figure 5.

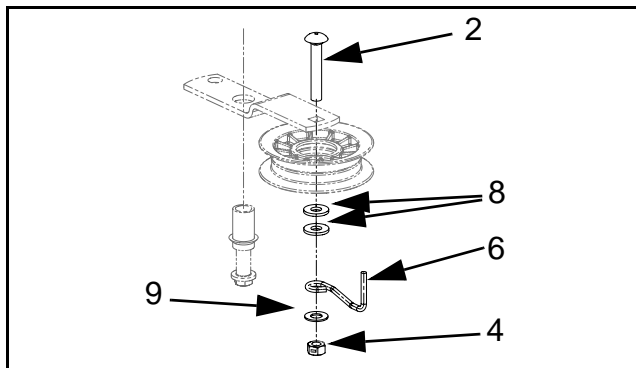


FIGURE 4



FIGURE 5

7. Re-install the belt guard cover removed in Step 4.

8. Using a 1/2 inch socket and extension, remove the two flange screws that secure the flap bracket to the frame. Remove the flap bracket and set it aside. See Figure 6.

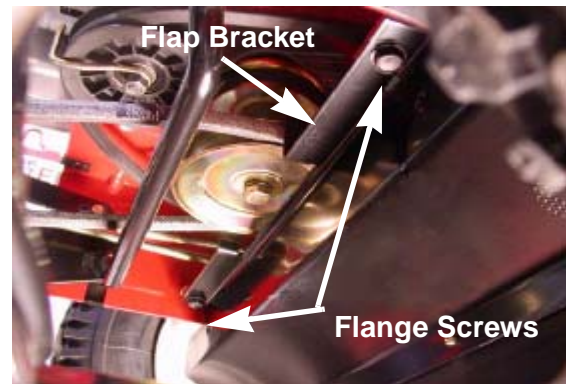


FIGURE 6

9. Using a 9/16 inch socket and extension, remove and discard the left rear engine mounting hex cap screw. See Figure 7.

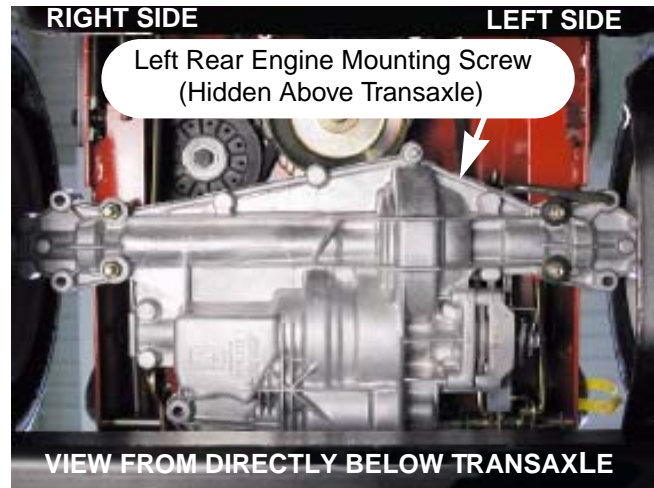


FIGURE 7

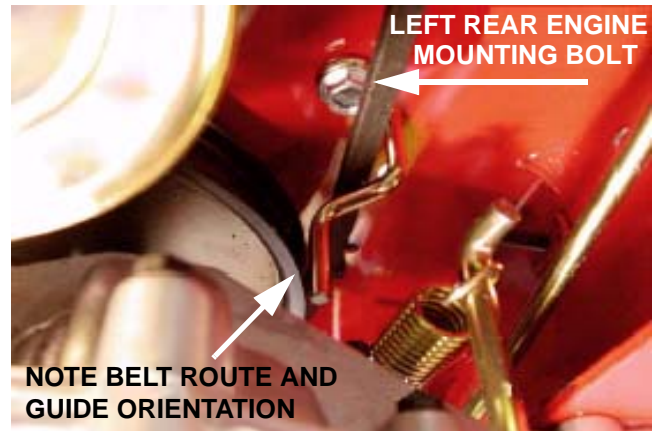


FIGURE 8

10. Install Belt Guide, Item 7, using new Hex Head Screw, Item 1. Align the Belt Guide so that the V belt is on the inside and on top of the guide. See Figure 8.

NOTE: Make sure that the V belt does not drag on the Belt Guide when drive is engaged and that the lower portion of the Belt Guide is at least 1/8 inch away from the pulley. See Figure 8.

11. Locate the left rear bolt hole (no bolt in this boss) on the transaxle. See Figure 9.

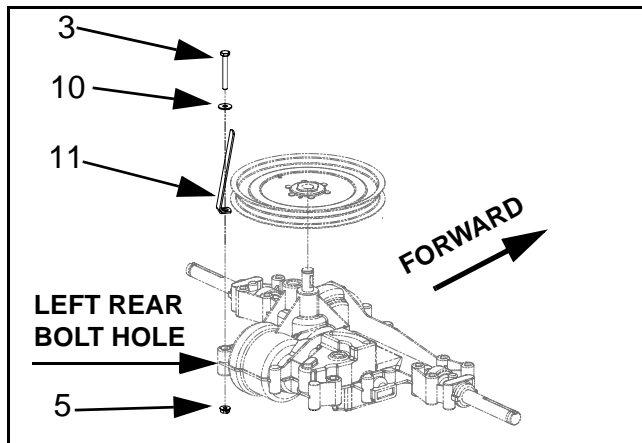


FIGURE 9

12. Install Belt Guide, Item 11, using Hex Head Cap Screw, Item 3, Flat Washer, Item 10, and Flange Lock Nut, Item 5, as shown in Figure 9.

13. Position the Belt Guide, Item 11, as shown in Figure 10. Ensure that Belt Guide just clears the pivot shaft and has about 1/8 inch belt clearance.

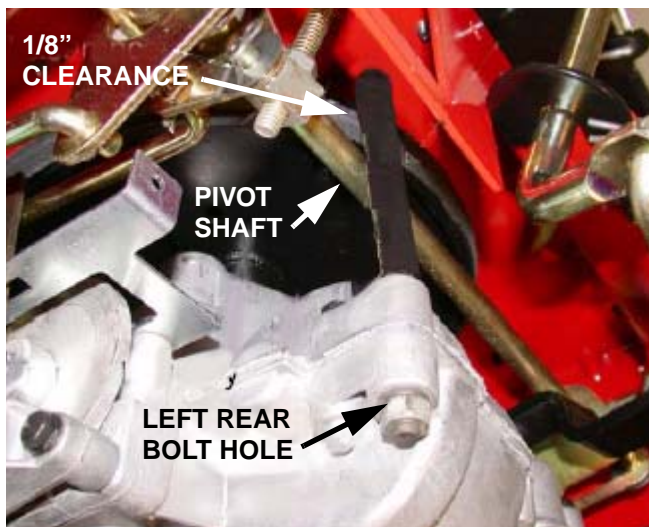


FIGURE 10

14. This completes the installation of this Service Kit.

Post-installation Check-out:

15. Re-connect spark plug wire to the spark plug.

16. Start and run unit. Engage and disengage drive wheels several times in each of the drive speeds. Ensure that when drive is in neutral or disengaged that the unit does not creep and belt does not come off of drive pulleys.

17. After running unit, stop and turn off the engine and remove the key. Disconnect spark plug wire from the spark plug and ground to engine block.

18. Check belt for indications of rubbing on the belt guides. Adjust belt guides if necessary.

19. Repeat Steps 15 through 18 as necessary.

GWJ Engine Pulley Belt Guide Kit P/N 1770557:

Some older GWJ manufactured units have a flap bracket design that used removeable engine pulley belt guides. See Figure 11.

GWJ updated the old style belt guides, 1768398, to a new style, 1769522, which is available (not a part of this kit) as an update kit, P/N 1770557. If your unit uses the old style belt guides obtain the update kit. See Figure 11.

NOTE: The latest production of these units uses a new flap bracket that integrates the belt guides into the flap bracket stamping. This latest production flap bracket will **NOT** fit on older units.

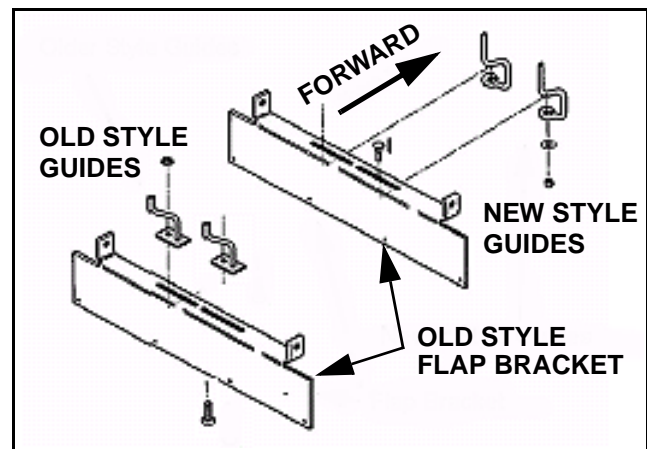


FIGURE 11

NOTES

