



Supplement Sheet

Date: April 05, 2010

Subject: New Trail Shield and Retainer Clip Installation Instructions

Models N/A
Affected:

Read through and understand these instructions completely before proceeding with assembly.

**Never operate mower without the proper trail shield, discharge cover, grass catcher, blade control or other safety protective devices in place and working. Never operate the mower with damaged safety devices.
Failure to do so can result in personal injury.**

PURPOSE: This supplement sheet provides installation instructions for the new design trail shield and retaining clips included with the replacement deck. This instruction sheet is included with different size replacement decks. The correct length trail shield is packaged for this replacement deck. For future reordering, measure the trail shield included with this replacement deck and note below which trail shield was supplied with the replacement deck.

NOTE: Save this instruction sheet. Refer to it when ordering replacement parts.

731-06952 - SHIELD: TRAIL (Long) (4.54" x 17.50")
731-06953 - SHIELD: TRAIL (Short) (4.54" x 16.69")
732-04631 - CLIP: RETAINING (2 Required)

Installation Instructions:

1. The two trail shield clips are installed from the underside of the deck into the 1/2" square cutouts in the back of the deck. See Figure 1.

2. For both clips, align the pointed end of the clip into the square cutout, see Figure 1 inset "A", and push the clip in until it snaps into the locked position, see Figure 1 inset "B".

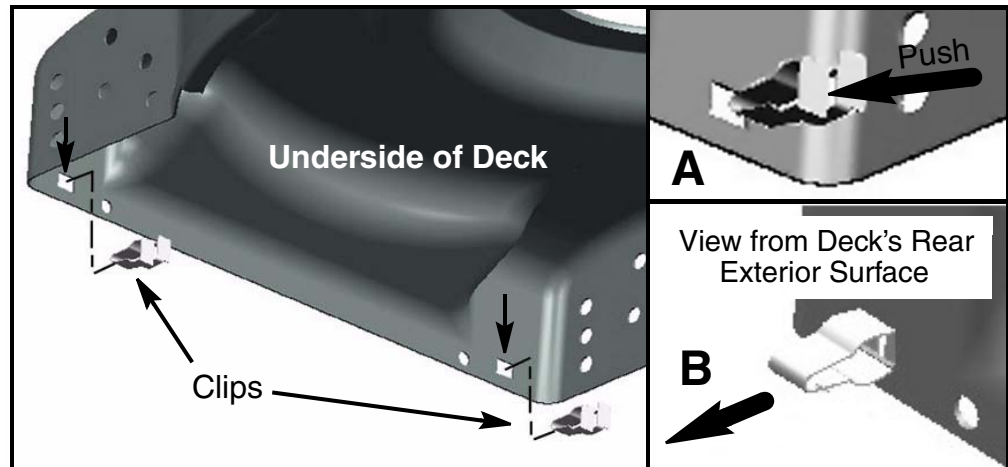


FIGURE 1

3. With both clips correctly inserted into the deck (), insert one end of the trail shield's 3/8" diameter top spine into one of the clips as shown in Figure 2.

4. Carefully and gently bow the trail shield's 3/8" diameter top spine, in the middle, away from the deck, just enough so the free end of the top spine can be inserted into the other clip. See finished installed view Figure 3.

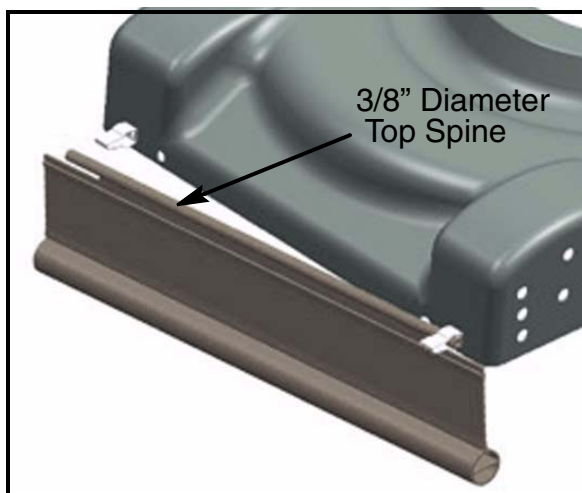


FIGURE 2

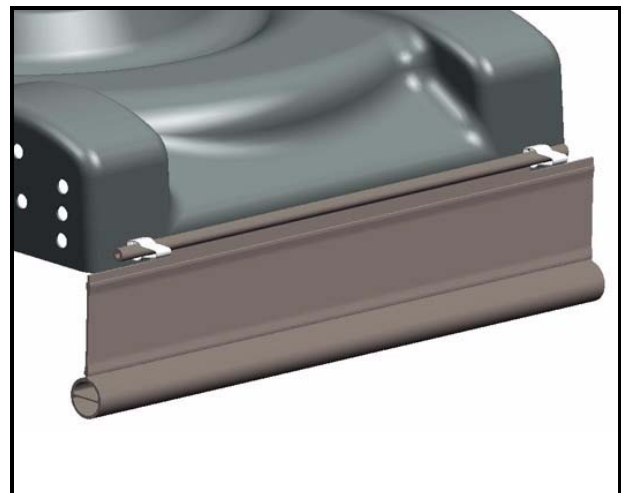


FIGURE 3