



Service Kit

753-06366

Date: March 16, 2010

Subject: Service Replacement for the
731-04134A --- 21" Walk Behind
Mower Rear Door

Models Affected: N/A

Read and understand these instructions thoroughly before proceeding.

PURPOSE: This kit supplies a new rear door and the correct pivot rod necessary to replace the 731-04134A rear door which is no longer available. This kit addresses both low and high rear wheel models that used the 731-04134A.

NOTE: These materials are prepared for use by trained technicians who are experienced in the service and repair of equipment of the kind described in this publication, and are not intended for use by untrained or inexperienced individuals. Such individuals should seek the assistance of an authorized service technician or dealer.

NOTE: Save this Instruction Sheet. Refer to it when ordering replacement parts.

Service Kit Contents

(See Figure 1)

ITEM NO.	PART NUMBER	QTY	DESCRIPTION
1	731-06847	1	DOOR:RR:PLASTIC: 21"
2	747-04587	1	ROD:PIVOT: DOOR (8 " REAR WHEELS)
3	747-04588	1	ROD:PIVOT: DOOR (12 " REAR WHEELS)
4	*	1	THIS INSTRUCTION SHEET

* - Not Available Separately

NOTE: Left (LH) and right (RH) sides are determined from the operator's position and facing in the forward direction.

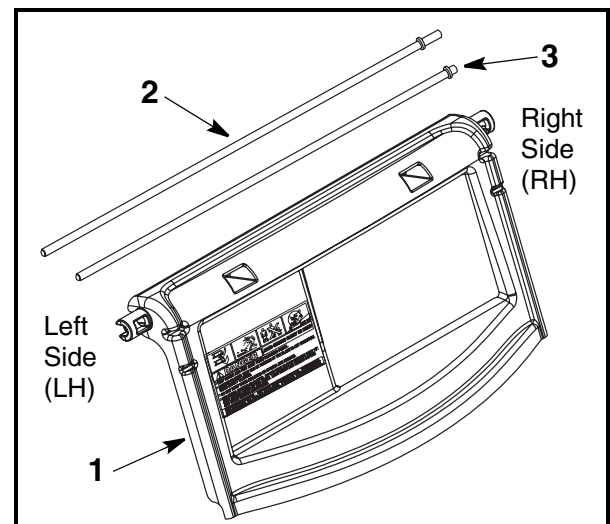


FIGURE 1

Pre-Service Preparation:

1. Place mower on a flat and level surface.
2. Turn off the engine, remove the ignition key (if so equipped).
3. Allow engine and muffler to cool before proceeding.
4. Remove the spark plug wire from the spark plug and ground to the engine block.
5. Drain the fuel tank. Ensure that the oil dipstick cap is tight.

Rear Door Removal Procedure:

6. Refer to Figure 2. Using two flat blade screw drivers, unhook the left and right side rear door torsion spring leg from their handle bracket slot.



FIGURE 2

7. Raise the rear of the unit until the wheels are off the ground. Place wood blocking under both sides of the deck just forward of the rear wheels.
8. If so equipped - Remove the hub cap from the right rear wheel.
9. Using a 9/16" socket and ratchet, remove the hex nut securing the right rear wheel to the height adjuster axle. Remove the right rear wheel.
10. **High Wheel Units Only** - Using a 3/8" socket and ratchet or 3/8" box/open end wrench, remove the 1/4"-20 hex screws securing each end of the pivot rod to the handle brackets. See Figure 3.

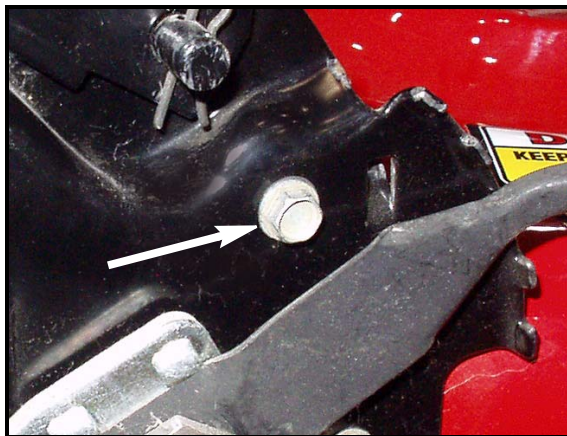


FIGURE 3

11. Set the mower on its' side so that the air filter is up towards the sky.

NOTE: The rear baffle may be of a different configuration and mounting then that shown in the next step. Some hardware may require a Torx T30 bit.

12. The right side handle bracket mounting hardware may be covered by a baffle. If so equipped, locate and remove the screws that secure the rear baffle to the deck and remove and retain the baffle. See Figure 4.



FIGURE 4

13. Handle bracket mounting hardware varies. Select the appropriate socket(s) and ratchet and/or box wrench for the existing hardware.

14. Remove the handle bracket mounting hardware and handle bracket. Discard the old rear door, spacers and pivot rod. Retain the LH and RH torsion springs.

15. **High Wheel Units Only** - The pivot rod mounting hole in the left and right handle bracket will need to be opened up to accommodate the new pivot rod. Using a .332 (Q) or .339 (R) (optional 11/32"/.3437") drill bit and portable drill, open the 1/4" diameter hole in each handle bracket. Remove any metal burrs from around the holes on both sides of the brackets.

Installing the New Rear Door:

16. If the mower's rear wheels are 12" or greater (high wheel) in diameter, use the 747-04588 (Item 3) shorter pivot rod.

If the mower's rear wheels are 8" (low wheel) in diameter, use the 747-04587 (Item 2) longer pivot rod.

17. Position the new Rear Door, Item 1, in front of you with the safety label on the back of the door facing you.

18. Insert the appropriate new pivot rod (see Step 16 above) into the new Rear Door, Item 1, from the right hand (RH) side with the coldhead upset on the right hand side. See Figure 5.

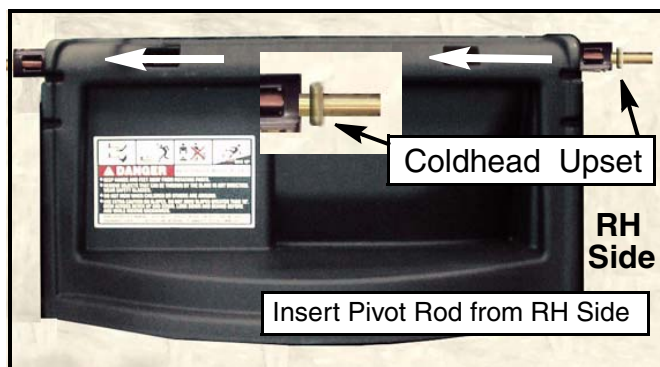


FIGURE 5

19. Install the RH and LH torsion springs onto their respective rear door spring posts. The straight leg of the torsion spring sets into the rear door's notch. See Figure 6.



FIGURE 6

20. Install the LH end of the pivot rod extending from the rear door subassembly into the enlarged hole in the LH handle bracket.

21. Re-install the RH handle bracket onto the deck ensuring that the RH end of the pivot rod is inserted into the enlarged handle bracket hole.
22. Install the mounting hardware removed in Step 13. Tighten securely.
23. Re-install the baffle removed in Step 12 (if so equipped) to the underside of the deck.
24. Re-install the right rear wheel onto the RH handle bracket axle with the hardware removed in Step 9.
25. if so equipped, re-install the hub cap onto the wheel.
26. Return the mower to its normal position.
27. Using a pair of long nose pliers or other suitable tool, set the hook end of each torsion spring onto the handle bracket's tab.
28. **Test the operation of the rear door.** The torsion springs must operate to always force the rear door down and hold the rear door against the rear of the deck tightly. If the door binds or does not have good force to hold the door against the deck locate the problem and repair as necessary.
29. Refuel the fuel tank and reconnect the spark plug wire to the spark plug.

This completes the installation of this service kit.