



# Service Kit 753-06158

Date: July 28, 2009

Subject: 50" and 54" Rear Bagger Adapter  
Chute Front Deck Extension Plate

Models Affected: 19A40002000, 19A40002OEM,  
19A40002100, 19A40007100,  
19A40009100, 19A70008OEM and  
19A70008100

**Read through and understand these instructions completely before proceeding with repair.**

**PURPOSE:** This kit provides a front deck extension plate and molding strip to enhance the bagger's lower chute interface with the cutting deck's discharge opening.

**NOTE:** These materials are prepared for use by trained technicians who are experienced in the service and repair of equipment of the kind described in this publication, and are not intended for use by untrained or inexperienced individuals. Such individuals should seek the assistance of an authorized service technician or dealer.

**NOTE:** *Save this Instruction Sheet. Refer to it when ordering replacement parts.*

## Service Kit Contents

(See Figure 1)

ITEM NO.	PART NUMBER	QTY	DESCRIPTION
1	783-06579	1	PLATE:DISCHARGE CHUTE:FRONT:50/54
2	723-3061-4	1	SEAL: BAFFLE: 4.0 INCH LG
3	*	1	THIS INSTRUCTION SHEET

\* - Not Available Separately

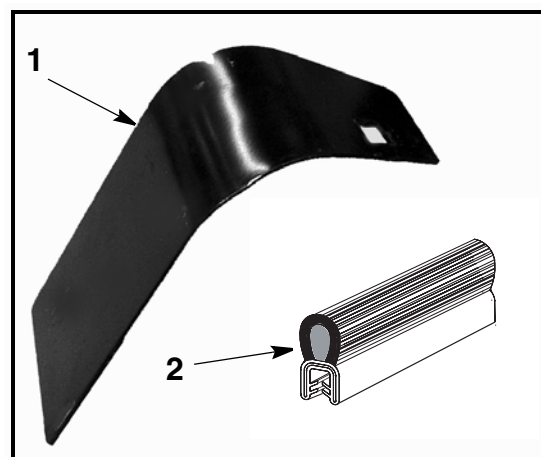


FIGURE 1

### Pre-Service Preparation:

1. Place rider on a flat and level surface, turn off engine remove the ignition key and set the parking brake ON. Allow muffler and engine to cool before proceeding.

2. Raise the cutting deck to its' highest cutting height.

### Installation Instructions:

#### Bagger Accessory Is Not Installed...

3. Follow the directions contained in the bagger accessory operator's manual for the installation of the bagger accessory. When at the section **Installing the Chute Discharge Plate**, add the Front Discharge Chute Plate, Item 1, per Steps 7 and 8 below.

4. Continue with the **Attaching Chute Stop Bracket** and **Installing the Discharge Chute** as instructed in the bagger accessory operator's manual.

#### Bagger Accessory is Already Installed...

5. Remove the bagger's elbow chute assembly from the deck's discharge opening.

6. Using a 9/16" socket and ratchet, remove the front carriage bolt and locking nut securing the discharge chute bracket and chute extension plate to the top of the deck. See Figure 2.

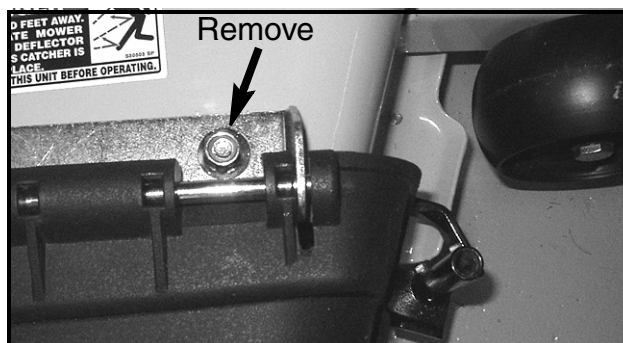
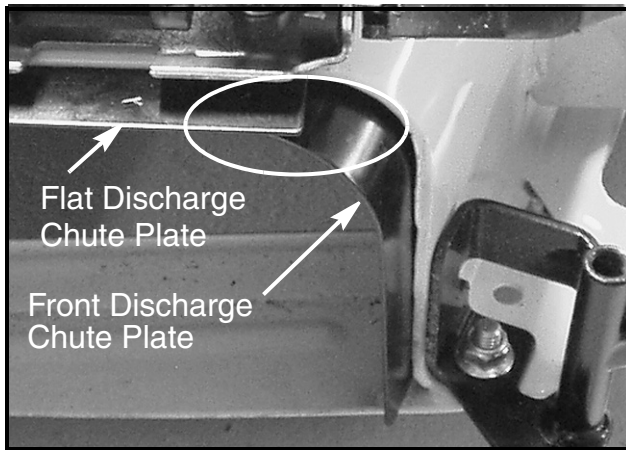


FIGURE 2

7. Insert the Front Discharge Chute Plate, Item 1, into the deck opening. Ensure that the top of the front discharge chute plate is positioned under the flat discharge chute plate. See Figure 3.

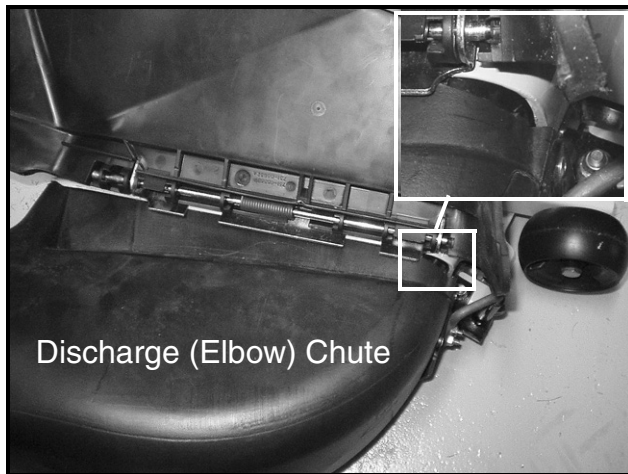


**FIGURE 3**

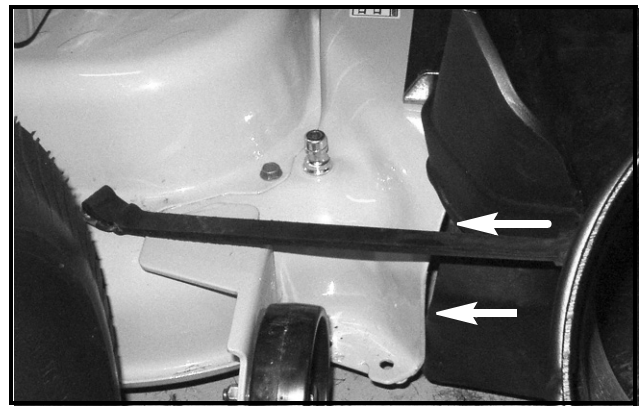
8. Secure the two plates to the deck and discharge chute bracket with the carriage bolt and flange lock nut removed in Step 6. Tighten hardware securely.

**Bagger Discharge (Elbow) Chute Installed:**

9. Figures 4 and 5 show the discharge (elbow) chute installed onto the deck.



**FIGURE 4**



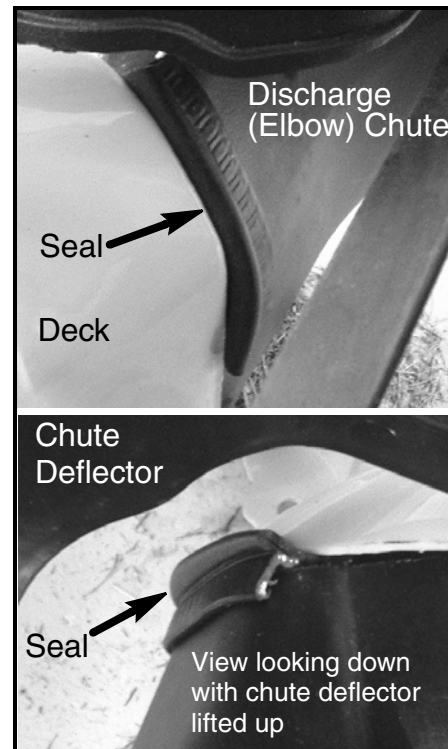
**FIGURE 5**

10. A length of slip-on seal is provided, Item 2, that may be used to enhance the fit of the bagger's discharge (elbow) chute to the deck at the upper rear corner, see Figure 5. If required proceed to Step 11.

11. With the elbow chute installed as shown in Figure 5, mark on the discharge (elbow) chute the area that the seal needs to fill.

12. Remove the elbow chute and install the slip-on seal onto the discharge (elbow) chute to cover the area marked in Step 11.

13. Re-install the discharge (elbow) chute and check to ensure that the seal fills the area marked. See Figure 6.



**FIGURE 6**

This completes the installation of this service kit.