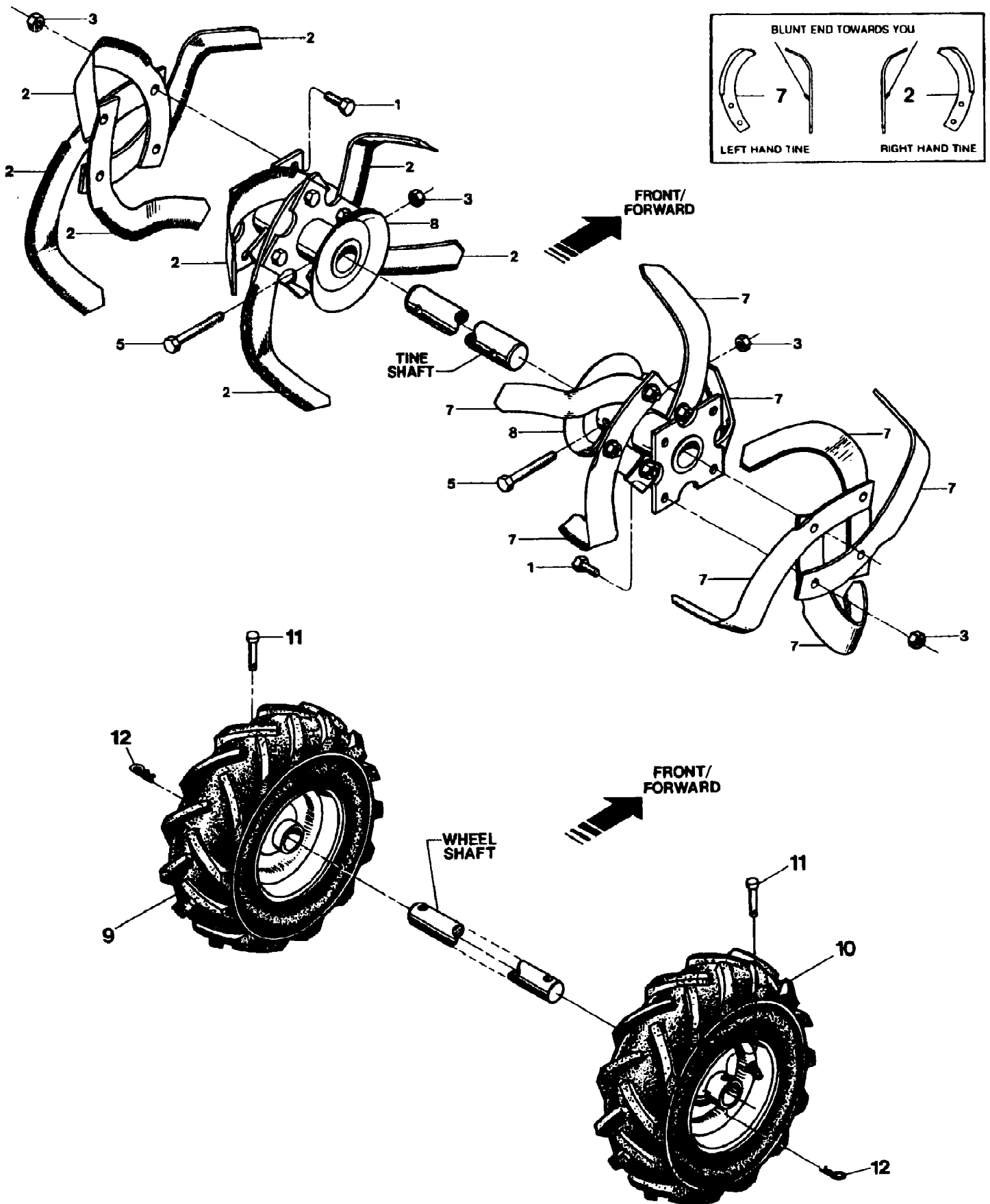


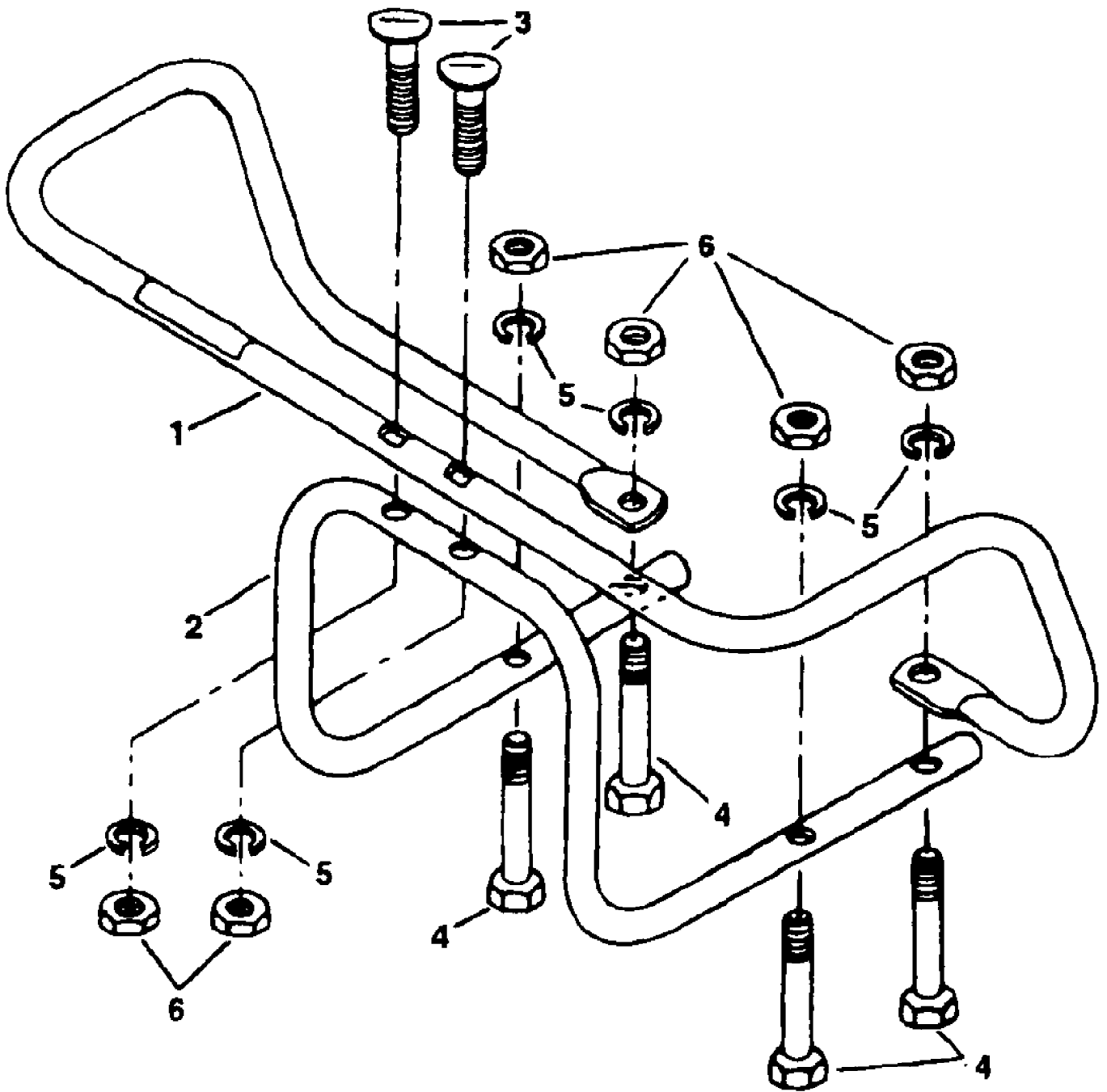
21A-530-081 Pony Tiller 12181 S/N 1100101-119999
Bolo Tines, Wheels, Custom Tilling Tines (Extra Long-Wearing)



21A-530-081 Pony Tiller 12181 S/N 1100101-119999
 Bolo Tines, Wheels, Custom Tilling Tines (Extra Long-Wearing)

Page 2 of 25

Ref #	Part Number	Qty	S/P/F	Description
1	1100043	16	S	Screw-hex hd., 3/8-16 x 1-1/4 (Specify GRADE 5 if ordering part locally)
2	1270-2A	8	S	Bolo Tine-single, right hand tine used on left side of tiller (Incl. two of each Ref. No.'s 1 and 3).
3	1733398	18	S	Hex Locknut, 3/8-16
5	1982612	2	S	Screw-hex hd., 3/8-16 x 2, GRADE 8
7	1270-1A	8	S	Bolo Tine-single, left hand tine used on right side of tiller (Incl. two of each Ref. No.'s 1 and 3).
8	1902154010	2	S	Tine Holder-for bolo tines, left and right sides
	1901118	1	S/F	Replacement set of 16 Bolo Tines
9	2706-01	1	S/F	Wheel & Tire Assy-left side, 4.10 x 6 tire
10	2706-02	1	S	Wheel & Tire Assy-right side (Same specs. as above, Ref. 9)
11	9380	2	S	Clevis Pin -.312 x 1-3/4 long
12	9338	2	S	Hitch Pin
	10802	1	S/F	Custom Tilling Tine Kit
	2475-1	8	S/F	Bolo Tine, custom tilling, left hand
	2475-2	8	S/F	Bolo Tine, custom tilling, right hand

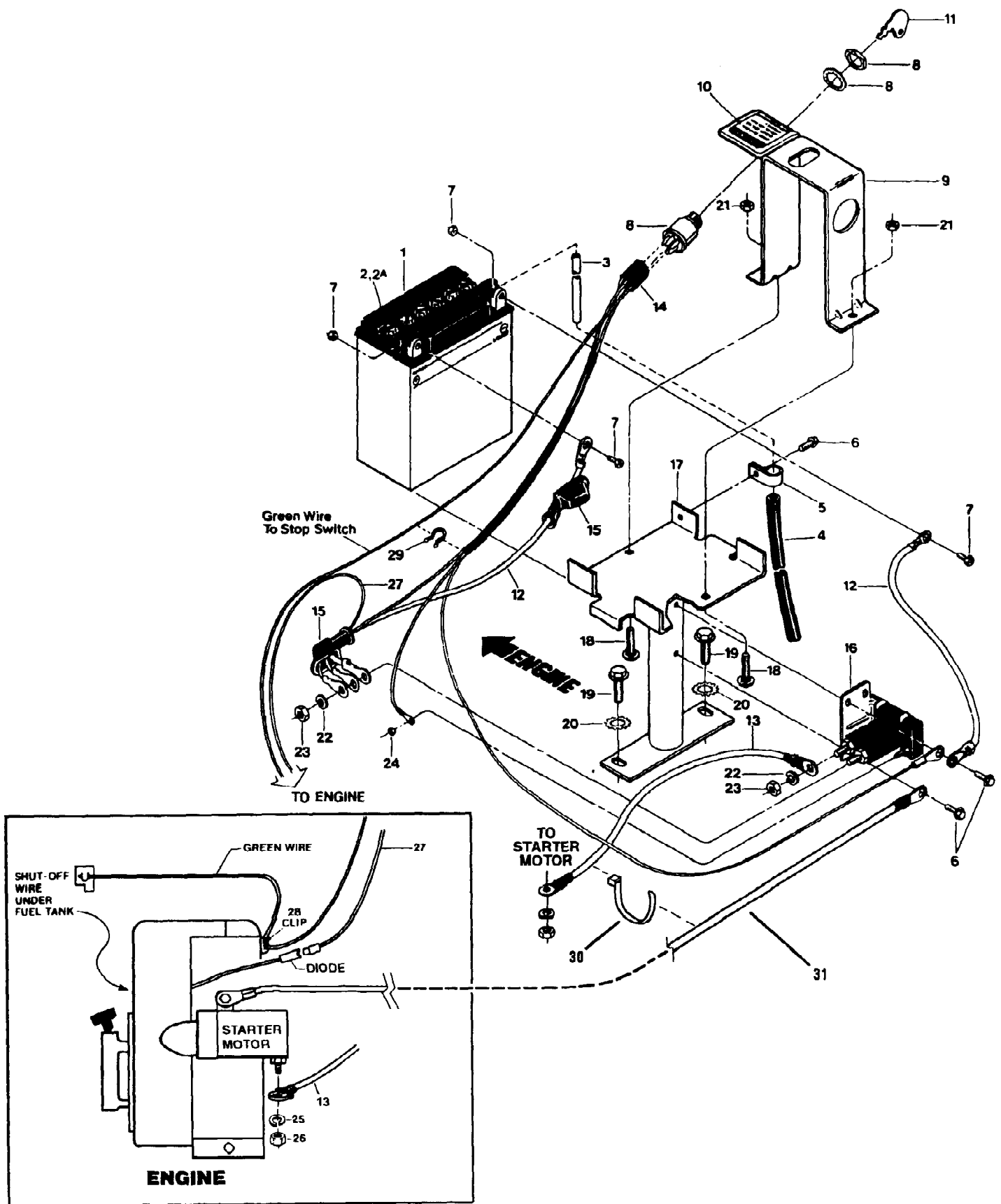


BUMPER ATTACHMENT #12593
(Viewed from front of tiller)

21A-530-081 Pony Tiller 12181 S/N 1100101-119999
Bumper Attachment

Page 4 of 25

Ref #	Part Number	Qty	S/P/F	Description
1		1		UNKNOWN
2		1		UNKNOWN
3		1		UNKNOWN
4		1		UNKNOWN
5		1		UNKNOWN
6		1		UNKNOWN
	12593	1		Bumper Attachment
?19	1904757001	1	S	Bumper-top section
?20	1904758001	1	S	Bumper-bottom section
?21	1731025	2	/P	Bolt-curved head, 5/16-18 x 2 (special bolt) (Also see #1915811 hardware kit)
?22	1111608	4	F	Bolt-hex hd., 5/16-18 x 2-1/2 (Specify GRADE 5 if ordering part locally) (Not avail. separately) (Order #1915811 hardware kit)
?23	1100242	6	S/F	Lockwasher-5/16, (Not avail. separately) (Order #1915811 hardware kit)
?24	1186230	6	S/F	Nut-hex, 5/16-18, (Not avail. separately) (Order 11915811 hardware kit)
	1915811	1	/P/F	Hardware Kit

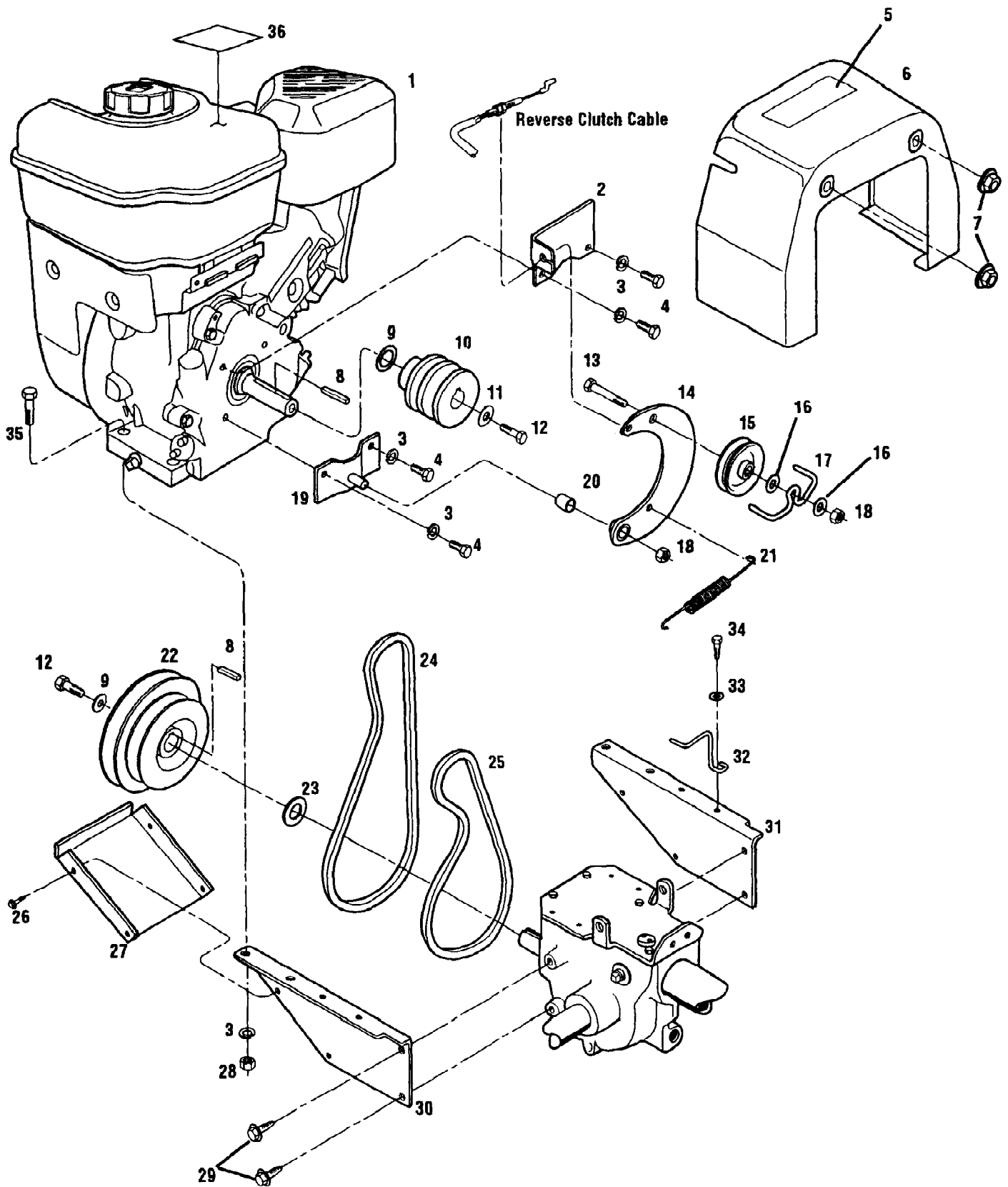


21A-530-081 Pony Tiller 12181 S/N 1100101-119999
Electric Start Assembly

Page 6 of 25

Ref #	Part Number	Qty	S/P/F	Description
1	GW-96512	1	S	Battery-12 volt, 9 ampere (Incl. Ref. No. 7)
2	9462	AR		Cap-battery, yellow replacement cap
2A	9248	AR		Cap-battery, white replacement cap
3	9009	1	S	Vent Tube-battery
4	1475	1		Shield-vent tube (hard plastic)
5	9224	1		Clamp-vent tube shield
6	9552	3	S	Screw-flanged hex hd., self-threading, 1/4-20 x 1/2 (Specify GRADE 5 if ordering part locally.)
7	11361	1		Battery Hdw Kit (Consists of two M6 x 11mm bolts and two M6 nuts (metric bolts and nuts))
8	1908112	1	S/F	Switch, Ignition
9	1904570	1		Battery Hold-Down Clamp (With attached ignition switch mounting plate (Incl. decal, Ref. No. 10))
10	1904548	1	S	Decal-ignition switch instructions
11	96520	1	S	Key-ignition, one pair
12	96509	2		Cable-battery
13	96510	1	S	Cable-solenoid to starter motor
14	1908118	1	S/F	Wire Harness & Connecting Terminal Assy (Available as complete assembly only).
15	97020	2	S	Boot-terminal insulating
16	96514	1	S	Solenoid (Includes nuts and washers for cables and wires)
17	20837	1	S	Bracket-battery
18	1186023	2		Screw-round hd., square neck, 1/4-20 x 1-1/4
19	1186331	2	S	Screw-flanged hex hd., 5/16-18 x 1 (Specify GRADE 5 if ordering part locally.)
20	1177548	2	S	Lockwasher, external tooth
21	1186389	2	/P	Locknut-hex, 1/4-20
22	1100242	2	S	Lockwasher-5/16
23	1186211	2	/P	Nut-hex, 5/16-24
24	9853	1	S	Locknut-hex, #10-32
25		1		Lockwasher-#10 (Not available from factory)
26		1		Nut-hex, #10-24 (Not available from factory)
27	1901894	1	/P	Wire Assembly-recharging
28	9218	1	S	Clip-holds recharging line
29	9265	1	S	Tie - plastic, wire retaining
30	9202	1	S	Tie - plastic, wire retaining
31	1901202	1	/P	Cable - ground wire to starter motor bracket

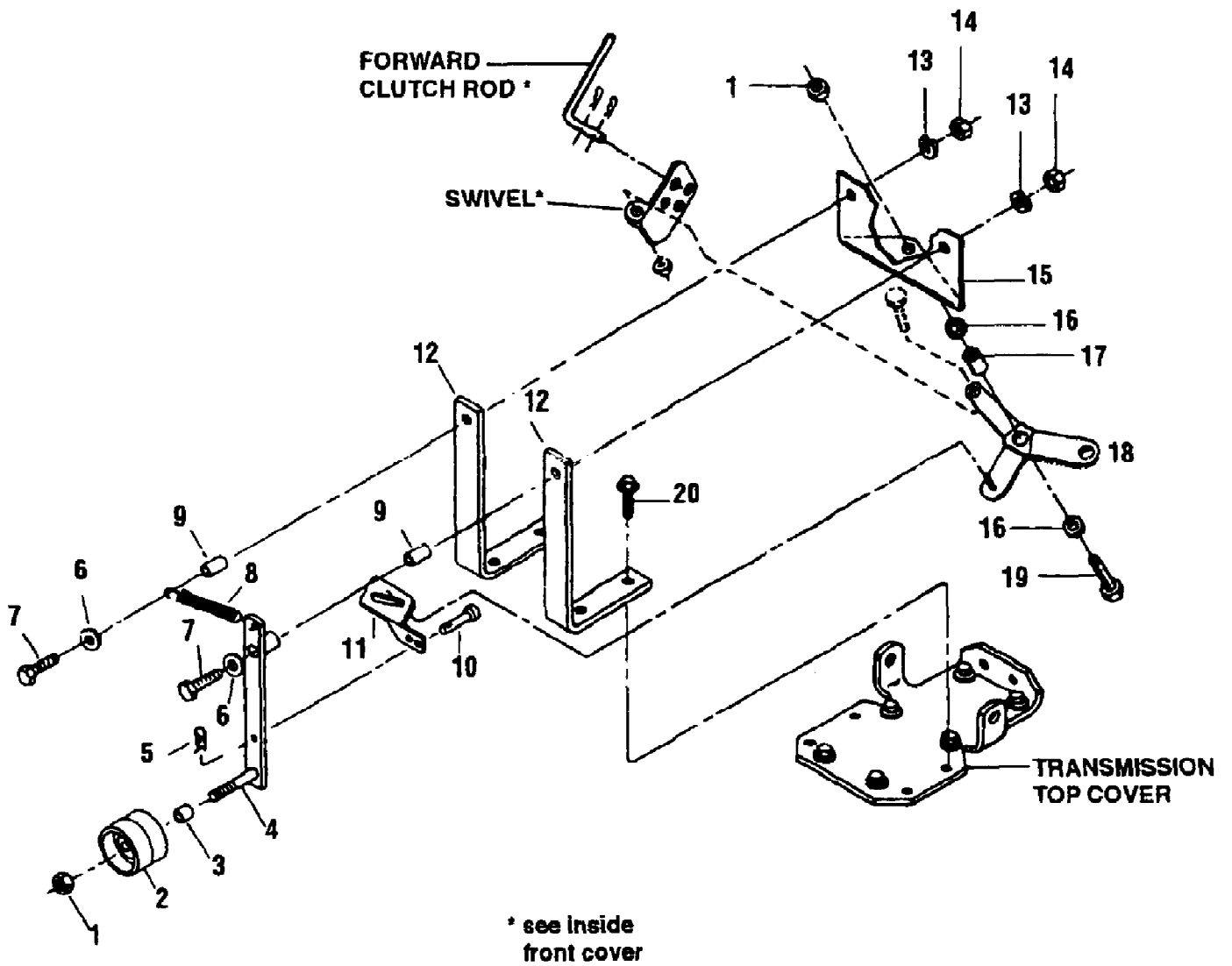
21A-530-081 Pony Tiller 12181 S/N 1100101-119999
Engine, Support Brackets, Pulleys, Belts & Belt Cover



21A-530-081 Pony Tiller 12181 S/N 1100101-119999
Engine, Support Brackets, Pulleys, Belts & Belt Cover

Page 8 of 25

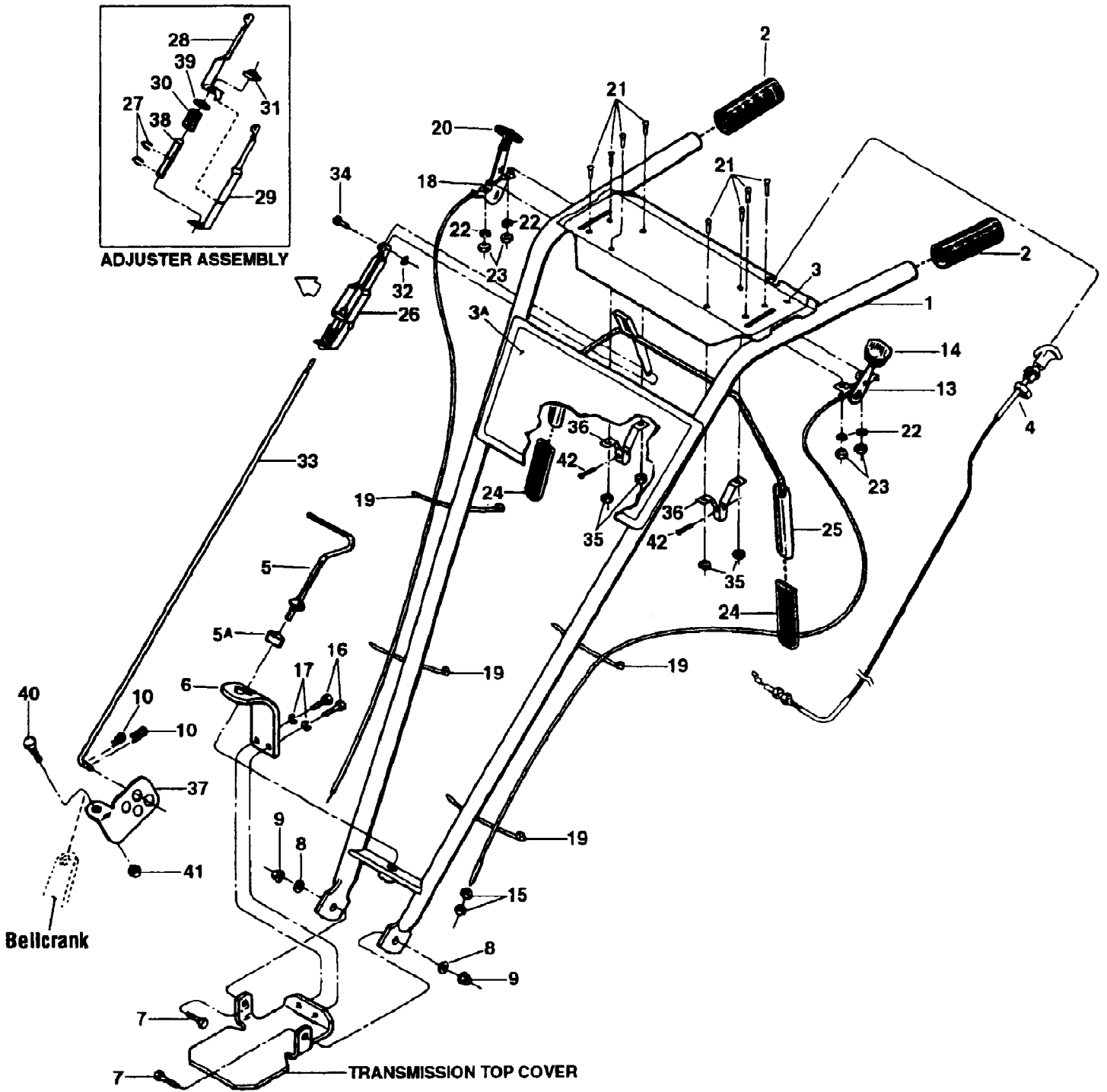
Ref #	Part Number	Qty	S/P/F	Description
1		1		Engine - 6HP, standard recoil start See your local authorized engine service dealer for engine parts or service. Refer to engine nameplate for engine type and code information.
2	1916633001	1		Bracket, Clutch Cable
3	1100242	8	S	Lockwasher - 5/16
4	1111696	4		Screw-hex hd., 5/16-24 x 1/2
5	1904557	1		Decal-Hot surfaces/belt warning
6	1917139	1	S	Cover (Incl. Ref. No. 5)
7	1186391	2	S	Nut-5/16-18, Flange Lock
8	1108841	2	S	Key-3/16 x 1-1/2
9	9944	1	S	Washer-Disc Spring
10	1916520	1	S	Pulley, Engine Drive
11	9944	2	S	Washer, Belleville
12	9572	2	S	Screw-hex hd., 5/16-24 x 1-1/8
13	1111606	1		Screw-hex hd., 5/16-18 x 2
14	1916578001	1		Reverse Idler Arm
15	1916535	1	/P	Pulley, Reverse Idler
16	1107382	2	/P	Washer, Flat, 5/16
17	1916725	1	S	Belt Guide
18	1110107	1	S	Locknut, 5/16-18
19	1916559001	1		Bracket, Reverse Idler
20	1916536	1		Bushing
21	1916724	1	/P	Spring, Reverse Return
22	1916522	1	S	Pulley, Transmission
23	1440	1	S	Support Washer
24	1916753	1	S	Reverse Drive Belt
25	1909404	1	/P	Forward Drive Belt
26	1900396	4	/P	Screw-hex hd., #10-32 x 1/2, self-tapping
27	1916189001	1	S	Guard, Belts/Pulleys
28	1186230	4	S	Hex Nut, 5/16-18
29	1186329	4	S	Screw-flanged hex hd., 5/16-18 x 3/4 (Specify GRADE 5 if ordering part locally.)
30	1916797001	1	/P	Support Bracket-engine, left side
31	1916796001	1	S	Support Bracket-engine, right side
32	1916736	1	S	Belt Guide
33	1107381	1	S	Washer-flat, 1/4
34	9573	1	S	Screw-hex hd., self-tapping, 1/4-20 x 3/4 (Specify GRADE 5 if ordering part locally.)
35	1100799	4	S	Screw-hex hd., 5/16-18 x 1-1/2
36	1915810	1		Decal-Stabilization



21A-530-081 Pony Tiller 12181 S/N 1100101-119999
Forward Idler Assembly

Page 10 of 25

Ref #	Part Number	Qty	S/P/F	Description
1	1110108	2	S	Locknut-hex, 3/8-16
2	9090	1	S	Pulley-idler, forward tiller
3	20532	1	S	Spacer
4	20899	1	S	Idler Arm-left, forward tiller direction
5	9338	1	S	Hairpin Cotter
6	20545	1	S	Washer-plain, 5/16
7	1111607	2	S	Screw-hex hd., 5/16-18 x 2-1/4 (Specify GRADE 5 if ordering part locally)
8	1492	1	S	Spring
9	9479	2	S	Pivot Bushing
10	9340	1		Pin
11	20517-01	1		Forward Link
12	20751	2		Mounting Bar
13	1100242	2	S	Lockwasher-5/16
14	1186230	2	S	Nut-hex, 5/16-18
15	20842	1	S	Shifting Base
16	20553	2	S	Spacer-Bushing
17	20532	1	S	Bushing-bellcrank
18	20838	1	S	Bellcrank
19	1100043	1	S	Screw-hex hd., 3/8-16 x 1-1/4 (Specify GRADE 5 if ordering part locally)
20	1186331	1	S	Screw-flanged hex hd., 5/16-18 x 1



Ref #	Part Number	Qty	S/P/F	Description
1	1917140	1		Handlebars (Incl. Ref. No.'s 2, 3 and 3A)
2	9126	2	S	Grip-handlebars
3	1916933	1		Decal-for operator control panel
3A	20924	1	S	Decal-Troy-Bilt Pony (model name, logo)
4	1916784	1	S	Reverse Clutch Control Cable
5	20703	1		Handle, Height Adjustment
5A	9955	1	S	Washer-keyed
6	1900475001	1	S	Bracket-handlebar height adjust
7	1100046	2	S	Screw-hex hd., 3/8-16 x 1 (Specify GRADE 5 if ordering part locally.)
8	9904	2	S	Washer-plain (flat) 3/8, S.A.E
9	9837	2	S	Locknut-hex, 3/8-16
10	9338	2	S	Hair Pin Cotter
13	9442	1	S	Wheel Gear Control & Cable Assy. (Incl. Ref. No.'s 14, 15, 19 and 21-23)
14	9057	1	S	Knob-wheel gear control lever
15	1186211	2	/P	Nut-hex, 5/16-24, wheel gear cable adjustment
16	1100068	2	S	Screw-hex hd., 3/8-16 x 3/4 (Specify GRADE 5 if ordering part locally.)
17	1100243	2	S	Lockwasher-3/8
18	1916900	2		Engine Throttle Control & Cable
19	1735531	4	S	Ties-plastic
20	9212	1	S	Knob-throttle control lever
21	1114748	8	/P	Screw-round hd, No. 10-32 x 1/2
22	1100240	4	/P	Lockwasher-No. 10
23	1186208	4	/P	Nut-hex, No. 10-32
24	9390	2	S	Grip-paddle
25	20863	1	S	Bail-forward clutch control (Incl. two Grips, Ref. No. 24)
26	20862	1	S	Adjuster Assembly (Incl. Ref. No.'s 27-30, 38 and 39)
27	9532	2	S	Klip Ring
28	20808	1	S	Adjuster, Right Side
29	20809	1	S	Adjuster, Left Side
30	9059	1	S	Spring-Adjuster
31	9522	1		Nut-rectangular
32	9386	1		Klip Ring
33	20831	1	S	Rod-forward clutch
34	97083	1		Pin-Clevis
35	9853	4	S	Sems Nut
36	20806	2	S	Bracket-bail support
37	20888	1	S	Swivel
38	9432	1		Bushing
39	9973	1		Washer
40	1100805	1	S	Screw-hex hd., 1/4-20 x 3/4 (Specify GRADE 5 if ordering part locally.)
41	9811	1		Nut-1/4-20

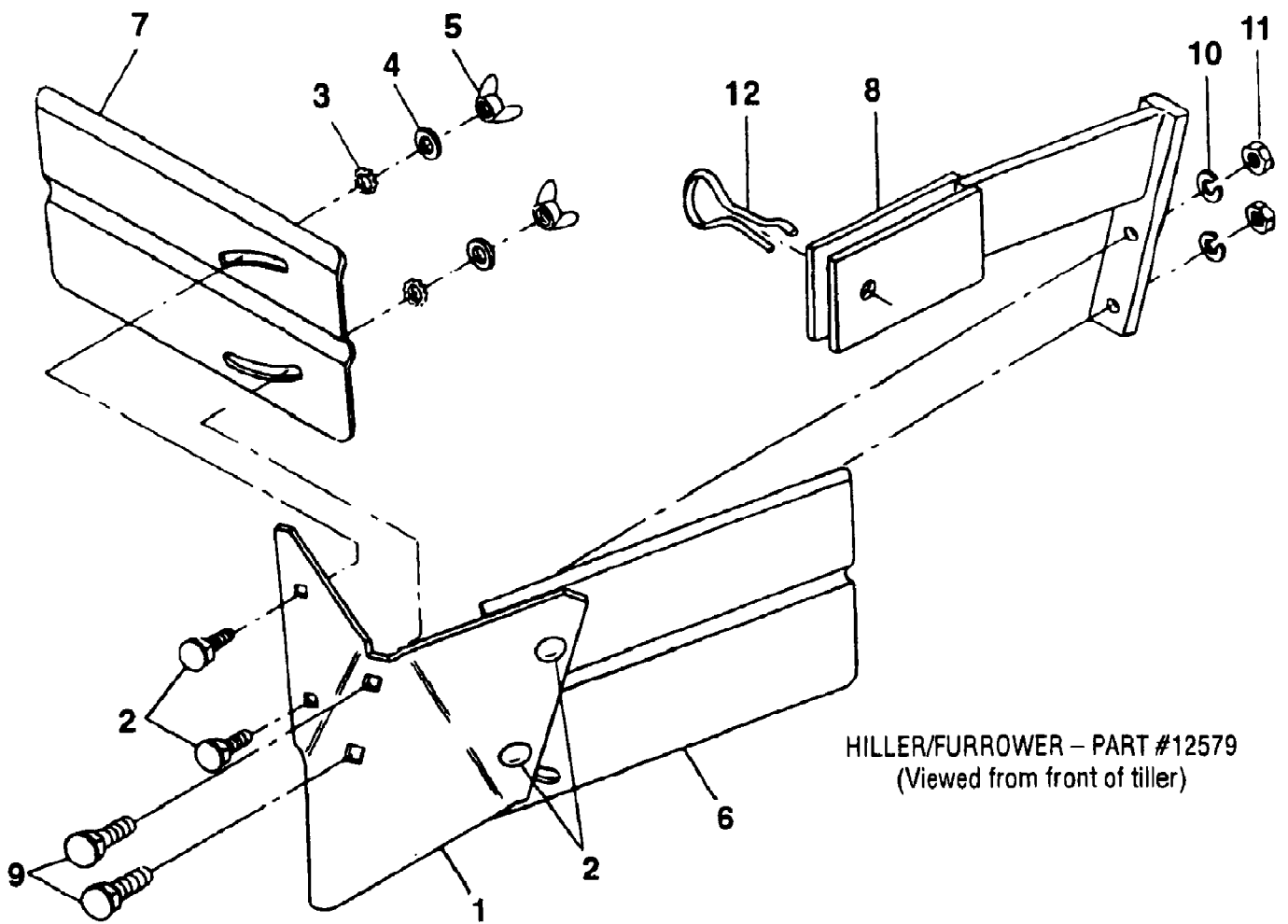
21A-530-081 Pony Tiller 12181 S/N 1100101-119999
Handlebar Assembly & Control Levers

Page 13 of 25

Ref #	Part Number	Qty	S/P/F	Description
42	9552	2	S	Screw-flanged hex hd, self-tapping, 1/4-20 x 1/2 (Specify GRADE 5 if ordering part locally.)

21A-530-081 Pony Tiller 12181 S/N 1100101-119999
Hiller/Furrower Attachment

Page 14 of 25

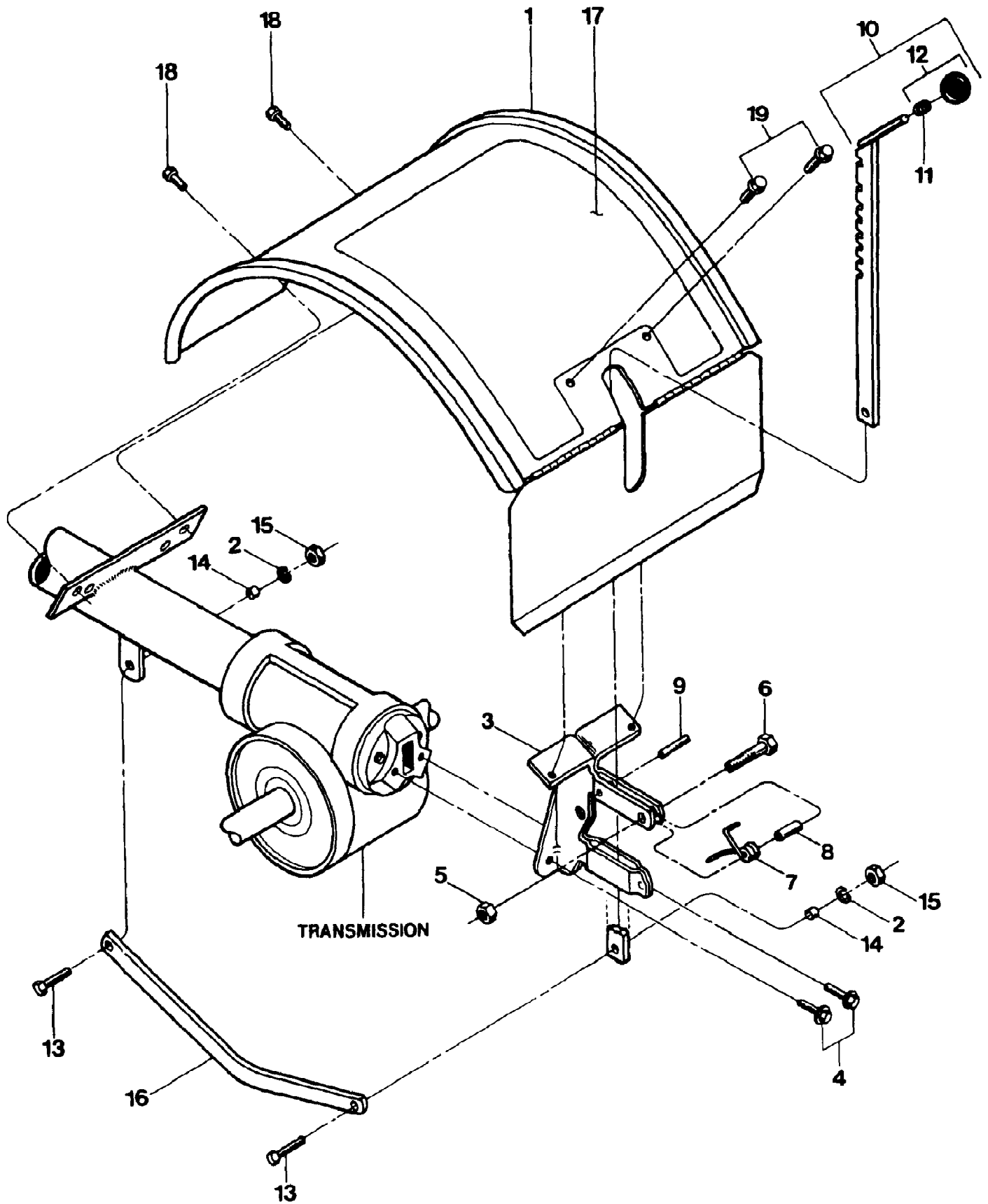


21A-530-081 Pony Tiller 12181 S/N 1100101-119999
Hiller/Furrower Attachment

Page 15 of 25

Ref #	Part Number	Qty	S/P/F	Description
1	1900771001	1	/P	Furrower-blade only
2	1186098	4	/P	Carriage Bolt-5/16-18 x 3/4
3	1177548	4	S	Star Washer-external tooth, 5/16
4	9902	4		Plain Washer-5/16 S.A.E.
5	9824	4	S	Wing Nut-5/16-18
6	1900773001	1	/P	Hiller Wing - left
7	1900774001	1	/P	Hiller Wing - right
8	1900772001	1	S	Bracket-blade mounting
9	9725	2	S	Carriage Bolt-blade mounting, 3/8-16 x 1-1/2
10	1100243	2	S	Lockwasher-3/8, plated
11	1186231	2	S	Nut-hex, 3/8-16, plated
12	9318	1	S	Pin-clinch
	12579	1	F	Hiller/Furrower-complete attachment

21A-530-081 Pony Tiller 12181 S/N 1100101-119999
Hood, Bracket & Depth Regulator



21A-530-081 Pony Tiller 12181 S/N 1100101-119999
Hood, Bracket & Depth Regulator

Page 17 of 25

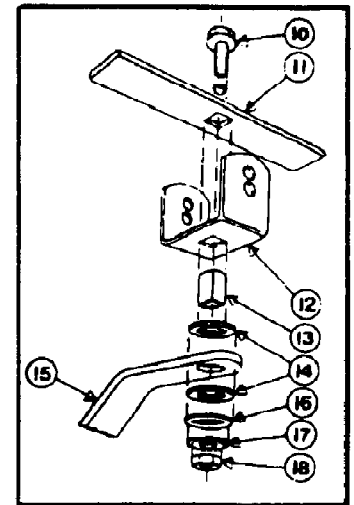
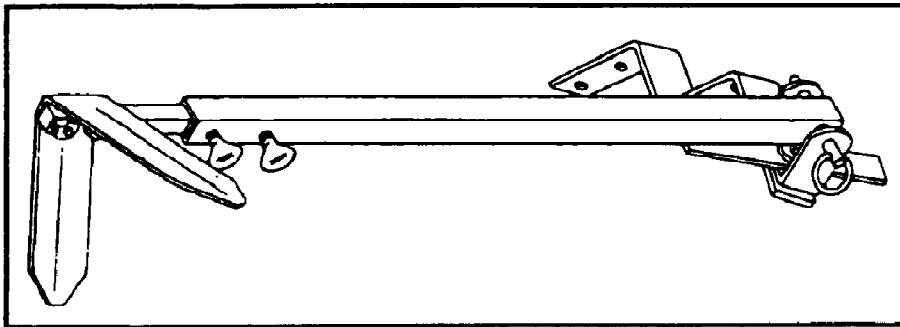
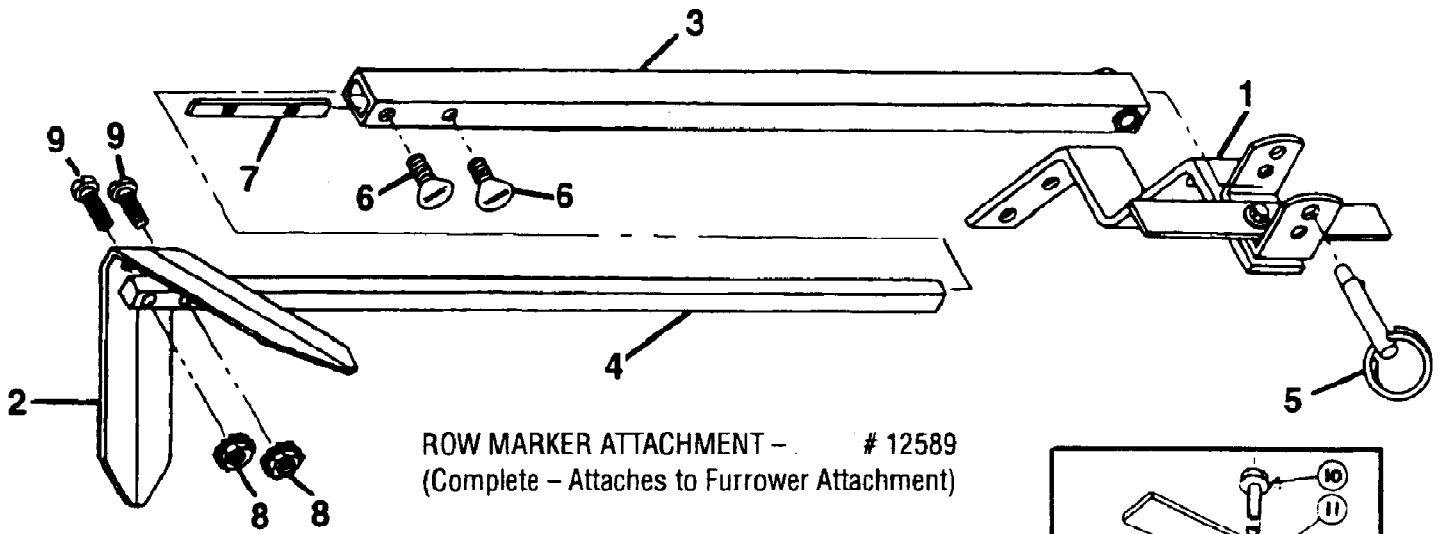
Ref #	Part Number	Qty	S/P/F	Description
1	1917142	1	/P	Hood-tine cover, with hinged flap (Incl. Ref. No. 17)
2	1100243	2	S	Lockwasher-3/8
3	2527	1	S	Bracket-hood & depth regulator (Incl. Ref. No. 9)
4	90038	2		Screw-flanged hex hd., 5/16-18 x 5/8 (Specify Grade 5 if ordering locally.)
5	9811	1		Locknut-hex, 1/4-20
6	1100069	1	S	Screw-hex hd., 1/4-20 x 1 (Specify Grade 5 if ordering locally.)
7	9384	1	S	Spring-depth regulator plunger
8	9438	1		Spacer
9	9308	1	S	Roll Pin-1/4 x 1 (spiral)
10	1117A	1	S	Bar Assembly-depth adjustment (Incl. Ref. No's. 11 and 12)
11	9120	1	S	Ring-retaining, tolerance ring
12	9119	1	S	Knob-depth regulator (Incl. Ref. No. 11)
13	1100043	2	S	Screw-hex hd, 3/8-16 x 1-1/4 (Specify Grade 5 if ordering locally.)
14	1113-1	2	S	Bushing-spacer, drag bar
15	1186231	2	S	Nut-hex, 3/8-16
16	20775	1	S	Drag Bar-depth regulator
17	1916934	1		Decal-tiller operating instructions
18	9553	2	S	Screw-hex hd, self-tapping, 5/16-18 x 1/2 (Specify Grade 5 if ordering locally.)
19	9552	2	S	Screw-flanged hex hd, self-tapping, 1/4-20 x 1/2 (Specify Grade 5 if ordering locally.)

21A-530-081 Pony Tiller 12181 S/N 1100101-119999
Main Drive Shaft, Input Pinion Shaft & Gear Assemblies

Page 19 of 25

Ref #	Part Number	Qty	S/P/F	Description
1	1714	1	S	Bearing-tapered roller with race
2	20718	1	S	Gear-spur, main drive shaft
3	9301	1	S	Key-3/16 sq. x 1
4	GW-11603	1	F	Drive Shaft
5	1224-1	AR	S/F	Shim-rear bearing cap, .010 thick
	1224-2	AR	S/F	Shim-same as above, but .030 thick
	1224-3	AR	S/F	Shim-same as above, but .005 thick
	1325C	AR	S	Shim Set (Includes the following shims: two 1224-1; two 1224-2; one #1224-3)
6	9572	1	S	Screw-hex hd., 5/16-24 x 1-1/8 (Specify GRADE 5 if ordering part locally.)
7	9944	1	S	Washer-disc spring (Concave surface faces pulley)
8	1108841	1	S	Key-3/16 sq. x 1-1/2
9	20880	1		Pulley-transmission drive
10	1440	1	S	Washer-support
11	85030	1		Oil Seal-input pinion shaft, front.
12	9500	1	S	Ring-retaining (snap ring), external
13	9953	2	S	Washer-thrust
14	9428	1	S	Bushing
15	9677	1	S	Set Screw-5/16-18 x 3/8 (Specify GRADE 5 if ordering part locally.)
16	20791	1	S	Input Pinion-steel shaft
17	20792	1	S	Gear-input pinion
18	9093	1	S	Retainer-snap ring, external
19	20799	AR	S	Pinion Assy (Incl. one each of Ref. No.'s 16-18)
20	9517	1	S	Retainer-snap ring, internal

21A-530-081 Pony Tiller 12181 S/N 1100101-119999
Row Marker Attachment & Yoke Assembly



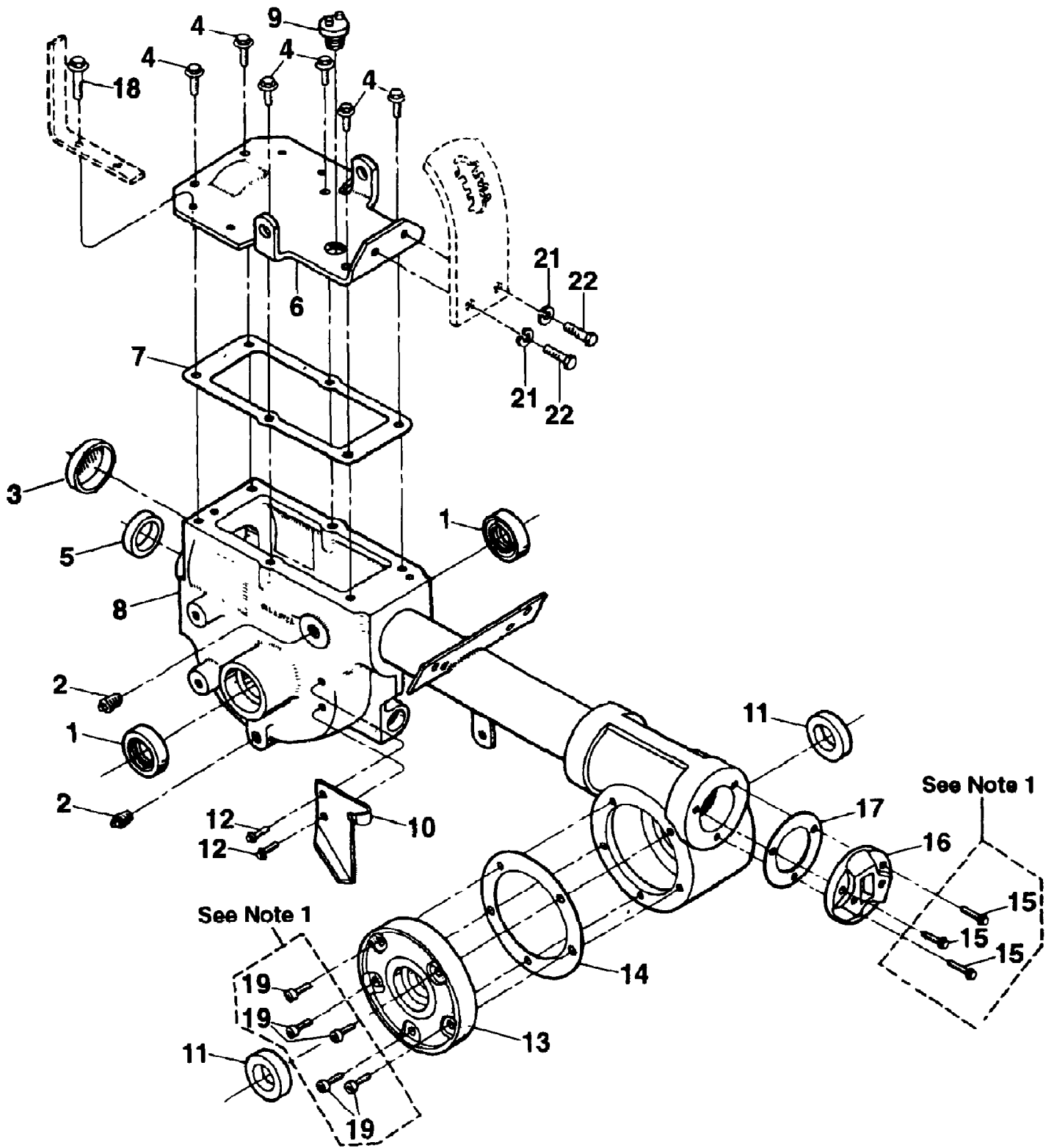
MAIN SUPPORT & YOKE
ASSEMBLY
1904522001

21A-530-081 Pony Tiller 12181 S/N 1100101-119999
Row Marker Attachment & Yoke Assembly

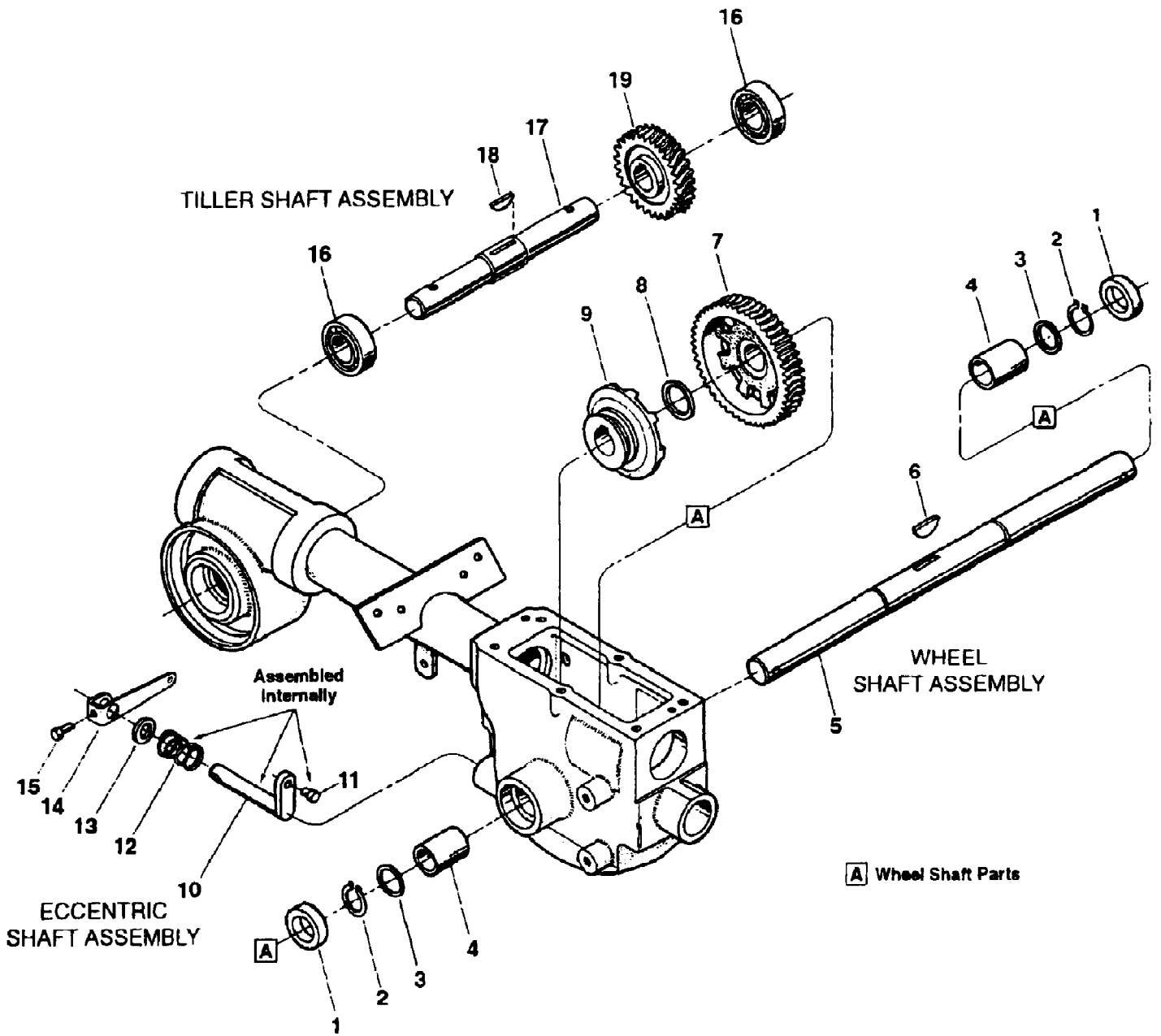
Page 21 of 25

Ref #	Part Number	Qty	S/P/F	Description
	12589	1		Row Marker Attachment
1	1904522001	1		Main Support & Yoke Assy- complete. (Incl. Ref. No.'s 10,11,12,13,14,15,16,17 & 18.)
2	1594	1	S	Marker Blade-blade only
3	1904524001	1		Marker Arm-main arm
4	1904523001	1		Marker Arm-extension arm with stop pin
5	9347	1	S	Hitch Pin (Incl. in Hardware Pkg #1837)
6	9786	2		Thumbscrew - 1/4-20 x 1/2 (Not avail. sep.) (See hardware pkg. #1837)
7	1596	1	S	Nut Bar (Incl. in hardware pkg #1837)
8	9828	2		Nut-hex, 10-24 (W/attached start washers, not avail. sep.)(See hardware pkg #1837)
9	1100135	2	/P	Screw-round hd., 10-24 x 1 (Not avail. sep.)(See hardware pkg #1837)
	1837	1	S/F	Hardware Package
	12582	1	F	Row Marker Attachment & Pony Hiller/Furrower Attachment- complete.
	12589	1	F	Row Marker Attachment - complete
10	1186349	1	/P	Screw- hex flanged locking, 3/8-16 x 1-1/2 (Specify GRADE 5 if ordering part locally)
11	1593	1	S	Stop Bar
12	1592	1	S	Yoke
13	1591	1	S	Tube Key-square
14	1590	2	S	Washer-friction
15	1588	1	S	Main Support
16	1589	1	S	Washer-square hole
17	9925	1		Washer-disc spring
18	1186231	1	S	Nut-hex 3/8-16

21A-530-081 Pony Tiller 12181 S/N 1100101-119999
Transmission Housing, Covers, Seals, Gasket & Plugs



Ref #	Part Number	Qty	S/P/F	Description
1	9621	2	S	Oil Seal-double lip, wheel shaft, right and left sides
2	9726	2	S	Plug-pipe, 1/4, oil level hole and gear oil drain hole
3	97076	1	S	Seal-transmission bore
4	1186329	6	S	Screw-flanged hex hd., 5/16-18 x 3/4 (Specify GRADE 5 if ordering part locally.)
5	85030	1		Oil Seal-input pinion shaft
6	11513	1		Cover-top of transmission (Incl. four of Ref. No. 18 and two of each of Ref. No.'s 21 and 22)
7	20694	1	S	Gasket-transmission top cover
8	1916197001	1	S	Transmission case, tube and rear housing assembly
9	9467	1	S	Plug-gear oil fill hole
10	1916198001	1	/P	Plate-wheel drive cable mounting
11	97073	2	S	Oil Seal-tiller shaft, left and right sides
12	90038	2		Screw-flanged hex hd., 5/16-18 x 5/8 (Specify GRADE 5 if ordering part locally.)
13	1916273001	1	S	Cover-tiller housing, left side
14	1129-1	AR	S	Gasket-tiller housing cover, .010 (fits all covers)
15	1915089	AR	/P/F	Screw Kit (Includes three (3) 1/4-20 x 7/8 self-sealing screws)
16	1115	1		Cap-rear bearing
17	1124-2	AR	S	Gasket-rear bearing cap, .010 thick
18	1186331	4	S	Screw-flanged hex hd., 5/16-18 x 1 (Specify GRADE 5 if ordering part locally.)
19	1915087	AR	/P/F	Screw Kit (Includes five (5) 1/4-20 x 5/8 self-sealing screws)
21	1100243	2	S	Lockwasher-3/8
22	1100068	2	S	Screw-hex hd., 3/8-16 x 3/4 (Specify GRADE 5 if ordering part locally.)



21A-530-081 Pony Tiller 12181 S/N 1100101-119999
Wheel Shaft, Eccentric Shaft & Tiller Shaft Assemblies

Page 25 of 25

Ref #	Part Number	Qty	S/P/F	Description
1	9621	2	S	Oil Seal-left and right sides
2	9511	2	S	Ring-retaining, heavy-duty, external
3	1166-1	AR	S	Shim-1-1/64 I.D, .062 thick
	1166-2	AR	S	Shim-as above, but .030 thick
	1166-3	AR	S	Shim-as above, but .015 thick
	1166-4	AR	S	Shim-as above, but .010 thick
4	1086	2	S	Bushing
5	2494	1	S	Wheel Shaft (axle) (Incl. Ref. No. 6)
6	9373	1	S	Key-hi-pro (1/4 x 1-5/16), clutch to wheel shaft
7	20914	1	S	Gear-wheel drive (worm gear), cast iron
8	9935	1	S	Shim-between key and gear (1.016 I.D. x 1.468 O.D. x .062 thick)
9	20712	1	S	Clutch-wheel drive, cast iron
10	20879	1	S	Eccentric Shaft-wheel clutch shifting
11	1442	1	S	Pin-eccentric shaft
12	9055	1	S	Spring
13	9622	1	S	Oil Seal-eccentric shaft
14	20757	1		Lever-eccentric shaft
15	11000804	1		Screw-hex hd., 1/4-20 x 1/2 (Specify GRADE 5 if ordering part locally.)
16	97074	2	S	Ball Bearing-for tiller shaft
17	20896	1	S	Tiller Shaft (Incl. Ref. No. 18)
18	1104	1	S	Key-woodruff, 1/4 x 1-1/4 (For tiller shaft/worm gear)
19	20913	1	S	Worm Gear-bronze, tiller drive