



**SERVICE  
BULLETIN  
417  
4 CYCLE**

**ISSUED:** October 11, 2002  
**SUBJECT:** Fuel Line Routing

**Dates Affected:** June 24, 2002 to September 25, 2002  
**Date of Manufacture (DOM):** 02175C - 02268C  
**PLANT CODE:** C

**Models Affected:**

HM100-159249T	HM80-155630V	HMSK110-159967B
HM100-159287T	HM80-155653V	HMSK80-155527W
HM100-159416T	HM80-155657V	HMSK80-155672W
HM100-159452T	HM80-155711V	HMSK80-155699W
HM100-159465T	HM80-155713V	HMSK80-155716W
HM100-159487T	HM85-155853D	HMSK80-155717W
HM100-159491T	HMSK100-159468X	HMSK90-156528E
HM80-155481V	HMSK110-159952B	HMSK90-156538E
HM80-155521V	HMSK110-159953B	HMSK90-156542E
HM80-155603V	HMSK110-159955B	
HM80-155627V	HMSK110-159957B	

Products that have been inspected and/or repaired will already be identified with an "X" on the outside of the box, directly under the product identification label. These units will also have a yellow dot placed on the fuel line directly adjacent to the fuel shut off valve and/or on the fuel line directly next to the carburetor (fig. 6). Either of these marks indicate the unit has been inspected and/or repaired.

Before performing any inspection or repair, locate the engine identification decal as shown in (fig. 1).

- Confirm that the engine is within the affected DOM range and contains plant code "C" see (fig. 1).
- If any questions should arise after reviewing this bulletin, please call 1-888-271-4048.

**FUEL LINE ROUTING, GO/NO-GO GAUGING:**

1. To determine if repair is required, inspect the fuel line routing. A gauge will be used to aid in this determination. To make a gauge use a piece of 1/8" round stock rigid material approximately 12" long. Make sure there are no sharp edges or burrs on the ends of the gauge.
2. The gauge will be used as a go/no-go gauge that can be inserted into the opening (fig. 2) between the muffler and the carburetor heater box down to the fuel line.
3. Using a light that can be focused in a concentrated area (such as a mag light), look between the muffler and the heat shield at the 1/2" O.D. black fuel line, see (fig. 2 & 3).
4. Check for clearance between the recoil housing and the fuel line where the fuel line passes through the blower housing on the carburetor side of the engine. If the gauge fits between the blower housing and the fuel line, the routing of the fuel line is good (fig. 3).

**SERVICE  
BULLETIN  
417  
4 CYCLE**



5. If the gauge does NOT fit between the hose and the housing (fig. 4) refer to rework instructions.
6. If the fuel line routing is deemed good, both the box (if applicable) and engine need to be identified as having been inspected. The fuel line gets marked with yellow paint marker dots as seen in (fig. 6). The product's box must be marked with a large magic marker by placing an "X" directly below the product identification label.
7. If the fuel line is routed properly, file an OPEESA warranty claim form with Tecumseh for 15 minutes labor, **referencing Service Bulletin # 417**. The dealer will be allotted a one time \$35.00 trip charge per retail location. Batch claim filing will be acceptable when performing multiple repairs. If you choose this option, it is **CRITICAL** that you attach a separate page to your claim listing ALL models, specifications and DOM numbers repaired.

**REWORK INSTRUCTIONS:**

1. Remove the carburetor / heater box cover assembly exposing the carburetor and the fuel line.
2. Remove the recoil / blower housing assembly.
3. Replace the fuel line using Part Number 30962. Cut the new fuel line to match the length of the fuel line removed. Install the new fuel line as shown in (fig. 5).
4. Once the fuel line is replaced, the engine can be reassembled.
5. If the fuel line routing is deemed good, both the box (if applicable) and engine need to be identified as having been inspected. The fuel line gets marked with yellow paint marker dots as seen in (fig. 6). The product's box must be marked with a large magic marker by placing an "X" directly below the product identification label.
6. When complete, file an OPEESA warranty claim form with Tecumseh for 30 minutes labor and the Part No. 30962 if it was used. **Reference Service Bulletin # 417** on the warranty claim. The dealer will be allotted a one time \$35.00 trip charge per retail location. Batch claim filing will be acceptable when performing multiple repairs. If you choose this option, it is **CRITICAL** that you attach a separate page to your claim listing ALL models, specifications and DOM numbers repaired.

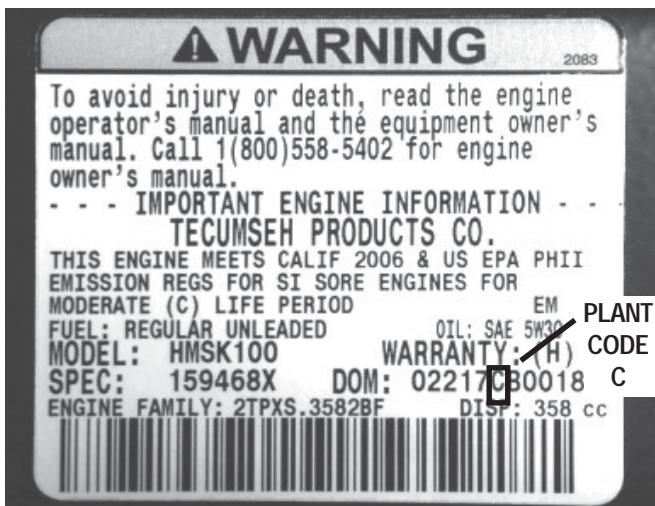


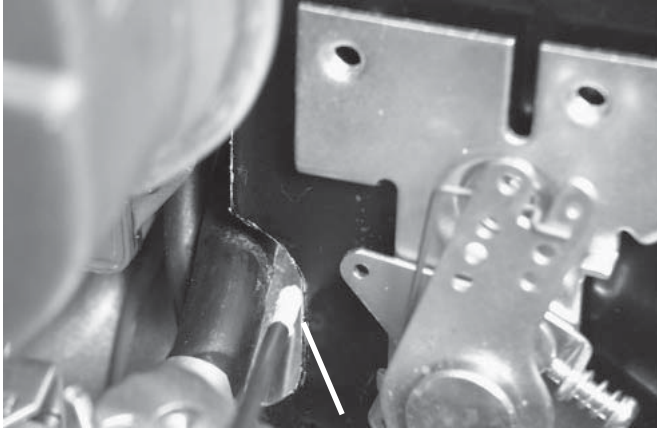
Figure 1



Figure 2

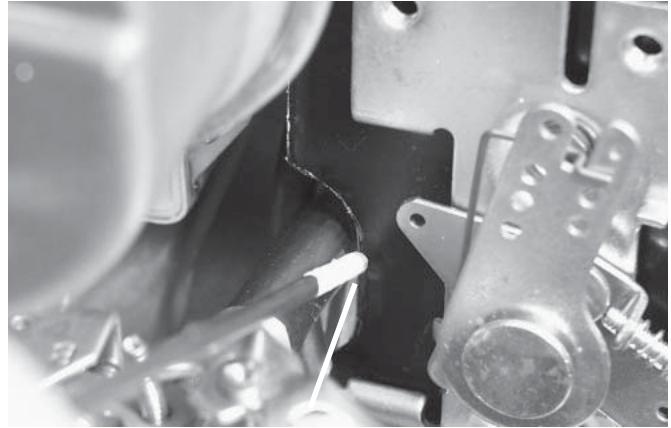


SERVICE  
BULLETIN  
417  
4 CYCLE



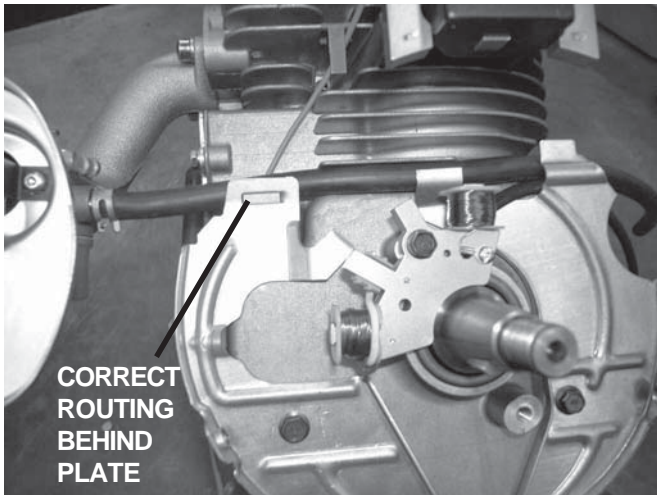
**GOOD**  
(1/8" PLUS CLEARANCE)

Figure 3



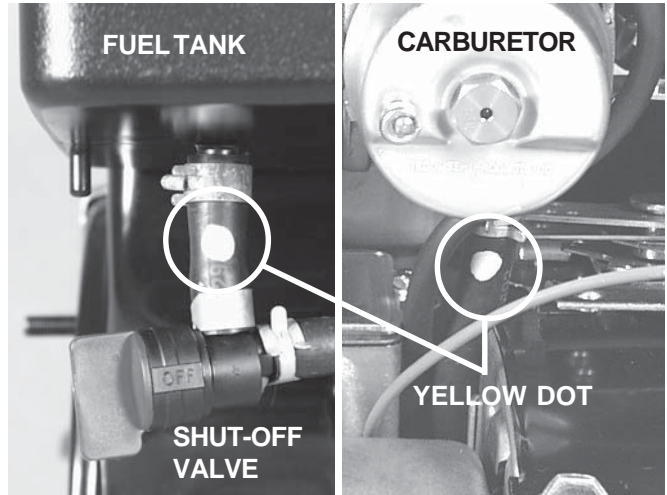
**BAD**  
(LESS THAN 1/8" OR NO CLEARANCE)

Figure 4



CORRECT  
ROUTING  
BEHIND  
PLATE

Figure 5



FUEL TANK

CARBURETOR

SHUT-OFF  
VALVE

YELLOW DOT

Figure 6

MODEL: HMSK100  
SPEC: 159468X  
DOM: 02217CB0018

Warranty claims **MUST** contain all the above information from the engine ID decal.