



**SERVICE
BULLETIN
413
4 CYCLE**

ISSUED: July, 2000

SUBJECT: 120-Volt Starter Stays Engaged

STARTER MODEL NUMBER: 37000

DATE CODE: 0104 through 0196 (Fig. A)

We have identified a potential sticking contact switch on a small percentage of the above model starters. These starters are typically used on 8-11 HP snowblower product.

During the evaluation we found the installation sequence of the switch box mounting screws to be critical for proper operation. In most cases, loosening the two mounting screws, then reinstalling them in the correct sequence and to the proper torque, corrects the problem.

Repair/Inspection Procedure:

1. Verify the condition of the switch by attempting to start the unit with the starter.
2. If the condition exists, loosen the switch box screws as shown in Fig. B.
3. Next re-install the screws. **YOU MUST** tighten the screw closest to the fuel tank first and torque it to no more than 18-INCH LBS; then torque the second screw to the same value.
4. Re-test the starter operation by intentionally pushing the starter button sideways at 90-degree intervals as shown in Fig. C. If no sticking occurs, the customer is ready to use the machine.
5. Should the problem still exist, the starter must be replaced by ordering part number 33329E from your normal source of supply.
6. When the repair is complete, file a standard ESA 157 warranty claim form for the repair. If the starter was replaced, please return the defective starter with your claim. This repair typically takes 15 minutes.

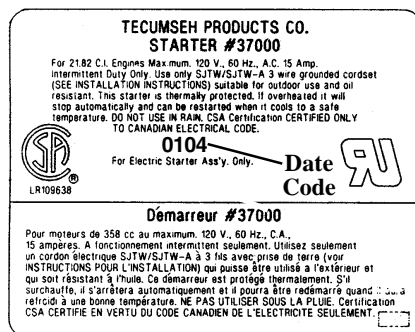


Fig. A

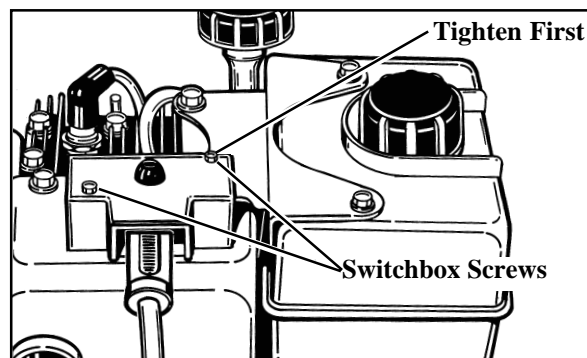


Fig. B

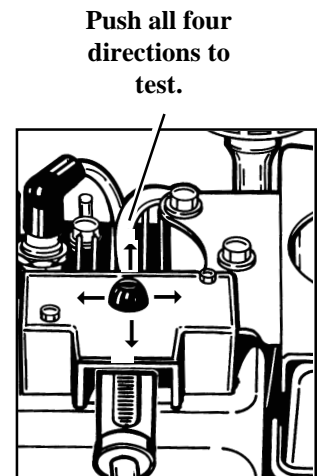


Fig. C