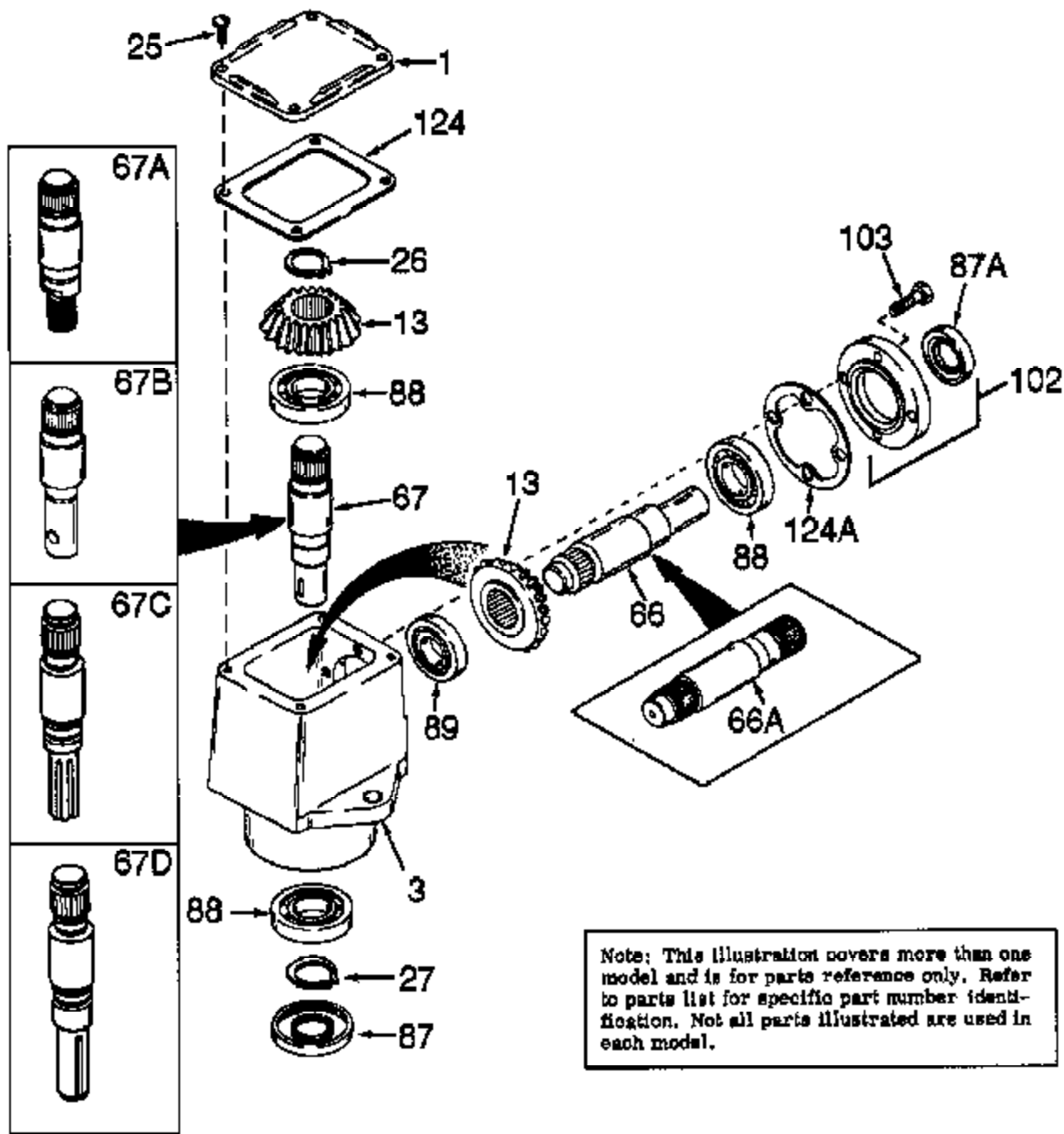


**NOTE: PARTS NOT ILLUSTRATED  
OR LISTED ARE SUPPLIED BY  
EQUIPMENT MANUFACTURER.**



**Note: This illustration covers more than one model and is for parts reference only. Refer to parts list for specific part number identification. Not all parts illustrated are used in each model.**

Ref #	Part Number	Qty	Description
1	772035		Left Hand Cover
3	770026		Right Angle Drive Housing
13	778046		Miter Gear
25	792025		Screw, 10-24 x 1/2"
26	788018		Snap Ring
27	788019		Snap Ring
66A	776074		Input Pinion Shaft
67	776075		Output Shaft
87A	788031		Oil Seal
87	788029		Oil Seal
88	780034		Ball Bearing
89	780024		Ball Bearing
102	786029		Retainer Cap & Seal (Incl. 87A & 103)
103	792043		Screw, 1/4-20 x 1"
124A	788030B		Cap Gasket
124	788028		Cover Gasket

RAD-1696-P91 Page 2 of 2  
Peerless