



| Ref # | Part Number | Qty | Description   |
|-------|-------------|-----|---|
|       | 1 33027B    |     | Cylinder (Incl. 2, 8, 9 & 20) (2-5/8" Bore)   |
|       | 2 26727     |     | Pin, Dowel  |
|       | 14 28277    |     | Washer, Flat  |
|       | 15 30589    |     | Rod, Governor (Incl. 14)  |
|       | 16 32651    |     | Lever, Governor   |
|       | 17 31335    |     | Clamp, Governor lever (Clamp is positioned towardspark plug end on 1977-78 and latermodels. It is positioned opposite spark plugend on earlier models.) |
|       | 18 650548   |     | Screw, 8-32 x 5/16"   |
|       | 19 31386    |     | Spring, Governor  |
|       | 20 32600    |     | Seal, Oil   |
|       | 30 32882A   |     | Crankshaft  |
|       | 32 32323    |     | Washer, Thrust  |
|       | 40 34851    |     | Piston, Pin & Ring Set (Std.) (2-5/8" Bore)   |
|       | 40 34852    |     | Piston, Pin & Ring Set (.010" OS)   |
|       | 40 34853    |     | Piston, Pin & Ring Set (.020" OS)   |
|       | 41 32603B   |     | Piston & Pin Ass'y.(Std.)(Incl. 43)(2 -5/8")  |
|       | 41 32604B   |     | Piston & Pin Ass'y. (.010" OS) (Incl. 43)   |
|       | 41 32605B   |     | Piston & Pin Ass'y. (.020" OS) (Incl. 43)   |
|       | 42 34854    |     | Ring Set (Std.) (2-5/8" Bore)   |
|       | 42 34855    |     | Ring Set (.010" OS)   |
|       | 42 34856    |     | Ring Set (.020" OS)   |
|       | 43 20381    |     | Ring, Piston pin retaining  |
|       | 45 32875    |     | Rod Assy., Connecting (Incl. 18)  |
|       | 46A 32609   |     | Plate, Lock (Do not use with 32610A locking type screw)   |
|       | 46 32610    |     | Connecting Rod Bolt (Early Production )   |
|       | 46 32610A   |     | Bolt, Connecting rod  |
|       | 48A 27241   |     | Lifter, Intake valve  |
|       | 48 27241    |     | Lifter, Exhaust valve   |
|       | 50 33154    |     | Camshaft  |
|       | 52 29914    |     | Pump Assy., Oil   |
|       | 60 29745    |     | Extension, Blower housing   |
|       | 66 30063    |     | Screw, Torx T-30, 1/4-20 x 1/2"   |
|       | 69 35261    |     | * Gasket, Mounting flange   |
|       | 70 32612A   |     | Flange Ass'y. (Incl. 72, 75 & 80)   |
|       | 72 30572    |     | Plug, Oil drain (Incl. 73)  |
|       | 72A 9556    |     | Oil Drain Plug (Use as required)  |
|       | 73 28833    |     | * Drain Plug Gasket (Do not use w/plastic plug)   |
|       | 75 27897    |     | Seal, Oil   |
|       | 80 30574    |     | Shaft, Mechanical governor  |
|       | 81 30590A   |     | Washer, Flat  |
|       | 82 30591    |     | Gear Assy., Governor (Incl. 81)   |
|       | 83 30588A   |     | Spool, Governor   |
|       | 84 29193    |     | Ring, Retaining   |
|       | 86 650488   |     | Screw, 1/4-20 x 1-1/4"  |
|       | 89 610951   |     | Key, Flywheel   |
|       | 92 650815   |     | Washer, Belleville  |
|       | 93 650607   |     | Nut, Flywheel   |
|       | 101 27276   |     | Cover, Spark plug   |
|       | 103 650489  |     | Screw, 1/4-20 x 5/8"  |
|       | 110 35349   |     | Ground Wire   |
|       | 119 33015A  |     | * Gasket, Cylinder head   |
|       | 120 33016A  |     | Head, Cylinder (Incl. 131)  |
|       | 125 32644A  |     | Intake Valve (STD)(Incl.151) (Inverted Ports)   |
|       | 125 32645A  |     | Intake Valve (1/32" OS)(Incl.151) (Inverted Ports)  |
|       | 126 29313C  |     | Exhaust Valve (STD)(Incl. 151) (Inverted Ports)   |
|       | 126 29315C  |     | Exhaust Valve (1/32" OS)(Incl. 151) (Inverted Ports)  |

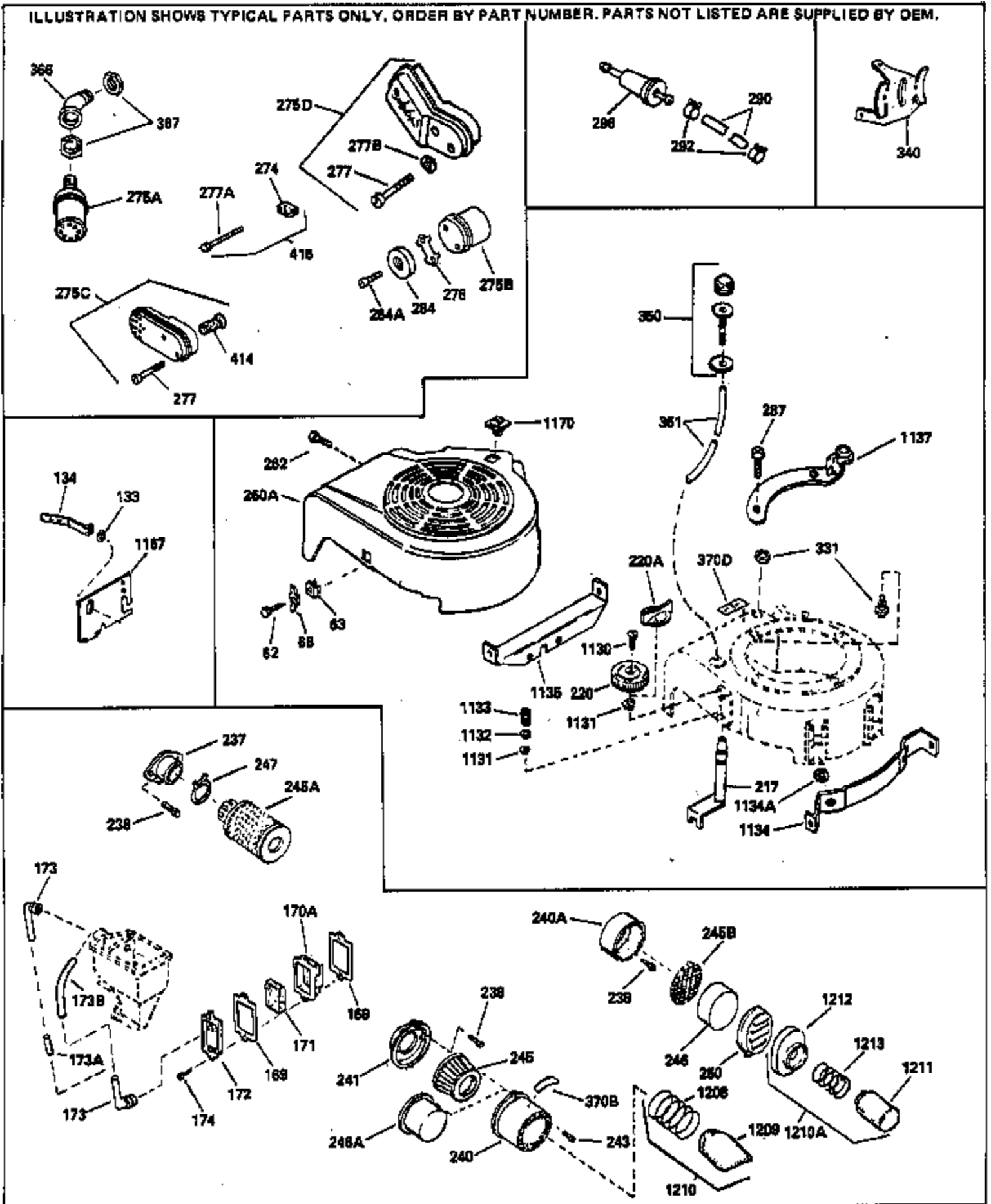
| Ref # | Part Number | Qty | Description  |
|-------|-------------|-----|--|
| 127   | 26073       |     | Washer (Not used in late production)   |
| 127   | 650691      |     | Washer (Used on late production)   |
| 130   | 6021A       |     | Screw, 5/16-18 x 1-1/2" (Use as requi red)   |
| 130   | 650818      |     | Screw, 5/16-18 x 1-1/2" (Use as requi red)   |
| 131   | 650694A     |     | Screw, 5/16-18 x 2" (Use as required)  |
| 131   | 650697A     |     | Screw, 5/16-18 x 2-1/2" (Use as requi red)   |
| 135   | 33636       |     | Spark Plug (J-8C)  |
| 149   | 31671       |     | Valve Spring Cap) (Used in early prod uction)  |
| 150   | 31672       |     | Spring, Valve  |
| 151   | 31673       |     | Cap, Lower valve spring  |
| 167   | 32924       |     | Spring, Speed adj. screw   |
| 168   | 650688      |     | Screw, 10-32 x 1"  |
| 169   | 31619A      |     | * Gasket, Valve spring cover   |
| 170   | 31337A      |     | Body Assy., Breather (Incl. 169 & 171 )  |
| 171   | 31410       |     | Element, Breather  |
| 174   | 650128      |     | Screw, 10-24 x 1/2"  |
| 178   | 29752       |     | Nut & Lockwasher, 1/4-28   |
| 181   | 6201        |     | Screw, 1/4-28 x 7/8"   |
| 182   | 6201        |     | Screw, 1/4-28 x 7/8"   |
| 184   | 26756       |     | * Gasket, Carburetor   |
| 185   | 32650       |     | Pipe, Intake   |
| 186   | 33151       |     | Link, Governor spring  |
| 200   | 33152A      |     | Control Bracket (Incl. 206)  |
| 201   | 33150       |     | Bracket, Control   |
| 203   | 31342       |     | Spring, Compression  |
| 204   | 650549      |     | Screw, 5-40 x 7/16"  |
| 206   | 610973      |     | Terminal Assy.   |
| 207   | 33133       |     | Link, Governor-to-throttle   |
| 209   | 30200       |     | Screw, 10-24 x 9/16"   |
| 223   | 650664      |     | Screw, 1/4-20 x 1-19/32"   |
| 224   | 32649A      |     | * Gasket, Intake   |
| 238   | 650707      |     | Screw, 10-32 x 5/8"  |
| 239   | 33051       |     | * Gasket, Air cleaner  |
| 240B  | 33005       |     | Body, Air cleaner  |
| 246B  | 33006       |     | Element, Air cleaner   |
| 248   | 33008       |     | Tube, Air cleaner  |
| 250A  | 33007       |     | Cover, Air cleaner   |
| 260   | 32455B      |     | Housing, Blower NOTE: Replacement hardware may differ when servicing starter assy. or blower housing. Refer to Service Bulletin 508. |
| 261   | 650561      |     | Screw, 1/4 20 x 5/8"   |
| 277   | 30063       |     | Screw, Torx T-30, 1/4-20 x 1/2" (Use as req.)  |
| 285A  | 590416      |     | Cup, Starter   |
| 286   | 590417      |     | Screen, Starter cup  |
| 287A  | 29752       |     | Nut & Lockwasher, 1/4-28 (Use as requ ired)  |
| 287   | 30513       |     | Screw & Lockwasher, 1/4-28 x 1/2"  |
| 287   |             |     | Pop Rivet (Purchase locally) (3/16" d ia.)   |
| 287   | 29716       |     | Screw, 1/4-28 x 7/16" (Use as require d)   |
| 290   | 29774       |     | Fuel Line(Braided 8-1/4")(21 cm)(Use as req.)  |
| 290   | 34357       |     | Fuel Line (Epichlorohydrin 6-3/4") (1 7 cm)  |
| 290   | 30705       |     | Fuel Line (Braided 16")(40 cm)(Use as req.)  |
| 292   | 26460       |     | Fuel Line Clamp (Use as required)  |
| 300   | 32671       |     | Fuel Tank (Incl. 292 & 301)  |
| 301   | 410144B     |     | Fuel Cap (Std.) (Use as required)  |
| 301   | 33032       |     | Fuel Cap (Use as required)   |
| 301   | 34210       |     | Fuel Cap (use as required)   |
| 311   | 27625       |     | Plug, Oil filler (Incl. 312)   |

| Ref # | Part Number | Qty | Description   |
|-------|-------------|-----|---|
|       | 312 29673   |     | * Gasket, Oil filler  |
|       | 325A 27275  |     | Clip, Hi-tension wire (Use as require d)  |
|       | 370 34346   |     | Decal, Instruction  |
|       | 370C 35344  |     | Decal, Speed control  |
|       | 370A 550223 |     | Name & Instruction Decal  |
|       | 375 610755  |     | Magneto (W/Ring Gear) NOTE: This magneto is not available as an assembly. The magneto number is shown for reference purposes only. Order component parts individually, as shown in parts breakdown. Refer to Division 5, Section B, page24 or Fiche 6, Grid F-11 for breakdown) |
|       | 377 30547A  |     | Contact Assy., Breaker  |
|       | 378 30548B  |     | Condenser   |
|       | 379 631021  |     | Inlet Needle, Seat & Clip Assy.   |
|       | 380 631597  |     | Carburetor (Incl. 184) Refer to Division 5, SectionA, page 104 or Fiche 6, Grid E-1 for breakdown)  |
|       | 390 590420A |     | Rewind Starter NOTE: Replacement hardware may differ when servicing starter assy. or blower housing. Refer to Service Bulletin 508. (Refer to Division 5, Section C, page 25 or Fiche 6, Grid G-3 for breakdown)  |
|       | 400 33238D  |     | * Gasket Set (Incl. items marked *)   |
|       | 420 730225  |     | SAE 30 4-Cycle Engine Oil (Quart)   |



| Ref # | Part Number | Qty | Description   |
|-------|-------------|-----|---|
|       | 19 31386    |     | Spring, Governor  |
|       | 32 32323    |     | Washer, Thrust  |
|       | 92 650815   |     | Washer, Belleville  |
|       | 93 650607   |     | Nut, Flywheel   |
|       | 167 32924   |     | Spring, Speed adj. screw  |
|       | 168 650688  |     | Screw, 10-32 x 1"   |
|       | 182 6201    |     | Screw, 1/4-28 x 7/8"  |
|       | 201 33150   |     | Bracket, Control  |
|       | 261 650561  |     | Screw, 1/4 20 x 5/8"  |
|       | 262 650561  |     | Screw, 1/4-20 x 5/8"  |
|       | 287 30513   |     | Screw & Lockwasher, 1/4-28 x 1/2"   |
|       | 287         |     | Pop Rivet (Purchase locally) (3/16" d ia.)  |
|       | 287 29716   |     | Screw, 1/4-28 x 7/16" (Use as require d)  |
|       | 306 34282   |     | "O" Ring (This "O" ring is required with metal fill tube only when replacement mounting flange with .777 dia. oil fill hole has been used.) |
| 370A  | 550223      |     | Name & Instruction Decal  |
|       | 370 34346   |     | Decal, Instruction  |
|       | 379 631021  |     | Inlet Needle, Seat & Clip Assy.   |
|       | 1175 590441 |     | Bracket Ass'y. (Use as required)  |
|       | 1176 650639 |     | Open End Rivet (Use as required)  |

ILLUSTRATION SHOWS TYPICAL PARTS ONLY. ORDER BY PART NUMBER. PARTS NOT LISTED ARE SUPPLIED BY OEM.



| Ref # | Part Number | Qty | Description  |
|-------|-------------|-----|--|
| 19    | 31386       |     | Spring, Governor   |
| 32    | 32323       |     | Washer, Thrust   |
| 167   | 32924       |     | Spring, Speed adj. screw                                 |
| 168   | 650688      |     | Screw, 10-32 x 1"  |
| 169   | 31619A      |     | * Gasket, Valve spring cover                             |
| 171   | 31410       |     | Element, Breather  |
| 174   | 650128      |     | Screw, 10-24 x 1/2"                                      |
| 182   | 6201        |     | Screw, 1/4-28 x 7/8"                                     |
| 201   | 33150       |     | Bracket, Control   |
| 238   | 650707      |     | Screw, 10-32 x 5/8"                                      |
| 262   | 650561      |     | Screw, 1/4-20 x 5/8"                                     |
| 275A  | 30911       |     | Muffler  |
| 277   | 30063       |     | Screw, Torx T-30, 1/4-20 x 1/2" (Use as req.)            |
| 287   | 30513       |     | Screw & Lockwasher, 1/4-28 x 1/2"                        |
| 287   |             |     | Pop Rivet (Purchase locally) (3/16" d ia.)               |
| 287   | 29716       |     | Screw, 1/4-28 x 7/16" (Use as require d)                 |
| 290   | 29774       |     | Fuel Line(Braided 8-1/4")(21 cm)(Use as req.)            |
| 290   | 34357       |     | Fuel Line (Epichlorohydrin 6-3/4") (1 7 cm)              |
| 290   | 30705       |     | Fuel Line (Braided 16")(40 cm)(Use as req.)              |
| 292   | 26460       |     | Fuel Line Clamp (Use as required)                        |
| 415   | 730162      |     | Muffler Adapter Kit (Incl. 274 & 277A ) (Inverted Ports) |