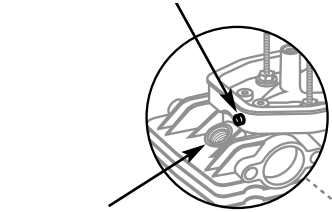


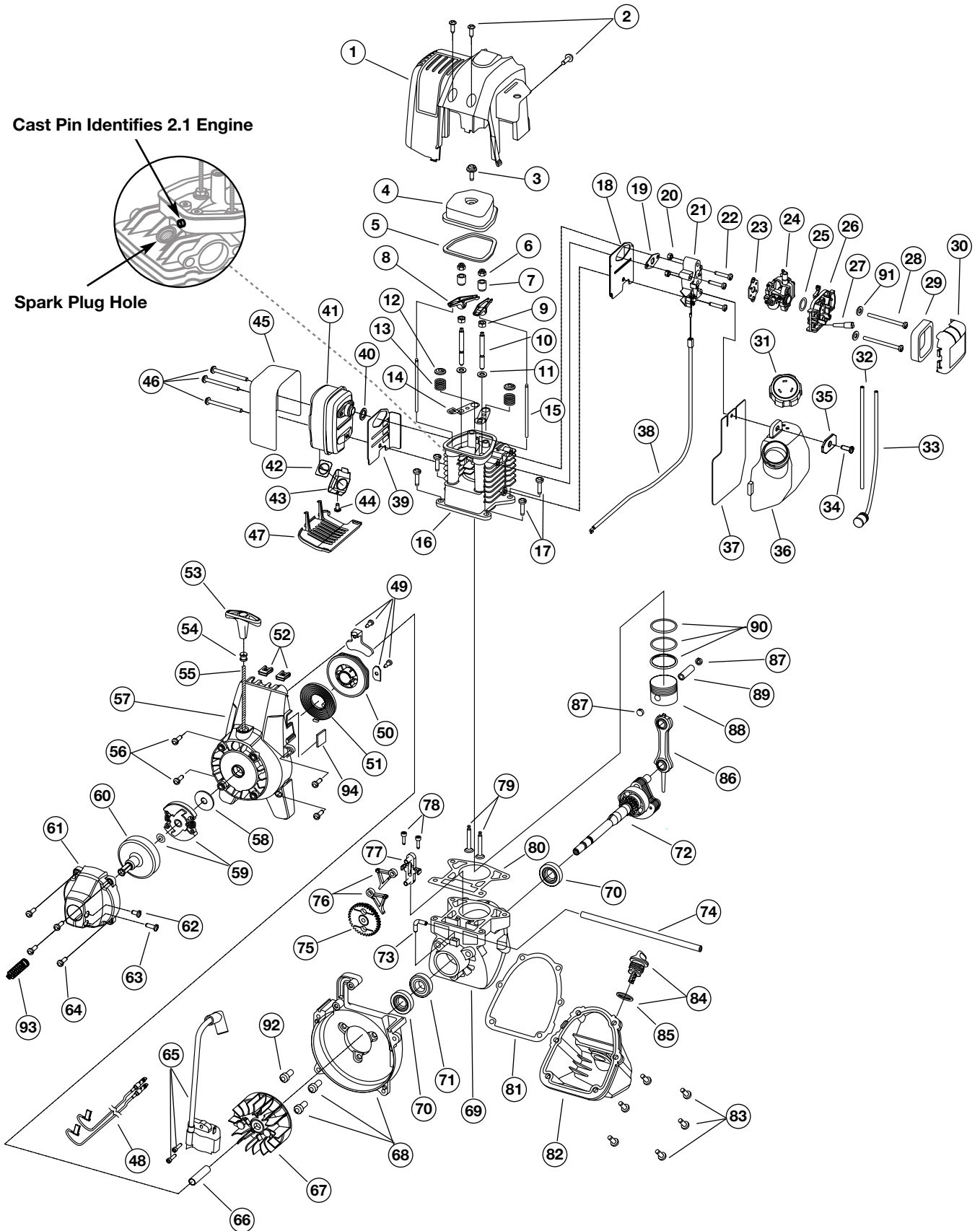
**ENGINE PARTS - MODEL 890r**  
**4-CYCLE GAS TRIMMER**  
(Serial Number 911129007 and greater)

Part Numbers On Following Page

Cast Pin Identifies 2.1 Engine



Spark Plug Hole



## ENGINE PARTS - MODEL 890r

### 4-CYCLE GAS TRIMMER

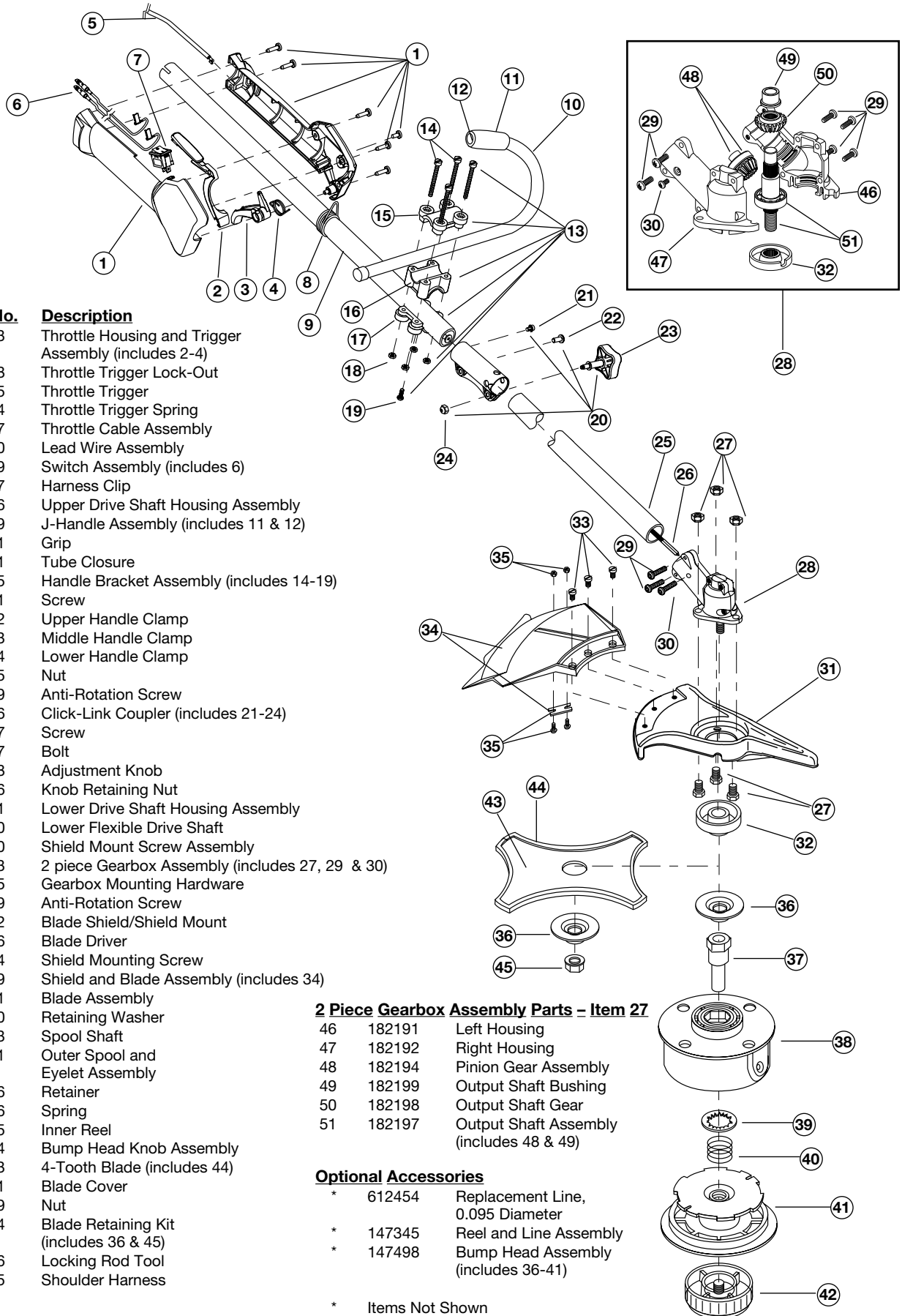
(Serial Number 911129007 and greater)

| <u>Item</u> | <u>Part No.</u> | <u>Description</u>                                 | <u>Item</u> | <u>Part No.</u> | <u>Description</u>                             |
|-------------|-----------------|--|-------------|-----------------|--|
| 1           | 182338          | Engine Cover                                       | 49          | 182363          | Pulley Retainer Assembly                       |
| 2           | 182339          | Engine Cover Screws                                | 50          | 181597          | Recoil Pulley                                  |
| 3           | 181025          | Valve Cover Screw                                  | 51          | 613102          | Recoil Spring                                  |
| 4           | 182098          | Valve Cover  | 52          | 182366          | Nut Clip                                       |
| 5           | 182099          | Valve Cover Gasket                                 | 53          | 181079          | Pull Handle                                    |
| 6           | 182340          | Rocker Adjustment Nut                              | 54          | 611061          | Rope Guide                                     |
| 7           | 182101          | Rocker Arm Pivot                                   | 55          | 613103          | Rope   |
| 8           | 182100          | Rocker Arm   | 56          | 181020          | Starter Housing Screw                          |
| 9           | 181034          | Hex Nut  | 57          | 182367          | Starter Housing Assembly (includes 49-56)      |
| 10          | 182341          | Rocker Arm Stud                                    | 58          | 182368          | Clutch Washer                                  |
| 11          | 181035          | Washer   | 59          | 182369          | Clutch with Spacer                             |
| 12          | 182103          | Valve Spring Retainer                              | 60          | 153592          | Clutch Drum                                    |
| 13          | 181038          | Valve Spring                                       | 61          | 182364          | Clutch Cover                                   |
| 14          | 182102          | Push Rod Guide                                     | 62          | 145569          | Anti-Rotation Screw                            |
| 15          | 181033          | Push Rod   | 63          | 181345          | Screw  |
| <b>16</b>   | <b>182343</b>   | <b>Cylinder Head</b>                               | 64          | 181080          | Clutch Cover Screw                             |
| <b>16</b>   | <b>182700</b>   | <b>Cylinder Head (2.1 Engine)</b>                  | 65          | 182725          | Ignition Module with Screws                    |
| 17          | 182344          | Cylinder Screw                                     | 66          | 181065          | Spacer   |
| 18          | 182345          | Intake Baffle                                      | 67          | 181867          | Flywheel                                       |
| 19          | 182346          | Carburetor Mount Gasket                            | 68          | 182371          | Shroud Assembly with Screws (includes 93)      |
| 20          | 181034          | Nut  | 69          | 182376          | Crankcase Assembly (includes 70-74)            |
| 21          | 182347          | Carburetor Mount (includes 20)                     | 70          | 610309          | Oil Seal                                       |
| 22          | 182348          | Carburetor Mount Screw                             | 71          | 182372          | Bearing  |
| 23          | 182427          | Carburetor Gasket                                  | 72          | 182380          | Crankshaft                                     |
| <b>24</b>   | <b>182349</b>   | <b>Carburetor with Primer</b>                      | 73          | 182375          | 90° Elbow                                      |
| <b>24</b>   | <b>182654</b>   | <b>Carburetor with Primer (2.1 Engine)</b>         | 74          | 182379          | Breather Hose                                  |
| 25          | 181751          | O-Ring, Carburetor                                 | <b>75</b>   | <b>181015</b>   | <b>Cam Gear</b>                                |
| 26          | 182350          | Air Filter/Choke Cover Assembly (includes 29 & 30) | <b>75</b>   | <b>182666</b>   | <b>Cam Gear (2.1 Engine)</b>                   |
| 27          | 182097          | Breather Tube                                      | <b>76</b>   | <b>181014</b>   | <b>Cam Follower</b>                            |
| 28          | 181750          | Air Filter Mounting Screw                          | <b>76</b>   | <b>182667</b>   | <b>Cam Follower (2.1 Engine)</b>               |
| 29          | 181757          | Air Filter   | 77          | 181013          | Cam Bracket                                    |
| 30          | 182351          | Air Filter Cover                                   | 78          | 181012          | Cam Bracket Screw                              |
| 31          | 182271          | Fuel Cap   | 79          | 181040          | Valves, Intake and Exhaust                     |
| 32          | 182352          | Fuel Return Line                                   | 80          | 182374          | Cylinder Gasket                                |
| 33          | 182353          | Fuel Pick-Up Line with Filter                      | 81          | 181018          | Oil Pan Gasket                                 |
| 34          | 181080          | Screw  | 82          | 182377          | Oil Pan (includes 81 & 83)                     |
| 35          | 182354          | Washer   | 83          | 181020          | Oil Pan Screw                                  |
| 36          | 182355          | Fuel Tank Assembly (includes 31-33)                | 84          | 182378          | Dipstick Assembly (includes 85)                |
| 37          | 182356          | Fuel Tank Shield                                   | 85          | 182290          | O-Ring   |
| 38          | 182357          | Throttle Cable                                     | 86          | 181009          | Connecting Rod                                 |
| 39          | 182358          | Muffler Baffle                                     | 87          | 181008          | Wrist Pin Button                               |
| 40          | 181048          | Muffler Gasket                                     | 88          | 182381          | Piston   |
| 41          | 182359          | Muffler (includes 40, 42-44)                       | 89          | 181006          | Wrist Pin                                      |
| 42          | 180890          | Spark Arrestor Screen                              | 90          | 181005          | Piston Ring Set                                |
| 43          | 181045          | Screen Cover                                       | 91          | 182409          | Washer   |
| 44          | 181046          | Screw  | 92          | 181861          | Screw  |
| 45          | 182360          | Muffler Shield                                     | 93          | 612468          | Compression Spring                             |
| 46          | 182361          | Muffler Mounting Screw                             | 94          | 182537          | Grommet  |
| 47          | 182362          | Muffler Cover                                      | *           | 180852          | Spark Plug                                     |
| 48          | 182536          | Switch Wire Assembly                               | *           | 182382          | Short Block Assembly (includes 3-17, 69-90)    |
|             |                 |  | *           | 182383          | Cylinder Assembly (includes 9-11, 14, 16 & 80) |
|             |                 |  | *           | 180142          | Starter Pawl Repair Kit                        |
|             |                 |  | *           | 182935          | Carburetor Repair Kit                          |
|             |                 |  | *           |                 | Parts not shown                                |

**BOOM AND TRIMMER PARTS - MODEL 890r**

**4-CYCLE GAS TRIMMER**

(Serial Number 91129007 and greater)



| Item | Part No. | Description  |
|------|----------|--|
| 1    | 182543   | Throttle Housing and Trigger Assembly (includes 2-4) |
| 2    | 182538   | Throttle Trigger Lock-Out                            |
| 3    | 182385   | Throttle Trigger                                     |
| 4    | 610314   | Throttle Trigger Spring                              |
| 5    | 182357   | Throttle Cable Assembly                              |
| 6    | 182540   | Lead Wire Assembly                                   |
| 7    | 182539   | Switch Assembly (includes 6)                         |
| 8    | 610327   | Harness Clip   |
| 9    | 182386   | Upper Drive Shaft Housing Assembly                   |
| 10   | 181099   | J-Handle Assembly (includes 11 & 12)                 |
| 11   | 612831   | Grip   |
| 12   | 612021   | Tube Closure   |
| 13   | 683295   | Handle Bracket Assembly (includes 14-19)             |
| 14   | 181811   | Screw  |
| 15   | 181812   | Upper Handle Clamp                                   |
| 16   | 181813   | Middle Handle Clamp                                  |
| 17   | 181814   | Lower Handle Clamp                                   |
| 18   | 181815   | Nut  |
| 19   | 145569   | Anti-Rotation Screw                                  |
| 20   | 181616   | Click-Link Coupler (includes 21-24)                  |
| 21   | 182057   | Screw  |
| 22   | 181617   | Bolt   |
| 23   | 181618   | Adjustment Knob                                      |
| 24   | 181886   | Knob Retaining Nut                                   |
| 25   | 182541   | Lower Drive Shaft Housing Assembly                   |
| 26   | 613300   | Lower Flexible Drive Shaft                           |
| 27   | 182200   | Shield Mount Screw Assembly                          |
| 28   | 182193   | 2 piece Gearbox Assembly (includes 27, 29 & 30)      |
| 29   | 182195   | Gearbox Mounting Hardware                            |
| 30   | 145569   | Anti-Rotation Screw                                  |
| 31   | 147492   | Blade Shield/Shield Mount                            |
| 32   | 182196   | Blade Driver   |
| 33   | 683304   | Shield Mounting Screw                                |
| 34   | 683299   | Shield and Blade Assembly (includes 34)              |
| 35   | 682061   | Blade Assembly                                       |
| 36   | 147490   | Retaining Washer                                     |
| 37   | 612483   | Spool Shaft  |
| 38   | 683301   | Outer Spool and Eyelet Assembly                      |
| 39   | 612026   | Retainer   |
| 40   | 610636   | Spring   |
| 41   | 147495   | Inner Reel   |
| 42   | 180814   | Bump Head Knob Assembly                              |
| 43   | 145873   | 4-Tooth Blade (includes 44)                          |
| 44   | 613231   | Blade Cover  |
| 45   | 181699   | Nut  |
| *    | 180014   | Blade Retaining Kit (includes 36 & 45)               |
| *    | 613226   | Locking Rod Tool                                     |
| *    | 682075   | Shoulder Harness                                     |

**2 Piece Gearbox Assembly Parts - Item 27**

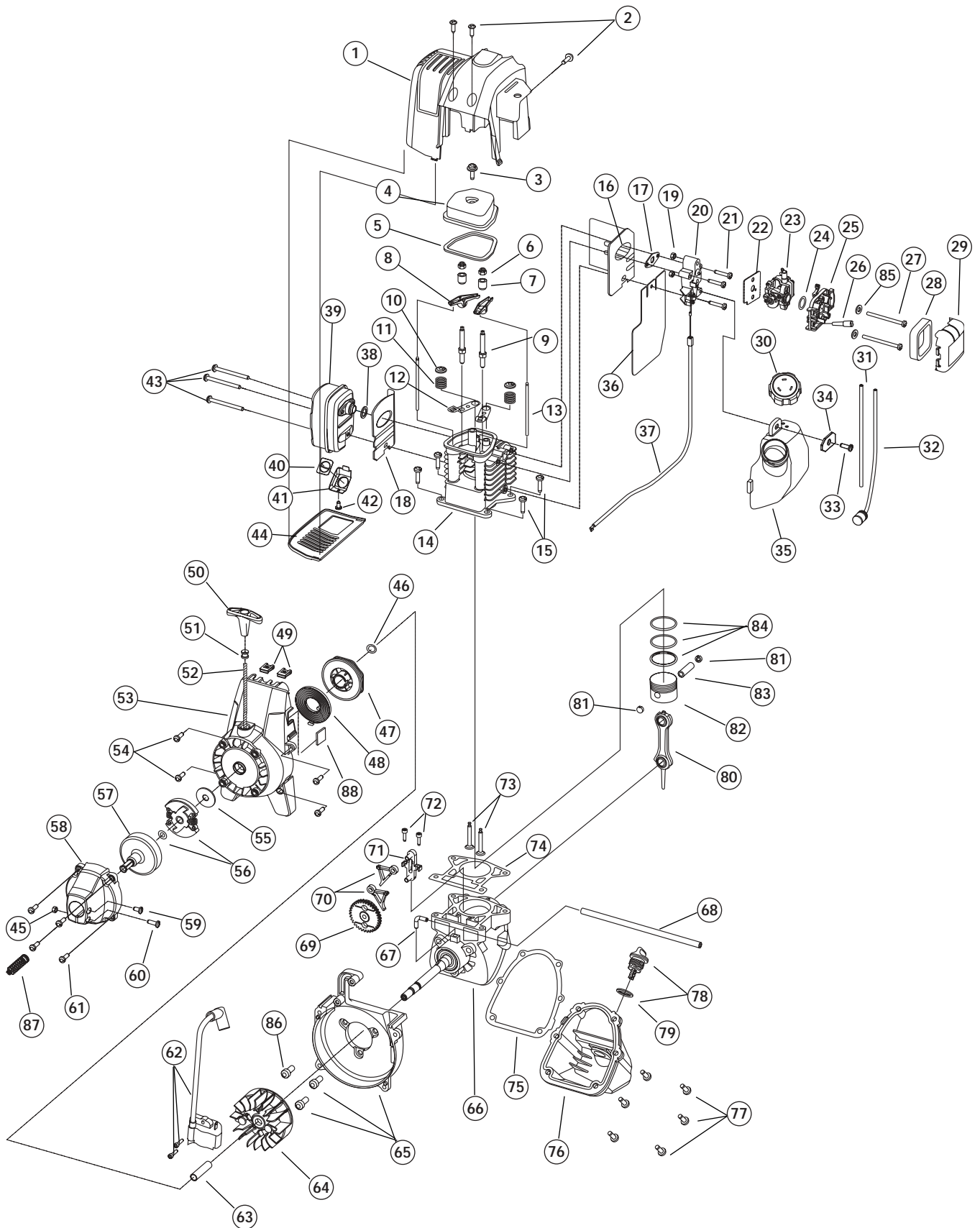
|    |        |  |
|----|--------|--|
| 46 | 182191 | Left Housing                             |
| 47 | 182192 | Right Housing                            |
| 48 | 182194 | Pinion Gear Assembly                     |
| 49 | 182199 | Output Shaft Bushing                     |
| 50 | 182198 | Output Shaft Gear                        |
| 51 | 182197 | Output Shaft Assembly (includes 48 & 49) |

**Optional Accessories**

|   |        |                                     |
|---|--------|-------------------------------------|
| * | 612454 | Replacement Line, 0.095 Diameter    |
| * | 147345 | Reel and Line Assembly              |
| * | 147498 | Bump Head Assembly (includes 36-41) |

\* Items Not Shown

Part Numbers On Following Page



**ENGINE PARTS - MODEL 890r  
4-CYCLE GAS TRIMMER**

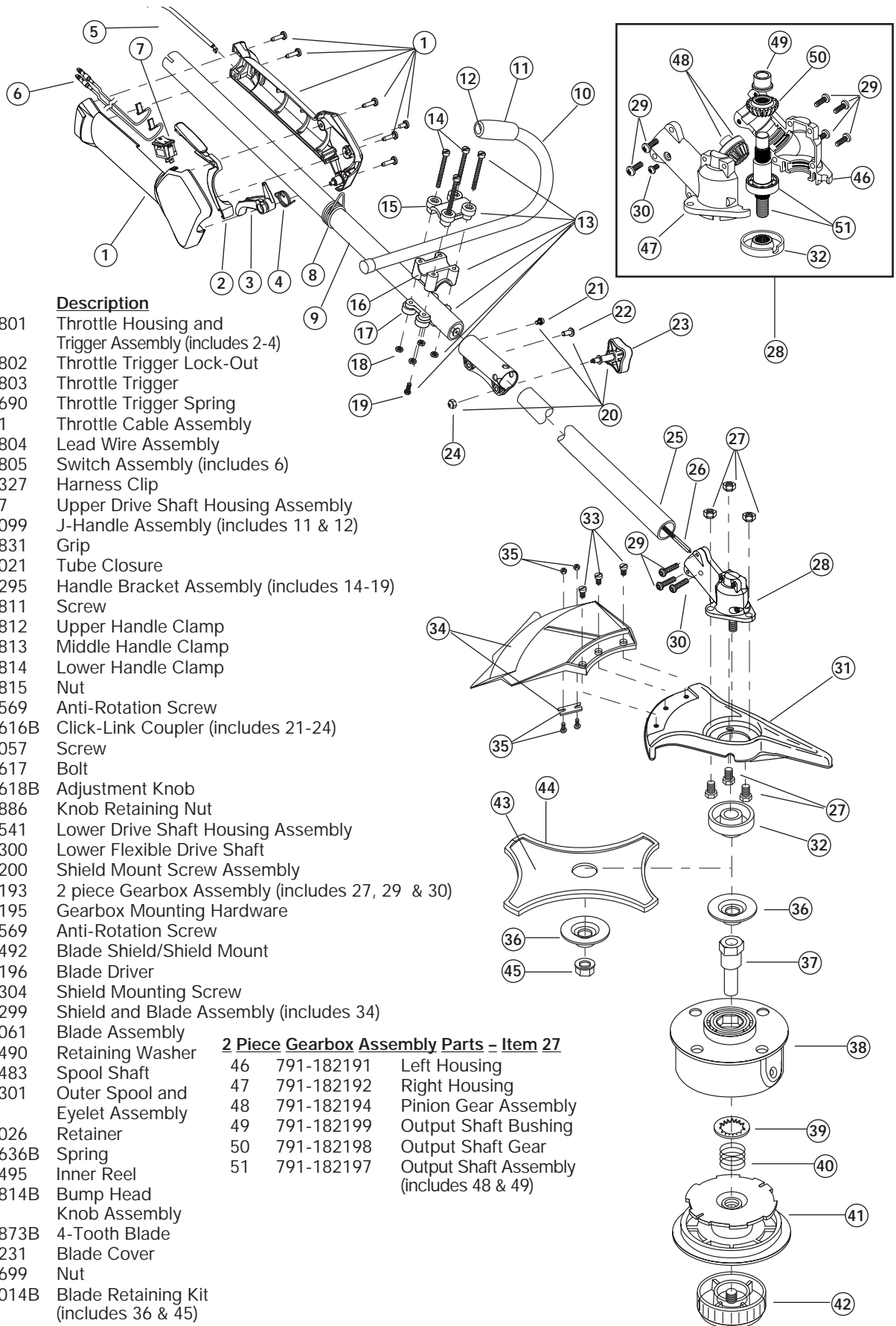
PPN-41CD890A034

| <u>Item</u> | <u>Part No.</u> | <u>Description</u>                                    | <u>Item</u> | <u>Part No.</u> | <u>Description</u>                               |
|-------------|-----------------|---|-------------|-----------------|--|
| 1           | 753-1222        | Engine Cover  | 46          | 791-181247      | Pal Nut Retaining Ring                           |
| 2           | 791-182339      | Engine Cover Screws                                   | 47          | 753-1199        | Recoil Pulley                                    |
| 3           | 791-181025      | Valve Cover Screw                                     | 48          | 753-1236        | Recoil Spring                                    |
| 4           | 791-182098      | Valve Cover   | 49          | 791-182366      | Nut Clip   |
| 5           | 791-182099      | Valve Cover Gasket                                    | 50          | 791-181079      | Pull Handle                                      |
| 6           | 791-182340      | Rocker Adjustment Nut                                 | 51          | 791-611061      | Rope Guide                                       |
| 7           | 791-182101      | Rocker Arm Pivot                                      | 52          | 791-613103      | Rope   |
| 8           | 791-182100      | Rocker Arm  | 52          | 791-181020      | Starter Housing Screw                            |
| 9           | 791-182341      | Rocker Arm Stud                                       | 54          | 753-04154       | Starter Housing Assembly<br>(includes 46-52)     |
| 10          | 791-182103      | Valve Spring Retainer                                 | 55          | 791-182368      | Clutch Washer                                    |
| 11          | 791-181038      | Valve Spring  | 56          | 753-1238        | Clutch with Spacer                               |
| 12          | 791-182102      | Push Rod Guide  | 57          | 791-153592      | Clutch Drum                                      |
| 13          | 791-181033      | Push Rod  | 58          | 753-1239        | Clutch Cover                                     |
| 14          | 791-182653      | Cylinder Head Assembly                                | 59          | 791-145569      | Anti-Rotation Screw                              |
| 15          | 791-182344      | Cylinder Screw  | 60          | 753-1240        | Screw  |
| 16          | 753-1226        | Intake Baffle   | 61          | 791-181345      | Clutch Cover Screw                               |
| 17          | 791-182749      | Carburetor Mount Gasket                               | 62          | 791-182725      | Ignition Module with Screws                      |
| 18          | 753-1232        | Muffler Baffle  | 63          | 791-181065      | Spacer   |
| 19          | 791-181034      | Nut   | 64          | 791-181867      | Flywheel   |
| 20          | 791-182347      | Carburetor Mount (includes 19)                        | 65          | 791-182743      | Shroud Assembly with Screws<br>(includes 86)     |
| 21          | 791-182348      | Carburetor Mount Screw                                | 66          | 791-182376      | Crankcase Assembly                               |
| 22          | 791-182732      | Carburetor Gasket                                     | 67          | 791-182375      | 90° Elbow  |
| 23          | 753-1225        | Carburetor with Primer                                | 68          | 791-182379      | Breather Hose                                    |
| 24          | 791-181751      | O-Ring, Carburetor                                    | 69          | 791-181015      | Cam Gear   |
| 25          | 791-182350      | Air Filter/Choke Cover Assembly<br>(includes 29 & 30) | 70          | 753-1242        | Cam Follower                                     |
| 26          | 791-182097      | Breather Tube   | 71          | 791-181013      | Cam Bracket                                      |
| 27          | 791-181750      | Air Filter Mounting Screw                             | 72          | 791-181012      | Cam Bracket Screw                                |
| 28          | 791-181757      | Air Filter  | 73          | 791-181040      | Valves, Intake and Exhaust                       |
| 29          | 791-182351      | Air Filter Cover                                      | 74          | 791-182374      | Cylinder Gasket                                  |
| 30          | 791-182271      | Fuel Cap  | 75          | 791-181018      | Oil Pan Gasket                                   |
| 31          | 791-182352      | Fuel Return Line                                      | 76          | 791-182377      | Oil Pan (includes 75 & 77)                       |
| 32          | 791-182353      | Fuel Pick-Up Line with Filter                         | 77          | 791-181020      | Oil Pan Screw                                    |
| 33          | 791-181080      | Screw   | 78          | 791-182378      | Dipstick Assembly (includes 79)                  |
| 34          | 791-182354      | Washer  | 79          | 791-182290      | O-Ring   |
| 35          | 791-182355      | Fuel Tank Assembly (includes 31-33)                   | 80          | 791-181009      | Connecting Rod                                   |
| 36          | 791-182356      | Fuel Tank Shield                                      | 81          | 791-181008      | Wrist Pin Button                                 |
| 37          | 753-1231        | Throttle Cable  | 82          | 753-1243        | Piston   |
| 38          | 791-181048      | Muffler Gasket  | 83          | 791-181006      | Wrist Pin  |
| 39          | 791-182359      | Muffler (includes 40, 42-44)                          | 84          | 791-181005      | Piston Ring Set                                  |
| 40          | 791-180890      | Spark Arrestor Screen                                 | 85          | 791-182409      | Washer   |
| 41          | 791-181045      | Screen Cover  | 86          | 791-181861      | Screw  |
| 42          | 791-181046      | Screw   | 87          | 791-612468      | Compression Spring                               |
| 43          | 791-182361      | Muffler Mounting Screw                                | 88          | 791-182537      | Grommet  |
| 44          | 753-04092       | Muffler Cover   | *           | 791-180852B     | Spark Plug                                       |
| 45          | 753-1241        | Nut   | *           | 753-04087       | Short Block Assembly<br>(includes 3-15, & 66-84) |
|             |                 |   | *           | 791-180142      | Starter Pawl Repair Kit                          |
|             |                 |   | *           | 753-04014       | Carburetor Repair Kit                            |
|             |                 |   | *           | 791-182745      | Cylinder Assembly (includes 9, 12, 14, 74)       |
|             |                 |   | *           |                 | Parts not shown                                  |



BOOM AND TRIMMER PARTS - MODEL 890r  
4-CYCLE GAS TRIMMER

PPN-41CD890A034



| Item | Part No.    | Description  |
|------|-------------|--|
| 1    | 791-182801  | Throttle Housing and Trigger Assembly (includes 2-4) |
| 2    | 791-182802  | Throttle Trigger Lock-Out                            |
| 3    | 791-182803  | Throttle Trigger                                     |
| 4    | 791-182690  | Throttle Trigger Spring                              |
| 5    | 753-1231    | Throttle Cable Assembly                              |
| 6    | 791-182804  | Lead Wire Assembly                                   |
| 7    | 791-182805  | Switch Assembly (includes 6)                         |
| 8    | 791-610327  | Harness Clip   |
| 9    | 753-1247    | Upper Drive Shaft Housing Assembly                   |
| 10   | 791-181099  | J-Handle Assembly (includes 11 & 12)                 |
| 11   | 791-612831  | Grip   |
| 12   | 791-612021  | Tube Closure   |
| 13   | 791-683295  | Handle Bracket Assembly (includes 14-19)             |
| 14   | 791-181811  | Screw  |
| 15   | 791-181812  | Upper Handle Clamp                                   |
| 16   | 791-181813  | Middle Handle Clamp                                  |
| 17   | 791-181814  | Lower Handle Clamp                                   |
| 18   | 791-181815  | Nut  |
| 19   | 791-145569  | Anti-Rotation Screw                                  |
| 20   | 791-181616B | Click-Link Coupler (includes 21-24)                  |
| 21   | 791-182057  | Screw  |
| 22   | 791-181617  | Bolt   |
| 23   | 791-181618B | Adjustment Knob                                      |
| 24   | 791-181886  | Knob Retaining Nut                                   |
| 25   | 791-182541  | Lower Drive Shaft Housing Assembly                   |
| 26   | 791-613300  | Lower Flexible Drive Shaft                           |
| 27   | 791-182200  | Shield Mount Screw Assembly                          |
| 28   | 791-182193  | 2 piece Gearbox Assembly (includes 27, 29 & 30)      |
| 29   | 791-182195  | Gearbox Mounting Hardware                            |
| 30   | 791-145569  | Anti-Rotation Screw                                  |
| 31   | 791-147492  | Blade Shield/Shield Mount                            |
| 32   | 791-182196  | Blade Driver   |
| 33   | 791-683304  | Shield Mounting Screw                                |
| 34   | 791-683299  | Shield and Blade Assembly (includes 34)              |
| 35   | 791-682061  | Blade Assembly                                       |
| 36   | 791-147490  | Retaining Washer                                     |
| 37   | 791-612483  | Spool Shaft  |
| 38   | 791-683301  | Outer Spool and Eyelet Assembly                      |
| 39   | 791-612026  | Retainer   |
| 40   | 791-610636B | Spring   |
| 41   | 791-147495  | Inner Reel   |
| 42   | 791-180814B | Bump Head Knob Assembly                              |
| 43   | 791-145873B | 4-Tooth Blade  |
| 44   | 791-613231  | Blade Cover  |
| 45   | 791-181699  | Nut  |
| *    | 791-180014B | Blade Retaining Kit (includes 36 & 45)               |
| *    | 791-613226  | Locking Rod Tool                                     |
| *    | 791-682075  | Shoulder Harness                                     |

**2 Piece Gearbox Assembly Parts - Item 27**

|    |            |  |
|----|------------|--|
| 46 | 791-182191 | Left Housing                             |
| 47 | 791-182192 | Right Housing                            |
| 48 | 791-182194 | Pinion Gear Assembly                     |
| 49 | 791-182199 | Output Shaft Bushing                     |
| 50 | 791-182198 | Output Shaft Gear                        |
| 51 | 791-182197 | Output Shaft Assembly (includes 48 & 49) |