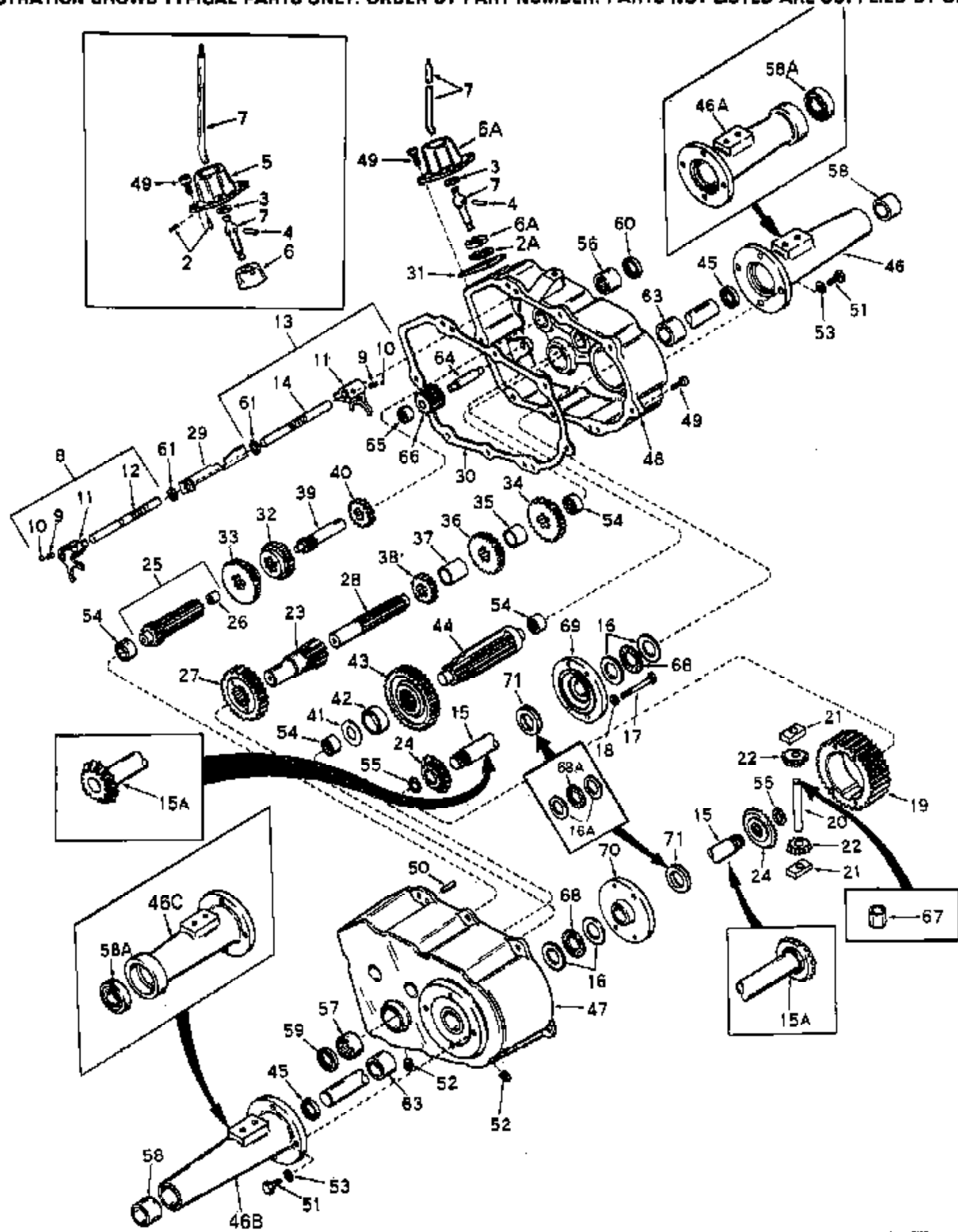


ILLUSTRATION SHOWS TYPICAL PARTS ONLY. ORDER BY PART NUMBER. PARTS NOT LISTED ARE SUPPLIED BY OEM.



Ref #	Part Number	Qty	Description
2	792000		Pin, Groove (Transaxle serial nos. 5318 thru 9370 only on Model 1708)
3	792001		Ring, Quad
4	792049		Pin, Drive
5	784018A		Housing, Shift lever (Transaxle serial nos. 5318 thru 9370 only on Model 1708)
6	784018A		Keeper, Shift lever (Transaxle serial nos. 5318 thru 9370 only on Model 1708)
7	784030		Lever, Shift
8	784056		Rod, Shift (Incl. 9 thru 12 & 61)
9	792003		Spring
10	792004	1700-1714-2	Ball, Steel
11	784004	Peerless	Fork, Shifter
12	784057		Rod, Shifter
13	784054		Rod, Shift (Incl. 9, 10, 11, 14 & 61)
14	784055		Rod, Shifter
15A	774033		Axle Assy. (4.125 long)
16	780045		Washer, Thrust
16A	780045		Washer, Thrust NOTE: Single washer No. 780005 can be used interchangeably in place of 2 No. 780045 washers and 1 No. 780012 thrust bearing in this location only.
17	792002		Screw, 1/4-20 x 2-1/2"
18	792006		Washer, Lock, 1/4"
19	778033A		Gear, Ring (1.500 wide, 31 teeth)
20	786019		Pin, Drive (.497 dia. x 3.357 long)
21	786027		Block, Drive
22	778014		Pinion, Bevel
23	776022		Pinion & Bushing, Brake (3.687 long)
25	776014		Shifter Shaft & Bearing (Incl 26)(4.5 62 long)
26	780018		Bearing
27	778037		Gear, Idler
28	776032		Shaft, Idler (.873 dia. x 5.760 long)
29	784074		Stop, Shifter
30	788026		Gasket, Case & Cover
31	788003		Gasket, Shift lever housing
32	778019		Gear, Shifting (20 teeth)
33	778020		Gear, Shifting (26 teeth)
34	778021		Gear, Spur (26 teeth)
35	786014		Spacer (.885 ID x 1.125 OD x .795 lon g
36	778022		Gear, Spur (22 teeth)
37	786015		Spacer (.885 ID x 1.125 OD x 1.22 lon g)
38	778023		Gear, Spur (16 teeth)
39	776027		Shaft, Input (3.990 long)
40	778024		Spur Gear, Input shaft
41	780001		Washer
42	786017		Spacer (1.321 ID x 1.437 OD x .620 lo ng)
43	778036		Gear, Output
44	778041		Pinion. Output
45	788007		Seal, Oil
47	772047		Cover, Transaxle (Incl. 54, 57 & 63)
48	770035		Case, Transaxle (Incl. 56 & 63)
49	792007		Screw, 1/4-20 x 3/4"
50	786026		Pin, Dowel (.312 dia. x 7.47 long)
50	792008		Pin, Dowel (.250 dia. x .750 long)

Ref #	Part Number	Qty	Description
52	792010		Plug, Pipe
54	780013		Bearing (closed end)
56	780011		Bearing (.750 ID x 1.250 OD x 1.00 lo ng)
57	780055		Bearing (1.125 ID x 1.375 OD x .750 l ong)
59	788008		Seal, Oil
60	788009		Seal, Oil
61	792017		Ring, Snap
63	780002		Bearing (1.003 ID. x 1.253 OD x 1. lo ng)
64	776008		Shaft, Reverse idler (2.554 long)
65	786008		Spacer, Reverse idler
66	778016		Idler, Reverse
67	786010		Spacer (.531 ID x .844 OD x 1.594 lon g)
68A	780012	1700-1714-2 Peerless	Bearing, Thrust NOTE: Single washer No. 780005 can be used interchangeably in place of 2 No. 780045 washers and 1 No. 780012 thrust bearing in this location only.
68	780012		Bearing, Thrust
69	774037		Carrier, Differential
70	774036		Carrier, Differential
71	780005		Washer