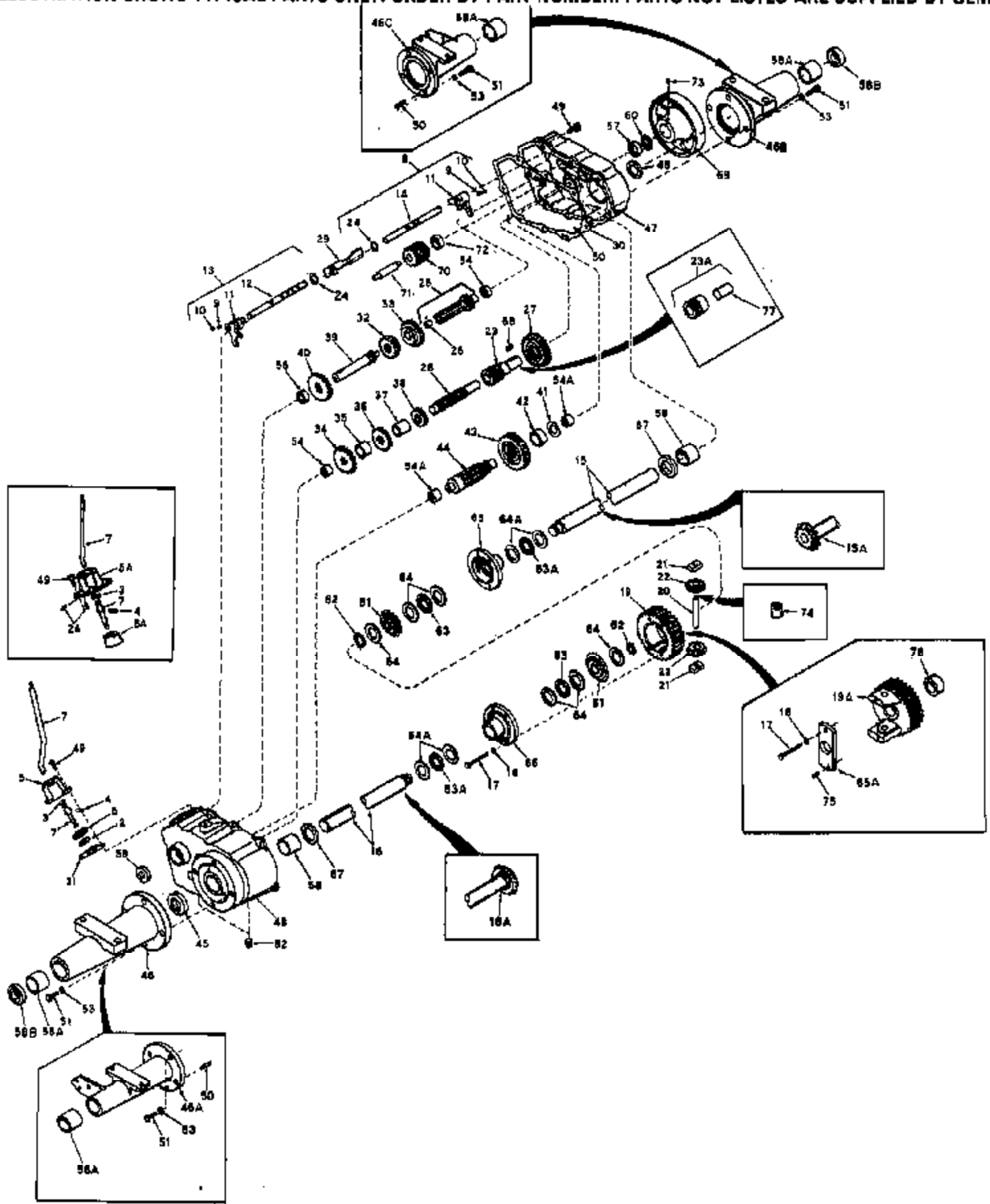


**ILLUSTRATION SHOWS TYPICAL PARTS ONLY. ORDER BY PART NUMBER. PARTS NOT LISTED ARE SUPPLIED BY OEM.**



| Ref # | Part Number | Qty       | Description   |
|-------|-------------|-----------|---|
| 2     | 792016      |           | Ring, Retainer  |
| 3     | 792001      |           | Ring, Quad  |
| 4     | 792049      |           | Pin, Drive  |
| 5     | 784060      |           | Housing, Shift lever (For use on models with retainer ring, Ref. No. 2) |
| 6     | 784053      |           | Keeper, Shift lever (Flat style)  |
| 7     | 784024      |           | Lever, Shift  |
| 8     | 784054      |           | Rod Assy., Shift (Incl. 9, 10, 11, 14 & 24)                             |
| 9     | 792003      |           | Spring  |
| 10    | 792004      |           | Ball, Steel   |
| 11    | 784004      |           | Fork, Shifter   |
| 12    | 784057      | 1700-1711 | Rod, Shifter  |
| 13    | 784056      | Peerless  | Rod Assy., Shift (Incl. 9 thru 12)                                      |
| 14    | 784055      |           | Rod, Shifter  |
| 15    | 774057      |           | Axle, Right hand (11.923 long)  |
| 16    | 774056      |           | Axle, Left hand (14.500 long)   |
| 17    | 792005      |           | Screw, 1/4-20 x 2-1/2"  |
| 18    | 792006      |           | Lockwasher, 1/4"  |
| 19    | 778033A     |           | Gear, Ring (1.500 wide, 31 teeth)                                       |
| 20    | 786019      |           | Pin, Drive (.497 dia. x 3.357 long)                                     |
| 21    | 786027      |           | Block, Drive  |
| 22    | 778014      |           | Pinion, Bevel   |
| 23    | 776022      |           | Brake Pinion & Bushing (3.687 long)                                     |
| 24    | 792017      |           | Ring, Retainer  |
| 25    | 776014      |           | Shaft & Bearing Assy., Shifter (Incl. 26)                               |
| 26    | 780018      |           | Bearing (.437 ID x .625 OD x 500 long )                                 |
| 27    | 778037      |           | Gear, Idler   |
| 28    | 776032      |           | Shaft, Idler (.873 dia. x 5.750 long)                                   |
| 29    | 784074      |           | Stop, Shifter   |
| 30    | 788026      |           | Gasket, Case & Cover  |
| 31    | 788003      |           | Gasket, Shift lever housing   |
| 32    | 778019      |           | Gear, Shifting (20 teeth)   |
| 33    | 778020      |           | Gear Shifting (26 teeth)  |
| 34    | 778021      |           | Gear Spur (26 teeth)  |
| 35    | 786014      |           | Spacer (.885 ID x 1.125 OD x 795 long )                                 |
| 36    | 778022      |           | Gear, Spur (22 teeth)   |
| 37    | 786015      |           | Spacer (.885 ID x 1.125 OD x 1.223 lo ng)                               |
| 38    | 778023      |           | Gear, Spur (16 teeth)   |
| 39    | 776027      |           | Shaft, Input (3.990 long)   |
| 40    | 778024      |           | Spur Gear, Input shaft  |
| 41    | 780001      |           | Washer  |
| 42    | 786017      |           | Spacer (1.312 ID x 1.437 OD x .620 lo ng)                               |
| 43    | 778036      |           | Gear, Output  |
| 44    | 778041      |           | Pinion, Output (9 teeth)  |
| 45    | 788007      |           | Seal, Oil   |
| 46B   | 782030      |           | RH Axle Housing (Incl. 58A)(5.781 lon g)                                |
| 46    | 782029      |           | LH Axle Housing (Incl. 58A) (8.360 lo ng)                               |
| 47    | 772053      |           | Cover, Transaxle (Incl. 54, 54A, 57 & 58)                               |
| 48    | 770040      |           | Case, Transaxle (Incl. 54, 54A, 56 & 58)                                |
| 49    | 792007      |           | Screw, 1/4-20 x 3/4"  |
| 50    | 786026      |           | Pin, Dowel (.312 dia. x .747 long)                                      |
| 51    | 792021      |           | Screw, 5/16-18 x 3/4"   |
| 52    | 792010      |           | Plug, Pipe  |
| 54    | 780013      |           | Bearing (closed end)  |
| 54A   | 780013      |           | Bearing (closed end)  |

| Ref # | Part Number | Qty       | Description              |
|-------|-------------|-----------|--------------------------|
| 56    | 780011      |           | Bearing                  |
| 57    | 780055      |           | Bearing                  |
| 58    | 780002      |           | Bushing                  |
| 58A   | 780002      |           | Bushing                  |
| 59    | 788009      |           | Seal, Oil                |
| 60    | 788008      |           | Seal, Oil                |
| 61    | 788039      |           | Gear, Bevel              |
| 62    | 792018      |           | Ring, Retainer           |
| 63    | 780012      |           | Bearing, Thrust          |
| 64    | 780045      |           | Washer, Thrust           |
| 65    | 774036      |           | Carrier Differential     |
| 66    | 774037      |           | Carrier, Differential    |
| 67    | 780005      | 1700-1711 | Washer, Thrust           |
| 68    | 792047      | Peerless  | Key, Woodruff            |
| 69    | 790002      |           | Drum, Brake              |
| 70    | 776008      |           | Idler, Reverse           |
| 71    | 776008      |           | Shaft, Reverse idler     |
| 72    | 786008      |           | Spacer, Reverse idler    |
| 73    | 792024      |           | Set Screw, 1/4-20 x 1/4" |

Page 3 of 3