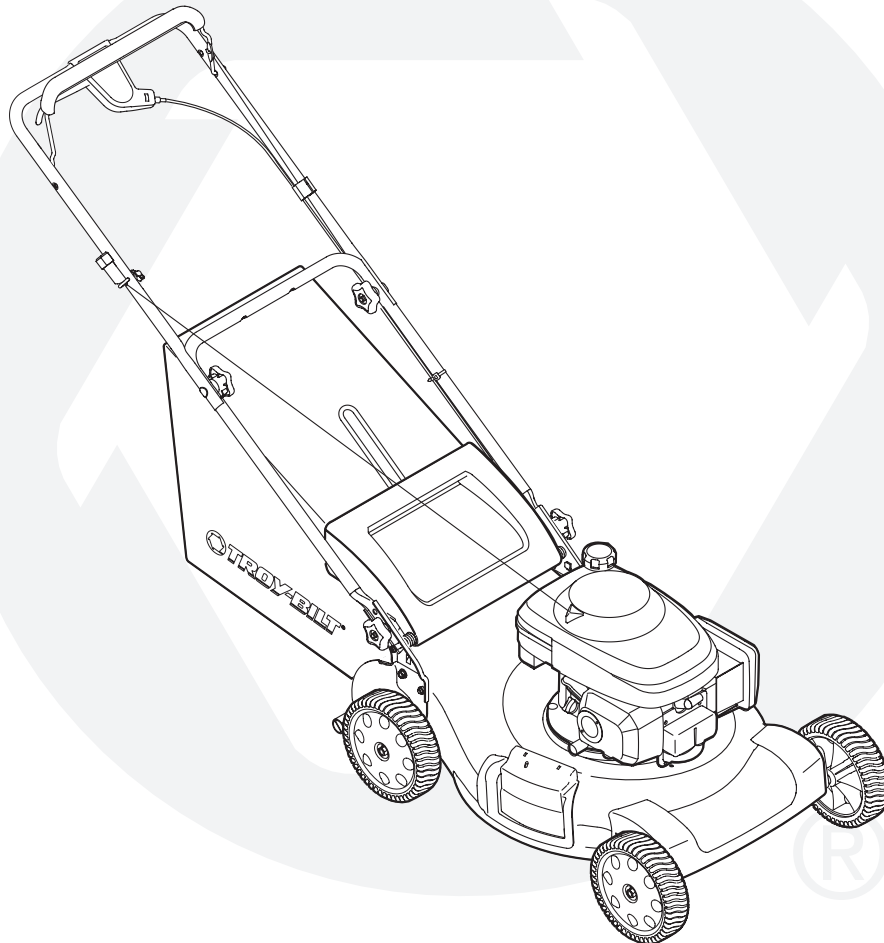


For Parts Call 606-678-9623 or 606-561-4983

3 SAFETY s !SSEMBLY s /PERATION s !DJUSTMENTS s -AINTENANCE s 4ROU

/ 0 % 2 ! 4 / 2 3 - ! . 5 ! ,



INCH 20TARY ,AWN -OWER ^ -ODE

) - 0 / 2 4 ! . 4

2 % ! \$ 3 ! & % 4 9 2 5 , % 3 ! . \$ ) . 3 4 2 5 # 4 ) / . 3 # ! 2 % & 5 , , 9 " % & / 2 % / 0 % 2 ! 4

7ARNING 4THIS UNIT IS EQUIPPED WITH AN INTERNAL COMBUSTION ENGINE A  
COVERED OR GRASS COVERED LAND UNLESS THE ENGINE S EXHAUST SYSTEM  
)F A SPARK ARRESTER IS USED IT SHOULD BE MAINTAINED IN EFFECTIVE WO  
3ECTION OF THE #ALIFORNIA 0UBLIC 2ESOURCES #ODE /THER STATES M  
FOR THE MUFFLER IS AVAILABLE THROUGH YOUR NEAREST ENGINE AUTHORIZ  
/HIO

0 2 ) . 4 % \$ ) . 5 3 ! - 4 \$ , , # 0 / " / 8 # , % 6 % , ! . \$ / ( ) /

& / 2 - . /

[www.mymowerparts.com](http://www.mymowerparts.com)

THIS OPERATOR'S MANUAL IS AN IMPORTANT PART OF YOUR NEW MOWER. PREPARE AND MAINTAIN THE UNIT FOR BEST PERFORMANCE.

## TABLE OF CONTENTS

3. LOPE 'AUGE	4. TROUBLESHOOTING	
3. SAFETY PRACTICES	3. SAFETY LABELS	
3. SETUP AND ADJUSTMENT	0. PARTS LIST	
OPERATING YOUR MOWER - OWNER	7. WARRANTY	"ACK #OVER
- MAINTAINING YOUR MOWER - OWNER		

## FINDING AND RECORDING MODEL NUMBER

BEFORE ASSEMBLING YOUR NEW EQUIPMENT, PLEASE

LOCATE THE MODEL PLATE ON THE EQUIPMENT AND COPY THE INFORMATION TO THE SAMPLE MODEL PLATE PROVIDED TO THE RIGHT. YOU CAN LOCATE THE MODEL PLATE BY STANDING AT THE OPERATING POSITION AND LOOKING DOWN AT THE REAR OF THE DECK. THIS INFORMATION WILL BE NECESSARY TO USE THE MANUFACTURER'S WEBSITE AND OBTAIN ASSISTANCE FROM THE CUSTOMER SUPPORT DEPARTMENT OR AN AUTHORIZED SERVICE DEALER.

Model Number

Serial Number

**TROY-BILT**  
www.troybilt.com

**TROY-BILT LLC**  
P. O. BOX 361131  
CLEVELAND, OH 44136  
**330-558-7220**  
**866-840-6483**

## CUSTOMER SUPPORT

PLEASE RETURN THE UNIT TO THE RETAILER FROM WHICH YOU PURCHASED IT. CONTACTING CUSTOMER SUPPORT

IF YOU HAVE DIFFICULTY ASSEMBLING THIS PRODUCT OR HAVE AN ISSUE WITH YOUR UNIT, YOU CAN SEEK HELP FROM THE EXPERTS. CHOOSE FROM THE

VISIT [www.troybilt.com](http://www.troybilt.com)

Answers

My Stuff

Login

Help

Products & Services ⓘ

All Products ▼

Search Text (optional)

Search Tips

Search

Search by

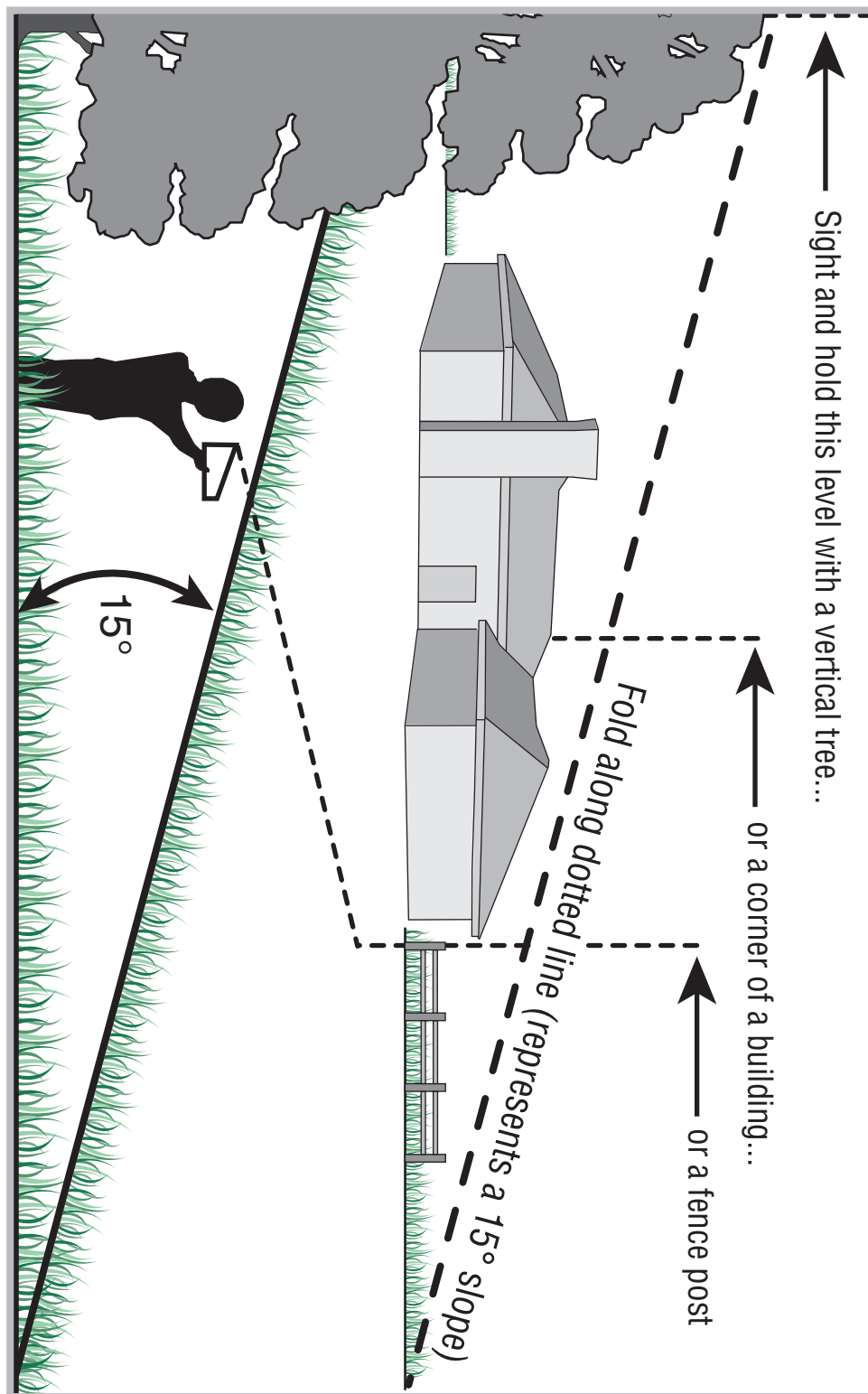
Similar Phrases ▼

Powered by RightNow

PHONE A CUSTOMER SUPPORT REPRESENTATIVE AT 1-866-840-6483

THE ENGINE MANUFACTURER IS RESPONSIBLE FOR ALL ENGINE WARRANTIES AND SERVICE. PLEASE REFER TO THE ENGINE MANUAL FOR MORE INFORMATION.

USE THIS PAGE AS A GUIDE TO DETERMINE SLOPES WHERE YOU MOW YOUR LAWN MOWER ON SUCH SLOPES



1

3 LOPE  
'AUGE



7!2.)..'

\$O NOT MOW O  
WITH A SLOPE  
OF DEGREES  
OF APPROXIMA  
FEET EVER  
FEET ! RIDIN  
COULD OVERTU  
CAUSE SERIOU  
)F OPERATING  
BEHIND MOWER  
A SLOPE IT IS  
DIFFICULT TO  
FOOTING AND  
SLIP RESULTI  
INJURY

/PERATE 2)\$).'  
MOWERS UP AN  
SLOPES NEVE  
THE FACE OF S

/PERATE  
7!,+ "%().\$  
MOWERS ACRO  
FACE OF SLOP  
UP AND DOWN

2

3 A F E

/ P E R A T I O N

0 R A C T I O N S



7!2.).'

THIS SYMBOL POINTS OUT IMPORTANT SAFETY INSTRUCTIONS WHICH NOT FOLLOWED COULD ENDANGER THE PERSON'S SAFETY AND OR THAT OF YOURSELF AND OTHERS. READ AND FOLLOW ALL INSTRUCTIONS IN THIS MANUAL BEFORE ATTEMPTING TO OPERATE THIS MACHINE. FAILURE TO COMPLY WITH THESE INSTRUCTIONS MAY RESULT IN PERSONAL INJURY. WHEN YOU SEE THIS SYMBOL

(%%\$ )43 7!2.).'

9OUR

2RESPONSIBILITY

RESTRICT THE USE OF THIS POWER MACHINE TO PERSONS WHO READ AND UNDERSTAND THE WARNINGS AND INSTRUCTIONS IN THIS MANUAL AND ON THE MACHINE



**WARNING:** %NGINE %XHAUST SOME OF ITS CON-  
NENTS CONTAIN OR EMIT CHEMICALS KNOWN  
BIRTH DEFECTS OR OTHER REPRODUCTIVE H

**DANGER:** 4HIS MACHINE WAS BUILT TO BE OPERATED AC-  
MANUAL !S WITH ANY TYPE OF POWER EQUIPMENT C  
RESULT IN SERIOUS INJURY 4HIS MACHINE IS CAPAB  
&AILURE TO OBSERVE THE FOLLOWING SAFETY INST

### #HILDREN

4RACID ACCIDENTS CAN OCCUR IF OPERATOR IS NOT ALE TO PRES  
OF CHILDREN #HILDREN ARE OFTEN ATTRACTED BY MOWER AND MOV  
ACTIVITY 4HEY DO NOT UNDERSTAND THE DANGER 4EVER ASSUME  
THAT CHILDREN WILL REMAIN WHERE YOU STAY

+EEP CHILDREN OUT OF THE MOWING AREA AND UNDER 3HILDS AND  
CARE OF A RESPONSIBLE ADULT 4THEY ARE NOT TO OPERATE MOWERS  
"E ALERT AND TURN MOWER OFF IF A CHILD ENTERS AREA  
"EFORE AND WHILE MOVING BACKWARDS 4LOOK BEHIND AND DOWN  
FOR SMALL CHILDREN

5SE EXTREME CARE WHEN APPROACHING BLADE WITH BRASS CAN  
DOORWAYS SHRUBS TREES OR OTHER OBJECTS THAT MAY OBSCUR  
YOUR VISION OF A CHILD WHO MAY RUN INTO THE MOWING OBJECT INJ  
+EEP CHILDREN AWAY FROM HOT OR RUNNING ENGINES 4THEY CAN  
SUFFER BURNS FROM A HOT MUFFLER OVER THE FOOT DURING A FALL CA

EVER ALLOW CHILDREN UNDER 12 YEARS OLD TO OPERATE MOWER  
MOWER #HILDREN 12 YEARS OLD AND OVER SHOULD READ AND  
UNDERSTAND OPERATION INSTRUCTIONS AND SAFETY RULES IN TH  
MANUAL AND SHOULD BE TRAINED AND SUPERVISED BY A PARENT  
WALKING )IF YOU MUST BACK THE

### GENERAL /PERATION

2READ THE OPERATOR S MANUAL CAREFULLY IN ITS ENTIRETY BEF  
ATTEMPTING TO ASSEMBLE THIS MACHINE 2READ FROM UNDERSTAND F  
AND FOLLOW ALL INSTRUCTIONS ON THE MACHINE AND IN THE BAL  
2READ AND FOLLOW ALL INSTRUCTIONS BEFORE OPERATION CE COMPLETE MOWER BACK WLOW  
INSTRUCTIONS IN THIS MAN  
UAL BEFORE ATTEMPTING TO  
OPERATE THIS MACHINE

4THIS MACHINE IS A PRECISION ALCOHOL OF ORDERED EQUIPMENT  
OPERATING IT +EEP THIS MANUAL IN A SAFE PLACE IT IS THE FAST NEED  
AND REGULAR REFERENCE AND FOR PROPER REPAIRS

4THIS MACHINE IS A PRECISION ALCOHOL OF ORDERED EQUIPMENT  
OPERATING IT +EEP THIS MANUAL IN A SAFE PLACE IT IS THE FAST NEED  
AND REGULAR REFERENCE AND FOR PROPER REPAIRS

4THIS MACHINE IS A PRECISION ALCOHOL OF ORDERED EQUIPMENT  
OPERATING IT +EEP THIS MANUAL IN A SAFE PLACE IT IS THE FAST NEED  
AND REGULAR REFERENCE AND FOR PROPER REPAIRS

4THIS MACHINE IS A PRECISION ALCOHOL OF ORDERED EQUIPMENT  
OPERATING IT +EEP THIS MANUAL IN A SAFE PLACE IT IS THE FAST NEED  
AND REGULAR REFERENCE AND FOR PROPER REPAIRS

4THIS MACHINE IS A PRECISION ALCOHOL OF ORDERED EQUIPMENT  
OPERATING IT +EEP THIS MANUAL IN A SAFE PLACE IT IS THE FAST NEED  
AND REGULAR REFERENCE AND FOR PROPER REPAIRS

4THIS MACHINE IS A PRECISION ALCOHOL OF ORDERED EQUIPMENT  
OPERATING IT +EEP THIS MANUAL IN A SAFE PLACE IT IS THE FAST NEED  
AND REGULAR REFERENCE AND FOR PROPER REPAIRS

4THIS MACHINE IS A PRECISION ALCOHOL OF ORDERED EQUIPMENT  
OPERATING IT +EEP THIS MANUAL IN A SAFE PLACE IT IS THE FAST NEED  
AND REGULAR REFERENCE AND FOR PROPER REPAIRS





ALTO IN A POORLY V  
HILLY MONOXIDE AN

OR INSPECTING MA  
4. THE SYMBOLS  
AGAINST THE EN  
INSTRUCTIONS

AND YOURSELF

2. **LEAD AND FOLLOW**  
CAN CUT TRAP THE  
DINSTER USE FVONS  
BEW S B F H O R E B A  
OTTON  
ODD DATE TILG

VICES RAISE THE  
& FAILURE TO CO  
THE SEPTINTE  
D GROUND AGAINST  
RESULT IN REP  
PHENYOUNG SE  
SYMBOL CUTTING HE

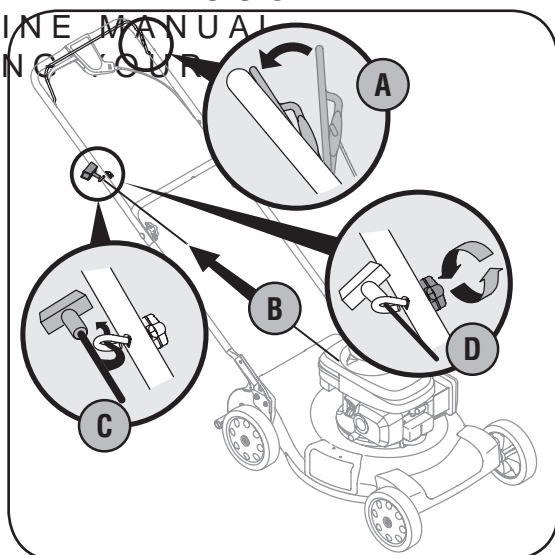
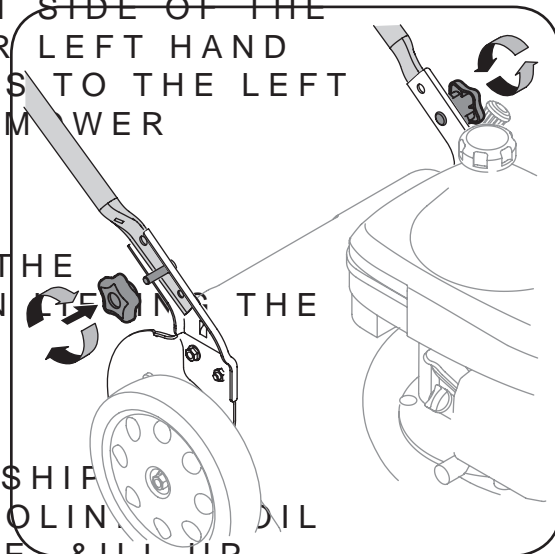
AND DAMAGE WHICH  
ANS TO BE THROWN  
CHECKS ON COURT AN

RESPONSIBILITY

UNDERSTAND  
NECESSARY  
FOLLOW THE  
AND INSTRUCT  
IN THIS MAN  
AND ON THE M

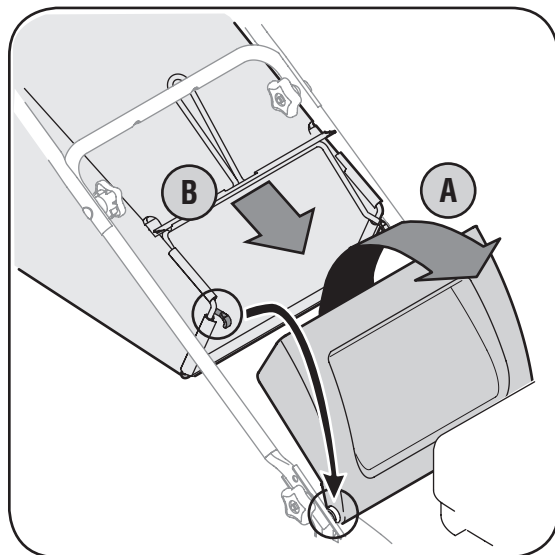


THIS UNIT IS SHIPPED WITHOUT GASOLINE. OIL IN THE ENGINE WILL RUN ON GASOLINE AND OIL AS INSTRUCTED IN THE ACCOMPANYING ENGINE MANUAL BEFORE OPERATING YOUR MOWER.



0ULL RECOIL STARTED

AND PLACE GRASS CATCHER ON  
OF DISCHARGE BRACKET SO THA  
CATCHER



R. GUHRE U G. H. IFOTPEI SCHE DER GENDOTOGHAT



**WARNING:** Never operate mower unless the hooks on the grass catcher are firmly seated on the pivot rod and the rear discharge door rests firmly against top of the grass catcher.

FOLLOW STEPS BELOW TO INSTALL THE MULCHING BAFFLE

A LIFT THE REAR DISCHARGE DOOR AND LIFT THE GRASS CATCHER UP AND

B INSERT THE MULCHING BAFFLE AS SHOWN IN FIGURE 4 AND RELEASE THE

40 CONVERT TO SIDE DISCHARGE MAKE SURE GRASS CATCHER IS OFF OF A

A /N THE SIDE OF THE MOWER LIFT THE MULCHING PLUG

B SLIDE TWO HOOKS ON SIDE DISCHARGE CHUTE UNDER MULCHING PLUG SO NOT REMOVE SIDE MULCHING PLUG AT ANY TIME EVEN

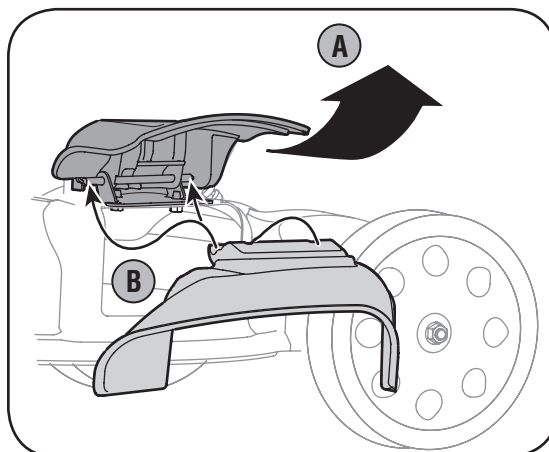
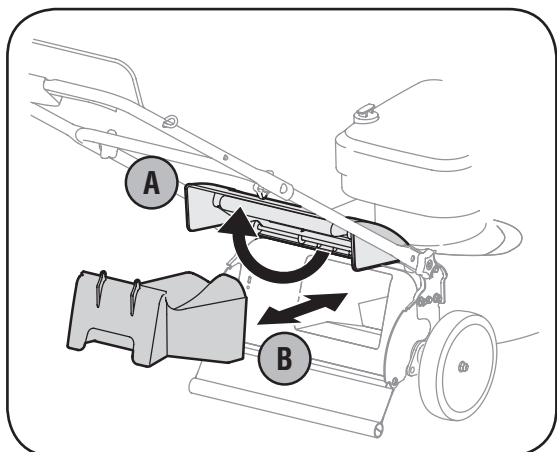


FIGURE 4 THE MULCHING BAFFLE FIGURE 5 INSTALLING THE SIDE DISCHARGE CHUTE

## ADJUSTMENTS

### CUTTING HEIGHT

THE CUTTING HEIGHT ADJUSTMENT LEVER IS LOCATED ABOVE THE REAR LEFT

A PULL THE LEVER OUT AND AWAY FROM THE MOWER

B MOVE THE LEVER FORWARD OR BACK FOR DESIRED CUTTING HEIGHT

C RELEASE LEVER TOWARDS MOWER DECK

### DRIVE CONTROL

THE ADJUSTMENT WHEEL IS LOCATED IN THE DRIVE CONTROL HANDLE HOUSING. YOU WILL NEED TO ADJUST THE DRIVE CONTROL IF THE MOWER DOES NOT PROCEED OR IF THE MOWER S WHEELS HESITATE WITH THE DRIVE CONTROL ENGAGED. TURN THE ADJUSTMENT WHEEL CLOCKWISE TO TIGHTEN THE CABLE OR COUNTERCLOCKWISE TO LOOSEN IT.

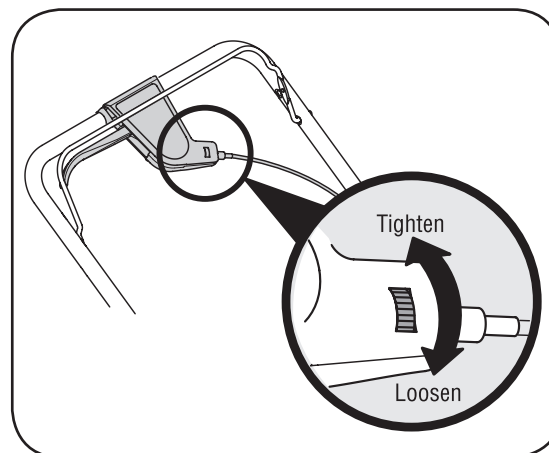
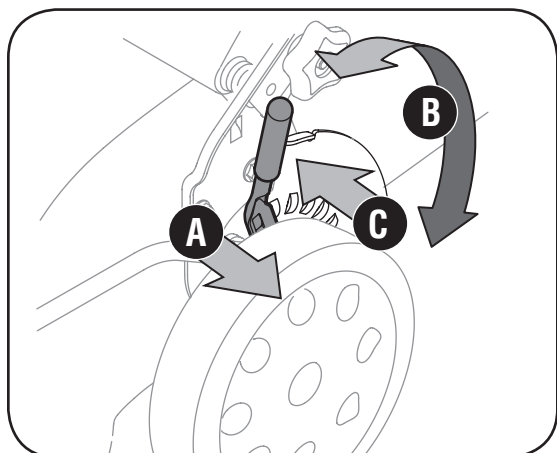


FIGURE 6 THE CUTTING HEIGHT ADJUSTMENT LEVER FIGURE 7 THE DRIVE CONTROL ADJUSTMENT WHEEL ON THE DRIVE CONTROL HANDLE

3

SETUP

ADJUSTMENTS

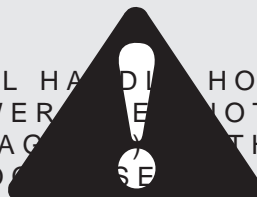


### CUTTING HEIGHT

FOR ROUGH OR UNLEVEL LAWNS MOVE THE CUTTING HEIGHT ADJUSTMENT LEVER TO A HIGHER POSITION TO HELP PREVENT THE GRASS

### DRIVE CONTROL

THE DRIVE CONTROL CHUTE & FOR SOME PEOPLE THE DRIVE CONTROL BE IN A COMFORTABLE POSITION. YOU CAN ADJUST THE HANDLE BY THE ADJUSTMENT



7!2.) .'

Never operate mower unless the hooks on the grass catcher are firmly seated on the pivot rod and the rear discharge door rests firmly against top of the grass catcher.

4

OPERATING  
YOUR LAWN MOWER



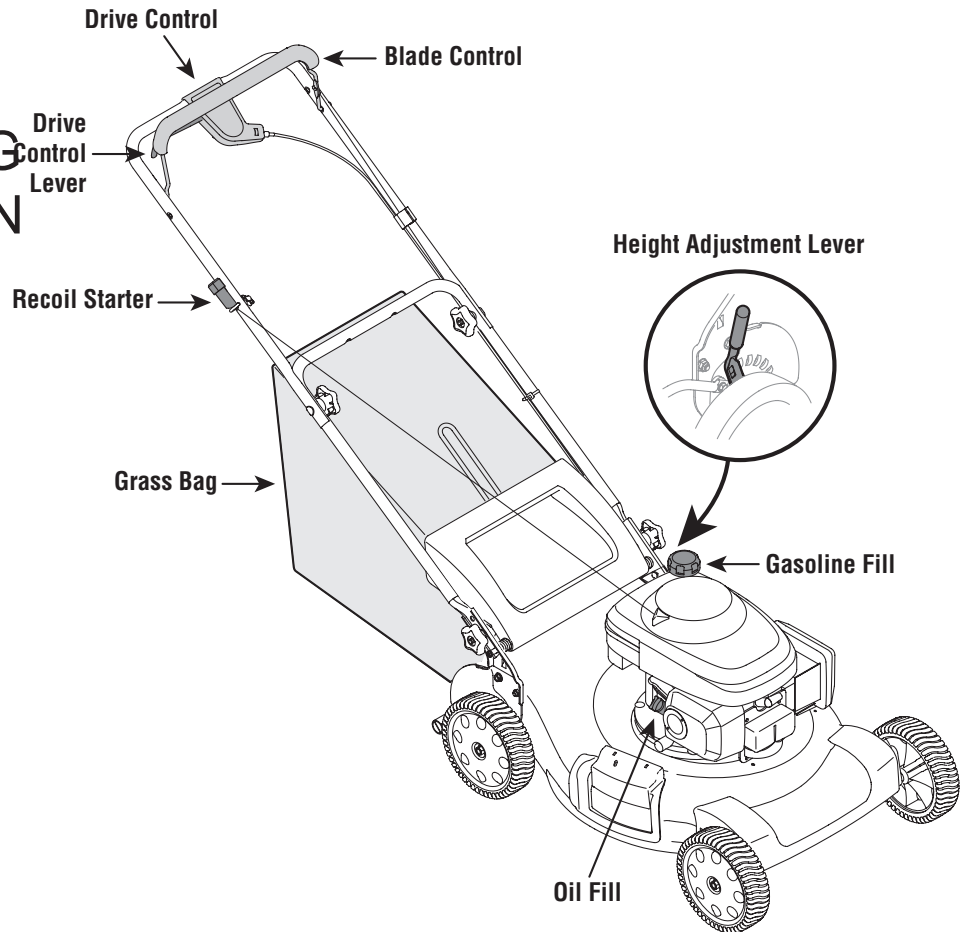
7!2.).'

The blade control is a safety device. Never attempt to bypass its operations.

Use extreme care when handling gasoline. Gasoline is extremely flammable and the vapors are explosive. **Never** fuel the machine indoors or while the engine is hot or running. Extinguish cigarettes, cigars, pipes, and other sources of ignition.

Keep hands and feet away from the cutting deck. Refer to warning label on the unit.

+NOW YOUR LAWN MOWER



FIGURE

THE MAJOR PARTS ON THE LAWN MOWER

Now that you have set up your lawn mower for operation, read this section to become acquainted with its controls and features. This knowledge will allow you to use your new equipment to its fullest potential.

## BLADE CONTROL

The blade control is attached to the upper handle. Depress and squeeze it against the upper handle to operate the unit. Release it to stop engine and blade.



**WARNING:** This blade control is a safety device. Do not bypass its operations.

## DRIVE CONTROL LEVER

The drive control is located on the upper handle. Squeeze the drive control lever to engage the drive system. Release it to disengage the drive system. To slow down when approaching an obstacle, making a turn, or stopping, release the lever.

## CUTTING HEIGHT ADJUSTMENT

The cutting height adjustment lever is located above the left rear wheel. To adjust the cutting height, refer to the Adjustment Section.

## RECOIL STARTER

The recoil starter is attached to the right upper handle. Stand behind the unit and pull the recoil starter rope to start the unit.

## FUEL AND OIL FILL

CHECK OIL LEVEL AND ADD OIL AS NEEDED. SEE FIGURE 5 FOR FILLING INSTRUCTIONS.

SERVICE THE ENGINE WITH GASOLINE. SEE FIGURE 6 FOR FILLING INSTRUCTIONS.



**WARNING:** Use extreme care when handling gasoline. Gasoline is extremely flammable and the vapors are explosive. **Never** fuel the machine indoors or while the engine is hot or running. Extinguish cigarettes, cigars, pipes, and other sources of ignition.





**WARNING:** The operation of any lawn mower can result in foreign objects being thrown into the eyes which can damage your eyes severely. Always wear safety glasses while operating the mower or while performing any adjustments or repairs on it.

### 3 TARTING %NGINE



**WARNING:** Be sure no one other than the operator is standing near the lawn mower while starting engine or operating mower. Never run engine indoors or in enclosed, poorly ventilated areas. Engine exhaust contains carbon monoxide, an odorless and deadly gas. Keep hands, feet, hair and loose clothing away from any moving parts on engine and lawn mower.

**NOTE:** Refer to the engine manual for help with engine related operations.

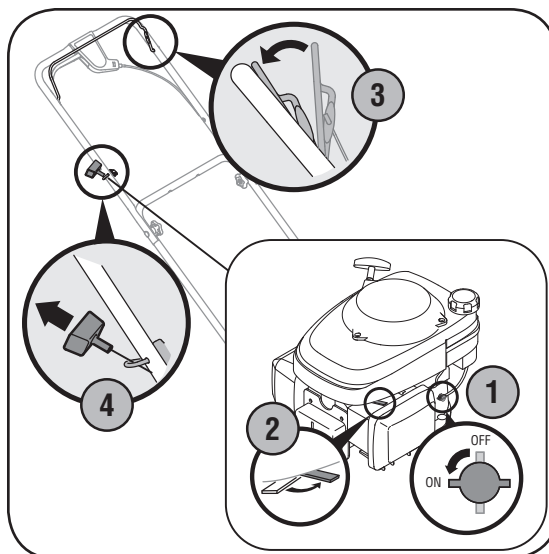


FIGURE 3 TARTING THE MOWER



**WARNING:** If you strike a foreign object, stop the engine. Remove wire from the spark plug, thoroughly inspect mower for any damage, and repair damage before restarting and operating. Extensive vibration of mower during operation is an indication of damage. The unit should be promptly inspected and repaired.



7!2.) .'

The operation of any lawn mower can result in foreign objects

being thrown into the eyes, which can damage your eyes

severely. Always wear safety glasses while

operating the mower, or while performing any adjustments or

repairs on it.

DO NOT CUT WET GRASS. Be sure no one other than the operator is standing near the mower while starting engine or operating mower. Never run engine indoors or in enclosed, poorly ventilated areas. Engine exhaust contains carbon monoxide, an odorless and deadly gas. Keep hands, feet, hair and loose clothing away from any moving parts on engine and lawn mower.

5 SING 'RASS #ATCHER

YOU CAN USE THE GRASS CATCHER IF THE GRASS HAS BEEN AL

FOUR INCHES MULCHING IS GRASS CATCHER TO BAG CLIPPINGS

ATTACH GRASS CATCHER FOLLOWING INSTRUCTIONS

SECTION /PERATE MOWER TIL GRASS CATCHER IS

STOP ENGINE COMPLETELY BEFORE REMOVING THE

CONTROL -AKE SURE THAT THE GRASS CATCHER IS

COMPLETELY STOP WIRE OR OTHER

DISCHARGE DROPPED AND SERIOUS PERSONAL INJURY TO THE

GRASS CLIPPINGS AND REIN TO THE

### 3 TOPPING %NGINE

2 RELEASE BLADE CONTROL TO STOP THE ENGINE. DISCONNECT SPARK PLUG WIRE FROM SPARK PLUG AND



**WARNING:** Wait for the blade to stop completely before performing any work on the mower or to remove the grass catcher.

### 5 SING 9OUR ,AWN -OWER



**WARNING:** Never operate your mower without either the rear door or the entire grass catcher assembly firmly secured.

"E SURE LAWN IS CLEAR OF STONES AND OTHER OBJECTS WHICH COULD DAMAGE LAWN MOWER OR ENGINE. SUCH OBJECTS COULD BE ACCIDENTALLY THROWN BY THE MOWER IN ANY DIRECTION AND CAUSE SERIOUS PERSONAL INJURY TO THE OPERATOR AND OTHERS

5

# MAINTAINING YOUR LAWN MOWER



7!2.) .'

Always stop engine, disconnect spark plug, and ground against engine before cleaning, lubricating or doing any kind of maintenance on your machine.



)-0/24! .4 \$O NOT  
USE A PRESSURE WASH-  
ER OR GARDEN HOSE TO  
CLEAN YOUR UNIT. THIS  
CAN CAUSE DAMAGE TO  
ELECTRIC COMPONENTS  
THAT HAVE BEEN SUB-  
JECTED TO WEAR. DO NOT  
USE DETERGENT OR  
WATER. THIS WILL  
RESULT IN DAMAGE  
AND REDUCE SER-

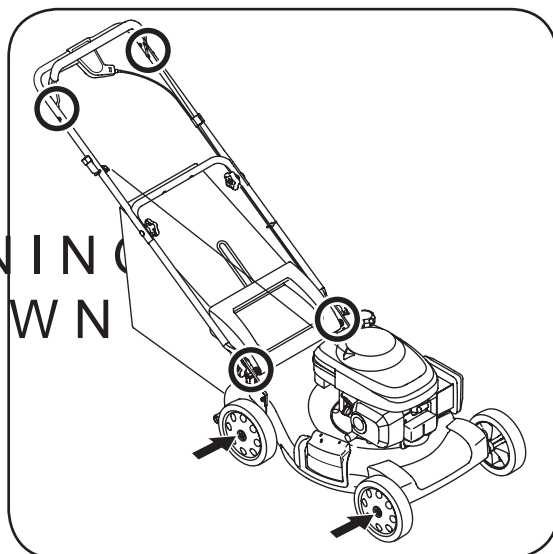


FIGURE 1 LUBRICATION AREAS

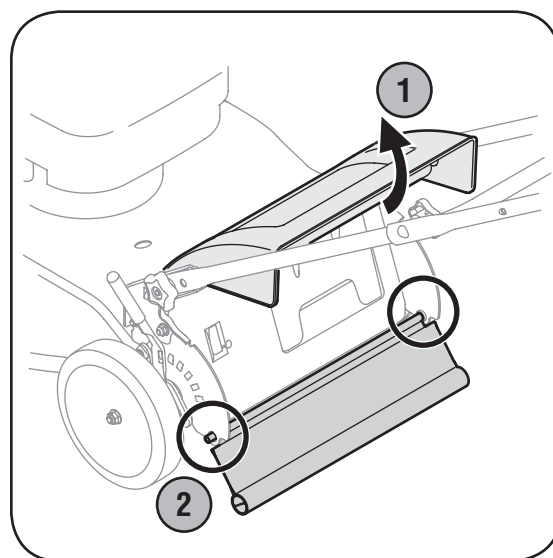


FIGURE 2 REPLACING THE REAR FLAP

NOTE: Refer to the engine manual for detailed instructions.

MAINTAIN OIL LEVEL

CAUSE DAMAGE TO THE ELECTRIC COMPONENTS THAT HAVE BEEN SUBJECTED TO WEAR. DO NOT USE DETERGENT OR WATER. THIS WILL RESULT IN DAMAGE AND REDUCE SER-

ENGINE WARRANTY

ALL ADJUSTMENTS SHOULD BE CHECKED AT LEAST ONCE EACH SEASON

PERIODICALLY CHECK ALL FASTENERS AND MAKE SURE THEY ARE TIGHT



WARNING: Always stop engine, disconnect spark plug, and ground against engine before servicing the unit.

## LUBRICATION

LUBRICATE PIVOT POINTS ON THE MOWER ONCE A SEASON WITH LIGHT OIL TO OPERATE FREELY IN BOTH DIRECTIONS

LUBRICATE THE WHEELS AT LEAST ONCE A SEASON WITH LIGHT OIL OR MOTOR OIL. FOR REASON, LUBRICATE SURFACE OF THE WHEEL WITH LIGHT OIL

LUBRICATE THE TORSION SPRING ON THE DISCHARGE DOOR PERIODICALLY TO PREVENT RUST. FIGURE 1

THE TRANSMISSION IS PRE-LUBRICATED AT THE FACTORY AND DOES NOT REQUIRE LUBRICATION

FOLLOW THE ACCOMPANYING LUBRICATION SCHEDULE AND INSTRUCTIONS

## SAFETY

DISCONNECT SPARK PLUG WIRE FROM SPARK PLUG OR PLACE A PIECE OF PLASTIC OVER THE SPARK PLUG. TIP MOWER SO THAT IT RESTS ON ITS SIDE WITH THE AIR CLEANER FACING UP



WARNING: Never tip the mower more than 90° in any direction and do not leave the mower tipped for any length of time. Oil can drain into the upper part of the engine causing a starting problem.

SCRAPE AND CLEAN THE UNDERBELLY OF THE MOWER WITH A SUITABLE TOOL. DO NOT SPRAY

TIP THE MOWER BACK ON ITS WHEELS. IF YOU HAD PUT PLASTIC UNDER THE MOWER, BE SURE TO REMOVE IT NOW

## ENGINE CARE

NOTE: Refer to the engine manual for detailed instructions.

MAINTAIN OIL LEVEL

SERVICE AIR CLEANER EVERY 25 HOURS OR WHEN OPERATING IN DUSTY CONDITIONS. CLEAN OR REPLACE FILTER AS NECESSARY

LEAN ENGINE REGULARLY WITH CLEAN AIR. DO NOT OVER-ENRICH MIXTURE. PROPER AIR CIRCULATION IS ESSENTIAL FOR PROPER COMBUSTION. REMOVE DEBRIS FROM MOWER HOUSING

REPLACE REAR FLAP

1. LIFT UP REAR DOOR

2. RELEASE TABS FROM THE HOLE IN THE REAR FLAP

3. SLIDE REAR FLAP INTO PLACE

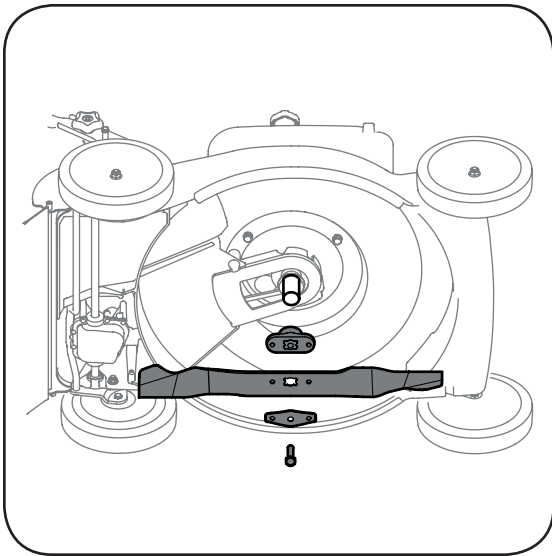
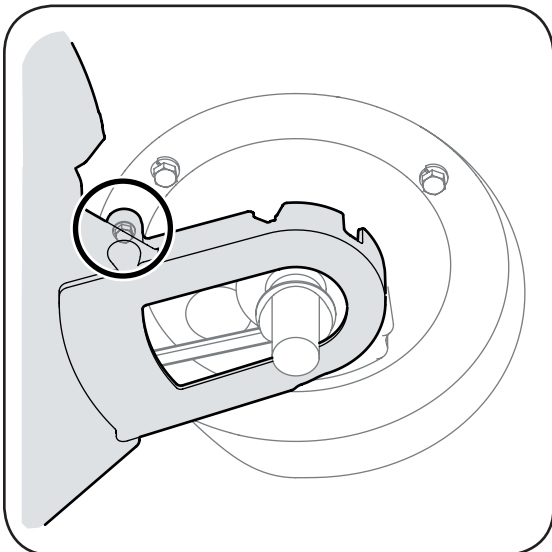


FIGURE 2 REMOVE BOLT BELL  
GAIN ACCESS TO THE BLADE



## FIGURE 1 LOOSEN THE SCREW

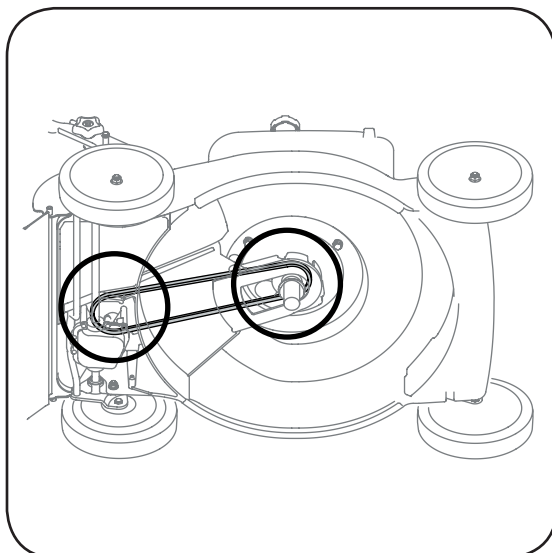


FIGURE 2 REMOVE BELT FROM TRANSMISSION AND ENGINE PULLEY

## " LADE # ARE



**WARNING:** When removing cutting blade for sharpening or replacement, protect your hands with a pair of heavy gloves or use a heavy rag to hold blade.

\$ISCONNECT SPARK PLUG WIRE FROM SPARK  
MOWER ON ITS SIDE MAKING SURE THAT THE A  
THE CARBURETOR ARE UP - AINTAIN

2 REMOVE BOLT BLADE BELL SUPPORT BLADE  
ADAPTER FROM THE ENGINE CRANKSHAFT, AND

**NOTE** 7 THEN REMOVING THE BLADE BLADE ADAPTER  
CAREFUL NOT TO REMOVE OR LOSE PARTS ABOVE  
WITH THE ENGINE PULLEY

THE BLADE CAN BE SHARPENED WITH A FILE OR  
GRINDING WHEEL. DO NOT ATTEMPT TO SHARPEN THE  
TOP OF THE BLADE ON THE MOWER. TO PREVENT HAPPENING  
ORIGINAL ANGLE OF GRIND. "RINS" GRINDING ED  
KEEP BLADE BALANCED

2 REMOVE BLADE FROM THE ADJUSTMENT TEST  
"ALANCE THE BLADE ON A ROUND SHAFT, SCREW  
CHECK 2 REMOVE METAL FROM THE HEAVY SIDE  
BALANCES EVENLY



**WARNING:** An unbalanced blade will cause excessive vibration when rotating at high speeds. It may cause damage to mower, and could break causing personal injury.

LUBRICATE THE ENGINE CRANKS WITH OIL. SLIDING THE BLADE ADAPTER ONTO THE ENGINE CRANKSHAFT PLATE ON THE ADAPTER SUCH THAT THE SIDE OF THE "HOTTOMV" OR WITH PART NUMBER 0685 IS THE MOWER IS IN THE OPERATING POSITION. THE BLADE IS ALIGNED AND SEAT THE BLADE ADAPTER INTO THE HOLE ON THE DECK. HOLD THE BLADE ADAPTER ONTO THE DECK.

When sliding the blade around it, protect your hands with a pair of heavy gloves or use a heavy rag to hold the blade.

2. PLACE BLADE BELL SUPPORT ON THE BLADE  
ON THE BLADE BELL SUPPORT WITH SHIM HOLES  
2. PLACE HEX BOLT AND TIGHTEN HEX BOLT TO  
IN LBS MIN IN LBS MAX. **An Unbalanced Blade  
will cause excessive**

40 ENSURE SAFE OPERATION OF YOUR MOWER  
CHECK THE BLADE BOLT FOR CORRECT TORQUE

## "ELT #ARE

\$ISCONNECT THE SPARK PLUG WIRE AND GRO	break causing per	
THE ENGINE	sonal injury	

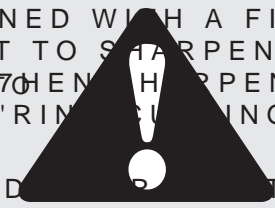
5. DRAIN THE FUEL TANK OR PLACE A PIECE OF THE CAP TO PREVENT GASOLINE LEAKAGE

41P MOWER ON ITS SIDE AIR CLEANER SIDE C  
2EMOVE BLADE ADAPTER AND RELATED HARD  
INSTRUCTED UNDER h"LADE #AREv ABOVE

WOODEN SELF TAPPING SCREW THAT SECURES THE DECK & FIGURE

5

SURE THAT THE A  
-AIN TAIN  
SUPPORT BLADE  
CRANKSHAFT, & IG  
90UR AV  
OWER  
DE BLADE ADAPTE



**When removing the cutting blade for sharpening or replacement or**

When sliding the blade  
around it, protect  
your hands with a  
pair of heavy gloves  
or use a heavy rag to  
hold the blade.

An unbalanced blade will cause excessive vibration when rotating at high speeds. It may cause damage to mower, and could break causing personal injury.

5

## MAINTAINING YOUR LAWN MOWER



1.4% THEN REPLACE THE BELT CHECK THAT THE  
NEWLY INSTALLED BELT IS  
SEATED CORRECTLY AND IS  
RIDING SMOOTHLY ON THE  
ENGINE PULLEY

WORKING FROM THE REAR OF THE LAWN MOWER TO CAREFULLY  
REMOVE BELT FROM TRANSMISSION PULLEY. STEPS SHOULD  
BE TAKEN SINCE BELT IS OFF TRANSMISSION PULLEY TO PREVENT  
DECK BAFFLE TO ACCESS ENGINE AND DECK BAFFLE TO PREVENT  
OFF THIS PULLEY AND OUT FROM UNDER THE DECK BAFFLE.

2. DO NOT RECOMMEND THE USE OF A NEW BELT. WORKING BETWEEN THE DECK BAFFLE  
AND BAFFLE FIRST AROUND THE TRANSMISSION PULLEY AND  
THEN THE ENGINE PULLEY. REFER TO ENGINE MANUAL FOR  
STORAGE INSTRUCTIONS.

NOTE: MAKE CERTAIN THAT BELT IS SEATED CORRECTLY AND  
THAT IT IS RIDING SMOOTHLY ON THE ENGINE PULLEY AND IS  
PINCHED BETWEEN THE LOWER AND UPPER PULLEY BLADES.

4. TIGHTEN SELF TAPPING SCREW SECURING DECK BAFFLE  
LOOSENED EARLIER. THEN STORING ANY TYPE OF POW

2. REPLACE BLADE BLADE ADAPTER AND ASSOCIATED HARDWARE  
HARDWARE & FOLLOW INSTRUCTIONS IN "LADE #1" SECTION  
OF THE EQUIPMENT ESPECIALLY CA

4. IF MOWER BACK ONTO ITS WHEELS AND REMOVE PIECE OF  
PLASTIC FROM UNDER GAS CAP IF APPLICABLE



For Parts Call 606-678-9623 or 606-561-4983

---

. / 4 % 3

6

## 4TROUBLE 3SHOOTING



For repairs beyond  
the minor adjustments  
listed here, contact  
an authorized service  
dealer.

PROBLEM	CAUSE	REMEDY
ENGINE FAILS TO START	1. SPARK PLUG WIRE DISCONNECTED 2. FUEL TANK EMPTY OR STALE FUEL 3. ENGINE NOT PRIMED 4. FAULTY SPARK PLUG 5. "LOCKED" FUEL LINE 6. ENGINE FLOODED	1. RECONNECT WIRE TO SPARK PLUG 2. FILL TANK WITH CLEAN FRESH GASOLINE 3. PRIME ENGINE AS INSTRUCTED IN OWNER'S MANUAL 4. LEAN ADJUST GAP OR REPLACE SPARK PLUG 5. LEAN FUEL LINE 6. WAIT A FEW MINUTES TO ALLOW EXCESS FUEL TO EVAPORATE THEN REPRIME
ENGINE RUNS BUT WILL NOT CUT	1. SPARK PLUG WIRE LOOSE 2. "LOCKED" FUEL LINE OR STALE FUEL 3. AIR FLOW RESTRICTED 4. CARBURETOR OUT OF ADJUSTMENT	1. RECONNECT AND TIGHTEN WIRE 2. FILL FUEL TANK WITH CLEAN FRESH GASOLINE 3. CLEAN AIR FILTER 4. REFER TO ENGINE MANUAL FOR CARBURETOR ADJUSTMENT
ENGINE OVERHEATS	1. OIL LEVEL LOW 2. AIR FLOW RESTRICTED 3. CARBURETOR NOT ADJUSTED PROPERLY	1. FILL CRANKCASE WITH OIL TO CORRECT LEVEL 2. REMOVE BLOWER HOUSING COVER AND CLEAN FANS 3. REFER TO ENGINE MANUAL FOR CARBURETOR ADJUSTMENT
ENGINE SKIPS OR HESITATES AT HIGH SPEED	1. SPARK PLUG GAP TOO CLOSE 2. CARBURETOR IDLE MIXTURE TOO RICH 3. IMPROPERLY SET	1. ADJUST GAP TO .030 INCH 2. REFER TO ENGINE MANUAL FOR IDLE MIXTURE ADJUSTMENT
ENGINE IDLES POORLY	1. SPARK PLUG FOULED 2. GAP TOO WIDE 3. CARBURETOR IMPROPERLY ADJUSTED 4. DIRTY AIR CLEANER	1. REPLACE SPARK PLUG 2. ADJUST GAP TO .030 INCH 3. REFER TO ENGINE MANUAL FOR CARBURETOR ADJUSTMENT 4. CLEAN OR REPLACE AIR CLEANER
EXCESSIVE VIBRATION	1. CUTTING BLADE LOOSE 2. BENT CUTTING BLADE	1. TIGHTEN BLADE AND ADJUST TO CORRECT HEIGHT 2. SEE AN AUTHORIZED SERVICE DEALER
MOWER WILL NOT CUT GRASS OR MULCH GRASS IF EQUIPPED	1. EXCESSIVELY HIGH GRASS 2. DULL BLADE	1. DO NOT MOW WHEN GRASS IS TOO HIGH 2. WAIT UNTIL LATER TO CUT 3. MOW ONCE AT A HIGH CUTTING HEIGHT THEN MOW AGAIN AT DESIRED CUTTING HEIGHT 4. SHARPEN OR REPLACE BLADE
UNEVEN CUT	1. WHEELS NOT POSITIONED CORRECTLY 2. DULL BLADE	1. CHECK ALL FOUR WHEELS FOR CORRECT HEIGHT POSITION 2. SHARPEN OR REPLACE BLADE
MOWER WILL NOT SELF PROPEL	1. DRIVE BELT NOT INSTALLED PROPERLY 2. DEBRIS CLOGGING DRIVE PULLEY 3. DAMAGED OR WORN BELT	1. CHECK BELT FOR PROPER INSTALLATION AND MOVEMENT 2. CLEAN DRIVE PULLEY AND BELT 3. REPLACE BELT IF DAMAGED OR WORN

# SAFETY LABELS & SOUND / IN YOUR OWN

TO REDUCE THE RISK OF INJURY, DO NOT OPERATE UNLESS DISCHARGE COVER OR GRASS CATCHER IS IN ITS PROPER PLACE. IF DAMAGED, REPLACE IMMEDIATELY.

## DANGER

KEEP HANDS and FEET AWAY



	<b>! DANGER</b> <b>AVOID SERIOUS INJURY OR DEATH</b> <ul style="list-style-type: none"><li>• KEEP HANDS AND FEET AWAY FROM ROTATING PARTS.</li><li>• REMOVE OBJECTS THAT CAN BE THROWN BY THE BLADE IN ANY DIRECTION. WEAR SAFETY GLASSES.</li><li>• DO NOT MOW WHEN CHILDREN OR OTHERS ARE AROUND.</li><li>• USE EXTRA CAUTION ON SLOPES. DO NOT MOW SLOPES GREATER THAN 15°. MOW ACROSS NEVER UP AND DOWN. NEVER PULL MOWER CLOSE TO YOUR FEET. LOOK DOWN AND BEHIND BEFORE AND WHILE MOVING BACKWARDS.</li></ul>	
<small>READ OPERATOR'S MANUAL. KEEP SAFETY DEVICES (BLADE CONTROL, TRAILING SHIELD, DISCHARGE COVER, ETC.) IN PLACE AND WORKING. IF DAMAGED, REPLACE IMMEDIATELY.</small>		

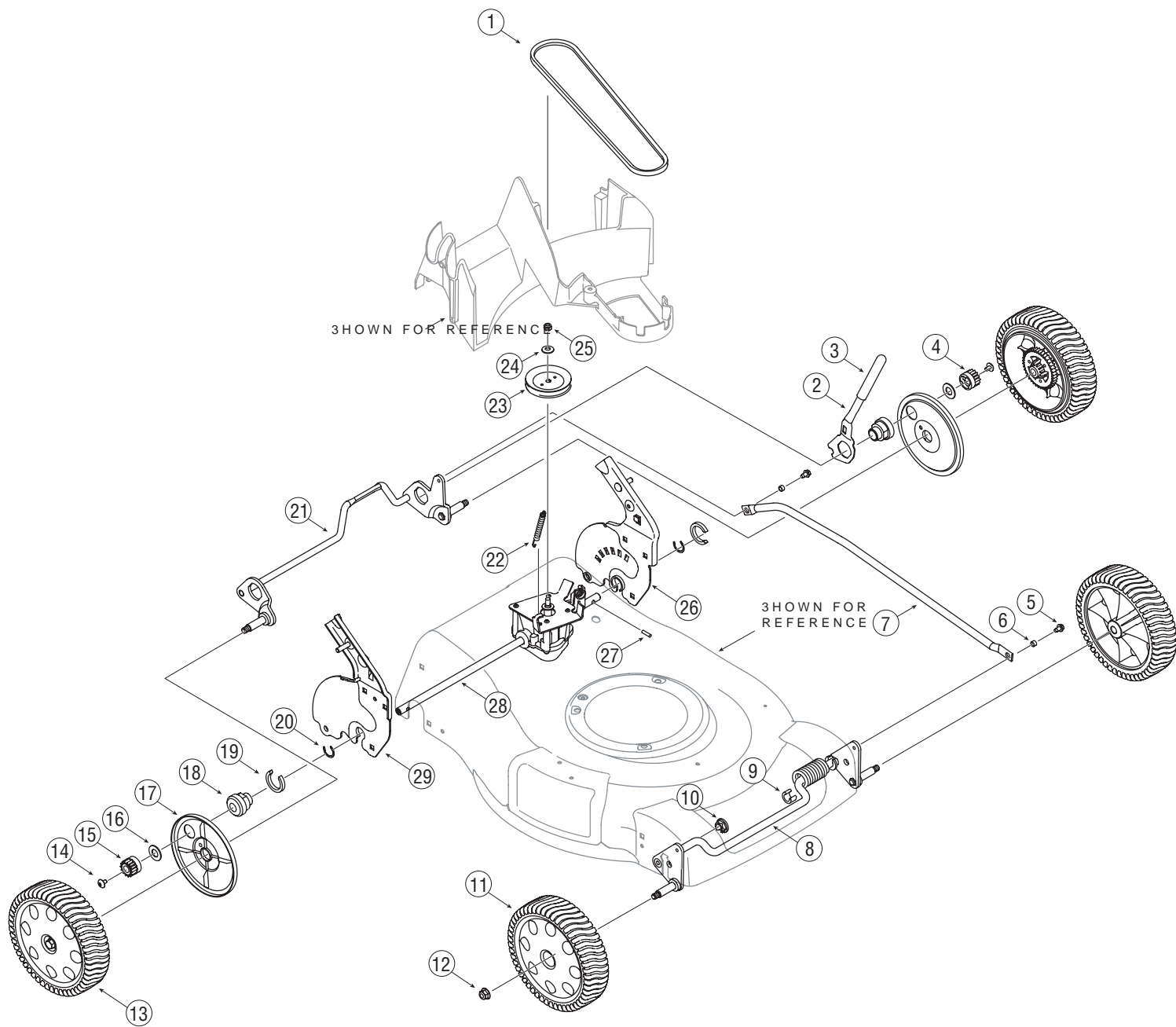
# 7

## SAFETY LABELS



7!2.) .'

DO NOT remove safety (or any) labels from mower for any reason.





		6 "ELT	
		3PRING ,EVER	
		&OAM 'RIP	
		!3PUR 'EAR 4 , (	
		44 3CREW X	
		!3PACER	
		#ROSS "RACKET	
		&RONT "RACKET !SSEMBLY	
		#LIP 3PACER	
		"3PLIT (EX &LANGE "EARING	
		"&RONT 7HEEL	
		&LANGE ,OCK .UT	
		#2EAR 7HEEL	
		3CREW X	
		!3PUR 'EAR 4 2 (	
		&LAT 7ASHER	
		! 7HEEL \$UST #OVER	
		#RANSMISSION "EARING 3UPPORT	
		#LIP 3PACER	
		2ETAINING 2ING	
		2EAR "RACKET !SSEMBLY	
		%XTENSION 3PRING	
		!0ULLEY /\$	
		"ELL 7ASHER X X	
		(EX ,OCK .UT	
		(ANDLE "RACKET !SSEMBLY , (	
		\$OWEL 0IN	
		4RANSMISSION !SSEMBLY	
		(ANDLE "RACKET !SSEMBLY 2 (	

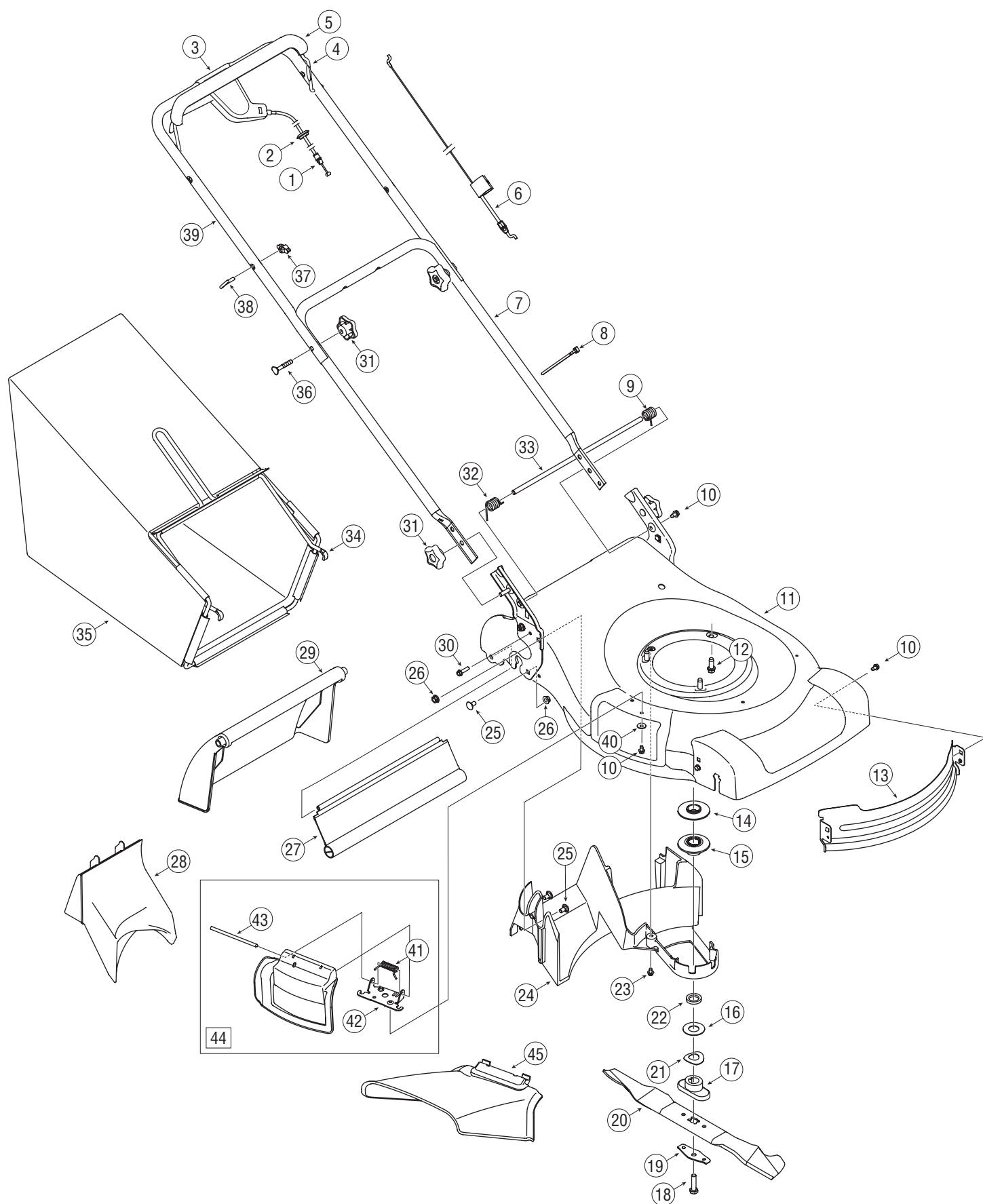


0ARTS



To order replacement parts, call  
1-800-648-6776  
or visit  
[www.troybilt.com](http://www.troybilt.com)

**IMPORTANT:** For a proper working machine, use Factory Approved Parts. V-BELTS are specially designed to engage and disengage safely. A substitute (non-OEM) V-Belt can be dangerous by not disengaging completely.



	!\$RIVE #ABLE
	2UBBER 'ROMMET
	!\$RIVE #ONTROL !SSEMBLY
!	"LADE #ONTROL
	"AIL #OVER
	#ONTROL #ABLE
	,OWER (ANDLE
	#ABLE 4IE
	4ORSION 3PRING , (
	44 3CREW X
	INCH \$ECK
!	44 3CREW X
	\$ECK "AFFLE
	"5PPER %NGINE 0ULLEY
	",OWER %NGINE 0ULLEY
	&LAT 7ASHER X
#	"LADE !DAPTER
	3CREW X
"	"LADE "ELL 3UPPORT !
	INCH -ULCHING "LADE
	3PRING 7ASHER X X
	3LEEVE 3PACER
	44 3CREW X

	\$ECK "AFFLE
!	#ARRIAGE "OLT
	&LANGE ,OCK .UT
	4RAILSHIELD
	-ULCH 0LUG
!	2EAR \$OOR
	3CREW X
	3TAR +NOB
	4ORSION 3PRING 2 (
	\$OOR 0IVOT 2OD
	'RASS #ATCHER &RAME
	'RASS #ATCHER
	#ARRIAGE "OLT
	7ING .UT
	%YE "OLT
	5PPER (ANDLE X
	"ELL 7ASHER X
	4ORSION 3PRING
	#HUTE \$EFLECTOR !DAPTER
	(INGE 0IN
	-ULCH 0LUG !SSEMBLY
	3IDE \$ISCHARGE #HUTE

X 8

0ARTS , I



To order replacement  
parts, call  
1-800-648-6776  
or visit  
[www.troybilt.com](http://www.troybilt.com)

- ! . 5 & ! # 4 5 2 % 2 3 , ) - ) 4 % \$ 7 ! 2 2 ! . 4 9 & / 2



THE LIMITED WARRANTY SET FORTH BELOW IS GIVEN BY DEXTER, INC. TO NEW MERCHANDISE PURCHASED AND USED IN THE UNITED STATES AND POSSESSIONS AND TERRITORIES

4ROY "ILT WARRANTS THIS PRODUCT AGAINST DEFECTS IN MATERIAL AND WORKSHIP FOR A PERIOD OF TWO YEARS COMMENCING ON THE DATE OF ORIGINAL PURCHASE AND WILL AT ITS OPTION REPAIR OR REPLACE FREE OF CHARGE AND SHALL ONLY APPLY IF THIS PRODUCT IS USED IN ACCORDANCE WITH THE OPERATOR'S MANUAL. THIS WARRANTY DOES NOT COVER DAMAGE TO THE PRODUCT CAUSED BY MISUSE, IMPROPER MAINTENANCE, ALTERATION, OR BECAUSE OF OTHER PERIL OR NATURAL CAUSE. THE WARRANTY IS VOID IF THE PRODUCT IS USED FOR ANY OTHER PURPOSE. THIS MANUAL WILL VOID THE WARRANTY AS TO ANY RESULTING DAMAGE.

ORMAL WEAR PARTS ARE WARRANTED FOR A PERIOD OF THIRTY DAYS FROM THE DATE OF PURCHASE. NORMAL WEAR PARTS INCLUDE BUT ARE NOT LIMITED TO: BELTS, BLADES, BLADE ADAPTERS, GRASS HOPPER, SPREADER, AND TIRES. THE WARRANTY IS VOID IF THE PRODUCT IS USED FOR ANY OTHER PURPOSE.

HOW TO OBTAIN SERVICE: WARRANTY SERVICE IS AVAILABLE THROUGH YOUR LOCAL AUTHORIZED Dealer. TO LOCATE THE DEALER IN YOUR AREA, PLEASE CONTACT 4ROY "ILT AT 606-678-9623 OR VISIT OUR WEBSITE AT WWW.TROYBILT.COM.

- THIS LIMITED WARRANTY DOES NOT PROVIDE FOR THE FOLLOWING:
- A THE ENGINE OR COMPONENT PARTS CARRY A SEPARATE MANUFACTURER'S WARRANTY FOR THE PERSON FOR WHOM THEY ARE USED.
  - B LOG SPLITTER PUMPS, VALVES, AND CYLINDERS HAVE A SEPARATE ONE YEAR WARRANTY.
  - C ROUTINE MAINTENANCE ITEMS SUCH AS OIL CHANGES, FILTERS, BLADE SHARPENING, TUNE UPS, BRAKE ADJUSTMENTS, CLUTCH ADJUSTMENTS, DECK ADJUSTMENTS, AND NORMAL WEAR PARTS ARE NOT COVERED BY THIS WARRANTY.
  - D SERVICE COMPLETED BY SOMEONE OTHER THAN AN AUTHORIZED SERVICE DEALER.