

## MODEL 266

### A NEW CARBURETTOR KIT WITH "SEMI FIXED" CARBURETTOR

In order to simplify the carburettor adjustment, a so called "SEMI FIXED" jet is introduced on the HS 244. Please read the function description on the back page.

At the same time screws, gaskets and manifold are changed, in order to improve the starting characteristics.

#### HS 224 B

<u>New parts</u>	<u>Description</u>
503 28 01-17	Carburettor
503 53 38-01	H-screw
503 49 24-01 x)	Manifold
503 49 69-02 x)	Screw (carburettor)
503 20 21-12 x)	Screw (manifold)
501 29 64-03 x)	Gasket (carburettor)
501 51 19-02 x)	Gasket (manifold)
	Rubber bellow (carburettor-crankcase)

#### HS 224 A

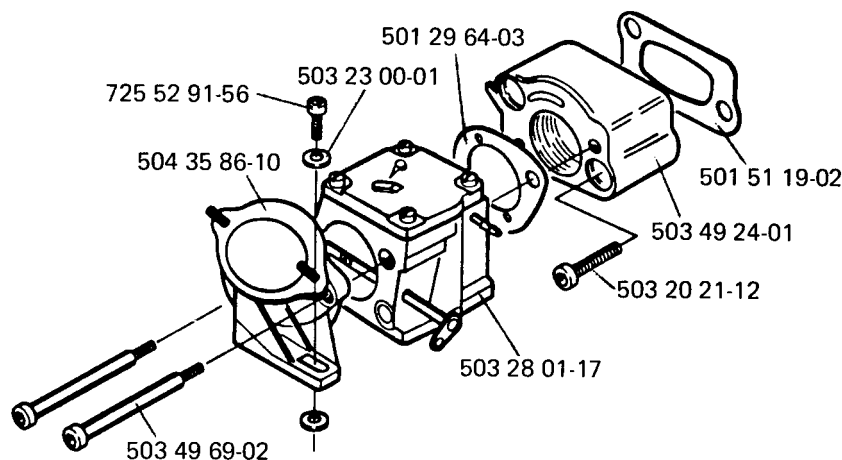
<u>Excluded parts</u>	<u>Remark</u>
501 77 79-01	remains as a spare part
501 26 89-01	remains as a spare part
501 51 18-03	remains as a spare part
503 20 21-10	remains as a spare part
725 53 35-55	remains as a spare part
501 29 64-01	remains as a spare part
501 51 19-01	is excluded as a spare part
501 51 73-01	remains as a spare part

#### NOTE!

1. If a new screw (now M4, previous M5) 503 49 69-02 and a new manifold are mounted on older saws, screw 503 20 21-12 and gasket 501 29 64-03 must be mounted, at the same time. (Gasket 501 51 19-02 only means a new material.) Filter holder compl. 504 35 86-10 <sup>x)</sup>, new-designed with a support against the crankcase, must also be mounted according to the description in the service bulletin 4: X 87.116-26.  
The support is attached in the crankcase with screw 725 52 91-56 <sup>x)</sup> and washer 503 23 00-01 <sup>x)</sup>.
2. When mounting a new "SEMIFIXED-carburettor" on an old saw, rubber bellow 501 51 73-01 should be removed and the hole in the crankcase should be covered or plugged up with tape. This is done in order to receive the best carburettor function.

<sup>x)</sup> These parts form a so called "vapour lock kit" under Ref. No. 503 50 21-01.

The change is introduced from serial number 266 XP 7161223.



### The function of the “Semi-fixed iet”

The carburettor is equipped with a primary main jet, which is calibrated to give the engine the desired rpm-range, power and torque. The performance of the engine is determined by the main jet.

Local conditions such as humidity, air pressure, air temperature, altitude and cutting equipment affect the function of the engine. Therefore, every chain saw needs a minor individual adjustment possibility.

The carburettor therefore has a small adjustment jet, which is adjusted with the “H-screw”. The engine can, with this adjustable jet, always be adjusted to a correct mixture.

**NOTE!** At full speed the engine must “four-stroke”.

Recommended basic adjustment the same as before: H = 3/4  
L = 1 turn open

Recommended maximum speed: 12.500 rpm

### Advantages with the “Semi-fixed jet”:

- The carburettor is reliable and easy to adjust.
- The carburettor can not normally be adjusted so lean that overrevving occurs.
- Engine damage and wear is reduced.
- The endurance of the engine increases.
- Chain wear and chain breakage are reduced.
- The endurance of the cutting equipment increases.