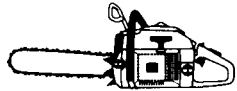



SERVICE 		8
		X 86.102-26

MODEL 281 XP

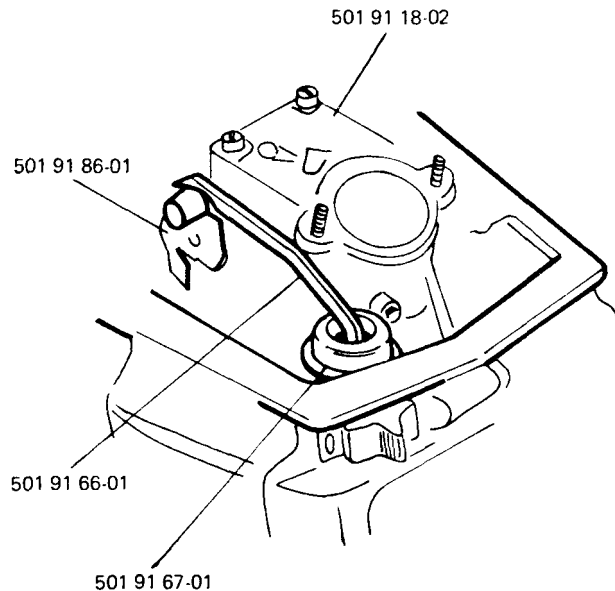
NEW THROTTLE TRIGGER SYSTEM

The new throttle trigger system consists of a throttle trigger, which is in direct contact with the throttle shaft. This throttle system design eliminates the problem with the throttle not being fully open when undercutting.

<u>New Ref. No.</u>	<u>Denomination</u>	<u>Excluded Ref. No.</u>	<u>Remark</u>
501 91 66-01	Throttle trigger	501 80 55-01	Remains as a spare part
501 91 18-02	Carburettor	501 91 18-01	
501 91 86-01	Throttle shaft	501 81 44-01	Remains as a spare part
501 91 67-01	Rubber grommet	501 91 63-01	Remains as a spare part during a transitional period
	Throttle push rod	501 81 43-01	Remains as a spare part
501 80 91-03	Tank compl.	501 80 91-02	

Note that the fuel tank compl. Ref. No. 501 80 91-02 is not available any more as a spare part with the old design of the throttle trigger Ref. No. 501 80 55-01.

When ordering the fuel tank compl. Ref. No. 501 80 91-03 for mounting on the model 181, the throttle trigger Ref. No. 501 80 55-01 must be ordered separately.



The carburettor Ref. No. 501 91 18-01 will not be available as a spare part. When mounting the carburettor Ref. No. 501 91 18-02 on the model 181, the throttle shaft Ref. No. 501 81 44-01 must be ordered separately.