



Service	B0303020
Bulletin	2003-09

Subject: Spindle housings with dust shields

Parts Affected: 107408, 107410, 107411, 107412, 107418,

Service Information:

To further improve the durability of the maintenance free spindle assemblies, replacement service spindle assemblies will now incorporate dust shields. Field-testing has shown a considerable improvement in durability with the addition of these shields, as they reduce the chances of water or dirt contamination of the bearings. The dust shields are compatible with the old spindle housings with the addition of machine washers to give proper housing clearance.

Parts Information:

The following page shows proper orientation of spindle assemblies with dust shields. Refer to legend to identify parts. If dust shields are to be added to an older spindle the addition of machine washers is necessary. *Particular attention must be given to orientation of combo-washer as it has a raised surface on one side;* the raised surface always points towards the bearing and may or may not have machine washers between it and the bearing (see diagrams).

Spindle Bearing continued

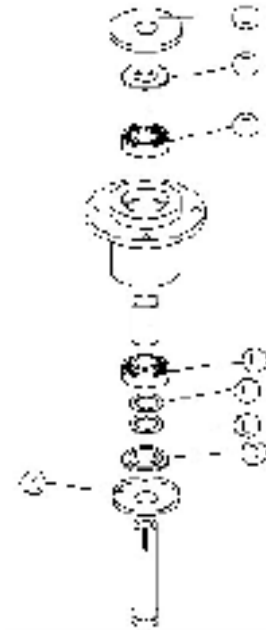
LEGEND

B- COMBO WASHER-	pn107272
C-MACHINE BUSHINGS	pn102244
D-BEARING	pn102677
J-TOP DUST SHIELD	pn108450
K-BOTTOM DUST SHIELD	pn108449

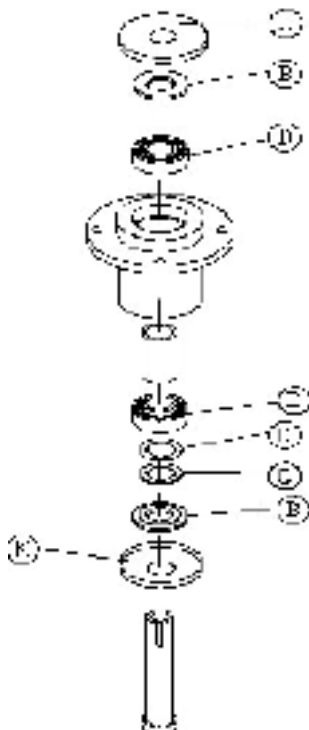
539 107408



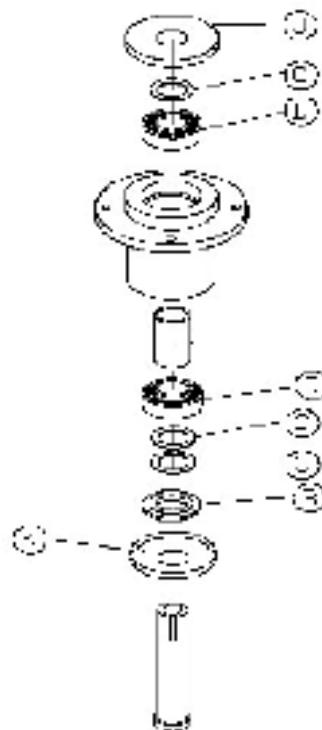
539 107410



539 107411



539 107412



539107418

