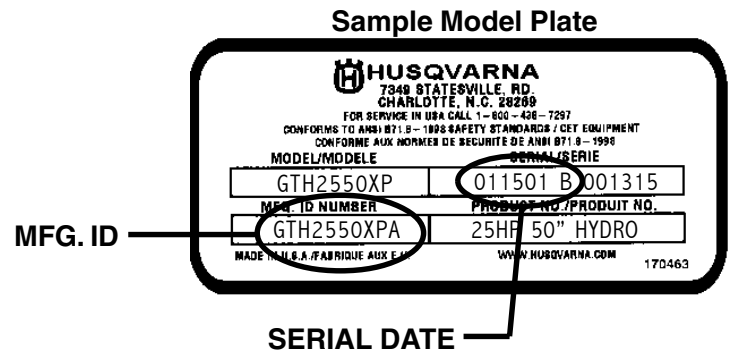




Important Safety Recall

Models Involved: GTH2550XPA
GTH2550XPB

Serial date range affected:
011501 thru 092101



The transaxle part numbers are either 176056 or 176057, as listed on the transaxle serial tag.

Subject: ☐ ☐ Wheel hubs may show excessive wear after extensive use.

On specific automatic transaxle units, the keyway inside the wheel hub may become damaged due to an undersized 2" key and soft washers. There may be wear on the inside surface of the rear wheel hub, washers and axle flange brackets inboard of the GT wheel hub. This condition may develop after several hundred hours of extreme use.

Correction:

Remove the two plastic axle caps (if equipped), e-rings, and outside washers at the end of the transaxle shafts. Remove the rear wheel hub assembly, washers/ spacer, the 2" keys on both axles, and the two axle flange washers adjacent to transaxle.

Install kit # 532 18 06-96 in the order illustrated. Inspect the wheel hub for any cracks or wear. If the wheel hub is cracked or shows extensive wear, replace with part # 532 14 05-07.

When installing the axle flange bracket, the wider flanges go on top and bottom of transaxle as anti-rotational features.

Reinstall original hub assemblies, e-rings, outside washers and plastic hub caps.

NOTE: Do not reuse original 2" long key or original washer/ spacer.



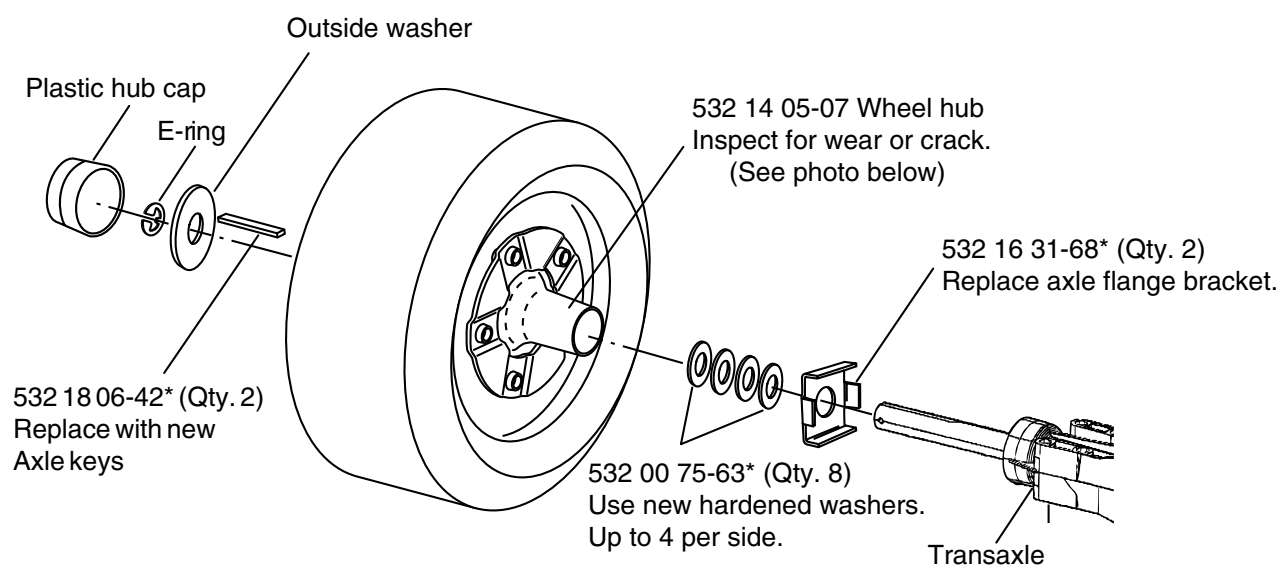
Important Safety Recall

Parts:

You will be sent an appropriate quantity of repair kits (part # 532 18 06-96), based on your tractor purchases. Additional parts, if needed, should be ordered through normal procedures and will be reimbursed under warranty.

Warranty:

Return the special claim form to Husqvarna for reimbursement for each tractor repaired.



*These parts are included in kit # 532 18 06-96



Worn hub, bracket & washer



Cracked hub