



SERVICE 		1
		B0200011

English 1 (2)

SB, Model 357, Crankshaft, cylinder, piston, 2002-02

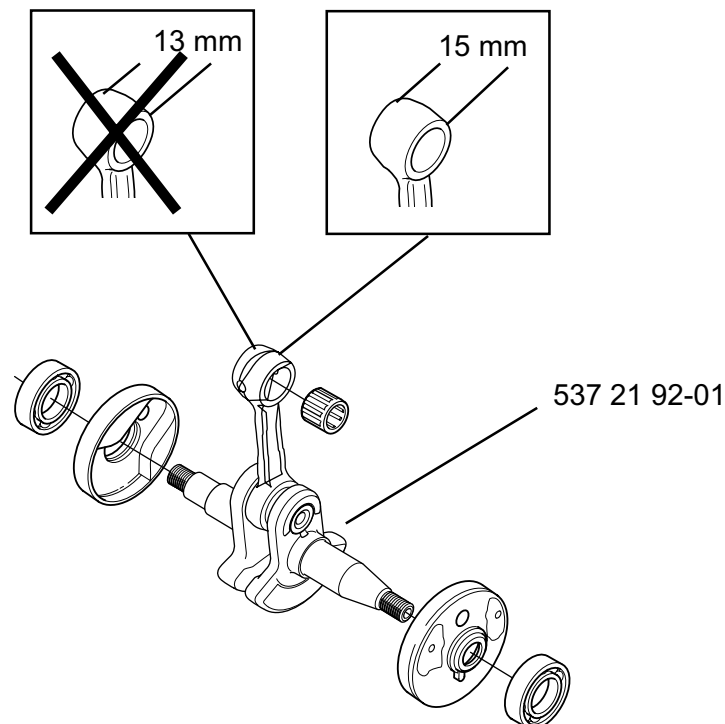
In order to further improve reliability, and improve the compatibility of other components with model 359, the width of the connecting rod has been increased from 13 mm to 15 mm.

NOTE! These parts are not fully interchangeable with those on earlier models. Please see below.



New part no.	Description	Excl. part no.	Remark
537 21 92-01	Crankshaft assy.	503 93 31-71	*
537 21 95-02	Cylinder assy.	503 91 98-71	*
537 21 96-02	Piston assy.	503 92 04-71	*
503 25 56-01	Gudgeon pin bearing 15 mm	501 86 18-01 13 mm	*

*still available as spare part for earlier versions of saw

Introduced from serial number: 357 020700001





SERVICE 		1
		B0200011

English 2 (2)

Crankshaft assembly

When replacing the crankshaft assembly on saws with serial numbers prior to 357 020700001 you must use the crankshaft with part number 503 93 31-71 (13 mm wide connecting rod).

When replacing the crankshaft assembly on saws with serial numbers later than 357 020700001 you must use the crankshaft with part number 537 21 92-01 (15 mm wide connecting rod).

Cylinder assembly

When replacing the cylinder assembly on saws with serial numbers prior to 357 020700001 you must use the cylinder assembly with part number 503 91 98-71.

When replacing the cylinder assembly on saws with serial numbers later than 357 020700001 you must use the cylinder assembly with part number 537 21 95-02.

Piston assembly

When replacing the piston assembly on saws with serial numbers prior to 357 020700001 you must use the piston assembly with part number 503 92 04-71.

When replacing the piston assembly on saws with serial numbers later than 357 020700001 you must use the piston assembly with part number 537 21 96-02.

Gudgeon pin bearing

When replacing the gudgeon pin bearing on saws with serial numbers prior to 357 020700001 you must use the gudgeon pin bearing (13 mm) with part number 501 86 18-01.

When replacing the gudgeon pin bearing on saws with serial numbers later than 357 020700001 you must use the gudgeon pin bearing (15 mm) with part number 503 25 56-01.