



Illustrated Parts List	1993-01
	I9307001

GC 300 (5708-1703)

Grass Catcher For RER 800

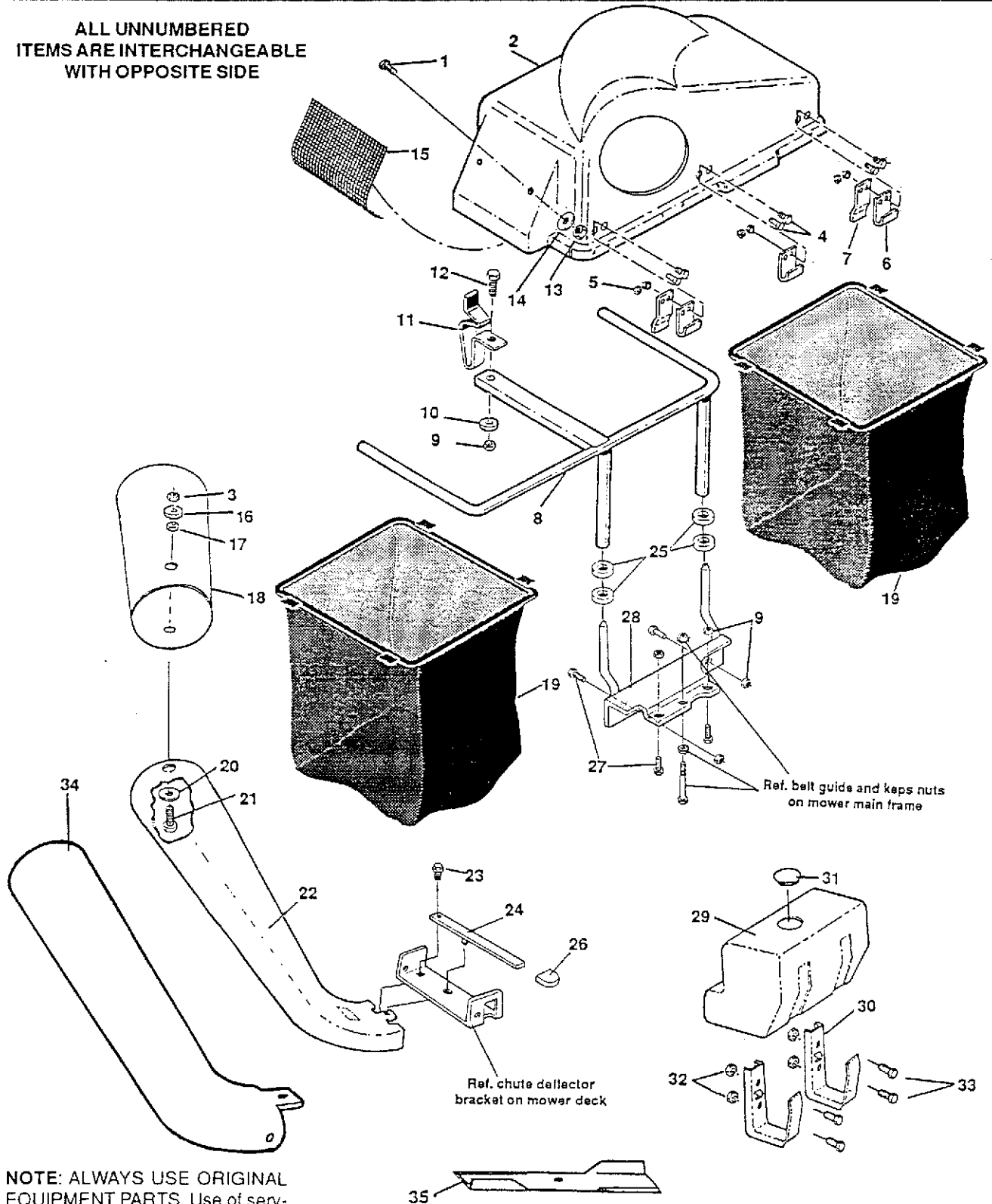


Repair Parts Manual Accessory (Ride Mower)

REPAIR PARTS

REAR MOUNTED, SIDE DISCHARGE GRASS CATCHER MODEL 5708-1703

ALL UNNUMBERED
ITEMS ARE INTERCHANGEABLE
WITH OPPOSITE SIDE



NOTE: ALWAYS USE ORIGINAL EQUIPMENT PARTS. Use of service replacement parts other than original equipment parts may void your warranty.

REAR MOUNTED, SIDE DISCHARGE GRASS CATCHER MODEL 5708-1703

ALWAYS GIVE THE FOLLOWING INFORMATION WHEN ORDERING REPAIR PARTS:

1. THE PART NUMBER; 2. The PART NAME; 3. QUANTITY DESIRED; 4. The MODEL NUMBER (As shown on Model Plate).

SEND PART ORDERS AS PER INSTRUCTIONS ON THE FRONT PAGE.

YOUR UNIT IS RIGHT HAND (RH) OR LEFT (LH) AS YOU STAND BEHIND IT.

DO NOT USE KEY NUMBERS WHEN ORDERING REPAIR PARTS, ALWAYS USE PART NUMBERS.

All replacement parts will be supplied in current production colors or in a neutral color.

A handling fee is applicable to small parts orders.

Key No.	Part No.	Description
1	57034	Screw, SI Fl Hd, No. 10-24 x 5/8 In.
2	306943	Cover
3	1502	Locknut, 1/4-20 Thd.
4	55686	Screw, SI Rd Hd, 1/4-20 x 5/8 In.
5	271172	*Nut, Keps, 1/4-20 Thd.
6	315449	Hinge, Cover
7	300624	Strap, Retainer
8	304976	Support Assembly
9	1498	Locknut, 5/16-18 Thd.
10	120393	Flatwasher, 11/32 In.
11	12346	Latch, Bagger
12	120834	Screw, Hex Hd, 5/16-18 x 1/2 In.
13	271166	Nut, Keps, No. 10-24 Thd.
14	1501	Flatwasher, 13/64 In.
15	300115	Screen
16	57626	Flatwasher, 9/32 In.
17	57506	Rubber Grommet
18	306783	Upper Tube Assembly
19	58283	Bag
20	120386	*Flatwasher, 5/16 In.

Key No.	Part No.	Description
21	180020	*Screw, Hex Hd, 1/4-20 x 3/4 In.
22	57786	Chute, Transition (for 36" deck models)
23	35497	Screw, Taptite, 5/16-18 x 1/2 In. (for 36" deck models)
24	9137	Lever, Latch
25	302131	Spacer (for 30" deck models)
26	42348	Grip
27	122028	*Screw, Hex Hd, 5/16-18 x 5/8 In.
28	304949	Lower Support
29	304263	Tank, Weight
30	304952	Bracket, Weight
31	53383	Plug, Weight Tank
32	45174	Nut, Hex Hd Wide Flange, 5/16-18 Thd.
33	122017	Screw, Hex Hd, 5/16-18 x 1 In.
34	314524	Chute, Transition (for 30" deck models)
35	323469	Blade, Hi-Lift (for 30" deck models)
35	323113	Owner's Manual (Not Illustrated)

(*) Standard Hardware Items - May be Purchased Locally.