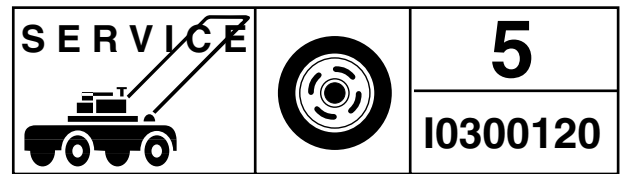


For Husqvarna Parts Call 606-678-9623 or 606-561-4983



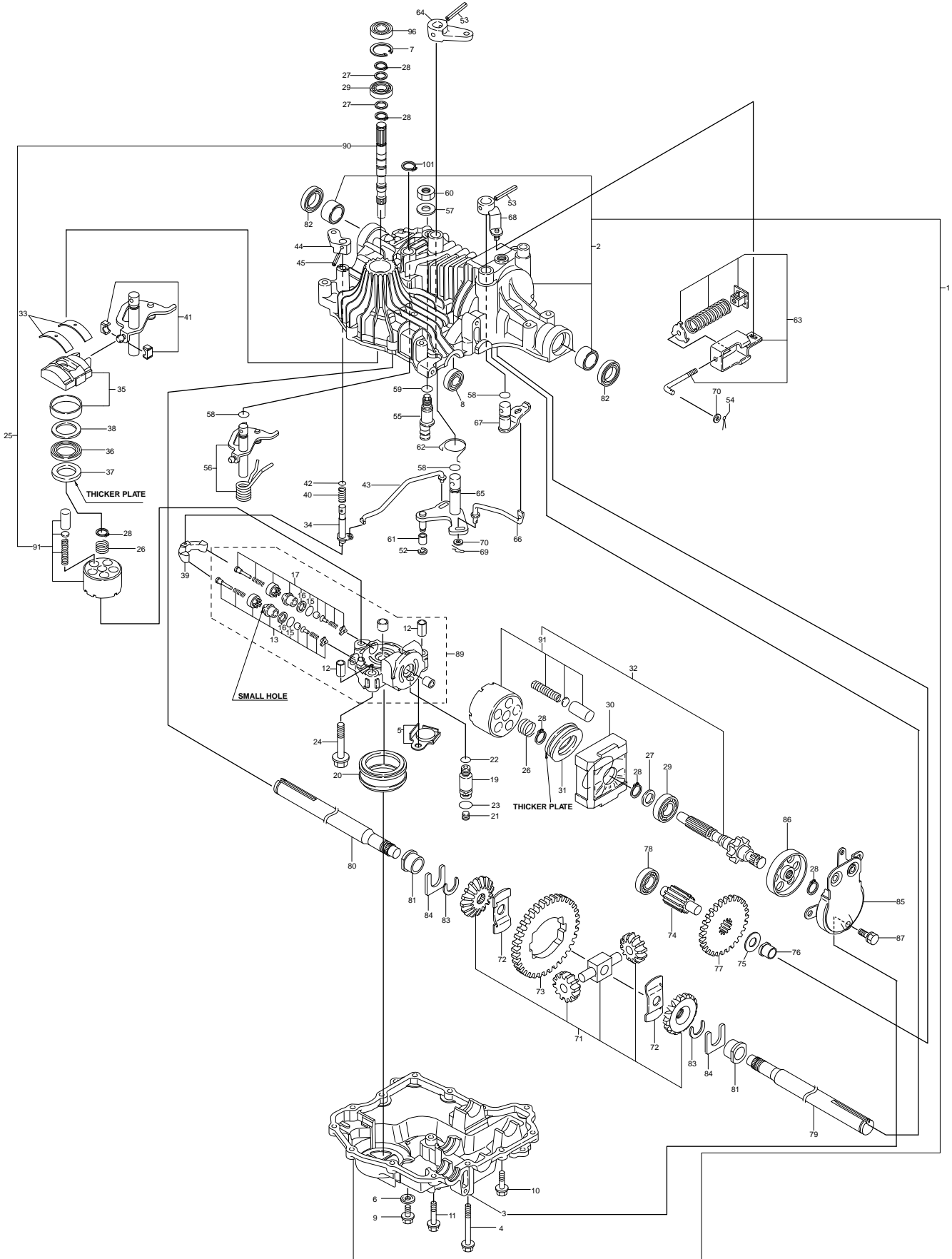
IPL, K 61, 2003-03, 106 30 88-61

K61

Spare parts
Ersatzteile
Pièces détachées
Reserve onderdelen
Repuestos
Reservdelar

106 30 88-61

A compl 506 93 76-01



B	Pos	Husqvarna no.	Description
	1	506 93 76-01	K61 HSQ-EU
	2	535 41 49-06	UPPER CASE KIT
	3	535 41 49-07	LOWER CASE K61
	4	535 41 46-83	"SCREW, CAP 8*75"
	5	535 41 49-08	MAGNET CASE K60
	6	506 95 75-01	SEAL
	7	535 40 28-50	RING
	8	506 95 72-01	SEAL
	9	535 41 47-43	BOLT
	10	535 40 28-28	TAPPING SCREW
	11	535 41 49-09	SCREW
	19	535 41 49-10	CONNECTOR
	20	535 41 47-16	FILTER K61
	21	535 41 47-55	PLUG
	22	535 41 47-52	O-RING
	23	535 40 28-14	O-RING
	24	535 41 49-11	BOLT
	25	535 41 49-12	PUMP SHAFT
	26	535 41 46-85	PUMP SPRING
	27	535 41 49-13	WASHER 15*20*1
	28	535 40 28-81	SNAP RING S15
	29	535 40 28-71	BEARING
	30	535 41 49-14	"HOUSING K61,K65"
	31	535 41 46-82	"BEARING, THURST"
	32	535 41 49-15	MOTOR SHAFT 15
	33	535 41 46-86	METAL THRUST
	34	535 41 49-16	BYPASS SHAFT
	35	535 41 49-17	SWASH PLATE COMP
	36	535 41 46-87	THRUST BEARING K81106
	37	535 41 46-88	THRUST PLATE A
	38	535 41 46-89	THRUST PLATE B
	39	535 41 49-18	ARM C
	40	535 40 28-47	SPRING 25
	42	535 41 49-19	O-RING
	43	535 41 49-20	BYPASS ROD
	44	506 95 61-01	ARM VALVE RELEASE
	45	535 41 47-03	ROLL PIN
	52	535 41 49-21	SNAP RING
	53	535 41 49-22	PIN-ROLL
	54	535 41 49-23	PIN 2.0 X 20
	55	535 41 49-24	FULCRUM 10
	57	535 40 28-13	WASHER
	58	535 41 46-19	O-RING
	59	535 40 28-15	O-RING
	60	506 95 66-01	LOCK NUT
	61	535 41 49-25	BUSHING B
	62	535 41 49-26	RETURN BRAKE SPRING
	63	506 95 65-01	BRAKE ROD
	64	535 41 49-27	BRAKE ARM
	65	535 41 49-28	BRAKE SHAFT
	66	535 41 49-29	BRAKE ROD
	67	535 41 49-30	BRAKE ARM A
	68	506 95 60-01	BRAKE ARM B
	69	535 41 49-31	PIN
	70	535 41 46-80	WASHER
	71	535 41 49-32	DIFFERENTIAL GEAR KIT
	72	535 41 49-33	THRUST WASHER
	73	535 41 49-34	FINAL GEAR 55
	74	535 41 49-35	FINAL PINION SHAFT
	75	535 41 49-36	WASHER
	76	535 41 49-37	BUSHING 15
	77	535 41 49-38	FINAL GEAR SHAFT 41
	78	535 41 49-39	BEARING 6203
	79	535 41 49-40	AXLE SHAFT LEFT (H.L.#840)
	80	535 41 49-41	AXLE SHAFT RIGHT (H.L.#839)
	81	535 41 49-42	BUSHING 22
	82	535 40 28-10	SEAL (S 25.4*42*8)
	83	535 41 49-43	RING 20
	84	535 41 49-44	THRUST WASHER
	85	506 95 63-01	BRAKE BAND
	86	506 95 64-01	BRAKE DRUM
	87	535 41 49-45	BOLT W/WASHEER 8*20
	89	535 41 46-93	CENTER CASE KIT
	102	535 41 49-46	INPUT SHEAVE