



Illustrated Parts
List

2000-04

10002009

Hydro-Gear



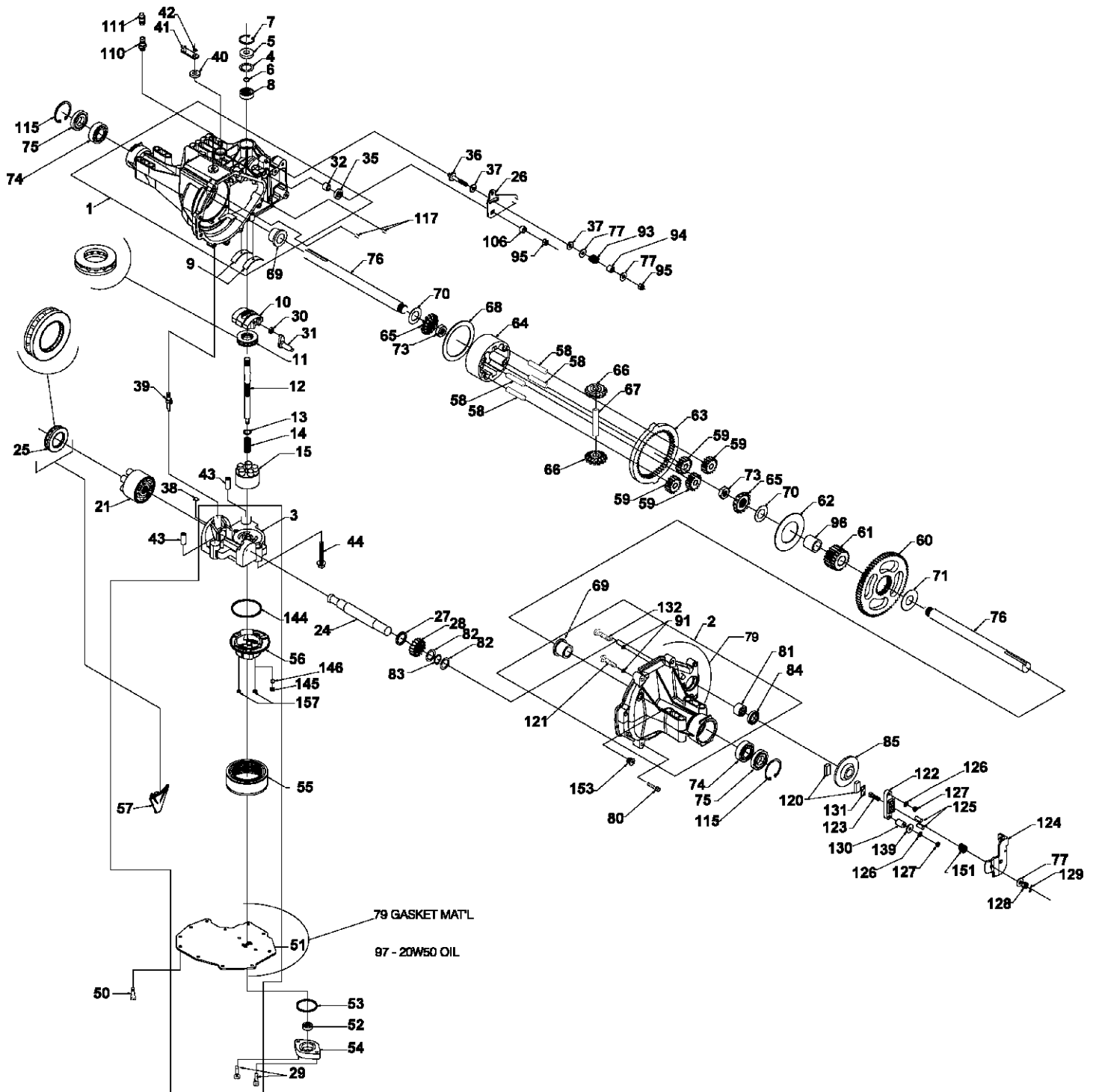
Transaxle

325-3000

This parts list is for information purposes only.

Please contact the transaxle manufacturer to order repair parts or complete transaxles, as these are not available through Husqvarna.

HYDRO GEAR TRANSAXLE 325-3000



HYDRO GEAR TRANSAXLE 325-3000

KEY NO.	PART NO.	DESCRIPTION	KEY NO.	PART NO.	DESCRIPTION
1	70297	MAIN HOUSING ASSEMBLY	68	50767	DIFF. THRUST PLATE
2	70298	R.H. HOUSING ASSEMBLY	69	50768	FLANGE BEARING
3	70438	CENTER SECTION ASSEMBLY	70	50770	WASHER
4	2003018	SPACER	71	50788	WASHER
5	9008000-0128	SEAL-LIP	73	50791	HEX JAM NUT, 5/8-18
6	2003016	WIRE RETAINING RING	74	50771	BALL BRG 6205-1
7	2003052	RETAINING RING	75	50772	SEAL 1"ID x 2.0472" x 0.375"
8	2003043	BALL BEARING	76	50663	SHAFT, AXLE
9	2003023	CRADLE BEARING	77	44130	WASHER
10	2003087	VARIABLE SWASHPLATE	79	44813	GASKET MATERIAL
11	50551	THRUST BEARING 30 X 52 X 13	80	50868	TORX HEAD SCREW, 5/16-18
12	50795	INPUT SHAFT	81	44752	NEEDLE BEARING (SCE1412)
13	2003017	BLOCK THRUST WASHER	82	50777	WASHER2
14	2003014	ARM - TRUNNION	83	50775	RETAINING RING
15	70331	10cc CYLINDER BLOCK ASSEMBLY	84	50773	LIP SEAL (0.875I.D.x1.30.D.x0.25
21	70082	21cc CYLINDER BLOCK ASSEMBLY	85	50779	BRAKE DISK
24	50662	OUTPUT (MOTOR) SHAFT	91	50867	ORING, 0.070 X 0.239
25	50552	THRUST BEARING 42 X 68 X 16	93	50277	SPRING, FRICTION PACK
26	50857	CONTROL ARM	94	50278	SPACER, FRICTION PACK
27	50774	SPACER	95	50108	HEX LOCK NUT 5/16-24
28	50661	16T PINION GEAR	96	50866	SLEEVE BEARING
29	50975	CAPSCREW, M6 X 1-22	97	50006	OIL
30	2000015	SLOT GUIDE	106	50850	SPACER, TRUNNION
31	50807	TRUNNION ARM	110	70110	FITTING-O RING ASS'Y
32	2003009	TRUNNION BUSHING	111	70109	CAP VENT ASS'Y
33	9008000-0126	LIP SEAL	116	50859	RETAINING RING
36	50284	5/16-24 STUD	117	9004800-2506	STD HDLS PIN
37	50281	PUCK, FRICTION	120	44132	PUCK, BRAKE
38	2003554	BYPASS PLATE	121	50874	RIB NECK BOLT, 2"
39	2003555	BYPASS ACTUATOR	122	50879	BRAKE YOKE
40	45074	LIP SEAL	123	44138	BOLT, SQUARE HEAD
41	50270	BYPASS ARM	124	50916	ARM, BRAKE
42	44870	RETAINING RING	125	44127	PINS, BRAKE
43	50002	PIN	126	43177	LOCKWASHER, 1/4"
44	50016	SCREW	127	43178	NUT, 1/4-20
50	50437	SCREW-SELF TAPPING	128	44142	NUT, CASTLE
51	50972	LOWER COVER	129	44101	COTTER PIN
52	50273	GEROTOR ASSEMBLY	130	23711	SPACER
53	9004101-1340	O-RING	131	44134	PUCK PLATE
54	50260	GEROTOR COVER	132	50865	RIB NECK BOLT, 3" 1
55	50957	FILTER	139	44278	WASHER, 7/8OD X 0.265ID X 0.125
56	51156	CHARGE MANIFOLD	144	50974	O RING, 2.864 ID X 0.070 THK
57	50796	RETAINER, MOTOR BEARING	145	51157	SPRING, RELIEF
58	50776	PIN, CARRIER	146	9001214-4400	BALL, 7/16
59	50763	15T PLANET GEAR	151	50919	COMP. SPRING, BRAKE ANTI-DRAG
60	50646	67T SPUR GEAR	153	9005110-5600	PLUG, STRAIGHT THREAD
61	50645	21T SUN GEAR	157	50977	SCREW O-RING
62	50769	PLANET THRUST PLATE	180	70449	MANIFOLD KIT
63	50764	51T RING GEAR			
64	50765	PLANETARY CARRIER			
65	50647	MITER GEAR, DIFF. (SPLINED)			
66	50648	MITER GEAR, DIFF.			
67	50766	SHAFT, DIFFERENTIAL			