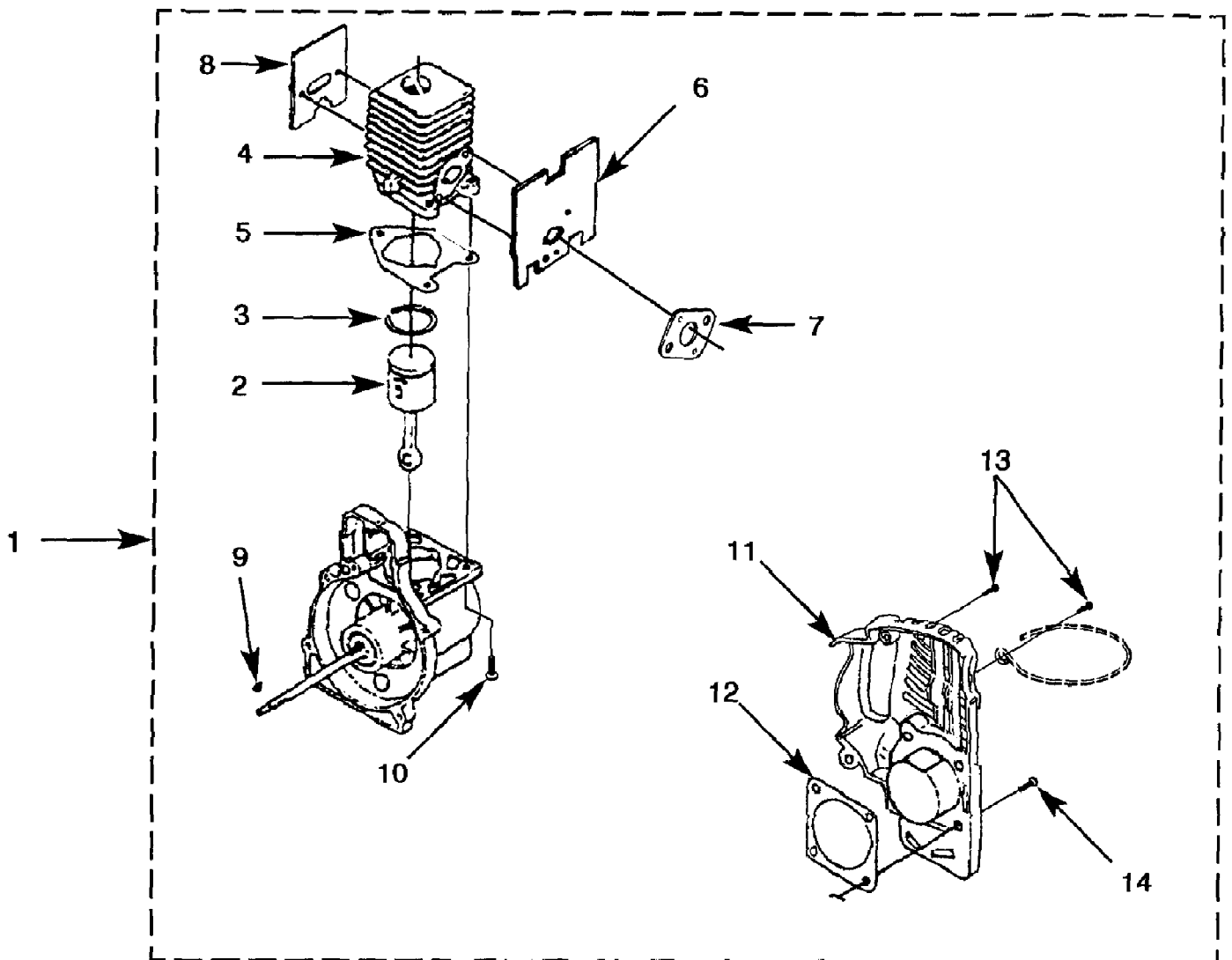


i625cd String Trimmer UT-20718
Carburetor - Fuel Tank

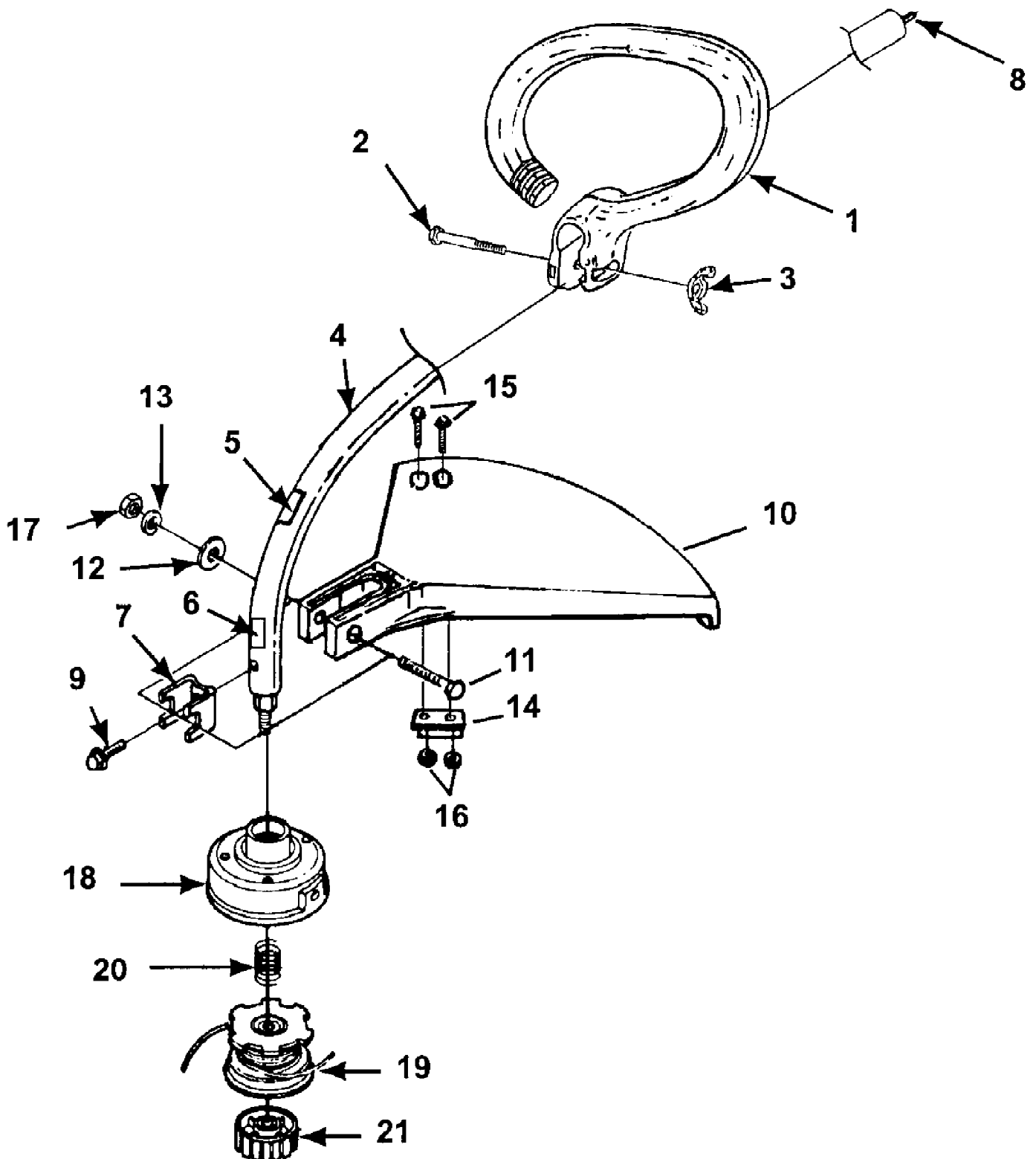
Page 2 of 10

| Ref # | Part Number | Qty | S/P/F | Description |
|-------|-------------|-----|-------|--|
| 1 | 04474 | 2 | /P | SCREW-Machine (10-24 X 2 1/4") |
| 2 | 06900A | 1 | /P | HEAT DAM |
| 3 | 093221 | 2 | S/P | SCREW-Sems (10-24 X 1.110") Torque Specs 40-50 In/Lbs; 4.5-5.6 Nm; Red 262 Required Loctite; Also included with Short block & Cylinder Kits |
| 4 | UP00608 | 1 | S | CARBURETOR |
| 5 | 98766A | 1 | S/P | GASKET-Carburetor |
| 6 | PS00236 | 1 | S | LEVER-Choke Rod (ZAMA) |
| 7 | A07141C | 1 | /P | FUEL TANK COMPLETE |
| 8 | 49422 | 1 | S | FILTER-Fuel |
| 9 | 9477222 | 1 | /P | TUBING-Rubber (5 1/2") |
| 10 | 0745428 | 1 | S | TUBING-Rubber (7") |
| 11 | UP00106 | 1 | /P | FUEL CAP |
| 12 | 98268 | 1 | S/P | CLAMP |
| 13 | 93426 | 2 | /P | CLAMP |
| 14 | 98792 | 4 | /P | BUMPER-Rubber |
| 15 | 07183 | 1 | S | SUPPORT-Wire |



| Ref # | Part Number | Qty | S/P/F | Description |
|-------|-------------|-----|-------|---|
| 1 | A09055A | 1 | S | SHORT BLOCK |
| 2 | UP00016 | 1 | S | 21CC PISTON & ROD |
| 3 | 96935 | 1 | S | RING-Piston |
| 4 | UP07145 | 1 | S/P | 25CC CYLINDER KIT |
| 5 | 04388B | 1 | S/P | GASKET-Cylinder |
| 6 | 06900A | 1 | /P | GASKET-Heat Dam |
| 7 | 98766A | 1 | S/P | GASKET-Carburetor |
| 8 | 98786C | 1 | /P | GASKET-Muffler |
| 9 | 69250 | 1 | /P | KEY-Woodruff |
| 10 | 880841 | 3 | S | SCREW-Sems. (12-24 X 3/4") Torque Specs 55-65 In/Lbs; 6.2-7.3 Nm |
| 11 | A07138 | 1 | /P | CRANKCASE COVER |
| 12 | 08661 | 1 | /P | GASKET-Crankcase Cover Also included with Short block & Cylinder Kits. |
| 13 | 82563 | 3 | /P | SCREW-Plastite (#10-24 X 3/4") Torque Specs 30-40 In/Lbs; 3.4-4.5 Nm |
| 14 | 880811 | 4 | /P | SCREW-Sems (10-24 X .910) Torque Specs 55-65 In/Lbs; 6.2-7.3 Nm |

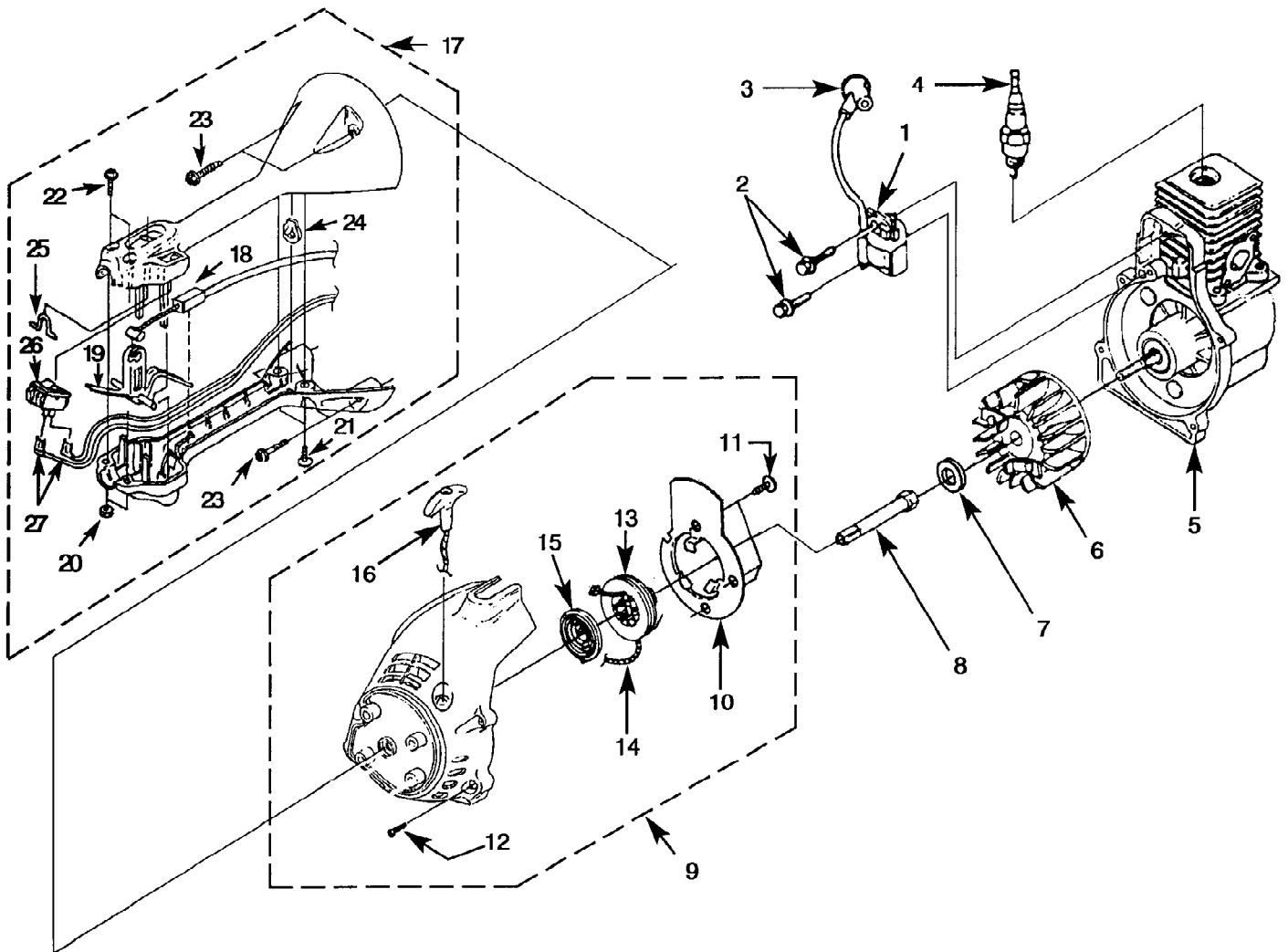
i625cd String Trimmer UT-20718
Handle - Shaft - Deflector - Spool & String



i625cd String Trimmer UT-20718
Handle - Shaft - Deflector - Spool & String

Page 6 of 10

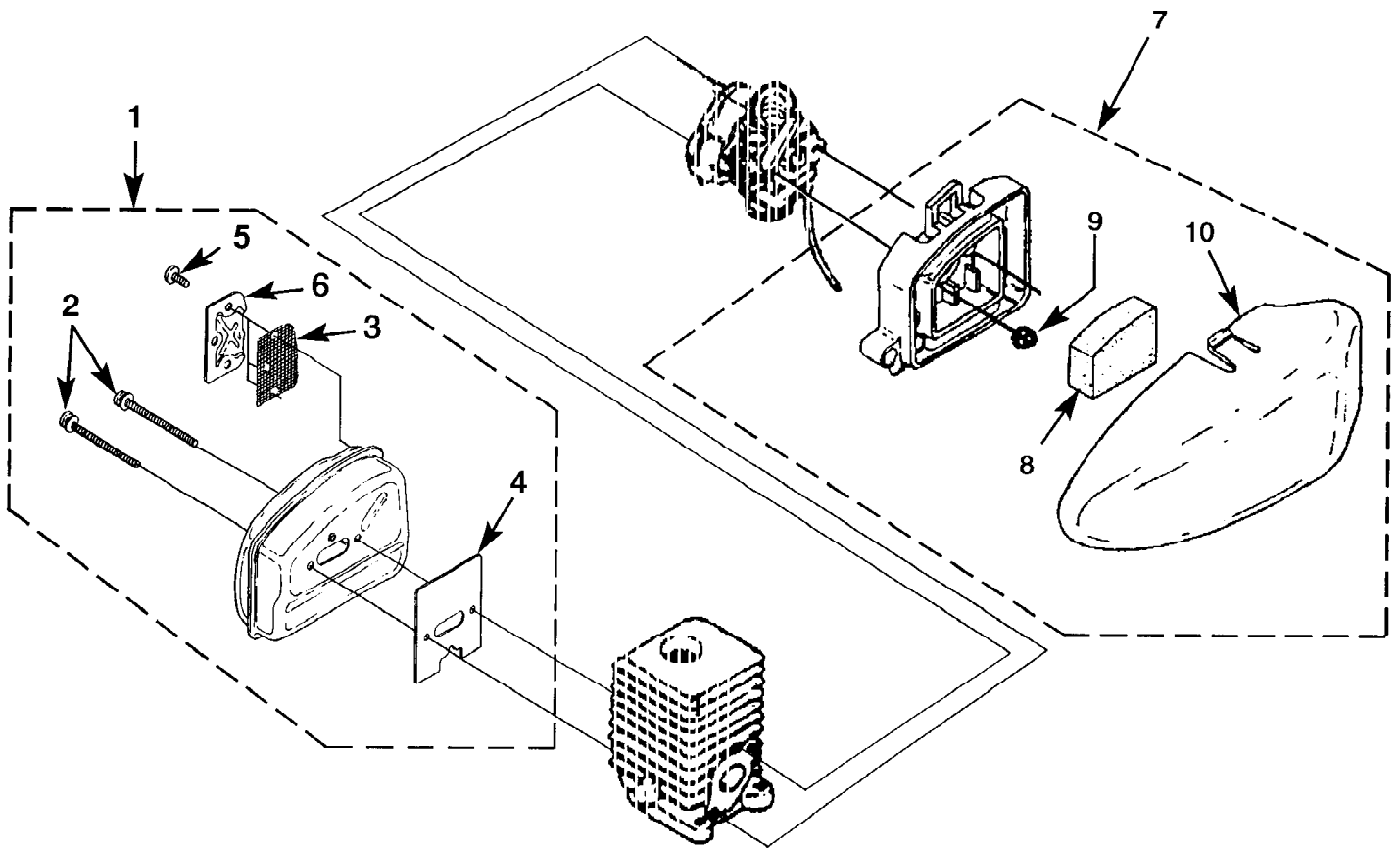
| Ref # | Part Number | Qty | S/P/F | Description |
|-------|-------------|-----|-------|--|
| 1 | A07136 | 1 | S | FRONT HANDLE |
| 2 | 80295 | 1 | /P | SCREW-Cap Hex Hd. (10-24 X 2") |
| 3 | 93992 | 1 | /P | NUT-Wing (1/4-20) Torque Specs 5-25 In/Lbs; .6-2.8 Nm |
| 4 | A08736 | 1 | S | HOUSING-Drive Shaft |
| 5 | 08224A | 1 | S | DECAL-Starting Inst. |
| 6 | 02985 | 1 | S | DECAL-Warning |
| 7 | 07928 | 1 | S/P | CLAMP |
| 8 | UP03031 | 1 | S | SHAFT-Flexible |
| 9 | 88077 | 1 | S | SCREW-Sems Hex Hd. (10-24 x .375) |
| 10 | A04704 | 1 | S | DEFLECTOR & BLADE (100 Degree) |
| 11 | 80295 | 1 | /P | SCREW-Cap Hex Hd. (1/4-20 X 2") |
| 12 | 84006 | 1 | /P | WASHER-Flat (1/4") |
| 13 | 83009 | 1 | /P | WASHER-Lock (1/4") |
| 14 | A03832 | 1 | S | BLADE-Cut-Off Kit |
| 15 | 82531 | 2 | /P | SCREW-Mech. Hex Hd. (10-24 X 7/8") Torque Specs 30-50 In/Lbs; 3.4-5.6 Nm; Required Loctite Rec 262 |
| 16 | 81261 | 2 | /P | NUT-Hex (10-24) |
| 17 | 81242 | 1 | /P | NUT-Hex (1/4-20) |
| 18 | A98231A | 1 | S/P | HOUSING & EYELET |
| 19 | A989122 | 1 | S | SPOOL & STRING (.080" Line) |
| 20 | 06713 | 1 | /P | SPRING-Compression |
| 21 | A98866A | 1 | S/P | RETAINER-Spool (R.H. Thread, Black) |



i625cd String Trimmer UT-20718
Ignition - Rotor - Starter

Page 8 of 10

| Ref # | Part Number | Qty | S/P/F | Description |
|-------|-------------|-----|-------|--|
| 1 | 94711CS | 1 | /P | MODULE-Ignition |
| 2 | A33055 | 1 | /P | TERMINAL & COVER |
| 3 | 82540 | 2 | /P | SCREW-Taptite (8-32 X 1") Torque Specs 30-40 In/Lbs; 3.4-4.5 Nm |
| 4 | 79252 | 1 | S | SPARK PLUG Torque Specs 120-180 In/Lbs; 13.6-28.4 Nm |
| 5 | | 1 | | SHORT BLOCK (Ref. "Carburetor - Fuel Tank" illustration and parts list) |
| 6 | A04158S | 1 | S | ROTOR w/Starter Pawls |
| 7 | PS84065 | 1 | S/P | WASHER-Flat (5/16) |
| 8 | 98795A | 1 | /P | CONNECTOR-Drive |
| 9 | A066012 | 1 | | STARTER ASSEMBLY |
| 10 | 06541A | 1 | S | PLATE-Baffle |
| 11 | 82546 | 3 | S/P | SCREW-Plastite (8-16 X 5/8") Torque Specs 20-40 In/Lbs; 2.3-4.5 Nm |
| 12 | 82538 | 4 | /P | SCREW-Thread Form. (10-24 X 3/4") Torque Specs 30-50 In/Lbs; 3.4-5.6 Nm |
| 13 | 98770A | 1 | /P | PULLEY-Starter |
| 14 | 9789902 | 1 | S/P | ROPE-Starter (42") |
| 15 | A98773A | 1 | S/P | SPRING & CONTAINER |
| 16 | PS06598 | 1 | | GRIP-Starter |
| 17 | A07158 | 1 | | CONTROL HANDLE |
| 18 | 06603A | 1 | | CABLE-Throttle |
| 19 | 06605C | 1 | S | TRIGGER |
| 20 | 81208 | 2 | /P | NUT-Hex (#10-24) |
| 21 | 82537 | 2 | /P | SCREW-Plastite (#10-14 X 7/8") Torque Specs 30-50 In/Lbs; 3.4-5.6 Nm |
| 22 | 825561 | 2 | S | SCREW-Machine (#10-24 X 1 1/4") Torque Specs 40-50 In/Lbs; 4.5-5.6 Nm |
| 23 | 82558 | 4 | /P | SCREW-Plastite (#10-14 X 1 1/8") Torque Specs 30-40 In/Lbs; 3.4-4.5 Nm |
| 24 | 06620 | 1 | /P | STOP-Drive Shaft |
| 25 | 06802 | 1 | /P | HOOK-Strap |
| 26 | 07385 | 1 | S | SWITCH-Rocker |
| 27 | A07149A | 2 | /P | LEADS-Electrical |



i625cd String Trimmer UT-20718
Muffler - Air Cleaner

Page 10 of 10

| Ref # | Part Number | Qty | S/P/F | Description |
|-------|-------------|-----|-------|---|
| 1 | A07142A | 1 | S | MUFFLER KIT |
| 2 | 88083 | 2 | S/P | SCREW-Truss Hd. (#10-24 X 2.188") Torque Specs 50-60 In/Lbs; 5.6-6.8 Nm |
| 3 | 06502 | 1 | /P | SCREEN-Spark |
| 4 | 98786C | 1 | /P | GASKET-Muffler Also included with Short block & Cylinder Kits. |
| 5 | 82600 | 3 | /P | SCREW-Truss Hd. (10-24 X .375) Torque Specs 25-35 In/Lbs; 2.8-4.0 Nm |
| 6 | 065011 | 1 | /P | Cover |
| 7 | A07157 | 1 | | AIR FILTER KIT |
| 8 | D06615 | 1 | S | FILTER-Air |
| 9 | 81208 | 2 | /P | NUT-Hex (10-24) Torque Specs 30-40 In/Lbs; 3.4-4.5 Nm |
| 10 | 070512A | 1 | S | COVER-Air Filter |