

HOMELITE 26cc MIGHTYLITE STRING TRIMMER - MODEL NUMBERS UT21004 AND UT29005

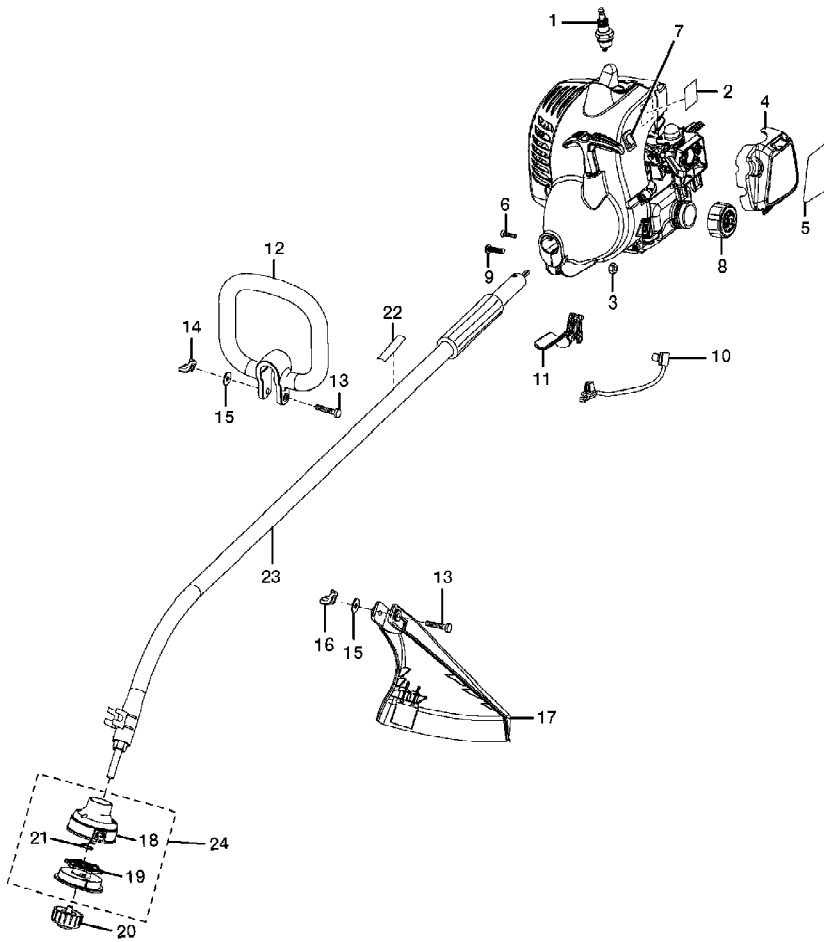


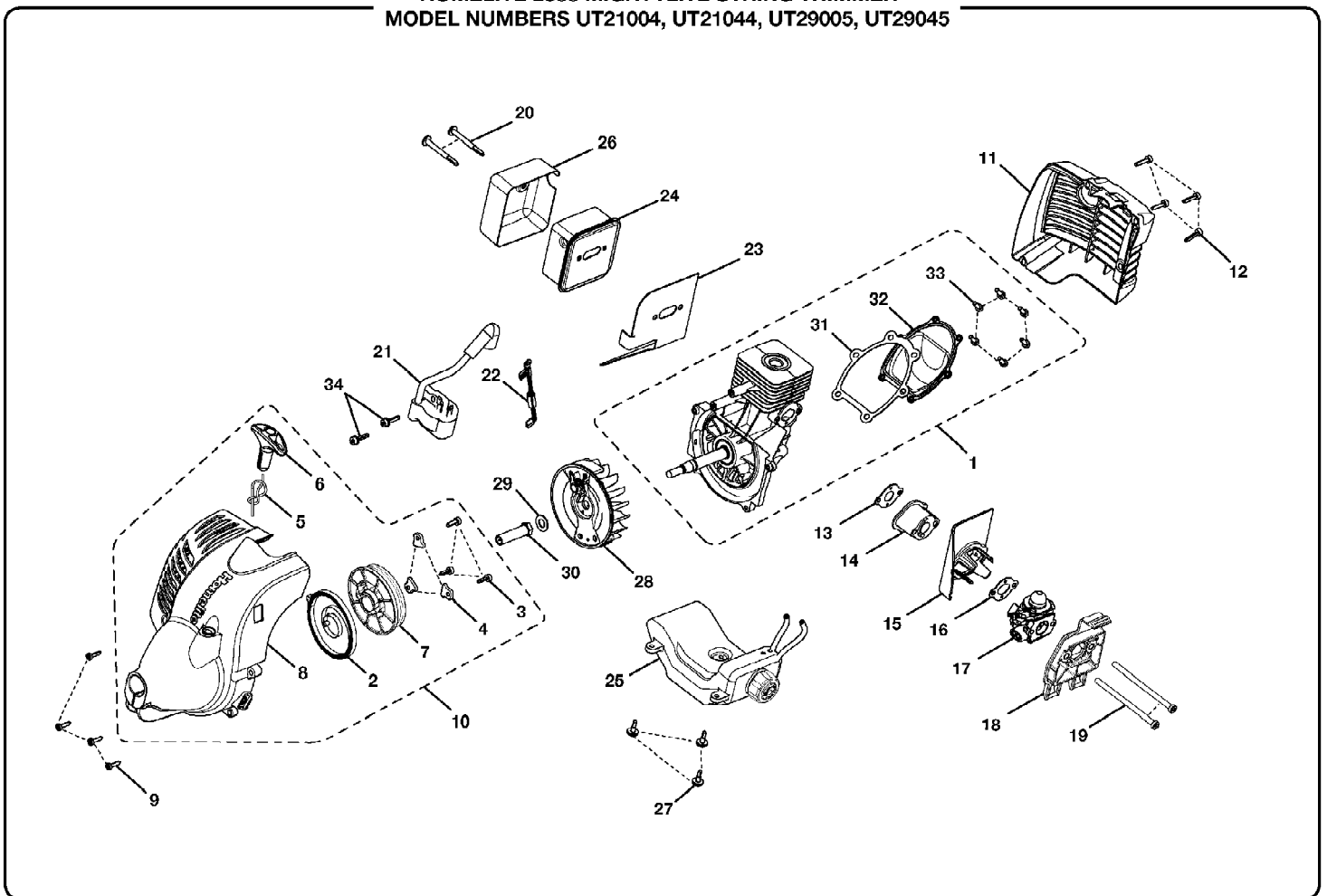
FIGURE A

UT21004 26cc Mightylite String Trimmer
Figure A

Page 2 of 4

Ref #	Part Number	Qty	S/P/F	Description
1	870174001	1	/P	Spark Plug (Champion RCJ6Y) Purchase Locally
2	940642025	1		Logo Label
3	678029002	1	S	Hex Nut (M6)
4	519823001	1		Air Box Cover
5	940734059	1		Starting Label
6	660634001	1	/P	Screw (8-16 x 5/16 in.)
7	760700002	1	S	Switch
8	308680001	1		Fuel Cap
9	660697002	1		Bolt (M6 x 20 mm)
10	270032001	1		Throttle Cable
11	518529001	1		Throttle Trigger
12	518674001	1		Handle
13	660643009	2		Bolt (1/4-20 x 40 mm)
14	518949001	1		Wing Nut (1/4-20)
15	678008001	2		Washer (1/4-20)
16	678034001	1		Wing Nut (1/4-20)
17	T308744001	1	/P	Curved Shaft Grass Deflector
18	308746002	1		Dual String Head Housing
19	308044007	1	S	Dual Line Spool and String
20	308042002	1	/P	Spool Retainer
21	678022001	1	S	Spring
22	940964009	1		Warning Label
23	308740005	1		Boom Assembly
24	308743002	1		String Head Assembly
	987000618	1		Operator's Manual (960089005)

**HOMELITE 26cc MIGHTYLITE STRING TRIMMER –
MODEL NUMBERS UT21004, UT21044, UT29005, UT29045**



Ref #	Part Number	Qty	S/P/F	Description
1	308891001	1		Short Block Assembly (Inc. Key Nos. 31-33)
2	638033001	1	/P	Spring & Container Assembly
3	660967001	3		Screw (M4 x 14 mm)
4	638389002	3		Pulley Retainer
5	900849002	1	/P	Starter Rope
6	511731001	1	S	Starter Grip
7	310022001	1		Easy Starter Assembly
8	308672001	1		Front Housing Assembly
9	660970001	4		Screw (M4 x 16 mm)
10	308671015	1		Starter Housing Assembly (Inc. Key Nos. 2-8; Plus Key Nos. 10, 11 and 7 from pages 2 & 3)
11	518504001	1		Rear Housing
12	660466001	4		Screw (M4 x 18 mm)
13	901551001	1		Intake Gasket
14	518497001	1		Heat Dam
15	518685001	1		Heat Dam Deflector
16	901552001	1		Carburetor Gasket
17	308054013	1	/P	Carburetor
18	518766001	1		Air Box Base
19	660454007	2		Screw (M5 x 70 mm)
20	660638003	2	S	Screw (10-24 x 2-1/8 in.)
21	850108001	1		Ignition Module
22	308863001	1		Lead Assembly
23	901452001	1		Muffler Gasket
24	308990016	1		Muffler Assembly
25	308675002	1		Fuel Tank Assembly w/Cap
26	638442001	1		Heat Shield
27	660970002	3		Screw (M4 x 10 mm Shoulder)
28	308811001	1		Flywheel Assembly
29	631049001	1	S/P	Washer
30	638348001	1		Drive Connector
31	901550001	1		Gasket
32	638337001	1		Crankcase Cover
33	660925003	6		Screw (M4 x 12 mm)
34	660968001	2		Screw (M4 x 19 mm)