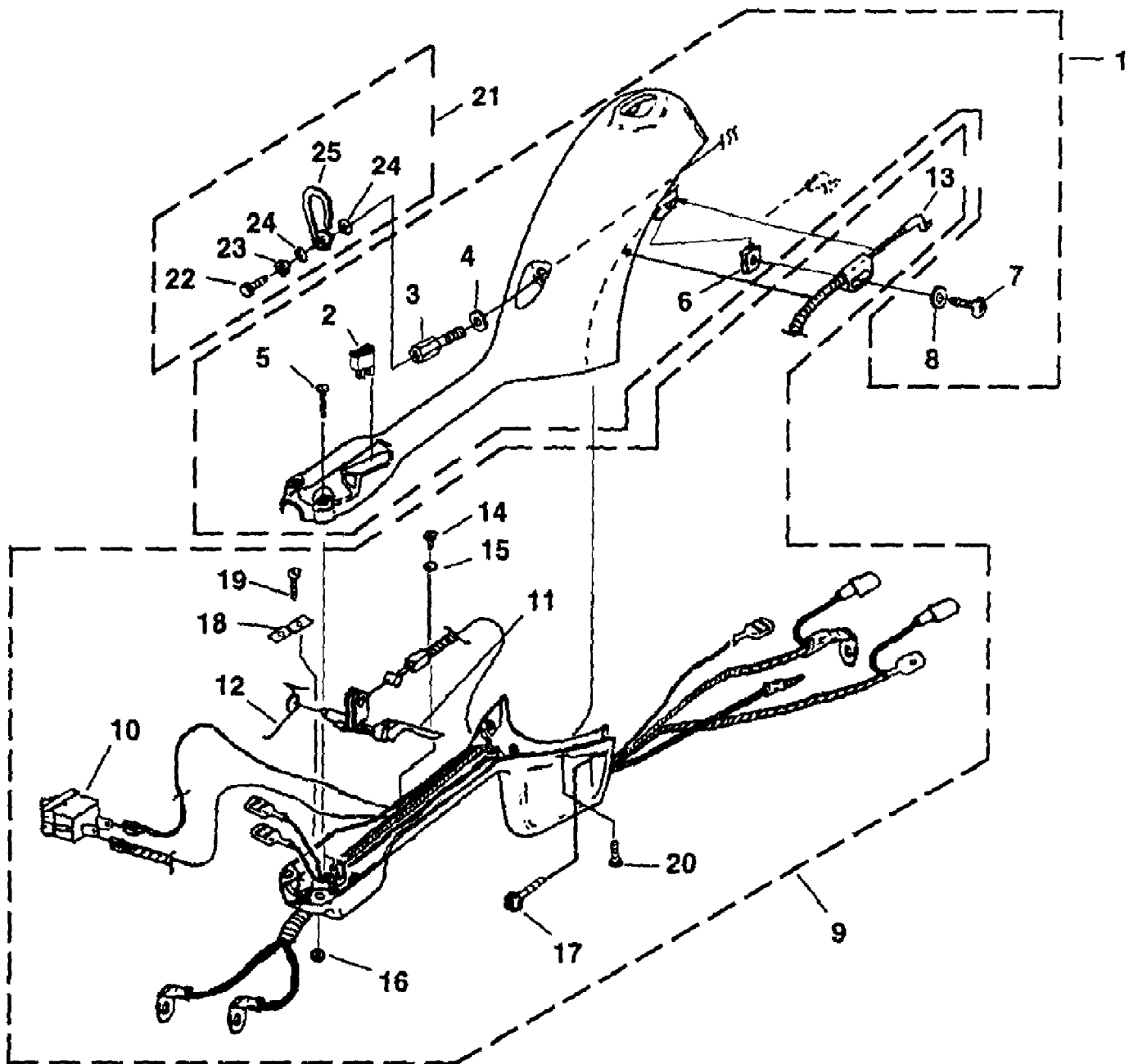


Touchstart String Trimmer UT-20683
Carburetor - Fuel Tank

Page 2 of 12

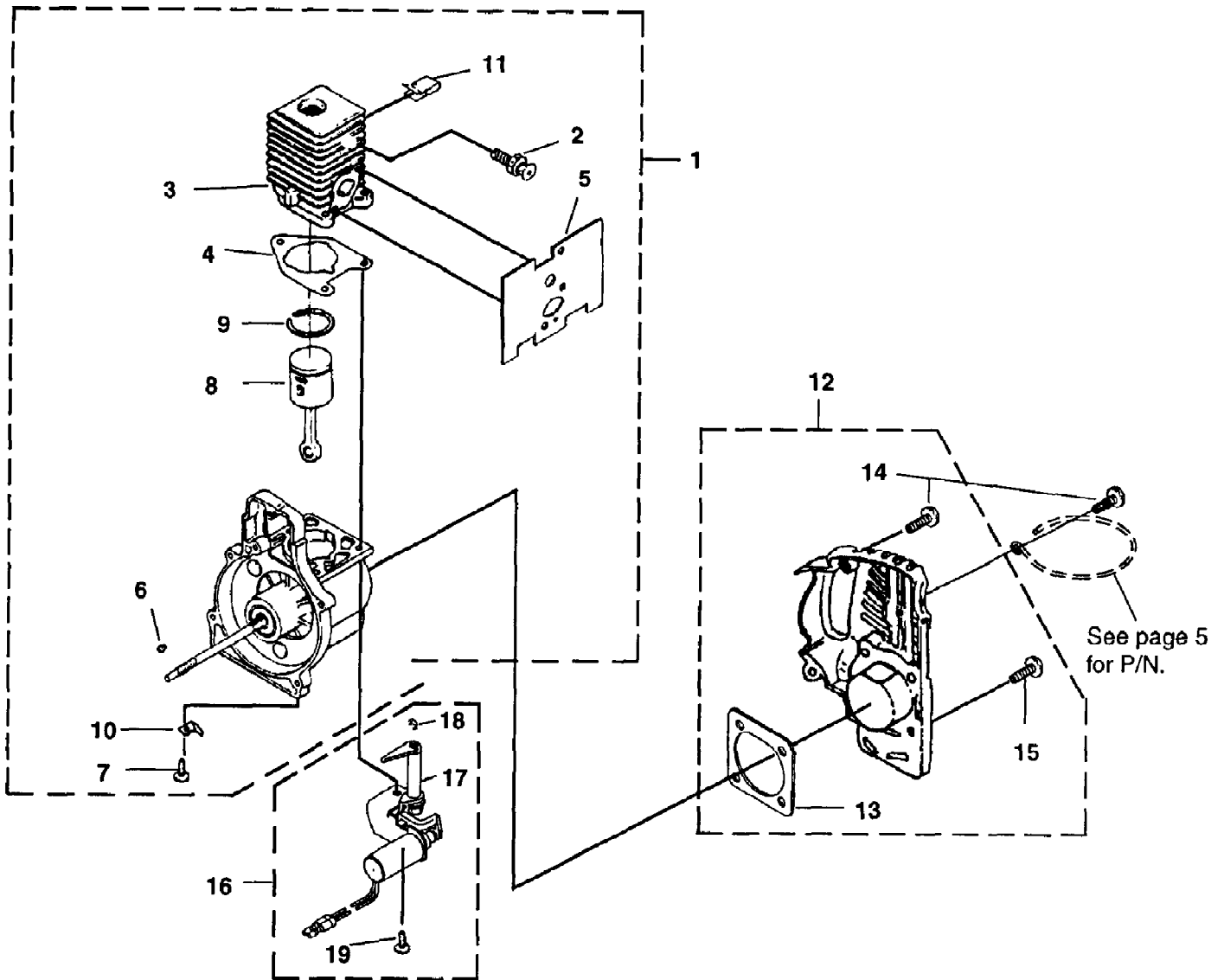
Ref #	Part Number	Qty	S/P/F	Description
F	A07170F	1	/P	FUEL TANK COMPLETE
1	49422	1	S	FILTER-Fuel
2	9477220	1	S	TUBING-Rubber (5")
3	98268	1	S/P	CLAMP-Wire
4	DA06486	1	S	FUEL CAP
5	98792	4	/P	BUMPER-Rubber
6	02067	1	/P	FITTING-In Line Fuel
7	07183	1	S	SUPPORT WIRE
B	A07169	1		CARBURETOR KIT
8	98766A	1	S/P	GASKET-Carburetor
9	06881	2	S	SCREW-Shoulder (10-24 x 2.8")
10	06445	1	S	HEAT DAM
11	825491	2	S	SCREW-Taptite (10-24 X 1") Torque Specs: 35-45 In/Lbs; 4.0-5.1 Required Loctite Red 262
12	07615	1	S	GASKET-Heat Dam



Touchstart String Trimmer UT-20683
Control Handle & Clutch Housing

Page 4 of 12

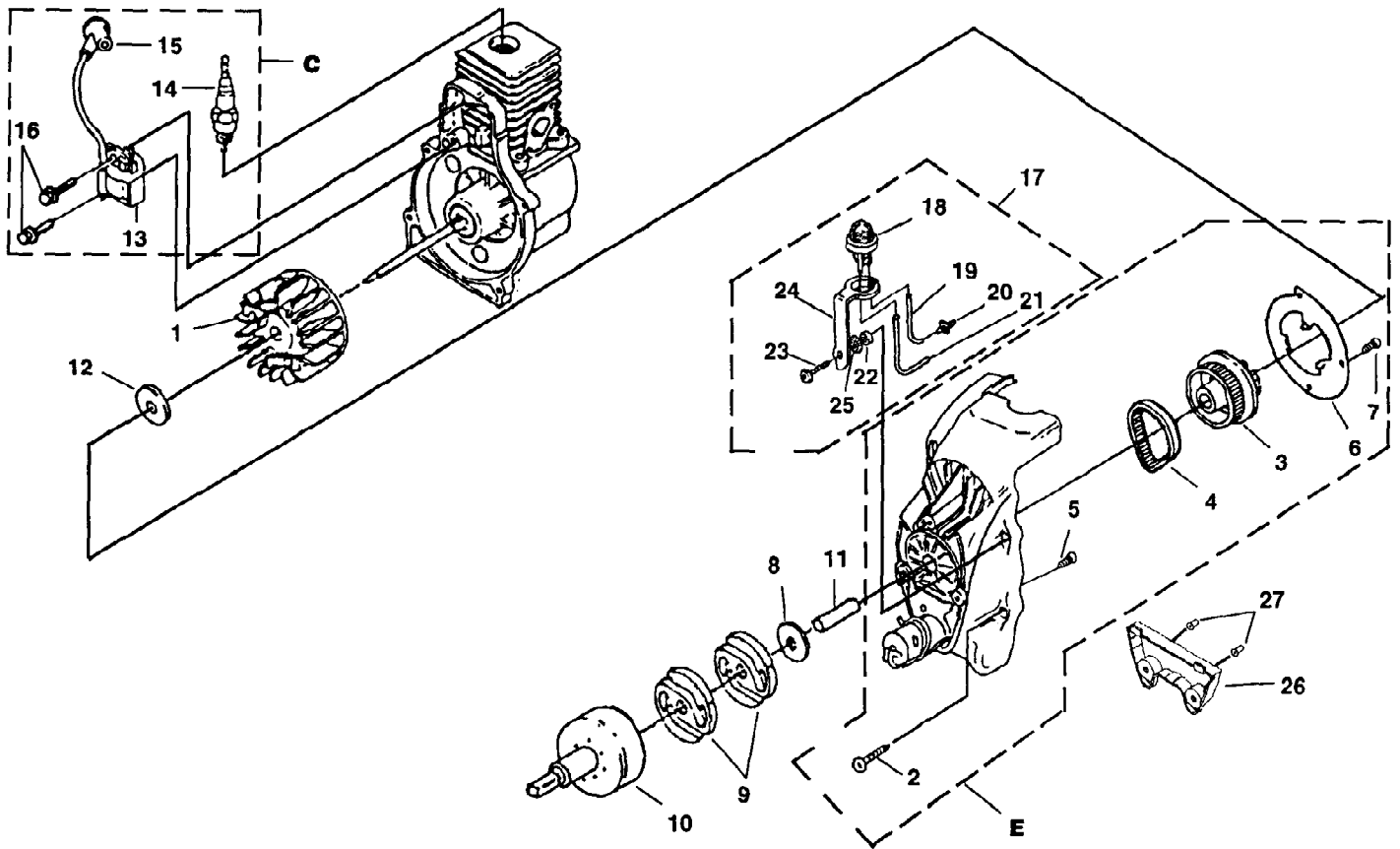
Ref #	Part Number	Qty	S/P/F	Description
1	UP00398	1		CLUTCH HOUSING (Top) (Also includes item #16)
2	PS00138	1		SWITCH-Start
3	08011	1	/P	SCREW-Adaptor Torque Specs: 30-40 In/lbs; 3.4-4.5 Nm
4	84003	1	/P	WASHER
5	82606	2		SCREW-Truss Hd. (10-24 x 1 7/8") Torque Specs: 30-40 In/lbs; 3.4-4.5 Nm
6	81289	1		NUT-Tinnerman
7	82612	1	/P	SCREW-Socket Hd. Torque Specs: 8-12 In/lbs; .9-1.4 Nm
8	841031	1		WASHER-Flat
9	UP00400	1		CONTROL HANDLE ASSEMBLY (Also includes item #5)
10	07919	1	/P	SWITCH-Rocker (STOP)
11	06547	1		Trigger
12	07071	1		SPRING-Torsion
13	06548A	1	S	CABLE-Throttle
14	82401	1		SCREW-Thread Form (4-20 x 1/4") Torque Specs: 5-10 In/lbs; .6-1.1 Nm
15	84025	1	/P	WASHER
16	81208	2	/P	NUT-Hex (10-24)
17	82556	2	/P	SCREW-Torx Truss Hd (10-24 x 3 1/4") Torque Specs: 30-40 In/lbs; 3.4-4.5 Nm
18	06912	1		RETAINER
19	82564	1	S	SCREW-Thread Form (6-20 x 1/2") Torque Specs: 5 -10 In/lbs; .6-1.1 Nm
20	82563	2	/P	SCREW-Thread Form (10-14 x 1/2") Torque Specs: 30-40 In/lbs; 3.4-4.5 Nm
21	A07560	1		HANGER KIT (Also includes items #3 & 4)
22	80648	1	/P	SCREW (10-32 x 1/2") Torque Specs: 30-40 In/lbs; 3.4-4.5 Nm
23	83046	1		WASHER-Lock
24	84003	2	/P	WASHER
25	07516	1	/P	HANGER



Touchstart String Trimmer UT-20683
Engine Internal

Page 6 of 12

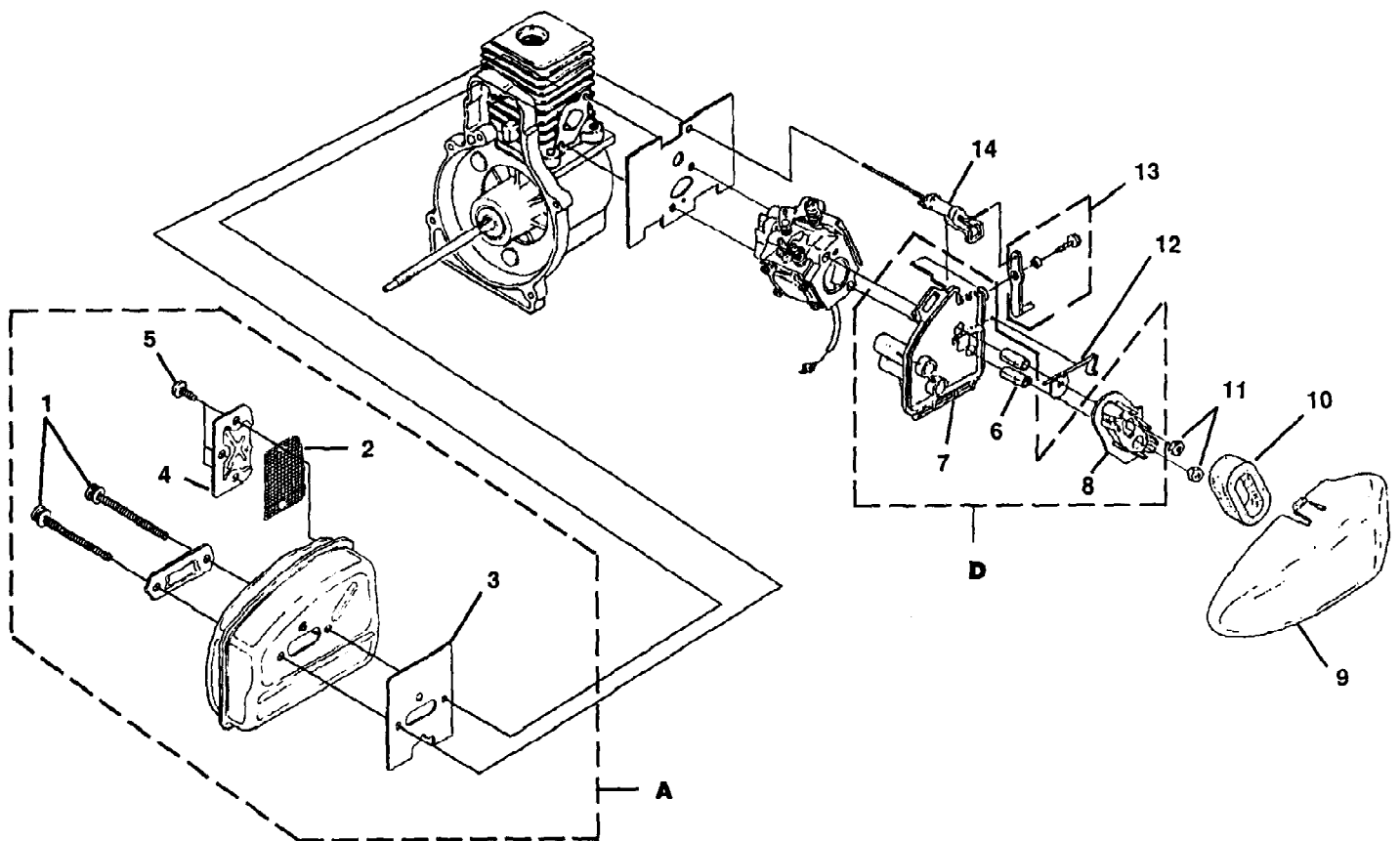
Ref #	Part Number	Qty	S/P/F	Description
1	A07166	1	S	SHORT BLOCK (25CC)
2	06488	1		COMPRESSION RELEASE VALVE Torque Specs: 50-60 In/Lbs; 5.6-6.8 Nm
3	A07167	1	S	25CC CYLINDER KIT
4	04388B	1	S/P	GASKET-Cylinder
5	07615	1	S	GASKET-Heat Dam
6	69250	1	/P	KEY-Woodruff
7	826091	3		SCREW-Thread Form. (10-24 X 7/8") Torque Specs: 55-65 In/Lbs; 6.2-7.3 Nm
8	A07314B	1	S	25CC PISTON & ROD
9	96935	1	S	RING-Piston
10	07193	1		TERMINAL
11	06469	1		CLIP
12	A07138	1	/P	CRANKCASE COVER
13	08661	1	/P	GASKET-Crankcase Cover (Also included with item #3)
14	82563	3	/P	SCREW-Plastite (#10 X 3/4") Torque Specs: 55-65 In/Lbs; 6.2-7.3 Nm
15	880811	4	/P	SCREW-Taptite (10-24 X .910) Torque Specs: 55-65 In/Lbs; 6.2-7.3 Nm
16	UP00403	1		SOLENOID ASSEMBLY
17	PS00139	1		ARM-Lever
18	69599	1	/P	RING-Retaining
19	82609	1		SCREW-Thread Form (10-24 x 7/8") Torque Specs: 55-65 In/Lbs; 6.2-7.3 Nm



Touchstart String Trimmer UT-20683
Ignition - Rotor - Starter - Clutch

Page 8 of 12

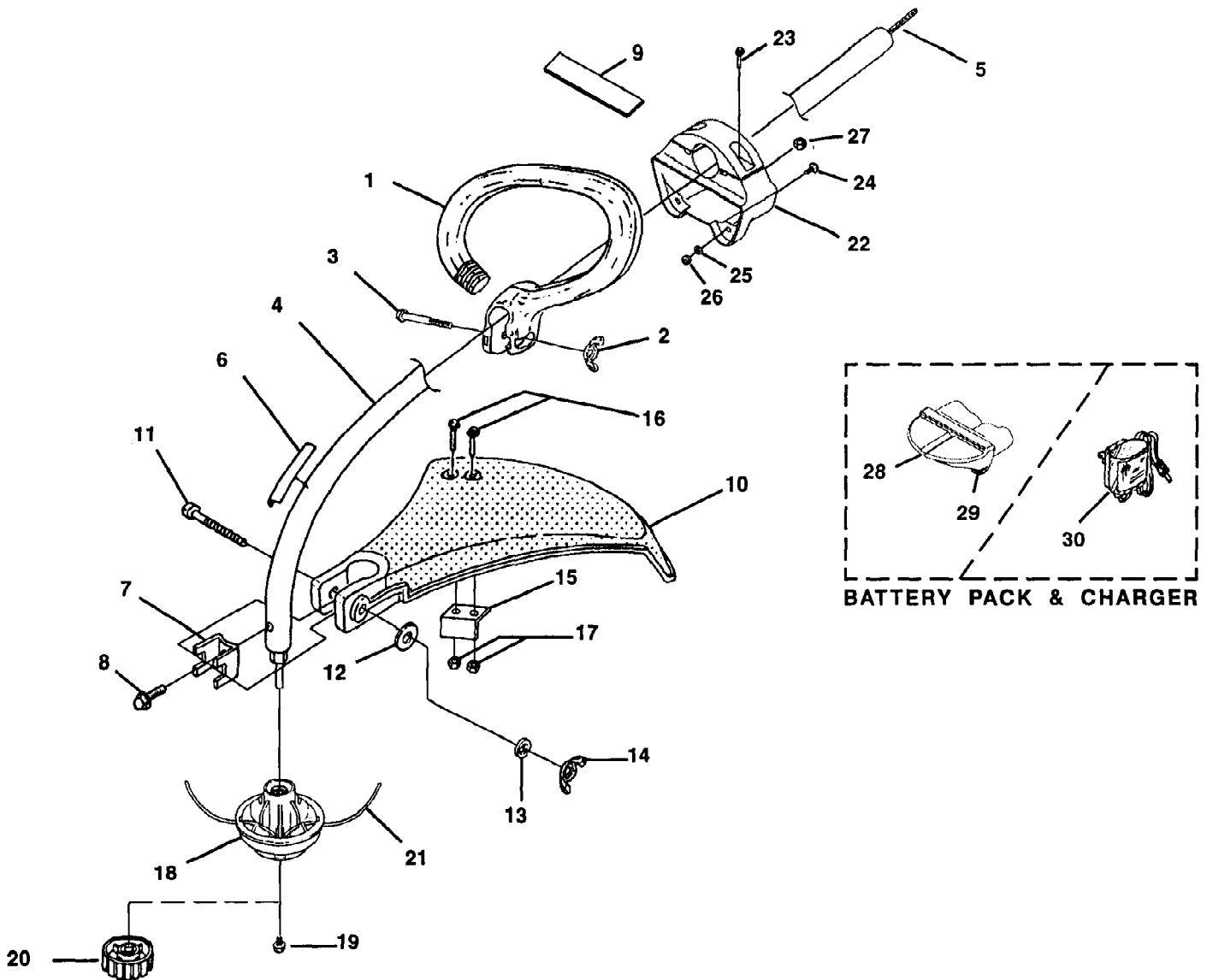
Ref #	Part Number	Qty	S/P/F	Description
1	A04158S	1	S	ROTOR w/Starter Pawls
E	A07168B	1		COMPLETE STARTER ASSEMBLY
2	82538	4	/P	SCREW-Thread Form. (10-24 X 3/4")
3	06533	1		PULLEY-Starter
4	06534	1		BELT-Starter
5	82540	3	/P	SCREW-Thread Forming (8-32 X 1") Torque Specs: 10-20 In/Lbs; 1.1-2.3 Nm
6	06723A	1	/P	BAFFLE
7	82543	3	/P	SCREW-Plastite (8-16 X 1/2") Torque Specs: 15-25 In/Lbs; 1.7-2.8 Nm
8	98929A	1	S/P	WASHER-Flat
9	00242	2	/P	CLUTCH Torque Specs: 90-110 In/Lbs; 10.2-12.4 Nm
10	A02727	1	S	CONNECTOR & DRUM Torque Specs: 40-50 In/Lbs; 4.5-5.6 Nm
11	035662A	1	S	SPACER
12	95479A	1	/P	WASHER
C	A07174	1	S	IGNITION KIT
13	06504A	1	/P	MODULE-Ignition
14	96169S	1	S	SPARK PLUG Torque Specs: 120-180 In/Lbs; 13.6-20.3 Nm
15	A33055	1	/P	TERMINAL & COVER
16	82540	2	/P	SCREW-Taptite (8-32 x 1") Torque Specs: 30-40 In/Lbs; 3.4-4.5 Nm
17	A07927A	1	/P	START ASSIST KIT
18	07916	1	S	BULB-Primer
19	0143908	1		LINE-Fuel (2.0") (5,0 cm)
20	02067	1	/P	FITTING-Fuel Line
21	0143910	1	/P	LINE-Fuel (2.5") (6,5 cm)
22	07915	1	S	SPACER
23	825491	1	S	SCREW - (10-24 x 1.00") Torque Specs: 55-65 In/Lbs; 6.2-7.3 Nm
24	07913	1	S	BRACKET
25	08218	1		WASHER-External Lock
26	UP00401	1		COVER ASSEMBLY
27	A06971	2		KNOB Torque Specs: 10 15 In/Lbs; 1.1-1.7 Nm



Touchstart String Trimmer UT-20683
Muffler - Air Cleaner

Page 10 of 12

Ref #	Part Number	Qty	S/P/F	Description
A	A07142A	1	S	MUFFLER KIT
1	88083	2	S/P	SCREW-Machine (#10-24 X 2.188") Torque Specs: 50-60 In/Lbs; 5.6-6.8 Nm
2	06502	1	/P	SCREEN-Spark
3	98786C	1	/P	GASKET-Muffler
4	06501	1	S	COVER
5	82600	3	/P	SCREW (8-32 x 3/8") Torque Specs: 25-35 In/Lbs; 2.8-4.0 Nm
D	A07171	1	S	AIR FILTER BODY
6	06720	2		SPACER
7	06484	1		BODY
8	A06480	1		BLADE RET. MAGNET
9	06483	1	/P	COVER-Air Filter
10	006485	1		FILTER-Air
11	81208	1	/P	NUT-Hex (10-24) Torque Specs: 30-40 In/Lbs; 3.4-4.5 Nm
12	A064771	1		BLADE & SHAFT ASSEMBLY
13	A07172	1		BELLCRANK
14	A07173	1		CHOKE ACTUATOR



Touchstart String Trimmer UT-20683
Shaft - Spool & String - Grass Deflector

Page 12 of 12

Ref #	Part Number	Qty	S/P/F	Description
1	A07136	1	S	HANDLE - Anti-Vibe
2	93992	1	/P	NUT-Wing, Washer Faced (1/4-20) Torque Specs: 5-25 In/Lbs; .6-28 Nm
3	80295	1	/P	SCREW-Cap Hex Hd.
4	UP00415	1	S	DRIVESHAFT HOUSING ASSY.
5	07486	1		SHAFT-Flexible
6	PS00169	1		DECAL-Warning
7	07928	1	S/P	CLAMP
8	88077	1	S	SCREW-Sems Hex Hd. (#10-24 X 3/8") Torque Specs: 15-25 In/Lbs; 1.7-2.8 Nm
9	PS00174	1		GROMMET, Isolator
10	A04705	1	S	DEFLECTOR & BLADE KIT (55 Deg.)
11	80295	1	/P	SCREW-Cap Hex Hd. (10-24 X 2")
12	84006	1	/P	WASHER-Flat (1/4")
13	83009	1	/P	WASHER-Lock (1/4")
14	93992	1	/P	NUT-Wing, Washer Faced (1/4-20) Torque Specs: 5-25 In/Lbs; .6-2.8 Nm
15	A03832	1	S	BLADE-Cut-Off
16	82531	2	/P	SCREW-Mech. Hex Hd. (10-24 X 7/8") Torque Specs: 15-20 In/Lbs; 1.7-2.3 Nm
17	81208	2	/P	NUT-Hex (10-24)
18	DA09364	1	S	STRINGHEAD-Pro-Cut w/line
19	PS00082	1	/P	SCREW-Stringhead Retainer Torque Specs: 40-60 In/Lbs; 4.5-6.8 Nm
20	DA98866A	1	S	RETAINER-Spool (RH Thread, Black) (Optional)
21	D09365	1	S	LINE-Replacement
22	UP00402	1		BATTERY ENCLOSURE
23	PS00210	2		SCREW Torque Specs: 35-45 In/Lbs; 4.0-5.1 Nm
24	06973	2		SCREW Torque Specs: 35-45 In/Lbs; 4.0-5.1 Nm
25	841031	2		WASHER
26	06974	2		NUT-Spanner
27	81208	2	/P	NUT
28	DA06965A	1	/P	BATTERY PACK
29	A06971	1		KNOB-Battery Pack Torque Specs: 10-15 In/Lbs; 1.1-1.7 Nm
30	D06550	1	/P	BATTERY CHARGER