



EXPAND-IT
ATTACHMENTS

OPERATOR'S MANUAL

MANUEL D'UTILISATION

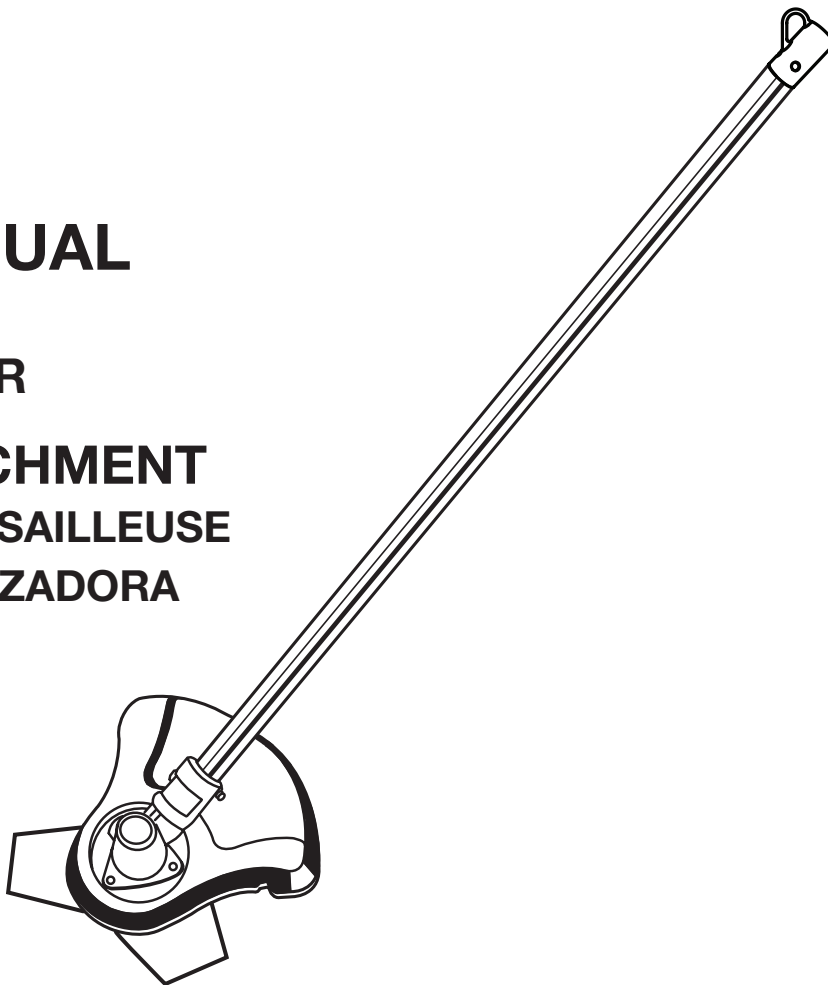
MANUAL DEL OPERADOR

BRUSHCUTTER ATTACHMENT

ACCESSOIRE DE DÉBROUSSAILLEUSE

ACCESORIO PARA DESBROZADORA

RY15702



Your brushcutter attachment has been engineered and manufactured to our high standard for dependability, ease of operation, and operator safety. When properly cared for, it will give you years of rugged, trouble-free performance.

⚠ WARNING: To reduce the risk of injury, the user must read and understand the operator's manual before using this product.

Thank you for your purchase.

SAVE THIS MANUAL FOR FUTURE REFERENCE

Votre accessoire de débroussailleuse a été conçu et fabriqué conformément aux strictes normes de fiabilité, simplicité d'emploi et sécurité d'utilisation. Correctement entretenu, il vous donnera des années de fonctionnement robuste et sans problème.

⚠ AVERTISSEMENT : Pour réduire les risques de blessures, l'utilisateur doit lire et veiller à bien comprendre le manuel d'utilisation avant d'employer ce produit.

Merci de votre achat.

Su nuevo accesorio para desbrozadora ha sido diseñado y fabricado de conformidad con estrictas normas de calidad para brindar fiabilidad, facilidad de uso y seguridad para el operador. Con el debido cuidado, le brindará muchos años de sólido y eficiente funcionamiento.

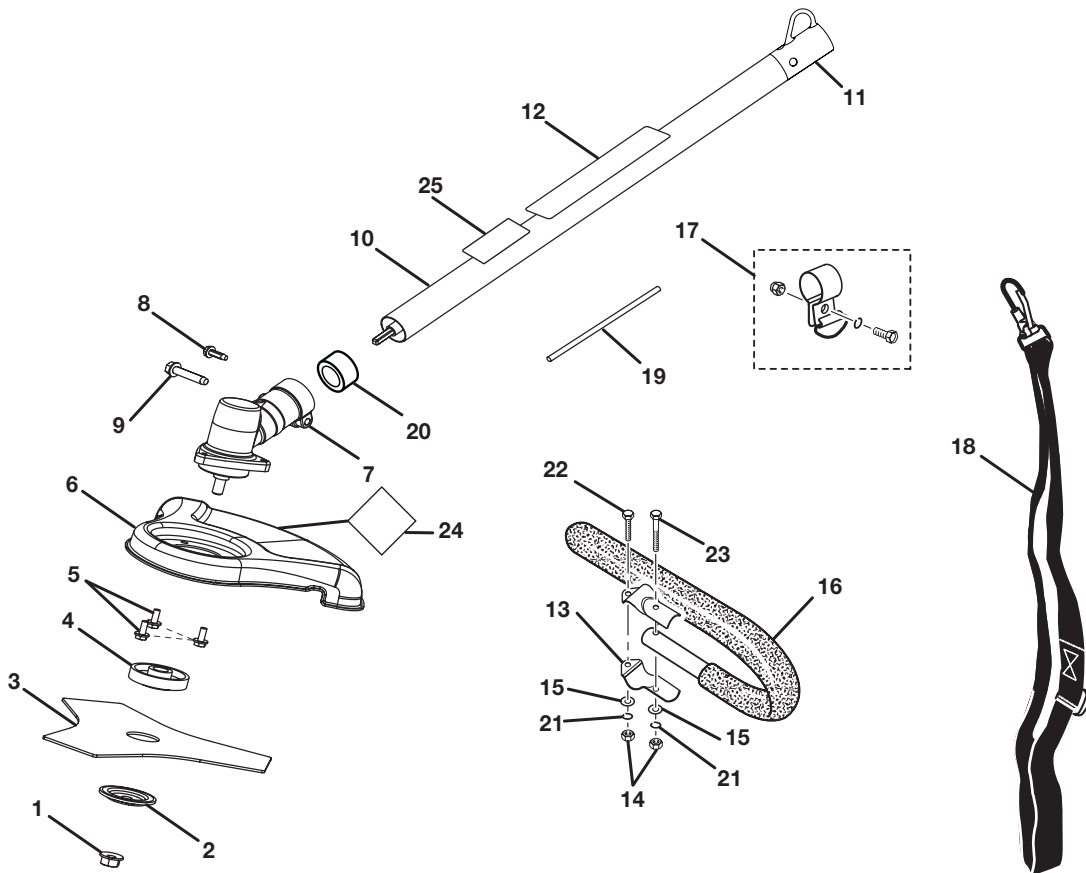
⚠ ADVERTENCIA: Para reducir el riesgo de lesiones, el usuario debe leer y comprender el manual del operador antes de usar este producto.

Le agradecemos su compra.

**CONSERVER CE MANUEL POUR
FUTURE RÉFÉRENCE**

**GUARDE ESTE MANUAL PARA
FUTURAS CONSULTAS**

EXPLODED VIEW AND PARTS LIST



| KEY NO. | PART NUMBER | DESCRIPTION | QTY. |
|---------|-------------|--|------|
| 1 | 678018001 | Blade Nut, Left-handed Threads (M8) | 1 |
| 2 | 638017001 | Cupped Washer..... | 1 |
| 3 | 638006004 | Blade (Tri-Arc®) | 1 |
| 4 | 678011001 | Flanged Washer..... | 1 |
| 5 | 660737001 | * Screw (10-24 x 1/2 in. Hex Head w/Dish Washer) | 3 |
| 6 | 638120004 | Brushcutter Guard | 1 |
| 7 | 308021001 | Gear Head Assembly..... | 1 |
| 8 | 660641001 | * Screw (10-24 x 5/8 in.)..... | 1 |
| 9 | 660642001 | Screw (1/4 in.-20 x 1-1/4 in., Hex Head) | 1 |
| 10 | 120530012 | Boom Assembly (Includes Key No. 12 and 25) | 1 |
| 11 | 518019002 | Hanger Cap | 1 |
| 12 | 940657027 | Warning Label..... | 1 |
| 13 | 638014001 | Handle Bar Clamp | 2 |
| 14 | 678016001 | * Hex Nut (1/4 in.-20) | 2 |
| 15 | 678013001 | Washer..... | 2 |
| 16 | 308046001 | J-Handle and Grip | 1 |
| 17 | 308224001 | Strap Hanger | 1 |
| 18 | 308487001 | Shoulder Harness Assembly | 1 |
| 19 | 678020001 | Head Locking Tool..... | 1 |
| 20 | 518367001 | Spacer | 1 |
| 21 | 678012001 | * Lock Washer (1/4 in.)..... | 2 |
| 22 | 660643002 | * Bolt (1/4 in.-20 x 1 in.) | 1 |
| 23 | 660643001 | * Bolt (1/4 in.-20 x 1-1/2 in.)..... | 1 |
| 24 | 940705021 | Logo Label..... | 1 |
| 25 | 940726013 | Logo Label..... | 1 |
| | 987000382 | Operator's Manual | |

* STANDARD HARDWARE ITEM – MAY BE PURCHASED LOCALLY