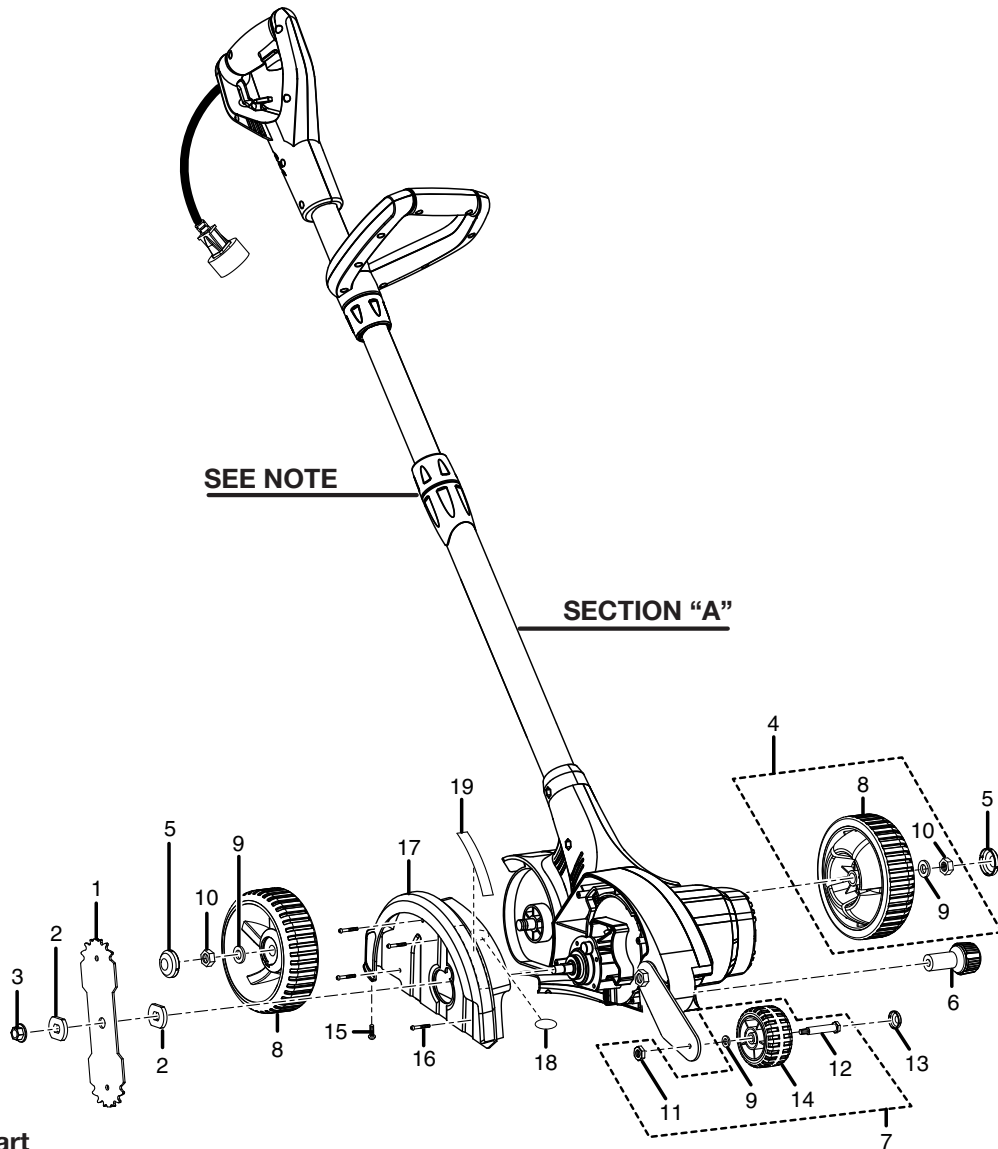


For Parts Call 606-678-9623 or 606-561-4983

**HOMELITE  
ELECTRIC EDGER  
MODEL NO. UT45100  
REPAIR SHEET**

[www.mymowerparts.com](http://www.mymowerparts.com)

**HOMELITE ELECTRIC EDGER – MODEL NUMBER UT45100**



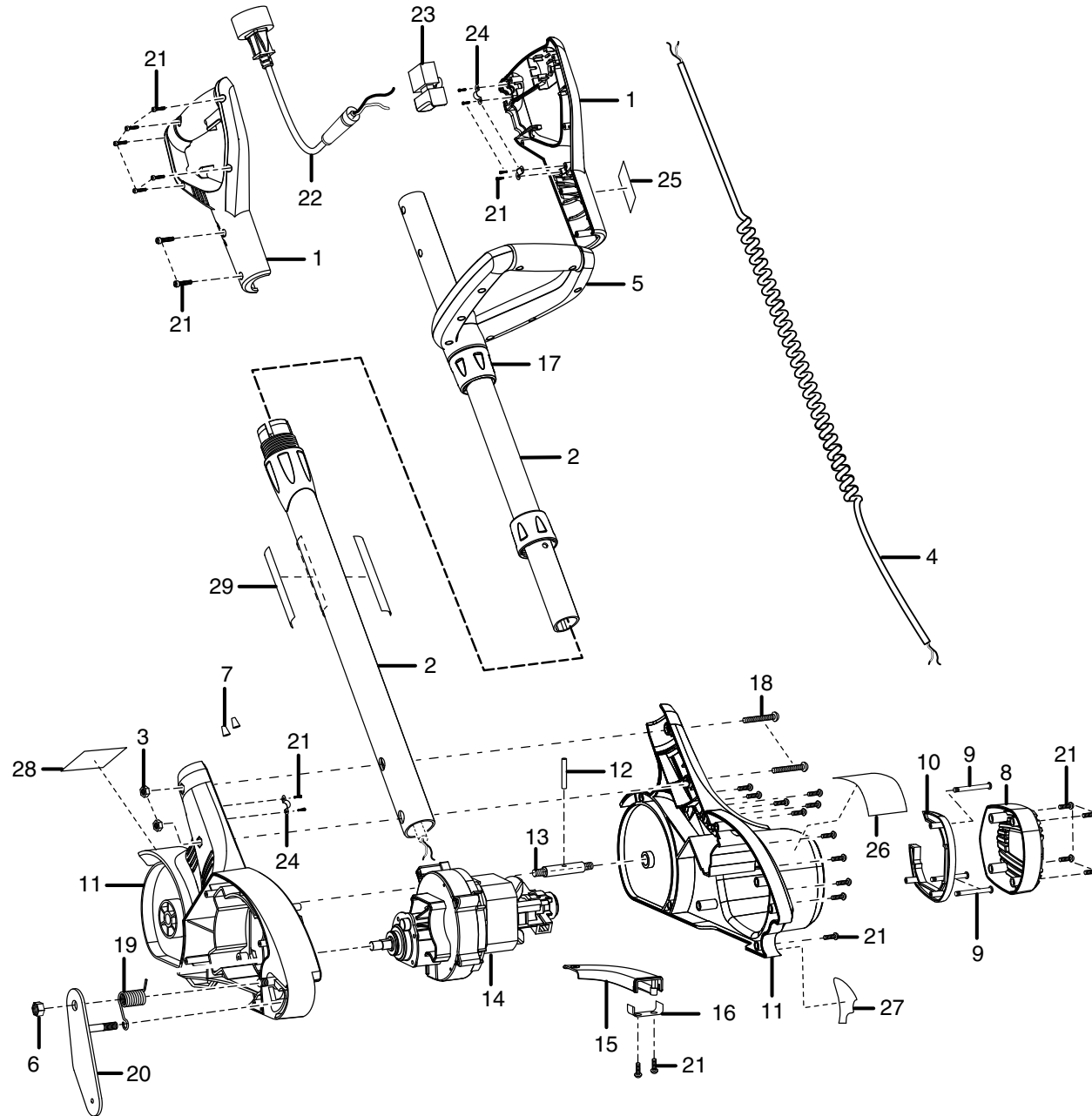
Key No.	Part Number	Description	Qty.
1	33301261G	Blade.....	1
2	3330418G	Blade Washer.....	2
3	3221037G	Blade Nut (M10).....	1
4	31202261G	Rear Wheel Set (Incl. Key Nos. 8-10).....	1
5	34117261G	Rear Wheel Cap.....	2
6	34106261G	Depth Adjustment Knob.....	1
7	31203261G	Front Wheel Set (Incl. Key Nos. 9, 11-12 and 14).....	1
8	31204261G	Wheel.....	2
9	33304261G	* Washer (M8).....	3
10	32208261G	* Lock Nut (M8).....	2
11	32907152G	* Lock Nut (M6).....	1
12	33283261G	Front Wheel Axle.....	1
13	34188261G	Front Wheel Cap.....	1
14	34111261G	Front Wheel.....	1
15	3220505G	* Screw (M4 x 16 mm).....	1
16	3220133G	* Screw (M4 x 50 mm).....	4
17	31108261G	Guard Assembly (Includes Key Nos. 18-19).....	1
18	38108261G	Warning Label.....	1
19	38104261G	Cutting Edge Label.....	1

**NOTE: The assembly shown represents an important part of the Double Insulated System. To avoid the possibility of alteration or damage to the system, service should be performed by your nearest Homelite authorized service dealer.**

\* Standard Hardware Item – May Be Purchased Locally

HOMELITE ELECTRIC EDGER - MODEL NUMBER UT45100

SECTION "A"



Section "A" represents an important part of the double insulated system of this tool. Any repair to this tool requires dielectric testing to insure customer safety and to comply with company requirements.

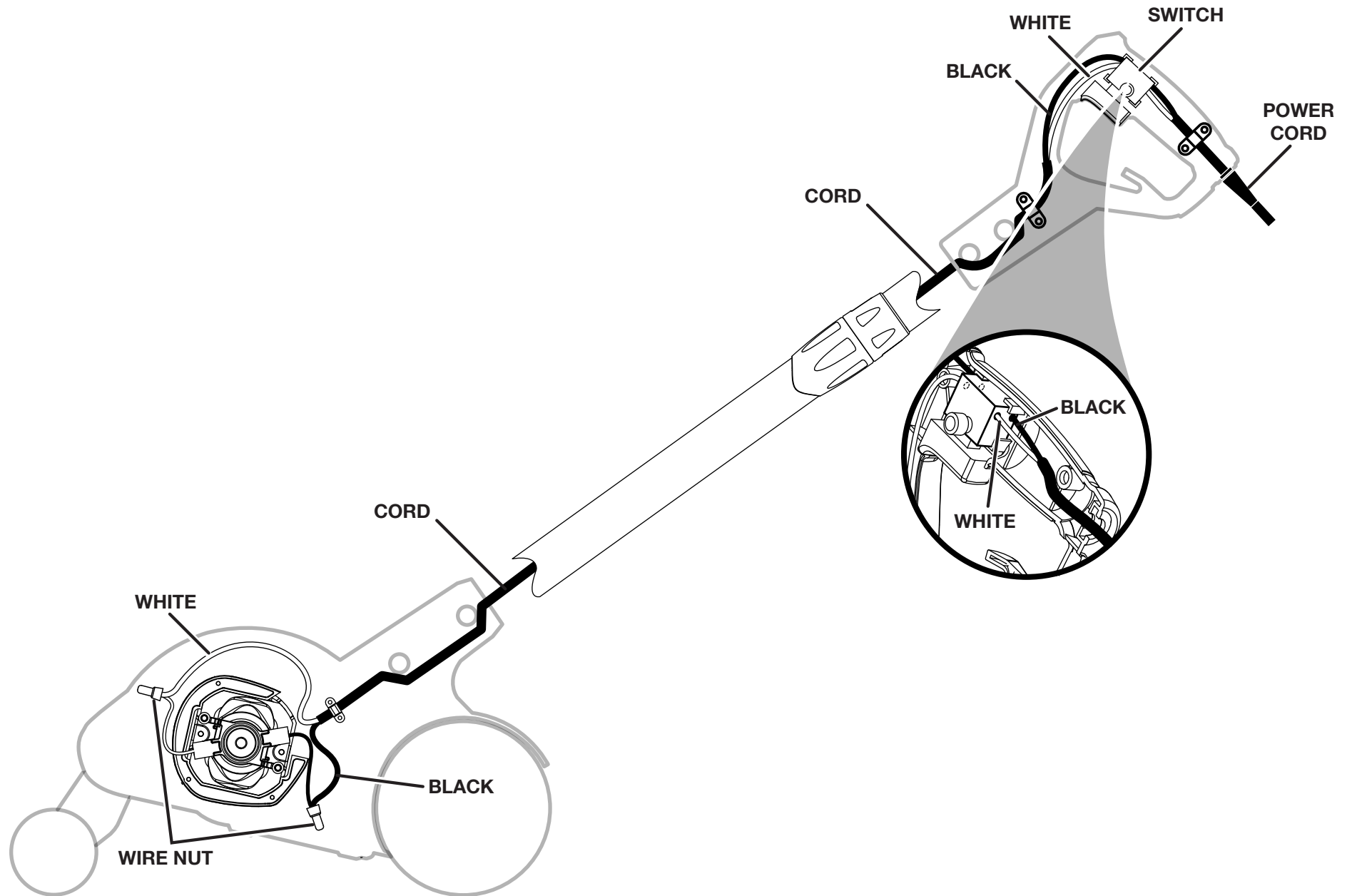
HOMELITE ELECTRIC EDGER – MODEL NUMBER UT45100

**PARTS LIST**

KEY NO.	PART NUMBER	DESCRIPTION	QTY	KEY NO.	PART NUMBER	DESCRIPTION	QTY
1	31302261G	Handle Assembly .....	1	15	34108261G	Air Outlet .....	1
2	31102261G	Pole Assembly.....	1	16	34116261G	Air Outlet Cover.....	1
3	32907152G	* Hex Nut (M6) .....	2	17	34114152G	Collar .....	1
4	36901261G	Spring Cord Assembly .....	1	18	32901163G	* Screw (M6 x 41 mm) .....	2
5	31303261G	Auxiliary Handle Assembly.....	1	19	33401261G	Torsion Spring .....	1
6	32208261G	* Lock Nut (M8).....	1	20	33302261G	Front Wheel Arm .....	1
7	36511154G	* Wire Nut .....	2	21	3220505G	* Screw (M4 x 16 mm) .....	30
8	34104261G	Motor Cover .....	1	22	36401261G	Power Cord .....	1
9	3220351G	* Screw (M4 x 30 mm) .....	3	23	36301261G	Switch .....	1
10	34105261G	Air Damper .....	1	24	3410302G	Cord Clamp.....	3
11	34101261G	Housing Assembly .....	1	25	38103261G	Handle Label .....	1
12	32988261G	Axle Pin .....	1	26	38101261G	Data Label .....	1
13	33201261G	Axle .....	1	27	38107261G	Depth Adjustment Label .....	1
14	31101261G	Motor Assembly.....	1	28	38106261G	Curb Runner Label.....	1
				29	38102261G	Logo Label .....	2
					987000304	Operator's Manual	
					2-28-08 (REV:01)		

\* Standard Hardware Item – May Be Purchased Locally

HOMELITE ELECTRIC EDGER - MODEL NUMBER UT45100



WIRING DIAGRAM