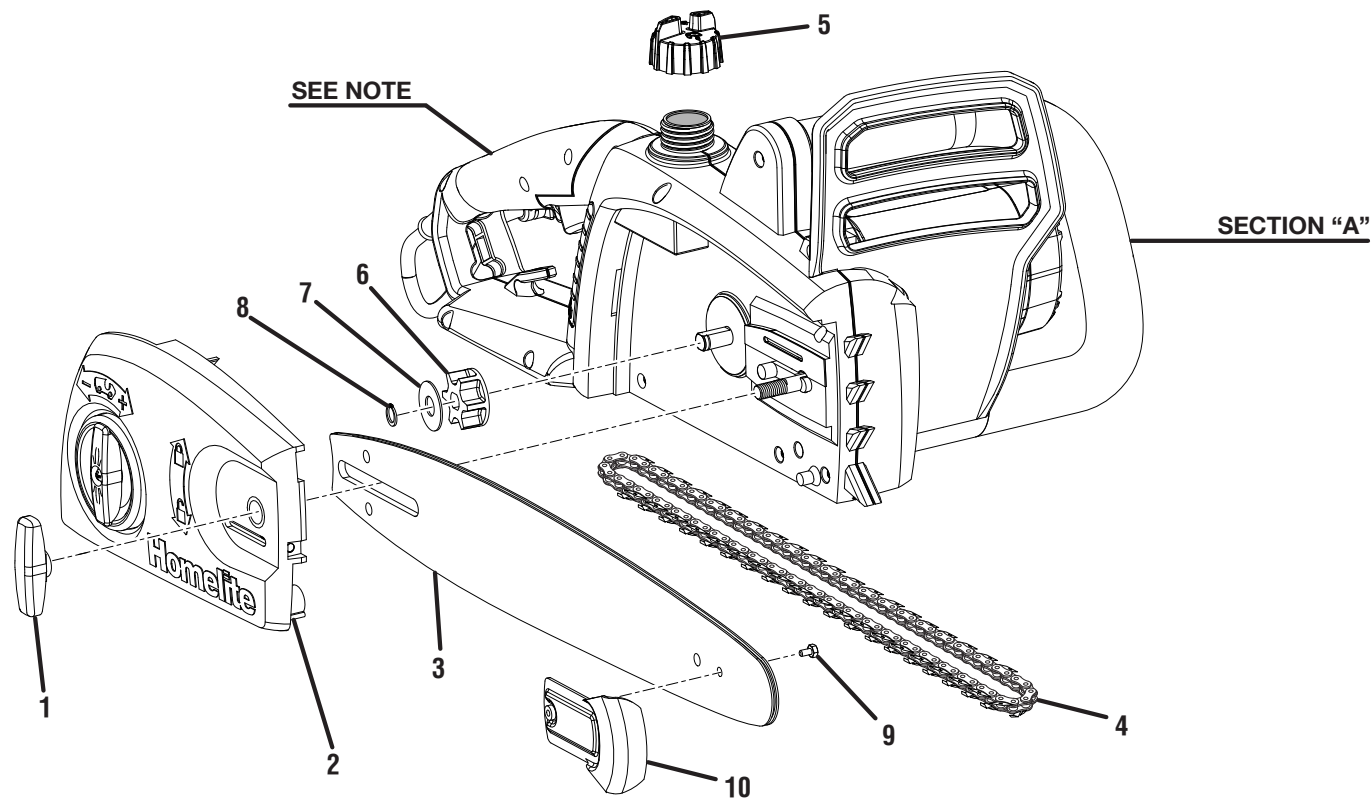


For Parts Call 606-678-9623 or 606-561-4983

**HOMELITE
ELECTRIC CHAIN SAW
MODEL NOS. UT43100 AND UT43120
REPAIR SHEET**

HOMELITE CHAIN SAW - MODEL NUMBERS UT43100 AND UT43120



PARTS LIST

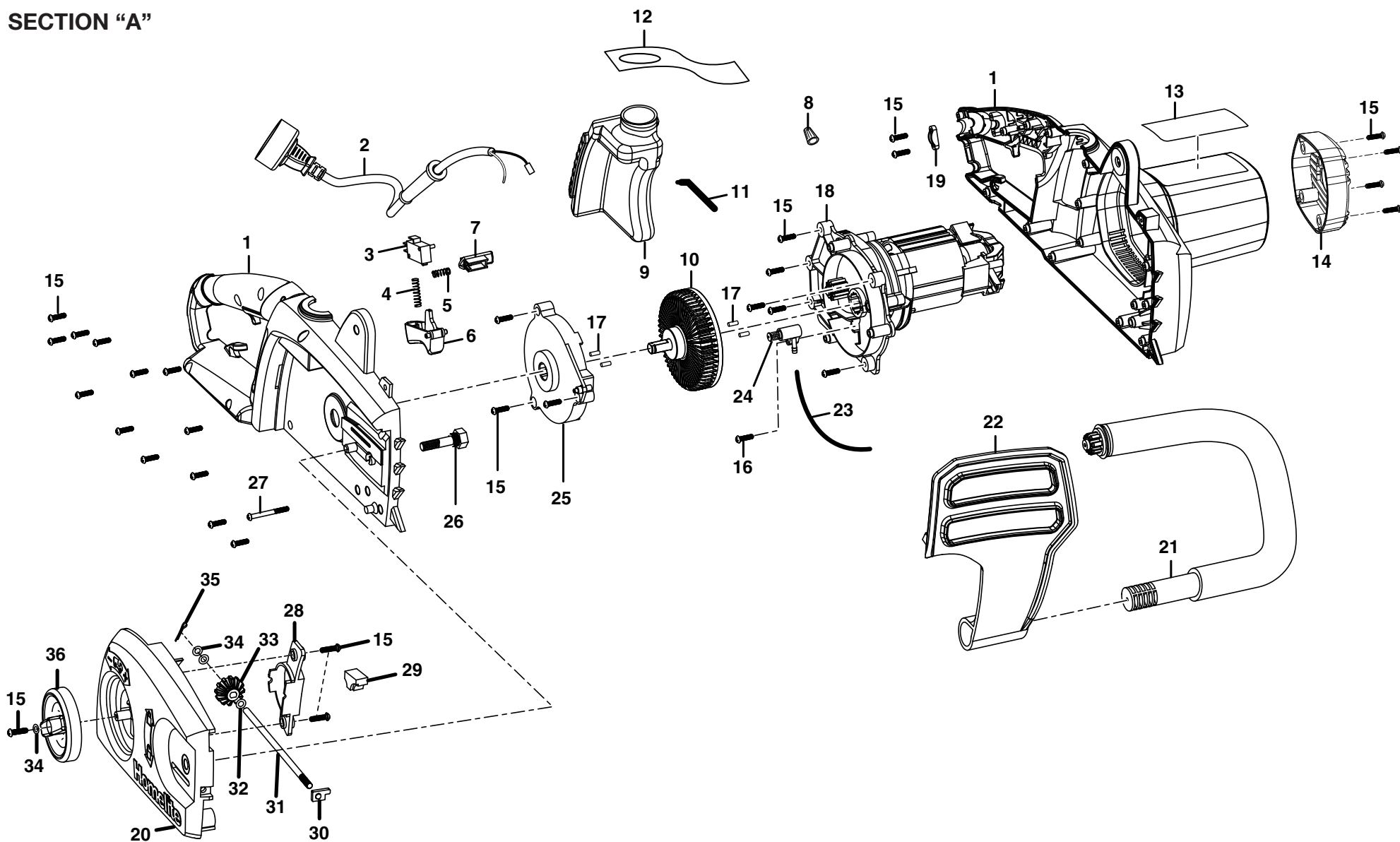
KEY NO.	PART NUMBER	DESCRIPTION	QTY	KEY NO.	PART NUMBER	DESCRIPTION	QTY
1	34114154G	Chain Cover Lock Knob.....	1	6	33902102G	Sprocket.....	1
2	31105154G	Chain Cover Assembly.....	1	7	33302102G	Washer.....	1
3	310625001	Guide Bar (UT43100 — 14 in. with SAFE-T-TIP).....	1	8	32901154G	Retaining Ring.....	1
	310626001	Guide Bar (UT43120 — 16 in. with SAFE-T-TIP).....	1	9	660640001	Screw w/Washer.....	1
4	901212001	Chain (UT43100 — .375 x 52 link, 14 in.).....	1	10	308949001	SAFE-T-TIP.....	1
	901212002	Chain (UT43120 — .375 x 56 link, 16 in.).....	1		34148154G	Scabbard (Not Shown, UT43120 only).....	1
5	34109154G	Oil Reservoir Cap.....	1		31201154G	Soft Case (Not Shown, UT43120 only).....	1

NOTE: The assembly shown represents an important part of the Double Insulated System. To avoid the possibility of alteration or damage to the system, service should be performed by your nearest Homelite authorized service dealer.

* Standard Hardware Item – May Be Purchased Locally

HOMELITE CHAIN SAW - MODEL NUMBERS UT43100 AND UT43120

SECTION "A"



Section "A" represents an important part of the double insulated system of this tool. Any repair to this tool requires dielectric testing to insure customer safety and to comply with company requirements.

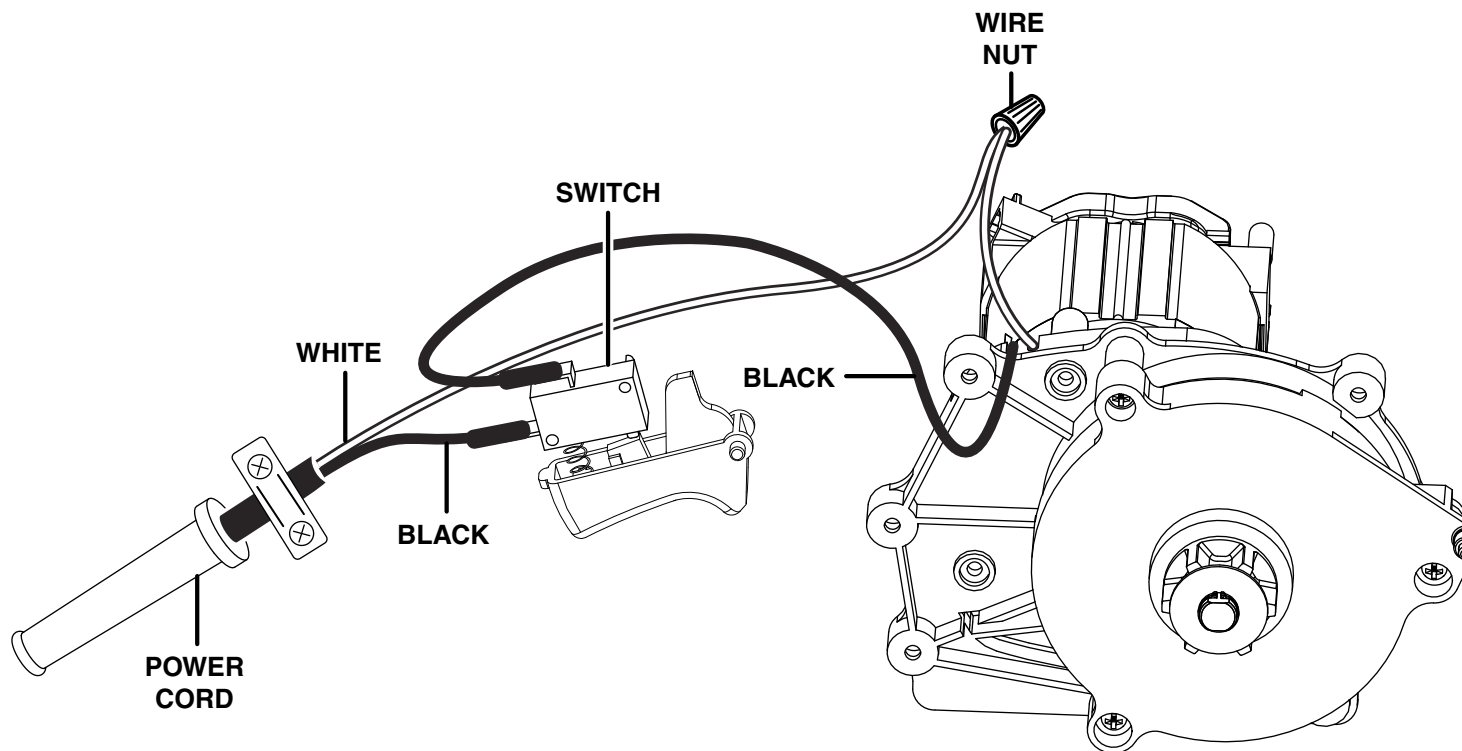
HOMELITE CHAIN SAW – MODEL NUMBERS UT43100 AND UT43120

The model number will be found on a plate attached to the motor housing. Always mention the model number in all correspondence regarding your **CHAIN SAW** or when ordering repair parts.

PARTS LIST FOR SECTION “A”

KEY NO.	PART NUMBER	DESCRIPTION	QTY	KEY NO.	PART NUMBER	DESCRIPTION	QTY
1	31301154G	Housing Assembly	1	19	3410302G	Cord Clamp	1
2	36401154G	Power Cord.....	1	20	34116154G	Chain Cover.....	1
3	36301154G	Switch	1	21	34120154G	Front Handle	1
4	33203154G	Trigger Spring	1	22	34110154G	Guard.....	1
5	33204154G	Lock-off Spring.....	1	23	34117102G	Oil Tube, Outlet	1
6	34106154G	Trigger	1	24	34901154G	Oil Pump	1
7	34107154G	Lock-off Button.....	1	25	34105154G	Ring Gear Cover	1
8	36511154G	Wire Nut.....	1	26	33205154G	Chain Bar Stud	1
9	31208261G	Oil Reservoir Assembly.....	1	27	32201154G	* Screw (M4.2 x 45 mm).....	1
10	34118154G	Ring Gear Assembly	1	28	34119154G	Gear Cover.....	1
11	34201154G	Oil Tube, Inlet.....	1	29	34208154G	Rubber Pad.....	1
12	38202154G	Hang Tang.....	1	30	33311154G	Adjustment Pin	1
13	38101153G	Data Label (UT43100).....	1	31	33210154G	Shaft	1
	38101154AG	Data Label (UT43120).....	1	32	33320154G	Washer	1
14	34101153G	Motor Cap (UT43100).....	1	33	34117154G	Adjustment Gear.....	1
	34103154G	Motor Cap (UT43120).....	1	34	3290408G	Washer	3
15	3220313G	* Screw (M4 x 14 mm).....	30	35	32901153G	Cotter Pin.....	1
16	3220348G	* Screw (M3.8 x 14 mm).....	1	36	34121154G	Adjustment Knob.....	1
17	34210154G	Rubber Pin.....	4		987000287	Operator's Manual	
18	36101153G	Motor Assembly (UT43100).....	1		4-16-08		
	36101154G	Motor Assembly (UT43120).....	1		(Rev.02)		

* Standard Hardware Item – May Be Purchased Locally



WIRING DIAGRAM