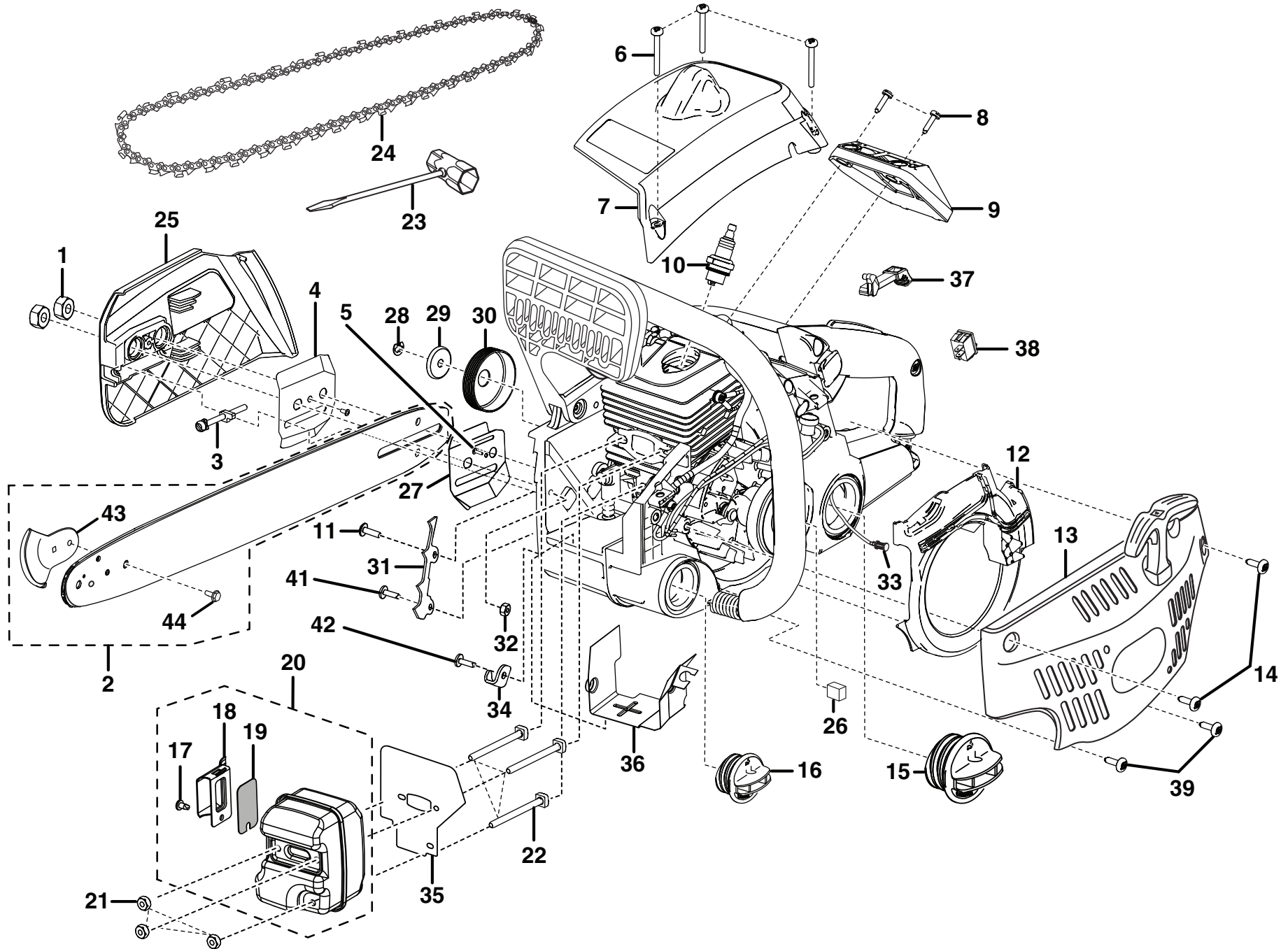


For Parts Call 606-678-9623 or 606-561-4983

HOMELITE
33cc CHAIN SAW
MODEL NOS. UT10514 & UT10516
REPAIR SHEET

HOMELITE 33cc CHAIN SAW - MODEL NUMBERS UT10514 & UT10516



HOMELITE 33cc CHAIN SAW – MODEL NUMBERS UT10514 & UT10516

The model number will be found on a plate attached to the engine housing. Always mention the model number in all correspondence regarding your **CHAIN SAW** or when ordering repair parts.

PARTS LIST

KEY NO.	PART NUMBER	DESCRIPTION	QTY	KEY NO.	PART NUMBER	DESCRIPTION	QTY
1	671076001	Guide Bar Nut (5/16-18)	2	24	901212001	Chain (UT10514 — .375 x 52 link, 14 in.)	1
2	310625001	Guide Bar (UT10514 — 14 in. with SAFE-T-TIP) (Includes Key Nos. 43, 44).....	1		901212002	Chain (UT10516 — .375 x 56 link, 16 in.)	1
	310626001	Guide Bar (UT10516 — 16 in. with SAFE-T-TIP) (Includes Key Nos. 43, 44).....	1	25	300957015	Chain Cover Assembly	1
3	308116001	Guide Bar Adjustment Screw	1	26	900844001	Pre-Filter.....	1
4	631038001	Outer Guide Plate.....	1	27	631036001	Inner Guide Plate.....	1
5	660619001	* Screw (6-19 x 1/2 in. T.F.)	1	28	671103001	E-Ring.....	1
6	660636001	* Screw (10-16 x 1-1/2 in. Special)	3	29	631060001	Cupped Washer.....	1
7	511726001	Top Cover	1	30	300958001	Sprocket Drum and Bearing Assembly (.375 chain)...	1
8	660617001	* Screw (8-16 x 5/8 in. Torx T.F.)	2	31	631039001	Spike Bar	1
9	511708001	Air Filter Cover.....	1	32	678027002	* Lock Nut (10-24).....	1
10	870174001	Spark Plug (Champion RCJ6Y)	1	33	300759005	Fuel Filter	1
11	660625001	* Screw (10-24 x 5/8 in. Torx Pan Hd.).....	1	34	631035001	Chain Catcher.....	1
12	511727001	Fan Housing Baffle	1	35	901210001	Muffler Gasket	1
13	308067001	Starter Assembly	1	36	638455001	Heat Shield	1
14	660632001	* Screw (10-14 x 5/8 in., Truss Hd.)	2	37	511709001	Choke Knob.....	1
15	300948001	Fuel Cap Assembly	1	38	760338001	Ignition Switch.....	1
16	300949001	Oil Cap Assembly	1	39	660637001	* Screw (10-14 x 7/8 in., Truss Hd.)	2
17	660624001	* Screw (8-32 x 5/16 in.)	1	40	580438003	Scabbard (UT10514 — 14 in., Not Shown)	1
18	638467001	Muffler Deflector	1		518061003	Scabbard (UT10516 — 16 in., Not Shown)	1
19	638673001	Spark Screen.....	1	41	660621001	* Screw (10-24 x 1/2 in.)	1
20	309314001	Muffler Assembly (Incl. Key No. 17-19).....	1	42	660618001	* Screw (10-14 x 1/2 in.)	1
21	671079001	* Lock Nut (10-32).....	3	43	308949001	Safety Tip	1
22	660626001	Screw (10-32 x 2-4/5 in., Square Head).....	3	44	660640001	Screw (Hex Head).....	1
23	631055001	Combination Wrench.....	1		987000208	Operator's Manual (960970010)	
					1-30-08		
					(REV:02)		

* STANDARD HARDWARE ITEM – MAY BE PURCHASED LOCALLY

HOMELITE 33cc CHAIN SAW - MODEL NUMBERS UT10514 & UT10516

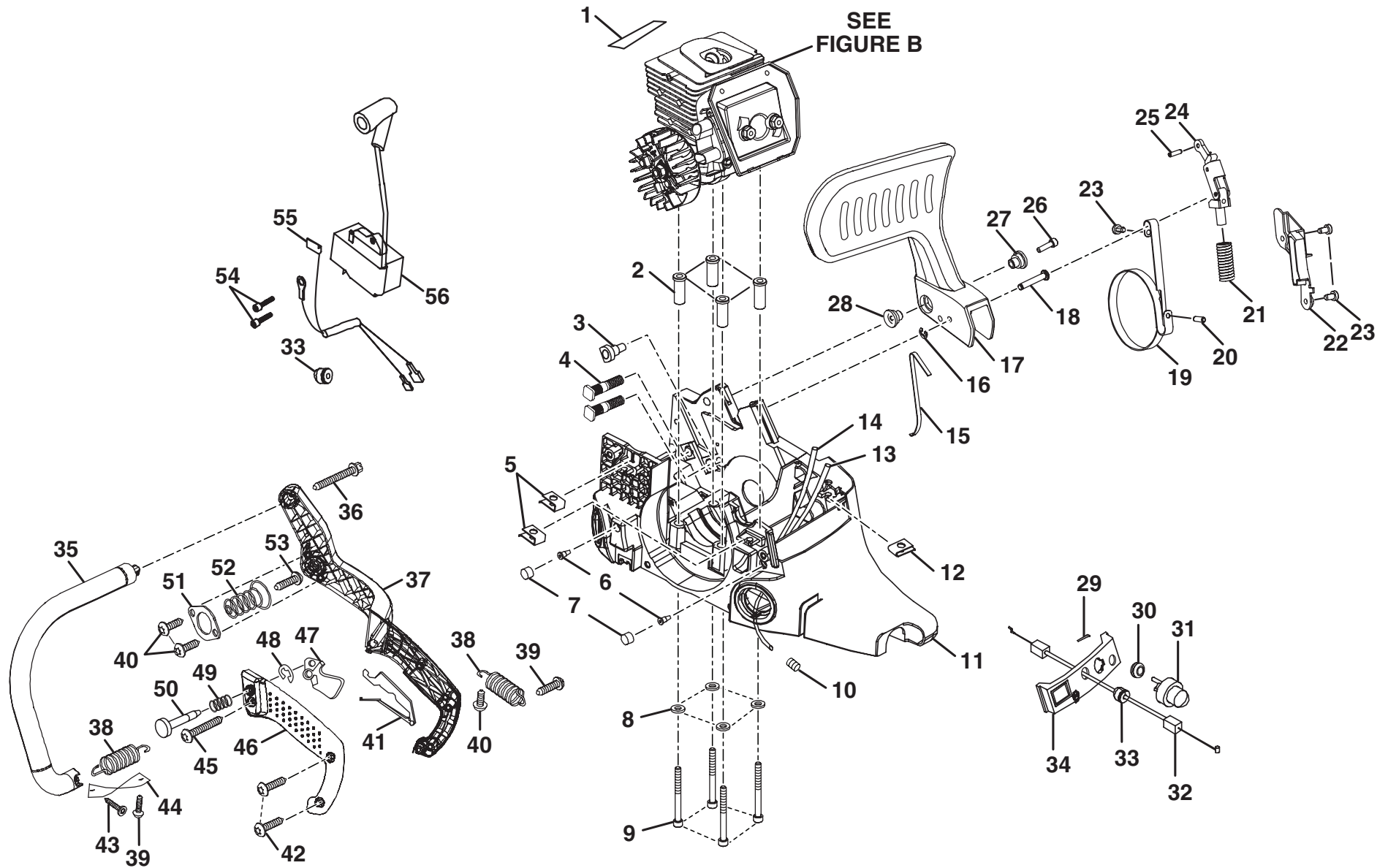


Figure A

HOMELITE 33cc CHAIN SAW – MODEL NUMBERS UT10514 & UT10516

The model number will be found on a plate attached to the engine housing. Always mention the model number in all correspondence regarding your **CHAIN SAW** or when ordering repair parts.

PARTS LIST (FIGURE A)

KEY NO.	PART NUMBER	DESCRIPTION	QTY	KEY NO.	PART NUMBER	DESCRIPTION	QTY
1	700106001	Heat Reflector Tape.....	1	29	631034001	Hair Pin.....	1
2	671087001	Spacer Insert.....	4	30	570219001	Grommet.....	1
3	570226001	Oil Outlet Grommet.....	1	31	300780002	Primer Assembly.....	1
4	660628001	Guide Bar Bolt.....	2	32	900845001	Throttle Cable.....	1
5	671077001	Speed Nut ("U"-type).....	2	33	570227001	Split Grommet.....	2
6	560955001	Duck Bill Valve.....	2	34	511719001	Control Panel.....	1
7	671088001	Element.....	2	35	511724001	Front Handle.....	1
8	671080001	Washer.....	4	36	660631001	* Screw (12-14 x 1.5 in.).....	1
9	660622001	* Screw (10-24 x 2 in.).....	4	37	511721004	Rear Handle.....	1
10	690765001	Hose Clamp.....	1	38	671101001	Extension Spring.....	2
11	300951001	Chassis Assembly.....	1	39	660632001	* Screw (10-14 x 5/8 in.).....	2
12	671077002	Speed Nut ("U"-type).....	1	40	660618001	* Screw (10-14 x 1/2 in.).....	3
13	570247002	Rubber Tubing/07454-22.....	1	41	511710001	Lockout Throttle.....	1
14	570247003	Rubber Tubing/07454-34.....	1	42	660629001	* Screw (10-14 x 3/4 in.).....	2
15	631052001	Spring.....	1	43	660719001	* Screw (10-14 Thread Twin Helix).....	1
16	671075001	Retaining Ring.....	1	44	631050001	Spring Retainer.....	1
17	511723010	Handguard.....	1	45	660633001	* Screw (10-14 x 1 3/8 in.).....	1
18	620282001	Handguard Actuating Pin.....	1	46	511722003	Handle Cover.....	1
19	631063002	Chain Brake Band Kit.....	1	47	511712001	Trigger Throttle.....	1
20	671095001	Spring Pin (Big).....	1	48	671074001	E-Ring.....	1
21	678113001	Spring.....	1	49	671073001	Spring.....	1
22	511720002	Chain Brake Cover.....	1	50	511711001	Throttle Lock Pin.....	1
23	660634001	* Screw (8-16 x 5/16 in.).....	3	51	631051001	Isolator Plate.....	1
24	300954001	Chain Brake Link Assembly.....	1	52	671098001	Isolator Spring.....	1
25	671099001	Spring Pin (Small).....	1	53	660630001	* Screw (10-24 x 5/8 in.).....	1
26	660635001	* Screw (8-32 x 5/8 in.).....	1	54	660639001	* Screw (8-32 x 5/8 in.).....	2
27	671096001	Pivot (Right Hand).....	1	55	290195002	Ignition Switch Harness.....	1
28	671097001	Pivot (Left Hand).....	1	56	300953003	Ignition Kit.....	1

* STANDARD HARDWARE ITEM – MAY BE PURCHASED LOCALLY

HOMELITE 33cc CHAIN SAW - MODEL NUMBERS UT10514 & UT10516

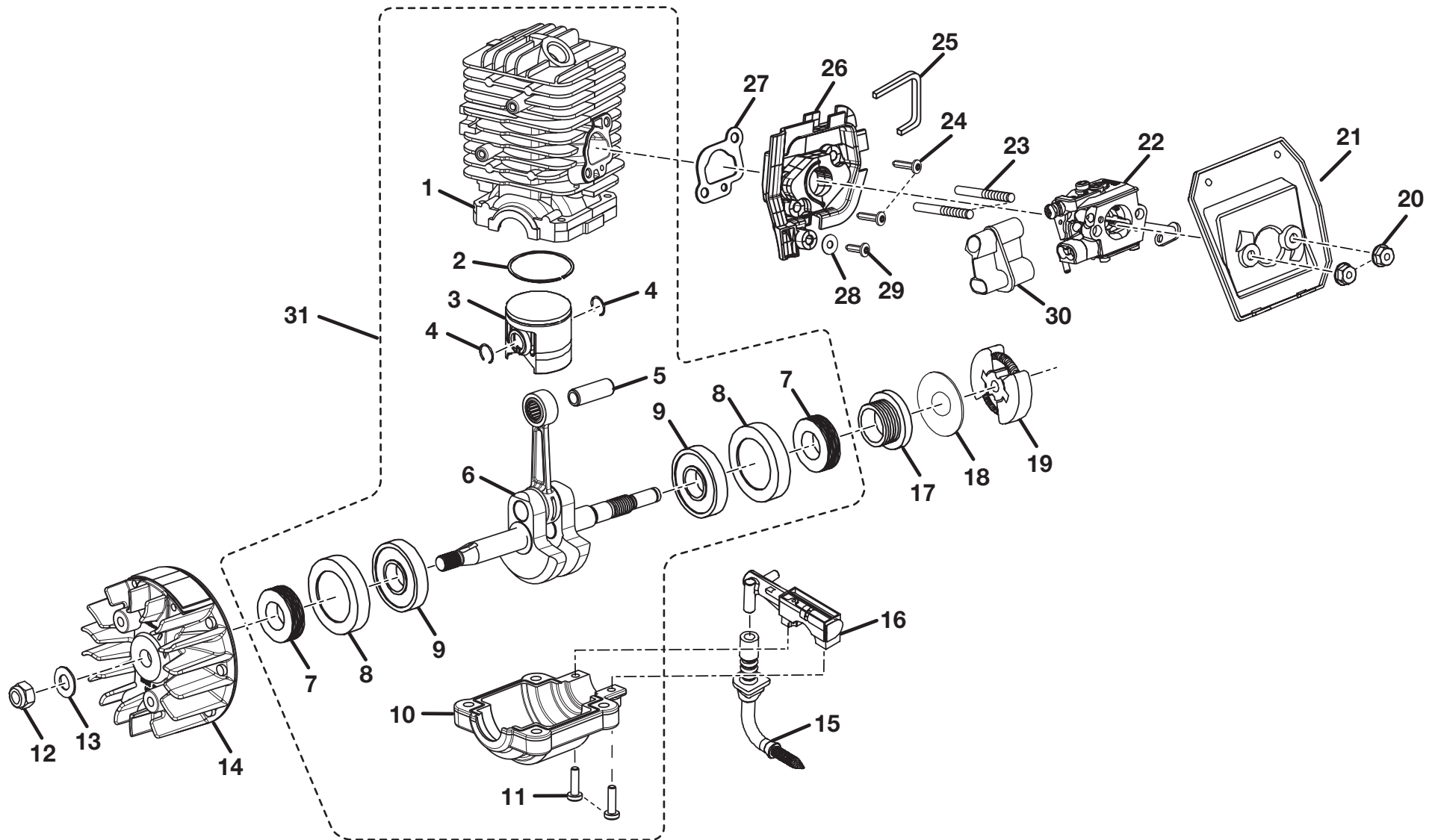


Figure B

HOMELITE 33cc CHAIN SAW – MODEL NUMBERS UT10514 & UT10516

The model number will be found on a plate attached to the engine housing. Always mention the model number in all correspondence regarding your **CHAIN SAW** or when ordering repair parts.

PARTS LIST (FIGURE B)

KEY NO.	PART NUMBER	DESCRIPTION	QTY	KEY NO.	PART NUMBER	DESCRIPTION	QTY
1	640819015	Cylinder	1	18	631061001	Thrust Washer	1
2	690161005	Piston Ring	1	19	300960003	Clutch Assembly	1
3	640995001	Piston	1	20	678033001	* Flange Nut (10-24).....	2
4	671082001	Retaining Ring	2	21	511707001	Air Filter Plate	1
5	620277001	Piston Pin	1	22	300939002	Carburetor Assembly.....	1
6	300943005	Crankshaft Assembly	1	23	660638001	* Screw (10-24 x 2 1/8 in.)	2
7	570220001	Shaft Seal	2	24	660616002	* Screw (10-24 x 7/8 in.)	2
8	570221001	Bearing Case.....	2	25	900850001	Spacer Seal	1
9	671089002	Ball Bearing	2	26	511706001	Carburetor Spacer.....	1
10	640818001	Crankcase	1	27	900842001	Heat Dam Gasket	1
11	660627001	* Screw (8-32 x 5/8 in.)	2	28	671072001	Flat Washer.....	1
12	678123001	Nut (5/14-24)	1	29	660618001	* Screw (10-14 x 1/2 in.)	1
13	631049001	Flat Washer.....	1	30	511705001	Carburetor Grommet	1
14	300952002	Flywheel Assembly.....	1	31	309891002	Short Block Assembly (Inc. Key Nos. 1~11).....	1
15	300950001	Oil Intake Tube Assembly	1				
16	300945001	Oil Pump Assembly	1				
17	610389001	Left Hand Worm	1				

* STANDARD HARDWARE ITEM – MAY BE PURCHASED LOCALLY