

# Homelite®

## PARTS LIST

ST155v

UT20741

ST155i (CKD)

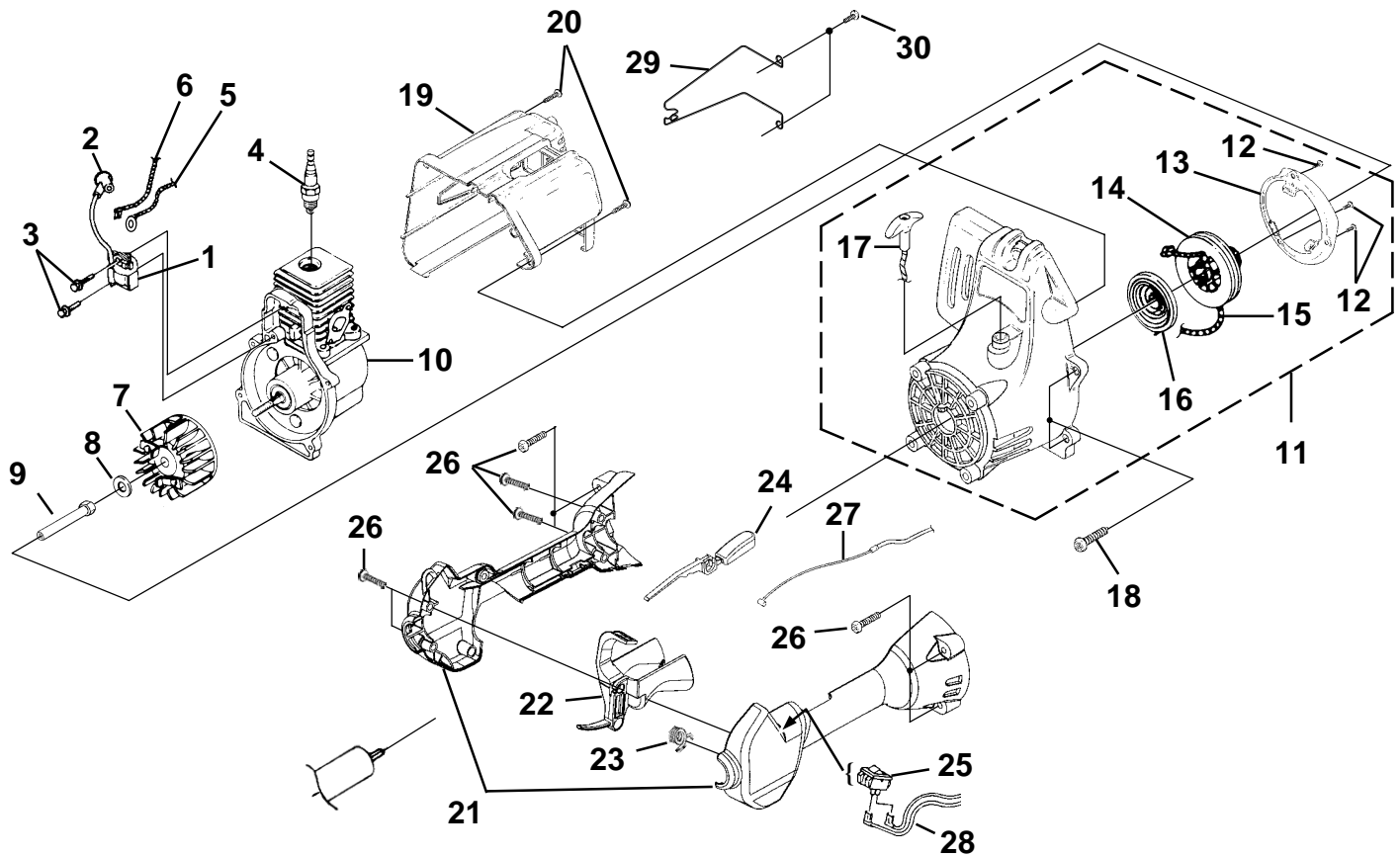
UT20746

## STRING TRIMMER

P/N PS02317

All Models

IGNITION - ROTOR - STARTER



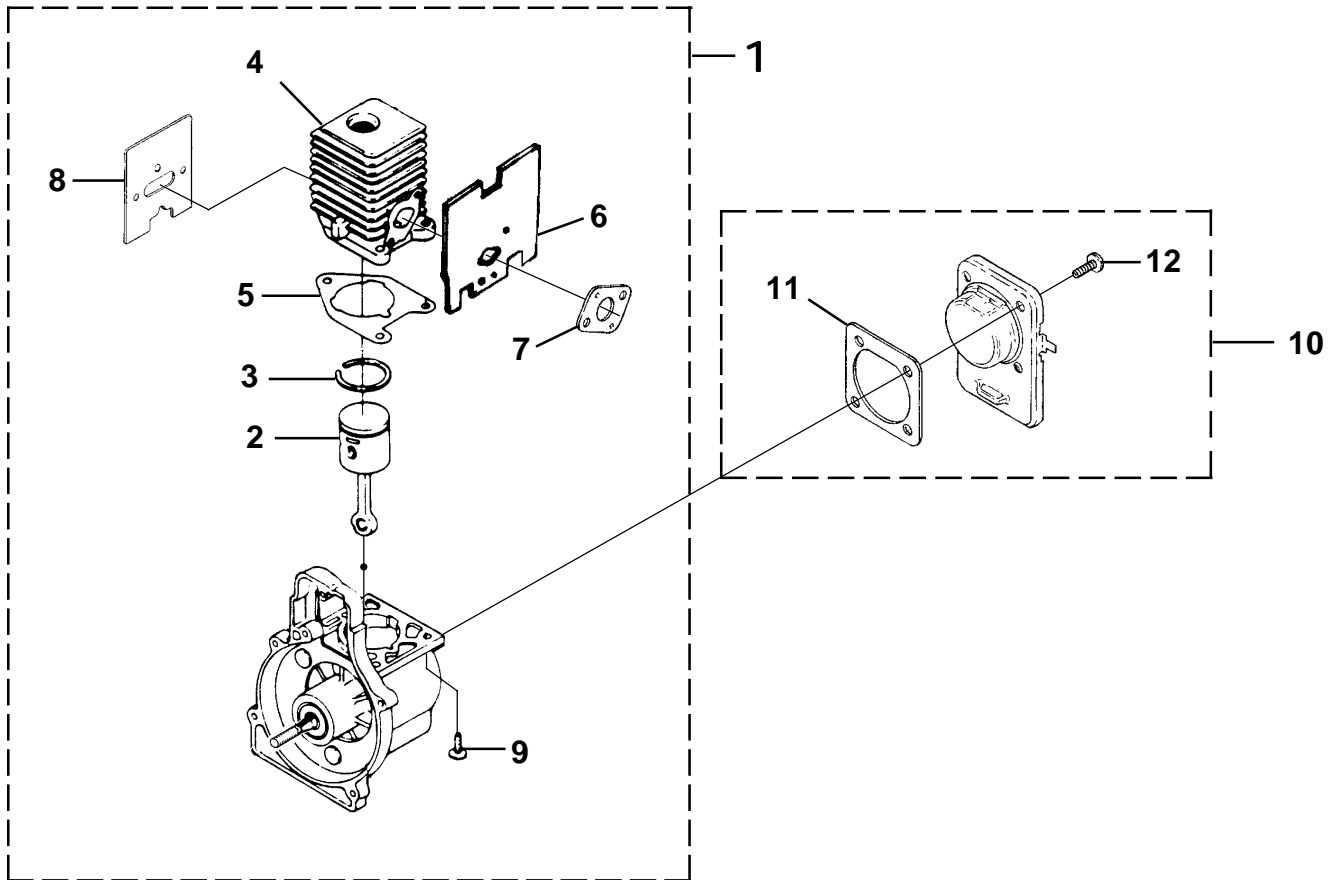
No.	Part No.	Description	Qty.
1	94711 CS	MODULE-Ignition	1
2	A 33055	TERMINAL & COVER	1
3	82540	SCREW-Taptite (8-32 X 1")	2
4	79252	SPARK PLUG - Resistor	1
5	A 06964	LEAD-Ground	1
6	A 06963	LEAD-Electrical	1
7	UP 03009	ROTOR KIT	1
8	95479 A	WASHER-Flat	1
9	98795 A	CONNECTOR-Drive	1
10	UP 03116	SHORT BLOCK (See Engine Internal)	1
11	UP 00014	COMPLETE STARTER ASSEMBLY	1
12	82546	SCREW-Taptite (8-16 X 1/2")	3
13	UP 03013	BAFFLE-Air	1
14	98770 A	PULLEY-Starter	1
15	97899 02	ROPE-Starter (42")	1
16	A 98773 A	SPRING & CONTAINER	1
17	PS 00179	GRIP-Starter	1
18	82538	SCREW-Taptite (10-24 X 3/4")	4
19	UP 00023	HOUSING-Rear Kit	1
20	82537	SCREW-Taptite (10-14 X 7/8")	2
21	UP 03114	CONTROL HANDLE ASSY.	1
22	UP 03207	TRIGGER-Throttle	1
23	UP 03210	SPRING	1
24	UP 03173	THROTTLE INTERLOCK	1
25	07385	SWITCH	1
26	82589	SCREW-Taptite (10-14 X 1")	9
27	UP 03172	CABLE-Throttle	1
28	UP 03174	LEAD-Electrical	1
29	PS 00218	GUARD-Muffler	1
30	82541	SCREW-Thread Forming (10-14 X 1/2")	2

Torque Specs			
Item No.	In/Lbs	Nm	Required Loctite
3	30-40	3.4-4.5	Blue 242
4	120-180	13.6-20.3	
9	100-150	11.3-16.9	
12	10-20	1.1-2.3	
18	30-40	3.4-4.5	
26	30-50	3.4-5.6	
30	5-20	.6-2.3	

Warranty Flat Rate		
Job	Description	Time/Hr.
FA11	Ignition Mod.	.3
FA12	Ground Lead	.3
FA17	Ignition Switch Leads	.4
FG10	Starter Assy.	.6
FD12	Engine Housing, Rear	.6
FF13	Trigger, Throttle cable	.3
FC12	Clutch Assy.	.4

All Models

## ENGINE INTERNAL



No.	Part No.	Description	Qty.
1	●UP 03116	SHORT BLOCK	1
2	●UP 00768	PISTON & ROD ASSEMBLY	1
3	PS 01359	RING-Piston	1
4	●UP 07145	CYLINDER ASSY.	1
5	04388 B	GASKET-Cylinder	1
6	06900 A	GASKET-Heat Dam	1
7	98766 A	GASKET-Carburetor	1
8	09343	GASKET-Muffler	1
9	88084 1	SCREW-Sems (12-24 X 3/4")	3
10	●UP 00019	CRANKCASE COVER ASSEMBLY	1
11	08661	GASKET-Crankcase Cover *	1
12	PS 01565	SCREW-Sems (10-24 X 1/2") *	4

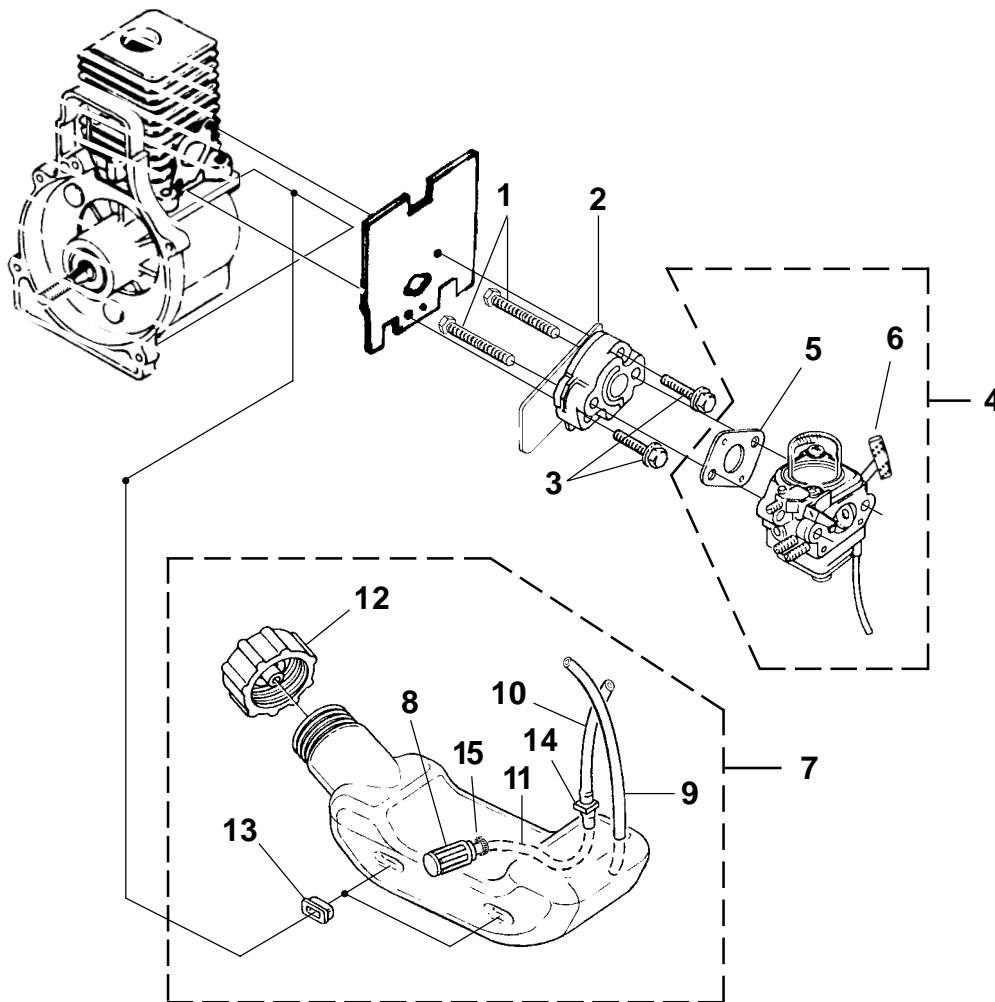
\* Also included in Short block assembly

Torque Specs			
Item No.	In/Lbs	Nm	Required Loctite
9	55-65	6.2-7.3	Red 262
12	35-45	4.0-5.1	Red 262

Warranty Flat Rate		
Job	Description	Time/Hr.
FB10	Partial Rebuild	1.0
FB20	Short Block	1.0
FD25	Crankcase Cover	.3

All Models

CARBURETOR - FUEL TANK



No.	Part No.	Description	Qty.
1	04474	SCREW-Machine (10-24 X 2 1/4")	2
2	98768 A	HEAT DAM	1
3	09322 1	SCREW-Sems (10-24 X 1") *	2
4	•UP00608	CARBURETOR KIT	1
5	98766 A	GASKET-Carburetor	1
6	PS 00236	LEVER-Choke (Zama)	1
7	•UP00020	FUEL TANK ASSY.	1
8	49422	FILTER-Fuel	1
9	01439 18	TUBING-Rubber	1
10	01439 10	TUBING-Rubber	1
11	94772 13	TUBING-Rubber	1
12	UP00106	FUEL CAP	1
13	98792	BUMPER-Rubber	3
14	02067	FITTING-Inline	1
15	98268	CLAMP	1

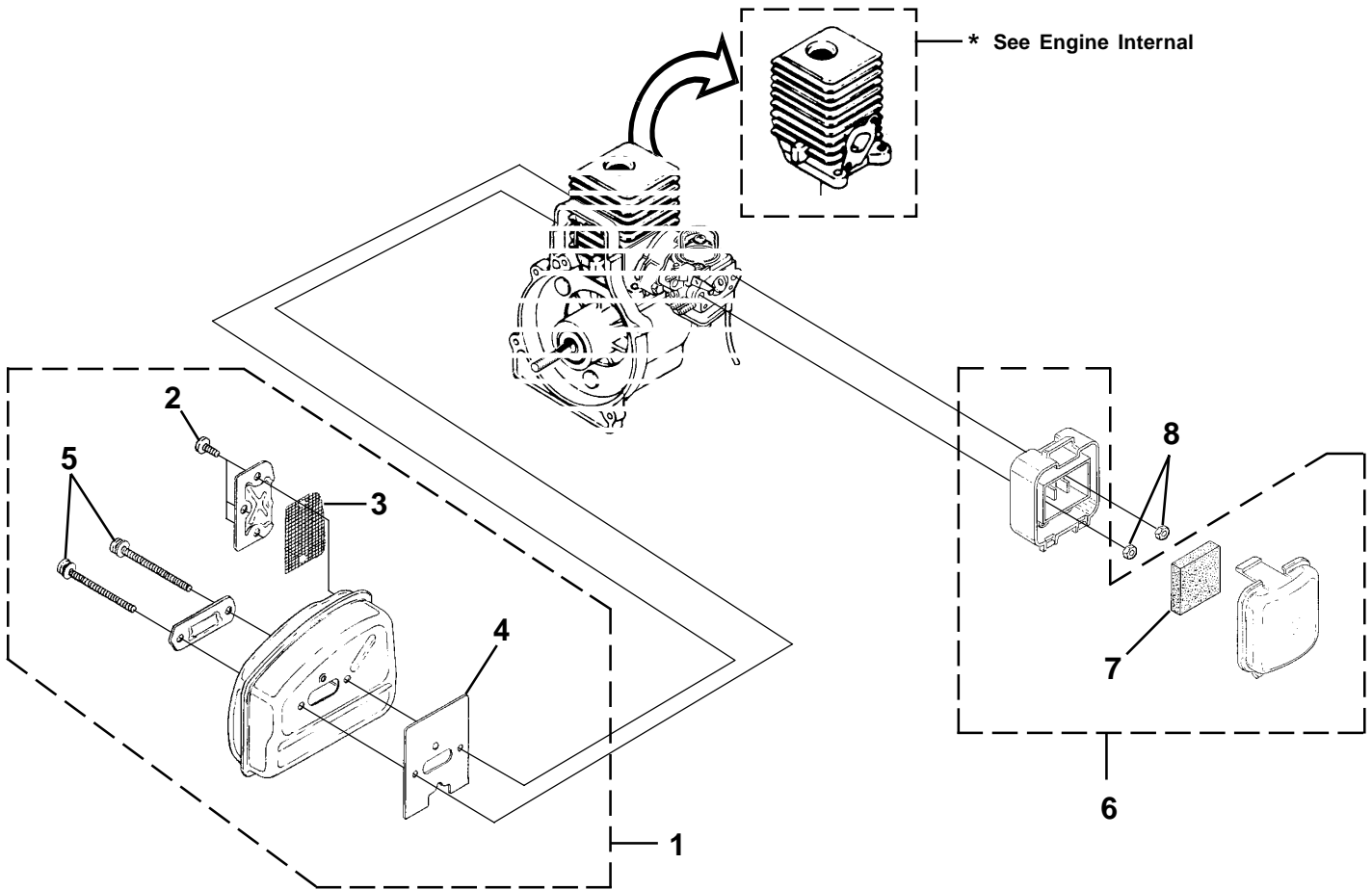
\* Also included in Short block assembly

Torque Specs			
Item No.	In/Lbs	Nm	Required Loctite
3	35-45	4.0-5.1	Red 262

Warranty Flat Rate		
Job	Description	Time/Hr.
FF17	Manifold	.3
FF10	Carburetor Rep.	.3
FF16	Fuel Tank	.3
FF12	Fuel/Return Line	.3

All Models

MUFFLER - AIR CLEANER



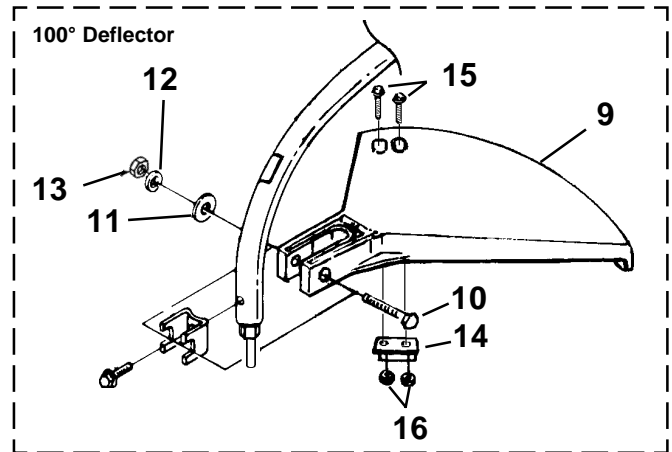
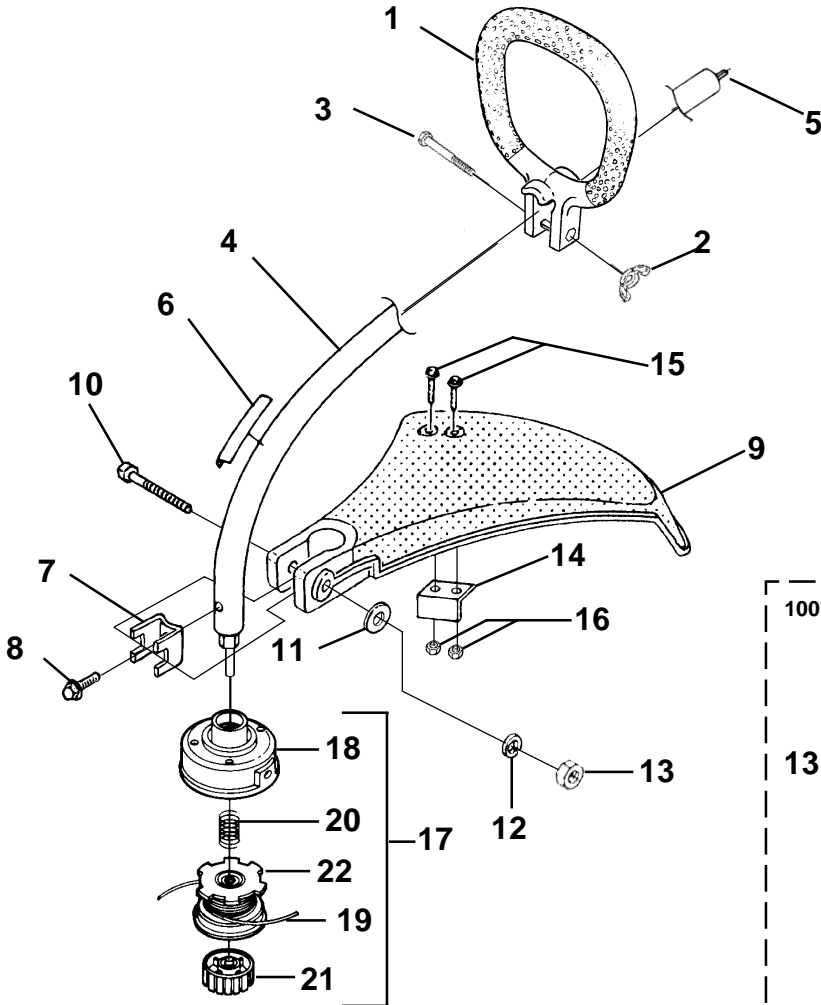
No.	Part No.	Description	Qty.
1	• A 07142 A	MUFFLER ASSY.	1
2	82600	SCREW, Taptite- (8-32 X 3/8")	3
3	06502	SCREEN-Spark	1
4	09343	GASKET-Muffler	1
5	88083	SCREW, Truss Hd. - (10-24 X 2.188)	2
6	• UP00022	AIR FILTER KIT	1
7	98760	FILTER-AIR	1
8	81208	NUT-Hex (10-24)	2

Item No.	Torque Specs		Required Loctite
	In/Lbs	Nm	
2	25-35	2.8-4.0	
5	50-60	5.6-6.8	
8	30-40	3.4-4.5	

Warranty Flat Rate		
Job	Description	Time/Hr.
FB18	Muffler-Replace	.3
FF42	Air Filter Assy.	.2

All Models

SHAFT - SPOOL & STRING - GRASS DEFLECTOR



No.	Part No.	Description	Qty.
1	•UP 03010	HANDLE ASSY-Front	1
2	93992	NUT-Wing, Washer Faced (1/4-20)	1
3	80295	SCREW-Cap Hex Hd.	1
4	•UP 00224	DRIVESHAFT HOUSING ASSY.	1
5	UP 03031	SHAFT-Flexible	1
6	02985	DECAL-Warning	1
7	07928	CLAMP	1
8	88077	SCREW-Sems Hex Hd. (#10-24 X 3/8")	1
9	• A 04705	DEFLECTOR & BLADE KIT (55 Deg.)	1
	• A 04704	DEFLECTOR & BLADE KIT (100 Deg.)	1
10	80295	SCREW-Cap Hex Hd. (10-24 X 2")	1
11	84006	WASHER-Flat (1/4")	1
12	83009	WASHER-Lock (1/4")	1
13	81242	NUT-Hex	1
14	• A 03832	BLADE-Cut-Off	1
15	82531	SCREW-Mech. Hex Hd. (10-24 X 7/8")	2
16	81208	NUT-Hex (10-24)	2
17	•DA 03001 A	STRINGHEAD-Complete	1
18	A 98231 A	HOUSING & EYELET (Dual Line)	1
19	•UP 00145	SPOOL & STRING (.080" Line)	1
20	06713	SPRING-Compression	1
21	DA 98866 A	RETAINER-Spool (R.H. Thread, Black)	1
22	D 06510	STRING - (.080) (195 ft.)	1

Torque Specs			
Item No.	In/Lbs	Nm	Required Loctite
2	5-25	6-2.8	
8	15-25	1.7-2.8	
15	5-25	6-2.8	
16	30-40	3.4-4.5	

Warranty Flat Rate		
Job	Description	Time/Hr.
FM10	.. Stringhead Assy.	.2
FN12	... Driveshaft	.3
FN13	... Driveshaft Hsg.	.3
FN16	... Deflector-Grass	.2
FD20	... Front Handle	.2

ACCESSORIES

GREASE, MULTI-PURPOSE .....	18453	RUBBER TUBING (10 Ft.) .....	94772 99
THREAD LOCKING COMPOUND .....	23488 C	(10 Ft.) .....	01439 99
MODULE AIR GAP SHIM .....	PS 24306	SAFETY GOGGLES .....	A06933
GRASS ANTI-WRAP KIT .....	A 04191	EAR PLUGS .....	07686
STARTER ROPE (250 Ft. Reel) .....	98052 A	NON-SLIP GLOVES .....	A07687
TORX BIT (T27) .....	18566 01	DIGITAL TACHOMETER .....	18416
IGNITION TEST SPARK PLUG .....	JA 31316 4	STRINGHEAD-Complete .....	DA 03001 A
		(.080 Line) (Right Hand Thread) (Black Retainer)	
		REPLACEMENT STRING (3 lb. Box) .....	98011 06
		(.080" Dia.)	

**CUSTOMER ASSISTANCE**

FOR THE LOCATION OF YOUR NEAREST  
**Homelite®**  
SERVICING DEALER  
IN THE UNITED STATES, PUERTO RICO, AND  
THE VIRGIN ISLANDS,  
CALL: 1-800-242-4672  
[www.homelite.com](http://www.homelite.com)

**HEADQUARTERS**

**John Deere Consumer Products, Inc.**  
P. O. BOX 7047  
CHARLOTTE, NC 28241

**OVERSEAS OFFICES**

**EUROPE, AFRICA & MIDDLE-EAST**

**Homelite Netherlands B.V.**  
A Deere & Company Affiliate  
Haverstraat 24  
2153 GB Nieuw Vennepe  
The Netherlands  
tel: +31-252-687342 / fax: +31-252-687993

**FRANCE**

**Homelite Atlantic SARL**  
Groupe Deere & Co.  
Rue du Paradis - BP 231 - Ormes  
45144 Saint-Jean-De-La-Ruelle  
Cedex, France

**AUSTRALIA**

**John Deere Limited**  
A.C.N. 008 671 725  
166-170 Magnesium Drive  
Crestmead, Queensland 4132  
Australia

**CANADIAN OFFICE**

**John Deere Consumer Products Limited**  
**Produits consommateurs**  
**John Deere Limitée**

1850-55e/th Avenue  
Lachine, Québec, Canada H8T 3J5  
1-800-363-5715

John Deere Consumer Products, Inc.

[www.mymowerparts.com](http://www.mymowerparts.com)