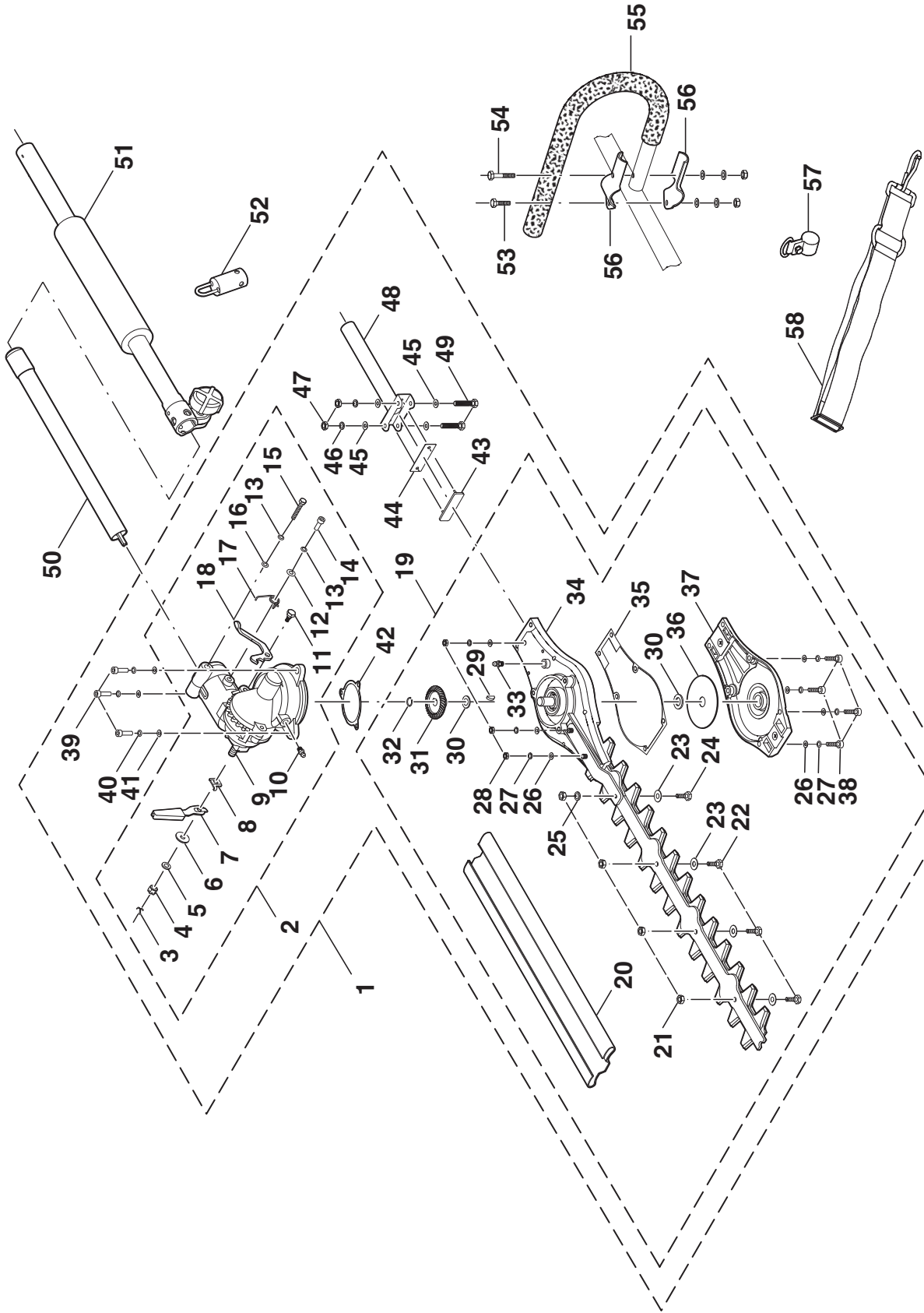


For Parts Call 606-678-9623 or 606-561-4983

**EXPAND-IT
HEDGE TRIMMER ATTACHMENT
MODEL NO. UT15701A
REPAIR SHEET**

EXPAND-IT ARTICULATING HEDGE TRIMMER – MODEL NO. UT15701A



EXPAND-IT ARTICULATING HEDGE TRIMMER – MODEL NO. UT15701A

PARTS LIST

Key No.	Part Number	Description	Qty.
1	099074001001	GEARBOX AND BLADE ASSEMBLY (INCLUDE KEY NOS. 2, 19, 39-49)	1
2	099074001002	UPPER COVER ASSEMBLY (INCLUDE KEY NOS. 3-18)	1
3	099074001003	COTTER PIN	1
4	099074001004	HEX NOTCH NUT (M6)	1
5	099074001005	SPRING WASHER (Ø6)	1
6	099074001006	FLAT WASHER (Ø6)	1
7	099074001007	CLAMPING LEVER	1
8	099074001008	LOCKING PLATE	1
9	099074001009	ARTICULATING GEARBOX ASSEMBLY	1
10	099074001010	OIL CUP	1
11	099074001011	LOCKING SCREW (M5)	1
12	099074001012	FLAT WASHER	1
13	099074001013	SPRING WASHER (Ø5)	2
14	099074001014	INNER HEX COLUMN HEAD SCREW (M5 X 14 mm)	1
15	099074001015	HEX HEAD BOLT (M5 X 30 mm)	1
16	099074001016	FLAT WASHER (Ø5)	1
17	099074001017	RATCHET TORSIONAL SPRING	1
18	099074001018	DETENT	1
19	099074001019	DRIVEN GEAR HOUSING AND BLADE ASSEMBLY W / BACK COVER (INCLUDE KEY NOS. 20-38)	1
20	099074001020	BLADE GUARD	1
21	099074001021	LOCKING NUT (M6)	4
22	099074001022	HEX HEAD BOLT (M6 X 16 mm)	3
23	099074001023	FLAT WASHER (Ø6)	4
24	099074001024	HEX HEAD BOLT (M6 X 22 mm)	1
25	099074001005	SPRING WASHER (Ø6)	1
26	099074001016	FLAT WASHER (Ø5)	7
27	099074001013	SPRING WASHER (Ø5)	7
28	099074001025	HEX NUT (M5)	3
29	099074001026	HALF-ROUND KEY	1
30	099074001027	ADJUST SPACER	2
31	099074001028	DRIVEN BEVEL GEAR	1
32	099074001029	C-RING (Ø10)	1
33	099074001010	OIL CUP	1
34	099074001030	DRIVEN GEAR HOUSING AND BLADE ASSEMBLY W/O BACK COVER	1
35	099074001031	FELT	1
36	099074001032	CIRCLE GUARD PLATE	1
37	099074001033	BACK COVER ASSEMBLY	1
38	099074001034	INNER HEX COLUMN HEAD SCREW (M5 X 20 mm)	4
39	099074001035	INNER HEX COLUMN HEAD SCREW (M5 X 16 mm)	3
40	099074001013	SPRING WASHER (Ø5)	3
41	099074001016	FLAT WASHER (Ø5)	3
42	099074001036	FELT	1
43	099074001037	RUBBER SEAL	1
44	099074001038	METAL PLATE	1
45	099074001016	FLAT WASHER (Ø5)	4
46	099074001013	SPRING WASHER (Ø5)	2
47	099074001025	HEX NUT (M5)	2
48	099074001039	LOWER HANDLE ASSEMBLY	1
49	099074001015	HEX HEAD BOLT (M5 X 30 mm)	2
50	099074001040	LOWER BOOM ASSEMBLY	1
51	099074001041	INTERMEDIAL BOOM ASSEMBLY	1
52	099078001039	HANGER	1
53	099075001009	BOLT ASSEMBLY (SHORT)	1
54	099075001008	BOLT ASSEMBLY (LONG)	1
55	099075001010	J-HANDLE AND GRIP	1
56	099075001007	HANDLE BAR CLAMP	2
57	099075001011	STRAP HANGER	1
58	099075001012	SHOULDER STRAP ASSEMBLY	1
	983000621	OPERATOR'S MANUAL (099074001042)	
	983000621R	REPAIR SHEET (REV: 00)	
	03-07-05		