

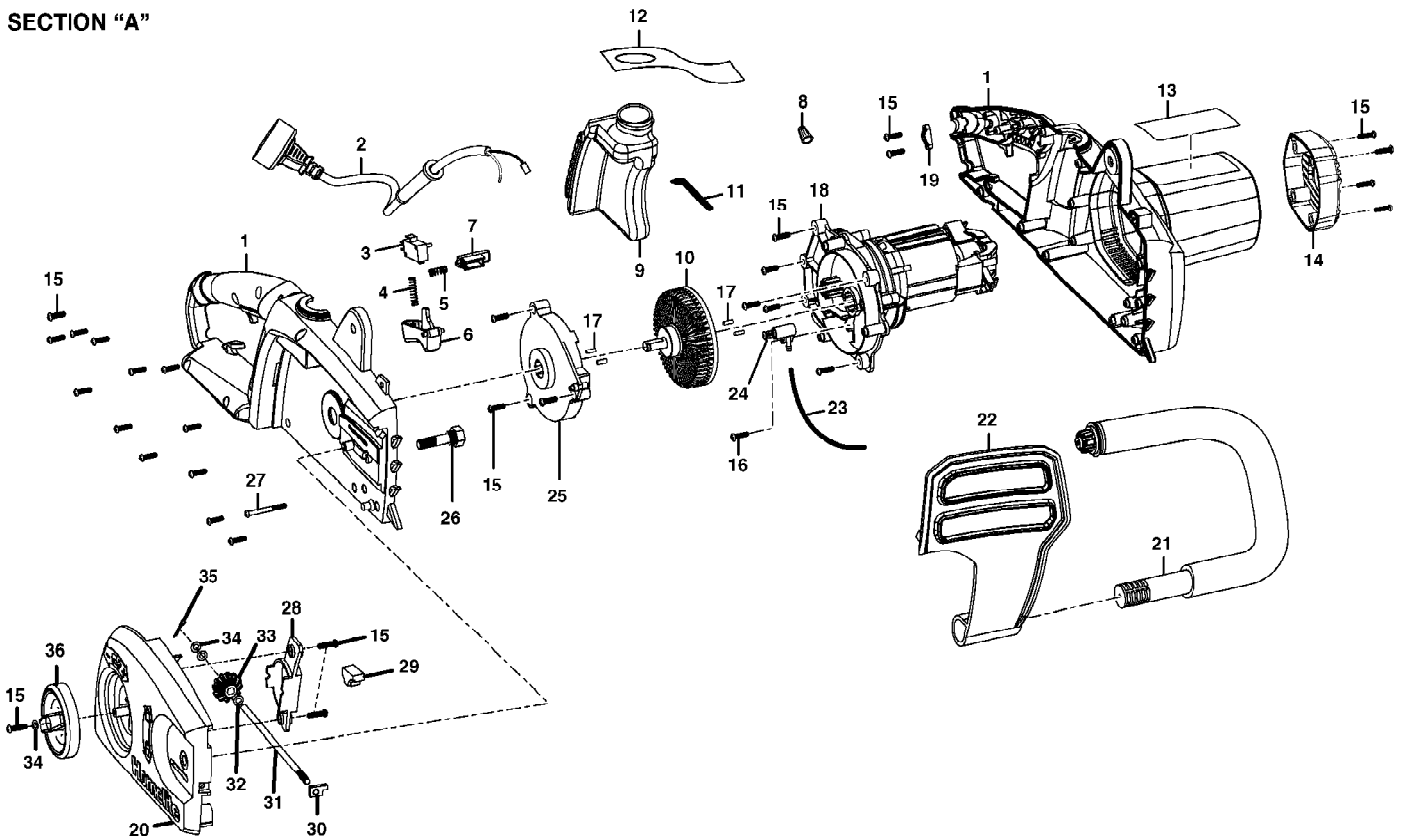
Electric Chain Saw UT-43100  
Homelite Chain Saw

Page 2 of 6

Ref #	Part Number	Qty	S/P/F	Description
1	34114154G	1		Chain Cover Lock Knob
2	31105154G	1		Chain Cover Assembly
3	310625001	1	S	Guide Bar (UT43100 - 14 in. With Safe-T-Tip)
4	901212001	1	S	Chain (UT43100 - .375 x 52 Link, 14 in.)
5	34109154G	1		Oil Reservoir Cap
6	33902102G	1		Sprocket
7	33302102G	1		Washer
8	32901154G	1		Retaining Ring
9	660640001	1		Screw w/Washer
10	308949001	1		Safe-T-Tip

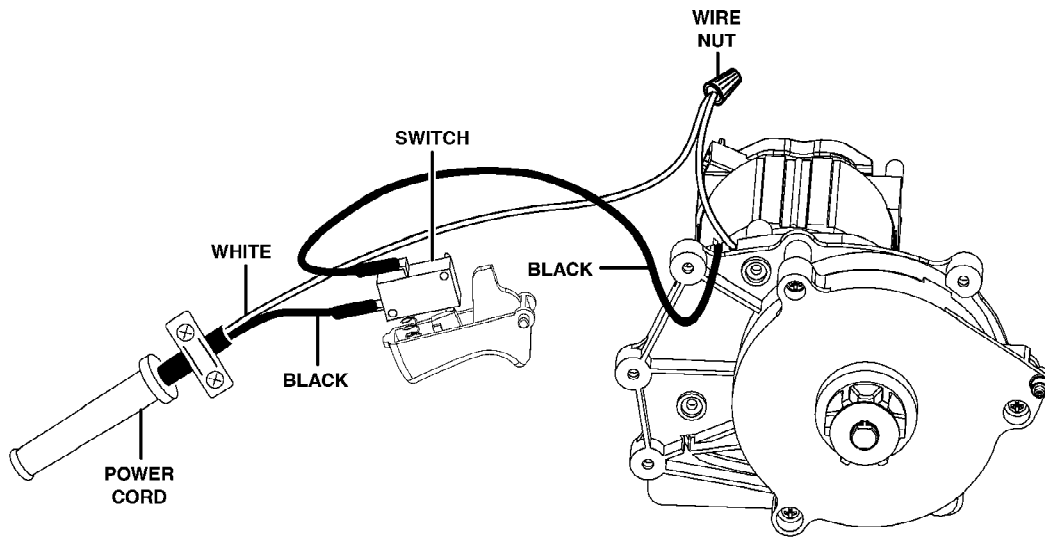
HOMELITE CHAIN SAW - MODEL NUMBERS UT43100 AND UT43120

SECTION "A"



Ref #	Part Number	Qty	S/P/F	Description
1	31301154G	1		Housing Assembly
2	36401154G	1		Power Cord
3	36301154G	1		Switch
4	33203154G	1		Trigger Spring
5	33204154G	1		Lock-off Spring
6	34106154G	1		Trigger
7	34107154G	1		Lock-off Button
8	36511154G	1		Wire Nut
9	931208261G	1		Oil Reservoir Assembly
10	34118154G	1		Ring Gear Assembly
11	34201154G	1		Oil Tube, Inlet
12	38202154G	1		Hang Tang
13	38101153G	1		Data Label (UT43100)
14	34101153G	1		Motor Cap (UT43100)
15	3220313G	30		Screw (M4 x 14 mm) Purchase locally
16	3220348G	1		Screw (M3.8 x 14 mm) Purchase locally
17	34210154G	4		Rubber Pin
18	36101153G	1		Motor Assembly (UT43100)
19	3410302G	1		Cord Clamp
20	34116154G	1		Chain Cover
21	34120154G	1		Front Handle
22	34110154G	1		Guard
23	34117102G	1		Oil Tube, Outlet
24	34901154G	1		Oil Pump
25	34105154G	1		Ring Gear Cover
26	33205154G	1		Chain Bar Stud
27	32201154G	1		Screw (M4.2 x 45 mm) Purchase locally
28	34119154G	1		Gear Cover
29	34208154G	1	/P	Rubber Pad
30	33311154G	1		Adjustment Pin
31	33210154G	1		Shaft
32	33320154G	1		Washer
33	34117154G	1		Adjustment Gear
34	3290408G	3		Washer
35	32901153G	1		Cotter Pin
36	34121154G	1		Adjustment Knob
	987000287	1		Operator's Manual

HOMELITE CHAIN SAW - MODEL NUMBERS UT43100 AND UT43120



WIRING DIAGRAM

Electric Chain Saw UT-43100  
Wiring Diagram

Page 6 of 6

Ref #	Part Number	Qty	S/P/F	Description
		1		No Parts List Available