

500E UT-26101
Frame Assy & Wheels

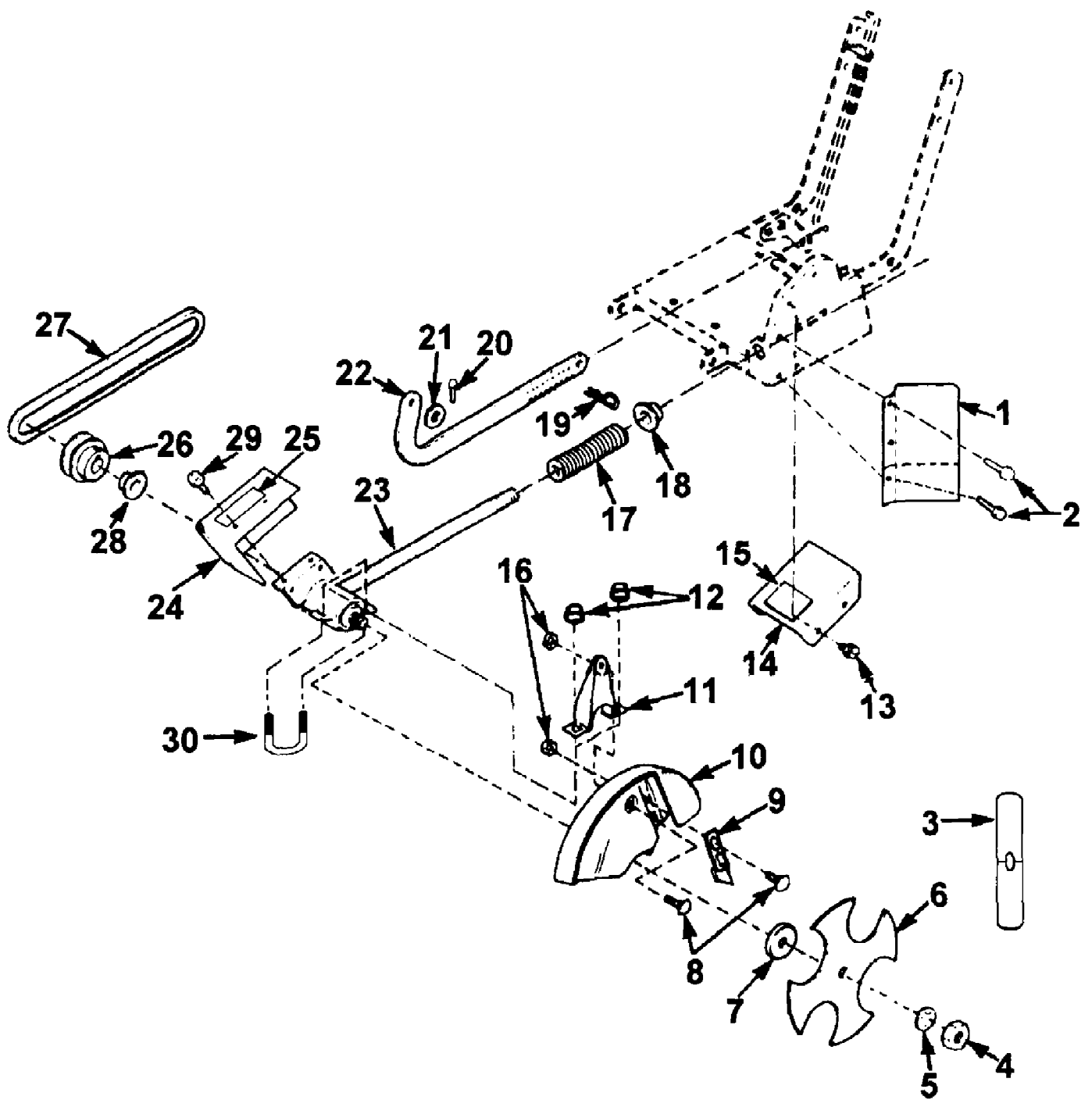
Page 2 of 5

| Ref # | Part Number | Qty | S/P/F | Description |
|-------|-------------|-----|-------|--|
| 1 | 012401 | 1 | | Handle |
| 2 | 0125920 | 1 | | Grip (Depth Control) |
| 3 | JA354532 | 1 | | Eyebolt |
| 4 | 81013 | 2 | | Nut (1/4-20) Torque Specs: 25-35 In/Lbs; 2.9-4 Nm |
| 5 | JA446130 | 1 | /P | Washer (lock 1/4") |
| 6 | 01243 | 1 | | Control (Depth) |
| 7 | A0788502 | 1 | | Cover (W/ Decal) |
| 8 | 88078 | 4 | /P | Screw (Sems 1/4-20 x 1") Torque Specs: 25-35 In/Lbs; 2.9-4 Nm |
| 9 | JA445768 | 9 | | Nut (1/4-20) Torque Specs: 25-35 In/Lbs; 2.9-4 Nm |
| 10 | 0125917 | 1 | | Rod (Lower Depth) |
| 11 | 0125925 | 1 | | Spring (Depth Control) |
| 12 | GM236907 | 6 | | Cotter Pin |
| 13 | 0125923 | 1 | | Spring (Angle Adjuster) |
| 14 | 0125926 | 1 | | Grip (Angle Adjuster) |
| 15 | 0125914 | 1 | | Lever (Angle Adjusting) |
| 16 | 0125912 | 1 | | Clamp (Angle Adjuster) |
| 17 | JA444762 | 2 | | Nut (Hex Locking) Torque Specs: 25-35 In/Lbs; 2.9-4 Nm |
| 18 | 0125913 | 1 | | Bushing (Adjuster) |
| 19 | 0125915 | 1 | | Lever (Clutch) |
| 20 | 82335 | 2 | S | Screw (Sems Hex Head) Torque Specs: 25-35 In/Lbs; 2.9-4 Nm |
| 21 | JA400264 | 1 | | Screw (3/8-16 x 1 1/4) Torque Specs: 35-45 In/Lbs; 4-5 Nm |
| 22 | 0125911 | 1 | | Bushing (Nylon 3/4) |
| 23 | 0125909 | 1 | | Comb (Angle Adjuster) |
| 24 | JA993958 | 2 | S | Wheel & Tire |
| 25 | 84091 | 5 | /P | Washer (Flat) |
| 26 | 0125901 | 1 | | Frame (Main) |
| 27 | 0125927 | 2 | | Retainer (Bushing) |
| 28 | 0125921 | 2 | | Bushing (Nylon) |
| 29 | 80087 | 4 | /P | Screw (Hex Cap) Torque Specs: 45-55 In/Lbs; 5.2-6.3 Nm |
| 30 | JA460312 | 2 | | Pin (Cotter) |
| 31 | 0125936 | 1 | | Pulley (Engine) |
| 32 | 01252 | 1 | | Wheel (Front) |
| 33 | 0125908 | 1 | | Spacer (Axle) |
| 34 | JA400422 | 1 | | Screw (1/2-13 x 4") Torque Specs: 45-55 In/Lbs; 5.2-6.3 Nm |
| 35 | JA444758 | 1 | | Nut (Hex Locking) Torque Specs: 45-55 In/Lbs; 5.2-6.3 Nm |
| 36 | 0125903 | 1 | | Bracket (F. Wheel) |
| 37 | 0125922 | 1 | | Spring (Axle) |
| 38 | 0125905 | 1 | | Axle (Rear) |

500E UT-26101
Frame Assy & Wheels

Page 3 of 5

| Ref # | Part Number | Qty | S/P/F | Description |
|-------|-------------|-----|-------|--|
| 39 | 80083 | 2 | /P | Screw (Hex Head) Torque Specs: 25-35 In/Lbs; 2.9-4 Nm |
| 40 | JA993720 | 8 | /P | Nut (Flange 5/16-18) Torque Specs: 35-45 In/Lbs; 4-5 Nm |
| 41 | 0125902 | 1 | | Bracket (Depth) |
| 42 | JA408880 | 3 | | Screw (Hex Head) Torque Specs: 10-15 In/Lbs; 1.2-1.7 Nm |
| 43 | 43301A | 1 | S | Key |
| 44 | 82390 | 1 | S | Screw (Set) Torque Specs: 35-45 In/Lbs; 4-5 Nm |
| 45 | | 1 | | Engine For engine replacement parts, locate the engine brand name, model number and type number and consult the appropriate dealer in your area. |
| 46 | JA359256 | 1 | | Deflector |



500E UT-26101
Gearhead & Guard Assy

Page 5 of 5

| Ref # | Part Number | Qty | S/P/F | Description |
|-------|-------------|-----|-------|--|
| 1 | A0125919 | 1 | | Flap (Debris Shield) |
| 2 | JA409907 | 4 | | Screw (1/4-20 x 1/2") Torque Specs: 25-35 In/Lbs; 2.9-4 Nm |
| 3 | 01246 | 1 | | Blade (2" x 9") (Optional) |
| 4 | JA443828 | 1 | /P | Nut (Jam 5/8 x 18) Torque Specs: 150-200 In/Lbs; 17.3-23 Nm |
| 5 | 83095 | 1 | | Washer (Lock 5/8") |
| 6 | 01245 | 1 | /P | Blade (Star) |
| 7 | 0125924 | 1 | | Washer (Dust Shield) |
| 8 | JA441664 | 3 | | Bolt (Carriage 1/4" x 5/8") Torque Specs: 25-35 In/Lbs; 2.9-4 Nm |
| 9 | 0125907 | 1 | | Finger (Guide) |
| 10 | 0125916 | 1 | /P | Guard (Blade) |
| 11 | 0125931 | 1 | | Bracket (Blade Support) |
| 12 | JA993720 | 2 | /P | Nut (Flanged 5/16-18) Torque Specs: 35-45 In/Lbs; 4-5 Nm |
| 13 | JA409907 | 2 | | Screw (1/4-20 x 1/2") Torque Specs: 25-35 In/Lbs; 2.9-4 Nm |
| 14 | A0125928 | 1 | | Guard (Engine Pulley) |
| 15 | 01255 | 1 | | Decal (Safety) |
| 16 | JA445768 | 4 | | Nut (1/4-20) Torque Specs: 25-35 In/Lbs; 2.9-4 Nm |
| 17 | 0125910 | 1 | | Spring (Cutter Head) |
| 18 | 0125911 | 1 | | Bushing (Nylon 3/4") |
| 19 | JA460312 | 1 | | Cotter Pin |
| 20 | GM236907 | 1 | | Cotter Pin |
| 21 | 84091 | 1 | /P | Washer (Flat) |
| 22 | 0125904 | 1 | | Ratchet (Depth Control) |
| 23 | 0125906 | 1 | | Gear Head |
| 24 | A0125937 | 1 | /P | Guard (Cutter Pulley) |
| 25 | 01249 | 1 | | Decal (Warning) |
| 26 | 0125942 | 1 | | Pulley (Cutter) |
| 27 | 01247 | 1 | | Belt (3/8 x 29") |
| | 0125951 | 1 | | Belt (5/8 x 29") |
| 28 | 0125943 | 1 | | Bushing |
| 29 | JA409907 | 2 | | Screw (1/4-20 x 1/2") Torque Specs: 25-35 In/Lbs; 2.9-4 Nm |
| 30 | 0125930 | 1 | | U-Bolt |