

For Serial Nos.
370,000 & Higher



PARTS MANUAL

TURF TRACER[®] HP

CONGRATULATIONS on the purchase of your new Exmark mower. This product has been carefully designed and manufactured to give you a maximum amount of dependability and years of trouble-free operation. If additional information is needed, or should you require trained mechanic service, contact your authorized Exmark equipment dealer or distributor. If you need to order replacement parts from your dealer, always give the model number and serial number of your mower as well as the part number, description and quantity of the part needed.

The Serial No. plate is located next to the fuel tank on the top left hand side of the fuel tank support. For ease of ordering and reference, we suggest that you record the information requested in the following identification table.

Place Model No. and Serial No. Label Here
(Included in Literature Pack)
or Fill in Below

Model No. _____

Serial No. _____

Engine Model No. and Spec. No. (Code) _____

Engine Serial No. (E/No) _____

Date Purchased _____

Part No. 103-2926 Rev A.

EXMARK PARTS PLUS® PROGRAM

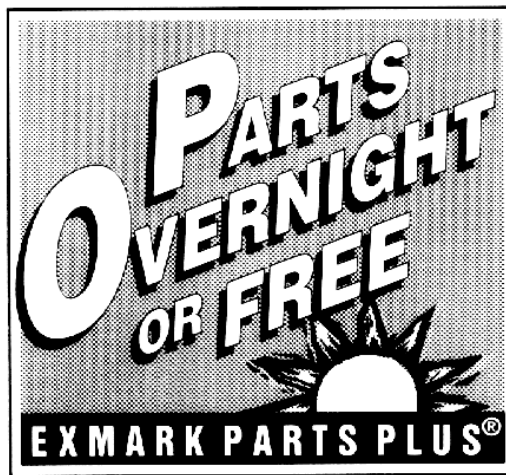
EFFECTIVE DATE: September 1, 1995

Program

If your Exmark dealer does not have the Exmark part in stock, Exmark will get the parts to the dealer the next business day or the part will be FREE* Guaranteed!!

How the Program Works

1. If dealer does not have part in stock for a "down" unit at the time of request by customer, the dealer contacts his distributor by 1:00 p.m., local time, and requests Exmark Parts Plus® shipment of six (6) line items or less.
2. Distributor ships part(s) to dealer or customer, as requested by dealer, same day, overnight UPS Distributor bills dealer for part and freight charges where applicable.
3. If distributor does not have the part(s) in stock to satisfy Exmark Parts Plus® order, he contacts Exmark by 3:00 p.m., central time, with an Exmark Parts Plus® order of six (6) line items or less.
4. If order is received by 3:00 p.m. central time, Exmark ships part(s) direct to dealer or customer, as requested by distributor, same day, overnight UPS Exmark bills the distributor for parts and shipping charges, where applicable.
5. The customer pays for the part and freight if it is shipped under the Exmark Parts Plus® and if it arrive in accordance to the program.
6. Who pays for the part and freight if it fails to arrive overnight in accordance to the program?
 - A. Under any circumstance the customer does not pay.
 - B. If the part does not arrive overnight due to:
 1. The dealer not submitting the Exmark Parts Plus® order to his Exmark distributor by 1:00 p.m., the dealer pays for the part and freight.
 2. The Distributor being unable to ship the part the same day or not submitting the Exmark Parts Plus® order to Exmark by 3:00 p.m., central time, the Distributor pays for the part and freight.
 3. Exmark being unable to ship the part and the Exmark parts order is received by 3:00 p.m., central time, Exmark pays for the part and freight.
 4. If the part does not arrive overnight due to the shipper (UPS), the shipper pays for the freight and Exmark pays for the part.



The following restrictions apply -- The Exmark Parts Plus® Program is available only through participating Exmark Dealers and applies only to orders submitted on this program Monday through Thursday. Parts Plus service is available only in the contiguous United States. UPS has initiated a Saturday delivery program to many areas of the continental United States and can be requested for an overnight shipment on Friday to be delivered Saturday. The next day air charge, plus the Saturday delivery fee will be the responsibility of the purchaser. Exmark Mfg. will assume no responsibility for Saturday delivery shipments. To qualify, all Exmark Parts Plus® orders must be received by Exmark by 3:00 p.m., central time. Orders must be six (6) line items or less. Exclusions from the Exmark Parts Plus® Program are: Any wholegood or accessory in its entirety, engines and engine replacement parts, 5-speed Peerless transmissions and 5-speed transaxles, hydraulic or hydrostatic wheel motors, cutter decks and engine decks or any item exceeding United Parcel Service size and weight restrictions.

Due to UPS restrictions, aerosol spray paint is considered a hazardous material and cannot be shipped via UPS next day or Second Day Air.

Exmark Manufacturing stocks a limited supply of parts for transaxles, pumps and wheel motors. These parts can be ordered for Next Day Air shipment but will not be guaranteed per the Parts Plus Program.



**READ OPERATOR'S MANUAL BEFORE
OPERATING OR SERVICING EXMARK EQUIPMENT.**

TABLE OF CONTENTS

<u>Description</u>	<u>Page</u>
Decals	16-17
Electrical Group	14
Engine Deck Group.....	8-11
52" Mower Deck	6-7
48" Mower Deck	4-5
Hydraulics Group	18
36" Mower Deck	2-3
Upper Handles & Controls, ECS	12-13
Wiring Diagrams	15

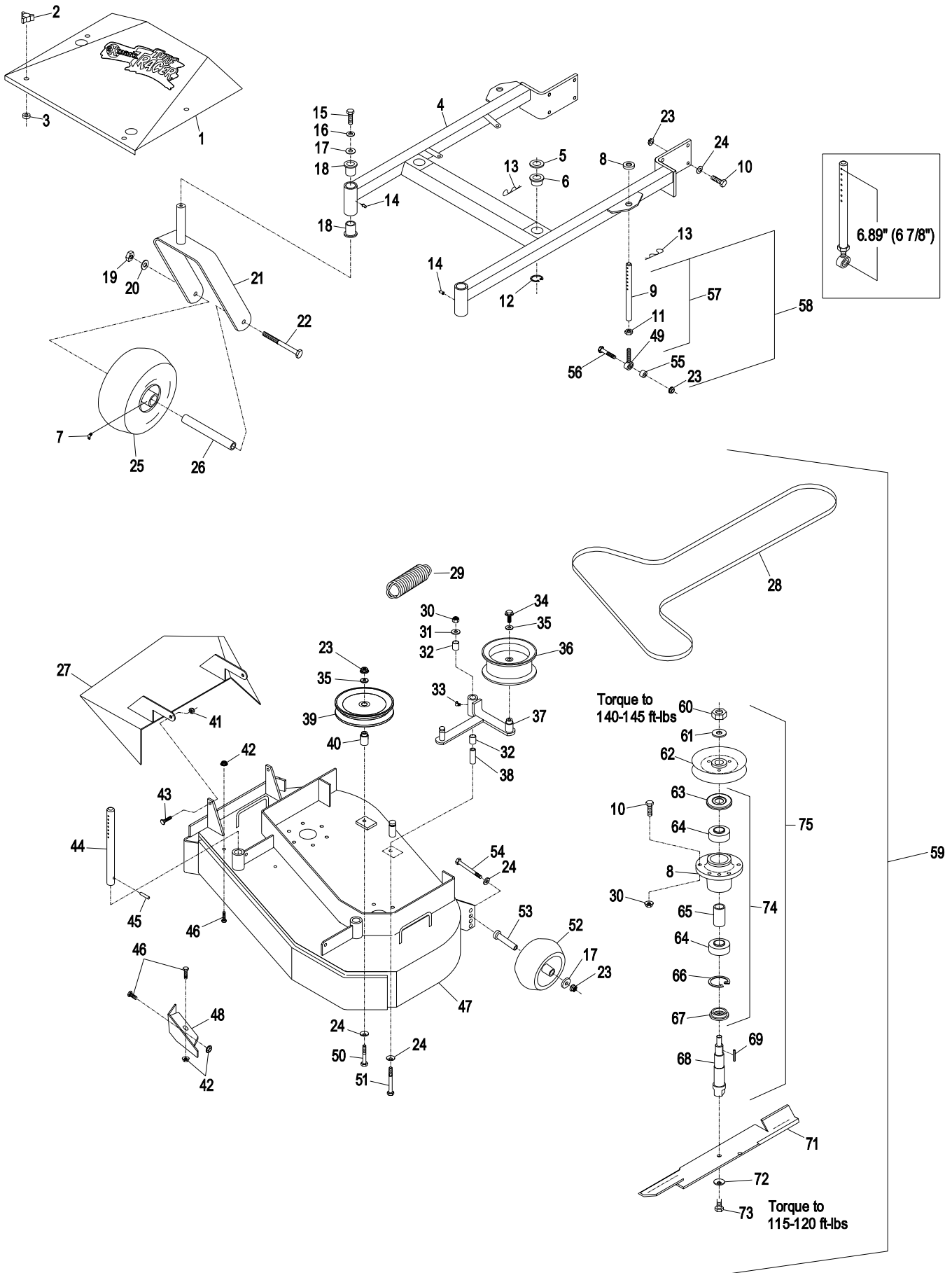
36" MOWER DECK

Ref. No.	Part No.	Description	Qty. Req'd.	Ref. No.	Part No.	Description	Qty. Req'd.
1	1-414386	Shield, belt w/decals.....	1	39	1-613098	Pulley, Idler	1
	1-413098-01	Shield, belt.....	1	40	1-413113	Bushing, Idler.....	1
2	1-323385	Knob, belt shield	4	41	3296-29	Nut, Nyloc 5/16-18.....	2
3	1-323417	Washer, belt shield	4	42	32128-20	Nut, Whizlock 5/16-18	3
4	1-414309	Support wld w/bushings&decals... 1		43	322-5	Screw, Hex Cap 5/16-18 x 1.....	2
	1-412108-01	Support weldment.....	1	44	1-603001	Rod, Deck Support	2
5	1-413425	Spacer, Front Deck Support	2	45	1-806332	Rollpin, 1/4x1 1/2.....	2
6	1-513336	Bushing, deck support	2	46	322-2	Screw, Hex Cap 5/16-18 x 5/8.....	3
7	302-61	Zerk, 45 degree 1/4-28.....	2	47	1-414383	Deck weldmt w/decals, discharge Baffle & support rods	1
8	1-323539	Spacer.....	2		1-412104-01	Deck weldmt	1
9	1-413525	Link, Deck Support.....	2	48	1-522480-01	Baffle, discharge.....	1
10	323-7	Screw, Hex Cap 3/8-16 x 1 1/4 ...	8	49	1-613204	Ball Joint	2
11	3219-3	Nut, Reg Hex 3/8-24.....	2	50	323-13	Screw, Hex Cap 3/8-16 x 2 3/4....	1
12	32120-33	Ring, Retaining	2	51	1-800805	Screw, Hex Cap 3/8-16 x 3 1/2 G8	1
13	1-806009	Hairpin, Cotter .177 #206	4	52⊛	1-603299	Roller, antiscalp	1
14	302-52	Zerk, Straight 1/8.....	2	53	1-603602	Bushing, roller.....	1
15	323-6	Screw, Hex Cap 3/8-16x1	2	54	98-5961	Screw, Hex Cap 3/8-16x4 Gr. 8... 1	
16	3253-5	Washer, 3/8 heavy spring.....	2	55	1-603050	Bushing Spacer	2
17	1-373034	Washer, Swivel	3	56	323-9	Screw, hex Cap 3/8-16x1 3/4	2
18	1-303514	Bearing, Flange	4	57▲	1-414521	Link, Assembly.....	2
19	3217-9	Nut, Reg Hex 1/2-13.....	2	58	1-611216	Kit, Link Assembly	2
20	3253-7	Washer, Lock Hlcl Spg 1/2 Reg... 2		59	103-0320	Assy, cutting deck complete	1
21	1-522143-01	Caster weldment	2	60	3217-46	Nut, HH 3/4-16 heavy	2
22	325-20	Screw, Hex Cap 1/2-13x6	2	61	103-2802	Washer, disc spring 3/4	2
23	3290-357	Nut, Whizlock 3/8-16	12	62+	1-413424	Sheave w/ hub	2
24	98-5975	Washer, Disc Spring 3/8.....	11	63+	103-1330	Guard, bearing top.....	2
25	103-1224	Tire & Wheel Asm(semi-pneumatic) . 2		64+	103-2477	Bearing, ball.....	4
	1-513809	Roller Bearing	2	65	103-2534	Spacer, bearing	2
❖	103-2170	Bushing (semi-pneumatic).....	4	66	32120-8	Ring, snap.....	2
26■	103-2169	Spacer (semi-pneumatic)	2	67	103-2535	Spacer, guard bottom	2
27	103-2431-01	Chute weldment, discharge	1	68+	103-2788	Shaft, spindle	2
28	1-413094	Belt, deck drive	1	69	1-807268	Key, machine	2
29	1-633151	Spring, extension.....	1	70	1-323532	Housing, spindle	2
30	3296-39	Nut, Nyloc 3/8-16	1	71	103-2528	Blade, 18.00 notched.....	2
31	3256-4	Washer, Flat Std 3/8.....	1	◆	103-2518	Blade, 18.00 mulching	2
32	1-513034	Pivot Bearing	2		103-2508	Blade, 18.00 low lift.....	2
33	302-40	Zerk, 90 degree 1/4-28.....	1		103-1578	Blade, 18.00 solid	2
34	3234-11	Bolt, Hex Whizlock 3/8-16x1	1	72	1-513208	Washer, disc spring 5/8	2
35	3256-24	Washer, Flat 3/8 SAE	2	73	103-1026	Screw, HH 5/8-11 x 1 G8.....	2
36	1-413099	Pulley, Idler	1	74	103-2547	Cutter Housing Assembly	2
37	1-412134-03	Arm, weldmt	1	75*	103-3207	Cutter Housing Complete	2
	1-414144	Arm, weldmt w/bushings	1	76□	103-2171	Kit,semi-pneumatic wheel replacement.... 1	
38	1-603384	Bushing, Idler Pivot	1				

Exmark red touch up spray paint - P/N 1-850337

- ◆ Requires installation of Micro-Mulch accessory for proper mulching. Mulch kit P/N MK363(36")
- ▲ Link assembly nominal length is 6.89" (or approximately 6 7/8") between center of ball joint and center of furthest hole. See diagram on next page. Initially adjust both links to this dimension, then adjust to where both links are equally supporting rear of mower deck by lengthening one link and shortening the other by an equal amount.
- ❖ Bushing for semi-pneumatic caster tires can be identified by a groove on the face.
- Front caster spacer for semi-pneumatic caster tires can be identified by yellow zinc plating.
- Kit 103-2171 used to install semi-pneumatic casters on machines originally fitted with pneumatic casters. Includes 103-1224 & 103-2169. Order 2 per machine.
- ⊛ Kit 103-3168 includes antiscalp roller, bushing, and mounting hardware.
- ⊕ Apply Mobil HTS grease (or a food-grade antisieze) between the spindles & bearings and spindles & sheaves and under top bearing guard. DO NOT use a copper or nickel based antisieze.
- * Complete cutting housings also include items 72 & 73

36" MOWER DECK



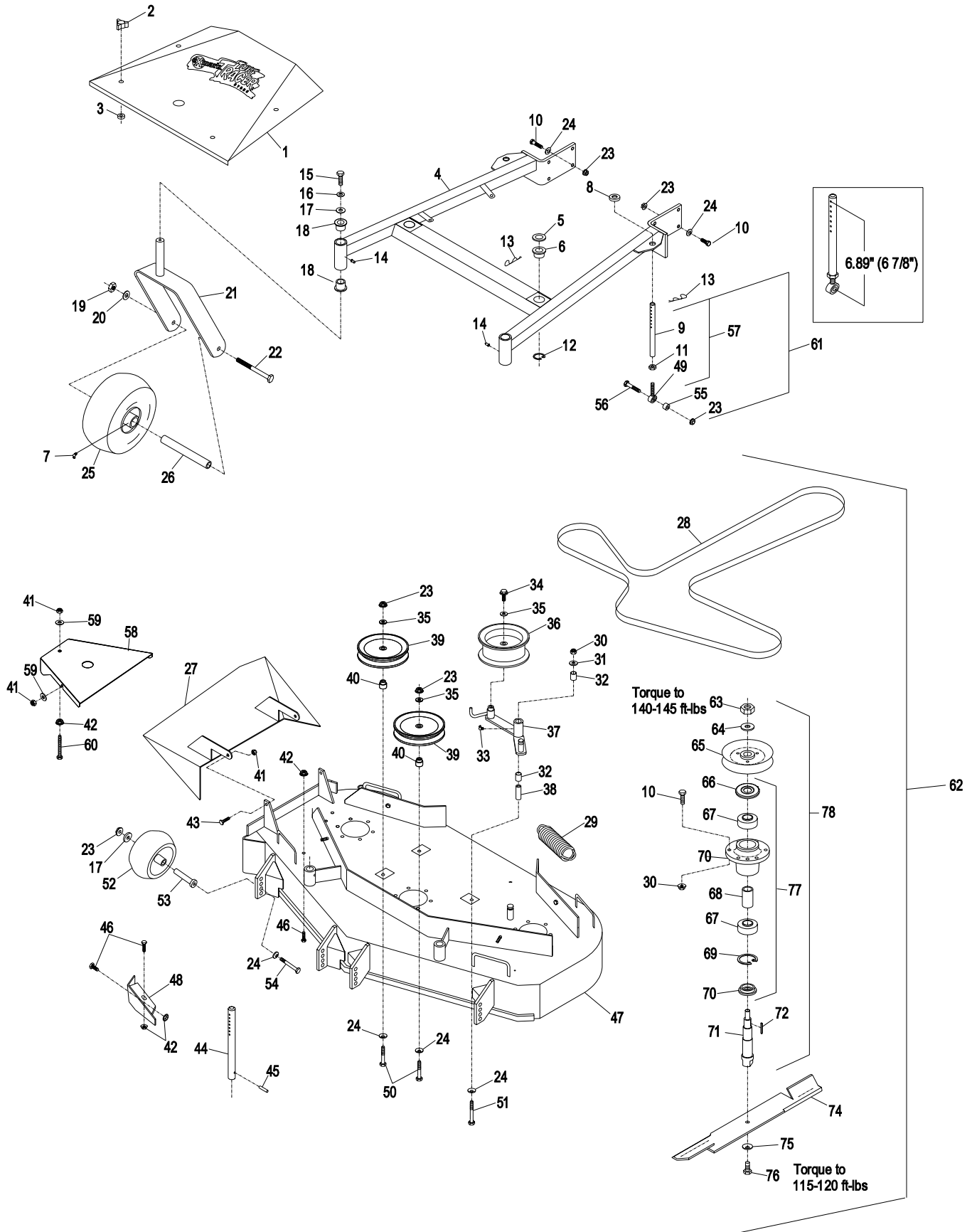
48" MOWER DECK

Ref. No.	Part No.	Description	Qty. Req'd.	Ref. No.	Part No.	Description	Qty. Req'd.
1	1-414387	Shield, belt w/decals.....	1	41	3296-29	Nut, Nyloc 5/16-18.....	8
	1-413101-01	Shield, belt.....	1	42	32128-20	Nut, Whizlock 5/16-18.....	5
2	1-323385	Knob, belt shield.....	4	43	322-5	Screw, Hex Cap 5/16-18 x 1.....	2
3	1-323417	Washer, belt cover.....	4	44	1-603001	Rod, Deck Support.....	2
4	1-414310	Support wld w/bushings & decals	1	45	1-806332	Rollpin, 1/4x1 1/2.....	2
	1-412110-01	Support weldmt.....	1	46	322-2	Screw, Hex Cap 5/16-18 x 5/8.....	3
5	1-413425	Spacer, Front Deck Support.....	2	47	1-414384	Deck weldmt w/decals, discharge Baffle & support rods.....	1
6	1-513336	Bushing, deck support.....	2		1-412106-01	Deck weldmt.....	1
7	302-61	Zerk, 45 degree ¼-28.....	2	48	1-522480-01	Baffle, discharge.....	1
8	1-323539	Spacer.....	2	49	1-613204	Ball Joint.....	2
9	1-413525	Link, Deck Support.....	2	50	323-13	Screw, Hex Cap 3/8-16 x 2 3/4....	2
10	323-7	Screw, Hex Cap 3/8-16 x 1 ¼.....	26	51	1-800805	Screw, Hex Cap 3/8-16 x 3 ½ G8	1
11	3219-3	Nut, Reg Hex 3/8-24.....	2	52⊛	1-603299	Roller, antiscalp.....	4
12	32120-33	Ring, Retaining.....	2	53	1-603602	Bushing, roller.....	4
13	1-806009	Hairpin, Cotter .177 #206.....	4	54	98-5961	Screw, Hex Cap 3/8-16x4 Gr. 8...	4
14	302-52	Zerk, Straight 1/8.....	2	55	1-603050	Bushing Spacer.....	2
15	323-6	Screw, Hex Cap 3/8-16x1.....	2	56	323-9	Screw, hex Cap 3/8-16x1 3/4.....	2
16	3253-5	Washer, 3/8 heavy spring.....	2	57▲	1-414521	Link, Assembly.....	2
17	1-373034	Washer, Swivel.....	6	58	103-2970-01	Shield, Belt.....	2
18	1-303514	Bearing, Flange.....	4	59	3256-3	Washer, Flat Std 5/16.....	6
19	3217-9	Nut, Reg Hex ½-13.....	2	60	1-800017	Bolt, Hex Tap 5/16-18 3 1/4.....	2
20	3253-7	Washer, Lock Hlcl Spg ½ Reg....	2	61	1-611216	Kit, Link Assembly.....	2
21	1-522143-01	Caster weldment.....	2	62	103-0321	Assy, cutting deck complete.....	1
22	325-20	Screw, Hex Cap ½-13x6.....	2	63	3217-46	Nut, HH ¾ heavy.....	3
23	3290-357	Nut, Whizlock 3/8-16.....	16	64	103-2802	Washer, disc spring 3/4.....	3
24	98-5975	Washer, Disc Spring 3/8.....	15	65+	1-413424	Sheave w/ hub.....	3
25	103-1224	Tire & Wheel Asm (semi pneumatic).	2	66+	103-1330	Guard, bearing top.....	3
	1-513809	Roller Bearing.....	2	67+	103-2477	Bearing, ball.....	6
❖	103-2170	Bushing (semi-pneumatic).....	4	68	103-2534	Spacer, bearing.....	3
26■	103-2169	Spacer (semi-pneumatic).....	2	69	32120-8	Ring, snap.....	3
27	103-2431-01	Chute weldment, discharge.....	1	70	103-2535	Spacer, guard bottom.....	3
28	1-413093	Belt, deck drive.....	1	71+	103-2788	Shaft, spindle.....	3
29	1-633151	Spring, extension.....	1	72	1-807268	Key, machine.....	3
30	3296-39	Nut, Nyloc 3/8-16.....	30	73	1-323532	Housing, spindle.....	3
31	3256-4	Washer, Flat Std 3/8.....	1	74	103-2572	Blade, 16.25 notched.....	3
32	1-513034	Pivot Bearing.....	2	◆	103-2517	Blade, 16.25 mulching.....	3
33	302-40	Zerk, 90 degree ¼-28.....	1		103-2507	Blade, 16.25 low lift.....	3
34	3234-11	Bolt, Hex Whizlock 3/8-16x1.....	1		103-1577	Blade, 16.25 solid.....	3
35	3256-24	Washer, Flat 3/8 SAE.....	3	75	1-513208	Washer, disc spring 5/8.....	3
36	1-413099	Pulley, Idler.....	1	76	103-1026	Screw, HH 5/8-11 x 1 G8.....	3
37	1-412394-03	Arm, weldmt.....	1	77	103-2547	Cutter Housing Assembly.....	3
	1-414398	Arm, weldmt w/bushings.....	1	78*	103-3207	Cutter Housing Complete.....	3
38	1-603384	Bushing, Idler Pivot.....	1	79□	103-2171	Kit,semi-pneumatic wheel replacement....	1
39	1-613098	Pulley, Idler.....	2				
40	1-413113	Bushing, Idler.....	2				

Exmark red touch up spray paint - P/N 1-850337

- ◆ Requires installation of Micro-Mulch accessory for proper mulching. Mulch kit P/N MK483(48")
- ▲ Link assembly nominal length is 6.89" (or approximately 6 7/8") between center of ball joint and center of furthest hole. See diagram on next page. Initially adjust both links to this dimension, then adjust to where both links are equally supporting rear of mower deck by lengthening one link and shortening the other by an equal amount.
- ❖ Bushing for semi-pneumatic caster tires can be identified by a groove on the face.
- Front caster spacer for semi-pneumatic caster tires can be identified by yellow zinc plating.
- Kit 103-2171 used to install semi-pneumatic casters on machines originally fitted with pneumatic casters. Includes 103-1224 & 103-2169. Order 2 per machine.
- ⊛ Kit 103-3168 includes antiscalp roller, bushing, and mounting hardware.
- + Apply Mobil HTS grease (or a food-grade antisieze) between the spindles & bearings and spindles & sheaves and under top bearing guard. DO NOT use a copper or nickel based antisieze.
- * Complete cutting housings also include items 75 & 76.

48" MOWER DECK



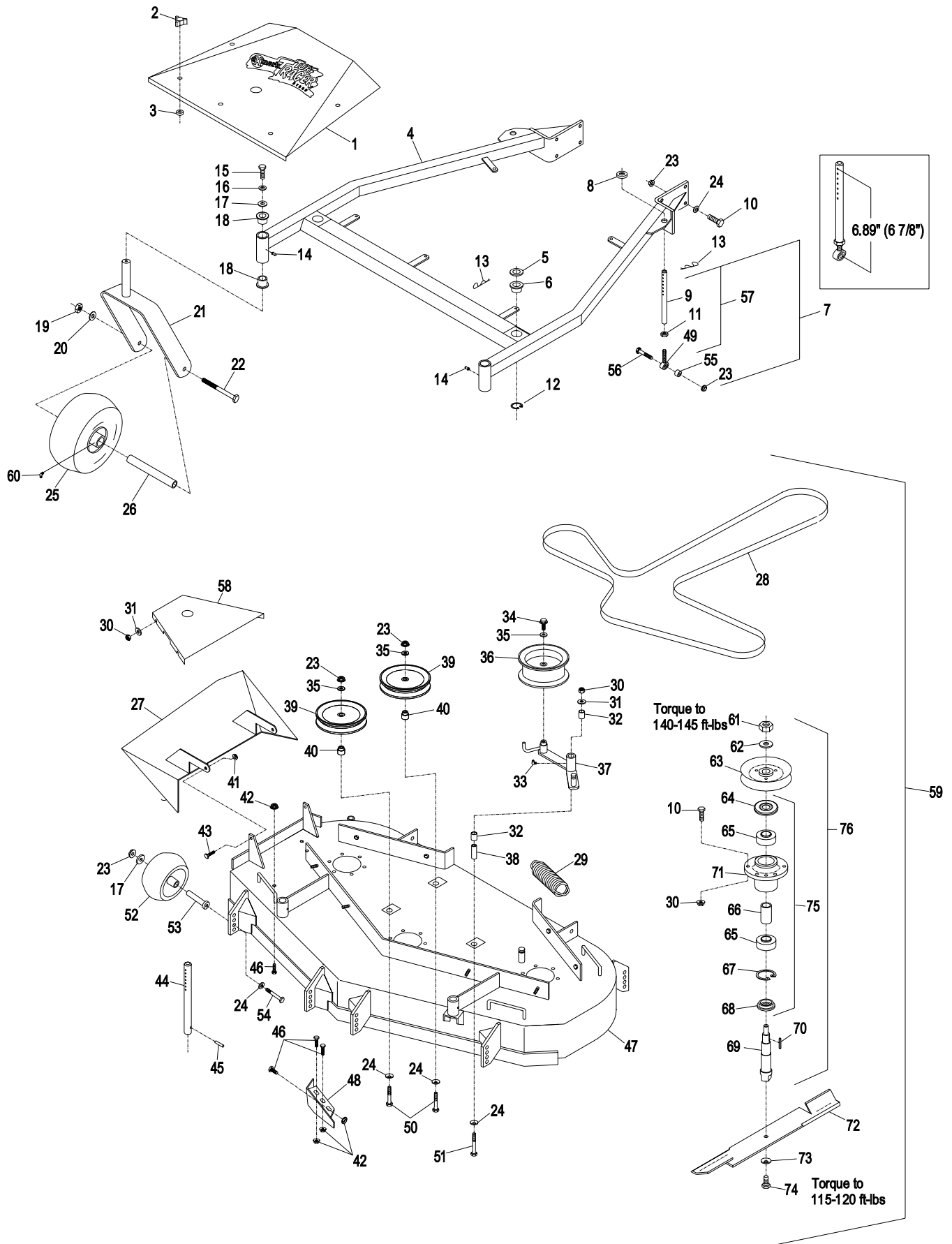
52" MOWER DECK

Ref. No.	Part No.	Description	Qty. Req'd.	Ref. No.	Part No.	Description	Qty. Req'd.
1	1-414388	Shield, belt w/decals	1	40	1-413113	Bushing, Idler	2
	1-413303-01	Shield, belt	1	41	3296-29	Nut, Nyloc 5/16-18	2
2	1-323385	Knob, belt shield	5	42	32128-20	Nut, Whizlock 5/16-18	6
3	1-323417	Washer, belt cover	5	43	322-5	Screw, Hex Cap 5/16-18 x 1	2
4	1-414311	Support wld w/bushings & decals. 1		44	1-603001	Rod, Deck Support.....	2
	1-412317-01	Support weldmt.....	1	45	1-806332	Rollpin, 1/4x1 1/2	2
5	1-413425	Spacer, Front Deck Support	2	46	322-2	Screw, Hex Cap 5/16-18 x 5/8	6
6	1-513336	Bushing, deck support	2	47	1-414385	Deck weldmt w/decals, discharge Baffle & support rods	1
7	1-611216	Kit, Link Assembly.....	2		1-412313-01	Deck weldmt.....	1
8	1-323539	Spacer.....	2	48	1-602913-01	Baffle, discharge	1
9	1-413525	Link, Deck Support.....	2	49	1-613204	Ball Joint.....	2
10	323-7	Screw, Hex Cap 3/8-16 x 1 1/4 ...	8	50	323-13	Screw, Hex Cap 3/8-16 x 2 3/4 ...	2
11	3219-3	Nut, Reg Hex 3/8-24	2	51	1-800805	Screw, Hex Cap 3/8-16 x 3 1/2 G8	1
12	32120-33	Ring, Retaining	2	52⊕	1-603299	Roller, antiscalp.....	6
13	1-806009	Hairpin, Cotter .177 #206.....	4	53	1-603602	Bushing, roller	6
14	302-52	Zerk, Straight 1/8	2	54	98-5961	Screw, Hex Cap 3/8-16x4 Gr. 8..	6
15	323-6	Screw, Hex Cap 3/8-16x1	2	55	1-603050	Bushing Spacer.....	2
16	3253-5	Washer, 3/8 heavy spring	2	56	323-9	Screw, hex Cap 3/8-16x1 3/4.....	2
17	1-373034	Washer, Swivel.....	8	57▲	1-414521	Link, Assembly	2
18	1-303514	Bearing, Flange.....	4	58	103-2971-01	Shield, Belt.....	2
19	3217-9	Nut, Reg Hex 1/2-13	2	59	103-0322	Assembly, cutting deck complete	1
20	3253-7	Washer, Lock Hlcl Spg 1/2 Reg	2	60	302-61	Zerk, 45 degree 1/4-28.....	2
21	1-522143-01	Caster weldment.....	2	61	3217-46	Nut, HH 3/4-16 heavy.....	3
22	325-20	Screw, Hex Cap 1/2-13x6	2	62	103-2802	Washer, disc spring 3/4	3
23	3290-357	Nut, Whizlock 3/8-16.....	18	63+	1-413424	Sheave w/ hub	3
24	98-5975	Washer, Disc Spring 3/8	17	64+	103-1330	Guard, bearing top	3
25	103-1224	Tire & Wheel Asm (semi-pneumatic)..	2	65+	103-2477	Bearing, ball	6
	1-513809	Roller Bearing	2	66	103-2534	Spacer, bearing.....	3
❖	103-2170	Bushing (semi-pneumatic)	4	67	32120-8	Ring, snap	3
26■	103-2169	Spacer (semi-pneumatic).....	2	68	103-2535	Spacer, guard bottom	3
27	1-602571-01	Chute weldment, discharge	1	69+	103-2788	Shaft, spindle	3
28	1-413308	Belt, deck drive.....	1	70	1-807268	Key, machine	3
29	1-633151	Spring, extension	1	71	1-323532	Housing, spindle.....	3
30	3296-39	Nut, Nyloc 3/8-16	9	72	103-2528	Blade, 18.00 notched	3
31	3256-4	Washer, Flat Std 3/8	9	◆	103-2518	Blade, 18.00 mulching	3
32	1-513034	Pivot Bearing.....	2		103-2508	Blade, 18.00 low lift.....	3
33	302-40	Zerk, 90 degree 1/4-28	1		103-1578	Blade, 18.00 solid.....	3
34	3234-11	Bolt, Hex Whizlock 3/8-16x1	1	73	1-513208	Washer, disc spring 5/8	3
35	3256-24	Washer, Flat 3/8 SAE	3	74	103-1026	Screw, HH 5/8-11 x 1 G8.....	3
36	1-413099	Pulley, Idler	1	75	103-2547	Cutter Housing Assembly	3
37	1-412394-03	Arm, weldment.....	1	76*	103-3207	Cutter Housing Complete.....	3
	1-414398	Arm, weldment w/bushings.....	1	77□	103-2171	Kit,semi-pneumatic wheel replacement...	1
38	1-603384	Bushing, Idler Pivot.....	1				
39	1-613098	Pulley, Idler	2				

Exmark red touch up spray paint - P/N 1-850337

- ◆ Requires installation of Micro-Mulch accessory for proper mulching. Mulch kit P/N MK523(52")
- ▲ Link assembly nominal length is 6.89" (or approximately 6 7/8") between center of ball joint and center of furthest hole. See diagram on next page. Initially adjust both links to this dimension, then adjust to where both links are equally supporting rear of mower deck by lengthening one link and shortening the other by an equal amount.
- ❖ Bushing for semi-pneumatic caster tires can be identified by a groove on the face.
- Front caster spacer for semi-pneumatic caster tires can be identified by yellow zinc plating.
- Kit 103-2171 used to install semi-pneumatic casters on machines originally fitted with pneumatic casters. Includes 103-1224 & 103-2169. Order 2 per machine.
- ⊕ Kit 103-3168 includes antiscalp roller, bushing, and mounting hardware.
- + Apply Mobil HTS grease (or a food-grade antisieze) between the spindles & bearings and spindles & sheaves and under top bearing guard. DO NOT use a copper or nickel based antisieze.
- * Complete cutting housings also include items 73 & 74.

52" MOWER DECK



ENGINE DECK GROUP

Ref. No.	Part No.	Description	Qty. Req'd.	Ref. No.	Part No.	Description	Qty. Req'd.
1 ★	323-11	Screw, 3/8-16 x 2-1/4.....	2	41	1-373034	Washer,pivot.....	2
↑	323-11	Screw, 3/8-16 x 2-1/4	1	42	1-603610	Washer.....	2
2 ★	98-5975	Washer, 3/8 disc spring	11	43▽	3212-10	Screw,7/16-20x2-1/2.	1
↑	98-5975	Washer, 3/8 disc spring	13	44	3256-24	Washer, 3/8 SAE flat.....	2
3	1-603044	Bushing.....	2	45	1-603843	Pulley, idler	1
4	1-513034	Bearing, pivot.....	4	46	1-603496	Bushing - Idler	1
5	302-19	Zerk, straight	1	47	1-603402	Spring, extension.....	1
6	1-412285-03	Bellcrank weldment.....	1	48	1-412136-03	Idler arm weldmt.....	1
	1-414143	Bellcrank weldment w/brgs	1		1-414141	Idler arm weldmt w/brgs.....	1
7	322-6	Screw, 5/16-18 x 1-1/4.....	1	49	1481.	Zerk, 45 degree	2
8	321-6	Screw, 1/4-20 x 1.....	2	50	323-13	Screw, 3/8-16 x 2-3/4	1
9	32128-33	Nut, 1/4-20 whizlock.....	4	51	323-9	Screw, 3/8-16 x 1-3/4	2
10	1-523498	Spring, motion control.....	1	52★	1-809069	Screw, #10-24 x 7/8	1
11	1-513113	Spring, belt tension	1	53★	1-323365	Chain, cold start.....	1
12	1-543007	Spacer	1	54★	3256-14	Washer, 7/32 std flat	1
13	1-213069	Washer	2	55★	3296-2	Nut, #10-24 nyloc	1
14	3296-29	Nut, 5/16-18 nyloc	3	56	1-807272	Key, 5mm sq x 25mm	2
15	3256-4	Washer, 3/8 std flat.....	2	57▽	1-803050	Setscrew,sq hd cuppoint.....	4
16	3290-357	Nut, 3/8-16 whizlock.....	19	58	1-413095	Belt, pump drive.....	1
17	1-413282	Linkage	1	59◇	1-413010	Sheave, pump drive.....	2
18	1-806003	Hairpin cotter	1	60	1-413096	Belt, blade clutch	1
19	103-2886-01	Deck weldmt, engine	1	61	1-807259	Key, 1/4 sq x 1	1
20	323-4	Screw, 3/8-16 x 3/4.....	2	62◇	1-412011	Sheave w/shaft	1
21	1-633068	Arm	1	63◇	1-413111	Bearing, clutch.....	2
22	32128-20	Nut, 5/16-18 whizlock.....	15	64	32120-8	Ring, retaining	2
23	1-303334	Washer, 5/16 disc spring	5	65	1-413012	Spacer, bearing	1
24 ★	1-322110	Guide weldmt, belt	1	66	1-523157	Washer, spacer	1
25 ★	322-7	Screw, 5/16-18x1-1/2.....	3	67	1-413049-01	Plate, clutch pivot	1
↑	322-7	Screw, 5/16-18x1-1/2.....	4	68	322-5	Screw, 5/16-18 x 1.....	6
26 ★	322-9	Screw, 5/16-18x1-3/4.....	1	69	1-413207	Pivot, bearing.....	2
27	3256-3	Washer, 5/16 std flat	2	70	1-412417-03	Arm weldmt, clutch	1
28 ★	1-323366	Ring, split.....	1		1-414418	Arm weldmt, clutch w/brgs	1
29	3296-39	Nut, 3/8-16 nyloc	5	71	1-413235	Washer, spacer	1
30★	323-6	Screw, 3/8-16 x 1.....	8	72	1-412138-03	Pin weldmt, pivot	1
↑	323-6	Screw, 3/8-16 x 1.....	10	73	322-3	Screw, 5/16-18 x 3/4.....	3
31	1-412080-01	Mount, wheel motor 36"	2	74	1-413062	Band, brake	1
	1-412082-01	Mount, wheel motor 48" & 52"	2	75	323-8	Screw, 3/8-16 x 1 1/2.....	2
32	3234-12	Screw,3/8-16 x 3/4 whizlock	8	76	1-412325	Guide weldmt, belt.....	1
33	1-602997	Hub, four bolt w/studs	2	77◇	1-412031	Sheave w/drum (36" & 52").....	1
	1-633926	Stud.....	8		1-412028	Sheave w/drum (48")	1
34	1-413473	Wheel & tire assy (36")	2	78▽	1-800521	Screw, 3/8-24 x 1.....	1
	1-413474	Tire 16 x 6.50-8 (36")	2	79	1-413009-01	Plate, guard	1
	1-613263	Wheel & tire assy (48" & 52").....	2	80	103-2056	Shield, trailing	1
	1-613264	Tire 16 x 7.50-8 (48" & 52").....	2	81	1-413510	Clip, loom - .50	2
	1-603715	Wheel.....	2	82	1-413511	Hanger, drag shield	2
35	242-50	Nut, wheel 1/2-20	8	83♣	1-543891	Battery, cover	1
36	32136-5	Nut, slotted 3/4-16	2	84♣	1-543792	Wingnut, 1/4-20 nyloc.....	2
37	1-806800	Pin, cotter 9/64 x 1-1/2.....	2	85♣	1-413541	Trim-lok.....	1
38	1-807264	Key, 1/4sq x 2-5/8.....	1	86♣	103-1098	Stand w/ trim-lok	1
39 =◇	1-413004	Sheave assy, drive.....	1	87♣	1-543882	Bolt, hold down	2
40	1-603609	Bushing.....	1	88	323-7	Screw, 3/8-16 x 1 1/4.....	1

▽ Use Pro-Lock (nut type, Part no. 1-840022, 5 ml tube):

- on setscrew threads.
- on sheave retaining bolt in engine crankshaft.
- on sheave retaining bolt on clutch arm.

Exmark red touch up spray paint - P/N 1-850337

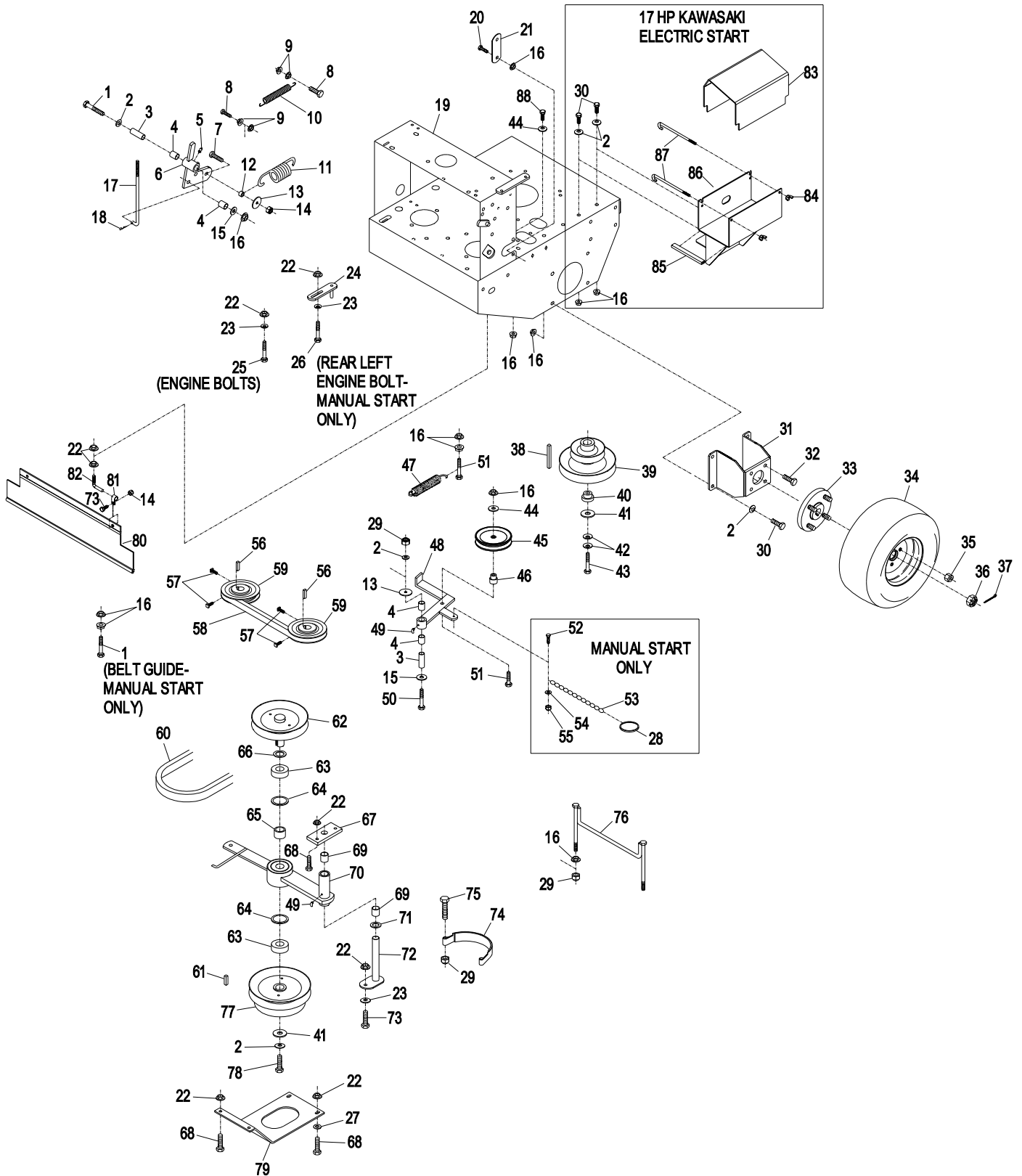
◇ Apply antiseize:

- between engine crankshaft and pump and blade drive sheave.
- between sheave w/shaft and bearing bores and sheave w/drum.
- between pump shafts and sheaves.

★ Manual start only

♣ Electric start only

ENGINE DECK GROUP



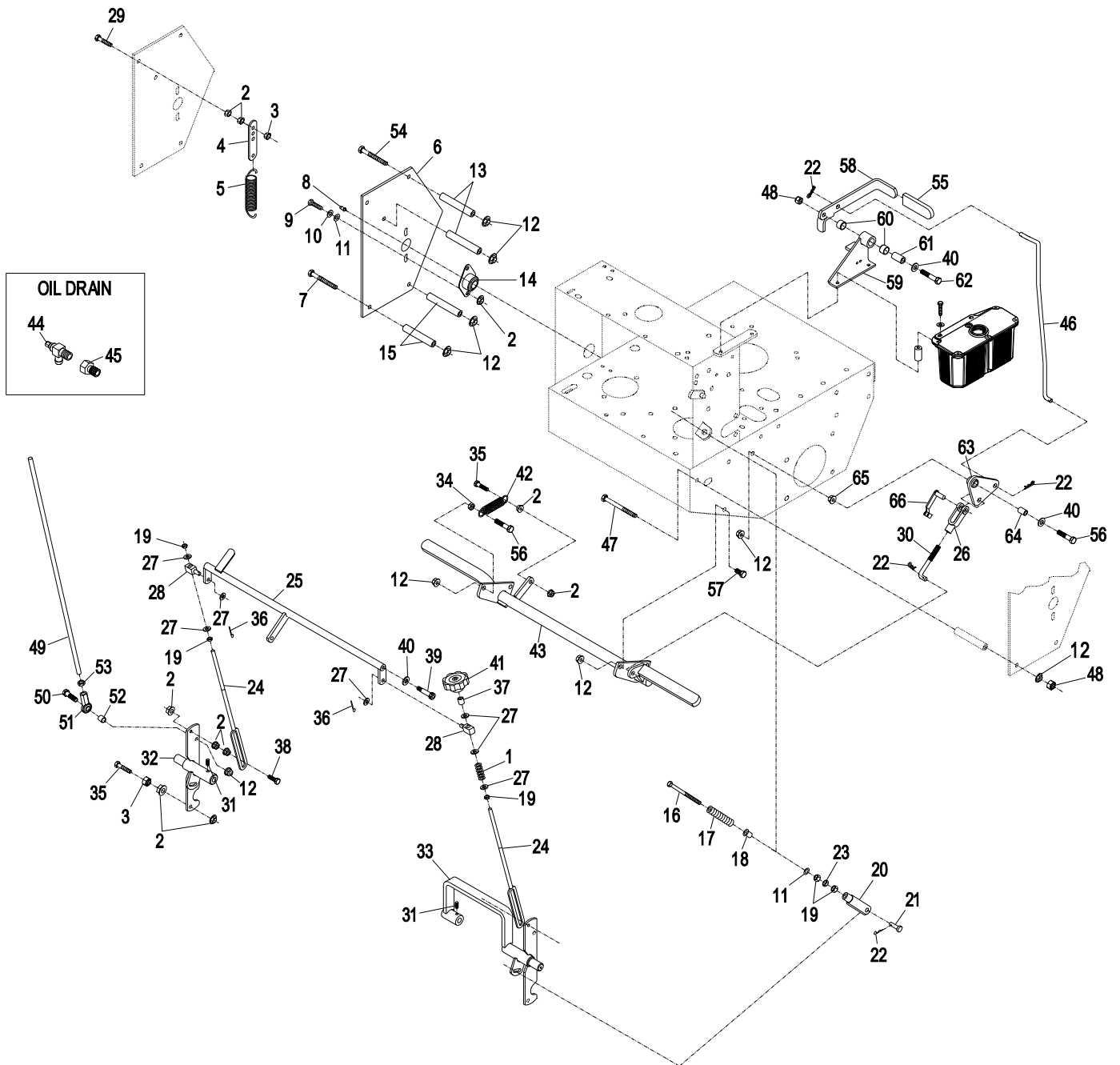
ENGINE DECK GROUP (con't.)

Ref. No.	Part No.	Description	Qty. Req'd.	Ref. No.	Part No.	Description	Qty. Req'd.
1	1-323245	Spring	1	36	3272-5	Cotter pin, 3/32 x 1/2	2
2	32128-20	Nut, 5/16-18 whizlock	20	37	1-603903	Spacer	1
3	3296-29	Nut, 5/16-18 nylock	4	38	1-403180	Screw, HH 5/16-18x1 3/8... ..	2
4	1-613089	Tab, spring extension	2	39◆	1-809056	Bolt,.375x.375 hx skt hd	2
5	1-603693	Spring, extension	2	40	3256-24	Washer, 3/8 SAE flat	4
6	1-413201-01	Shield, hydro	2	41	1-413151	Knob	1
7	323-16	Screw, 3/8-16 x 4	6	42	1-323161	Spring	1
8	302-19	Zerk, 1/4-28	2	43	103-2085-03	Brake weldmt, 36"	1
9	322-3	Screw, 5/16-18 x 3/4	4		103-2004-03	Brake weldmt, 48/52"	1
10	1-805005	Washer, 5/16 hvy spr lock	4	44□	103-1965	Valve, oil drain	1
11	3256-2	Washer, 1/4 std flat	6	45	103-1966	Adapter, M20-2.5/ 3/8 NPT	1
12	3290-357	Nut, 3/8-16 whizlock	15	46	1-413492	Linkage, upper brake	1
13	1-323195-01	Spacer, shield	4	47●	323-23	Screw,3/8-16 x 4 1/2	1
14	1-633102	Bearing, side flange	2	◇	323-16	Screw,3/8-16 x 4	1
15	1-323197-01	Spacer, shield	4	48●	3296-39	Nut,3/8-16 nylock	2
16	1-603737	Bolt, neutral return	2	◇	3296-39	Nut,3/8-16 nylock	1
17	103-0265	Spring, neutral return	2	49	103-1148	Rod,drive lever	2
18	1-603735	Bushing, nylon	2	50	323-8	Screw,3/8-16 x 1 1/2	2
19	3219-2	Nut, 5/16-24 hex	7	51	103-1167	Joint,.375 LH ball end	2
20	1-303105	Yoke	2	52	103-1166	Tube,pump link spacer	2
21	1-808280	Clevis pin, 5/16 x 1	2	53	3220-16	Nut,jam 3/8-24 LH	2
22	1-806003	Hairpin cotter	5	54●	323-16	Screw,3/8-16x4	1
23	3220-2	Nut, 5/16-24 jam	2	◇	323-23	Screw,3/8-16x4 1/2	1
24	1-413350	Rod, control	2	55	1-303020	Grip, lever	1
25	1-412203	Crank weldmt	1	56	323-9	Screw, HH 3/8-16 x 1 3/4	2
30	1-413489	Linkage, lower brake	1	57	323-4	Screw, HH 3/8-16 x 3/4	3
27	3256-23	Washer, 5/16 SAE	7	58	1-412501-03	Park brake lever weldmt... ..	1
28	1-603676	Swivel, short	2	59	1-414504	Weldmt, bracket w/bushings	1
29	1-800016	Tap Bolt 5/16-18 x 1-1/4	2	60	1-413347	Sleeve, bushing	2
26	1-633131	Yoke, brake linkage	1	61	1-413344	Bushing, pivot	1
31◆	1-803022	Setscrew, 5/16-18x5/8	2	62	323-10	Screw, HH 3/8-16 x 2	1
32	103-1190-01	Arm weldmt, LH	1	63	1-414508	Bellcrank, w/ bushings	1
33	103-1191-01	Arm weldmt, RH	1	64	1-303548	Bushing, plastic	1
34	3218-3	Nut, jam 3/8-16	1	65	32128-21	Nut, hex flange lock 3/8-16	1
35	322-6	Screw, 5/16-18 x 1-1/4	3	66	103-2399	Pin, clevis spring 3/8	1

Exmark red touch up spray paint - PN 1-850337

- ◆ Use Pro-Lock nut type, Part No. 1-840022 (.5 ml tube) on shoulder bolt & setscrew threads.
- ◇ Electric start only
- Manual start only
- Use Teflon Pipe Sealant or equivalent between oil drain valve and adapter.

ENGINE DECK GROUP (con't.)



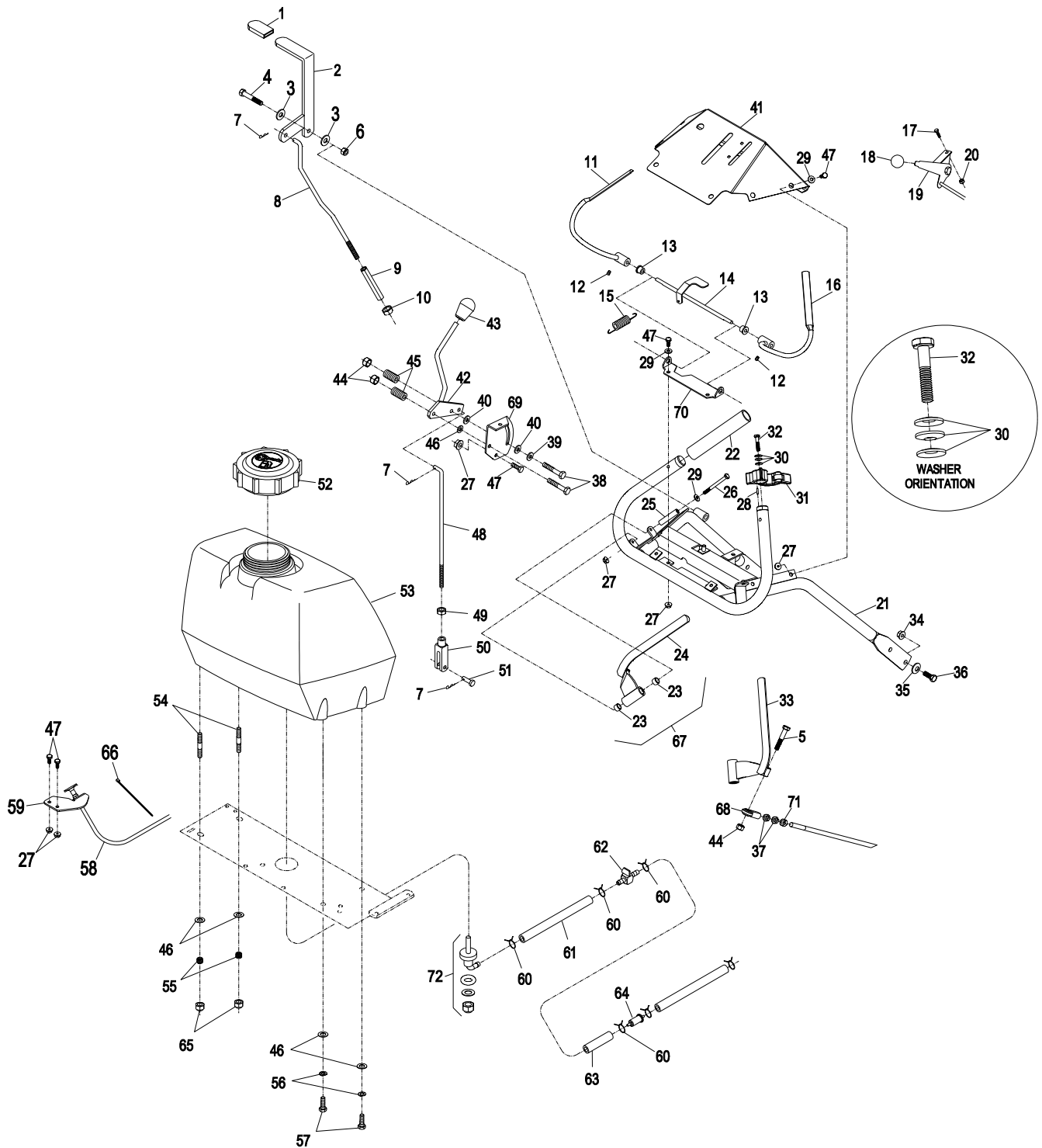
ECS UPPER HANDLES and CONTROLS

Ref. No.	Part No.	Description	Qty. Req'd.	Ref. No.	Part No.	Description	Qty. Req'd.
1	1-303020	Grip.....	1	38	322-10	Screw, 5/16-18 x 2.....	2
2	1-414234	Asm, Lever/grip(1-412295)..	1	39	1-603716	Washer, friction disc	1
3	3256-4	Washer, 3/8 Std flat.....	2	40	1-323244	Washer, friction.....	2
4	323-11	Screw, 3/8-16 x 2-1/4	1	41●	103-2457	Console w/ decals	1
5	322-9	Screw, 5/16-18 x 1 3/4	2	□	103-2458	Console w/ decals	1
6	3296-39	Nut, 3/8-16 nylock	1		103-0546-03	Wld, upper handle console	1
7	1-806003	Hairpin cotter	3	42	103-0773	Speed shift weldmt	1
8	103-1149	Link, blade engagement....	1	43	103-0423	Knob .38-16 nyloc.....	1
9	1-413279	Turnbuckle.....	1	44	3296-29	Nut, 5/16-18 nyloc.....	4
10	3217-7	Nut, 3/8-16 hex.....	1	45	1-323245	Spring, compression.....	2
11▽	103-1566-03	Lever weldmt opc LH	1	46	3256-23	Washer 5/16 SAE flat	5
12◆	1-803322	Setscrew, 5/16-24 x 5/16...	2	47●	321-3	Screw, 1/4-20 x 5/8.....	10
13	1-303365	Bushing, nylon.....	2	□	321-3	Screw, 1/4-20 x 5/8.....	12
14	103-0769-03	Lever axle weldmt, opc	1	48	1-413225	Rod, speed control	1
15	1-303363	Spring, opc extension.....	1	49	3220-2	Nut, 5/16-24 jam	1
16▽	103-1567-03	Lever weldmt, opc RH.....	1	50	1-303105	Yoke.....	1
17	1-807513	Bolt, #10-24 x 1/2 carriage	2	51	1-808280	Clevis pin 5/16 x 1	1
18	1-513592	Knob, red throttle.....	1	52	103-2107	Cap, fuel	1
19	1-633696	Cable, throttle	1	53	103-2893	Asm, fuel tank	1
20	3296-2	Nut, #10-24 nylock	2	54▽	1-633023	Stud, fuel tank.....	2
21	103-0770-03	Handle wld, upper ecs.....	1	55	1-633349	Spring, fuel tank.....	2
22	103-0815	Grip, handle bar.....	2	56	1-805005	Washer, 5/16 hvy lock	2
23	1-413152	Bearing	4	57	322-3	Screw, 5/16-18 x 3/4	2
24	103-2466-03	Lever, drive LH.....	1	58	103-1796	Cable, choke.....	1
25	103-0027	Bushing, drive lever.....	2	59	103-1797-01	Bracket, choke cable	1
26	321-14	Screw, 1/4-20 x 2 3/4	2	60	1-303077	Clamp, fuel line	4
27●	32128-33	Nut, 1/4-20 whizlock.....	12	61	1-603955	Hose, fuel line 6"	1
□	32128-33	Nut, 1/4-20 whizlock.....	14	62	1-603770	Valve, fuel	1
28	103-0464	Pin, 1/8 x 1/2 spring.....	2	63	1-303022	Hose, fuel line 8.5".....	1
29	3256-22	Washer 1/4 SAE flat.....	10	64	Kawasaki PN 41019-1055	filter w/6" fuel line...1	
30	1-303435	Washer, 1/4 disc spring.....	6	65	3296-47	Nut, nyloc thin 5/16-18	2
31	103-1371	Thumb latch asm RH(shown)	1	66	1-303287	Tie, plastic	1
	103-1372	Thumb latch asm LH	1	67	103-2513	Asm, drive lever RH	1
32◆	103-0235	Screw, 1/4-20 x 1-1/8 w/nylon	2		103-2514	Asm, drive lever LH	1
33	103-2465-03	Lever, drive RH	1	68	103-2463	Joint,.31 ball end.....	2
34	3290-357	Nut, 3/8-16 whizlock.....	4	69	103-0503	Bracket, shifter slide	1
35	98-5975	Washer, 3/8 disc spring.....	4	70	103-0489-03	Bracket, opc axle	1
36	323-6	Screw, 3/8-16 x 1	4	71	3219-3	Nut, reg hex 3/8-24	2
37	3220-3	Nut, jam 3/8-24.....	4	72◆	103-2605	Fitting, fuel blkhd w/screen	1

Exmark black touch up spray paint - Gloss black

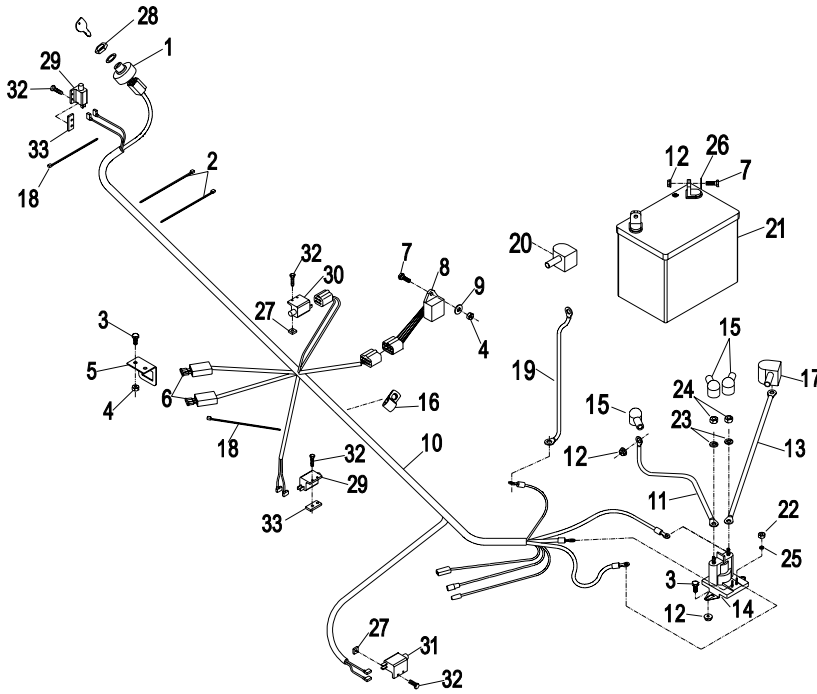
- ◆ Use Pro-Lock nut type, Part no. 1-840022 (.5cc tube) on setscrew threads, on thumb latch screws and on fuel fitting.
- ▽ Use Pro-Lock retaining type, Part no. 1-840023 (.5cc tube) on inside of bore of OPC hub and on fuel tank studs, where studs are inserted into tank.
- Electric start only
- Manual start only

ECS UPPER HANDLES and CONTROLS



ELECTRICAL GROUP

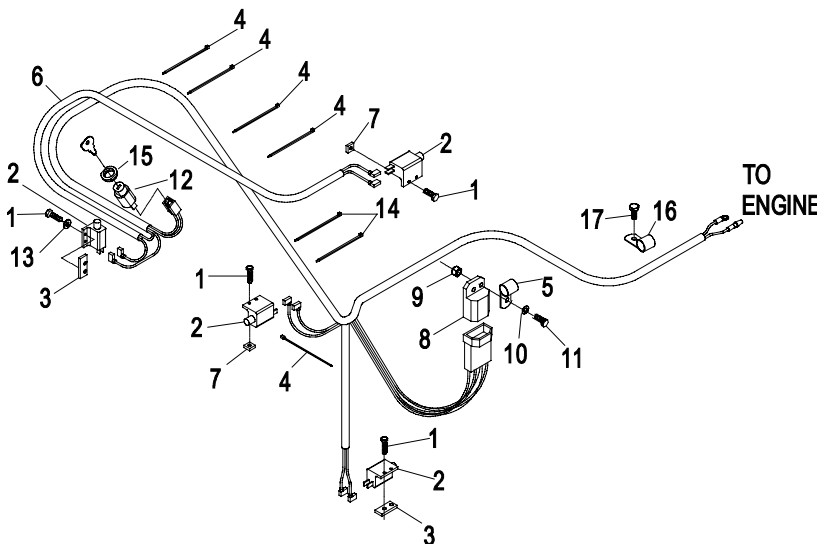
ELECTRIC START



Ref. No.	Part No.	Description	Qty. Req'd.
1	1-543070	Switch, ignition	1
	1-603511	Key, ignition	1
	103-2106	Key, Exmark logo.....	1
2	1-303335	Tie, plastic large.....	2
3	321-3	Screw, 1/4-20 x 5/8	2
4	3296-42	Nut, 1/4-20 nylock.....	3
5	1-323442-01	Bracket, fuse.....	1
6	1-816001	Fuse, 20A	2
7	321-4	Screw, 1/4-20 x 3/4	5
8	1-613198	Module	1
9	3256-22	Washer, 1/4 SAE flat	1
10	103-2006	Harness, wiring	1
11	1-633306	Cable, Solenoid/Starter +.....	1
12	32128-33	Nut, 1/4-20 whizlock	5
13	1-603490	Cable, battery +	1
14	1-513075	Switch, 12V solenoid	1
15	1-543393	Insulator, solenoid +.....	3
16	1-603727	Clip, loom	1
17	1-543391	Insulator, battery +	1
18	1-303287	Tie, plastic small	2
19	1-413540	Battery cable	1
20	1-543390	Insulator, battery -	1
21	103-0293	Battery, 12V MNFLD.....	1
22	3219-14	Nut, hex #10-32 GR2,YZ	2
23	3253-4	Washer, lock .313	2
24	3220-2	Nut, jam 5/16 - 24.....	2
25	3253-17	Washer, lock .190	2
26	3256-2	Washer, flat 1/4 std	2
27	1-804002	Nut, square #10-24	4
28	103-0498	Nut, Ignition Switch.....	1
29	1-513051	Switch, N.O.....	2
30	1-633111	Switch N.O / N.C.....	1
31	1-513152	Switch, N.C.	1
32	3290-500	Screw, #10-24 x 5/8.....	8
33	1-633181	Plate, tapped.....	2

● Use dielectric grease on all electrical connectors.

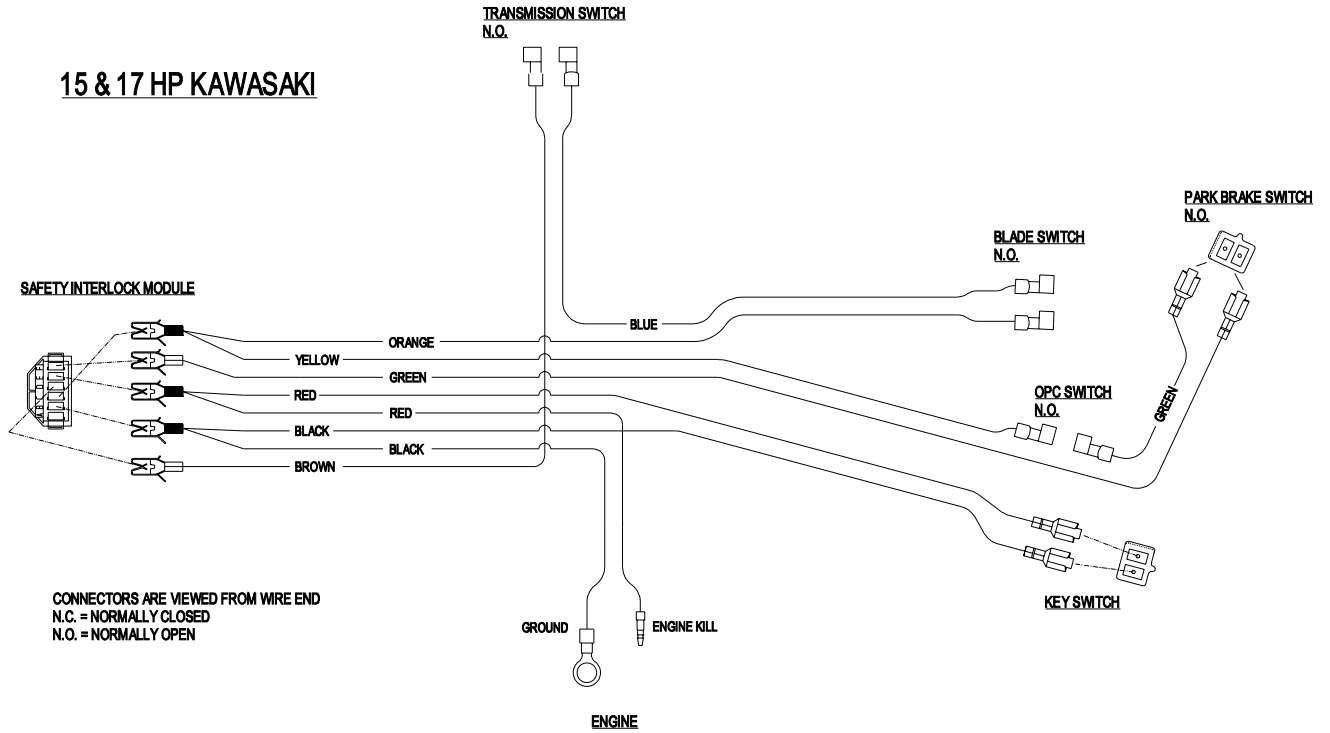
MANUAL START



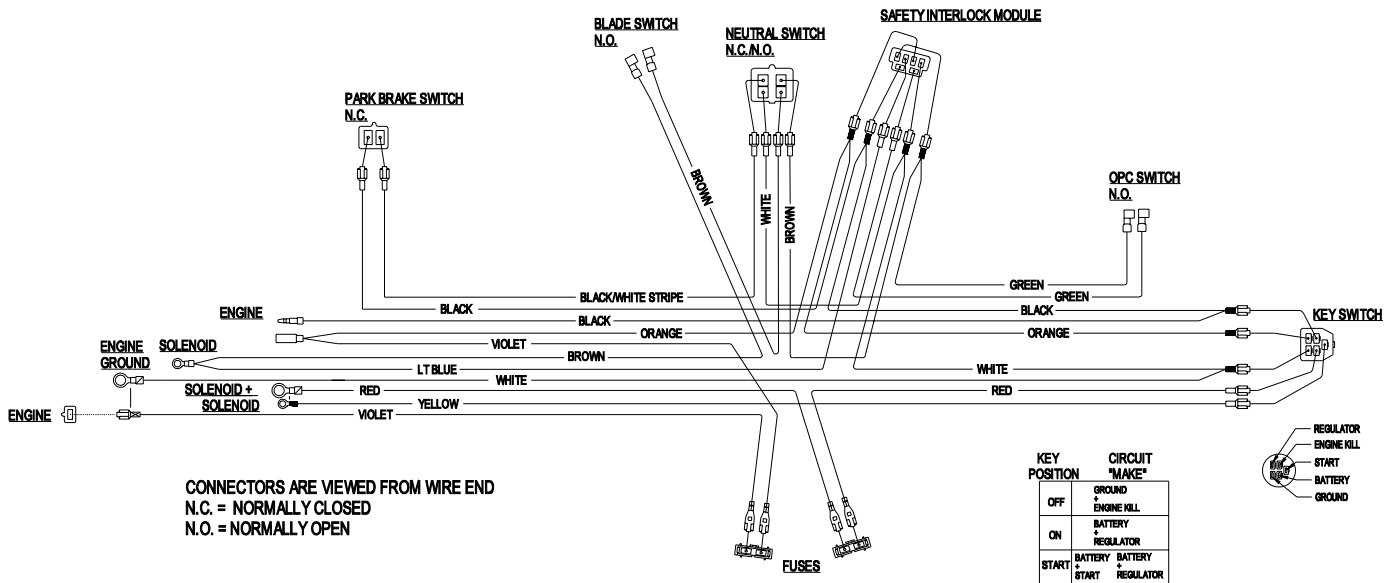
Ref. No.	Part No.	Description	Qty. Req'd.
1	3290-500	Screw, #10-24 x 5/8	8
2	1-513051	Switch, N.O.....	4
3	1-633181	Plate, tapped.....	2
4	1-303287	Tie, plastic small	5
5	1-323229	Clip, loom 3/8.....	1
6	103-2005	Harness, wiring	1
7	1-804002	Nut, square #10-24	4
8	1-323430	Module, interlock.....	1
9	3296-42	Nut, nyloc 1/4-20.....	1
10	3256-22	Washer, 1/4 SAE flat.....	1
11	321-4	Screw, 1/4-20 x 3/4	1
12	1-403121	Switch, on/off	1
	1-603511	Key, ignition	1
	103-2106	Key, Exmark logo.....	1
13	3256-14	Washer, flat #10	1
14	1-303335	Tie, plastic large	2
15	103-0498	Nut, Ignition Switch	1
16	1-413510	Clip, loom 1/2.....	1
17	33114-016	Screw, M8-1.25 x 16mm	1

● Use dielectric grease on all electrical connectors.

WIRING DIAGRAMS



17 HP KAWASAKI ELECTRIC START



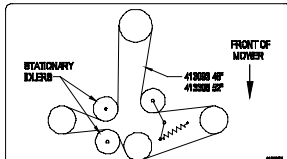
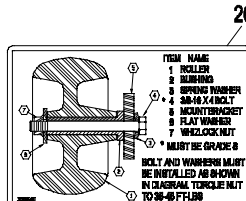
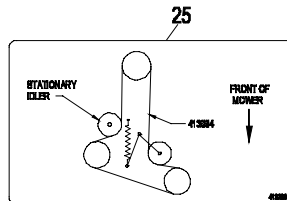
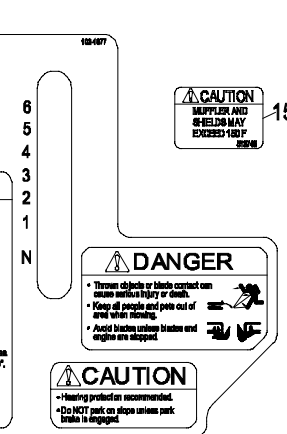
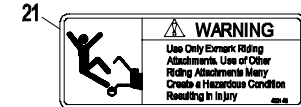
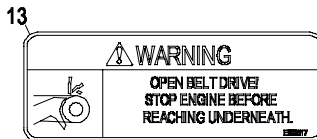
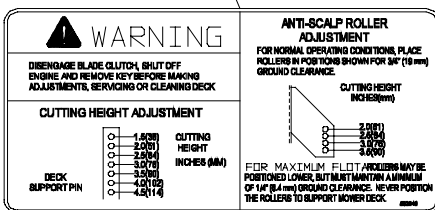
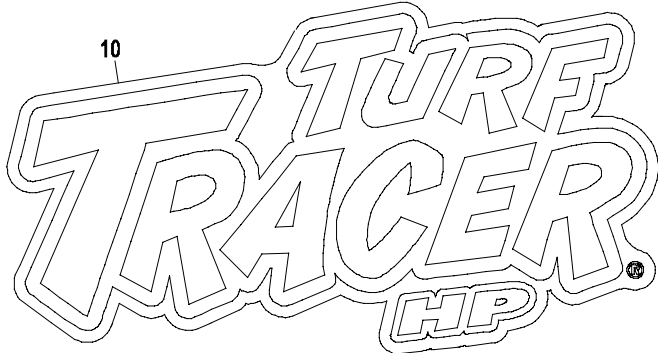
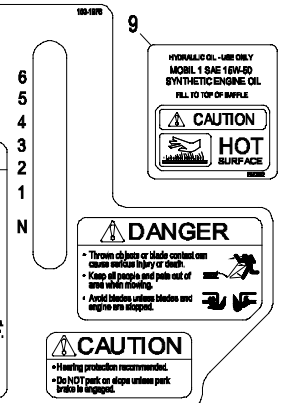
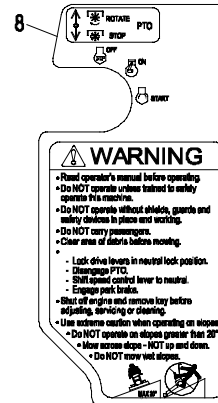
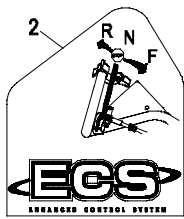
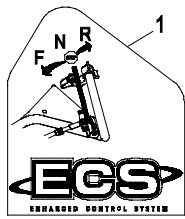
DECALS

Ref. No.	Part No.	Description	Qty. Req'd.	Ref. No.	Part No.	Description	Qty. Req'd.
1	103-2242	Decal, ECS instruction LH	1	16	1-413214	Decal, tracking	1
2	103-2243	Decal, ECS instruction RH....	1	17	1-553049	Decal, mower deck	1
3	1-303520	Decal, trivantage	1	18	1-323411	Decal, commercial 36	1
4	103-1077	Decal, bolt torque	1	19	1-403131	Decal, commercial 48	1
5	1-303508	Decal, discharge warning.....	1	20	1-403132	Decal, commercial 52	1
6	1-413421	Decal, indicator	1	21	1-403143	Decal, sulky warning.....	1
7	103-2103	Decal, park brake	1	22▲	1-513747	Decal, battery.....	1
8▲	103-1976	Decal, ECS console	1	23	1-603845	Decal, hyd drive release	1
9	1-523552	Decal, hydraulic tank.....	1	24	98-5954	Decal, missing cover (36).....	1
10	103-2939	Decal, TTHP model.....	1		98-5954	Decal, missing cover (48 & 52)	3
11	103-1798	Decal, throttle	1	25	1-413206	Decal, belt routing (36).....	1
12	103-1983	Decal, exmark logo	1	26	1-323540	Decal, roller mounting.....	1
13	1-303517	Decal, belt drive	1	27	1-413327	Decal, belt routing (48 & 52) ..	1
14◇	103-1977	Decal, ECS console	1	28	1-403005	Decal, danger	2
15	1-513746	Decal, muffler	2		103-2461	Decal kit	

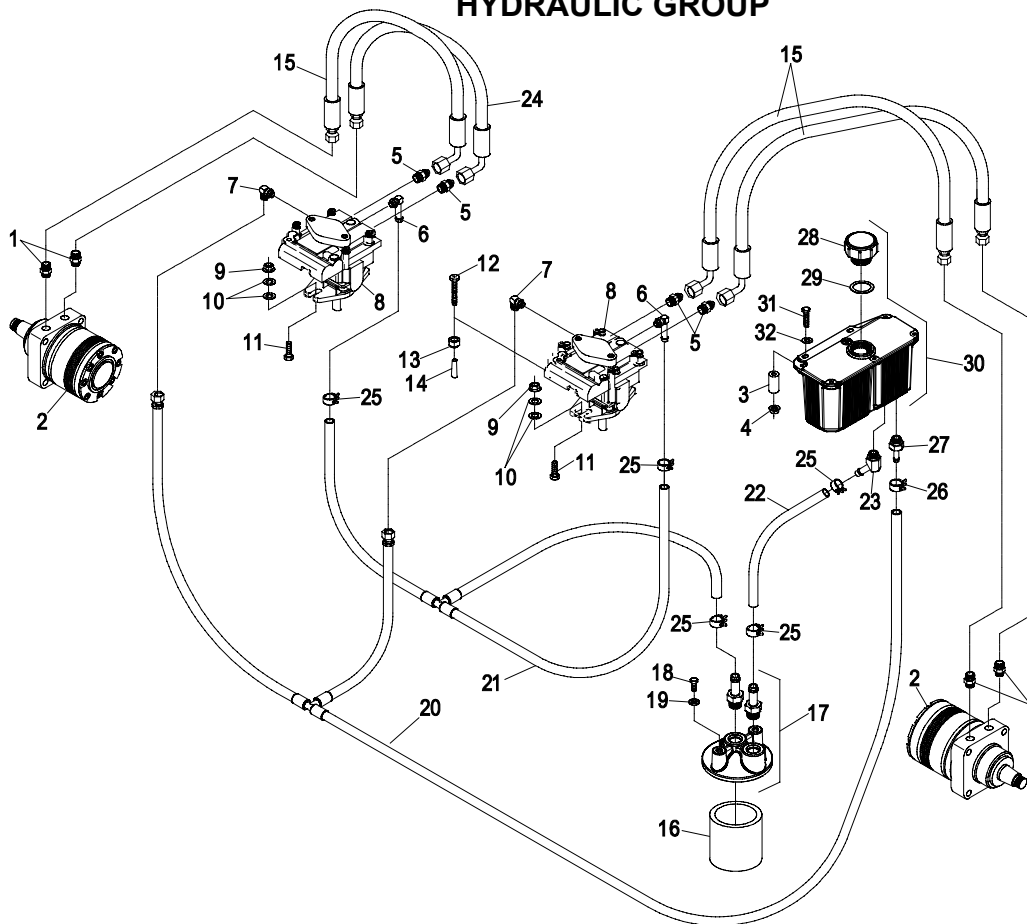
◇ Manual start models only

▲ Electric start models only

DECALS



HYDRAULIC GROUP



Ref. No.	Part No.	Description	Qty. Req'd.	Ref. No.	Part No.	Description	Qty. Req'd.
1	1-603991	Fitting, straight connector..	4	15	1-613034	Hose, high pressure.....	3
	1-603919	Boss O-Ring	1	16	1-513211	Element, oil filter.....	1
	1-603992	Flare O-Ring.....	1	▽	1-523541	Element, oil filter(winter)	1
2	1-603718	Wheel motor	2	17	103-2889	Asm, filter head	1
	1-000138	Kit, Bearing.....	1		103-1912	Adapter, straight.....	2
	1-000119	Kit, seal.....	1		1-603921	O-Ring.....	1
3	103-2191	Spacer, hydraulic tank.....	2	18	321-3	Screw, 1/4-20 x 5/8	2
4	32128-33	Nut, whizlock 1/4-20	2	19	1-805004	Lockwasher.....	2
5	1-603990	Adapter, straight thread.....	4	20	103-2073	Asm, case drain hose	1
	1-603920	Boss O-Ring	1	21	103-2057	Asm, charge hose	1
	1-603992	Flare O-Ring.....	1	22	103-2959	Hose, charge.....	1
6	1-603989	Elbow, 90°	2	23	103-1807	Elbow, 45°	1
	1-603923	O-Ring	1		1-603921	O-Ring.....	1
7	1-513840	Elbow - 90°	2	24	1-323241	Hose, high pressure.....	1
	1-603921	O-Ring	1	25	103-1988	Clamp, hose (11/16)	5
8	1-613042	Pump, hydro	2	26	103-1716	Clamp, hose (17/32)	1
	2513018	Kit, seal overhaul.....	1	27	103-1801	Adapter, straight.....	1
9	3290-357	Nut, whizlock 3/8-16	4		1-603921	O-Ring.....	1
10	3256-3	Washer, 5/16 std	8	28	103-1948	Cap, hydraulic reservoir	1
11	323-7	Screw, 3/8-16 x 1-1/4	4	29	103-1949	Gasket, reservoir cap.....	1
12	1-801063	Screw, 1/4-20x2 pan head	2	30	103-1947	Asm, reservoir w/ decal.....	1
13	3296-42	Nut, nylock 1/4-20	2	31	321-15	Screw, 1/4-20 x 2 1/2	2
14	1-613073	Grip, dump valve	2	32	3256-22	Washer, 1/4 SAE flat.....	2

Emark black touch up spray paint - gloss black

▽ Use only for operation below 32°F(0°C)

NOTES

NOTES

**SEE EXMARK'S COMPLETE
LINE OF PRODUCTS FOR TURF CARE**

LAZER Z[®]

LAZER Z[®] HP

LAZER Z[®] XP

TURF RANGER[®]

TURF TRACER[®]

TURF TRACER[®] HP

VIKING HYDRO

METRO[®]

METRO[®] HP

SELF STEERING SULKY

ULTRA VAC[™]

GRASS CATCHER

MICRO-MULCH[™] ACCESSORY

©1997 – 2002
EXMARK MFG. CO. INC.
INDUSTRIAL PARK BOX 808
BEATRICE, NE 68310
ALL RIGHTS RESERVED

PART NO. 103-2926 Rev. A
(402) 223-6300
FAX (402) 223-5489
PRINTED IN U.S.A.

