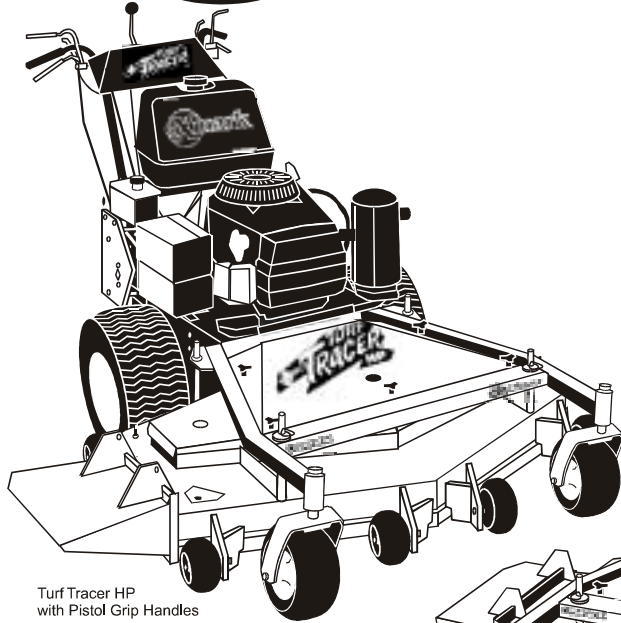
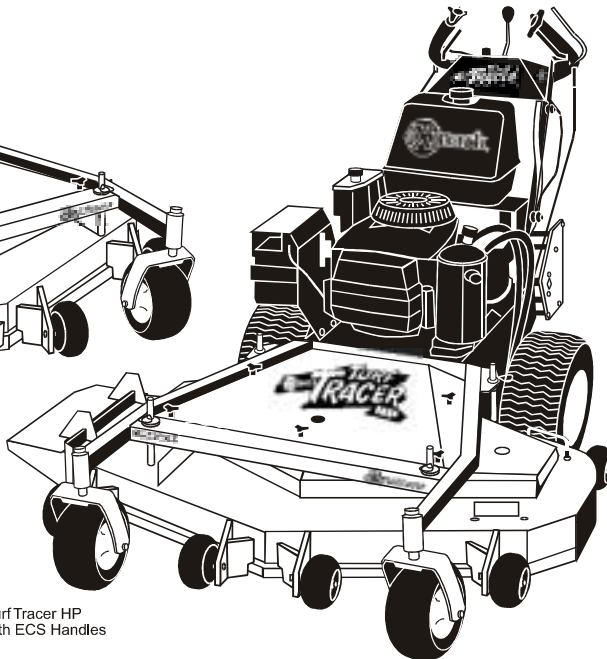


For Serial Nos.
320,000 & Higher



Turf Tracer HP
with Pistol Grip Handles



Turf Tracer HP
with ECS Handles

PART'S MANUAL

TURF TRACER[®] HP

CONGRATULATIONS on the purchase of your new Exmark mower. This product has been carefully designed and manufactured to give you a maximum amount of dependability and years of trouble-free operation.

If additional information is needed, or should you require trained mechanic service, contact your authorized Exmark equipment dealer or distributor.

If you need to order replacement parts from your dealer, always give the model number and serial number of your mower as well as the part number, description and quantity of the part needed.

The Serial No. plate is located next to the fuel tank on the top left hand side of the fuel tank support.

For ease of ordering and reference, we suggest that you record the information requested in the following identification table.

Model No. _____

Serial No. _____

Engine Model No. _____

Engine Serial No. _____

Date Purchased _____

Paste Label From
Literature Packet Here

EXMARK PARTS PLUS® PROGRAM

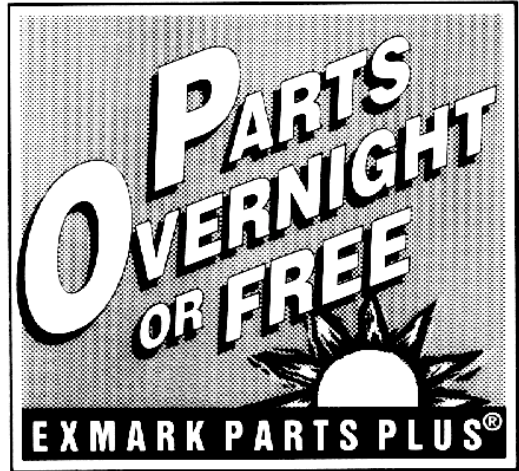
EFFECTIVE DATE: September 1, 1995

Program

If your Exmark dealer does not have the Exmark part in stock, Exmark will get the parts to the dealer the next business day or the part will be FREE* Guaranteed!!

How the Program Works

1. If dealer does not have part in stock for a "down" unit at the time of request by customer, the dealer contacts his distributor by 1:00 p.m., local time, and requests Exmark Parts Plus® shipment of six (6) line items or less.
2. Distributor ships part(s) to dealer or customer, as requested by dealer, same day, overnight UPS. Distributor bills dealer for part and freight charges where applicable.
3. If distributor does not have the part(s) in stock to satisfy Exmark Parts Plus® order, he contacts Exmark by 3:00 p.m., central time, with an Exmark Parts Plus® order of six (6) line items or less.
4. If order is received by 3:00 p.m. central time, Exmark ships part(s) direct to dealer or customer, as requested by distributor, same day, overnight UPS. Exmark bills the distributor for parts and shipping charges, where applicable.
5. The customer pays for the part and freight if it is shipped under the Exmark Parts Plus® and if it arrive in accordance to the program.
6. Who pays for the part and freight if it fails to arrive overnight in accordance to the program?
 - A. Under any circumstance the customer does not pay.
 - B. If the part does not arrive overnight due to:
 1. The dealer not submitting the Exmark Parts Plus® order to his Exmark distributor by 1:00 p.m., the dealer pays for the part and freight.
 2. The Distributor being unable to ship the part the same day or not submitting the Exmark Parts Plus® order to Exmark by 3:00 p.m., central time, the Distributor pays for the part and freight.
 3. Exmark being unable to ship the part and the Exmark parts order is received by 3:00 p.m., central time, Exmark pays for the part and freight.
 4. If the part does not arrive overnight due to the shipper (UPS), the shipper pays for the freight and Exmark pays for the part.



The following restrictions apply -- The Exmark Parts Plus® Program is available only through participating Exmark Dealers and applies only to orders submitted on this program Monday through Thursday. Parts Plus service is available only in the contiguous United States. UPS has initiated a Saturday delivery program to many areas of the continental United States and can be requested for an overnight shipment on Friday to be delivered Saturday. The next day air charge, plus the Saturday delivery fee will be the responsibility of the purchaser. Exmark Mfg. will assume no responsibility for Saturday delivery shipments. To qualify, all Exmark Parts Plus® orders must be received by Exmark by 3:00 p.m., central time. Orders must be six (6) line items or less. Exclusions from the Exmark Parts Plus® Program are: Any wholegood or accessory in its entirety, engines and engine replacement parts, 5-speed Peerless transmissions and 5-speed transaxles, hydraulic or hydrostatic wheel motors, cutter decks and engine decks or any item exceeding United Parcel Service size and weight restrictions.

Due to UPS restrictions, aerosol spray paint is considered a hazardous material and cannot be shipped via UPS next day or Second Day Air.

Exmark Manufacturing stocks a limited supply of parts for transaxles, pumps and wheel motors. These parts can be ordered for Next Day Air shipment but will not be guaranteed per the Parts Plus Program.



**READ OPERATOR'S MANUAL BEFORE
OPERATING OR SERVICING EXMARK EQUIPMENT.**

TABLE OF CONTENTS

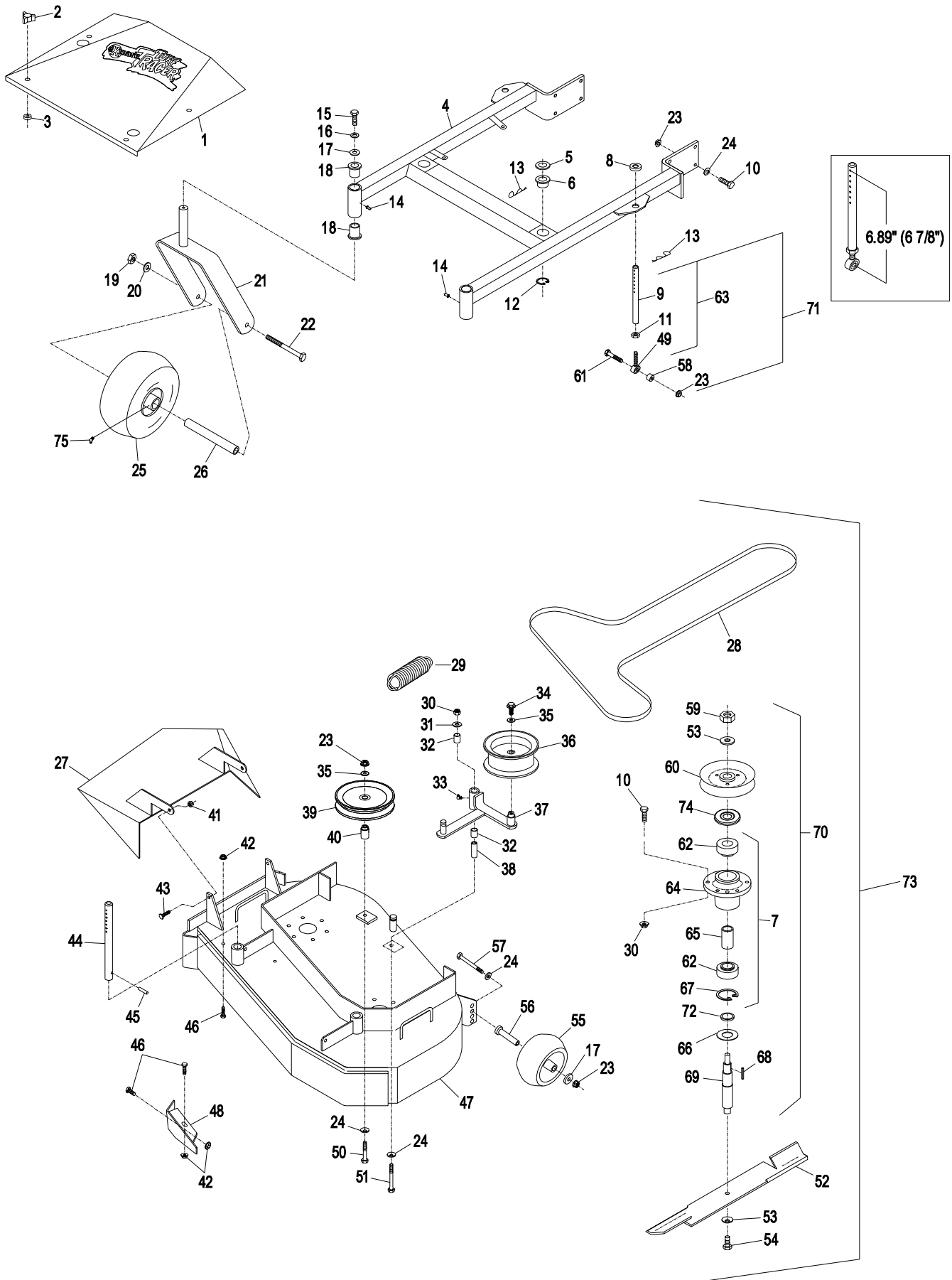
<u>Description</u>	<u>Page</u>
Decals.....	18-19
Electrical Group	17
Engine Deck Group.....	8-11
52" Mower Deck	6-7
48" Mower Deck	4-5
Hydraulics Group	16
36" Mower Deck	2-3
Upper Handles & Controls, Pistol Grip.....	12-13
Upper Handles & Controls, ECS.....	14-15
Wiring Diagrams	20

36" MOWER DECK

Ref. No.	Part No.	Description	Qty. Req'd.	Ref. No.	Part No.	Description	Qty. Req'd.
1	1-414386	Shield, belt w/decals	1	40	1-413113	Bushing, Idler	1
	1-413098-01	Shield, belt	1	41	3296-29	Nut, Nyloc 5/16-18	2
2	1-323385	Knob, belt shield	4	42	32128-20	Nut, Whizlock 5/16-18.....	3
3	1-323417	Washer, belt shield	4	43	322-5	Screw, Hex Cap 5/16-18 x 1	2
4	1-414309	Support wld w/bushings&decals...	1	44	1-603001	Rod, Deck Support.....	2
	1-412108-01	Support weldment.....	1	45	1-806332	Rollpin, 1/4x1 1/2	2
5	1-413425	Spacer, Front Deck Support	2	46	322-2	Screw, Hex Cap 5/16-18 x 5/8.....	3
6	1-513336	Bushing, deck support	2	47	1-414383	Deck weldmt w/decals, discharge Baffle & support rods	1
7	1-634619	Housing w/Brgs, Spacer & Ring... 2			1-412104-01	Deck weldmt	1
8	1-323539	Spacer.....	2	48	1-522480-01	Baffle, discharge	1
9	1-413525	Link, Deck Support.....	2	49	1-613204	Ball Joint	2
10	323-7	Screw, Hex Cap 3/8-16 x 1 1/4....	20	50	323-13	Screw, Hex Cap 3/8-16 x 2 3/4....	1
11	3219-3	Nut, Reg Hex 3/8-24	2	51	1-800805	Screw, Hex Cap 3/8-16 x 3 1/2 G8	1
12	32120-33	Ring, Retaining	2	52	1-633482	Blade, 18.00 notched air foil	2
13	1-806009	Hairpin, Cotter .177 #206.....	4		1-613251	Blade, 18.00 solid air foil.....	2
14	302-52	Zerk, Straight 1/8.....	2		1-633484	Blade, 18.00 mulching.....	2
15	323-6	Screw, Hex Cap 3/8-16x1	2		1-633485	Blade, 18.00 low lift (optional).....	2
16	3253-5	Washer, 3/8 heavy spring.....	2		103-1578	Blade, 18.00 bahia	2
17	1-373034	Washer, Swivel.....	3	53	1-513208	Washer, Spring disc.....	4
18	1-303514	Bearing, Flange	4	54	103-1026	Screw, Hex Cap 5/8-11 x 1 G8	2
19	3217-9	Nut, Reg Hex 1/2-13	2	55	1-603299	Roller, antiscalp	1
20	3253-7	Washer, Lock Hlcl Spg 1/2 Reg....	2	56	1-603602	Bushing, roller	1
21	1-522143-01	Caster weldment.....	2	57	98-5961	Screw, Hex Cap 3/8-16x4 Gr. 8... 1	
22	325-20	Screw, Hex Cap 1/2-13x6.....	2	58	1-603050	Bushing Spacer.....	2
23	3290-357	Nut, Whizlock 3/8-16	12	59	3219-6	Nut, Reg hex 5/8-18.....	2
24	98-5975	Washer, Disc Spring 3/8.....	11	60	1-413424	Sheave w/Hub	2
25	103-1224	Tire & Wheel Asm(semi-pneumatic) .	2	61	323-9	Screw, hex Cap 3/8-16x1 3/4.....	2
	1-513809	Roller Bearing	2	62	1-513016	Bearing	4
❖	103-2170	Bushing (semi-pneumatic)	4	63▲	1-414521	Link, Assembly.....	2
26■	103-2169	Spacer (semi-pneumatic)	2	64	1-323532	Housing, Spindle	2
27	103-2431-01	Chute weldment, discharge	1	65	1-323528	Spacer, Bearing	2
28	1-413094	Belt, deck drive.....	1	66	1-633573	Guard, Bearing-Bottom	2
29	1-633151	Spring, extension	1	67	32120-8	Ring, Snap	2
30	3296-39	Nut, Nyloc 3/8-16	13	68	1-807268	Key, machine	2
31	3256-4	Washer, Flat Std 3/8.....	1	69	1-413330	Shaft, Spindle	2
32	1-513034	Pivot Bearing.....	2	70	1-414335	Housing,Cutter assembly.....	2
33	302-40	Zerk, 90 degree 1/4-28	1	71	1-611216	Kit, Link Assembly.....	2
34	3234-11	Bolt, Hex Whizlock 3/8-16x1	1	72	1-323533	Spacer.....	2
35	3256-24	Washer, Flat 3/8 SAE	2	73	103-0320	Assembly,Cutting deck complete.	1
36	1-413099	Pulley, Idler	1	74	103-1330	Guard,bearing top	2
37	1-412134-03	Arm, weldmt.....	1	75	302-61	Zerk, 45 degree 1/4-28	2
	1-414144	Arm, weldmt w/bushings.....	1	76□	103-2171	Kit,semi-pneumatic wheel replacement....	1
38	1-603384	Bushing, Idler Pivot.....	1				
39	1-613098	Pulley, Idler	1				

- Requires installation of Micro-Mulch accessory for proper mulching. Mulch kit P/N MK363(36")
Exmark red touch up spray paint - P/N 1-850337
- ▲ Link assembly must be assembled to 6.89" (or approximately 6 7/8") length between center of ball joint and center of furthest hole. See diagram on next page.
- ❖ Bushing for semi-pneumatic tires can be identified by a groove on the face.
- Front caster spacer for semi-pneumatic tires can be identified by yellow zinc plating.
- Kit 103-2171 used to install semi-pneumatic casters on machines originally fitted with pneumatic casters. Includes 103-1224 & 103-2169. Order 2 per machine.

36" MOWER DECK

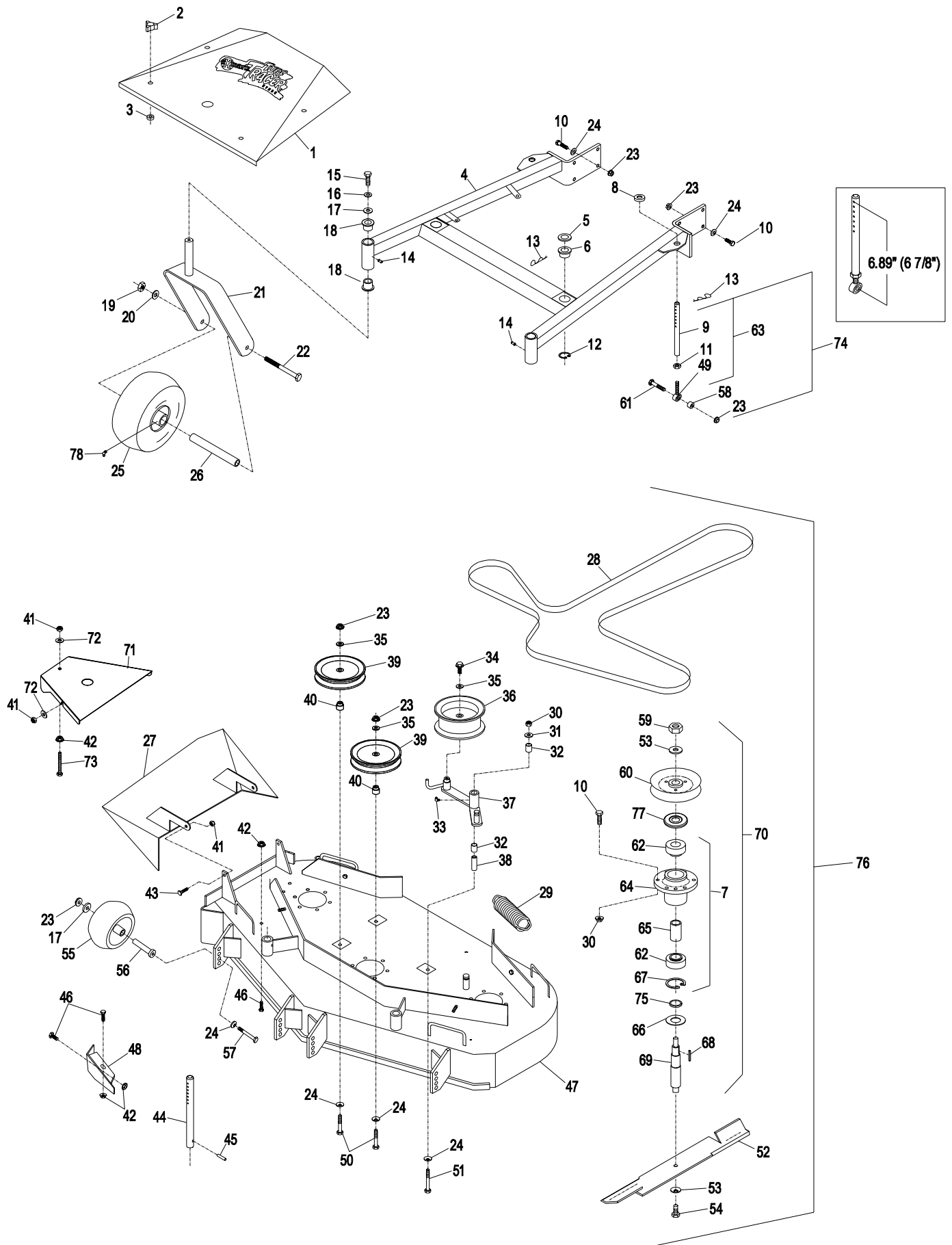


48" MOWER DECK

Ref. No.	Part No.	Description	Qty. Req'd.	Ref. No.	Part No.	Description	Qty. Req'd.
1	1-414387	Shield, belt w/decals	1	41	3296-29	Nut, Nyloc 5/16-18	8
	1-413101-01	Shield, belt	1	42	32128-20	Nut, Whizlock 5/16-18.....	5
2	1-323385	Knob, belt shield	4	43	322-5	Screw, Hex Cap 5/16-18 x 1	2
3	1-323417	Washer, belt cover.....	4	44	1-603001	Rod, Deck Support.....	2
4	1-414310	Support wld w/bushings & decals	1	45	1-806332	Rollpin, 1/4x1 1/2	2
	1-412110-01	Support weldmt.....	1	46	322-2	Screw, Hex Cap 5/16-18 x 5/8.....	3
5	1-413425	Spacer, Front Deck Support	2	47	1-414384	Deck weldmt w/decals, discharge Baffle & support rods	1
6	1-513336	Bushing, deck support	2		1-412106-01	Deck weldmt	1
7	1-634619	Housing w/Brgs, Spacer & Ring... 3		48	1-522480-01	Baffle, discharge	1
8	1-323539	Spacer	2	49	1-613204	Ball Joint	2
9	1-413525	Link, Deck Support.....	2	50	323-13	Screw, Hex Cap 3/8-16 x 2 3/4....	2
10	323-7	Screw, Hex Cap 3/8-16 x 1 1/4.....	26	51	1-800805	Screw, Hex Cap 3/8-16 x 3 1/2 G8	1
11	3219-3	Nut, Reg Hex 3/8-24	2	52	1-323515	Blade, 16.25 notched air foil	3
12	32120-33	Ring, Retaining	2		1-413438	Blade, 16.25 solid air foil.....	3
13	1-806009	Hairpin, Cotter .177 #206.....	4	•	1-403148	Blade, 16.25 mulching.....	3
14	302-52	Zerk, Straight 1/8	2		1-403149	Blade, 16.25 low lift (optional).....	3
15	323-6	Screw, Hex Cap 3/8-16x1	2		103-1577	Blade, 16.25 bahia.....	3
16	3253-5	Washer, 3/8 heavy spring	2	53	1-513208	Washer, Spring disc.....	6
17	1-373034	Washer, Swivel.....	6	54	103-1026	Screw, Hex Cap 5/8-11 x 1 G8 ...	3
18	1-303514	Bearing, Flange	4	55	1-603299	Roller, antiscalp	4
19	3217-9	Nut, Reg Hex 1/2-13	2	56	1-603602	Bushing, roller	4
20	3253-7	Washer, Lock Hlcl Spg 1/2 Reg.....	2	57	98-5961	Screw, Hex Cap 3/8-16x4 Gr. 8... 4	
21	1-522143-01	Caster weldment.....	2	58	1-603050	Bushing Spacer.....	2
22	325-20	Screw, Hex Cap 1/2-13x6.....	2	59	3219-6	Nut, Reg hex 5/8-18.....	3
23	3290-357	Nut, Whizlock 3/8-16	16	60	1-413424	Sheave w/Hub	3
24	98-5975	Washer, Disc Spring 3/8.....	15	61	323-9	Screw, hex Cap 3/8-16x1 3/4.....	2
25	103-1224	Tire & Wheel Asm (semi pneumatic)	2	62	1-513016	Bearing	6
❖	1-513809	Roller Bearing	2	63◆	1-414521	Link, Assembly.....	2
26■	103-2170	Bushing (semi-pneumatic).....	4	64	1-323532	Housing, Spindle	3
	103-2169	Spacer (semi-pneumatic).....	2	65	1-323528	Spacer, Bearing	3
27	103-2431-01	Chute weldment, discharge	1	66	1-633573	Guard, Bearing-Bottom	3
28	1-413093	Belt, deck drive.....	1	67	32120-8	Ring, Snap	3
29	1-633151	Spring, extension	1	68	1-807268	Key, machine	3
30	3296-39	Nut, Nyloc 3/8-16	19	69	1-413330	Shaft, Spindle	3
31	3256-4	Washer, Flat Std 3/8.....	1	70	1-414335	Housing, Cutter Assembly	3
32	1-513034	Pivot Bearing.....	2	71	1-653482-01	Shield, Belt.....	2
33	302-40	Zerk, 90 degree 1/4-28	1	72	3256-3	Washer, Flat Std 5/16	6
34	3234-11	Bolt, Hex Whizlock 3/8-16x1.....	1	73	1-800017	Bolt, Hex Tap 5/16-18 3 1/4	2
35	3256-24	Washer, Flat 3/8 SAE	3	74	1-611216	Kit, Link Assembly.....	2
36	1-413099	Pulley, Idler	1	75	1-323533	Spacer.....	3
37	1-412394	Arm, weldmt.....	1	76	103-0321	Assembly,Cutting deck complete.	1
	1-414398	Arm, weldmt w/bushings	1	77	103-1330	Guard,bearing top	3
38	1-603384	Bushing, Idler Pivot.....	1	78	302-61	Zerk, 45 degree 1/4-28	2
39	1-613098	Pulley, Idler	2	79□	103-2171	Kit,semi-pneumatic wheel replacement....	1
40	1-413113	Bushing, Idler.....	2				

- Requires installation of Micro-Mulch accessory for proper mulching. Mulch kit P/N MK483(48")
Exmark red touch up spray paint - P/N 1-850337
- ◆ Link assembly must be assembled to 6.89" (or approximately 6 7/8") length from center of ball joint to center of furthest hole. See diagram on next page.
- ❖ Bushing for semi-pneumatic caster tires can be identified by a groove on the face.
- Front caster spacer for semi-pneumatic caster tires can be identified by yellow zinc plating.
- Kit 103-2171 used to install semi-pneumatic casters on machines originally fitted with pneumatic casters. Includes 103-1224 & 103-2169. Order 2 per machine.

48" MOWER DECK

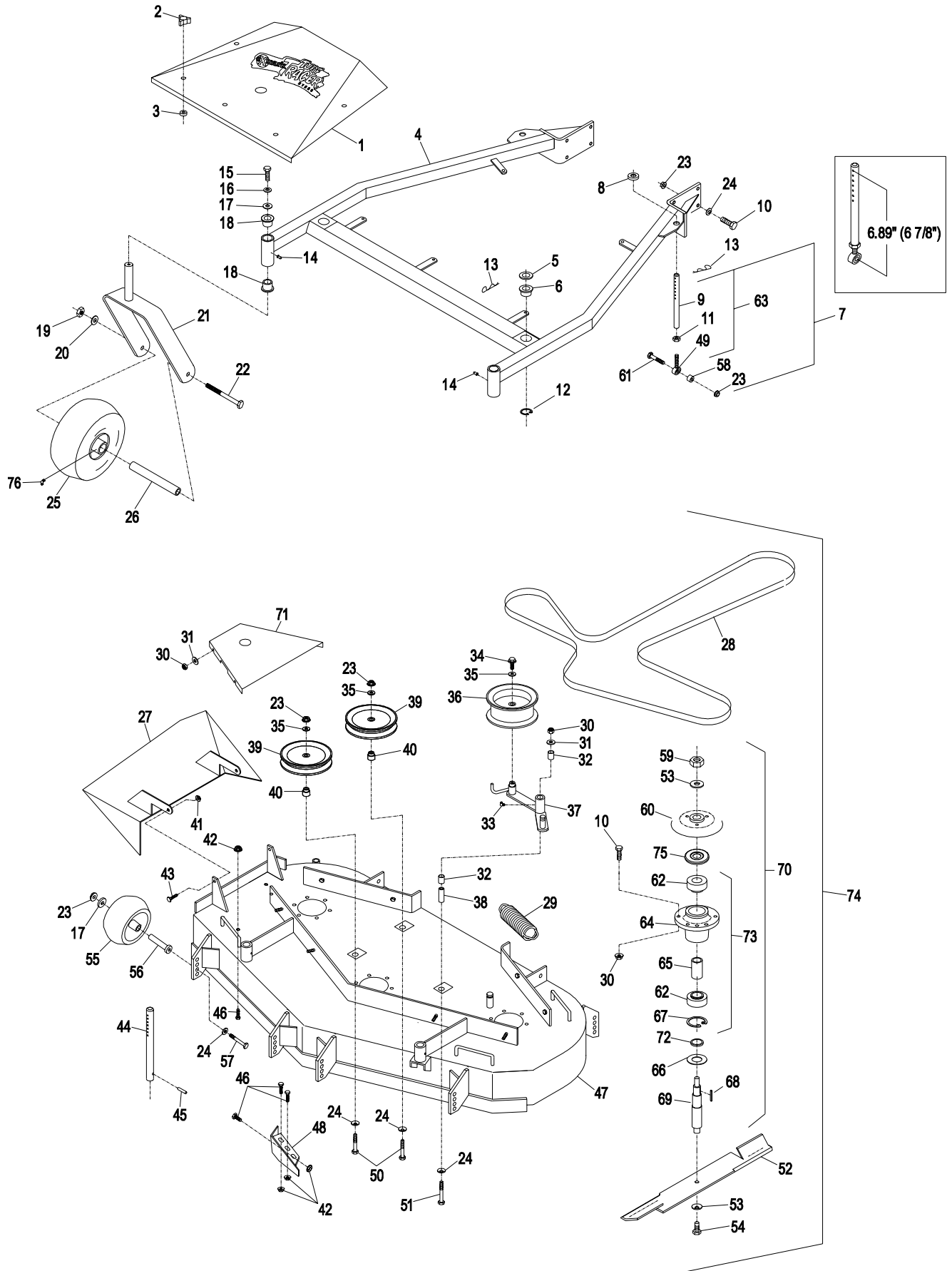


52" MOWER DECK

Ref. No.	Part No.	Description	Qty. Req'd.	Ref. No.	Part No.	Description	Qty. Req'd.
1	1-414388	Shield, belt w/decals.....	1	40	1-413113	Bushing, Idler.....	2
	1-413303-01	Shield, belt	1	41	3296-29	Nut, Nyloc 5/16-18.....	2
2	1-323385	Knob, belt shield.....	5	42	32128-20	Nut, Whizlock 5/16-18	6
3	1-323417	Washer, belt cover	5	43	322-5	Screw, Hex Cap 5/16-18 x 1	2
4	1-414311	Support wld w/bushings & decals..	1	44	1-603001	Rod, Deck Support.....	2
	1-412317-01	Support weldmt	1	45	1-806332	Rollpin, 1/4x1 1/2.....	2
5	1-413425	Spacer, Front Deck Support.....	2	46	322-2	Screw, Hex Cap 5/16-18 x 5/8	6
6	1-513336	Bushing, deck support.....	2	47	1-414385	Deck weldmt w/decals, discharge Baffle & support rods	1
7	1-611216	Kit, Link Assembly.....	2		1-412313-01	Deck weldmt.....	1
8	1-323539	Spacer.....	2	48	1-602913-01	Baffle, discharge	1
9	1-413525	Link, Deck Support.....	2	49	1-613204	Ball Joint.....	2
10	323-7	Screw, Hex Cap 3/8-16x1 ¼.....	26	50	323-13	Screw, Hex Cap 3/8-16 x 2 3/4 ...	2
11	3219-3	Nut, Reg Hex 3/8-24	2	51	1-800805	Screw, Hex Cap 3/8-16 x 3 ½ G8	1
12	32120-33	Ring, Retaining	2	52	1-633482	Blade, 18.00 notched air foil.....	3
13	1-806009	Hairpin, Cotter .177 #206	4		1-613251	Blade, 18.00 solid air foil	3
14	302-52	Zerk, Straight 1/8.....	2		1-633484	Blade, 18.00 mulching	3
15	323-6	Screw, Hex Cap 3/8-16x1	2		1-633485	Blade, 18.00 low lift (optional)	3
16	3253-5	Washer, 3/8 heavy spring	2		103-1578	Blade, 18.00 bahia.....	3
17	1-373034	Washer, Swivel.	8	53	1-513208	Washer, Spring disc	6
18	1-303514	Bearing, Flange.....	4	54	103-1026	Screw, Hex Cap 5/8-11 x 1 G8....	3
19	3217-9	Nut, Reg Hex ½-13	2	55	1-603299	Roller, antiscalp.....	6
20	3253-7	Washer, Lock Hlcl Spg ½ Reg ...	2	56	1-603602	Bushing, roller.....	6
21	1-522143-01	Caster weldment.....	2	57	98-5961	Screw, Hex Cap 3/8-16x4 Gr. 8 ..	6
22	325-20	Screw, Hex Cap ½-13x6	2	58	1-603050	Bushing Spacer	2
23	3290-357	Nut, Whizlock 3/8-16	18	59	3219-6	Nut, Reg hex 5/8-18	3
24	98-5975	Washer, Disc Spring 3/8	17	60	1-413424	Sheave w/Hub	3
25	103-1224	Tire & Wheel Asm (semi-pneumatic)..	2	61	323-9	Screw, hex Cap 3/8-16x1 3/4	2
	1-513809	Roller Bearing	2	62	1-513016	Bearing	6
❖	103-2170	Bushing (semi-pneumatic).....	4	63◆	1-414521	Link, Assembly	2
26■	103-2169	Spacer (semi-pneumatic).....	2	64	1-323532	Housing, Spindle	3
27	1-602571-01	Chute weldment, discharge	1	65	1-323528	Spacer, Bearing.....	3
28	1-413308	Belt, deck drive.....	1	66	1-633573	Guard, Bearing-Bottom	3
29	1-633151	Spring, extension	1	67	32120-8	Ring, Snap.....	3
30	3296-39	Nut, Nyloc 3/8-16.....	27	68	1-807268	Key, machine.....	3
31	3256-4	Washer, Flat Std 3/8	9	69	1-413330	Shaft, Spindle	3
32	1-513034	Pivot Bearing	2	70	1-414335	Housing, Cutter Assembly.....	3
33	302-40	Zerk, 90 degree ¼-28.....	1	71	1-413305-01	Shield, Belt	2
34	3234-11	Bolt, Hex Whizlock 3/8-16x1	1	72	1-323533	Spacer	3
35	3256-24	Washer, Flat 3/8 SAE	3	73	1-634619	Housing w/brgs, spacer & ring	3
36	1-413099	Pulley, Idler.....	1	74	103-1322	Assembly, cutting deck complete	1
37	1-412394-03	Arm, weldment.....	1	75	103-1330	Guard,bearing top	3
	1-414398	Arm, weldment w/bushings	1	76	302-61	Zerk, 45 degree ¼-28.....	2
38	1-603384	Bushing, Idler Pivot	1	77□	103-2171	Kit,semi-pneumatic wheel replacement...	1
39	1-613098	Pulley, Idler	2				

- Requires installation of Micro-Mulch accessory for proper mulching. Mulch kit P/N MK523(52")
Exmark red touch up spray paint - P/N 1-850337
- ◆ Link assembly must be assembled to 6.89" (or approximately 6 7/8") length between center of ball joint and center of furthest hole. See diagram on next page.
- ❖ Bushing for semi-pneumatic caster tires can be identified by a groove on the face.
- Front caster spacer for semi-pneumatic caster tires can be identified by yellow zinc plating.
- Kit 103-2171 used to install semi-pneumatic casters on machines originally fitted with pneumatic casters. Includes 103-1224 & 103-2169. Order 2 per machine.

52" MOWER DECK

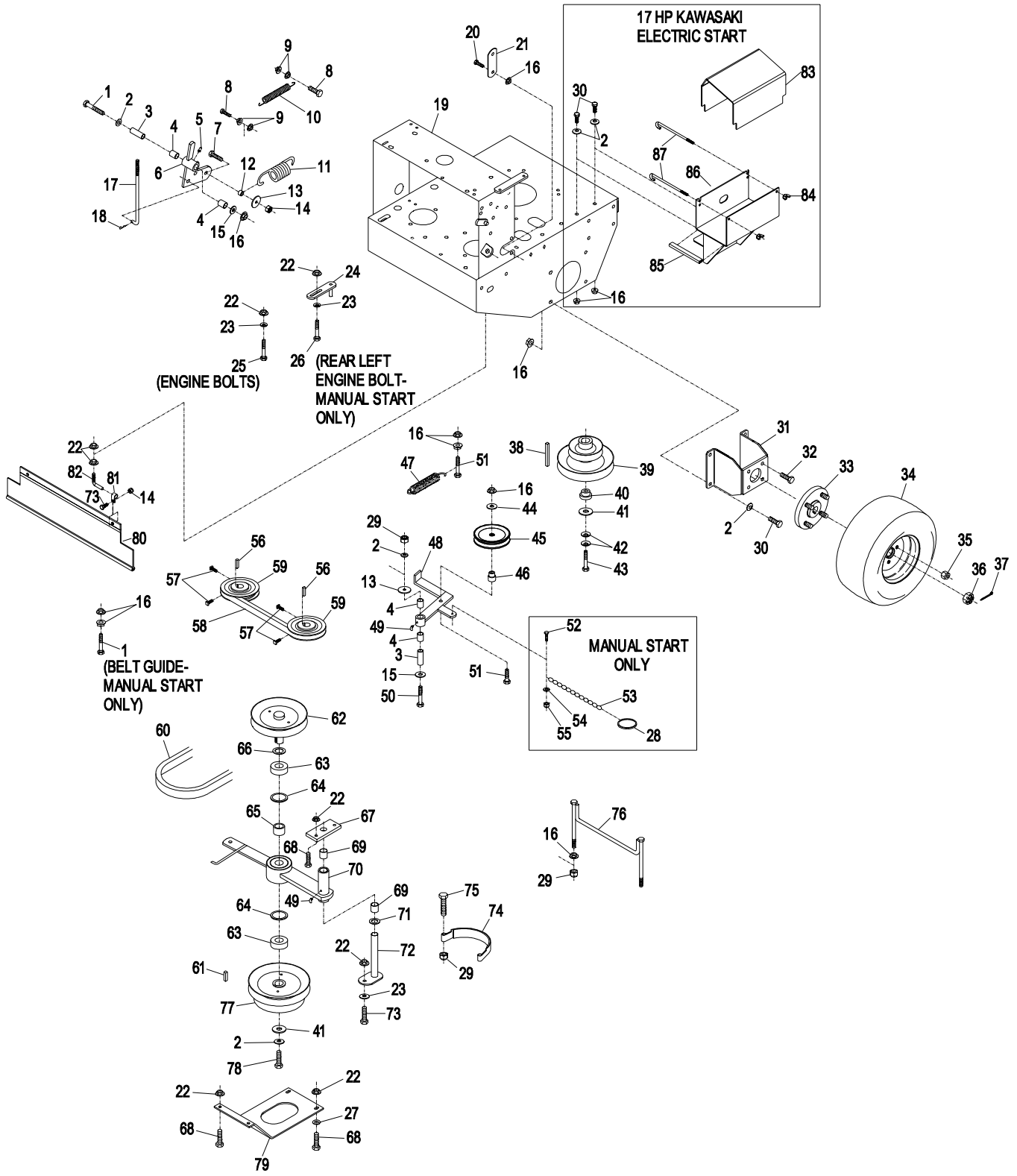


ENGINE DECK GROUP

Ref. No.	Part No.	Description	Qty. Req'd.	Ref. No.	Part No.	Description	Qty. Req'd.
1 ★	323-11	Screw, 3/8-16 x 2-1/4	2	41	1-373034	Washer, pivot.....	2
●	323-11	Screw, 3/8-16 x 2-1/4	1	42	1-603610	Washer.....	2
2 ★	98-5975	Washer, 3/8 disc spring.....	11	43▽	3212-10	Screw, 7/16-20x2-1/2	1
●	98-5975	Washer, 3/8 disc spring.....	13	44	3256-24	Washer, 3/8 SAE flat	1
3	1-603044	Bushing	2	45	1-603843	Pulley, idler.....	1
4	1-513034	Bearing, pivot	4	46	1-603496	Bushing - Idler	1
5	302-19	Zerk, straight	1	47	1-603402	Spring, extension	1
6	1-412285-03	Bellcrank weldment	1	48	1-412136-03	Idler arm weldmt	1
	1-414143	Bellcrank weldment w/brgs.....	1		1-414141	Idler arm weldmt w/brgs	1
7	322-6	Screw, 5/16-18 x 1-1/4	1	49	1481	Zerk, 45 degree.....	2
8	321-6	Screw, 1/4-20 x 1.....	2	50	323-13	Screw, 3/8-16 x 2-3/4	1
9	32128-33	Nut, 1/4-20 whizlock	4	51	323-9	Screw, 3/8-16 x 1-3/4	2
10	1-523498	Spring, motion control	1	52★	1-809069	Screw, #10-24 x 7/8	1
11	1-513113	Spring, belt tension.....	1	53★	1-323365	Chain, cold start	1
12	1-543007	Spacer.....	1	54★	3256-14	Washer, 7/32 std flat.....	1
13	1-213069	Washer.....	2	55★	3296-2	Nut, #10-24 nylock	1
14	3296-29	Nut, 5/16-18 nylock	3	56	1-807272	Key, 5mm sq x 25mm.....	2
15	3256-4	Washer, 3/8 std flat	2	57▽	1-803050	Setscrew, sq hd cuppoint.....	4
16	3290-357	Nut, 3/8-16 whizlock	18	58	1-413095	Belt, pump drive	1
17	1-413282	Linkage.....	1	59◇	1-413010	Sheave, pump drive	2
18	1-806003	Hairpin cotter.....	1	60	1-413096	Belt, blade clutch.....	1
19	1-412515-01	Deck weldmt, engine.....	1	61	1-807259	Key, 1/4 sq x 1.....	1
20	323-4	Screw, 3/8-16 x 3/4.....	2	62◇	1-412011	Sheave w/shaft.....	1
21	1-633068	Arm.....	1	63◇	1-413111	Bearing, clutch	2
22	32128-20	Nut, 5/16-18 whizlock	15	64	32120-8	Ring, retaining.....	2
23	1-303334	Washer, 5/16 disc spring.....	5	65	1-413012	Spacer, bearing.....	1
24 ★	1-322110	Guide weldmt, belt	1	66	1-523157	Washer, spacer.....	1
25 ★	322-7	Screw, 5/16-18x1-1/2	3	67	1-413049-01	Plate, clutch pivot.....	1
●	322-7	Screw, 5/16-18x1-1/2	4	68	322-5	Screw, 5/16-18 x 1	6
26 ★	322-9	Screw, 5/16-18x1-3/4	1	69	1-413207	Pivot, bearing	2
27	3256-3	Washer, 5/16 std flat.....	2	70	1-412417-03	Arm weldmt, clutch.....	1
28 ★	1-323366	Ring, split.....	1		1-414418	Arm weldmt, clutch w/brgs	1
29	3296-39	Nut, 3/8-16 nylock	5	71	1-413235	Washer, spacer.....	1
30★	323-6	Screw, 3/8-16 x 1.....	8	72	1-412138-03	Pin weldmt, pivot.....	1
●	323-6	Screw, 3/8-16 x 1.....	10	73	322-3	Screw, 5/16-18 x 3/4	3
31	1-412080-01	Mount, wheel motor 36".....	2	74	1-413062	Band, brake	1
	1-412082-01	Mount, wheel motor 48" & 52"	2	75	323-8	Screw, 3/8-16 x 1 1/2	2
32	3234-12	Screw, 3/8-16 x 3/4 whizlock	8	76	1-412325	Guide weldmt, belt	1
33	1-602997	Hub, four bolt w/studs.....	2	77◇	1-412031	Sheave w/drum (36" & 52").....	1
	1-633926	Stud	8		1-412028	Sheave w/drum (48").....	1
34	1-413473	Wheel & tire assy (36").....	2	78▽	1-800521	Screw, 3/8-24 x 1	1
	1-413474	Tire 16 x 6.50-8 (36").....	2	79	1-413009-01	Plate, guard.....	1
	1-613263	Wheel & tire assy (48" & 52")	2	80	103-2056	Shield, trailing.....	1
	1-613264	Tire 16 x 7.50-8 (48" & 52")	2	81	1-413510	Clip, loom - .50	2
	1-603715	Wheel	2	82	1-413511	Hanger, drag shield.....	2
35	242-50	Nut, wheel 1/2-20	8	83●	1-543891	Battery, cover	1
36	32136-5	Nut, slotted 3/4-16.....	2	84●	1-543792	Wingnut, 1/4-20 nyloc	2
37	1-806800	Pin, cotter 9/64 x 1-1/2	2	85●	1-413541	Trim-lok	1
38	1-807264	Key, 1/4sq x 2-5/8.....	1	86●	103-1098	Stand w/ trim-lok	1
39	1-413004	Sheave assy, drive.....	1	87●	1-543882	Bolt, hold down.....	2
40	1-603609	Bushing.....	1				

- ▽ Use Pro-Lock (nut type, Part no. 1-840022, 5 ml tube): ◇ Apply antiseize to:
- on setscrew threads.
 - on sheave retaining bolt in engine crankshaft.
 - on sheave retaining bolt on clutch arm.
 - between engine w/crankshaft and bearing and blade drive sheave.
 - between sheave w/shaft and bearing bores and sheave w/drum.
 - between pump shafts and sheaves.
- Exmark red touch up spray paint - P/N 1-850337 ★ Manual start only
- Electric start only

ENGINE DECK GROUP

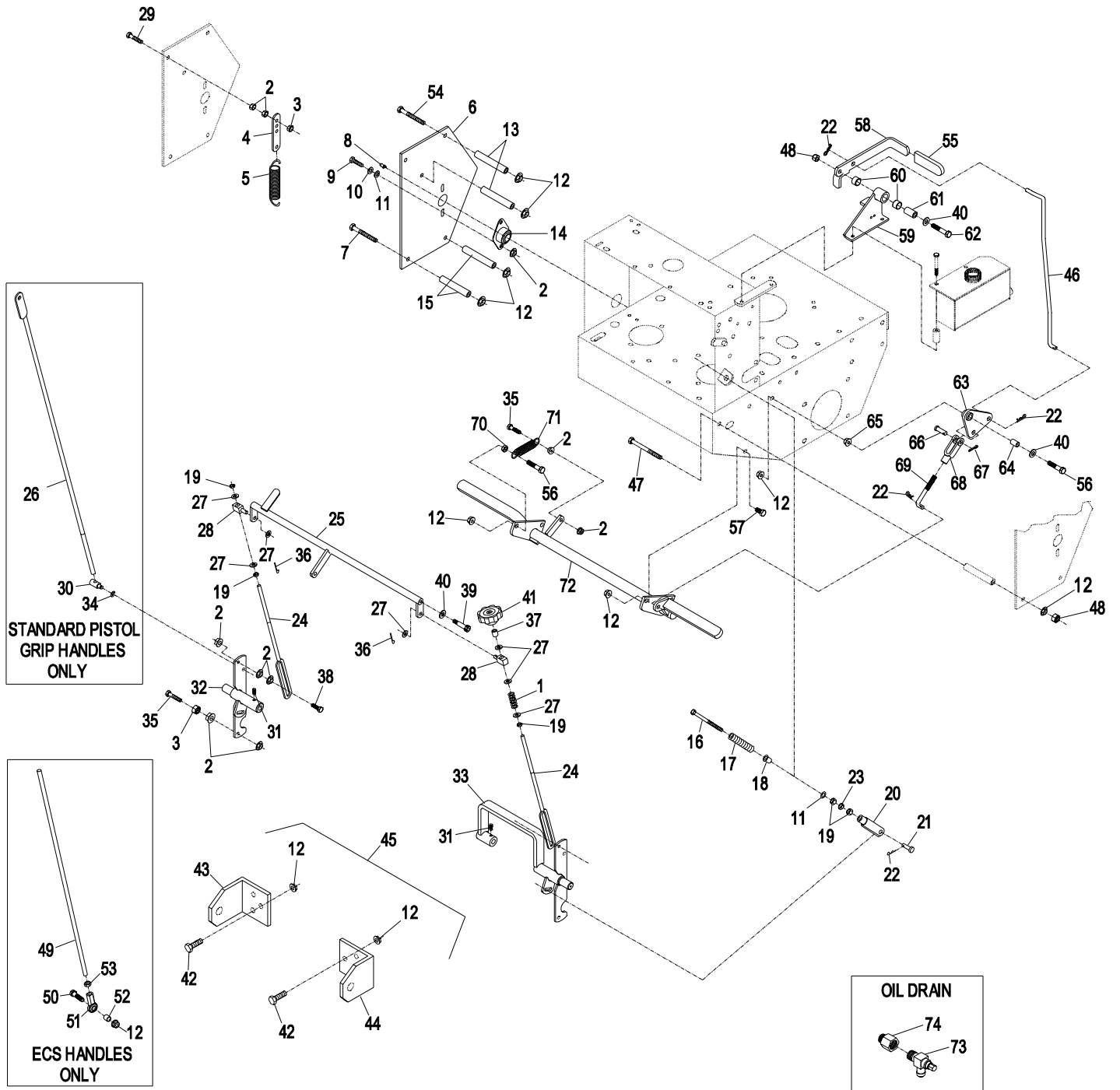


ENGINE DECK GROUP (con't.)

Ref. No.	Part No.	Description	Qty. Req'd.	Ref. No.	Part No.	Description	Qty. Req'd.
1	1-323245	Spring	1	40	3256-24	Washer, 3/8 SAE flat	4
2	32128-20	Nut, 5/16-18 whizlock	20	41	1-413151	Knob	1
3	3296-29	Nut, 5/16-18 nylock	4	42	323-6	Screw, 3/8-16 x 1	6
4	1-613089	Tab, spring extension	2	43	1-413252-01	Bracket, sulky LH	1
5	1-603693	Spring, extension	2	44	1-413254-01	Bracket, sulky RH	1
6	1-413201-01	Shield, hydro	2	45	1-411255	Sulky kit	1
7	323-16	Screw, 3/8-16 x 4	6	46	1-413492	Linkage, upper brake	1
8	302-19	Zerk, 1/4-28	2	47 ●	323-23	Screw, 3/8-16 x 4 1/2	1
9	322-3	Screw, 5/16-18 x 3/4	4	◇	323-16	Screw, 3/8-16 x 4	1
10	1-805005	Washer, 5/16 hvy spr lock .	4	48 ●	3296-39	Nut, 3/8-16 nylock	2
11	3256-2	Washer, 1/4 std flat	6	◇	3296-39	Nut, 3/8-16 nylock	1
12▽	3290-357	Nut, 3/8-16 whizlock	19	49◇	103-1148	Rod, drive lever	2
◇	3290-357	Nut, 3/8-16 whizlock	21	50◇	323-8	Screw, 3/8-16 x 1 1/2	2
13	1-323195-01	Spacer, shield	4	51◇	103-1167	Joint, .375 LH ball end	2
14	1-633102	Bearing, side flange	2	52◇	103-1166	Tube, pump link spacer	2
15	1-323197-01	Spacer, shield	4	53◇	3220-16	Nut, jam 3/8-24 LH	2
16	1-603737	Bolt, neutral return	2	54●	323-16	Screw, 3/8-16x4	1
17▽	1-603807	Spring, neutral return	2	◇	323-23	Screw, 3/8-16x4 1/2	1
◇	103-0265	Spring, neutral return	2	55	1-303020	Grip, lever	1
18	1-603735	Bushing, nylon	2	56	323-9	Screw, HH 3/8-16 x 1 3/4	2
19	3219-2	Nut, 5/16-24 hex	7	57	323-4	Screw, HH 3/8-16 x 3/4	3
20	1-303105	Yoke	2	58	1-412501-03	Park brake lever weldmt ...	1
21	1-808280	Clevis pin, 5/16 x 1	2	59	1-414504	Weldmt, bracket w/bushings	1
22	1-806003	Hairpin cotter	5	60	1-413347	Sleeve, bushing	2
23	3220-2	Nut, 5/16-24 jam	2	61	1-413344	Bushing, pivot	1
24	1-413350	Rod, control	2	62	323-10	Screw, HH 3/8-16 x 2	1
25	1-412203	Crank weldmt	1	63	1-414508	Bellcrank, w/ bushings	1
26▽	1-413219	Rod, drive lever	2	64	1-303548	Bushing, plastic	1
27	3256-23	Washer, 5/16 SAE	7	65	32128-21	Nut, hex flange lock 3/8-16	1
28	1-603676	Swivel, short	2	66	1-808285	Pin, clevis 3/8 x 1 1/8	1
29	1-800016	Tap Bolt 5/16-18 x 1-1/4	2	67	3272-10	Pin, cotter 1/8 x 3/4	1
30▽	103-1235	Swivel, drive lever	2	68	1-633131	Yoke, brake linkage	1
31◆	1-803022	Setscrew, 5/16-18x5/8	2	69	1-413489	Linkage, lower brake	1
32	103-1190-01	Arm weldmt, LH	1	70	3218-3	Nut, jam 3/8-16	1
33	103-1191-01	Arm weldmt, RH	1	71	1-323161	Spring	1
34▽	32151-47	Klipring .375 shaft	2	72	103-2085-03	Brake weldmt, 36"	1
35	322-6	Screw, 5/16-18 x 1-1/4	3		103-2004-03	Brake weldmt, 48/52"	1
36	3272-5	Cotter pin, 3/32 x 1/2	2	73	103-1965	Valve, oil drain	1
37	1-603903	Spacer	1	74	103-1966	Adapter, M20-2.5/ 3/8 NPT	1
38	1-403180	Screw, HH 5/16-18x1 3/8...	2				
39◆	1-809056	Bolt, .375x.375 hx skt hd ...	2				

- ◆ Use Pro-Lock nut type, Part No. 1-840022 (.5 ml tube) on shoulder bolt & setscrew threads.
Exmark red touch up spray paint - PN 1-850337
- ◇ Electric start only
- Manual start only
- ◇ Models with ECS handles only
- ▽ Models with Standard pistol grip handles only

ENGINE DECK GROUP (con't.)



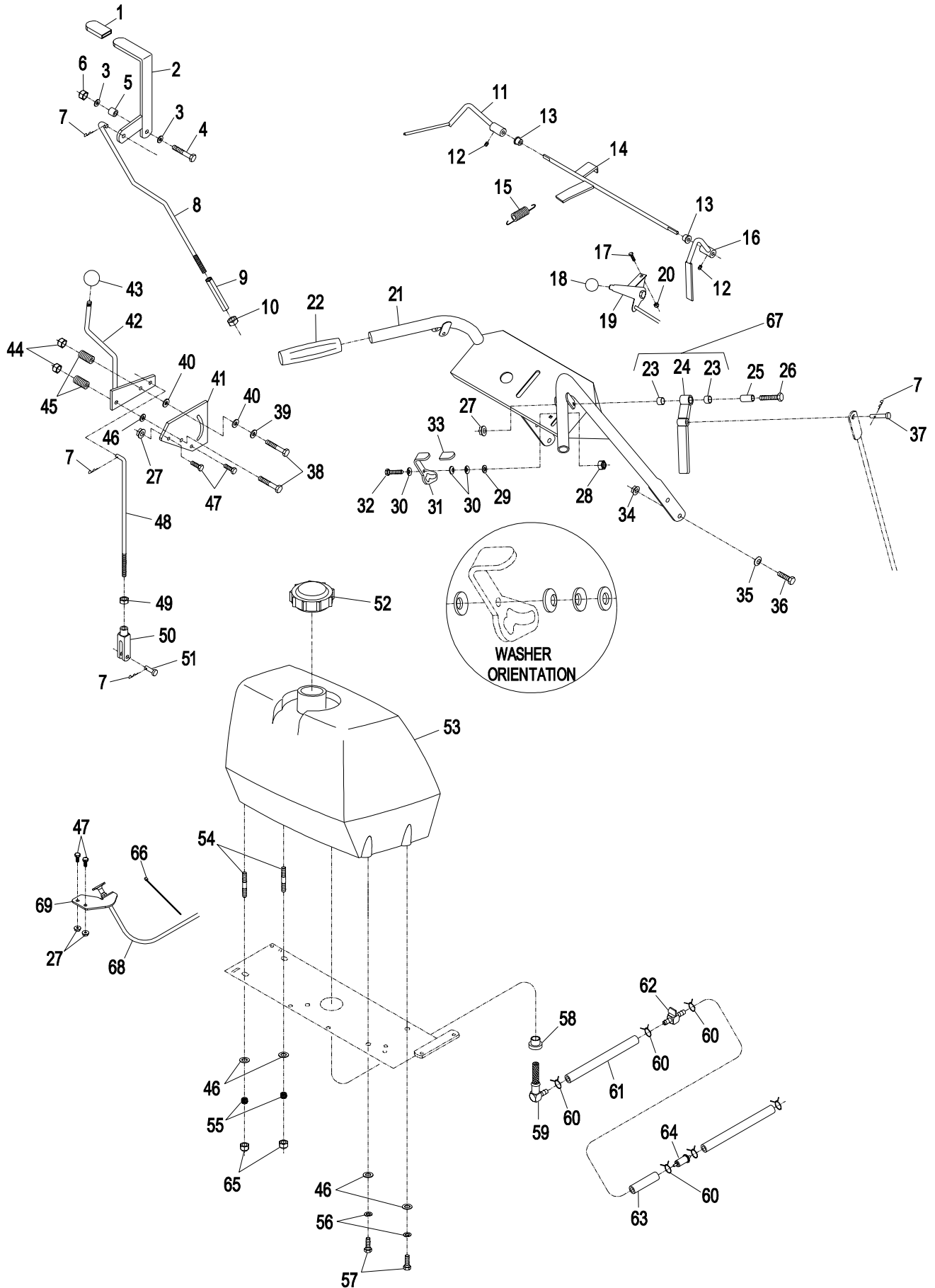
STANDARD PISTOL GRIP UPPER HANDLES and CONTROLS

Ref. No.	Part No.	Description	Qty. Req'd.	Ref. No.	Part No.	Description	Qty. Req'd.
1	1-303020	Grip	1	35	98-5975	Washer, 3/8 disc spring	4
2	1-414234	Asm, Lever/grip(1-412295)..	1	36	323-6	Screw, 3/8-16 x 1	4
3	3256-24	Washer, 3/8 SAE flat.....	2	37	1-613055	Pin, clevis.....	2
4	323-9	Screw, 3/8-16 x 1-3/4	1	38	322-10	Screw, 5/16-18 x 2	2
5	1-413088	Spacer	1	39	1-603716	Washer, friction disc	1
6	3296-39	Nut, 3/8-16 nylock	1	40	1-323244	Washer, friction.....	2
7	1-806003	Hairpin cotter.....	5	41	1-603730	Plate, shifter lever	1
8	1-413293	Rod, blade engagement.....	1	42	1-602733	Lever weldmt, shift.....	1
9	1-413279	Turnbuckle	1	43♦	1-603175	Knob.....	1
10	3217-7	Nut, 3/8-16 hex.....	1	44	3296-29	Nut, 5/16-18 nylock	2
11∇	1-412183-03	Lever weldmt opc LH	1	45	1-323245	Spring, compression	2
12♦	1-803322	Setscrew, 5/16-24 x 5/16 ...	2	46	3256-23	Washer 5/16 SAE flat	5
13	1-303365	Bushing, nylon.....	2	47	321-3	Screw, 1/4-20 x 5/8.....	4
14	1-322192-03	Rod weldmt, opc	1	48	1-413225	Rod, speed control.....	1
15	1-303363	Spring, actuator	1	49	3220-2	Nut, 5/16-24 jam	1
16∇	1-412185-03	Lever weldmt, opc RH.....	1	50	1-303105	Yoke.....	1
17	1-807513	Bolt, #10-24 x 1/2 carriage. 2		51	1-808280	Clevis pin 5/16 x 1.....	1
18	1-513592	Knob, red throttle.....	1	52	1-513508	Cap, fuel.....	1
19	1-633696	Cable, throttle.....	1	53	1-413179	Tank, fuel.....	1
20	3296-2	Nut, #10-24 nylock	2	54∇	1-633023	Stud, fuel tank.....	2
21	103-2456	Handle wld,upper w/ decals	1	55	1-633349	Spring, fuel tank	2
	1-412448-03	Handle wld,upper	1	56	1-805005	Washer, 5/16 hvy lock	2
22	1-303097	Grip, handle.....	2	57	322-3	Screw, 5/16-18 x 3/4	2
23	1-413152	Bearing	4	58	1-513645	Bushing, fuel valve	1
24	1-412159-03	Lever, drive LH.....	1	59	1-543277	Elbow, fuel tank.....	1
	1-412161-03	Lever, drive RH (shown)	1	60	1-303077	Clamp, fuel line	4
25	1-603749	Bushing, drive lever.....	2	61	1-603955	Hose, fuel line 6"	1
26	321-9	Screw, 1/4-20 x 1-1/2	2	62	1-603770	Valve, fuel	1
27	32128-33	Nut, 1/4-20 whizlock	6	63	1-303022	Hose, fuel line 8.5".....	1
28	3296-42	Nut, 1/4-20 Nylock.....	2	64	Kawasaki PN 41019-1055 filter w/6" fuel line...1		
29	3256-2	Washer 1/4 std flat.....	2	65	3296-47	Nut, nyloc thin 5/16-18	2
30	1-303435	Washer, 1/4 disc spring	6	66	1-303287	Tie, plastic	1
31	1-612168	Thumb latch w/gripRH _(shown)	1	67	103-0219	Asm, Drive Lever RH	1
	1-612167	Thumb latch w/grip LH	1		103-0218	Asm, Drive Lever LH	1
32	321-10	Screw, 1/4-20 x 1-3/4	2	68	103-1796	Cable, choke	1
33	1-303019	Grip, latch.....	2	69	103-1797-01	Bracket, choke cable	1
34	3290-357	Nut, 3/8-16 whizlock	4				

♦ Use Pro-Lock nut type, Part no. 1-840022 (.5cc tube) on setscrew threads and on shifter knob threads.

∇ Use Pro-Lock retaining type, Part no. 1-840023 (.5cc tube) on inside of bore of OPC hub and on fuel tank studs.
Exmark black touch up spray paint - Gloss black

STANDARD PISTOL GRIP UPPER HANDLES and CONTROLS

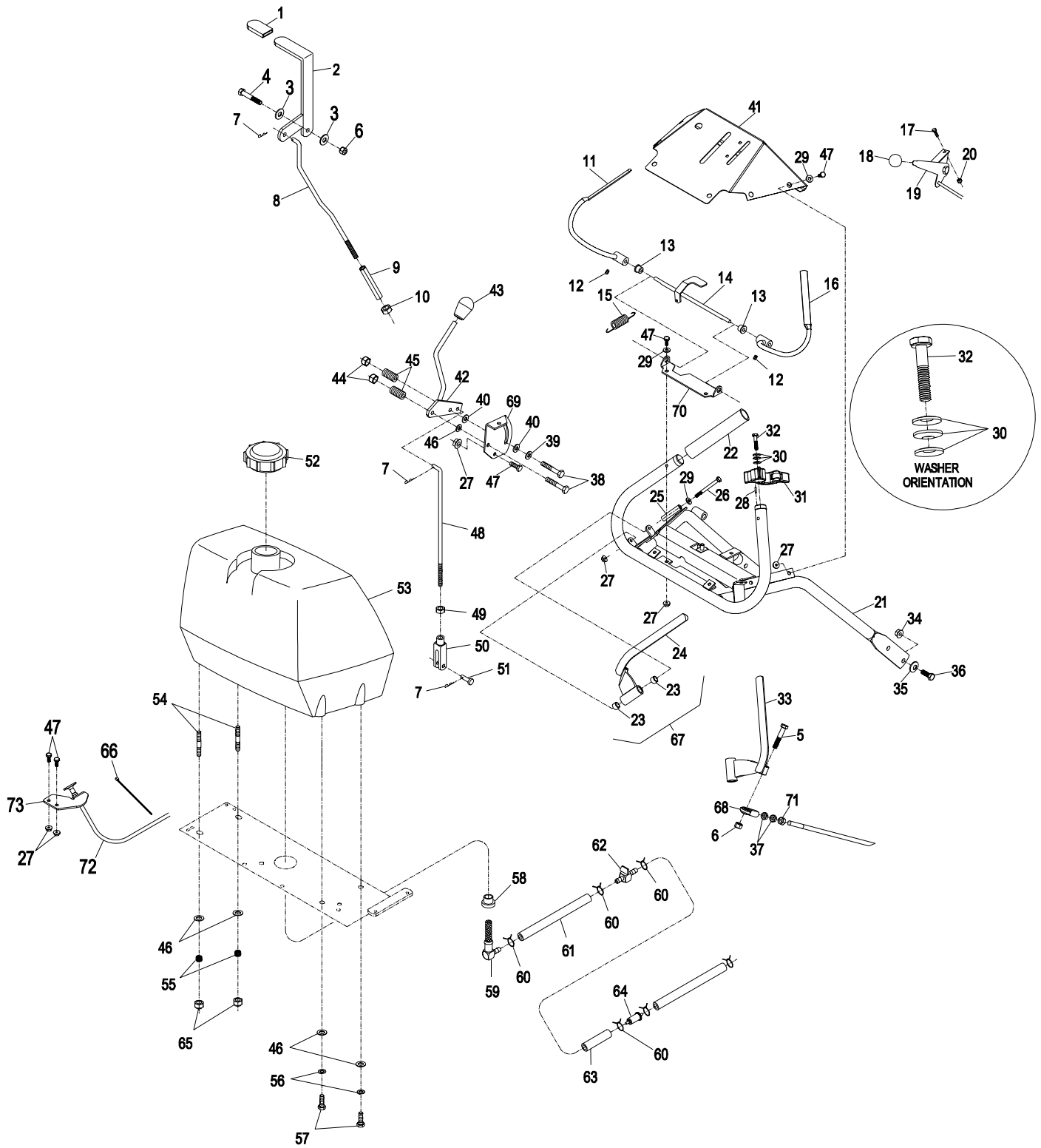


ECS UPPER HANDLES and CONTROLS

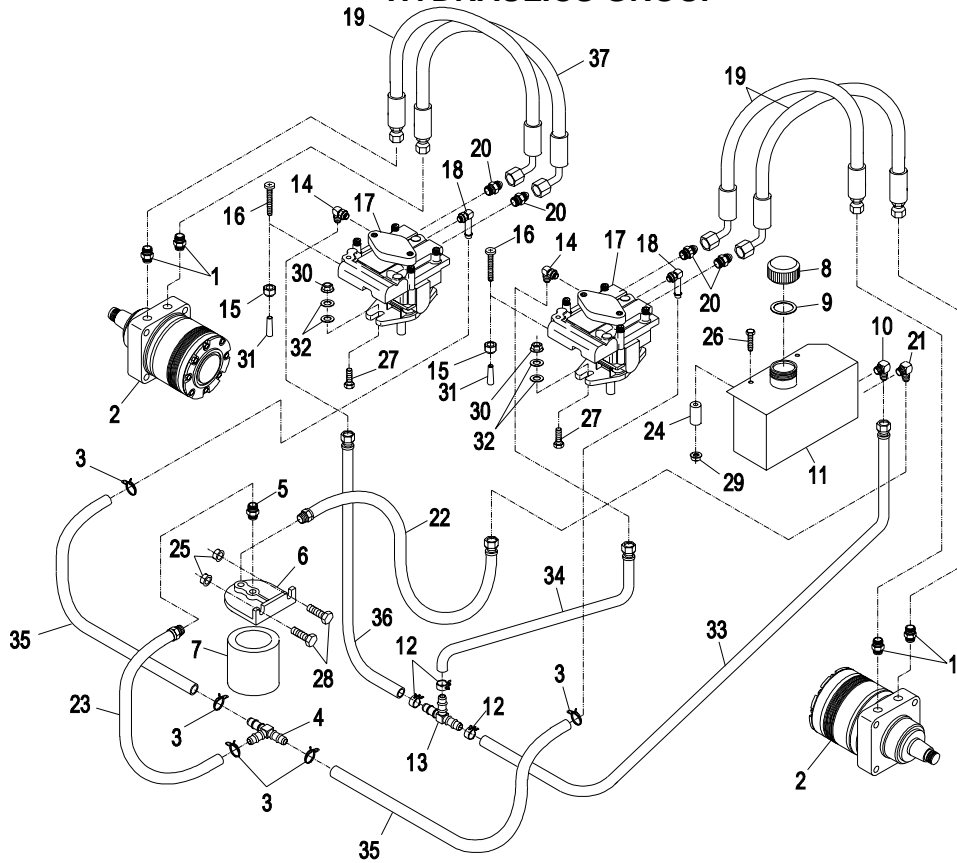
Ref. No.	Part No.	Description	Qty. Req'd.	Ref. No.	Part No.	Description	Qty. Req'd.
1	1-303020	Grip.....	1	39	1-603716	Washer, friction disc	1
2	1-414234	Asm, Lever/grip(1-412295)..	1	40	1-323244	Washer, friction.....	2
3	3256-24	Washer, 3/8 SAE flat.....	2	41	103-0546-03	Wld,upper handle console .	1
4	323-11	Screw, 3/8-16 x 2-1/4	1	●	103-2457	Console w/ decals.....	1
5	323-10	Screw,3/8-16 x 2.....	2	□	103-2458	Console w/ decals.....	1
6	3296-39	Nut, 3/8-16 nylock.....	3	42	103-0773	Speed shift weldmt	1
7	1-806003	Hairpin cotter	3	43	103-0423	Knob .38-16 nyloc	1
8	103-1149	Link, blade engagement	1	44	3296-29	Nut, 5/16-18 nyloc.....	2
9	1-413279	Turnbuckle.....	1	45	1-323245	Spring, compression	2
10	3217-7	Nut, 3/8-16 hex	1	46	3256-23	Washer 5/16 SAE flat	5
11∇	103-1566-03	Lever weldmt opc LH.....	1	47●	321-3	Screw, 1/4-20 x 5/8.....	10
12◆	1-803322	Setscrew, 5/16-24 x 5/16...	2	□	321-3	Screw, 1/4-20 x 5/8.....	12
13	1-303365	Bushing, nylon	2	48	1-413225	Rod, speed control.....	1
14	103-0769-03	Lever axle weldmt, opc.....	1	49	3220-2	Nut, 5/16-24 jam	1
15	1-303363	Spring, opc extension	1	50	1-303105	Yoke.....	1
16∇	103-1567-03	Lever weldmt, opc RH	1	51	1-808280	Clevis pin 5/16 x 1.....	1
17	1-807513	Bolt, #10-24 x 1/2 carriage	2	52	1-513508	Cap, fuel.....	1
18	1-513592	Knob, red throttle	1	53	1-413179	Tank, fuel	1
19	1-633696	Cable, throttle	1	54∇	1-633023	Stud, fuel tank.....	2
20	3296-2	Nut, #10-24 nylock.....	2	55	1-633349	Spring, fuel tank.....	2
21	103-0770-03	Handle wld, upper ecs	1	56	1-805005	Washer, 5/16 hvy lock	2
22	103-0815	Grip, handle bar.....	2	57	322-3	Screw, 5/16-18 x 3/4	2
23	1-413152	Bearing	4	58	1-513645	Bushing, fuel valve	1
24	103-0771-03	Lever, drive LH	1	59	1-543277	Elbow, fuel tank.....	1
25	103-0027	Bushing, drive lever	2	60	1-303077	Clamp, fuel line	4
26	321-14	Screw,1/4-20 x 2 3/4.....	2	61	1-603955	Hose, fuel line 6"	1
27●	32128-33	Nut, 1/4-20 whizlock	12	62	1-603770	Valve, fuel	1
□	32128-33	Nut, 1/4-20 whizlock	14	63	1-303022	Hose, fuel line 8.5"	1
28	103-0464	Pin,1/8 x 1/2 spring.....	2	64	Kawasaki PN 41019-1055	filter w/6" fuel line...1	
29	3256-22	Washer 1/4 SAE flat.....	10	65	3296-47	Nut, nyloc thin 5/16-18	2
30	1-303435	Washer, 1/4 disc spring.....	6	66	1-303287	Tie, plastic	1
31	103-1371	Thumb latch asm RH(shown)	1	67	103-1915	Asm, Drive Lever RH	1
	103-1372	Thumb latch asm LH	1		103-1916	Asm, Drive Lever LH	1
32	103-0235	Screw, 1/4-20 x 1-1/8 w/nylon	2	68	103-0608	Joint,.375 ball end.....	2
33	103-0772-03	Lever,drive RH.....	1	69	103-0503	Bracket,shifter slide	1
34	3290-357	Nut, 3/8-16 whizlock	4	70	103-0489-03	Bracket,opc axle	1
35	98-5975	Washer, 3/8 disc spring.....	4	71	3219-3	Nut,reg hex 3/8-24	2
36	323-6	Screw, 3/8-16 x 1.....	4	72	103-1796	Cable, choke	1
37	3220-3	Nut, jam 3/8-24.....	4	73	103-1797-03	Bracket, choke cable	1
38	322-10	Screw, 5/16-18 x 2.....	2				

- ◆ Use Pro-Lock nut type, Part no. 1-840022 (.5cc tube) on setscrew threads and on shifter knob threads.
- ∇ Use Pro-Lock retaining type, Part no. 1-840023 (.5cc tube) on inside of bore of OPC hub and on fuel tank studs.
Exmark black touch up spray paint - Gloss black
- Electric start only
- Manual start only

ECS UPPER HANDLES and CONTROLS



HYDRAULICS GROUP



Ref. No.	Part No.	Description	Qty. Req'd.	Ref. No.	Part No.	Description	Qty. Req'd.
1	1-603991	Fitting, strght connector	4	18	1-603989	Elbow, 90°	2
	1-603919	Boss O-Ring	1		1-603923	O-Ring	1
	1-603992	Flare O-Ring	1	19	1-613034	Hose, high pressure	3
2	1-603718	Wheel motor	2	20	1-603990	Adapter, straight thread	4
	1-000138	Kit, Bearing	1		1-603920	Boss O-Ring	1
	1-000119	Kit, seal	1		1-603992	Flare O-Ring	1
3	1-603827	Clamp, hose (5/8)	5	21	1-603988	Elbow, 90°	1
4	1-603721	Fitting, Hose Tee (3/8 I.D.)	1	22	1-602985	Hose, supply	1
5	1-513510	Connector, male	1	23	1-602754	Hose, charge line	1
6*	1-603720	Head, filter	1	24	1-323218	Spacer, hydraulic tank	2
7	1-513211	Element, oil filter	1	25	32128-20	Nut, whizlock 5/16-18	2
∇	1-523541	Element, oil filter(winter)	1	26	321-18	Screw, 1/4-20 x 2 1/4	2
8	1-513167	Cap, hydraulic reservoir	1	27	323-7	Screw, 3/8-16 x 1-1/4	4
9	1-523103	Gasket, tank cap	1	28	322-5	Screw, 5/16-18 x 1	2
10	1-603987	Elbow, 90°	1	29	32128-33	Nut, whizlock 1/4-20	2
11*	1-512166-03	Reservoir, hydraulic fluid	1	30	3290-357	Nut, whizlock 3/8-16	4
12	1-603826	Hose Clamp 1/2	3	31	1-613073	Grip, dump valve	2
13	1-603722	Fitting - Hose Tee(1/4 I.D.)	1	32	3256-3	Washer, 5/16 std	8
14	1-513840	Elbow - 90°	2	33	1-602750	Hose, case drain	1
	1-603921	O-Ring	1	34	1-632286	Hose assy, lo pressure	1
15	3296-42	Nut, nylock 1/4-20	2	35	1-413273	Hose, lo pressure	2
16	1-801063	Screw, 1/4-20x2 pan head	2	36	1-632285	Hose assy, lo pressure	1
17	1-613042	Pump, hydro	2	37	1-323241	Hose, high pressure	1

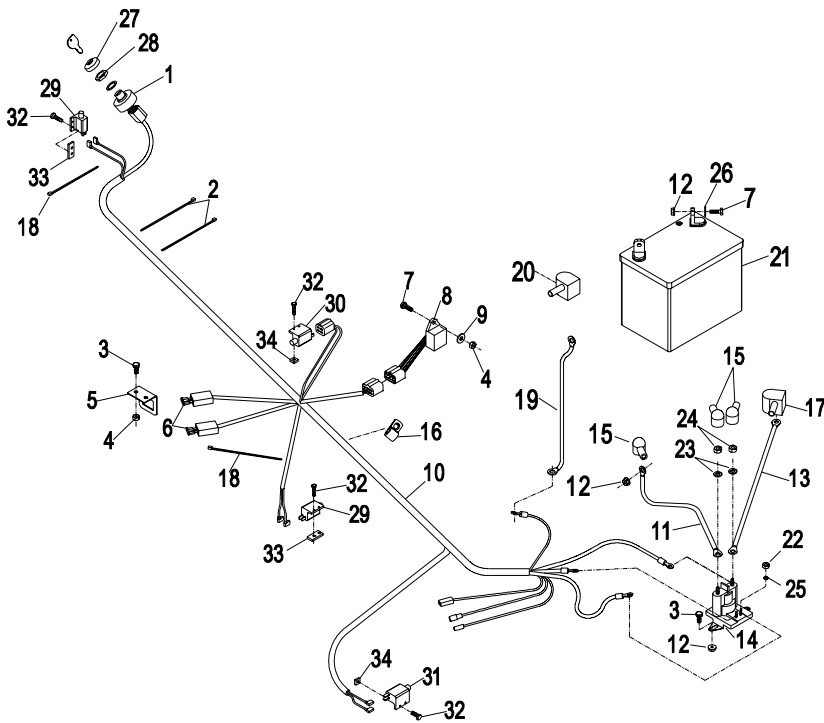
* Use Teflon Pipe Sealant or equivalent on hydraulic reservoir and filter head fittings.

∇ Use only for operation below 32°F(0°C)

Exmark black touch up spray paint - gloss black

ELECTRICAL GROUP

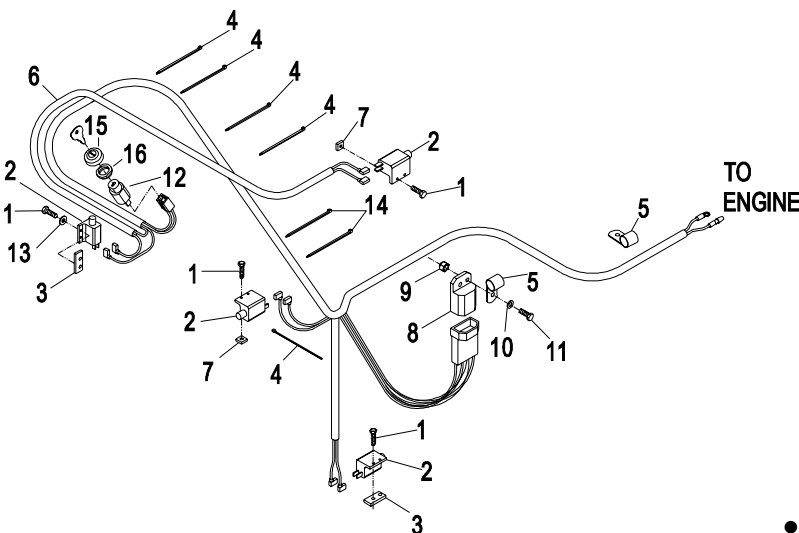
ELECTRIC START



Ref. No.	Part No.	Description	Qty. Req'd.
1	1-543070	Switch, ignition	1
	1-603511	Key, ignition.....	1
	103-2106	Key, Exmark logo	1
2	1-303335	Tie, plastic large	2
3	321-3	Screw, 1/4-20 x 5/8	2
4	3296-42	Nut, 1/4-20 nylock	3
5	1-323442-01	Bracket, fuse.....	1
6	1-816001	Fuse, 20A.....	2
7	321-4	Screw, 1/4-20 x 3/4	5
8	1-613198	Module	1
9	3256-23	Washer, 5/16 sae flat	1
10●	103-2006	Harness, wiring.....	1
11	1-633306	Cable, Solenoid/Starter +	1
12	32128-33	Nut, 1/4-20 whizlock	5
13	1-603490	Cable, battery +.....	1
14	1-513075	Switch, 12V solenoid.....	1
15	1-543393	Insulator, solenoid +	3
16	1-603727	Clip, loom	1
17	1-543391	Insulator, battery +	1
18	1-303287	Tie, plastic small	2
19	1-413540	Battery cable	1
20	1-543390	Insulator, battery -	1
21	103-0293	Battery, 12V MNFLD	1
22	3219-14	Nut, hex #10-32 GR2,YZ.....	2
23	3253-4	Washer, lock .313	2
24	3220-2	Nut, jam 5/16 - 24.....	2
25	3253-17	Washer, lock .190	2
26	3256-2	Washer, 1/4 flat.....	2
27	103-0499	Seal, Ignition Switch	1
28	103-0498	Nut, Ignition Switch.....	1
29	1-513051	Switch, N.O.	2
30	1-633111	Switch N.O / N.C.	1
31	1-513152	Switch, N.C.	1
32	3290-500	Screw, #10-24 x 5/8.....	8
33	1-633181	Plate, tapped.....	2
34	1-804002	Nut, square #10-24.....	4

● Use dielectric grease on all electrical connectors.

MANUAL START



Ref. No.	Part No.	Description	Qty. Req'd.
1	3290-500	Screw, #10-24 x 5/8.....	8
2	1-513051	Switch, N.O.	4
3	1-633181	Plate, tapped.....	2
4	1-303287	Tie, plastic small	5
5	1-323229	Clip, loom	2
6●	103-2005	Harness, wiring	1
7	1-804002	Nut, square #10-24.....	4
8	1-323430	Module, interlock	1
9	3296-42	Nut, nyloc 1/4-20	1
10	3256-2	Washer, 1/4 std flat.....	1
11	321-4	Screw, 1/4-20 x 3/4	1
12	1-403121	Switch, on/off	1
	1-603511	Key, ignition.....	1
	103-2106	Key, Exmark logo	1
13	3256-14	Washer, flat #10	1
14	1-303335	Tie, plastic large	2
15	103-0499	Seal, Ignition Switch	1
16	103-0498	Nut, Ignition Switch.....	1

● Use dielectric grease on all electrical connectors.

DECALS

Ref. No.	Part No.	Description	Qty. Req'd.	Ref. No.	Part No.	Description	Qty. Req'd.
1●◇	103-1974	Decal, console	1	18	1-553049	Decal, mower deck	1
2	103-1798	Decal, throttle	1	19	1-323411	Decal, commercial 36	1
3◆	103-2242	Decal, ECS instruction LH.....	1	20	1-403131	Decal, commercial 48	1
4◆	103-2243	Decal, ECS instruction RH	1	21	1-403132	Decal, commercial 52	1
5	103-1077	Decal, bolt torque	1	22	1-403143	Decal, sulky warning	1
6	1-303508	Decal, discharge warning	1	23	1-413214	Decal, tracking	1
7▲◆	103-1976	Decal, ECS console	1	24	1-303520	Decal, trivantage	1
8	1-523552	Decal, hydraulic tank	1	25▲	1-513747	Decal, battery	1
9	103-2103	Decal, park brake	1	26	1-603845	Decal, hyd drive release	1
10	1-413342	Decal, swash	1	27	98-5954	Decal, missing cover (36).....	1
11	1-513746	Decal, muffler	2		98-5954	Decal, missing cover (48 & 52)	3
12	1-413421	Decal, indicator	1	28	1-413206	Decal, belt routing (36)	1
13●	1-303102	Decal, neutral lock.....	2	29	1-323540	Decal, roller mounting.....	1
14	103-1983	Decal, exmark logo	1	30	1-413327	Decal, belt routing (48 & 52) ..	1
15	1-303517	Decal, belt drive.....	1	31	1-403005	Decal, danger.....	2
16◇◆	103-1977	Decal, ECS console	1	●	103-2461	Decal kit (Standard)	
17	1-303293	Decal, 2 min cool.....	1	◆	103-2462	Decal kit (ECS)	

- Models with standard pistol grip handles only
- ◆ Models with ECS handles only
- ◇ Manual start models only
- ▲ Electric start models only

DECALS

1

DANGER

- Thrown objects or blades contact can cause serious injury or death.
- Keep all people and pets out of area when mowing.
- Avoid blades unless blades and engine are stopped.

CAUTION

- Hearing protection recommended.
- Do NOT park on slope unless park brake is engaged.

WARNING

- Read operator's manual before operating.
- Do NOT operate unless trained to safely operate this machine.
- Do NOT operate without shields, guards and safety devices in place and working.
- Do NOT carry passengers.
- Clear area of debris before mowing.
- Before leaving operator's position:
 - Lock drive levers in neutral lock position.
 - Shift speed control lever to neutral.
 - Engage park brake.
- Shut off engine and remove key before adjusting, servicing or cleaning.
- Use extreme caution when operating on slopes.
- Mow across slope - NOT up and down.
- Do NOT operate on slopes greater than 20°.
- Do NOT mow wet slopes.

PTD
ROTATE
STOP
OFF
ON

6
5
4
3
2
1
N

3

EGS
ENHANCED STEERING SYSTEM

4

EGS
ENHANCED STEERING SYSTEM

5

CAUTION

- LOOSE OR DAMAGED BLADE BOLT MAY ALLOW BLADE TO COME OUT FROM UNDER DECK AT HIGH SPEED.
- REPLACE BLADE BOLT AFTER STRIKING A FOREIGN OBJECT.
- TORQUE BLADE BOLT TO 115-120 FT/LBS(155-165 N)

SEE OPERATOR'S MANUAL.

6

WARNING

DO NOT OPERATE WITHOUT DISCHARGE DEFLECTOR OR ENTIRE GRASS COLLECTION SYSTEM IN PLACE. DO NOT REMOVE GRASS CATCHER UNTIL BLADES HAVE STOPPED.

7

DANGER

- Thrown objects or blades contact can cause serious injury or death.
- Keep all people and pets out of area when mowing.
- Avoid blades unless blades and engine are stopped.

CAUTION

- Hearing protection recommended.
- Do NOT park on slope unless park brake is engaged.

WARNING

- Read operator's manual before operating.
- Do NOT operate unless trained to safely operate this machine.
- Do NOT operate without shields, guards and safety devices in place and working.
- Do NOT carry passengers.
- Clear area of debris before mowing.
- Before leaving operator's position:
 - Lock drive levers in neutral lock position.
 - Disengage PTD.
 - Shift speed control lever to neutral.
 - Engage park brake.
- Shut off engine and remove key before adjusting, servicing or cleaning.
- Use extreme caution when operating on slopes.
- Do NOT operate on slopes greater than 20°.
- Mow across slope - NOT up and down.
- Do NOT mow wet slopes.

PTD
ROTATE
STOP
OFF
ON

6
5
4
3
2
1
N

8

HYDRAULIC OIL - USE ONLY MOBIL 1 SAE 10W-60 SYNTHETIC ENGINE OIL. FILL TO TOP OF BIFUL.

CAUTION

HOT SURFACE

9

ENGAGE
PARK BRAKE
RELEASE

10

TURF TRACER HP

14

exmark

15

WARNING

OPEN BELT DRIVE! STOP ENGINE BEFORE REACHING UNDERNEATH!

11

CAUTION

MUFFLER AND BILGE MAY EXCEED 180°F

12

TENSION INDICATOR

CHECK TENSION FOR THE FIRST USE. CHECK DAILY THEREAFTER. ALIGN BOLT WITH TENSION INDICATOR AS SHOWN.

13

NEUTRAL LOCK

16

DANGER

- Thrown objects or blades contact can cause serious injury or death.
- Keep all people and pets out of area when mowing.
- Avoid blades unless blades and engine are stopped.

CAUTION

- Hearing protection recommended.
- Do NOT park on slope unless park brake is engaged.

WARNING

- Read operator's manual before operating.
- Do NOT operate unless trained to safely operate this machine.
- Do NOT operate without shields, guards and safety devices in place and working.
- Do NOT carry passengers.
- Clear area of debris before mowing.
- Before leaving operator's position:
 - Lock drive levers in neutral lock position.
 - Disengage PTD.
 - Shift speed control lever to neutral.
 - Engage park brake.
- Shut off engine and remove key before adjusting, servicing or cleaning.
- Use extreme caution when operating on slopes.
- Do NOT operate on slopes greater than 20°.
- Mow across slope - NOT up and down.
- Do NOT mow wet slopes.

PTD
ROTATE
STOP
OFF
ON

6
5
4
3
2
1
N

17

CAUTION

ALLOW COOLING, FERS MULTIPLE BEFORE RESTART

18

WARNING

DISENGAGE BLADE CLUTCH, SHUT OFF ENGINE AND REMOVE KEY BEFORE MAKING ADJUSTMENTS, SERVICING OR CLEANING DECK

ANTI-SCALP ROLLER ADJUSTMENT

FOR NORMAL OPERATING CONDITIONS, PLACE ROLLERS IN POSITIONS SHOWN FOR 36" (91mm) GROUND CLEARANCE.

CUTTING HEIGHT (INCHES/MM)
2.00 (51)
2.25 (57)
2.50 (64)
2.75 (70)
3.00 (76)
3.25 (83)
3.50 (89)
3.75 (95)
4.00 (102)
4.25 (108)
4.50 (114)

FOR MAXIMUM FLEET PROBLEMS MAY BE POSITIONED LOWER, BUT MUST MAINTAIN A MINIMUM OF 1" (25.4mm) GROUND CLEARANCE. REFER POSITION THE ROLLERS TO SUPPORT MOWER DECK.

CUTTING HEIGHT ADJUSTMENT

DECK SUPPORT PIN

19

COMMERCIAL 36

20

COMMERCIAL 48

21

COMMERCIAL 52

22

WARNING

Use Only Exmark Riding Attachments. Use of Other Riding Attachments May Create a Hazardous Condition Resulting in Injury

23

TRACKING L OR

24

NO OIL CHANGE

TRIVANTAGE

25

WARNING

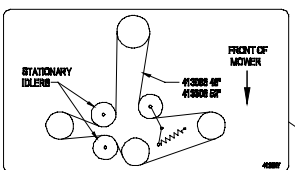
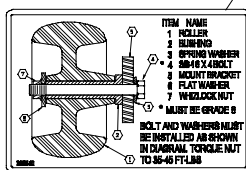
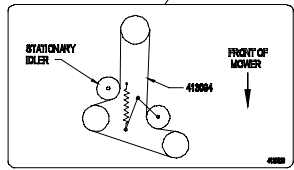
MAINTAIN PROPER AIRFLOW AND AVOID CONTACT. ALWAYS WEAR EYE PROTECTION AND GLOVES. ACCIDENTAL CONTACT WITH AIR OR GLOVES COULD CAUSE BURN TO EXPLUDE. DO NOT DRIVE.

ON LINE NUMBER ONLY OR IDENTITY FOR CONTACT. CALL WITHOUT PROPER TRAINING. IN PRESENCE OF AN ACCIDENT, CALL THE LOCAL POLICE AND FIRE DEPARTMENT IMMEDIATELY. KEEP OUT OF REACH OF CHILDREN.

26

DRIVE WHEEL RELEASE

DO NOT OVER-TIGHTEN

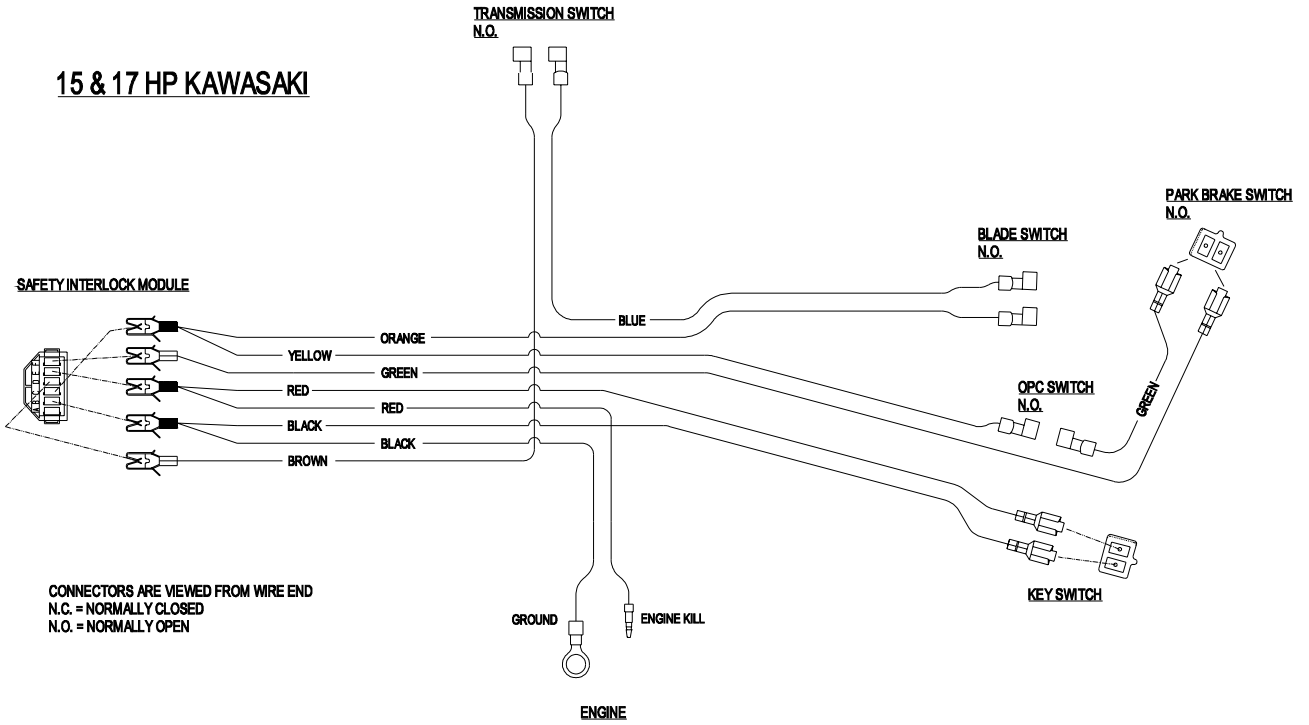


30

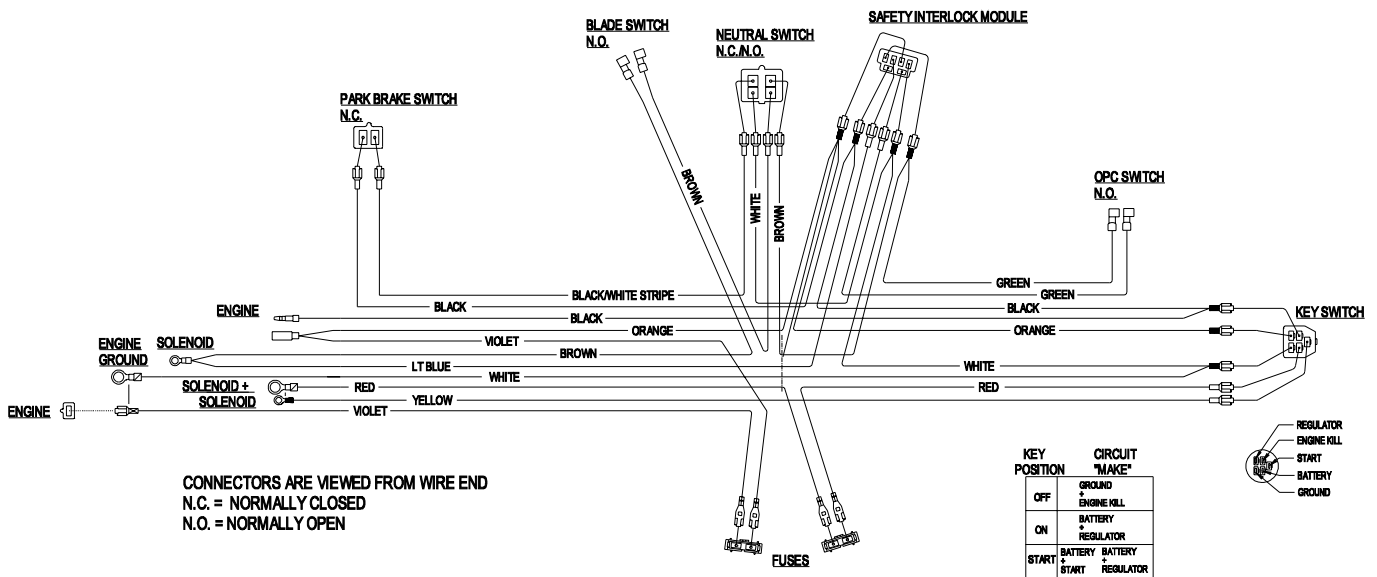
DANGER

KEEP HANDS and FEET AWAY

WIRING DIAGRAMS



17 HP KAWASAKI ELECTRIC START



**SEE EXMARK'S COMPLETE
LINE OF PRODUCTS FOR TURF CARE**

LAZER Z[®]

LAZER Z[®] HP

LAZER Z[®] XP

TURF RANGER[®]

TURF TRACER[®]

TURF TRACER[®] HP

VIKING HYDRO

METRO[®]

METRO[®] HP

SELF STEERING SULKY

ULTRA VAC[™]

GRASS CATCHER

MICRO-MULCH[™] ACCESSORY

©1997,1998, 1999, 2000, 2001
EXMARK MFG. CO. INC.
INDUSTRIAL PARK BOX 808
BEATRICE, NE 68310
ALL RIGHTS RESERVED

PART NO. 103-1774
(402) 223-6300
FAX (402) 223-5489
PRINTED IN U.S.A.

