

WB22 WB24 High Wheel Mower Parts and Owners Manual

MOWER MODEL:

SERIAL:

ENGINE MODEL & HP:

DATE PURCHASED:

PURCHASED FROM:

**You must receive special training from the dealer before
operating this mower.**

9/13/2006

Commercial Mower Operators Manual & Parts List

This mower is intended for commercial use

Special Training is required to operate this mower safely

MOWER MODEL:

SERIAL:

ENGINE MODEL & HP:

DATE PURCHASED:

PURCHASED FROM:

Important Information about this Manual

This owner's manual is considered a permanent part of mower. It must be available to all of the operators and/or person(s) servicing the mower. Should the mower be resold, this manual must remain with the mower. All information, illustrations, and specifications contained in this manual were in effect at the time of publication. reserves the right to change, modify, and discontinue specifications and design without notice. If there is a change that has been made to your mower that is not shown or reflected in this manual, please see your authorized dealer before operating and/or servicing of equipment. Congratulations on the purchase of your new Commercial Mower. We at are confident that this mower will provide you with years of excellent performance, durability, and trouble free service when operated and maintained as directed in this manual. Should you ever have any questions regarding the operation, maintenance, or safety of your mower, please contact your authorized dealer. A space has been provided above to record information about your new . Please take time to record such information for future reference, especially when you contact an authorized dealer with questions. **You must receive special training from the dealer before operating this mower.**

WARRANTY STATEMENT

The WB22 and WB 24 are warranted for one (1) year from the original date of purchase for commercial use one year for industrial and rental use against defects in material or workmanship, when operated and maintained in accordance with the Owner's Manual. will provide, free of charge, any part, no labor will be considered, of the original equipment returned to us or our authorized servicing representative with transportation or postage prepaid and which upon examination shall be defective. The cost of replacing items that is subject to normal wear, such as but not limited to; air filters, belts, blades, oil filters, cables, tubes and tires, will be borne by the purchaser/owner. Engines are warranted by the engine manufacturer. Please see engine owner's manual for engine warranty. This warranty does not cover any mower that has been subject to neglect, negligence, misuse, or accident, or that has been operated in any way contrary to the operating instructions as specified in the Owner's Manual. This warranty does not cover any mower, which has been altered or modified, changing the performance or durability. In addition, the warranty is not extended to repairs made necessary by the use of parts or accessories, which, in the reasonable judgment of are compatible with the mower or adversely affect its operation, performance, or durability. This warranty is not transferable. assumes no responsibility or incidental, consequential, or other damages including, but not limited to: expense for gasoline, expense of delivering the mower to a authorized dealer and expense of returning it to the owner, mechanic's travel time and labor, telephone or communication charges, rental of a like product during the time warranty repairs are being performed, travel, loss or damage to personal

property, loss of revenue, loss of the use of the time or inconvenience. There are no other expressed or implied warranties and liability for consequential damages under this warranty and are excluded to the extent exclusions are permitted by law. Warranty service will be authorized only when proof of purchase is provided. The proof of purchase must contain the model number, serial number, and date of purchase, purchase price and from whom the unit was purchased. This warranty is limited to parts replacement only. Please retain the defective parts until the replacement parts are received. In some case, the parts may be requested to be returned. If parts are requested to be returned, they must be shipped prepaid and insured. Cost of shipping these parts is the responsibility of the owner or purchaser of the mower.

Important Owner and Dealer Information:

Please note that the warranty on this unit is for parts replacement only. No additional expenses or charges will be considered. Additional expenses and charges include but are not limited to, labor, freight, and travel time and shop expenses. These charges must be borne by the mowers owner or purchaser. If parts replacement is required under this warranty, please send a request to your distributor. The request must contain the following information: part number, quantity, model number, serial number, copy of original bill of sale and a description of the failure. Replacement parts will be shipped to you at no charge. Installations of these parts are not covered under warranty.

IMPORTANT INSTRUCTIONS:

Read the owners manual and make it readily available for future reference.

Be familiar with the operation of the mower. Extreme emphasis should be placed on operator safety and the mower's safety features.

Know the correct mower and engine service and maintenance requirements, and be able to perform or have preformed the service and recommended lubrication as required.

GENERAL

Before servicing, check the mower for such items as belt tension and cutting height adjustment, to be sure mower functions properly. Check attachment of the rear guard and inspect to make sure the chute guard is secure.

HANDLEBARS

This mower is shipped with the handlebars detached. Handlebars must be bolted into position before use. All controls must be properly mounted to the handlebars before starting.

Repairs or Service

IMPORTANT: If service or parts are required, be prepared to supply the service person with the model and serial number of the mower and engine. Include a complete description of the problem encountered.

TRAINING

Read the operating and service instruction manual carefully and completely. Be familiar with all safety controls and the proper use of the equipment.

NEVER let a child operate a power mower.

Keep the area of operation clear of all persons, especially small children and pets.

PREPARATION

1. Never operate your power mower unless **ALL GUARDS** are securely attached Do not remove rear guard !
2. Thoroughly inspect area where the mower will be used. Remove all stones, sticks, bones and other foreign objects.
3. Wear long pants and substantial shoes when operating the mower. Do not operate mower-wearing sandals, tennis shoes, sneakers, shorts or loose-fitting clothing that could be caught in moving parts.
4. Check gas level before starting engine. Do not fill gas tank indoors, when the engine is running, or while the engine is still hot, Wipe off any spilled gasoline before starting engine.
5. Mow only in daylight.
6. Never operate a mower in wet grass. Always be sure of your footing, keep a firm hold on the handle, and walk, **NEVER RUN** !
7. **NEVER** operate a mower without proper eye and hearing protection, i.e.: safety glasses face shield or goggles.

STARTING & STOPPING

1. Fill the engine crankcase with oil. Refer to the engine instruction manual supplied with this mower.
2. Fill the gas tank. Refer to engine manual.
3. Pump primer bulb on engine, or set throttle control to proper position.

TO START

1. Hold lever against the handlebar and pull recoil starter cord **See figure 3**

NOTE: Return cord slowly-DO NOT LET HANDLE SNAP !



REMEMBER: The lever control must be held against handlebar to operate the mower. **See Figure 1**
When the lever is release, the engine and blade will stop. **See Figure 2**

GOING FORWARD:

Slowly press the control lever down and the mower will start to move forward. (Note: Only the WB24 can do this).

TO STOP

1. Release all lever controls, engine, and blade will stop. **SeeFigure 2**
2. **IMPORTANT:** Release the lever control this will STOP the blade and engine. If this feature fails to function, **DO NOT OPERATE MOWER**. Disconnect the spark plug wire and see your dealer.

REMEMBER: The safety features on this mower are for your protection. Do not tamper with or remove these

components.

OPERATION

1. Do not change the engine governor setting or over speed the engine.
2. Do not put hands or feet near or under rotating parts. Stay clear Of discharge area while the engine is running (Fig.5).



FIGURE 5

3. Stop the mower when crossing gravel drives, walks, roads, or any other area where thrown objects may be a hazard.
4. After striking a foreign object, or if the mower vibrates abnormally, stop the engine, disconnect, and secure the spark plug wire, Inspect the mower for any damage before restarting.
5. Before cleaning, repairing, or inspecting, make certain the blade and all other moving parts have come to a complete stop. Disconnect the spark plug and secure the wire away plug to prevent accidental starting.
6. Do not run the engine indoors.
7. Mow across the face of slope, never up and down. Exercise extreme caution when changing directions on slopes. Do not mow excessively steep slopes.

MAINTENANCE & STORAGE

1. In order for your safety controls to function at the peak of efficiency, they must be inspected and adjusted regularly. Initial inspection shall take place after the first two (2) hours. Belt tension is a very critical part of your safety inspection, and should be checked frequently.
2. Keep all nuts, bolts and screws tight to assure safe mower operation.
3. Never store equipment with gas in the tank or in a building near a spark or flame. Allow the engine to cool before storing in any enclosure.
4. To reduce fire hazard, keep mower free of grass, leaves or excessive grease.
5. Have your mower service and inspected every year by your authorized dealer, and if you perform repairs yourself, use only replacement parts.

IMPORTANT: If service or parts are required, be prepared to supply the service person with the model and serial number of the mower and engine Include a complete description of the problem encountered.

ENGINE GENERAL

Follow the engine manual supplied with this mower for proper engine maintenance and service. The engine on your is an item for which the manufacturer maintains a national service organization. FOR ENGINE PARTS AND REPAIR INSTRUCTIONS, CONTACT THE ENGINE MANUFACTURER'S DEALER. Your engine is designed for long lasting service when given proper care. For the proper care instructions, READ YOUR ENGINE MANUAL !

SPECIAL SERVICE INSTRUCTIONS

Check oil level before every mowing.

Change Oil every eight to ten hours of operation. Use high quality SAE 30 oil.

Use unleaded gasoline.

Keep your engine clean. Dirt and grass accumulation can result in serious damage to the precision parts of your engine.

ENGINE SERVICE

Refer to engine owner's manual.

CAUTION: BE SURE TO HANDLE FUEL OUTDOORS, AWAY FROM SPARK OR FLAME.

LUBRICATION

To lubricate your , apply bearing grease through the fitting on the hub housing. .You may use an air pressure or hand-held grease gun. To lubricate the wheels on your high quality grease may be packed inside the wheel hubs.

CUTTING HEIGHT ADJUSTMENT

Your is adjustable to a accommodated your cutting height requirements by lower and raising the front and rear wheels.

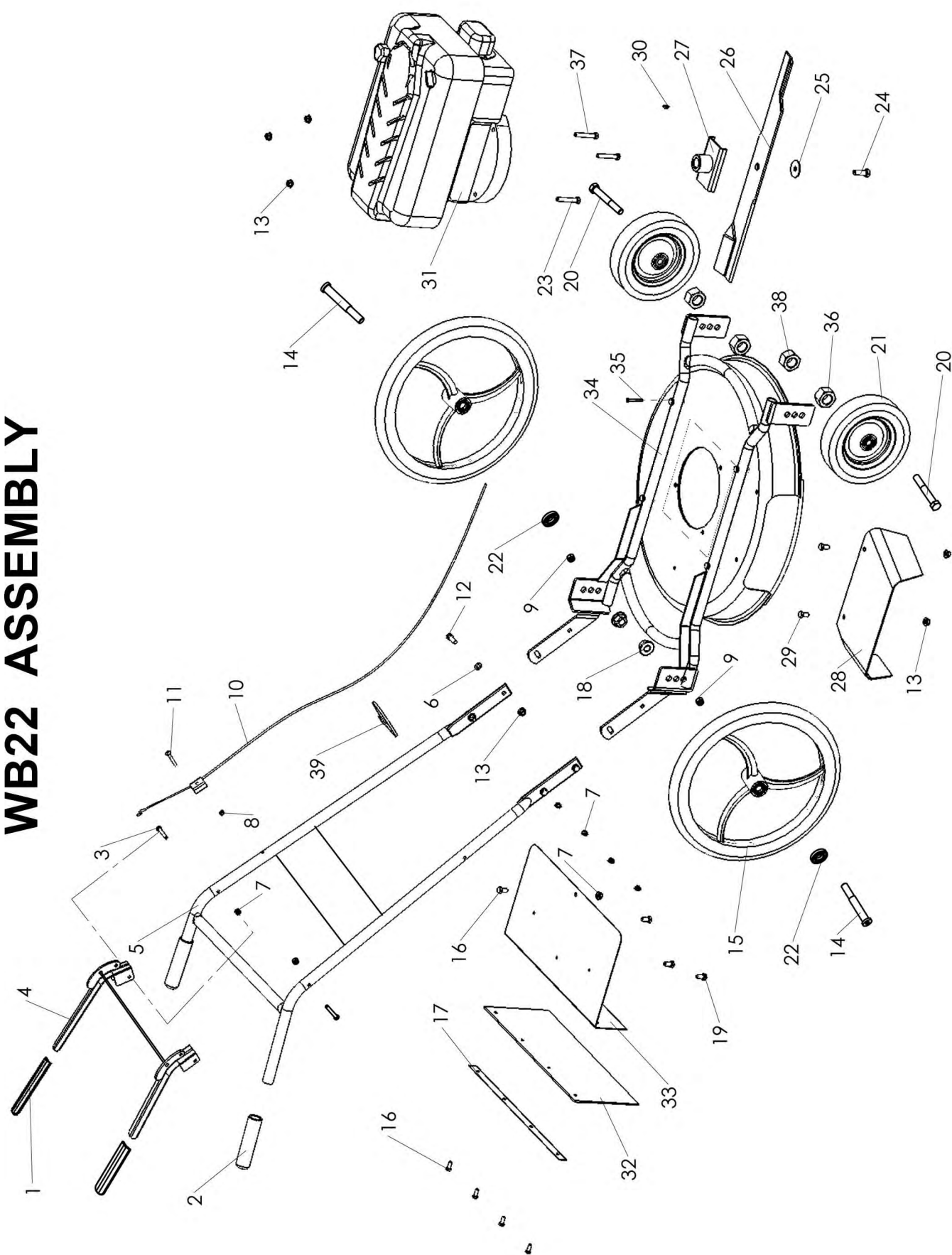
BLADE SHARPENING-CAUTION

CAUTION: WHEN ADJUSTING, REPLACING OR MOVING THE MOWER BLADE, THE SPARK PLUG WIRE MUST BE DISCONNECTED TO AVOID ACCIDENTAL STARTING.

CLEANING YOUR

Clean your after each use. Let the engine cool, and then wipe the grass and debris from mower and engine. Check mower pan for grass and dirt build-up. Disconnect the spark plug and tip mower on its side (muffler side up) to clean underneath deck. Check the blade and mounting hardware at frequent intervals for wear and tightness. Replace worn parts with original equipment parts for safety.

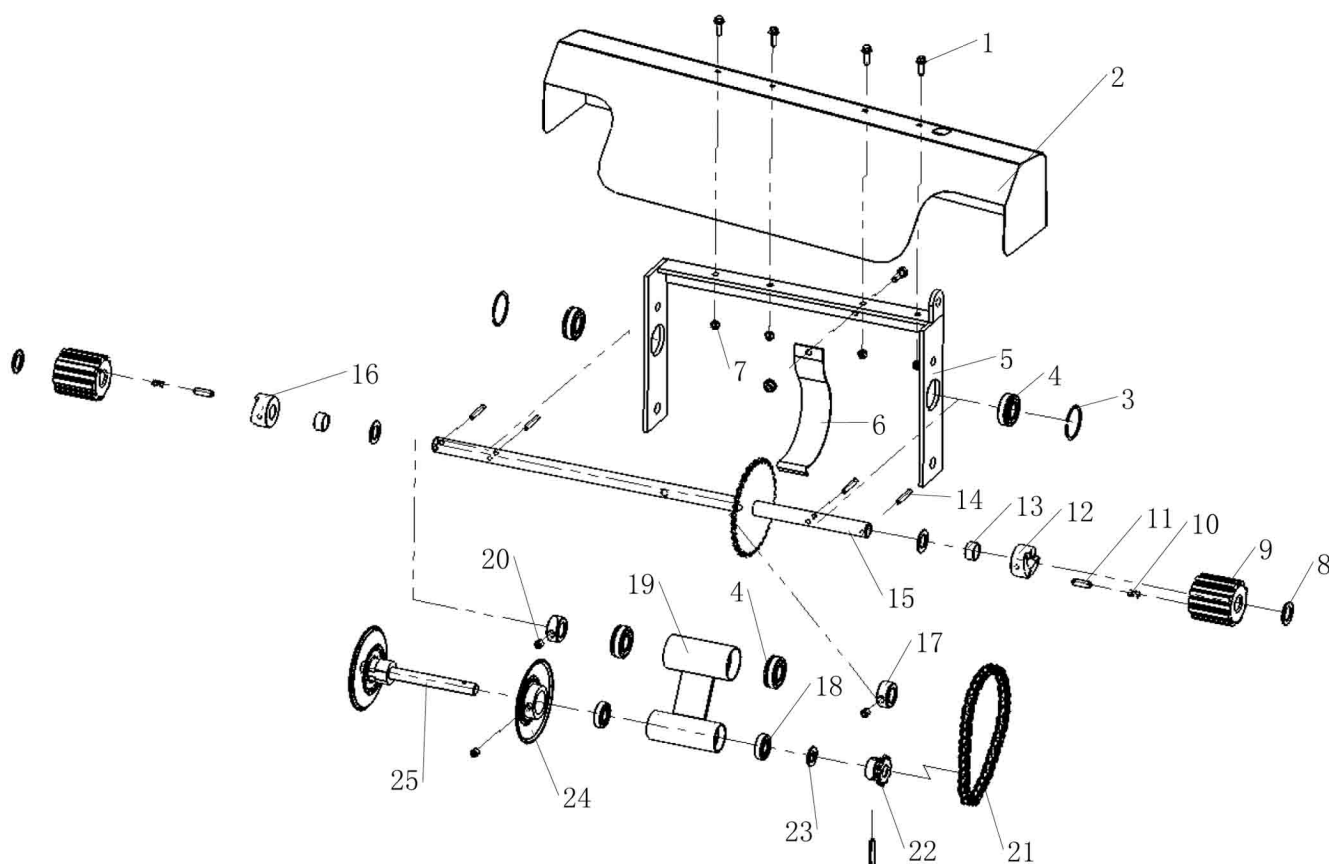
WB22 ASSEMBLY



WB22 ASSEMBLY

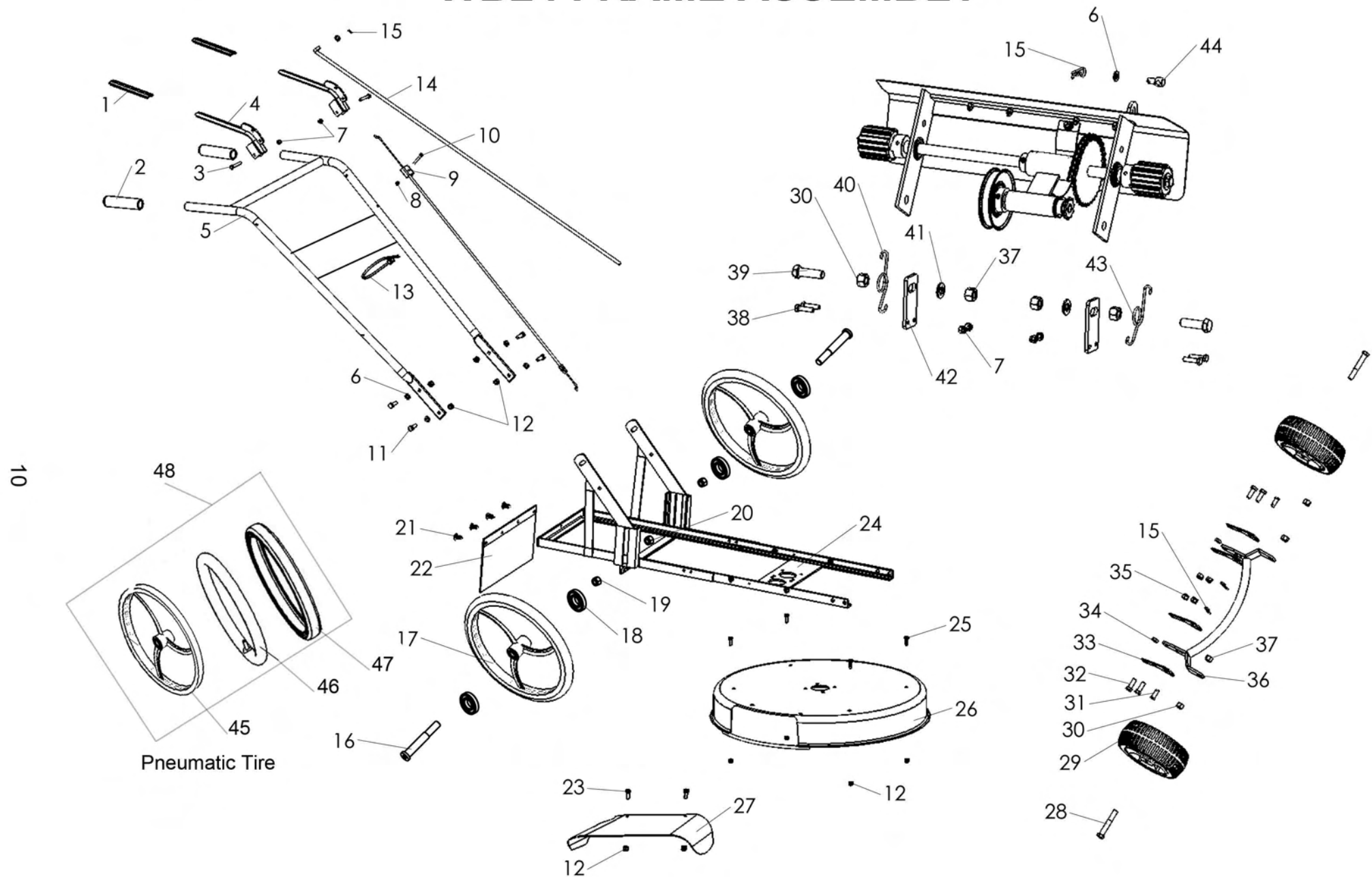
Item No.	Part Number	Description	Qty
1	400-001	Grip	1
2	400-034	Handle Grip	2
3	200-044	Hexagon Bolt M6×40 GB5782-86	2
4	400-028	Bail Weldment	1
5	400-035	Plow Handle	1
6	200-021	Plain Washer 8 GB95-85	4
7	200-009	Nylon Nut M6 GB889-86	11
8	200-013	Nylon Nut M5 GB889-86	1
9	200-174	Nut Thin M14 GB6172.1	2
10	400-005	Safety Cable	1
11	200-173	Bolt M5×45 GB818-85	1
12	200-119	Hexagon Bolt M8×25 GB5783-86	4
13	200-030	Nylon Nut M8 GB889-86	9
14	400-025	Back Wheel Axel	2
15	400-026	Back Wheel	2
16	200-072	Hexagon Bolt M6×20 GB5783-86	5
17	422A-001	Bracket	1
18	200-172	Nylon Nut M14 GB889	2
19	200-087	Hexagon Bolt M5×16 GB5783-86	3
20	400-008	Front Wheel Axel	2
21	400-009	Front Wheel	2
22	200-175	Bearing 6903 2RS	4
23	200-085	Hexagon Bolt M8×35 GB5783-86	2
24	400-014	Engine Bolt	1
25	200-176	Washer 10 DIN	1
26	422A-002	Straight Blade 22" B6.75	1
26	422A-002A	Blade 22" BQ6.5	1
27	422A-003	Blade Saddle	1
28	422A-006	Chute Ext	1
29	200-178	Hexagon Bolt M8×16 GB5783-86	2
30	200-106	Key 4×6.5×16 GB1099-79	1
31		Engine Assembly	1
32	400-011	Rear Deflector	1
33	422A-004	Flange Deck	1
34	422A-005	Mower Frame For 22"(A)	1
35	200-177	Hexagon Bolt M6×35 GB5783	4
36	200-107	Hexagon Nut M12 GB6170-86	2
37	200-108	Hexagon Bolt M8×60 GB5782-86	1
38	200-007	Nylon Nut M12 GB889-86	2
39	200-062	Wire Tie	1

WB24 TRANSMISSION ASSEMBLY



Item No.	Part Number	Description	Qty
1	200-087	Hexagon Bolt M5×16	5
2	424A-041	Sprocket Cover	1
3	200-112	Snap Ring 34	2
4	200-113	Bearing 99502	4
5	424A-002	Shaft Mount Weldment	1
6	424A-003	Flat Spring	1
7	200-013	Nylon Nut M5 GB889-86	5
8	424A-004	Precision Washer	4
9	424A-005	Crawler	2
10	424A-006	Spring	2
11	424A-007	Drive Pin	2
12	424A-008	Rh Ratchet Block	1
13	424A-039	Spacer	2
14	200-114	Roll Pin 5×30	5
15	424A-040	Cross Shaft Sprocket	1
16	424A-011	Lh Ratchet Block	1
17	424A-012	Set Collar	2
18	200-115	Bearing R8-RS	2
19	424A-013	SP Tube	1
20	200-116	Screws M8×8 GB77-85	3
21	200-117	Drive Chain # 35	1
22	424A-014	Sprocket 10 Tooth	1
23	200-071	Plain Washer 12	1
24	424A-015	Half Shaft Pulley RH	1
25	424A-016	Half Shaft Pulley LH	1

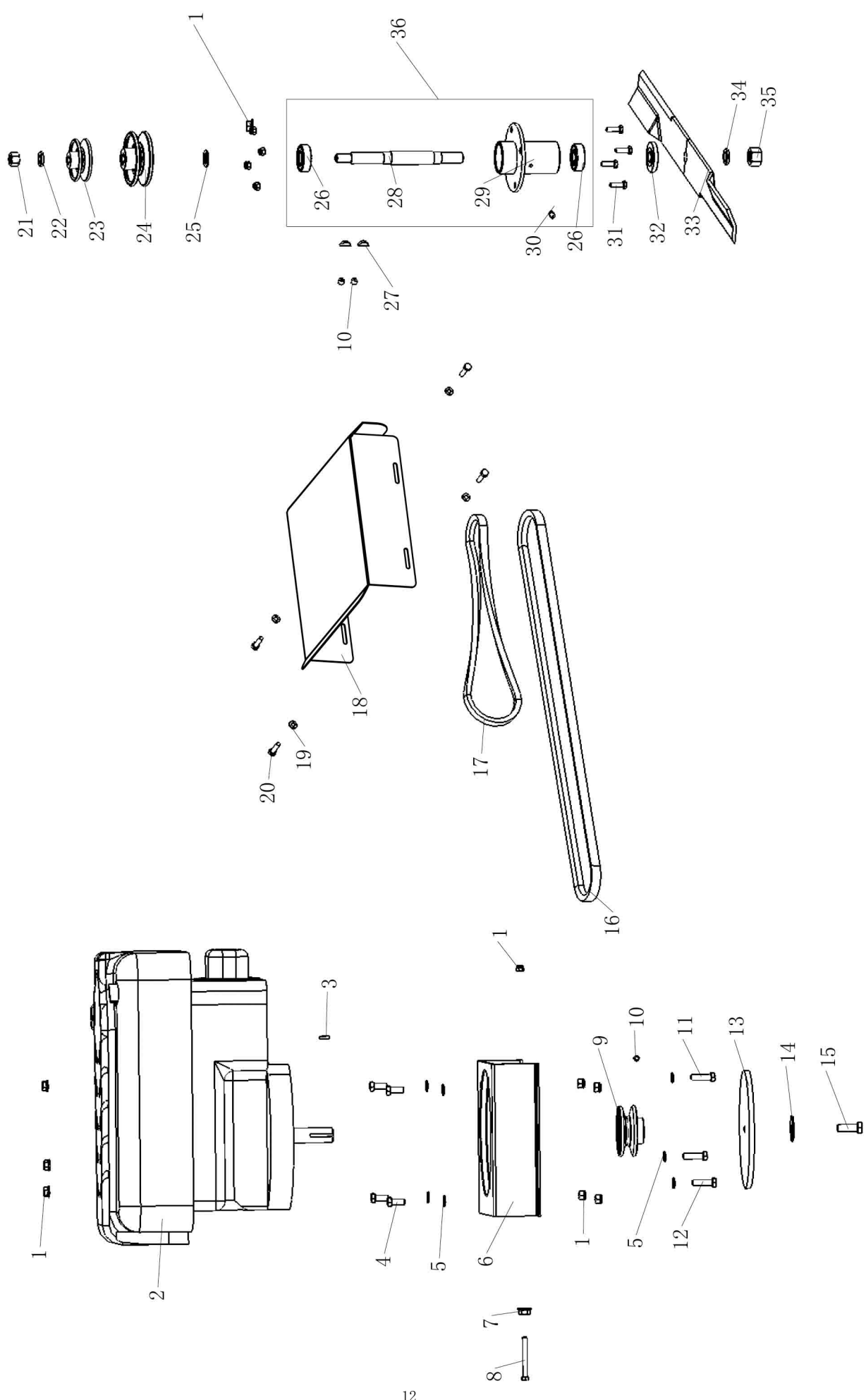
WB24 FRAME ASSEMBLY



WB24 FRAME ASSEMBLY

Item No.	Part Number	Description	Qty
1	400-001	Grip	2
2	400-034	Handle Grip	2
3	200-044	Hexagon Bolt M6×40 GB5782-86	2
4	400-003	Bail	2
5	400-035	Plow Handle	1
6	200-021	Plain Washer 8 GB95-85	5
7	200-009	Nylon Nut M6 GB889-86	6
8	200-013	Nylon Nut M5 GB889-86	1
9	400-029	Safety Cable	1
10	200-173	Bolt M5×45 GB818-85	1
11	200-119	Hexagon Bolt M8×25 GB5783-86	10
12	200-030	Nylon Nut M8 GB889-86	10
13	200-062	Wire Tie	1
14	424A-017	SP Rod	1
15	200-069	Hair Pin Cotter	4
16	400-025	Back Wheel Axel	2
17	400-026	Back Wheel	2
18	200-175	Bearing 6903 2RS	4
19	200-097	Nut Flange M14 GB6177-86	2
20	200-172	Nylon Nut M14 GB889	2
21	200-095	Push Rivet	4
22	422B-006	Rear Deflector	1
23	200-178	Hexagon Bolt M8×16 GB5783-86	2
24	424A-021	Mower Frame For 24"(A)	1
25	200-091	Hexagon Bolt M8×20 GB5783-86	4
26	424A-022	Deck Weldment	1
27	400-010	Chute Ext	1
28	400-008	Front Wheel Axel	2
29	400-009	Front Wheel	2
30	200-107	Hexagon Nut M12 GB6170-86	4
31	200-109	Clevis Pin 10×20 GB/T882-86	2
32	200-103	Hexagon Bolt M10×30 GB5783-86	4
33	400-016	Height Adjustment	4
34	400-017	Space	2
35	200-006	Nylon Nut M10 GB889-86	4
36	400-018	Front End	1
37	200-007	Nylon Nut M12 GB889-86	4
38	200-036	Hexagon Bolt M6×20 GB5783-86	4
39	200-121	Hexagon Bolt M12×35 GB5783-86	2
40	424A-025	Torsion Spring LH	1
41	200-127	Plain Washer 12 GB5287	2
42	424A-026	Lg SP Mount	2
43	424A-027	Torsion Spring RH	1
44	100-042	Swivel, Brake Rod	1
45	424A-044	Wheel Rim	1
46	424A-034	Tube	1
47	424A-035	Tire	1
48	424A-045	Complete Wheel Assembly	2

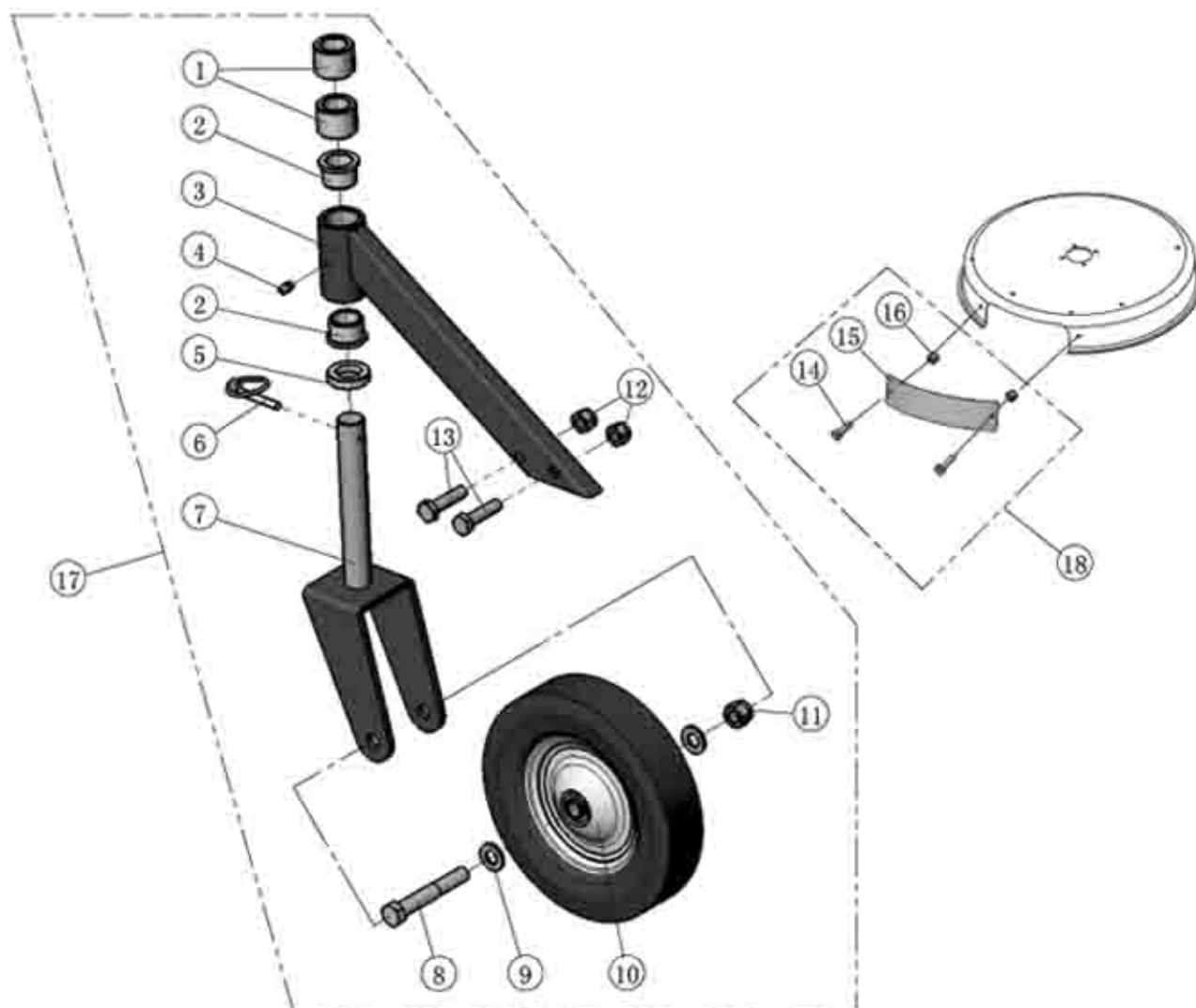
WB24 GEARING ASSEMBLY



WB24 GEARING ASSEMBLY

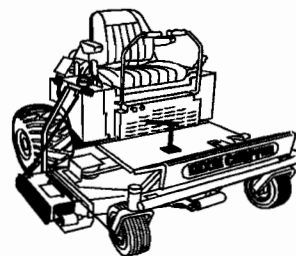
Item No.	Part Number	Description	Qty
1	200-030	Nylon Nut M8 GB889-86	11
2		Engine Assembly	1
3	200-106	Key 4×6.5×16 GB1099-79	1
4	200-091	Hexagon Bolt M8×20 GB5783-86	4
5	200-021	Plain Washer 8 GB95-85	7
6	400-030	Eng. Mount	1
7	200-029	Nut Flange M8 GB6177-86	2
8	200-179	Hexagon Bolt M8×50 GB5783	2
9	400-031	Engine Pulley	1
10	200-083	Bolt Screws M8×8 GB79-85	3
11	200-104	Hexagon Bolt M8×35 GB5782-86	2
12	200-108	Hexagon Bolt M8×60 GB5782-86	1
13	400-021	Fly Wheel	1
14	200-176	Washer 10 DIN	1
15	400-014	Engine Bolt	1
16	400-033	Belt	1
17	424A-023	Belt	1
18	424A-042	Deck Shield	1
19	200-042	Plain Washer 6 GB95-85	4
20	200-036	Hexagon Bolt M6×20 GB5783-86	4
21	200-124	Hexagon Nut M12×1.5 GB6171-86	1
22	200-078	Lock Washer 12 GB93-87	1
23	424A-030	Pulley	1
24	400-032	Pulley	1
25	200-111	Plain Washer 16 GB95-85	1
26	200-110	Bearing 6203 2RS	2
27	200-125	Key 5×6.5×16 GB1099-79	2
28	424A-031	Hub Shaft	1
29	400-015	Bearing Housing	1
30	200-026	Grease Fitting M6 GB1152	1
31	200-119	Hexagon Bolt M8×25 GB5783-86	4
32	400-019	Blade Spacer	1
33	424A-032	Blade 24"	1
34	200-096	Lock Washer 16 GB93-87	1
35	200-017	Hexagon Nut M16×1.5	1
36	424A-037	Cutter Housing Assembly	1

WB24 ACCESSORIES



Item No.	Part Number	Description	Qty
1	410-001	Spacer Sleeve	4
2	15005	Bronze Pivot Bushing	4
3	410-002	Castor Support	2
4	200-026	Grease Fitting M6 GB1152-89	2
5	15031	Washer	2
6	15023	Lynch Pin Tire	2
7	410-003	Castor Yoke	2
8	400-008	Front Wheel Axle	2
9	200-071	Plain Washer 12 GB95-85	4
10	400-009	Front Wheel	2
11	200-007	Nylon Nut M12 GB889-86	2
12	200-006	Nylon Nut M10 GB889-86	4
13	200-019	Hexagon Bolt M10×40 GB5782-86	4
14	200-178	Hexagon Bolt M8×16 GB5783-86	2
15	400-040	Mulch plate	1
16	200-030	Nylon Nut M8 GB889-86	2
17	410-000	Swivel Wheel Kit	2
18	400-041	Mulch plate Assembly	1

Product/Warranty Registration Dealer Delivery Certification



DIXIE CHOPPER
The World's Fastest Lawn Mower

Date of Purchase _____
Dixie Chopper Model # _____
Dixie Chopper Serial # _____
Engine Brand _____ Engine Model # _____
Engine Serial # _____
Purchaser/Business Name _____
Title _____
Street Address _____
City _____
State _____ Zip _____
E-mail _____
Phone # _____

Authorized Dixie Chopper Dealer

Name _____
Address _____
City _____ ST _____ Zip _____
Dixie Chopper Dealer # _____
Dealership Phone # _____

I have received the unit above in satisfactory condition.
I have received the **Operators Manual** for the unit above.
I have been given instructions regarding safe & non-safe operating practices, and intended uses of this machine.

All controls, as well as safety and operating decals on this machine have been explained for my understanding.

I have been instructed on the proper maintenance and adjustments of this machine with references being made to the operators manual as well as the machine.

The **Warranty** coverage of this machine has been briefly explained for my understanding, and pointed out in the operators manual for my further reference.

I have been instructed to further familiarize myself with the proper operation of this machine in an area clear of people and obstructions **prior to normal usage**.

I have presented the **Operators Manual** for the above unit to the purchaser or unit operator and have given same person instructions on safe and non-safe operating practices, and intended uses of this machine.

I have pointed out, and explained all operating and safety decals on the machine and in the **Operators Manual**, as well as instructing the purchaser/operator with him/her actually operating controls of the machine for his/her better understanding.

I have explained the **Warranty** coverage of this machine and pointed-out the entire warranty statement in the operators manual as reference.

I have instructed the purchaser/operator to further familiarize themselves with the machine clear of people and obstructions **prior to normal usage**.

The unit above has been **pre-delivery-prepared** in accordance with Dixie Chopper guidelines.

Purchaser's
Signature _____

Authorized Dealer
Signature _____

Product Registration to be mailed same day as purchase!