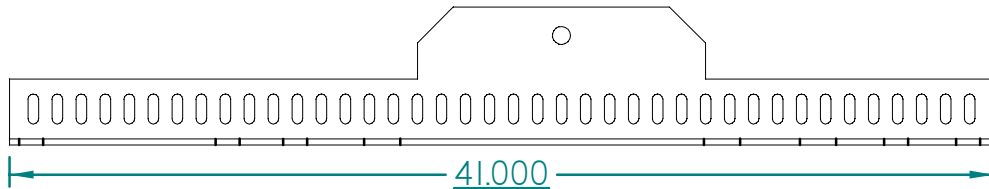




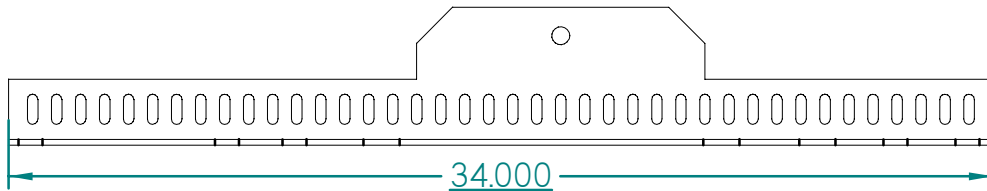
# ZEBRA KIT DRAG CHAIN BRACKET

XXW



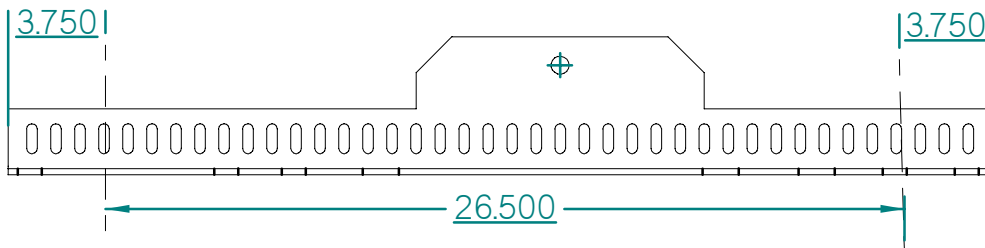
Sent as an XXW. NO MODIFICATION IS NEEDED

XW



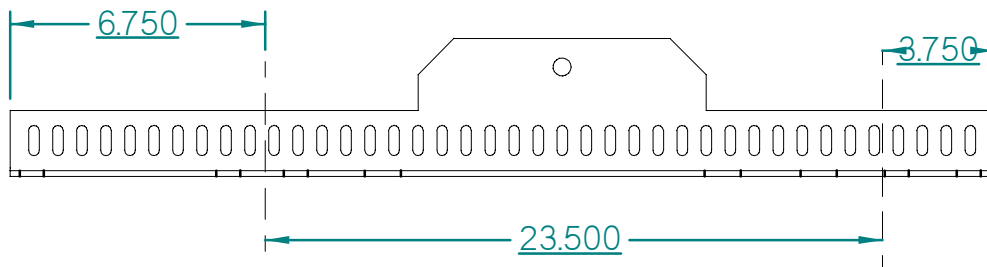
Sent as an XW. NO MODIFICATION IS NEEDED.

XF

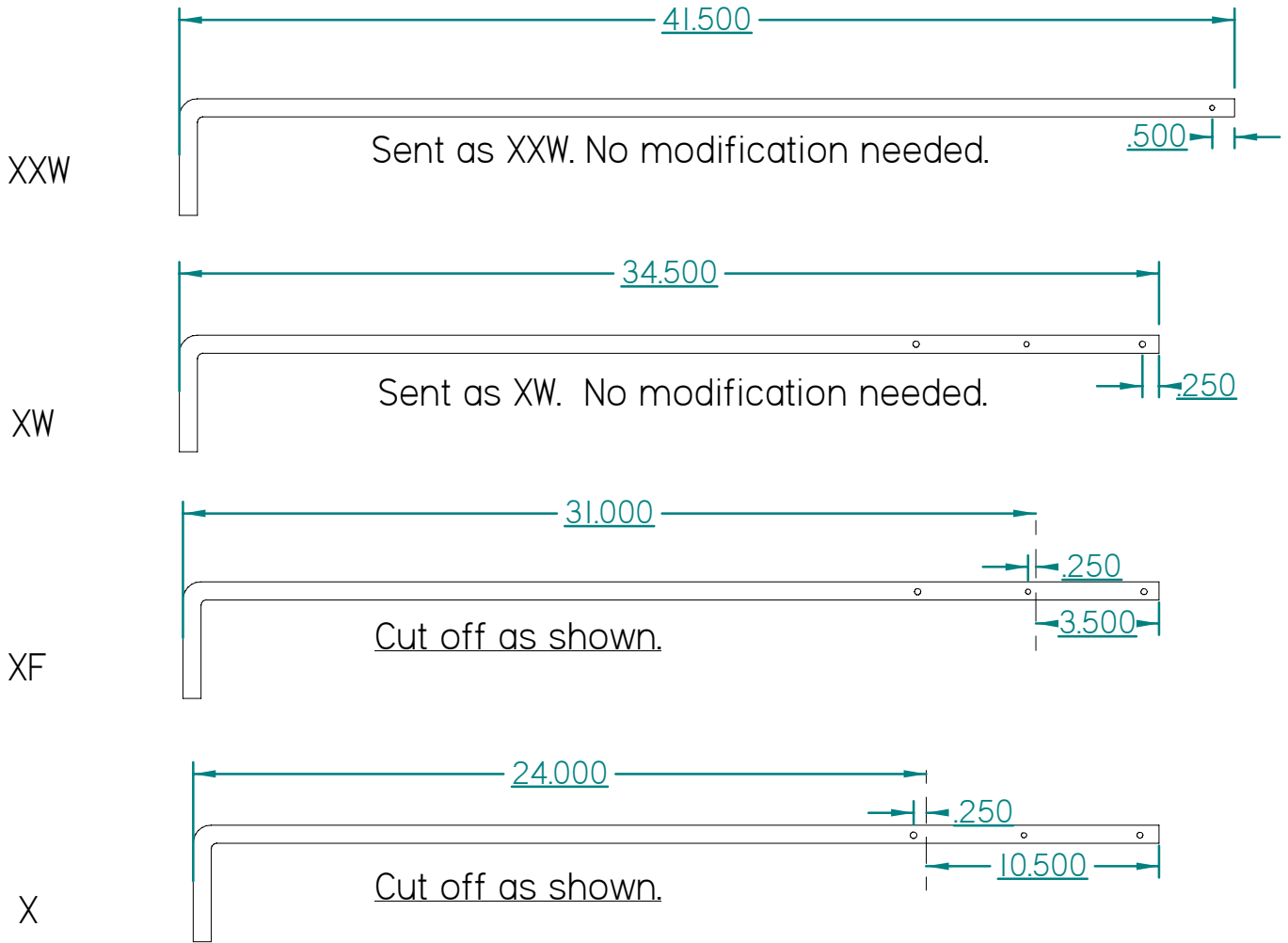


Cut off as shown above.

X



Cut off as shown above.



ITEM NO.	DESCRIPTION	PART NO.
1.	XXW Zebra Kit.....	98023
2.	XW, XF, X Zebra Kit.....	98024
3.	XXW Zebra Bracket.....	98027
4.	XW, XF, X Zebra Bracket.	98028
5.	XXW Zebra Rod.....	98029
6.	XW, XF, X Zebra Rod.....	98030
7.	12 Link Chain (30).....	98031
8.	11 Link Chain (2).....	98032
9.	10 Link Chain (2).....	98033
10.	Clip.....	C-104
11.	Washer.....	W-123

**Notes**

## ***DIXIE CHOPPER***

6302 E. County Road 100 North  
Coatesville, IN. 46121  
Phone 1-765-CHOPPER  
[www.dixiechopper.com](http://www.dixiechopper.com)

Dixie Chopper, Magic Circle, and the Magic Circle Atom Logo are all trademarks of Magic Circle Corporation. Kohler, Command, and Born to Run, are all trademarks of Kohler Co. Hydro-Gear is the trademark and Company name. The logos, trademarks and company names may not be reproduced without permission.

Printed In USA

Specifications and instructions subject to change without notice.

Print Date 9/18/02