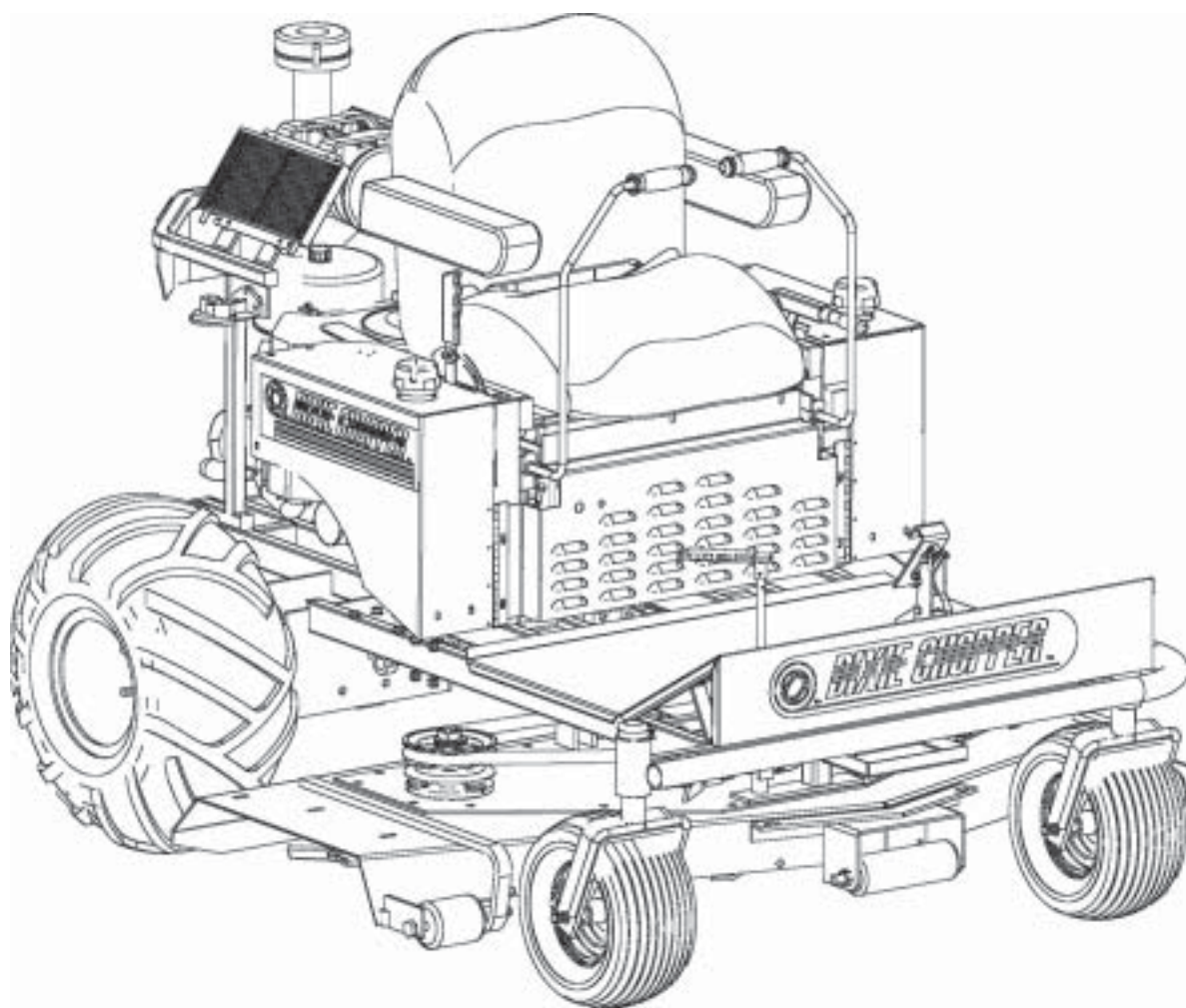


# **DIXIE CHOPPER**

*The World's Fastest Lawn Mower*



**GENERAC REPOWER  
Parts & Information  
26.5Hp and 30Hp  
Repower Kits**

July 2002

**DIXIE CHOPPER**

The World's Fastest Lawn Mower

**S.N. Engine**

**S.N. Machine**

**Engine to Deck Belt Part Number**

**Engine to Transmission Part Number**

**Date Engine Was Installed**

**Engine**

Engine warranty is provided by the engine manufacturer. Please refer to the engine manufacturer warranty statement included within the ownership materials provided with the unit. Dixie Chopper is not authorized to handle warranty adjustments on engines. Engine warranty claims must be filed with the appropriate engine manufacturer ( Generac, Kohler, Kawasaki, Honda etc.) for necessary warranty repairs. In general, engines used on Dixie Chopper units are warranted by the respective engine manufacturer for a period of two years from the retail purchase date on behalf of the original owner.

**Transportation for Warranty Repairs**

A Dixie Chopper complete unit (including any defective part's) requiring warranty repair, must be returned to an authorized Dixie Chopper Service Dealer within the warranty period. The expense of transporting the unit to and from the dealer for warranty work will be the responsibility of the unit owner.

*All warranty work must be performed by an authorized Dixie Chopper Servicing Dealer.*

This warranty covers only Dixie Chopper complete units which are properly serviced, maintained, and operated under conditions considered normal for commercial turf equipment.

**Disclaimer**

Any and all statements or representations made by seller of this equipment, including those set forth in any sales literature or made orally by any sales representative, are superceded by the terms of this warranty. There are no representations or warranties, which have been authorized and provided to the buyer of Dixie Chopper equipment, other than as set forth in this warranty. Any affirmation of fact or promise made by Dixie Chopper or any of its representatives to the buyer which relates to the goods that are the subject of this warranty shall not be regarded as part of the basis of the bargain and shall not be deemed to create any express warranty that such goods shall conform to the affirmation or promise.

**Dixie Chopper reserves the right to make changes or add improvements to its products at any time without incurring any obligation to make such changes to products previously manufactured. Neither Dixie Chopper, nor its dealers, accept responsibility for variations which may be evident in the actual specifications of its products and the statements and descriptions contained in this publication.**

To obtain the latest information on your Dixie Chopper lawn mower, and receive the highest quality service, please call or visit your nearest authorized Dixie Chopper Dealer.

**Dealer Name-**

**Phone Number-**

**DIXIE CHOPPER**

*The World's Fastest Lawn Mower*

**Please Note** All Parts in this brochure are for the 2000 and newer mowers, for older mowers Please refer to page 8 for additional parts.

**Also a new throttle and choke assembly is highly recommended.**

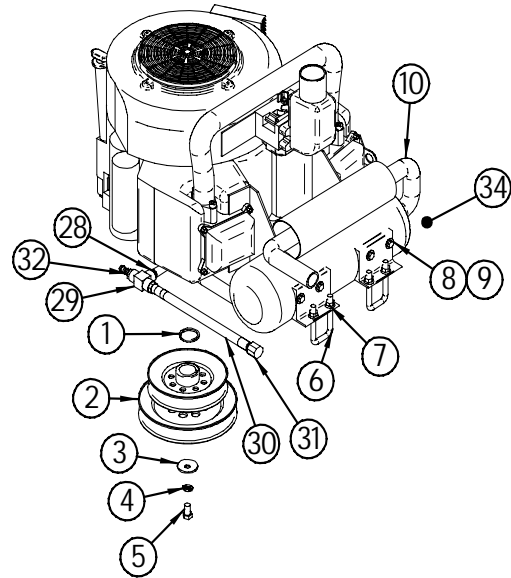
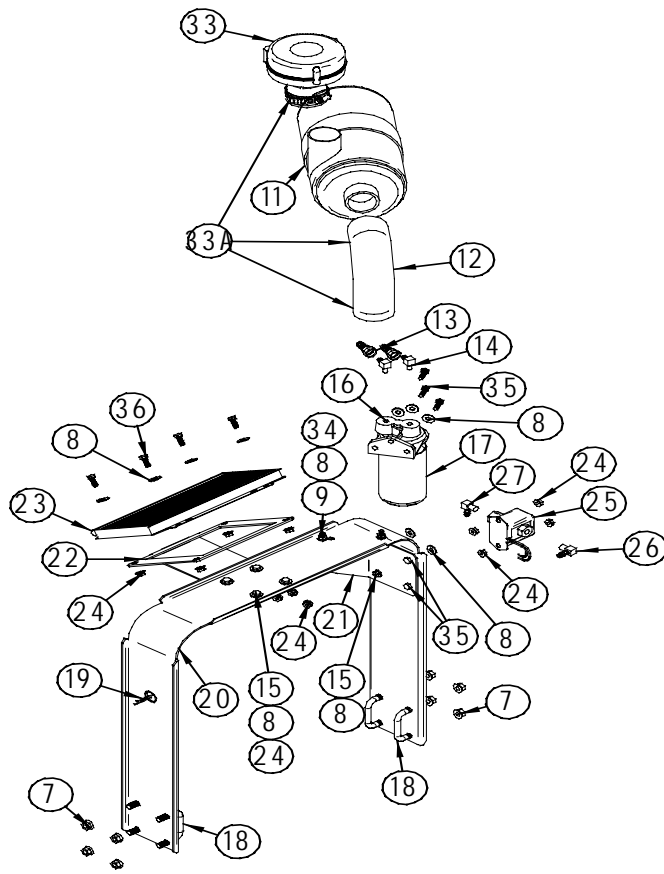
**P.N. 900062-Kit- Repower Generac 26.5hp.**

**P.N. 900063-Kit- Repower Generac 30hp.**

# DIXIE CHOPPER

The World's Fastest Lawn Mower

## 26.5Hp GENERAC Repower Part List



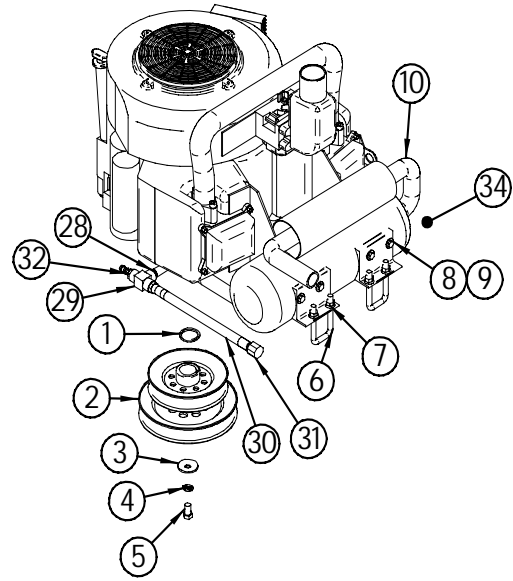
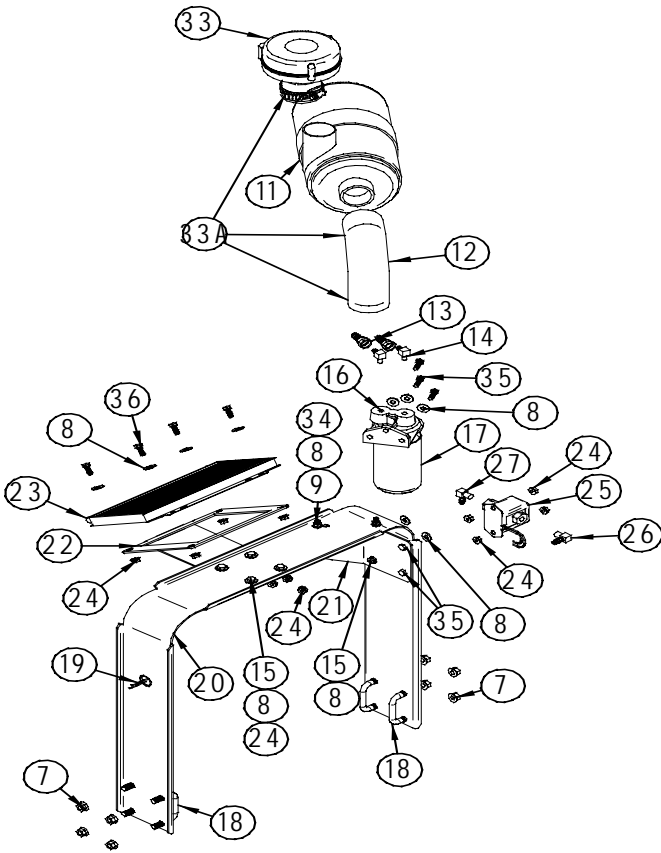
REF #	PART #	DESCRIPTION	QTY.
1	W-145	1 1/8" x1 3/4" Flat Washer (26.5Hp. Generac)	1
2	9907500X600D	Pulley - 5x6 Engine (26.5Hp. Generac)	1
3	W-144	7/16" Stainless Belleville Washer	1
4	W-108	7/16" Lock Washer	1
5	B-114	7/16"-20x3/4" Hex Head Bolt	1
6	B-204	3/8"-16x1 3/8"W x 3"L Sq U-Bolt	2
7	N-107	3/8"-16 Nylon Locknut	12
8	W-113	5/16" Flat Washer	19
9	B-107	5/16"-18x3/4" Bolt	6
10	600032	Muffler - Generac	1
	B-265	M8 x 25 Socket Head Cap Screw	4
	W-163	M8 mm Lock Washer	4
11	600036	Canister - Air for Generac Engine	1
	600046	Filter - Enginaire Primary Air	1
	600047	Filter - Enginaire Secondary Air	1
12	600039	Hose - Air Cleaner Hose For Generac 30Hp	1
13	60116	3/8" Swivel to 3/8" Barb	2
14	60113	1/8"x3/8" 90Deg. Fitting	2
15	B-102	1/4"-20x3/4" Stainless Steel Bolt	6
16	60122	Bracket - Filter Mount Amsoil	1
17	60119	Filter - 1 Micron Amsoil	1

REF #	PART #	DESCRIPTION	QTY.
18	B-247	3/8"-16x2 1/2"W x 2"L Sq. U-Bolt	4
19	60117	Oil Shut Down Horn	1
20	400062	Bracket - Main Mounting Bracket	1
21	400061	Bracket - Amsoil Generac	1
22	400059	Bracket - Oil Cooler Generac	1
23	60103-L	New Short Oil Cooler	1
24	N-102	1/4"-20 Whiz Flange Nut	17
25	500011	Generac Electric Fuel Pump	1
26	68015	90 Deg. Fitting 1/8"MP x 1/4" Push-Loc	1
27	400041	90 Deg. Fitting 1/8"MP x 5/16" Push-Loc	1
28	72230	3/8" Black Pipe Nipple 3" Long	1
29	60102	3/8" Black Pipe Tee	1
30	68230	Oil Drain Hose Assembly	1
31	10231	3/8" Steel Pipe Cap	1
32	87113	3/8" Male Pipe 3/8" Barb - Straight	1
33	90115	Turbo Pre-cleaner	1
33A	90125	2" Worm Clamp	3
34	N-103-W	5/16" Whiz Nut	6
35	B-172	1/4"x20x1" Bolt	5
36	B-101	1/4"x20x1/2" Bolt	4

# DIXIE CHOPPER

The World's Fastest Lawn Mower

## 30Hp GENERAC Repower Part List

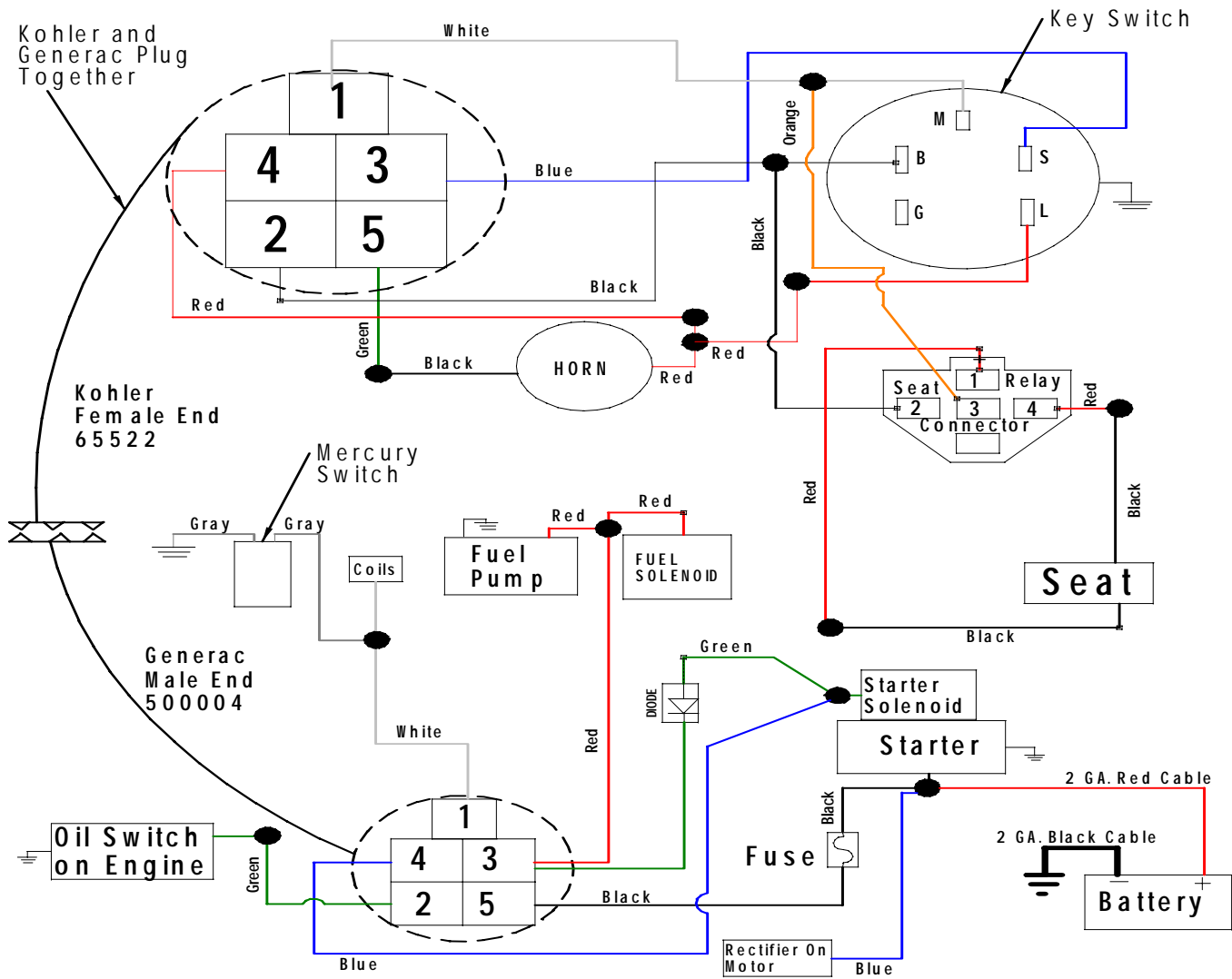


REF #	PART #	DESCRIPTION	QTY.
1	W-178	1 1/4" ID x 1 7/8" OD x 1/8" Thick Washer (30Hp. Generac)	1
2	600033	Pulley - 5x6x1 1/4 Engine (30Hp. Generac)	1
3	W-144	7/16" Stainless Belleville Washer	1
4	W-108	7/16" Lock Washer	1
5	B-114	7/16"-20x3/4" Hex Head Bolt	1
6	B-204	3/8"-16x1 3/8"W x 3"L Sq U-Bolt	2
7	N-107	3/8"-16 Nylon Locknut	12
8	W-113	5/16" Flat Washer	19
9	B-107	5/16"-18x3/4" Bolt	6
10	600032	Muffler - Generac	1
	B-265	M8 x 25 Socket Head Cap Screw	4
	W-163	M8 mm Lock Washer	4
11	600036	Canister - Air for Generac Engine	1
	600046	Filter - Enginaire Primary Air	1
	600047	Filter - Enginaire Secondary Air	1
12	600039	Hose - Air Cleaner Hose For Generac 30Hp	1
13	60116	3/8" Swivel to 3/8" Barb	2
14	60113	1/8"x3/8" 90Deg. Fitting	2
15	B-102	1/4"-20x3/4" Stainless Steel Bolt	6
16	60122	Bracket - Filter Mount Amsoil	1
17	60119	Filter - 1 Micron Amsoil	1

REF #	PART #	DESCRIPTION	QTY.
18	B-247	3/8"-16x2 1/2"W x 2"L Sq. U-Bolt	4
19	60117	Oil Shut Down Horn	1
20	400062	Bracket - Main Mounting Bracket	1
21	400061	Bracket - Amsoil Generac	1
22	400059	Bracket - Oil Cooler Generac	1
23	60103-L	New Short Oil Cooler	1
24	N-102	1/4"-20 Whiz Flange Nut	17
25	500011	Generac Electric Fuel Pump	1
26	68015	90 Deg. Fitting 1/8"MP x 1/4" Push-Loc	1
27	400041	90 Deg. Fitting 1/8"MP x 5/16" Push-Loc	1
28	72230	3/8" Black Pipe Nipple 3" Long	1
29	60102	3/8" Black Pipe Tee	1
30	68230	Oil Drain Hose Assembly	1
31	10231	3/8" Steel Pipe Cap	1
32	87113	3/8" Male Pipe 3/8" Barb - Straight	1
33	90115	Turbo Pre-cleaner	1
33A	90125	2" Worm Clamp	3
34	N-103-W	5/16" Whiz Nut	6
35	B-172	1/4"x20x1" Bolt	5
36	B-101	1/4"x20x1/2" Bolt	4

# DIXIE CHOPPER

The World's Fastest Lawn Mower



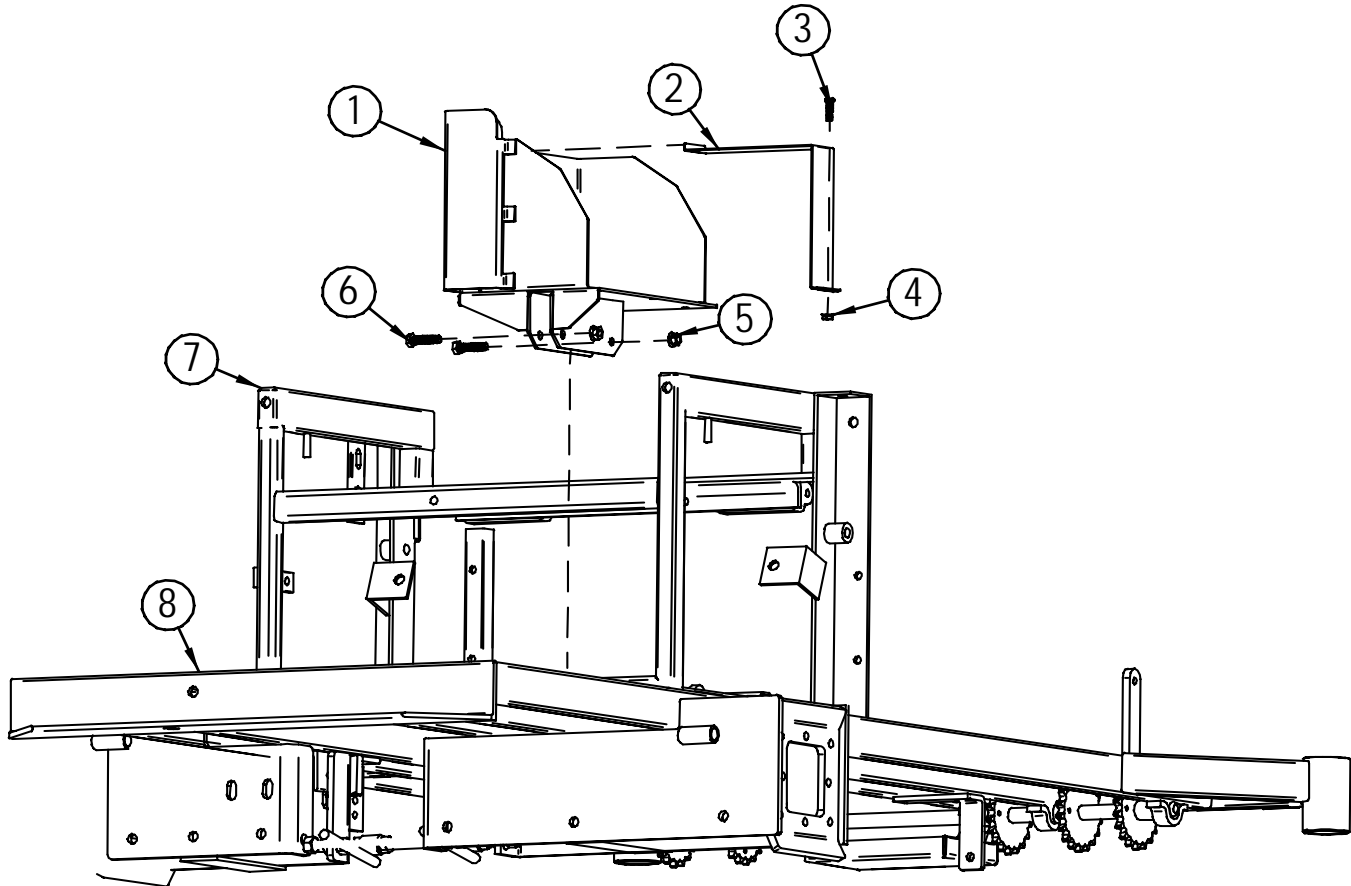
REF #	PART #	DESCRIPTION	QTY.
1	65522	Kohler Wiring Harness	1
2	500004	Generac Wiring Harness	1
3	20245	Ignition Switch	1
4	20246-T	Hour Meter/Tach	1
5	68247	Tach Bracket	1
6	N/A	Battery	1
7	400072	Battery Box (XT3000)	1
	97145	Diesel Battery Box (XFG2700)	1
8	400073	Battery Strap (XT3000)	1
	20228	Battery Strap (XFG2700)	1
9	500008	Battery 2Ga. Cable Positive 38" (XT3000)	1
	97323	Battery 2Ga. Cable Positive 80" (XFG2700)	1
10	500009	Battery Cable Ground 46" (XT3000)	1
	97322	Battery Cable Ground 12" (XFG2700)	1

REF #	PART #	DESCRIPTION	QTY.
11	500010	Battery Boot (XT3000)	1
	97327	Battery Boot (XFG2700)	1
12	40229	Mercury Switch	1
13	C-112	Clamp For Mercury Switch	1
14	65510	Seat Relay	1
15	600038	30Hp Generac Engine	1
	600041	26.5HP generac Engine	1
16	97191	Seat Relay Pigtail	1
17	65509	Fuse	1
18	20254	Fuse Holder	1
19	20253	Starter Solenoid	1
20	60117	Low Oil Horn	1

# DIXIE CHOPPER

The World's Fastest Lawn Mower

## BATTERY BOX



REF #	PART #	DESCRIPTION	QTY.
1	400072	Battery Box & Strap	1
2	400073	Strap	1
3	B-101	1/4"-20x1/2" Bolt	1
4	N-102	1/4-20 Whiz Flange Nut	1
5	N-108	3/8"-16 Whiz Nut	2
6	B-158	3/8"x1 1/2 Bolt	2
7	100007	Low Ride Transmission Frame	1
8	100018	Weldment - Xw Frame	1
	500008	Positive Battery Cable	1
	500009	Negative Battery Cable	1

# DIXIE CHOPPER

The World's Fastest Lawn Mower

*When converting the 72in deck machines to a 30hp engine you will need change some additional parts.*

**1 P.N. 9907750X100S** Center Spindle Pulley

**1 P.N. 9907B85** Engine to Deck Belt

For 72in machines 99XXXXX and older you will need the following parts.

**1 P.N. 9907500X750** Transmission Pulley (for 99XXXXX and older)

**1 P.N. 9907B41** Engine to Transmission Belt (for 99XXXXX and older)

*No additional parts are needed on the 00XXXXX and newer 60in machines, when converting to the 26.5 or 30 hp. engines.*

When converting a 60in deck machine that is 99XXXXX and older you will need for the following parts.

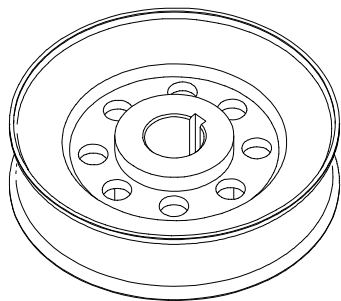
**1 P.N. 9907675X100S** Center Spindle Pulley

**1 P.N. 9907500X750** Transmission Pulley

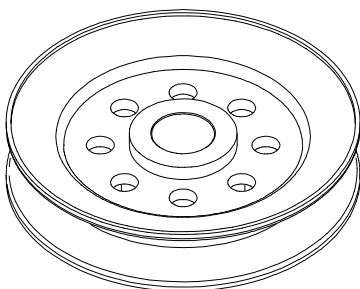
**1 P.N. 9907B85** Engine to Deck Belt

**1 P.N. 9907B41** Engine to Transmission Belt

**1 P.N. 72220** Belt Guard



T-Box Pulley 9907500X750S



Center Deck Pulley 9907525X100S

Belt Guard Assembly 72220

