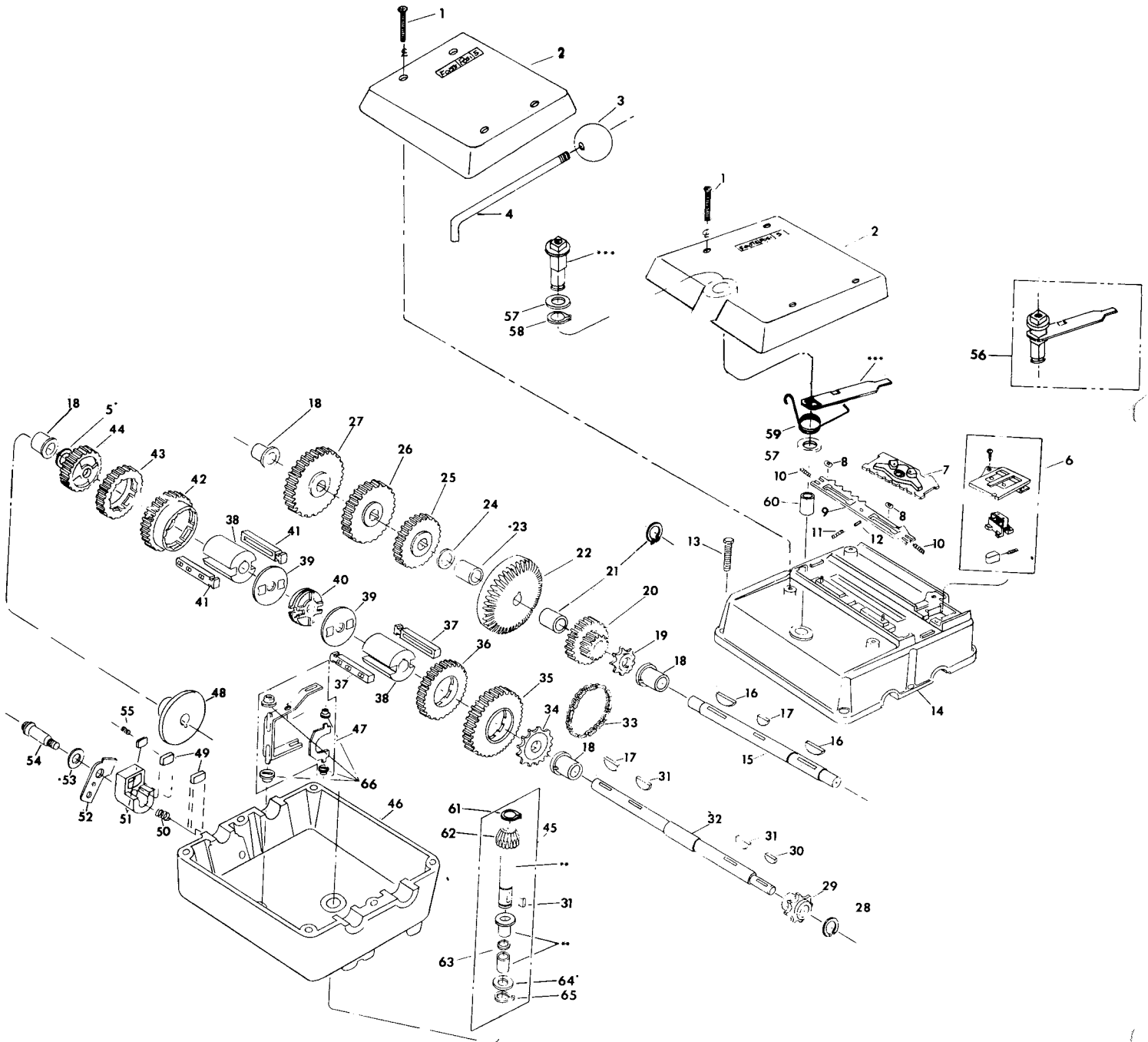


MODEL 2600

Five Speed

GEAR RATIO: 1ST. 6.75:1
2ND. 3.93:1
3RD. 2.84:1
4TH. 2.24:1
5TH. 1.75:1
REV. 3.68:1



Key No.	Foot Part No.	No. Req'd.	Description	Transmission Models Parts Used On	Key No.	Foot Part No.	No. Req'd.	Description	Transmission Models Parts Used On
1	1879	4	Oval Hd. S.T. Screw (No. 6-32 x 1 1/8)	Models 2600-1, 2600-3, 2600-4	36	1887	1	30 T. Spur Gear	All models
1	1976	4	Oval Hd. S.T. Screw (No. 6-32 x 7/8)	Models 2600-2, 2600-5, 2600-7, 2600-8, 2600-9, 2600-10, 2600-11, 2600-12, 2600-13	37	2687	2	R.H. Key Retainer Assembly	All models
2	2601	1	Shroud Kit Assembly	Models 2600-1, 2600-3, 2600-4	38	1890	2	Gear Hub	All models
2	2648	1	Shroud Kit Assembly	Models 2600-2, 2600-5, 2600-7, 2600-8, 2600-9, 2600-10, 2600-11, 2600-12, 2600-13	39	1891	2	Retaining Washer	All models
3	1318	1	Shift Knob	Models 2600-1, 2600-3, 2600-4, 2600-8, 2600-13	40	1892	1	Clutch Collar	All models
4	1903	1	Shift Lever	Model 2600-1	41	2686	2	L.H. Key Retainer Assembly	All models
4	1978	1	Shift Lever	Model 2600-3	42	1886	1	26 T. Spur Gear	All models
4	1985	1	Shift Lever	Model 2600-4	43	1885	1	23 T. Spur Gear	All models
5	1082	*	Washer (.031)	All models	44	1884	1	20 T. Spur Gear	All models
5	1423	*	Washer (.025)	All models	45	2567	1	Input Shaft Kit Assembly	All models
5	1441	*	Washer (.020)	All models	46	1864	1	Lower Housing	Models 2600-3, 2600-8, 2600-12, 2600-13
5	1708	*	Washer (.015)	All models	46	1864-A	1	Lower Housing	Models 2600-1, 2600-4, 2600-5, 2600-9, 2600-10
5	1959	*	Washer (.010)	All models	46	1864-B	1	Lower Housing	Models 2600-2, 2600-11
6	2759	1	Switch Kit Assembly	All models except 2600-10, 2600-11	46	1864-C	1	Lower Housing	Model 2600-7
7	2776	1	Carrier & Lockout Pawl Assembly	Model 2600-11	47	2624	1	Shifter Fork Kit Assembly	Models 2600-1, 2600-3, 2600-4
8	1899	2	Retaining Clip	All models	47	2634	1	Shifter Fork Kit Assembly	Models 2600-2, 2600-5, 2600-7, 2600-8, 2600-9, 2600-10, 2600-11, 2600-12, 2600-13
9	1908	1	Lockout Plate	All models	48	1902	1	Brake Disc	All models except 2600-8, 2600-12, 2600-13
10	1666	2	Compression Spring	All models	49	3295	2	Friction Puck	All models except 2600-8, 2600-12, 2600-13
11	1911	1	Detent Spring	All models	50	1479	1	Compression Spring	All models except 2600-8, 2600-12, 2600-13
12	1929	1	Detent Pin	All models	51	2618	1	Brake Jaw Assembly	All models except 2600-8, 2600-12, 2600-13
13	1919	6	Hx. Hd. S.T. Bolt (1/4-20 x 3/4)	All models	52	2272	1	Actuating Lever Assembly	Models 2600-2, 2600-11
14	1865	1	Upper Housing	Models 2600-1, 2600-3, 2600-4	52	2315	1	Actuating Lever Assembly	Models 2600-1, 2600-5, 2600-9, 2600-10
14	1865-A	1	Upper Housing	Models 2600-2, 2600-5, 2600-7, 2600-8, 2600-9, 2600-10, 2600-11, 2600-12, 2600-13	52	2357	1	Actuating Lever Assembly	Model 2600-7
15	1868	1	Drive Shaft	All models	52	2665	1	Actuating Lever Assembly	Model 2600-4
16	1878	2	No. 609 Woodruff Key	All models	53	1546	2	Washer (.006)	All models except 2600-8, 2600-12, 2600-13
17	1375	1	No. 61 Woodruff Key	All non-brake models	54	1477	1	Shoulder Bolt	All models except 2600-8, 2600-12, 2600-13
17	1375	2	No. 61 Woodruff Key	Brake Models	55	1606	1	Set Screw (No. 8-32)	All models except 2600-5, 2600-7, 2600-8, 2600-9, 2600-10, 2600-12, 2600-13
18	1101	4	Flange Bearing	All models	56	2845	1	Actuator & Pivot Shaft Assembly	All models
19	1874	1	Special 10 T. Sprocket	All models	57	1968	2	Washer (.031)	Models 2600-2, 2600-5, 2600-7, 2600-8, 2600-9, 2600-10, 2600-11, 2600-12, 2600-13
20	1873	1	Combination Spur Gear (14 T. & 20 T.)	All models	58	1973	1	Retaining Ring	Models 2600-2, 2600-5, 2600-7, 2600-8, 2600-9, 2600-10, 2600-11, 2600-12, 2600-13
21	1525	1	Retaining Ring	All models	59	1984	1	Torsion Spring	Models 2600-2, 2600-5, 2600-7, 2600-8, 2600-9, 2600-10, 2600-11, 2600-12, 2600-13
21	1876	1	Spacer	All models	60	1971	1	Sleeve Bearing	Models 2600-2, 2600-5, 2600-7, 2600-8, 2600-9, 2600-10, 2600-11, 2600-12, 2600-13
22	1877	1	42 T. Bevel Gear	All models	61	1100	1	Retaining Ring	All models
23	1875	1	Spacer	All models	62	1105	1	16 T. Bevel Pinion	All models
24	1880	*	Washer (.020)	All models	63	1926	1	O-Ring	All models
24	1881	*	Washer (.025)	All models	64	1068	*	Washer (.040)	All models
24	1882	*	Washer (.030)	All models	64	1082	*	Washer (.030)	All models
24	1954	*	Washer (.035)	All models	64	1145	*	Washer (.060)	All models
25	1872	1	24 T. Spur Gear	All models	64	1358	*	Washer (.050)	All models
26	1871	1	27 T. Spur Gear	All models	65	1099	1	Retaining Ring	All models
27	1870	1	30 T. Spur Gear	All models	66	2661	1	Pivot Key Assembly	Models 2600-2, 2600-5, 2600-7, 2600-8, 2600-9, 2600-10, 2600-11, 2600-12, 2600-13
28	1300	1	Retaining Ring	All models except 2600-11, 2600-13	66	2666	1	Pivot Kit Assembly	Models 2600-1, 2600-3, 2600-4
29	1129	1	8 T. Sprocket	Models 2600-1, 2600-3, 2600-4, 2600-7, 2600-8, 2600-10, 2600-12	61	1100	1	Retaining Ring	All models
29	1602	1	8 T. Sprocket	Model 2600-9	62	1105	1	16 T. Bevel Pinion	All models
29	1779	1	7 T. Sprocket	Model 2600-5	63	1926	1	O-Ring	All models
29	3052	1	8 T. Sprocket, Splined	Models 2600-2, 2600-11	64	1068	*	Washer (.040)	All models
30	1371	1	No. 4 Woodruff Key	All models except 2600-11	64	1082	*	Washer (.030)	All models
31	1374	1	No. 9 Woodruff Key	All models	64	1145	*	Washer (.060)	All models
32	1883	1	Output Shaft	All models except 2600-2, 2600-11	64	1358	*	Washer (.050)	All models
32	1990	1	Output Shaft	Models 2600-2, 2600-11	65	1099	1	Retaining Ring	All models
33	1090	1	Chain	All models	66	2661	1	Pivot Key Assembly	Models 2600-2, 2600-5, 2600-7, 2600-8, 2600-9, 2600-10, 2600-11, 2600-12, 2600-13
34	1889	1	Special 14 T. Sprocket	All models	66	2666	1	Pivot Kit Assembly	Models 2600-1, 2600-3, 2600-4
35	1888	1	36 T. Spur Gear	All models					

Note: * Use in various combinations to maintain proper clearances.
 ** Order Key No. 45.
 *** Order Key No. 56.