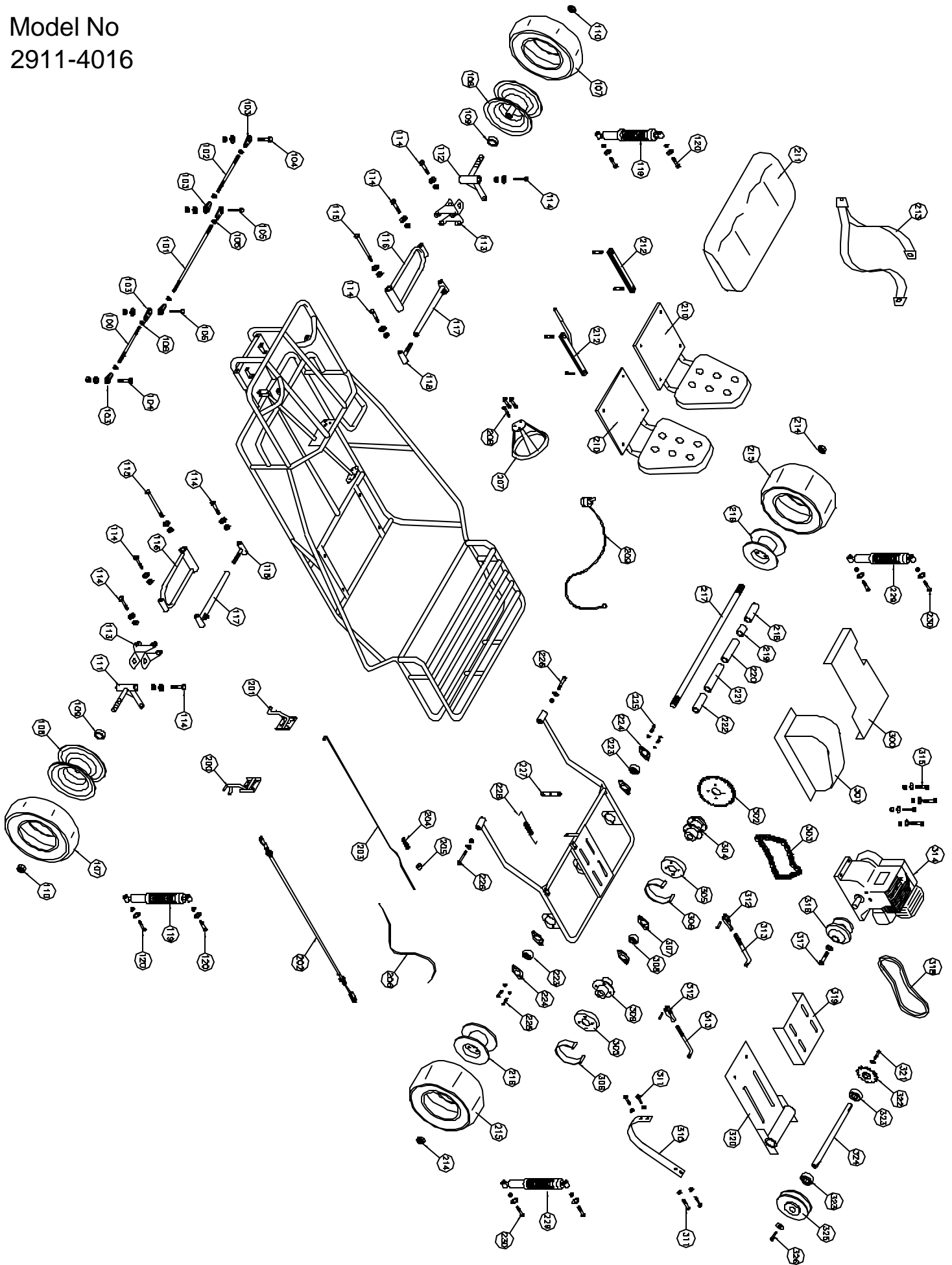


Model No  
2911-4016



## Illustrated Parts List

(2911-4016)

| No                   | Partno  | Description                           | Qty | No                        | Partno   | Description                            | Qty |
|----------------------|---------|---------------------------------------|-----|---------------------------|----------|--|-----|
| <b>Front Section</b> |         |                                       |     | <b>Rear/Drive Section</b> |          |  |     |
| (100)                | 3241001 | Tie Rod 9 1/4"                        | 1   | (224)                     | G339     | Flangette                              | 4   |
| (101)                | G236    | Tie Rod 11 3/8"                       | 1   | (225)                     | 3001114  | Carriage bolt 5/16" x 1" NC            | 4   |
| (102)                | 3241510 | Tie Rod 8 3/4"                        | 1   | (226)                     | F996     | Bolt Assy 1/2" x 4" w/ FW, LN          | 2   |
| (103)                | G257    | Tie Rod Bearing 3/8"                  | 6   | (227)                     | 3521400  | Brake arm                              | 1   |
| (104)                | 3001117 | Hex Bolt 3/8 x 2 1/4" GR8             | 2   | (228)                     | 3571001  | Spring                                 | 1   |
| (105)                | 3001535 | Hex Bolt 3/8" x 2 1/4" GR5            | 2   | (229)                     | 3531000  | Shock Absorber                         | 2   |
| (106)                | F309    | Hex Nut 3/8" NF PL                    | 6   | (230)                     | 3001531  | Allen Head Shoulder Bolt 1/2" x 1 1/4" | 4   |
| (107)                | 3161118 | Tire 16x650x8" Shredder               | 2   | <b>Electrical Section</b> |          |  |     |
| (108)                | 3191107 | Rim                                   | 2   | (400)                     | 3099017* | Wiring Harness                         | 1   |
| (109)                | 3221005 | Bearing                               | 4   | (401)                     | G740*    | Battery                                | 1   |
| (110)                | F328    | Lock Nut 5/8" NC PL                   | 2   | (402)                     | G739*    | Solenoid switch                        | 1   |
| (111)                | 3211516 | Spindle                               | 1   | (403)                     | 3091502* | Solenoid cap                           | 1   |
| (112)                | 3211517 | Spindle                               | 1   | (404)                     | 3090738* | Magneto/Ignition Switch                | 1   |
| (113)                | 3361122 | Spindle Mnt                           | 2   | (405)                     | 3091057* | Battery Box                            | 1   |
| (114)                | F996    | Bolt Assy 1/2" x 4" w/ FW, LN         | 8   | (406)                     | 3091129* | Battery Cable Red (32")                | 1   |
| (115)                | 3009035 | Hex Bolt 1/2" x 7" GR5                | 2   | (407)                     | 3091139* | Battery Cable Red (14")                | 1   |
| (116)                | 3453169 | A-Arm                                 | 2   | (408)                     | 3091140* | Battery Cable Black (14")              | 1   |
| (117)                | 3453176 | I-Arm female                          | 2   |                           |          |  |     |
| (118)                | 3453175 | I-Arm male                            | 2   |                           |          |  |     |
| (119)                | 3532004 | Shock Absorber                        | 2   |                           |          |  |     |
| (120)                | 3001531 | Allen Head Shoulder Bolt 1/2 x 1 1/4" | 4   |                           |          |  |     |
| <b>Frame Section</b> |         |                                       |     |                           |          |  |     |
| (200)                | 3521113 | Brake Pedal                           | 1   |                           |          |  |     |
| (201)                | 3581113 | Gas Pedal                             | 1   |                           |          |  |     |
| (202)                | 3301103 | Brake Cable                           | 1   |                           |          |  |     |
| (203)                | 3261001 | Throttle Rod                          | 1   |                           |          |  |     |
| (204)                | I206    | Compression Spring                    | 1   |                           |          |  |     |
| (205)                | F252    | Nylock Nut 5/16" NF                   | 1   |                           |          |  |     |
| (206)                | G411    | Throttle Cable                        | 1   |                           |          |  |     |
| (207)                | 3361100 | Steering Wheel (Detmar) 12.7"         | 1   |                           |          |  |     |
| (208)                | F811    | Bolt Assy 1/4" x 1 3/4" w/ LW, HN     | 3   |                           |          |  |     |
| (209)                | 3091141 | Kill Switch w/ wire (3015 Model Only) | 1   |                           |          |  |     |
| (210)                | G696    | Molded Seat                           | 2   |                           |          |  |     |
| (211)                | G698    | Molded Seat Bottom DS                 | 1   |                           |          |  |     |
| (212)                | G690    | Seat Adjuster Set                     | 1   |                           |          |  |     |
| (213)                | G695    | Seat Belt (3-point)                   | 2   |                           |          |  |     |
| (214)                | F312    | Cotter Nut 1" NC PL                   | 2   |                           |          |  |     |
| (215)                | 3161116 | Tire 18x950x8" Shog                   | 2   |                           |          |  |     |
| (216)                | 3191108 | Rim                                   | 2   |                           |          |  |     |
| (217)                | 3271009 | Axle 1" x 49 3/4"                     | 1   |                           |          |  |     |
| (218)                | 3281011 | Spacer 6 1/16"                        | 1   |                           |          |  |     |
| (219)                | 3281013 | Spacer 1 1/2"                         | 1   |                           |          |  |     |
| (220)                | 3281014 | Spacer 8 7/8"                         | 1   |                           |          |  |     |
| (221)                | 3281012 | Spacer 10 1/4"                        | 1   |                           |          |  |     |
| (222)                | 3281011 | Spacer 6 1/16"                        | 1   |                           |          |  |     |
| (223)                | G338    | Bearing 1" ID x 2.042"                | 2   |                           |          |  |     |

( \* ) Not shown on illustration