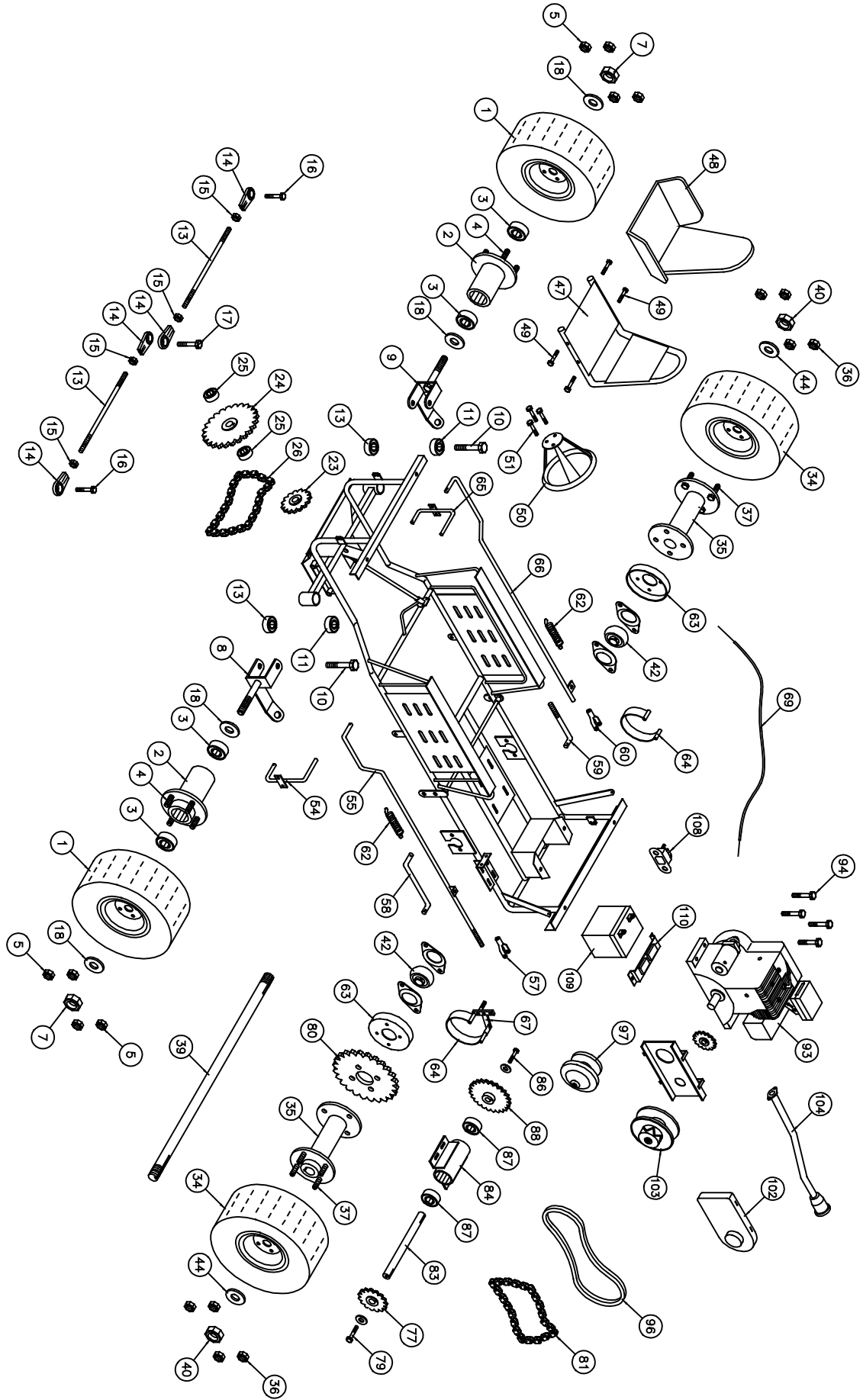


### Model No

1806 Mini-Monster

1826 Grave Digger

1836 King Krunch



## ILLUSTRATED PARTS LIST

1806-4116, 1826-4116, 1836-4316

No.	Part No	Description	Qty	No.	Part No	Description	Qty
<b>Front Wheel Section</b>				<b>Brake &amp; Throttle Section</b>			
(1a)	3161112	Tire (22 x 12 x 8") Mounted Left (BC)	1	(54)	G480	Brake Pedal	1
(1b)	3161113	Tire (22 x 12 x 8") Mounted Right (BC)	1	(55)	G492	Brake rod (w/threaded adjustment)	1
(2)	G271	Casted flange hub 1/2" (steel)	2	(57)	F510	Clevis Pin 5/16"	1
(3)	G903	Bearing (1 5/8" x 3/4")	4	(58)	G483	Brake band rod (left)	1
(4)	F805	Bolt 1/2" x 1 1/2" gr.5 w/ LW	8	(59)	G484	Brake band rod (right) threaded	1
(5)	F326	Lock Nut 1/2"	8	(60)	F511	Clevis Pin 3/8"	1
(6)	F507*	Cotter Pin 5/32" x 2"	2	(61)	F504*	Cotter Pin 1/8" x 1"	12
(7)	F1110	Cotter Nut 3/4"	2	(62)	I205	Spring	2
(8)	G272	Spindle (left)	1	(63)	G428	Brake drum	2
(9)	G273	Spindle (right)	1	(64)	G449	Brake band	2
(10)	F803	Bolt 5/8" x 5" gr.5 w/ LN & FW	2	(65)	G481	Gas Pedal	1
(11)	G270	Bearing for spindle hub-flange 5/8"	4	(66)	G491	Gas control rod	1
(12)	I215*	Grease Fitting 1/4"	2	(67)	3522000	Brake Linkage (Left)	1
(13)	G267	Tie rod 3/8" x 11" (left & right)	2	(68)	3522001*	Brake Linkage (Right)	1
(14)	G257	Tie rod bearing 3/8" (heavy duty)	4	(68)	F951*	Bolt 5/16" x 1" w/ FW, LW & Nut	1
(15)	F309	Nut 3/8" NF	4	(69)	G489	Throttle wire (37") & conduit (31")	1
(16)	F949	Bolt 3/8" x 1 1/4" (w/ FW & LN)	2	(70)	G418*	Conduit clip	1
(17)	F948	Bolt 3/8" x 2" (w/ FW & LN)	1	(71)	F935*	Bolt 3/16" x 3/4" (w/ LW & Nut)	1
(18)	F419	Flat Washer 3/4"	4	(72)	G408*	Lock collar 3/8"	1
<b>Steering Section</b>				<b>Jack Shaft Section</b>			
(21)	F419*	Flat Washer 3/4"	1	(77)	G501	Sprocket 12 Tooth 3/4" bore w/ key	1
(22)	G306*	Bearing 3/4" Flanged (inside frame)	2	(78)	I113*	Key 3/16" x 7/8" (1 on each end)	2
(23)	G501	Sprocket 12 Tooth 3/4" bore w/ key	1	(79)	F967	Bolt 5/16" x 1" (w/ LW & FW)	2
(24)	G559	Sprocket 36T- 41A	1	(80)	G541	Sprocket 54 Tooth	1
(25)	I228	Bearing 1/2" Flanged	2	(81)	G561	Drive Chain #40-78 Pitches	1
(26)	G560	Chain #41-44 Pitch	1	(82)	G514*	Connector Link #40	1
(27)	F804*	Bolt 1/2" x 2 1/2" TAW bolt w/ LN & HN	1	(83)	G564	Jack shaft (3/4" x 9 1/2" w/(2) 1 1/2" keys)	1
(28)	G563*	Lock collar 3/4"	1	(84)	G565	Jack shaft housing (1 5/8" x 7 13/16" )	1
(29)	G694*	Steering Chain Guard	1	(85)	F974*	Bolt 3/8" x 1" w/ FW, & Flange Nut	4
<b>Rear Wheel Section</b>				(86)	F915	Bolt 3/8" x 2 1/2" TAW w/ 3/8" Nut	2
(34a)	3161112	Tire (22 x 12 x 8") Mounted Left	1	(87)	G903	Bearing (1 5/8" OD x 3/4" ID)	2
(34b)	3161113	Tire (22 x 12 x 8") Mounted Right	1	(88)	G558	Sprocket #35-36T w/ 3/4" bore	1
(35)	G352	Casted drive hub (1" bore w/ 1/4" keyway)	2	(89)	G562*	Chain #35-50 Pitches	1
(36)	F326	Lock Nut 1/2"	8	<b>Engine Section</b>			
(37)	F805	Bolt 1/2" x 1 1/2" (w/ LW)	8	(93)	3131504	Tecumseh 6hp Engine	1
(38)	I106*	Key 1/4" x 2 1/4"	2	(94)	F970	Bolt 5/16" x 1 3/4" w/ Flange Nut	4
(39)	G361	Axle 1" x 39 1/2" Long w/ 1/4" x 2 1/2" key	1	(95)	G750*	Torque Converter Complete (TAV unit)	1
(40)	F312	Cotter Nut 1"	2	(96)	G754	Belt TAV	1
(41)	F507*	Cotter Pin 5/32" x 2"	2	(97)	G752	Driver Unit TAV	1
(42)	G338	Flange Bearing 1"	2	(98)	F1116*	Bolt 5/16" x 2" NF w/F&L washer	1
(43)	F906*	Bolt 5/16" x 1" (w/ LW & LN)	4	(100)	F905*	Bolt 5/16" x 3/4" NF w/ LW	2
(44)	G724*	Spacer 1/4" ID x 1" OD	1	(101)	F250*	Socket Cap Screw #24 (5/16" x 5/8")	2
(45)	G339*	Flangette	4	(102)	G751	Shroud Belt Guard (Plastic) Snap on	1
(46)	G783*	Axle Guard	1	(103)	G753	Driven Unit (includes sprocket)	1
<b>Frame &amp; Seat Section</b>				(104)	3567500	Muffler	1
(47)	G664-01	Metal Seat #7 (Black)	1	<b>Electrical Section</b>			
(48)	G661	Cushion seat #10 (Black)	1	(105)	G107*	Truck Light Kit	1
(49)	F970	Bolt 5/16" x 1 3/4" w/F&L washer & H.nut	4	(106)	G959*	Buss HKP Fuse Holder	1
(50)	G672	Steering Wheel (12")	1	(107)	G738*	Magneto Switch	1
(51)	F924	Bolt 1/4" x 3/4" w/ LW & Nut	3	(108)	G739	Solenoid Switch	1
(52)	I229*	Cable Tie	3	(109)	G740	GT200L Battery	1
(53)	G673*	Choke Cable	1	(110)	3091501	Battery Terminal Insulator	1

\* Not Shown on Drawing