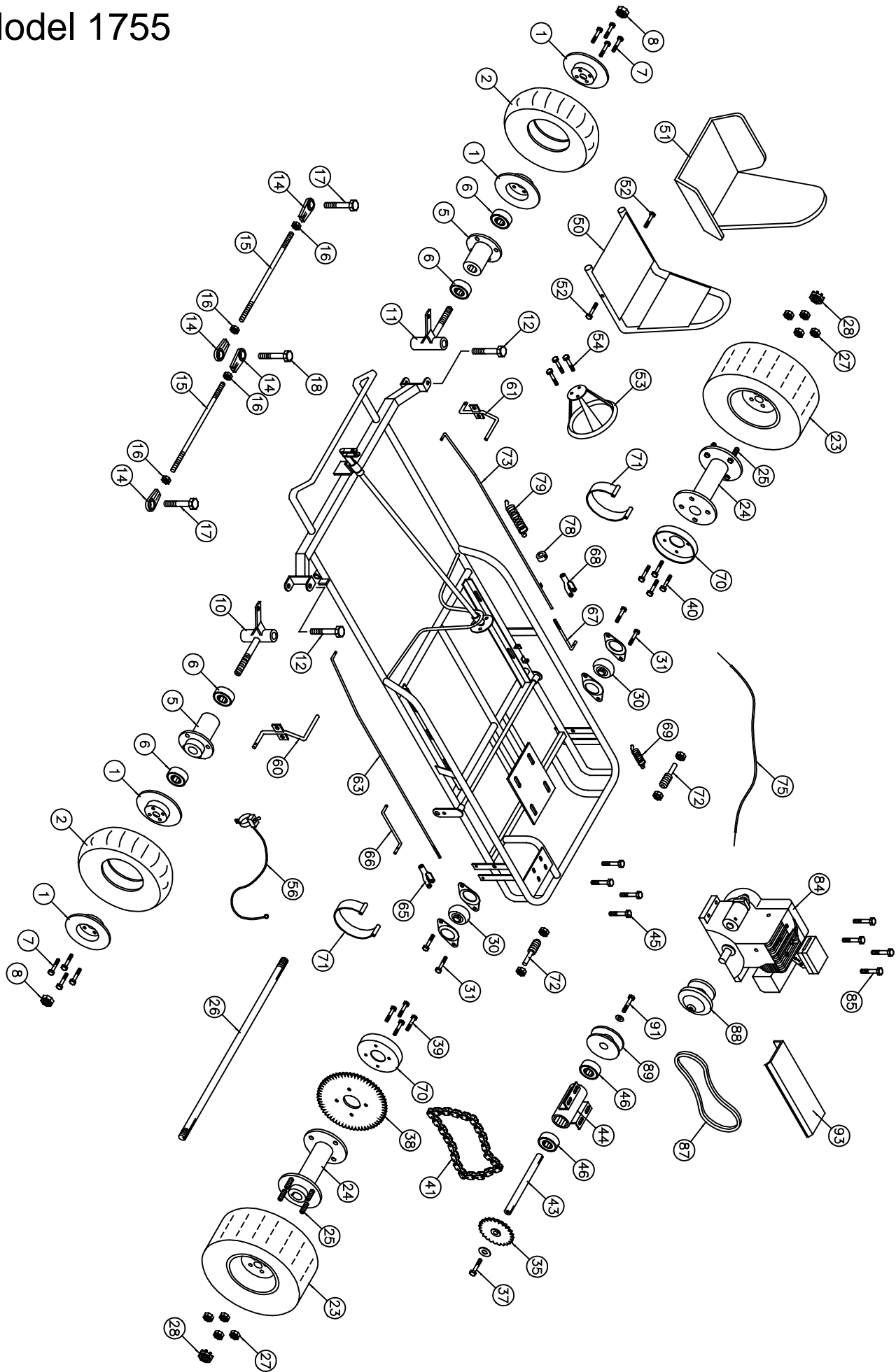


Model 1755



Super Wheels®

By Carter

Go-Kart Parts List - Model 1755

DISCONTINUED

No.	Partno	Description	Qty	No.	Partno	Description	Qty
Front Wheel Section				(45)	F-951	Bolt 5/16" x 1" w/(2) F.W., L.W., & H. Nut	4
(1)	G-251	Split rim wheel 6" (Set)	2	(46)	G-903	Bearing (1 5/8" OD x 3/4" ID)	2
(2)	G-276	Tire & tube assembly (14.5 x 7.00 x 6")	2	Frame Section			
(3)	G-277	Tire (14.5 x 7.00 x 6") (N.S.)	2	(50)	G-629-01	Metal Seat #4	1
(4)	G-278	Tube (14.5 x 7.00 x 6") (N.S.)	2	(51)	G-656	Cushion Seat #4 (Hot Bodies)	1
(5)	G-264	Steel Flange hub (1 3/8" bore)	2	(52)	F-958	Bolt 5/16" x 1 1/2" w/F.W., L.W. & H.Nut	2
(6)	G-204	Bearing (1 3/8" OD x 5/8" ID)	4	(53)	G-647	Steering Wheel 10" (Deep dish)	1
(7)	F-908	Bolt 3/8" x 1 1/4" w/ L.W. & H. Nut	8	(54)	F-924	Bolt 1/4" x 3/4" w/L.W. & H.Nut	3
(8)	F-327	Slotted Hex Nut 5/8"	2	(55)	I-229	Cable Tie (N.S.)	1
(9)	F-501	Cotter Pin 1/8" x 1 1/4" (N.S.)	2	(56)	G-642	Toggle Kill Switch w/ wire (48")	1
(10)	G-253	Spindle Left	1	Throttle & Brake Section			
(11)	G-254	Spindle Right	1	(60)	G-435	Brake Pedal	1
(12)	G-259	Bushings, Bronze 1/2" (N.S.)	4	(61)	G-436	Gas Pedal	1
(13)	F-996	King Pin Bolt (1/2" x 3 3/4" w/ F.W. & L.Nut)	2	(62)	F-504	Cotter pin 1/8" x 1" (N.S.)	6
(14)	I-215	Grease Fitting 1/4" (Spindles) (N.S.)	2	(63)	G-486	Brake rod #16B	1
(15)	G-257	Tie rod end bearing 3/8" - Heavy Duty	4	(65)	F-510	Clevis pin 5/16" (w/ yoke)	1
(16)	G-236	Tie rod (3/8" x 11 3/8")	2	(66)	G-461	Brake band rod (left)	1
(17)	F-309	Hex nut 3/8" NF	4	(67)	G-462	Brake band rod (right)	1
(18)	F-949	Bolt 3/8" x 1 1/4" (w/F.W. & L.Nut)	2	(68)	F-511	Clevis pin 3/8" (w/ yoke)	1
(19)	F-948	Bolt 3/8" x 2" w/(3) F.W. & (1) L.Nut	1	(69)	G-476	Spring (short)	1
Rear Wheel Section				(70)	G-428	Brake Drum	2
(23)	G-331	Tire (18 x 9.50 x 8") Mounted	2	(71)	G-449	Brake Band	2
(24)	G-352	Drive Hub Cast (1" bore w/ 1/4" keyway)	2	(72)	F-994	Bolt 5/8" x 3" Stud w/ (2) Nut & (1) L.W.	2
(25)	F-805	Bolt 1/2" x 1 1/2" (T.A.W.) w/ Lock washer	8	(73)	G-487	Throttle Rod #17T	1
(26)	G-363	Axle 1" OD x 45" (2 - keyways)	1	(74)	F-904	Bolt 5/16" x 3/4" w/ F.W.,L.W. & H.Nut (N.S.)	1
(27)	F-326	Lock Nut 1/2"	8	(75)	G-489	Throttle wire & conduit (37" Wire)	1
(28)	F-312	Slotted Hex nut 1"	2	(76)	G-418	Conduit Clip (N.S.)	1
(29)	F-507	Cotter pin (5/32" x 2") (N.S.)	2	(77)	F-935	Bolt 3/16" x 3/4" w/L.W. & H.Nut (N.S.)	1
(30)	G-338	Flange bearing (1" I.D.) & Flangettes	2	(78)	G-408	Lock Collar 3/8"	1
(31)	F-906	Bolt 5/16" x 1" w/L.W. & nut	4	(79)	I-205	Spring	1
(32)	I-110	Key, Axle 1/4" x 2 1/4" (N.S.)	2	Engine Section			
Jack Shaft Section				(84)	E-104	Briggs & Stratton 5 HP Engine (136212)	1
(35)	G-501	Sprocket 12T-40B (3/4" bore)	1	(85)	F-970	Bolt 5/16" x 1 3/4" w/ F.W. & L.W. & H.Nut	4
(36)	I-113	Key 3/16" x 7/8" (N.S.)	1	(86)	G-756	Series 20 Torque Converter Comp. (N.S.)	1
(37)	F-967	Bolt 5/16" x 1" w/F.W. & L.W.	1	(87)	G-759	Series 20 Belt	1
(38)	G-541	Sprocket 54T-41A	1	(88)	G-757	Series 20 Driver unit	1
(39)	F-954	Bolt 3/8" x 1 1/4" w/ L.W.	4	(89)	G-758	Series 20 Driven unit	1
(40)	F-947	Bolt 3/8" x 1" w/ Lock washer	4	(90)	F-961	Bolt 5/16" x 1 1/4" NF w/ FW. & L.W. (N.S.)	1
(41)	G-567	Drive chain #40-62 Pitches	1	(91)	F-967	Bolt 5/16" x 1" w/ L.W. & F.W.	1
(42)	G-514	Connector link #40 (N.S.)	1	(92)	I-114	Key 3/16" x 2" (N.S.)	1
(43)	G-548	Jack Shaft (3/4" x 11 11/16")	1	(93)	G-737	Belt Guard	1
(44)	G-549	Jack Shaft Housing (5 1/8" x 8 1/2") (bolts underneath the Jack Shaft plate)	1	(94)	F-992	Nut 1/4" w/ Lock washer (N.S.)	2

(N.S.) - Not Shown on Drawing

Carter Brothers Mfg. Co., Inc. Route 1, Box 42 Brundidge, AL 36010-9148

Tele: (334) 735-2301 Fax: (334) 735-3500