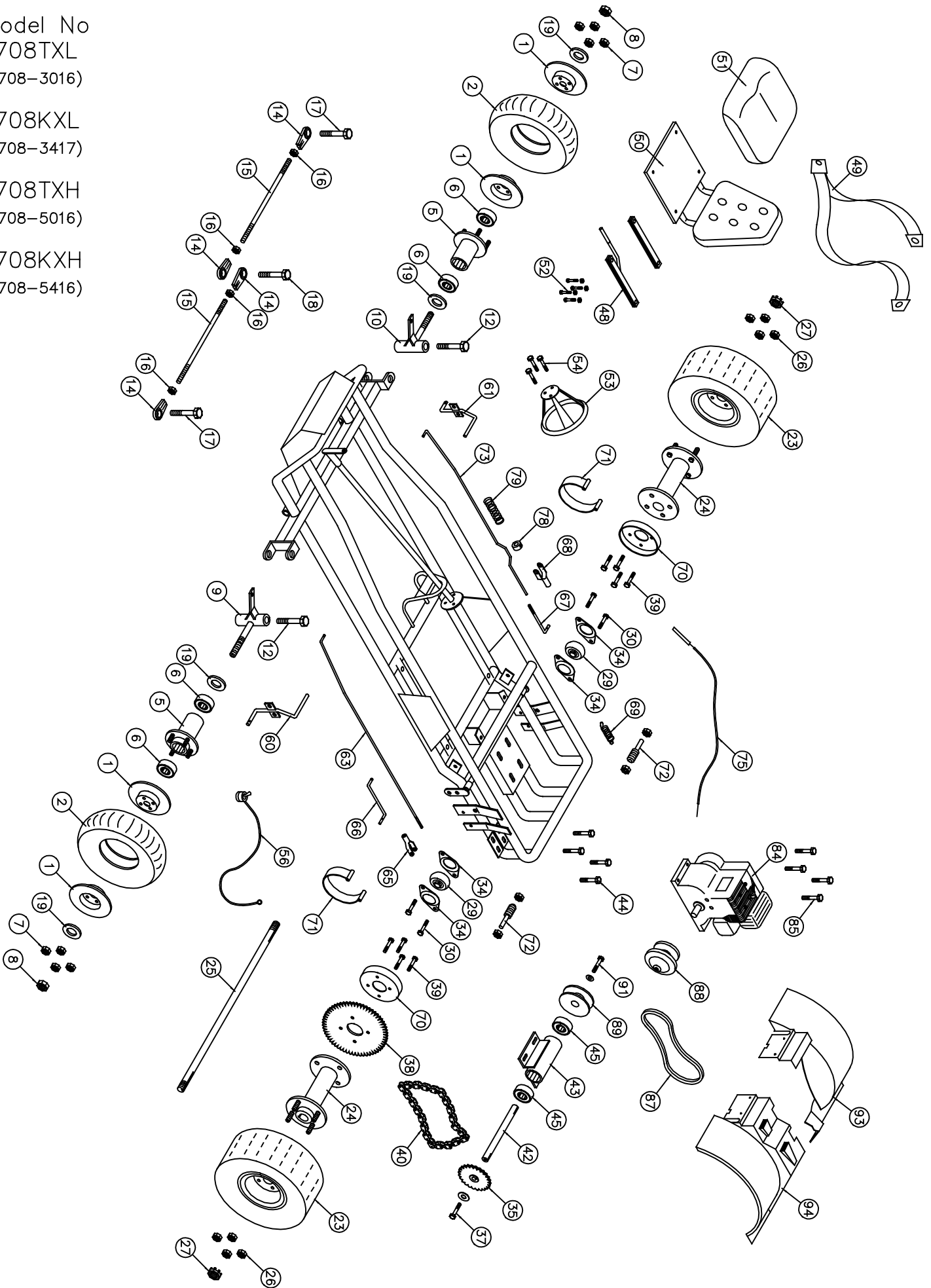


Model No  
1708TXL  
(1708-3016)

1708KXL  
(1708-3417)

1708TXH  
(1708-5016)

1708KXH  
(1708-5416)



**Go-Kart Item No**  
**1708TXL, 1708-KXL, 1708-TXH, 1708-KXH**

No.	Partno	Description	Qty	No.	Partno	Description	Qty
<b><u>Front Wheel Section</u></b>				(48)	G690	Seat Adjuster Set	1
(1)	G293	Rim wheel 8"	2	(49)	G695	Seat Belt 3-Point	1
(2)	3161115	Tire (16 x 650 x 8") SHog	2	(50)	G696	Seat w/ Molded Back	1
(5)	G264	Steel Flange hub 1 3/8" bore	2	(51)	G697	Molded Seat Bottom S/S	1
(6)	G204	Bearing (1 3/8" OD x 5/8" ID)	4	(52)	F810	Carriage Bolt 5/16" x 3/4" NC w/LN	4
(8)	F327	Cotter Nut 5/8"	2	(53)	G647	Steering Wheel 10" (Deep dish)	1
(9)	G287	Spindle (left)	1	(54)	F924	Bolt 1/4" x 3/4" w/L.W. & H.Nut	3
(10)	G288	Spindle (right)	1	(55)	I229*	Cable Tie	3
(11)	G259*	Bushings, Bronze 1/2"	4	(56)	G774	Toggle Kill Switch w/ wire 48" (1708)	1
(12)	F996	King Pin Bolt (1/2" x 3 3/4" w/(2)F.W. & L.Nut)	2	(57)	G155*	Flag	1
(13)	I215*	Grease Fitting 1/4" (Spindles)	2	(58)	G121*	Flag holder	1
(14)	G257	Tie rod end bearing 3/8" - Heavy Duty	4	<b><u>Throttle &amp; Brake Section</u></b>			
(15)	G236	Tie rod 3/8" x 11 3/8"	2	(60)	G450	Brake Pedal	1
(16)	F309	Hex nut 3/8" NF	4	(61)	G455	Gas Pedal	1
(17)	F949	Bolt 3/8" x 1 1/4" (w/F.W. & L.Nut)	2	(62)	F504*	Cotter pin 1/8" x 1"	8
(18)	F948	Bolt 3/8" x 2" w/(3) F.W. & (1) L.Nut	1	(63)	G460	Brake rod #14B	1
(19)	F430	Flat Washer 5/8"	4	(65)	F510	Clevis pin 5/16"	1
(20)	F501*	Cotter Pin 1/8" x 1 1/4"	4	(66)	G412	Brake band rod (left)	1
<b><u>Rear Wheel Section</u></b>				(67)	G413	Brake band rod (right)	1
(22)	G782*	Axle Guard	1	(68)	F511	Clevis pin 3/8"	1
(23a)	3161112	Tire (22 x 12 x 8") Mounted Left	1	(69)	G476	Spring	1
(23b)	3161113	Tire (22 x 12 x 8") Mounted Right	1	(70)	G428	Brake Drum	2
(24)	G352	Drive Hub Cast 1" bore w/ 1/4" keyway	2	(71)	G449	Brake Band	2
(25)	G355	Axle 1" OD x 37" (2 - keyways)	1	(72)	F994	Bolt 5/8" x 3" Stud w/ (2) Nut & (1) L.W.	2
(26)	F326	Lock Nut 1/2"	8	(73)	G456	Throttle Rod #15TZ	1
(27)	F312	Slotted Hex nut 1"	2	(74)	F951*	Bolt 5/16" x 1" w/(1)F.W.,(1)L.W.& H.Nut	1
(28)	F507*	Cotter pin (5/32" x 2")	2	(75)	G411	Throttle wire & conduit (40" Wire)	1
(29)	G338	Flange bearing (1" I.D.)	3	(76)	G418*	Conduit Clip	1
(30)	F906	Bolt 5/16" x 1" w/L.W. & Hnut	4	(77)	F935*	Bolt 3/16" x 3/4" w/L.W. & H.Nut	1
(31)	I106*	Key, Axle 1/4" x 3 1/2"	2	(78)	F252	Nyloc Nut	1
(32)	F805*	Bolt 1/2" x 1 1/2" w/ L.W.	8	(79)	I206	Spring	1
(33)	G724*	Spacer 1/4" ID x 1" OD	2	<b><u>Engine Section</u></b>			
(34)	G339	Bearing Flagettes	6	(84a)	3131503	Tecumseh 8HP Engine w/ Alt (TXL & KXL)	1
<b><u>Jack Shaft Section</u></b>				(84b)	E136*	Honda 8HP Engine (TXH & KXH)	1
(35)	G583	Sprocket 11T (3/4" bore)	1	(85)	F970	Bolt 5/16" x 1 3/4" w/ Flange Nut	4
(36)	I113*	Key 3/16" x 7/8"	1	(86)	G720*	Series 40 Torque Converter Comp.	1
(37)	F967	Bolt 5/16" x 1" w/F.W. & L.W.	2	(87)	G721	Series 40 Belt	1
(38)	G584	Sprocket 72T(41A)	1	(88)	G722	Series 40 Driver unit	1
(39)	F954	Bolt 3/8" x 1 1/4" w/Lwasher	8	(89)	G723	Series 40 Driven unit	1
(40)	G585	Drive chain #40-86 Pitches	1	(91)	F979	Bolt 7/16" x 2 1/4" NF w/ L.W. & Pilot Washer	1
(41)	G514*	Connector link #40	1	(93a)	3371125	Drive Cover (Right) (Tecumseh ONLY)	1
(42)	G544	Jack Shaft (3/4" x 9 1/2")	1	(93b)	3371129	Drive Cover (Right) (Honda ONLY)	1
(43)	G545	Jack Shaft Housing (1 5/8" x 5 1/4")	1	(94a)	3371126	Drive Cover (Left) (Tecumseh ONLY)	1
(44)	F807	Bolt 3/8" x 1" w/(2) F.W. & (1) L.Nuts	4	(94b)	3371130	Drive Cover (Left) Honda ONLY)	1
(45)	G903	Bearing (1 5/8" OD x 3/4" ID)	2	(95)	3371131*	Bumper Guard	1
<b><u>Frame Section</u></b>				(100)	G107*	Light Kit (TXL & KXL Models Only)	1

\* Not Shown on Drawing