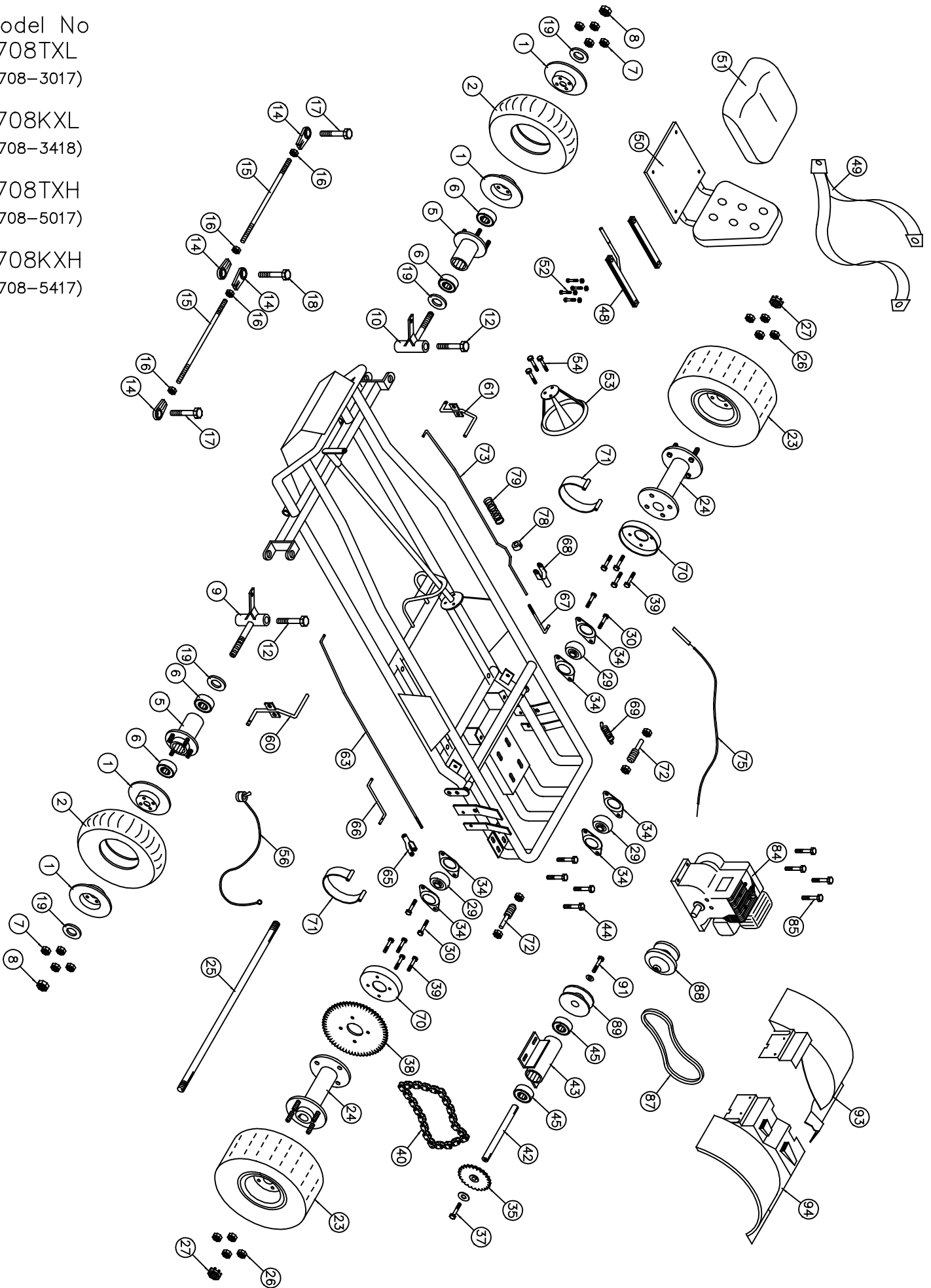


Model No
1708TXL
(1708-3017)

1708KXL
(1708-3418)

1708TXH
(1708-5017)

1708KXH
(1708-5417)



Go-Kart Item No
1708TXL, 1708-KXL, 1708-TXH, 1708-KXH

| No. | Partno | Description | Qty | No. | Partno | Description | Qty |
|-----------------------------------|---------|---|-----|--|----------|---|-----|
| <u>Front Wheel Section</u> | | | | (48) | G690 | Seat Adjuster Set | 1 |
| (1) | G293 | Rim wheel 8" | 2 | (49) | G695 | Seat Belt 3-Point | 1 |
| (2) | 3161115 | Tire (16 x 650 x 8") SHog | 2 | (50) | G696 | Seat w/ Molded Back | 1 |
| (5) | G264 | Steel Flange hub 1 3/8" bore | 2 | (51) | G697 | Molded Seat Bottom S/S | 1 |
| (6) | G204 | Bearing (1 3/8" OD x 5/8" ID) | 4 | (52) | F810 | Carriage Bolt 5/16" x 3/4" NC w/LN | 4 |
| (8) | F327 | Cotter Nut 5/8" | 2 | (53) | G647 | Steering Wheel 10" (Deep dish) | 1 |
| (9) | G287 | Spindle (left) | 1 | (54) | F924 | Bolt 1/4" x 3/4" w/L.W. & H.Nut | 3 |
| (10) | G288 | Spindle (right) | 1 | (55) | I229* | Cable Tie | 3 |
| (11) | G259* | Bushings, Bronze 1/2" | 4 | (56) | G774 | Toggle Kill Switch w/ wire 48" (1708) | 1 |
| (12) | F996 | King Pin Bolt (1/2" x 3 3/4" w/(2)F.W. & L.Nut) | 2 | (57) | G155* | Flag | 1 |
| (13) | I215* | Grease Fitting 1/4" (Spindles) | 2 | (58) | G121* | Flag holder | 1 |
| (14) | G257 | Tie rod end bearing 3/8" - Heavy Duty | 4 | <u>Throttle & Brake Section</u> | | | |
| (15) | G236 | Tie rod 3/8" x 11 3/8" | 2 | (60) | G450 | Brake Pedal | 1 |
| (16) | F309 | Hex nut 3/8" NF | 4 | (61) | G455 | Gas Pedal | 1 |
| (17) | F949 | Bolt 3/8" x 1 1/4" (w/F.W. & L.Nut) | 2 | (62) | F504* | Cotter pin 1/8" x 1" | 8 |
| (18) | F948 | Bolt 3/8" x 2" w/(3) F.W. & (1) L.Nut | 1 | (63) | G460 | Brake rod #14B | 1 |
| (19) | F430 | Flat Washer 5/8" | 4 | (65) | F510 | Clevis pin 5/16" | 1 |
| (20) | F501* | Cotter Pin 1/8" x 1 1/4" | 4 | (66) | G412 | Brake band rod (left) | 1 |
| <u>Rear Wheel Section</u> | | | | (67) | G413 | Brake band rod (right) | 1 |
| (22) | G782* | Axle Guard | 1 | (68) | F511 | Clevis pin 3/8" | 1 |
| (23a) | 3161112 | Tire (22 x 12 x 8") Mounted Left | 1 | (69) | G476 | Spring | 1 |
| (23b) | 3161113 | Tire (22 x 12 x 8") Mounted Right | 1 | (70) | G428 | Brake Drum | 2 |
| (24) | G352 | Drive Hub Cast 1" bore w/ 1/4" keyway | 2 | (71) | G449 | Brake Band | 2 |
| (25) | G355 | Axle 1" OD x 37" (2 - keyways) | 1 | (72) | F994 | Bolt 5/8" x 3" Stud w/ (2) Nut & (1) L.W. | 2 |
| (26) | F326 | Lock Nut 1/2" | 8 | (73) | G456 | Throttle Rod #15TZ | 1 |
| (27) | F312 | Slotted Hex nut 1" | 2 | (74) | F951* | Bolt 5/16" x 1" w/(1)F.W.,(1)L.W.& H.Nut | 1 |
| (28) | F507* | Cotter pin (5/32" x 2") | 2 | (75) | G411 | Throttle wire & conduit (40" Wire) | 1 |
| (29) | G338 | Flange bearing (1" I.D.) | 3 | (76) | G418* | Conduit Clip | 1 |
| (30) | F906 | Bolt 5/16" x 1" w/L.W. & Hnut | 4 | (77) | F935* | Bolt 3/16" x 3/4" w/L.W. & H.Nut | 1 |
| (31) | I106* | Key, Axle 1/4" x 3 1/2" | 2 | (78) | F252 | Nyloc Nut | 1 |
| (32) | F805* | Bolt 1/2" x 1 1/2" w/ L.W. | 8 | (79) | I206 | Spring | 1 |
| (33) | G724* | Spacer 1/4" ID x 1" OD | 2 | <u>Engine Section</u> | | | |
| (34) | G339 | Bearing Flagettes | 6 | (84a) | 3131503 | Tecumseh 8HP Engine w/ Alt (TXL & KXL) | 1 |
| <u>Jack Shaft Section</u> | | | | (84b) | E136* | Honda 8HP Engine (TXH & KXH) | 1 |
| (35) | G583 | Sprocket 11T (3/4" bore) | 1 | (85) | F970 | Bolt 5/16" x 1 3/4" w/ Flange Nut | 4 |
| (36) | I113* | Key 3/16" x 7/8" | 1 | (86) | G720* | Series 40 Torque Converter Comp. | 1 |
| (37) | F967 | Bolt 5/16" x 1" w/F.W. & L.W. | 2 | (87) | G721 | Series 40 Belt | 1 |
| (38) | G584 | Sprocket 72T(41A) | 1 | (88) | G722 | Series 40 Driver unit | 1 |
| (39) | F954 | Bolt 3/8" x 1 1/4" w/Lwasher | 8 | (89) | G723 | Series 40 Driven unit | 1 |
| (40) | G585 | Drive chain #40-86 Pitches | 1 | (91) | F979 | Bolt 7/16" x 2 1/4" NF w/ L.W. & Pilot Washer | 1 |
| (41) | G514* | Connector link #40 | 1 | (93a) | 3371125 | Drive Cover (Right) (Tecumseh ONLY) | 1 |
| (42) | G544 | Jack Shaft (3/4" x 9 1/2") | 1 | (93b) | 3371129 | Drive Cover (Right) (Honda ONLY) | 1 |
| (43) | G545 | Jack Shaft Housing (1 5/8" x 5 1/4") | 1 | (94a) | 3371126 | Drive Cover (Left) (Tecumseh ONLY) | 1 |
| (44) | F807 | Bolt 3/8" x 1" w/(2) F.W. & (1) L.Nuts | 4 | (94b) | 3371130 | Drive Cover (Left) Honda ONLY) | 1 |
| (45) | G903 | Bearing (1 5/8" OD x 3/4" ID) | 2 | (95) | 3371131* | Bumper Guard | 1 |
| <u>Frame Section</u> | | | | (100) | G107* | Light Kit (TXL & KXL Models Only) | 1 |

* Not Shown on Drawing