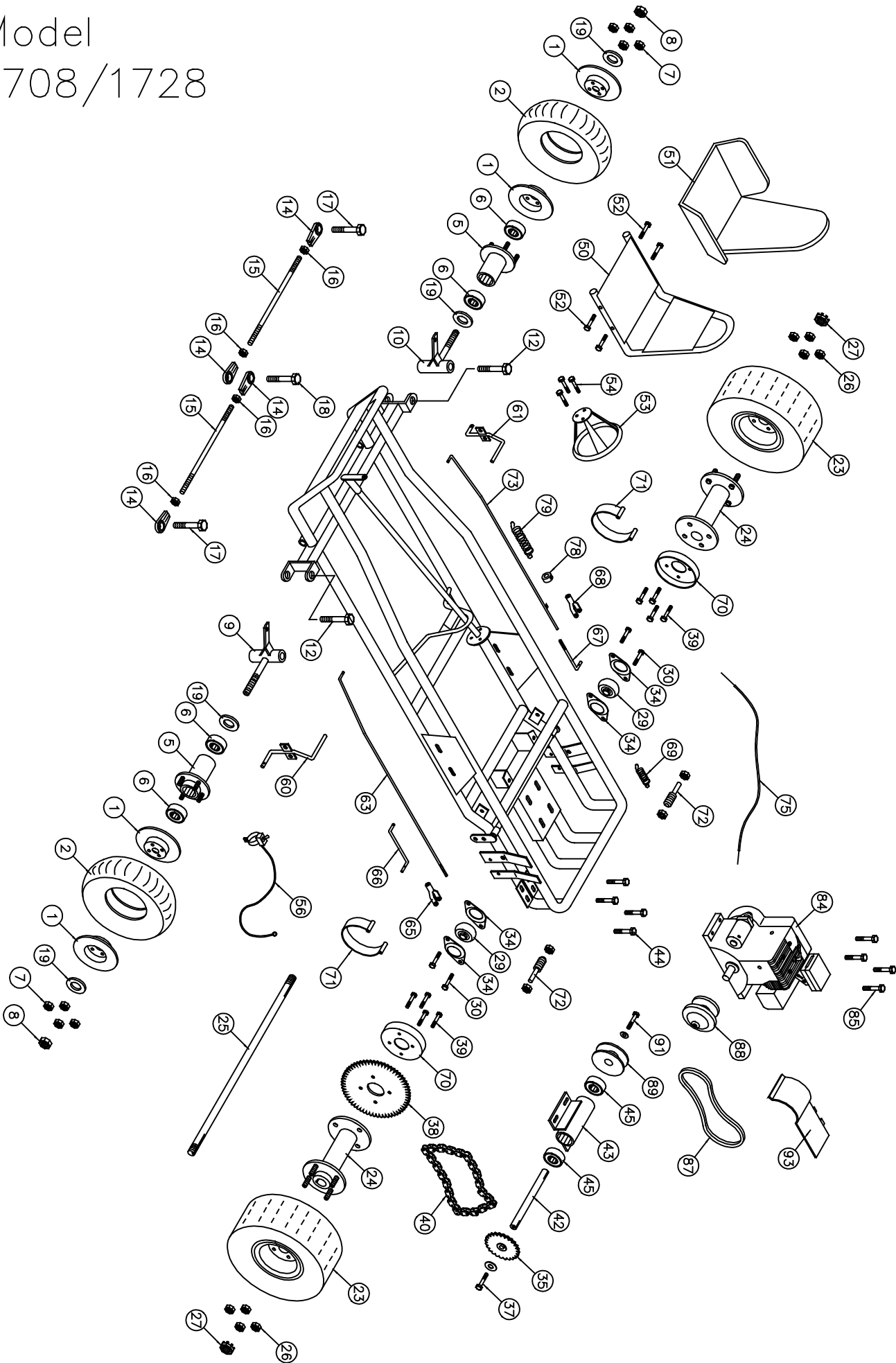


Model
1708/1728



Super Wheels®

Go-Kart Parts List - Model 1708/1728

No.	Partno	Description	Qty	No.	Partno	Description	Qty
<u>Front Wheel Section</u>				(49)	G689*	Seat Belt	1
(1)	G251	Split rim wheel 6" (Set)	2	(50)	G674	Metal Seat #6	1
(2)	G248	Tire & tube assembly (15.0 x 6.00 x 6")	2	(51)	G661	Cushion Seat #10	1
(3)	G249*	Tire (15.0 x 6.00 x 6")	2	(52)	F970	Bolt 5/16" x 1 3/4" w/F.W., L.W. & H.Nut	4
(4)	G250*	Tube (15.0 x 6.00 x 6")	2	(53)	G647	Steering Wheel 10" (Deep dish)	1
(5)	G264	Steel Flange hub 1 3/8" bore	2	(54)	F924	Bolt 1/4" x 3/4" w/L.W. & H.Nut	3
(6)	G204	Bearing (1 3/8" OD x 5/8" ID)	4	(55)	I229*	Cable Tie	3
(8)	F327	Cotter Nut 5/8"	2	(56)	G774	Toggle Kill Switch w/ wire 48" (1708)	1
(9)	G253	Spindle (left)	1	(57)	G102*	Flag	1
(10)	G254	Spindle (right)	1	(58)	G121*	Flag holder	1
(11)	G259*	Bushings, Bronze 1/2"	4	<u>Throttle & Brake Section</u>			
(12)	F996	King Pin Bolt (1/2" x 3 3/4" w/(2)F.W. & L.Nut)	2	(60)	G450	Brake Pedal	1
(13)	I215*	Grease Fitting 1/4" (Spindles)	2	(61)	G455	Gas Pedal	1
(14)	G257	Tie rod end bearing 3/8" - Heavy Duty	4	(62)	F504*	Cotter pin 1/8" x 1"	8
(15)	G267	Tie rod 3/8" x 11 1/8"	2	(63)	G460	Brake rod #14B	1
(16)	F309	Hex nut 3/8" NF	4	(65)	F510	Clevis pin 5/16"	1
(17)	F949	Bolt 3/8" x 1 1/4" (w/F.W. & L.Nut)	2	(66)	G412	Brake band rod (left)	1
(18)	F948	Bolt 3/8" x 2" w/(3) F.W. & (1) L.Nut	1	(67)	G413	Brake band rod (right)	1
(19)	F430	Flat Washer 5/8"	4	(68)	F511	Clevis pin 3/8"	1
(20)	F501*	Cotter Pin 1/8" x 1 1/4"	4	(69)	G476	Spring	1
<u>Rear Wheel Section</u>				(70)	G428	Brake Drum	2
(22)	G782*	Axle Guard	1	(71)	G449	Brake Band	2
(23)	G334	Tire (22 x 11 x 8") Mounted	2	(72)	F994	Bolt 5/8" x 3" Stud w/ (2) Nut & (1) L.W.	2
(24)	G352	Drive Hub Cast 1" bore w/ 1/4" keyway	2	(73)	G456	Throttle Rod #15TZ	1
(25)	G355	Axle 1" OD x 37" (2 - keyways)	1	(74)	F951*	Bolt 5/16" x 1" w/(1)F.W.,(1)L.W.& H.Nut	1
(26)	F326	Lock Nut 1/2"	8	(75)	G411	Throttle wire & conduit (40" Wire)	1
(27)	F312	Slotted Hex nut 1"	2	(76)	G418*	Conduit Clip	1
(28)	F507*	Cotter pin (5/32" x 2")	2	(77)	F935*	Bolt 3/16" x 3/4" w/L.W. & H.Nut	1
(29)	G338	Flange bearing (1" I.D.)	2	(78)	F252	Nyloc Nut	1
(30)	F906	Bolt 5/16" x 1" w/L.W. & Hnut	4	(79)	I206	Spring	1
(31)	I106*	Key, Axle 1/4" x 3 1/2"	2	<u>Engine Section</u>			
(32)	F805*	Bolt 1/2" x 1 1/2" w/ L.W.	8	(84A)	3131501	Tecumseh 8HP Engine (1708)	1
(33)	G724*	Spacer 1/4" ID x 1" OD	2	(84B)	3131502	Tecumseh 8HP ES Engine (1728)	1
(34)	G339	Bearing Flagettes	4	(85)	F970	Bolt 5/16" x 1 3/4" w/ Flange Nut	4
<u>Jack Shaft Section</u>				(86)	G720*	Series 40 Torque Converter Comp.	1
(35)	G583	Sprocket 11T(40B) (3/4" bore)	1	(87)	G721	Series 40 Belt	1
(36)	I113*	Key 3/16" x 7/8"	1	(88)	G722	Series 40 Driver unit	1
(37)	F967	Bolt 5/16" x 1" w/F.W. & L.W.	2	(89)	G723	Series 40 Driven unit	1
(38)	G584	Sprocket 72T(41A)	1	(90)	F800*	Bolt 5/16" x 1 3/4" w/ L.W. & H.N.	2
(39)	F954	Bolt 3/8" x 1 1/4" w/Lwasher	8	(91)	F979	Bolt 7/16" x 2 1/4" NF w/ L.W. & Pilot Washer	1
(40)	G585	Drive chain #40-86 Pitches	1	(92)	I115*	Key 3/16" x 3"	1
(41)	G514*	Connector link #40	1	(93A)	G785	Belt Guard (Tecumseh)	1
(42)	G544	Jack Shaft (3/4" x 9 1/2")	1	(93B)	G786	Belt Guard (Honda)	1
(43)	G545	Jack Shaft Housing (1 5/8" x 5 1/4")	1	(100)	G107*	Light Kit (ES Only)	1
(44)	F807	Bolt 3/8" x 1" w/(2) F.W. & (1) L.Nuts	4	(101)	G959*	Buss HKP Fuse Holder (ES Only)	1
(45)	G903	Bearing (1 5/8" OD x 3/4" ID)	2	(102)	G738*	Magneto Switch (ES Only)	1
<u>Frame Section</u>				(103)	G739*	Solenoid Switch (ES Only)	1
(48)	G690*	Seat Adjuster	1	(104)	G740*	Battery GT200L (ES Only)	1

* Not Shown on Drawing ES – Electric Start